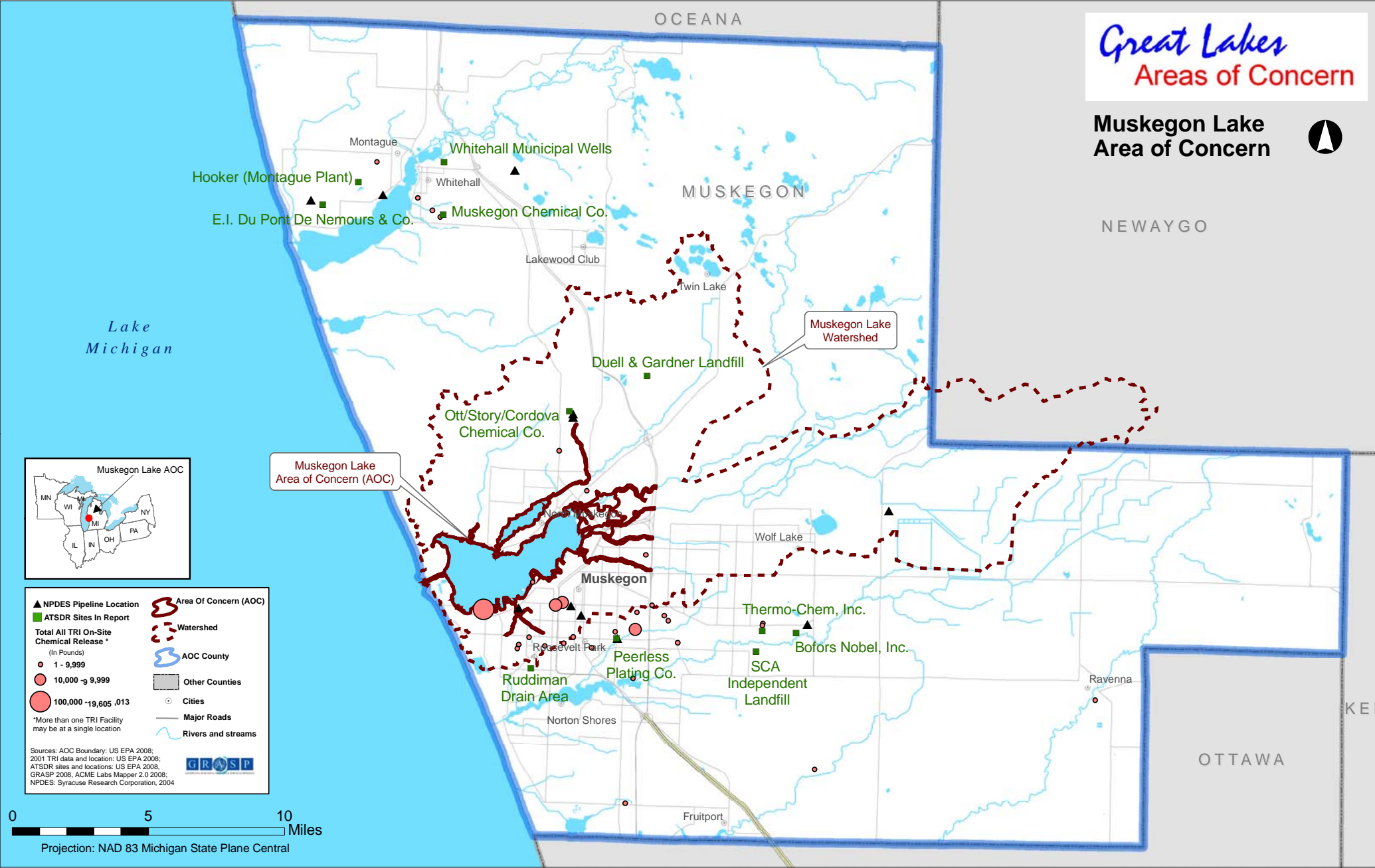


Great Lakes Areas of Concern

Muskegon Lake Area of Concern



- ▲ NPDES Pipeline Location
- ATSDR Sites In Report
- Total All TRI On-Site Chemical Release * (In Pounds)
- 1 - 9,999
- 10,000 - 9,999
- 100,000 - 19,605,013
- *More than one TRI Facility may be at a single location
- Area Of Concern (AOC)
- Watershed
- AOC County
- Other Counties
- Cities
- Major Roads
- Rivers and streams

Sources: AOC Boundary: US EPA 2008;
 2001 TRI data and location: US EPA 2008;
 ATSDR sites and locations: US EPA 2008;
 GRASP 2008, ACME Labs Mapper 2.0 2008;
 NPDES: Syracuse Research Corporation, 2004

