

PRSRT STD  
U.S. Postage  
PAID  
ROCHESTER, NY  
PERMIT NO. 1434



Map of the Dutch Republic, adapted from the map by Johannes Janssonius, 1658. Courtesy of the Universiteits Bibliotheek Amsterdam, Map Department, Collection Royal Dutch Geographic Society

National Gallery of Art  
Sixth Street and Constitution Avenue NW  
Washington, DC

Mailing address  
Department of Teacher, School,  
and Family Programs  
and Division of Education  
National Gallery of Art  
2000B South Club Drive  
Landover, MD 20785

[www.nga.gov/kids](http://www.nga.gov/kids)



# family weekend

National Gallery of Art | April 25–26, 2009



# weekend in the dutch republic



Pieter de Hooch, *Courtyard Scene in Delft* (detail), 1658, oil on canvas mounted on panel, Private Collection

Join us for a weekend of programs celebrating seventeenth-century Dutch painters and the places that inspired them.

**Saturday, April 25 | 10:00 – 5:00**

**Sunday, April 26 | 11:00 – 6:00**

**West Building Main Floor**  
**Ages 3 and up**

**Family Weekends offer a variety of activities – films, music performances, and hands-on art making – for children and adults to enjoy together.**

**All activities are free. No advance registration is required for these programs; participation in each activity is on a first-come, first-served basis. For more information about the Family Weekend, call (202) 789-3030.**

**The West Building of the National Gallery of Art is located on Constitution Avenue at Sixth Street NW.**

cover: Salomon van Ruysdael, *The Valkhof at Nijmegen* (detail), 1652, oil on panel, The Ivor Collection; Pieter Saenredam, *The Old Town Hall of Amsterdam* (detail), 1657, oil on panel, Rijksmuseum, Amsterdam, on loan from the City of Amsterdam

## Explore

**Saturday and Sunday | all day**  
**West Building, East Garden Court**

Explore the exhibition *Pride of Place: Dutch Cityscapes of the Golden Age* using family activity booklets. Examine the unique Dutch landscape, with its windmills and canals, and learn about the growth of Dutch cities. Visit important sites: the town hall of Amsterdam, the harbors of Hoorn and Dordrecht, a fish market in The Hague, the castle at Nijmegen, the church and central square of Haarlem, and homes in Delft. *Two activity booklets, designed for ages 3–6 and 7–12, will be available at the exhibition entrance.*

## Create

**Saturday and Sunday | all day**  
**West Building, Rotunda**

Create your own Dutch cityscape using rubber stamps and colored pencils. Decorate your scene with stamps inspired by the unique architecture of canal homes, then draw in the sights, sounds, and activities that will bring your seventeenth-century neighborhood to life. *For inspiration, we recommend that you tour the exhibition first.*



Jan van der Heyden, *The Keizersgracht and the Westerkerk in Amsterdam* (detail), c. 1667–1670, oil on panel, Eijk and Rose-Marie van Otterloo

## Discover

**Saturday and Sunday | all day**  
**West Building, Founders Room**

Discover Dutch seventeenth-century homes and family life. View a special dollhouse that faithfully replicates a period Dutch canal house. Take a peek inside and imagine what it would have been like to live in a house like that. Then, at a computer station, play with a virtual Dutch dollhouse where you can arrange furniture and people in various rooms. *You may also visit the Dutch dollhouse online at [www.nga.gov/kids/zone/dollhouse.htm](http://www.nga.gov/kids/zone/dollhouse.htm).*

## Enjoy

**Saturday and Sunday**  
**12:00, 1:00, 2:00, and 3:00**  
**West Building, East Garden Court**

Enjoy Dutch music. Each performance lasts approximately forty minutes.

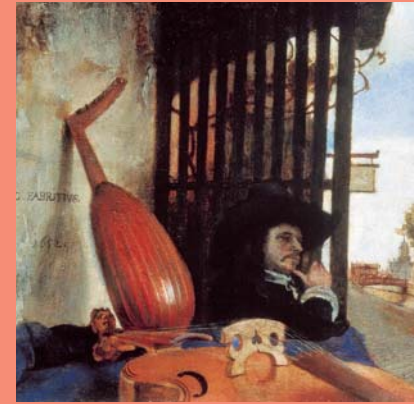
The National Gallery Chamber Players, guest directed by Anne-Marieke Evers, present a musical journey through seventeenth-century Amsterdam. Learn the Dutch children's song "In Holland Staat een huis" (In Holland Stands a House) and experience daily life in the city through the eyes and ears of a child. *At 12:00 and 2:00 pm*

David and Ginger Hildebrand bring to life the sounds of Dutch streets and courts using harpsichord, lute, violin, recorder, hammered dulcimer, and voices. The program is based on secular song settings, folk music, and other period pieces. *At 1:00 and 3:00 pm*

**Family and Teen Programs are made possible in part by the generosity of the Prince Charitable Trusts.**

**The family concerts are made possible in part by the generous support of a National Gallery of Art school docent.**

**The dollhouse is on loan from the collection of Cookie Ziemba.**



Carel Fabritius, *View in Delft* (detail), 1652, oil on canvas on walnut panel, The National Gallery, London, Presented by The Art Fund, 1922

## Pride of Place: Dutch Cityscapes of the Golden Age

Through May 3, 2009

This exhibition was organized by the National Gallery of Art, Washington, and the Royal Picture Gallery Mauritshuis, The Hague.

The exhibition is made possible through the generous support of Greg and Candy Fazakerley and Eijk and Rose-Marie van Otterloo.

It is supported by an indemnity from the Federal Council on the Arts and the Humanities.

For more information about the exhibition: [www.nga.gov/cityscapes](http://www.nga.gov/cityscapes)