

OCS Planning Areas of the Continental United States Depicting Sales Proposed for the 5 Year Program 2007-2012

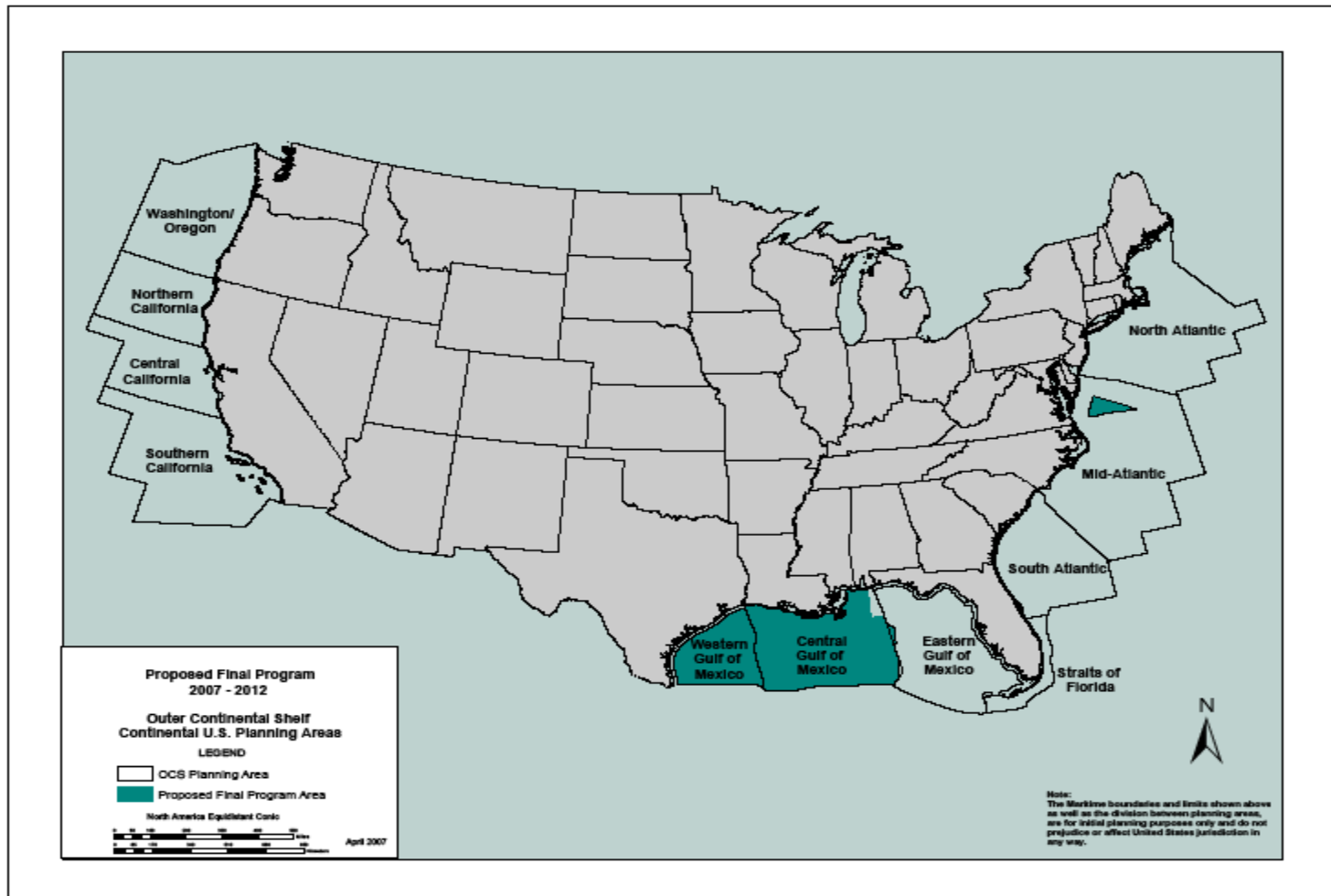


Figure 1

OCS Planning Areas Off of Alaska

Depicting Sales Proposed for the 5 Year Program 2007-2012

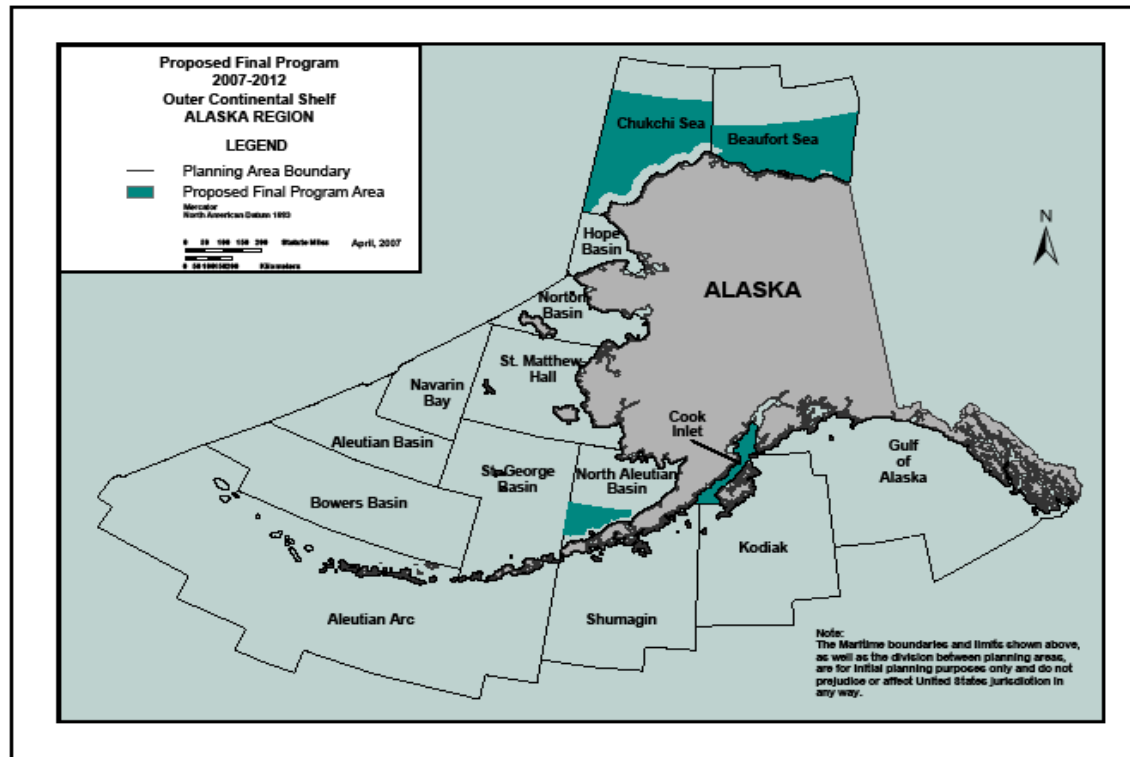


Figure 2

'181 South' Area

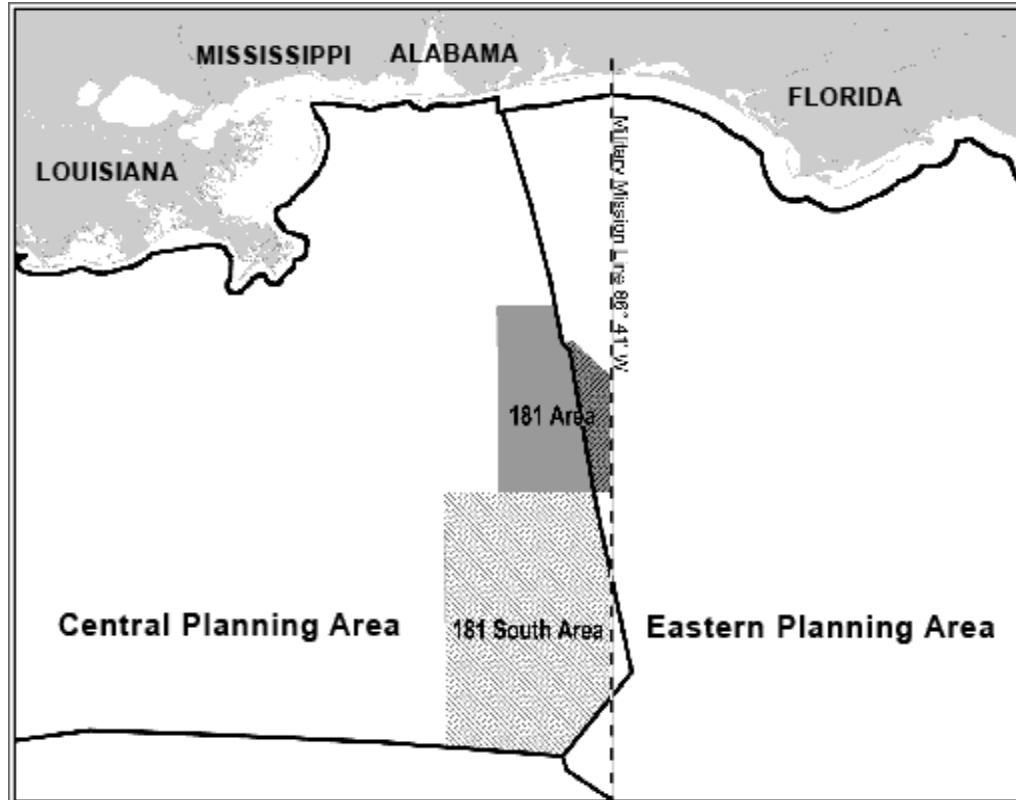


Figure 3

Pace of Leasing

| Fiscal Year* | Leases Issued | Acres Leased | Planning Areas Offered |
|---------------------|----------------------|---------------------|---|
| 2008 | 1,439 | 7,996,920 | ChukSea; CGOM; EGOM; WGOM |
| 2007 | 1,046 | 5,760,793 | BeauSea; CGOM; WGOM |
| 2006 | 763 | 4,122,703 | CGOM; WGOM |
| 2005 | 872 | 4,635,967 | BeauSea; CGOM; EGOM; WGOM |
| 2004 | 888 | 4,689,702 | CGOM; WGOM |
| 2003 | 923 | 4,848,116 | BeauSea; CGOM; EGOM; WGOM |
| 2002 | 804 | 4,192,904 | CGOM; WGOM |
| 2002-2008 | 6,735 | 36,247,105 | BeauSea; ChukSea; CGOM; EGOM; WGOM |

*Sales Held in Fiscal Year/Leases Issued over time

Figure 4

MMS Gulf of Mexico Region 2008 Announced Deepwater Discoveries

| Prospect Name | Area and Block | Operator | Water Depth (feet) | Development Options |
|------------------|------------------------|------------------|-----------------------|-------------------------------|
| Diamond | Lloyd Ridge 370 | Murphy | 9,975 | Subsea or New Gas Hub |
| Hal | Walker Ridge 848 | StatoilHydro | 7,657 | Lease Expired |
| Tortuga | Mississippi Canyon 561 | Noble Energy | 6,302 | Potential Subsea Tieback |
| Freedom/Gunflint | Mississippi Canyon 948 | BP/Noble Energy | 6,090 | Potential Significant New Oil |
| Dalmatian | Desoto Canyon 48 | Murphy | 5,876 | Planned Subsea Tieback |
| Kodiak | Mississippi Canyon 771 | BP | 4,986 | Potential Significant New Oil |
| | Green Canyon 448 | LLOG | 3,266 | Planned Subsea Tieback |
| Gladden | Mississippi Canyon 800 | Newfield | 3,116 | Subsea Gas Development |
| | Mississippi Canyon 503 | LLOG | 3,099 | Planned Subsea Tieback |
| Geauxpher | Garden Banks 462 | Mariner Energy | 2,820 | Subsea Gas Development |
| Anduin West | Mississippi Canyon 754 | Newfield | 2,696 | Subsea Gas Development |
| Sargent | Garden Banks 339 | Deep Gulf Energy | 2,180 | Subsea Gas Development |
| | Mississippi Canyon 72 | LLOG | 2,013 | Planned Subsea Tieback |
| | Viosca Knoll 821 | Walter Oil & Gas | 1,030 | Subsea Gas Development |
| | Green Canyon 141 | LLOG | 1,003 | Potential Subsea Tieback |

Figure 5