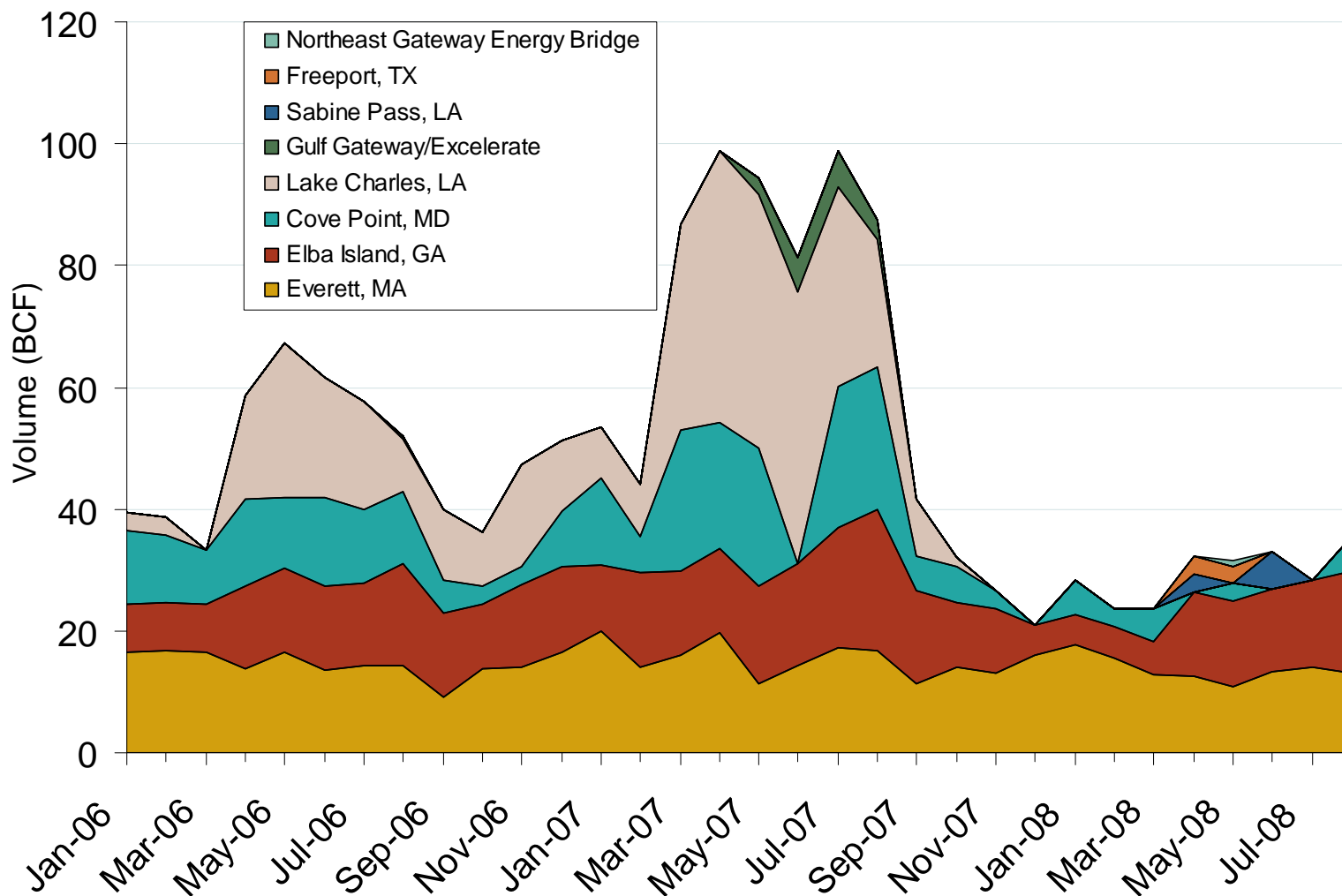


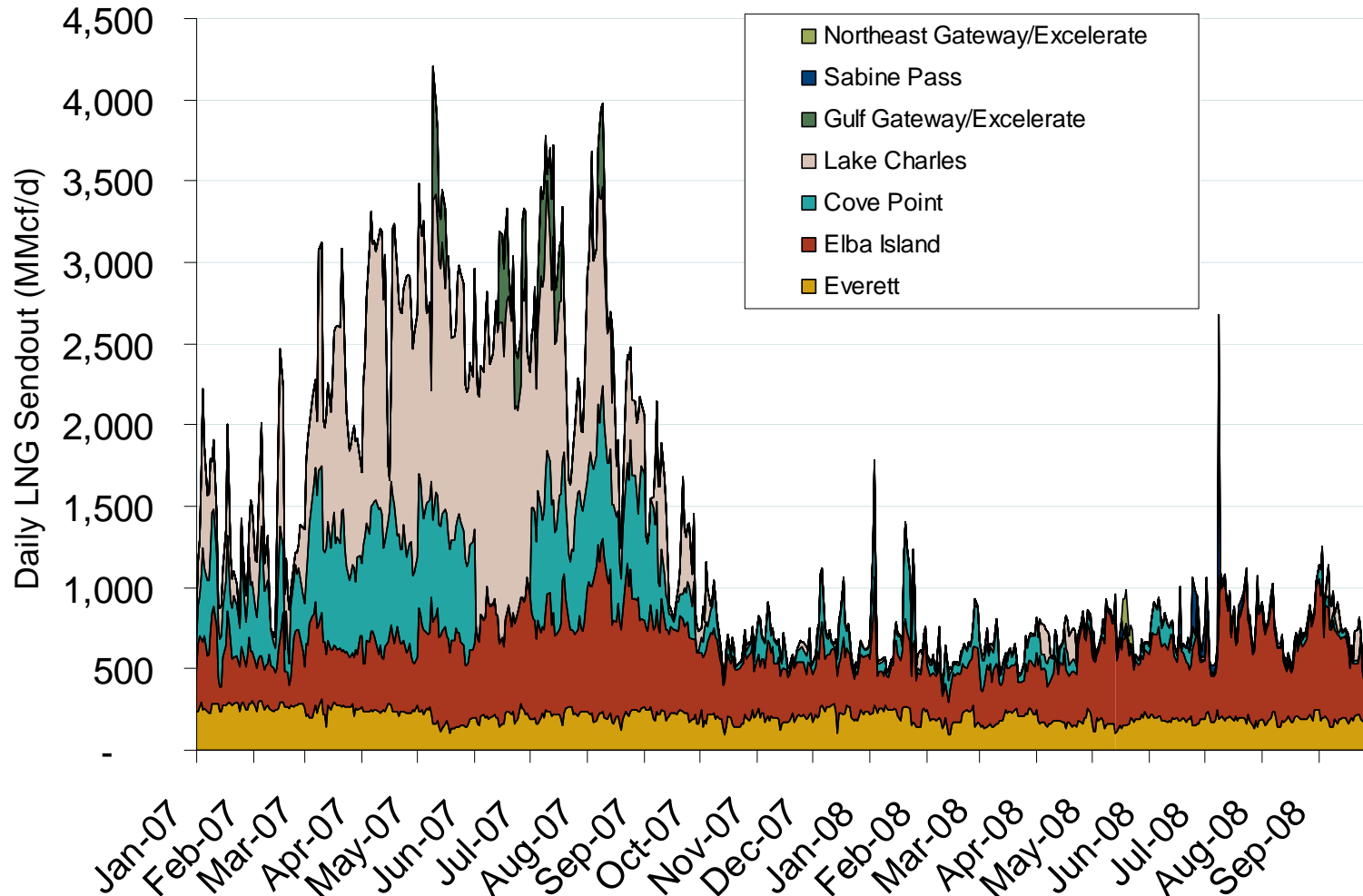
Monthly Gas Imports at Existing U.S. LNG Facilities



Source: Derived from DOE Office of Fossil Energy data.

Updated October 6, 2008

Daily Gas Sendout from Existing U.S. LNG Facilities



Source: Derived from *Bentek* data. Excludes Everett LNG delivered via truck and consumed by the Mystic plant as well as Freeport LNG which flows via intrastate pipelines.

Updated October 6, 2008

3007

World LNG Estimated November 2008 Landed Prices

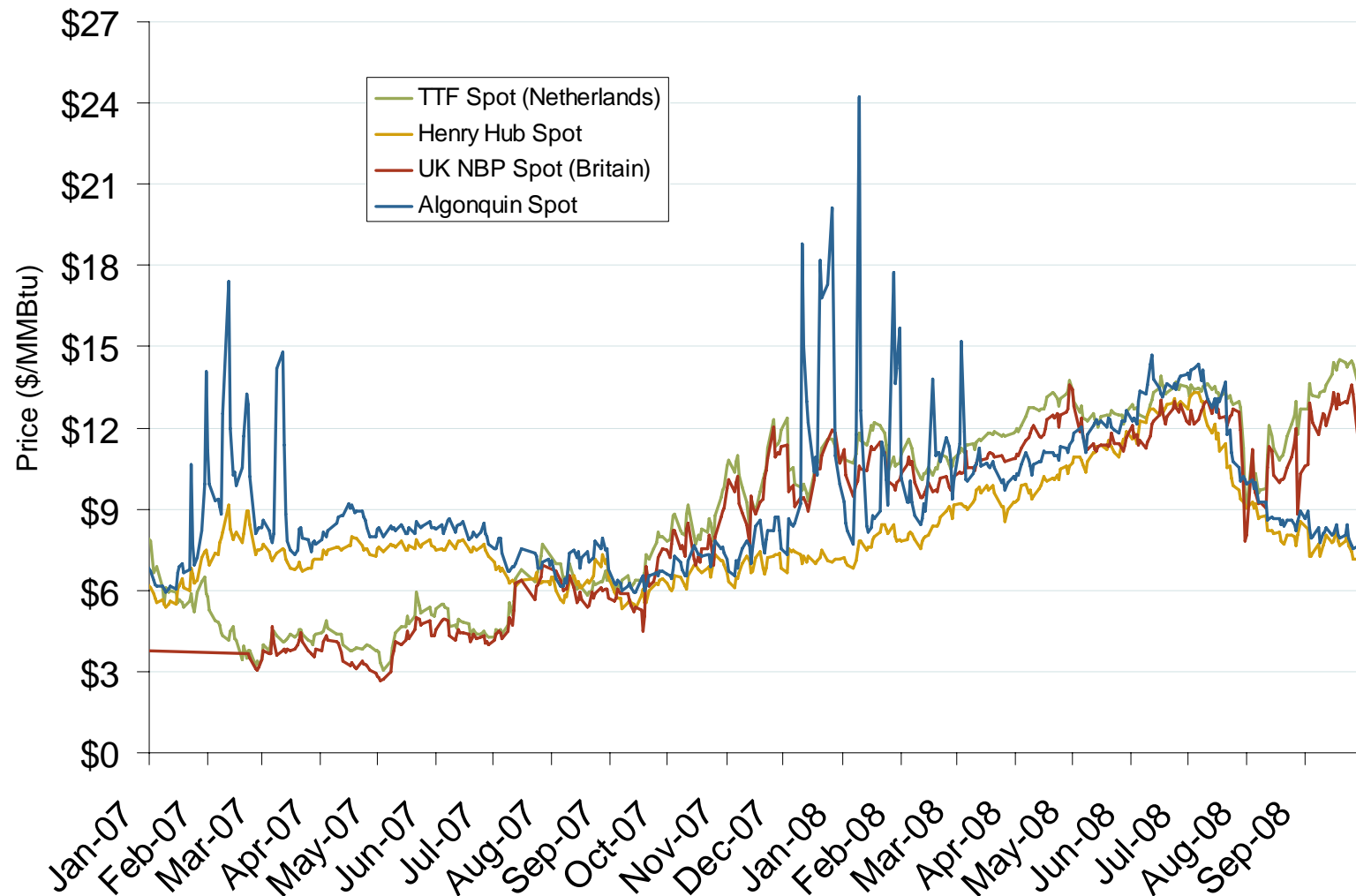


Source: *Waterborne Energy, Inc.* data in \$US/MMBtu.

Updated October 6, 2008

3024

Atlantic Basin European and US Spot Natural Gas Prices

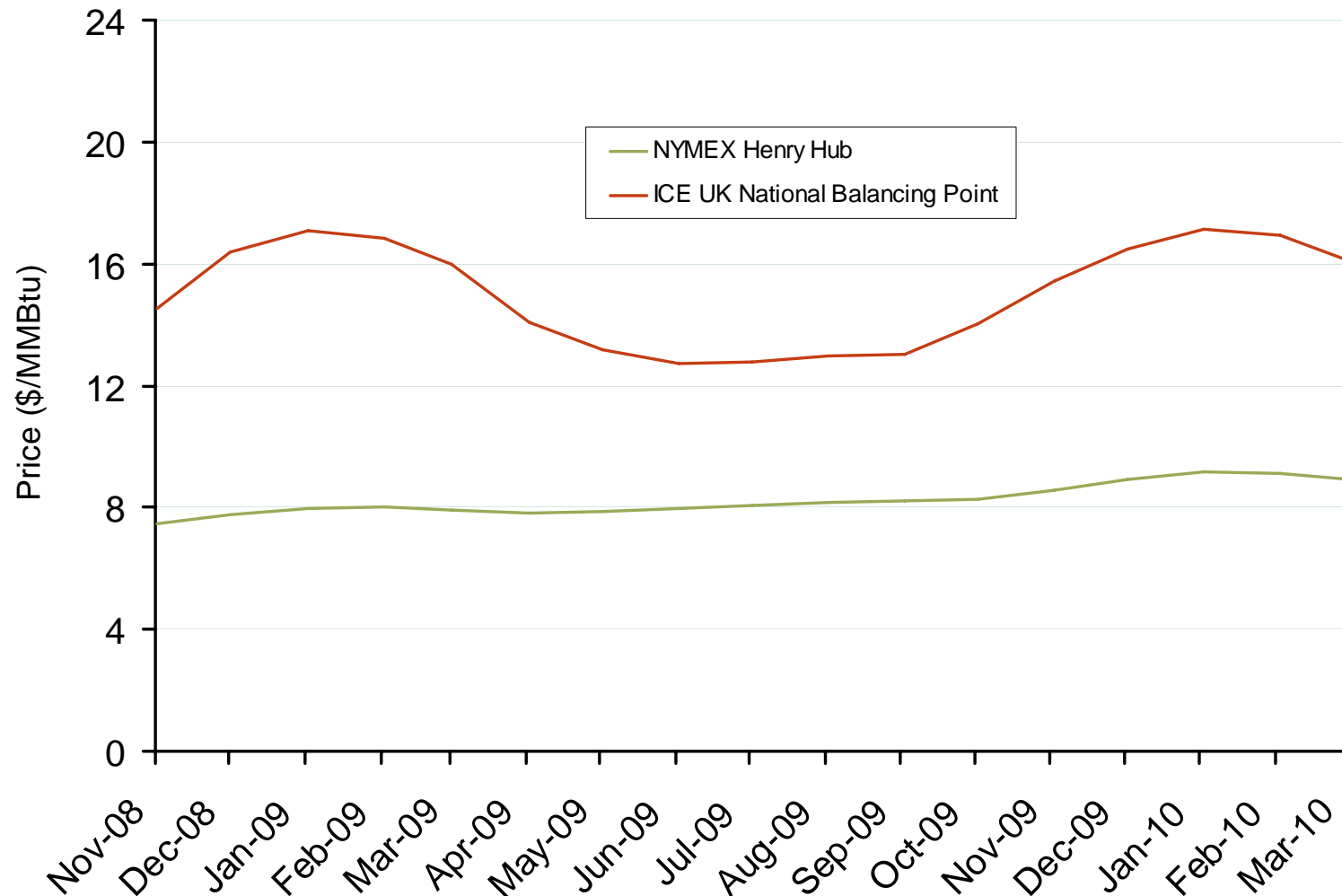


Source: Derived from *Bloomberg* and *ICE* data.

Updated October 6, 2008

3008

NYMEX Henry Hub and ICE UK National Balancing Point Natural Gas Forward Price Curves

Source: Derived from *NYMEX* and *ICE* data.

Updated October 6, 2008

3016