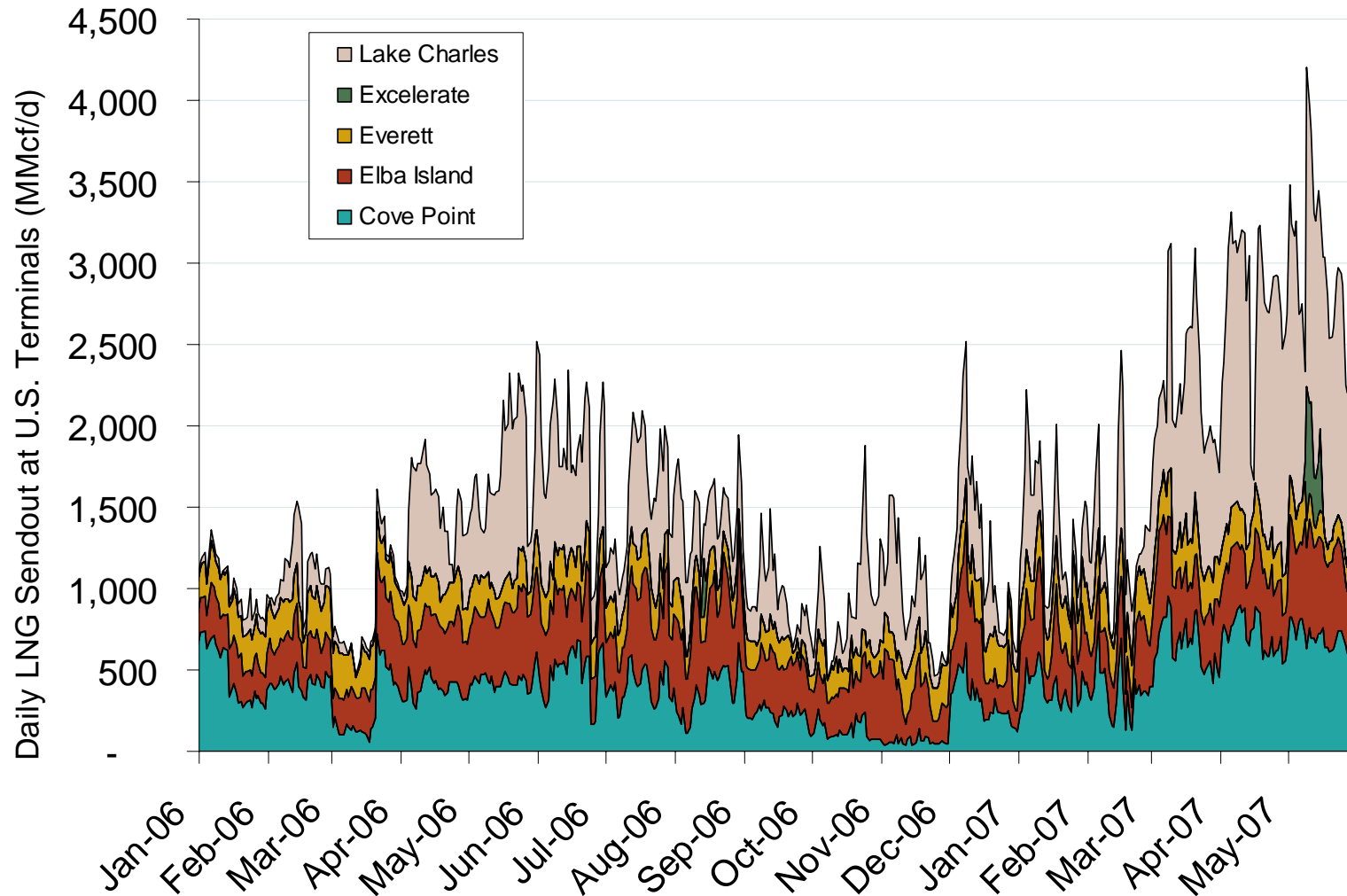


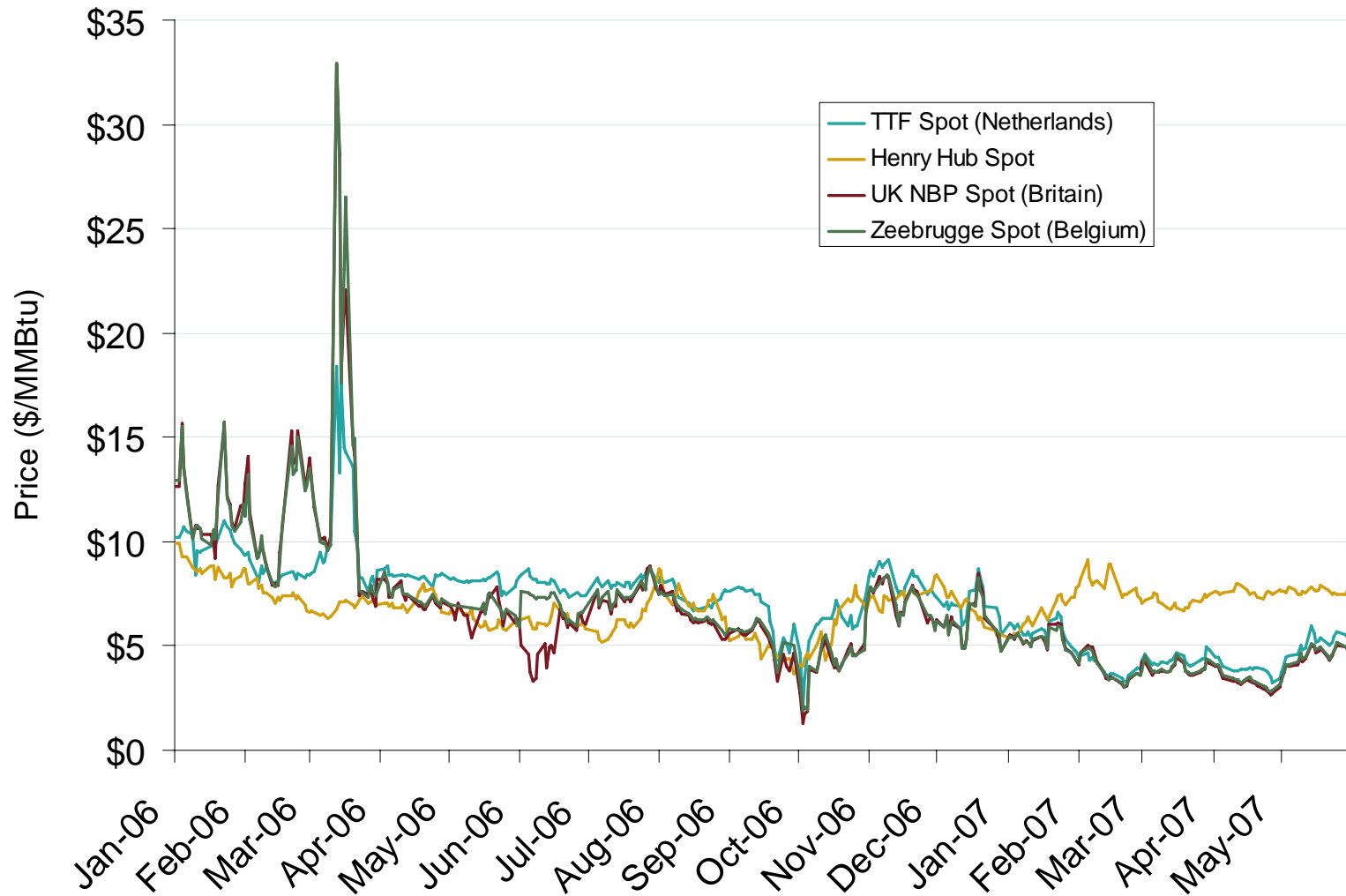
## Daily Gas Sendout from Existing U.S. LNG Facilities



Source: Derived from *Bentek* data. Excludes Everett LNG delivered via truck and consumed by the Mystic plant.

Updated June 7, 2007

## European and U.S. Spot Natural Gas Prices



Source: Derived from *Bloomberg* and *ICE* data.

Updated June 7, 2007