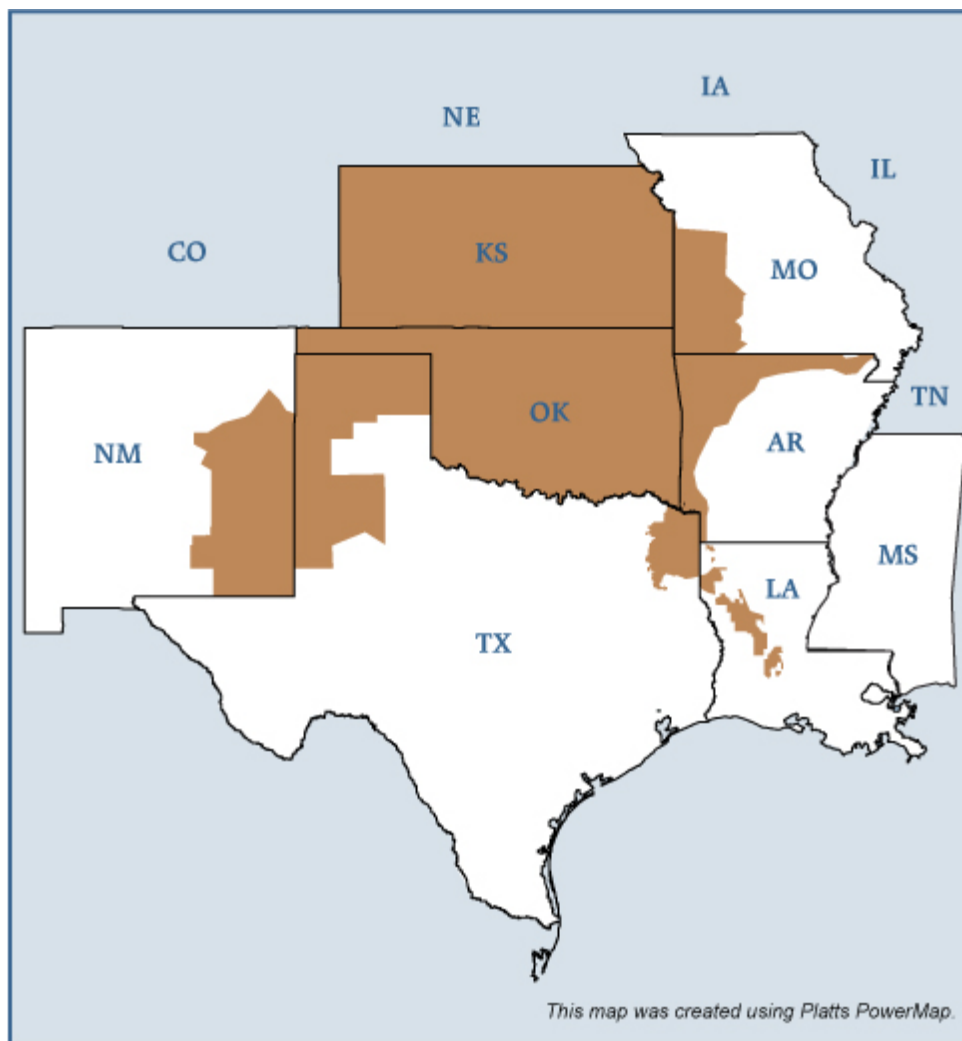


Southwest Power Pool (SPP) Electric Region



Southwest Power Pool Electric Market: Overview and Focal Points

Federal Energy Regulatory Commission • Market Oversight @ FERC.gov

Overview

Geography

States covered: Kansas, Oklahoma and parts of New Mexico, Texas, Louisiana, Missouri, Mississippi and Arkansas

Reliability region: Southwest Power Pool (SPP)

Balancing authorities: American Electric Power (CSWS), Board of Public Utilities (Kansas City, KS) (KACY), City of Lafayette, LA (LAFA), City Power & Light (Independence, MO) (INDN), Cleco Power, LLC (CLEC), Empire District Electric Company (EDE), Grand River Dam Authority (GRDA), Kansas City Power & Light Company (KCPL), Louisiana Energy & Power Authority (LEPA), Missouri Public Service (MPS), OG+E Electric Services (OGE), Southwestern Power Administration (SPA), Southwestern Public Service Company (SWPS), Sunflower Electric Power Corp. (SECI), West Plains Energy (WPEK), Westar Energy, Inc. (WR), Western Farmers Electric Coop.(WFEC)

Load Zones: American Electric Power (CSWS), Empire District Electric Company (EDE), Grand River Dam Authority (GRDA), Kansas City Board of Public Utilities (KACY), Kansas City P&L Power Supply (KCPL), Oklahoma Gas & Electric Trans. (OKGE), Southwest Public Service (SPS), Sunflower Electric Power Corp. (SECI), West Plains Trans. (WPEK), Westar Energy Generation (WR), Western Farmers Electric Coop. (WFEC)

RTO/ISO

Southwest Power Pool (SPP) (granted RTO status in 2004) provides transmission service on the transmission facilities owned by its members and operates the region's real-time energy imbalance service (EIS) market.

[SPP 2006 State of the Markets Report](#)

Market Monitor:

Richard Dillon – Director, Market Development & Analysis
Boston Pacific Company, Inc. – External Market Advisor

Market participants trade physical electricity bilaterally, either directly or through brokers, and through the EIS market.

Updated August 3, 2007

1070

Southwest Power Pool Electric Market: Overview and Focal Points

Federal Energy Regulatory Commission • Market Oversight @ FERC.gov

Generation/Supply

Marginal fuel type: Coal and natural gas

Generating capacity (summer 2006): 45,950 MW

Capacity reserve (summer 2006): 3,723 MW

Reserve margin (summer 2006): 9%

Demand

All time peak demand: Reliability Footprint: 43.3 GW (set August 14, 2007)
Market Footprint: 35.9 GW (set August 14, 2007)

In summer of 2007, demand reached record levels on several occasions due to extremely hot weather.

Peak demand growth: 2.6% (2007–2006)

Summer Peak Demand (GW): 40.5 (2005) 42.2 (2006) 43.3 (2007) Source: Derived from *SPP* Data.

Prices

Annual Average of Platts SPP North Daily Spot Price Index

2004: \$45.19/MWh

2005: \$67.44/MWh

2006: \$55.84/MWh

2007: \$60.21/MWh

Supply and Demand Statistics for SPP

Supply Demand Statistics				
	2004	2005	2006	2007
Summer Generating Capacity MW (1)	45,039	45,768	48,267	49,516
Summer Peak Demand MW	39,383	40,451	42,227	43,167
Summer Reserves MW	5,656	5,317	6,040	6,349
Summer Reserve Margin	14%	13%	14%	15%
Annual Load (GWh)	191,829	194,180	205,104	205,675
Annual Net Generation GWh	NA	NA	NA	NA

Source: Derived from FERC staff discussions with SPP.

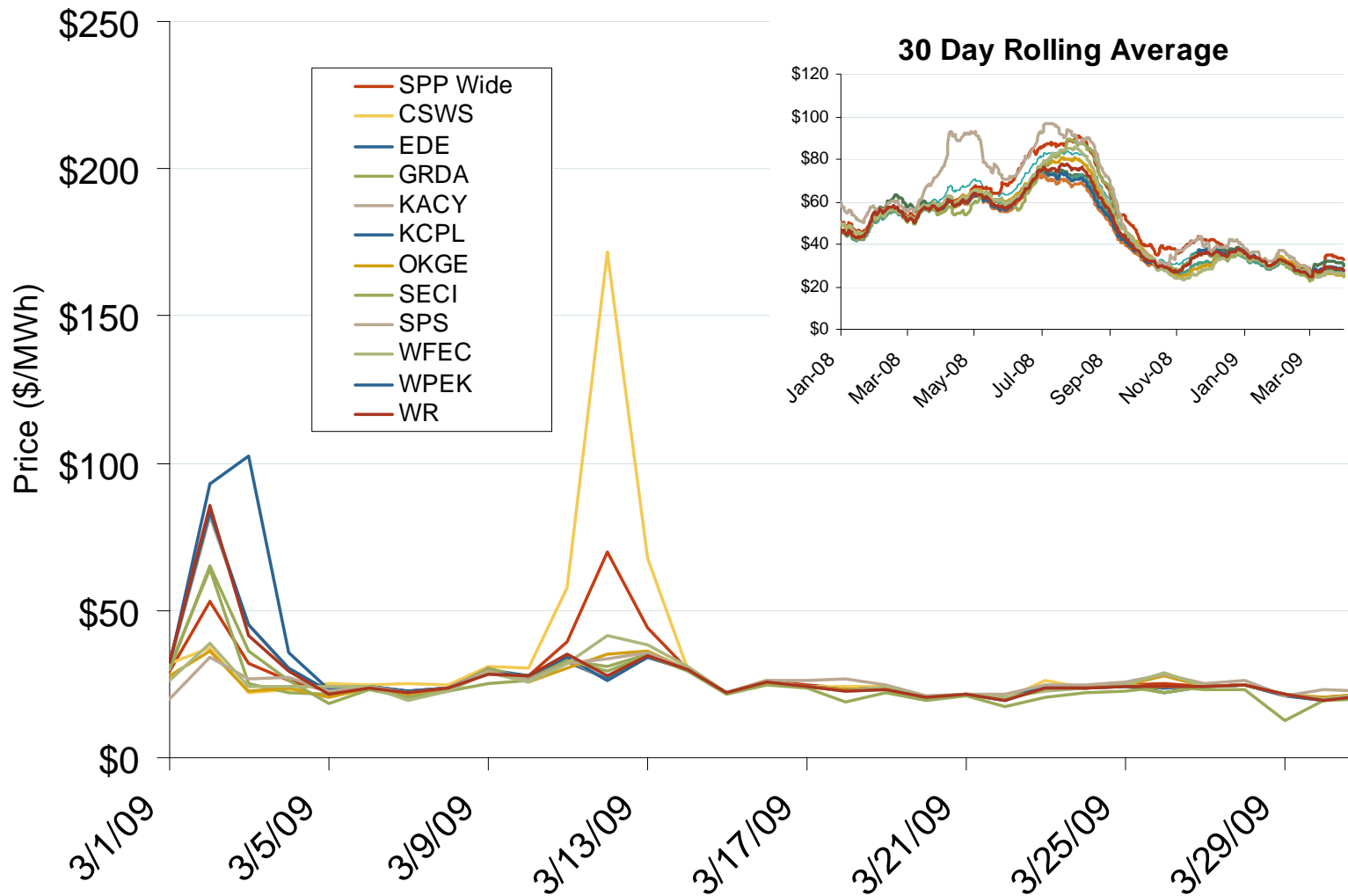
Updated January 22, 2009

1071

Annual Average Bilateral Prices

Annual Average Day Ahead On Peak Prices (\$/MWh)						
	2004	2005	2006	2007	2008	5-Year Avg
SPP North	\$45.19	\$67.44	\$55.84	\$60.21	\$68.77	\$59.48
ERCOT North	\$49.55	\$77.14	\$61.03	\$59.53	\$73.42	\$64.13

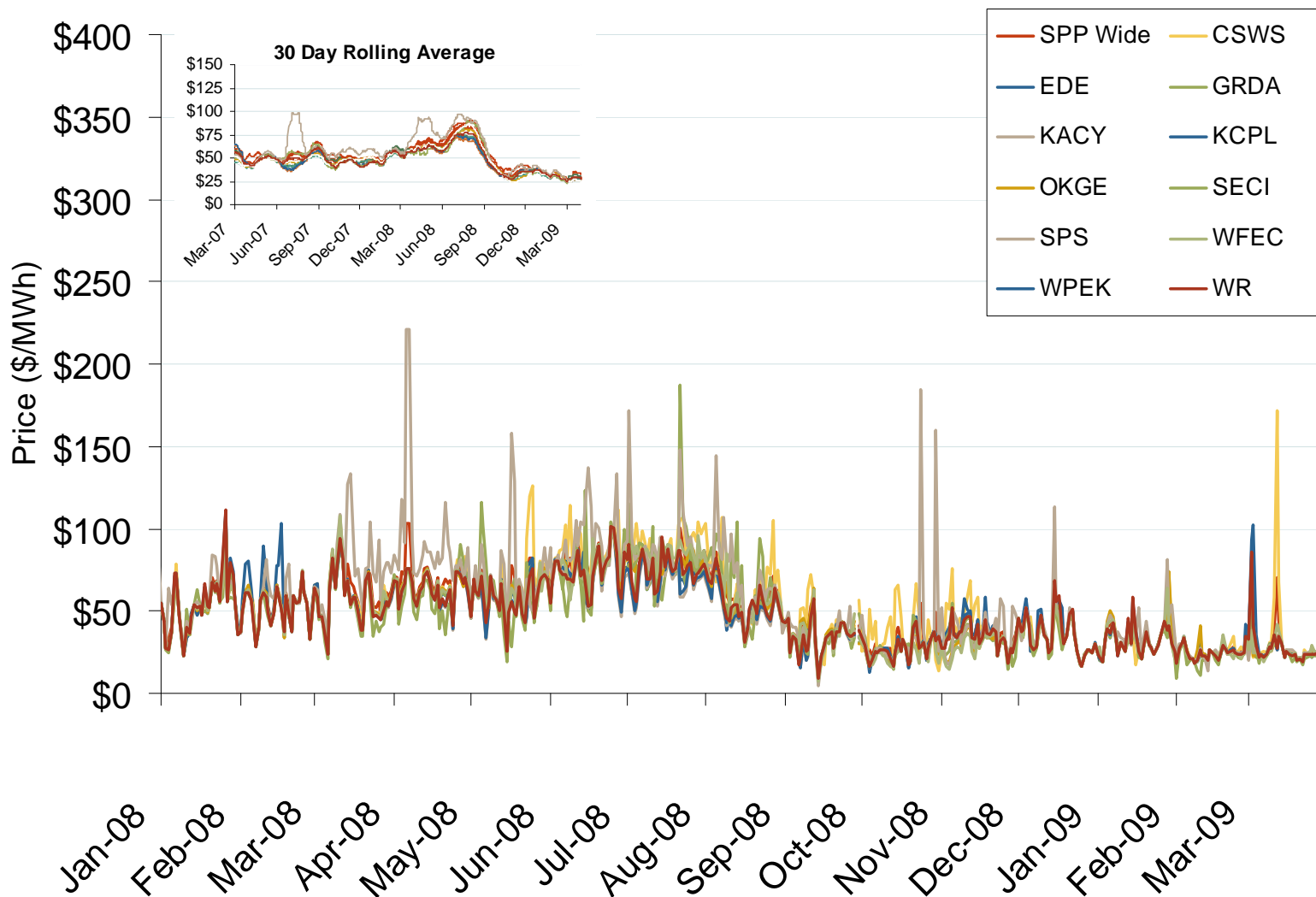
Daily Average of SPP Real Time Prices - All Hours



Source: Derived from SPP data.

Updated April 7, 2009

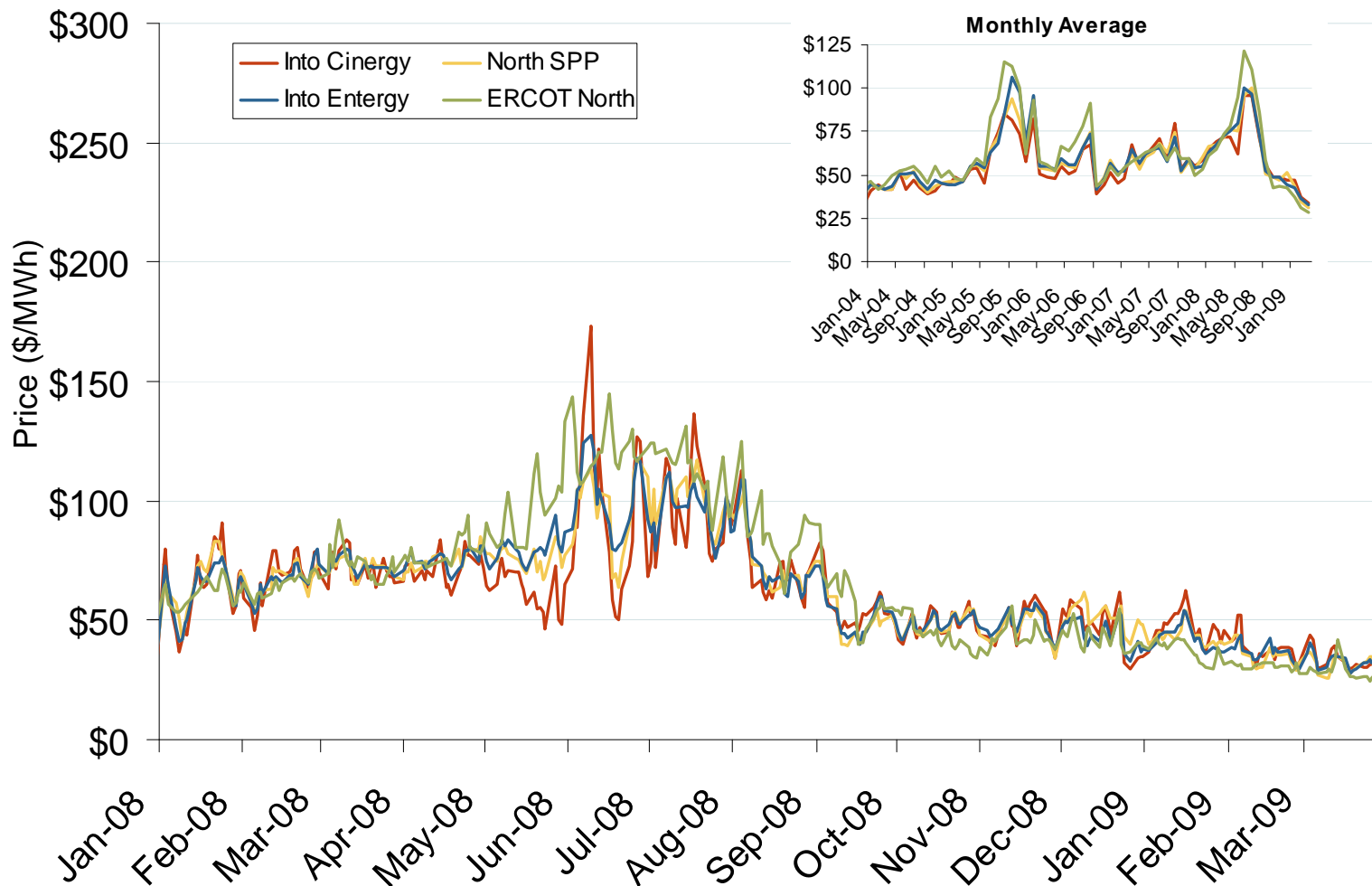
Daily Average of SPP Real Time Prices - All Hours



Source: Derived from SPP data.

Updated April 7, 2009

Central Daily Bilateral Day-Ahead On-Peak Prices



Source: Derived from *Platts* data.

Updated April 7, 2009

1073

Central Daily Bilateral Day-Ahead On-Peak Prices

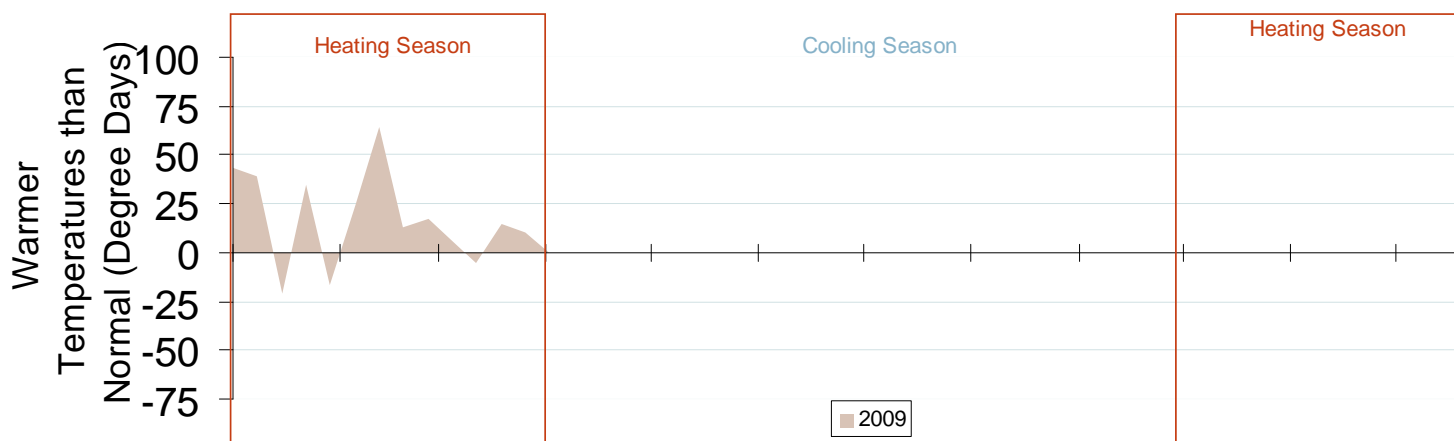
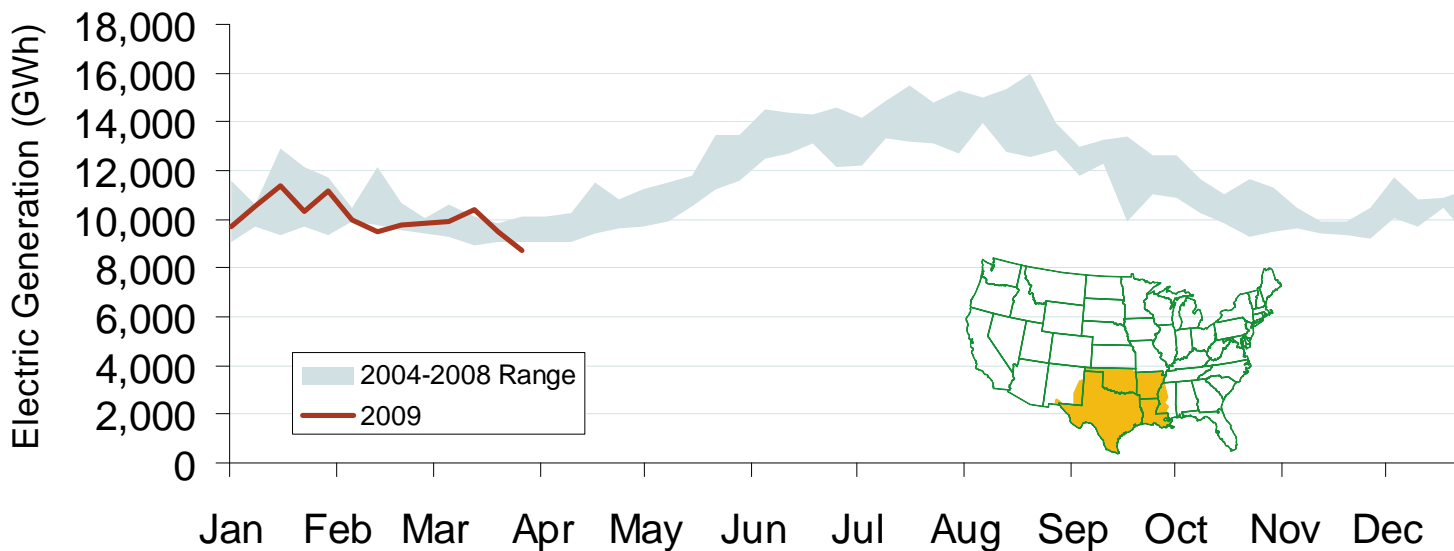


Source: Derived from *Platts* data.

Updated April 7, 2009

15051

Weekly Electric Generation Output and Temperatures South Central Region



Source: Derived from EEI and NOAA data.

Updated April 7, 2009