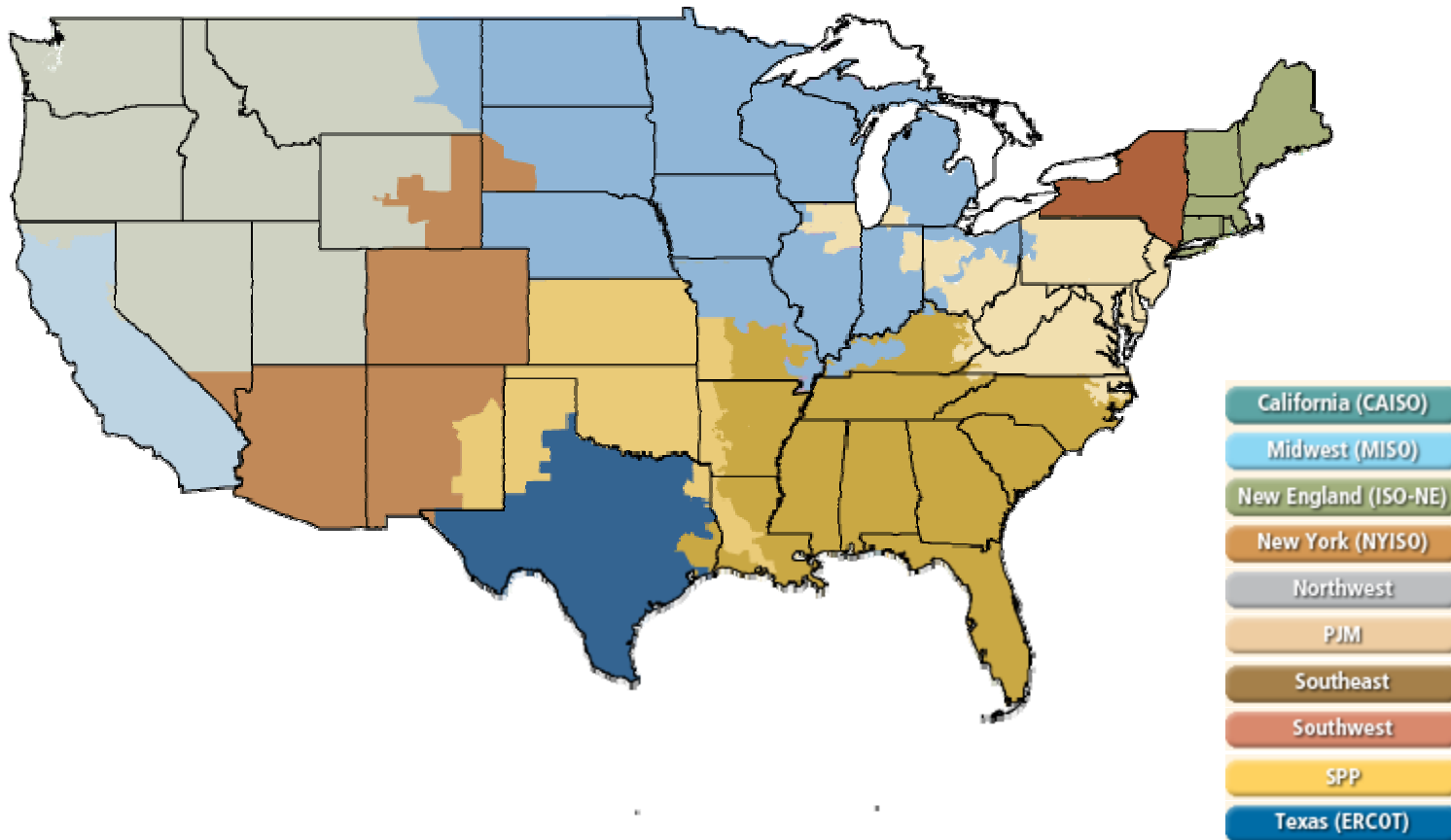
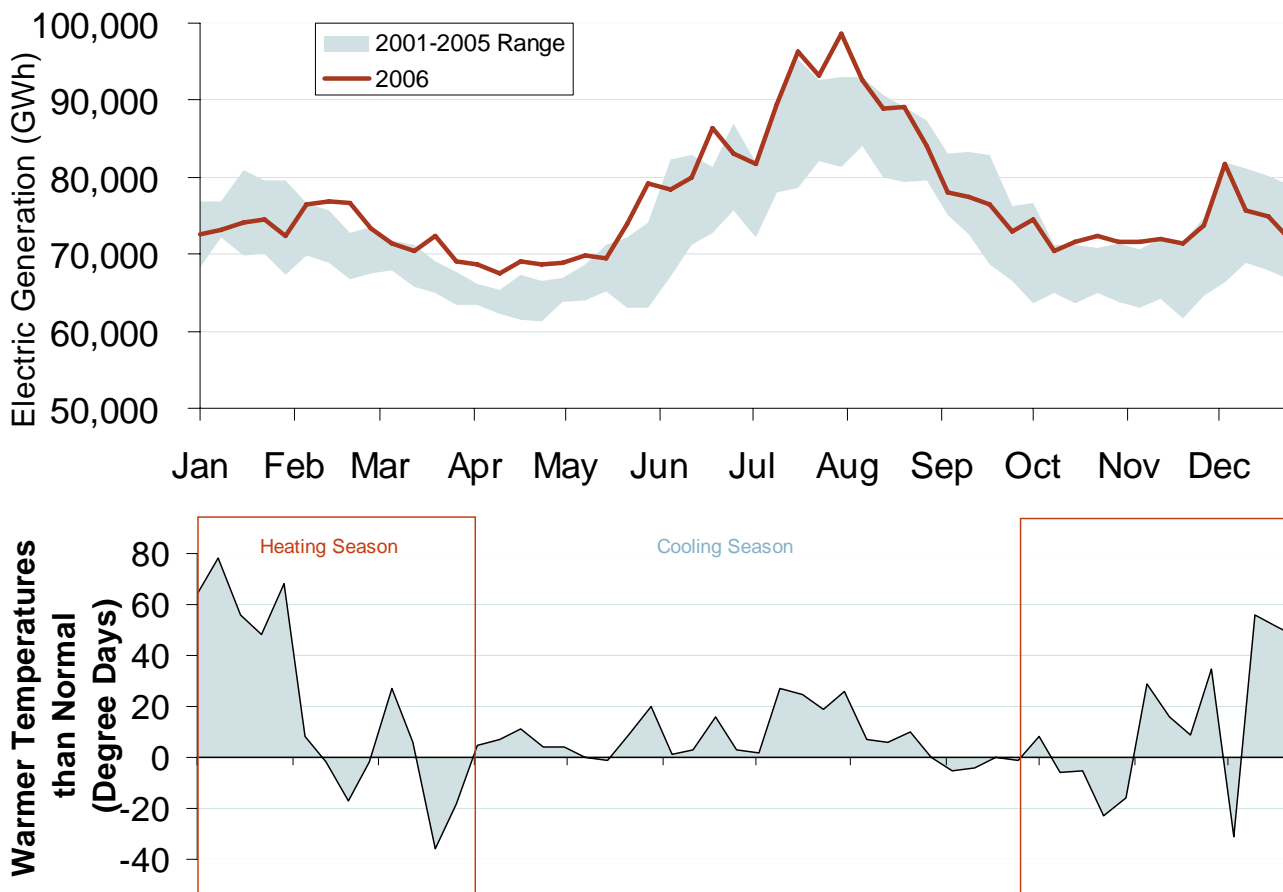


# Electric Market National Overview



**Electric Market Overview: Generation and Temperatures**

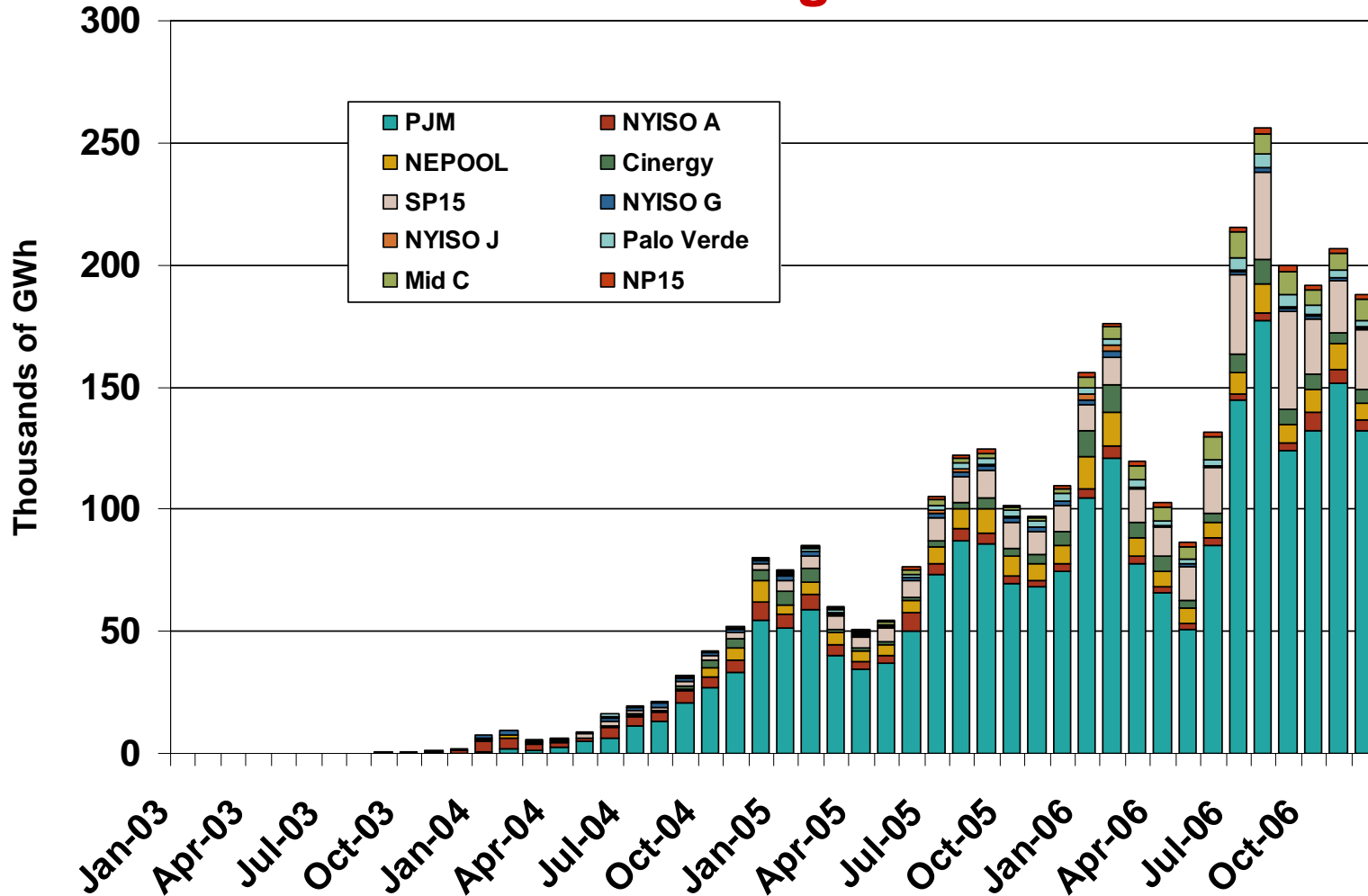
# Weekly U.S. Electric Generation Output and Temperatures



Source: Derived from EEI and NOAA data.

Updated January 17, 2007

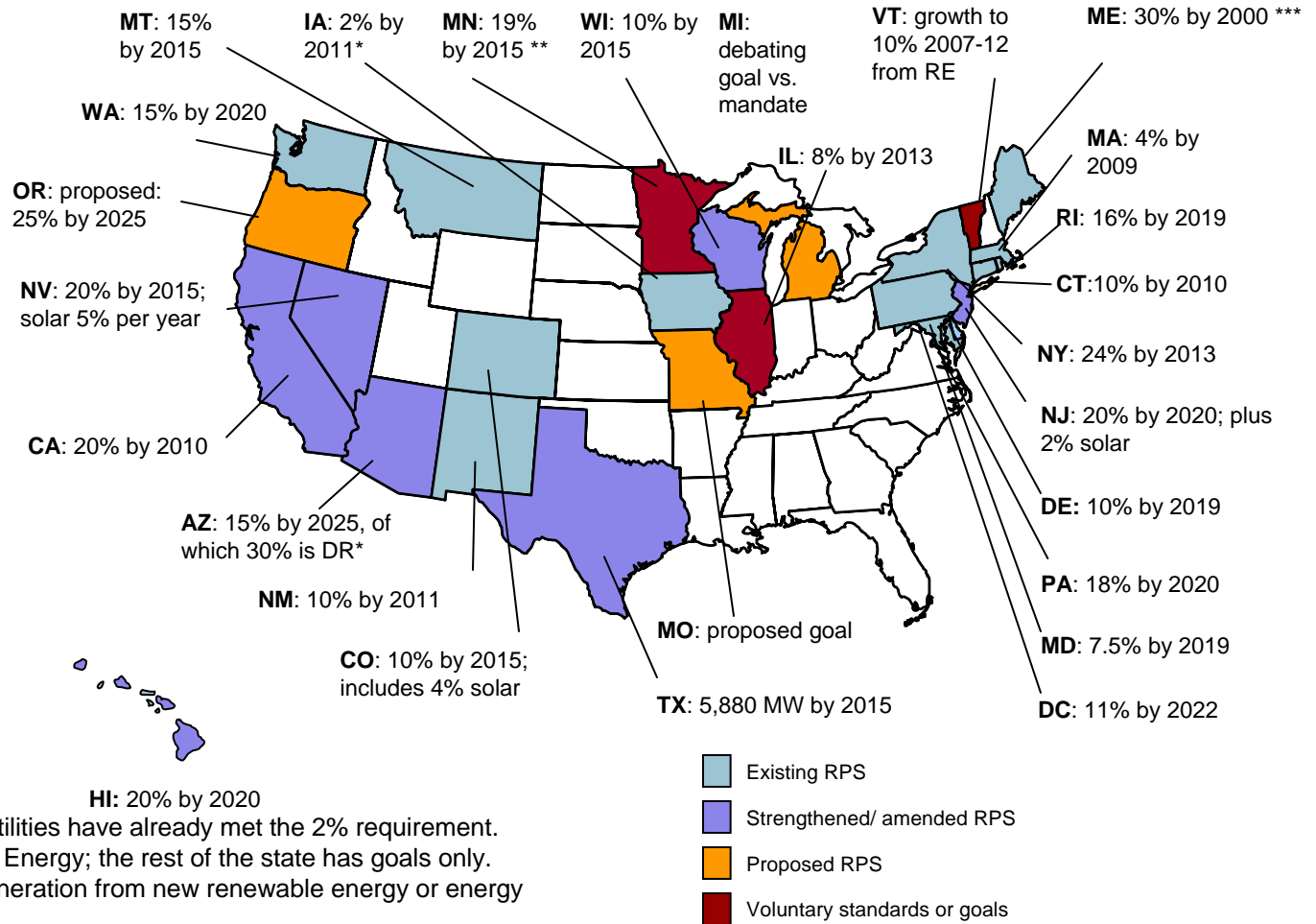
## Financial Trading on ICE



Source: Derived from ICE data. ICE on-peak forward and swap volumes include monthly, dual monthly, quarterly, and calendar year contracts traded for each month.

## Renewable Portfolio Standards (RPS)

- A RPS requires a percent of energy sales or installed capacity to come from renewable resources.
- 24 states and DC have renewable energy standards or goals.
- Washington state passed a RPS by ballot in November.
- Five states amended or extended an RPS in 2006: Arizona, California, Hawaii, New Jersey, and Wisconsin.
- Fourteen states include energy efficiency in an RPS or related rule.
- At least 40% of U.S. load is located in states with a renewable energy purchase obligation.



\* Iowa added a goal of 10% by 2010; utilities have already met the 2% requirement.  
 \*\* Minnesota has a requirement for Xcel Energy; the rest of the state has goals only.  
 \*\*\* Maine added a goal of 10% of new generation from new renewable energy or energy efficiency by 2017 onto its RPS.