

# ESRL Theme Presentation on the Weather-Climate Connection

## Satellite Observations

### Ongoing Activities

- Model intercomparisons
- GPS radio occultation data

### Key Challenges

- Obtaining quantitative transport information (wind profiles)
- Maintaining the status quo in measurements over the near future

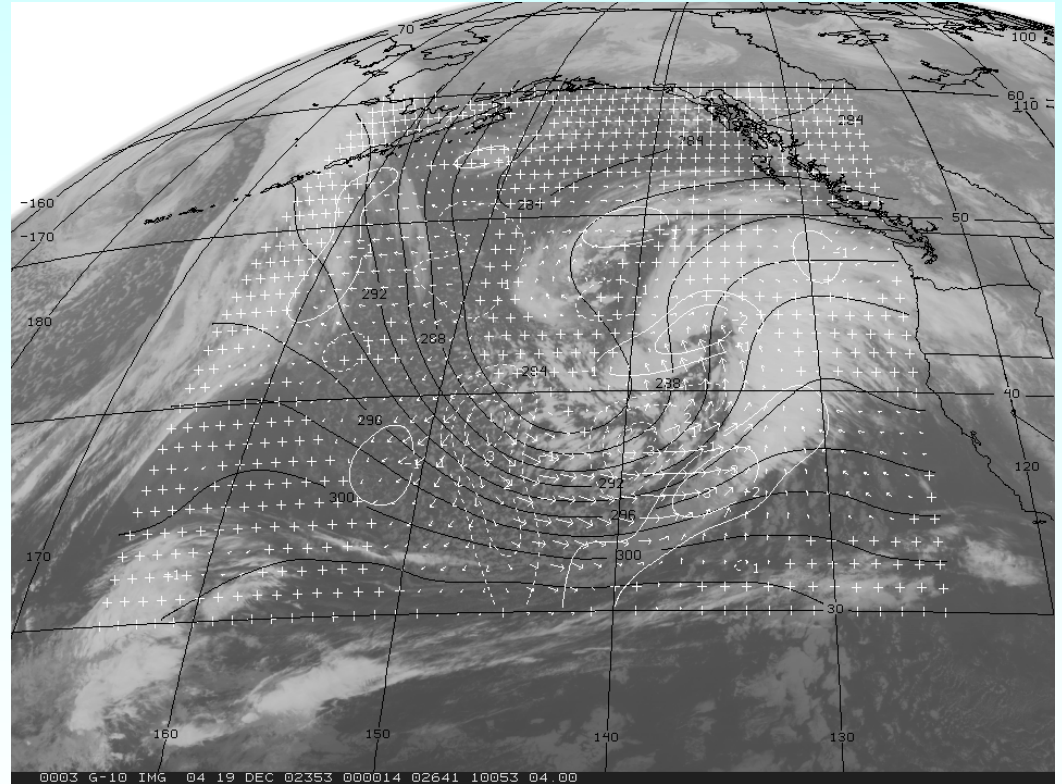


Figure courtesy Jack Dostalek, CIRA/CSU

