

# Oregon - Wind Power Resource Estimates

The wind power resource estimates were produced by TrueWind Solutions using their Mesomap system and historical weather data. This map has been validated with available surface data by the National Renewable Energy Laboratory and wind energy meteorological consultants.

## Indian Reservation

- 1 Grande Ronde
- 2 Siletz
- 3 Coos, Lower Umpqua, and Siuslaw
- 4 Coquille
- 5 Cow Creek
- 6 Klamath
- 7 Warm Springs
- 8 Umatilla
- 9 Burns Paiute
- 10 Fort McDermitt

## Transmission Line\* Voltage (kV)

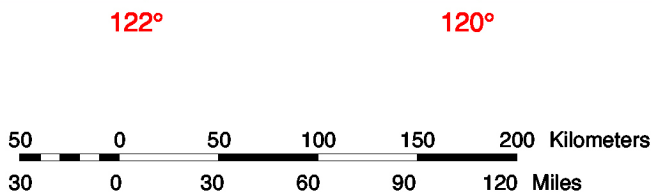
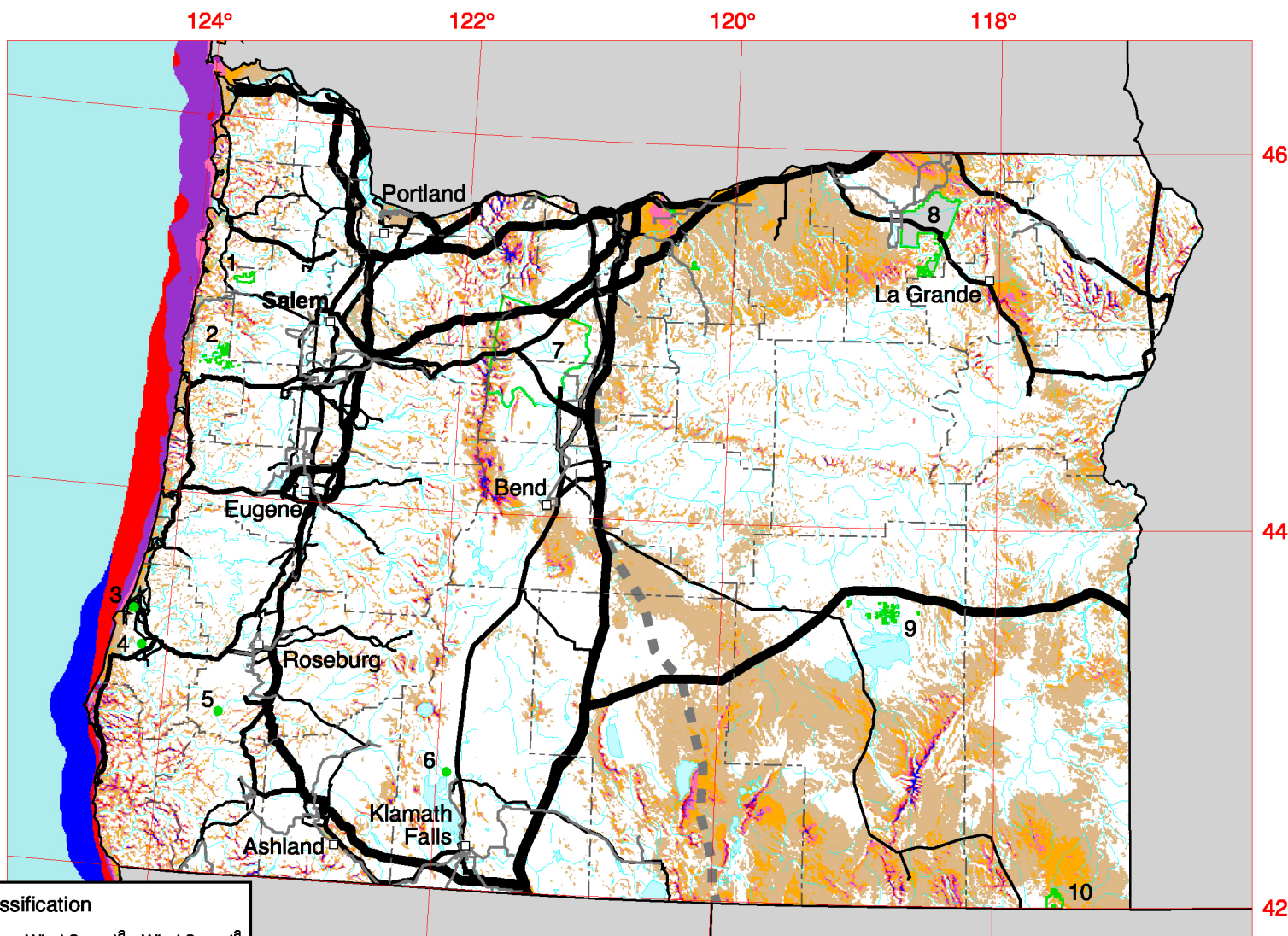
- 69
- 115
- 230
- 345
- 500
- 1000 (DC)

\* Source: POWERmap, ©2002 Platts, A Division of the McGraw-Hill Companies

## Wind Power Classification

Wind Power Class	Resource Potential	Wind Power Density at 50 m W/m <sup>2</sup>	Wind Speed <sup>a</sup> at 50 m m/s	Wind Speed <sup>a</sup> at 50 m mph
2	Marginal	200 - 300	5.6 - 6.4	12.5 - 14.3
3	Fair	300 - 400	6.4 - 7.0	14.3 - 15.7
4	Good	400 - 500	7.0 - 7.5	15.7 - 16.8
5	Excellent	500 - 600	7.5 - 8.0	16.8 - 17.9
6	Outstanding	600 - 800	8.0 - 8.8	17.9 - 19.7
7	Superb	> 800	> 8.8	> 19.7

<sup>a</sup> Wind speeds are based on a Weibull k value of 2.0



U.S. Department of Energy  
National Renewable Energy Laboratory



06-JUN-2002 2.1.4