

Cascade County
Wind Power
PUT WIND TO WORK FOR YOU



Marketing the Wind

Situated on the Eastern slopes of the Rocky Mountains, Cascade County Montana is one of the windiest places in the windiest states in America. More than one-third of Cascade County's 2700 square miles is characterized by powerful, predictable Class 4 wind.



Meteorologists call the wind swept region from Glacier County at the Canadian Border south to Cascade County – the Chinook Zone. Commissioner Peggy Beltrone, who founded the wind marketing program in 2002, calls

the area Don Quixote Canyon, after the man who made windmills famous. No matter how you slice it, Cascade County wind is legendary and county government is poised to help develop it into a clean, green energy source.

With one successful 9 MW commercial wind park in production, the County continues to examine ways to improve its glide path to wind power development. From elected officials who advocate for national and state policy enhancements to land managers who tour developers to prime wind sites, Cascade County works as a team to promote wind energy.

Contact us now (406-454-6810) so we can begin to help you:
Commissioner Peggy Beltrone - pbeltrone@co.cascade.mt.us
Commissioner Lance Olson - lolson@co.cascade.mt.us
Commissioner Joe Briggs - jbriggs@co.cascade.mt.us
GIS Director Tom Mital - tmital@co.cascade.mt.us

About Cascade County

Great Falls, the Cascade County seat, is home to 60,000 people and is at the intersection of rivers, transmission, interstate highway. All ideal compliments for wind development. Existing transmission from Northwestern Energy and the Western Area Power Administration crisscrosses the region, servicing five hydroelectric dams on the Missouri River near Great Falls.



Developer Outreach

Cascade County welcomes developers with rich resources to easily prospect ideal locations for wind development. Digital wind maps bring together into one package all the essential wind data as a free service to wind developers. It is the centerpiece of the wind marketing program. Today the maps, with wind speed/power, land ownership, roads, transmission lines, elevation and other features are available over the internet on the County website. www.co.cascade.mt.us The county also connects developers to business relationships, by introducing them to landowners, contractors, land agents and permitting officials.

The county land managers, in GIS, Planning, Road and Weed & Mosquito serve as conduits for connecting landowners with interested developers. Cascade County's helpfulness includes knowing the capacity and location of transmission lines, avian patterns, and which landowners might be cranky about development. When projects reach the permitting stage, developers are assisted by wind savvy County Planners.

Cascade County officials promoted county wind resources to developers as far away as Florida. One California executive reacted to the map with these words, "You've just cut weeks of costly ground time that we would have had to perform just to 'prospect' your wind resources."



Anemometer Assistance

Cascade County helped Horseshoe Bend wind park lower costs in the critical early stages of development by providing at no charge a 40 meter tower and anemometer. Thus the developers tested wind data for financing, while the county was able to put this information in the public domain. www.undeerc.org/wind/states/MT.asp The same offer has been extended to other developers. Data points on

the Montana map indicate public commercial scale wind data in and around Cascade County.

Financial Assistance

Cascade County working in partnership with Sweetgrass Development, Great Falls Development and the Montana Department of Commerce is committed to providing wind developers with a full range of financial assistance tools. These tools include; Tax Increment Funding, SBA 504 loans, a locally managed revolving loan fund, Industrial Development bonding through Cascade County, an Intermediary Relending Program, CDBG Economic Development Grants and a variety of industry specific tax incentives available under state and federal law.

Permitting Process – At-A-Glance

Wind generators/wind farms are allowed in three county zoning districts:

- “A” Agricultural - allowed by special permit - fee \$250.00
- public hearing to set conditions of approval
- Allowed by right in both Industrial districts: I1 and I2
- fee \$35.00

Advocating for Transmission

The Transmission resource needed to carry electricity generated by Cascade County wind is good, and set to improve. The proposed 216 mile Montana Alberta tie (MATL) transmission line from Lethbridge to Great Falls is in the final regulatory stages. This project will open pathways for 600 MW of new wind power in the region. Commissioner Peggy Beltrone chairs the American Citizens advisory committee for the MATL project. “If we can help landowners and transmission companies gain mutual understanding, we have improved the market for our wind,” Beltrone said.



Horseshoe Bend

In January 2006, the county’s first commercial scale wind park started producing energy. The Horseshoe Bend Wind Park is owned and operated by United Materials, a local aggregate and highway construction company.

Cascade County was able to provide a direct assistance link to the developer, lowering early costs by borrowing an industrial grade meteorological tower from the state of Montana. The 40 meter tower gathered wind speed and wind power data at the commercial level for more than one year.

Furthermore, Energy Development Group is actively investigating other opportunities in the County due primarily to the County’s technology and established protocol for wind park development. James Carkulis expounds, “The number one concern associated with all business ventures is how to mitigate risk. Cascade County has led Montana and the nation in assuring continuity between business, community, and government in wind resource development.”

Aggressive Community Outreach

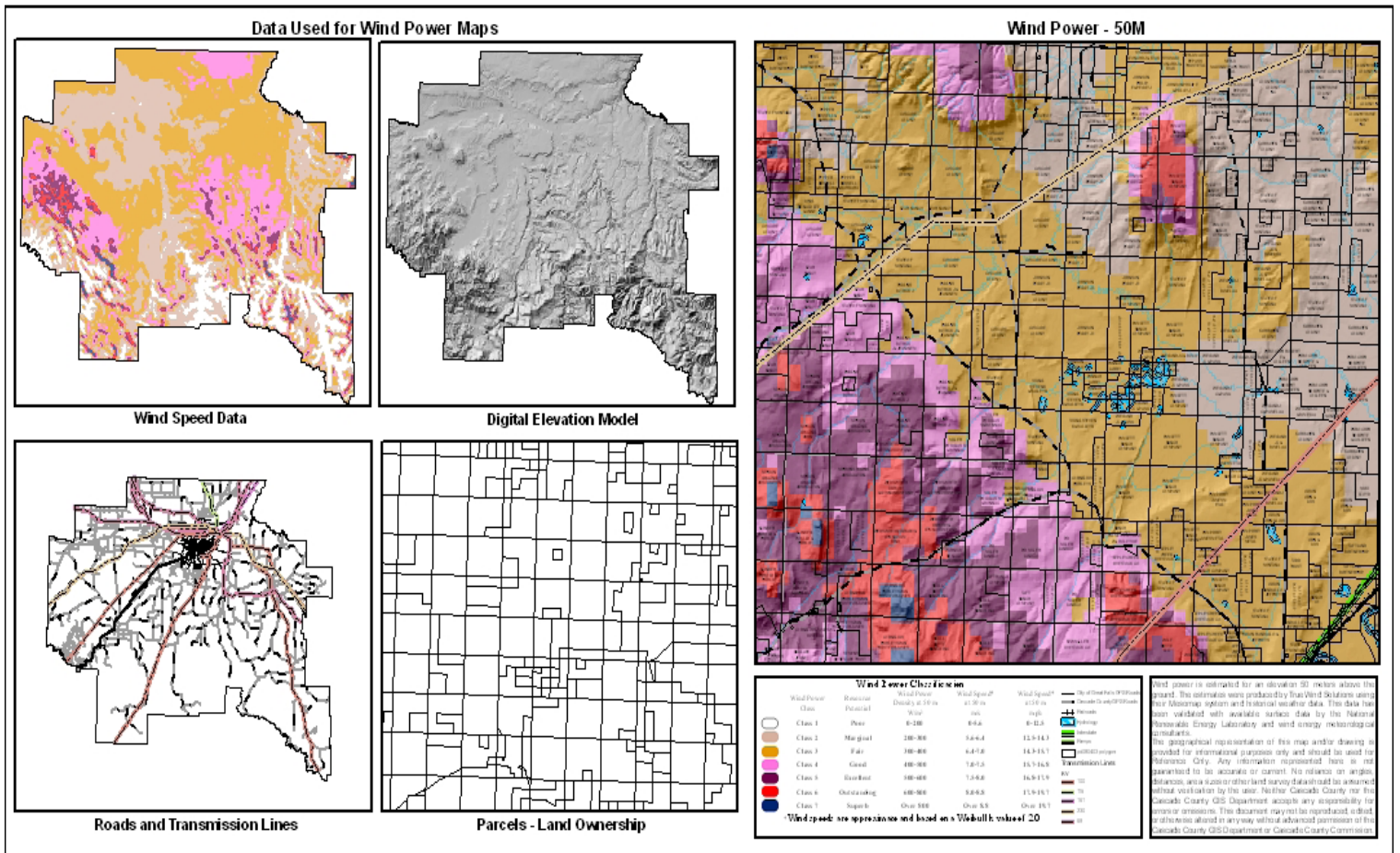
Connecting wind developers to the County is only part of the equation. Land owners also needed to know about their resource and how to interact with wind power developers. Landowners and developers drop into the Cascade County GIS department for assistance and printed wind maps from director Tom Mital.

Award Winning Program

The Center of Sustainable Communities recognized Cascade County’s Wind Marketing Program with a 2005 Sustainable Community Award.



“Cascade County has established itself as the most ‘wind friendly’ county in Montana,” Montana Wind Working Group coordinator Van Jamison said. “The County distinguished its wind assets from the generic ‘windy area’ somewhere else and offered developers a complete product.”



10 Reasons to Choose Cascade County Wind

- 1 **Class 4 wind in 1/3 of the County**
- 2 **Free Value-Added Maps**
- 3 **Transmission Hub**
- 4 **Wind Measuring Assistance**
- 5 **Commercial Scale Data Archive**
- 6 **Free Tours of Potential Sites**
- 7 **Easy, Understandable Permitting**
- 8 **Links to Financial, Tax incentives**
- 9 **On the Ground Team Advocating your Project**
- 10 **Award Winning Wind Marketing Program**



Contact Us

Cascade County Commission
 325 2nd Ave. North Room 111
 Great Falls, MT 59401
 Phone: (406) 454-6810
 Email: commission@co.cascade.mt.us
 Web: www.co.cascade.mt.us