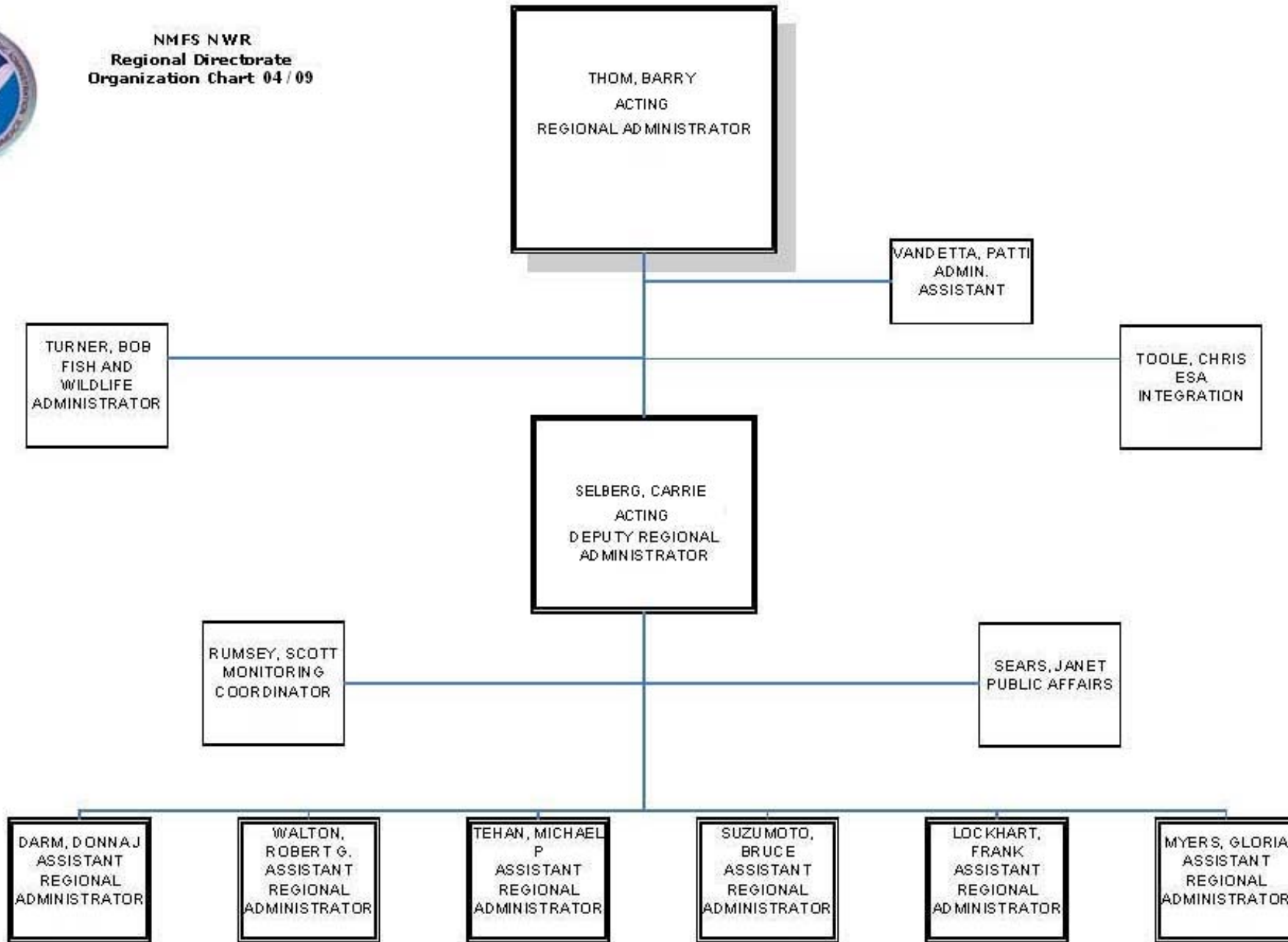


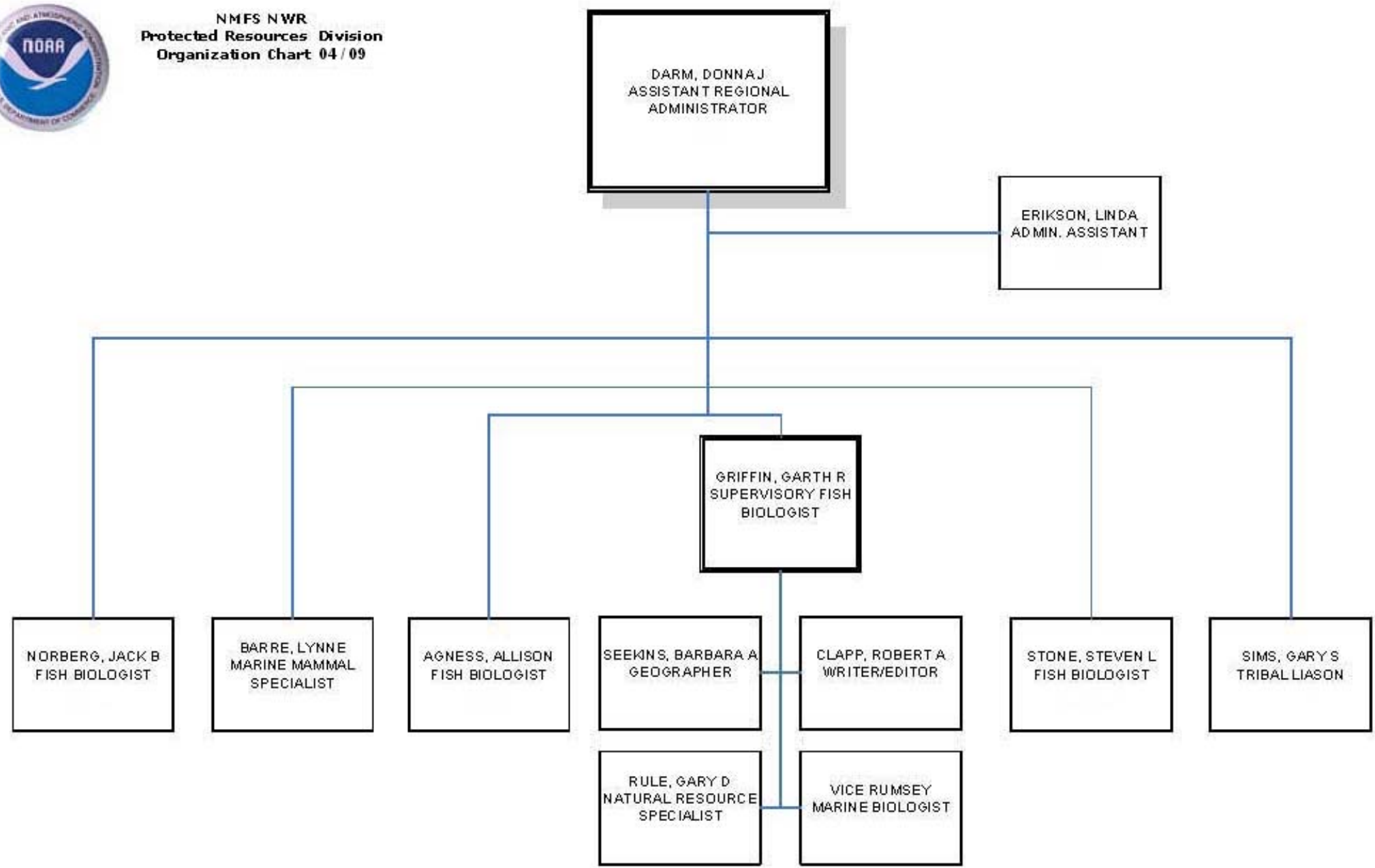


NMFS NWR
Regional Directorate
Organization Chart 04 / 09



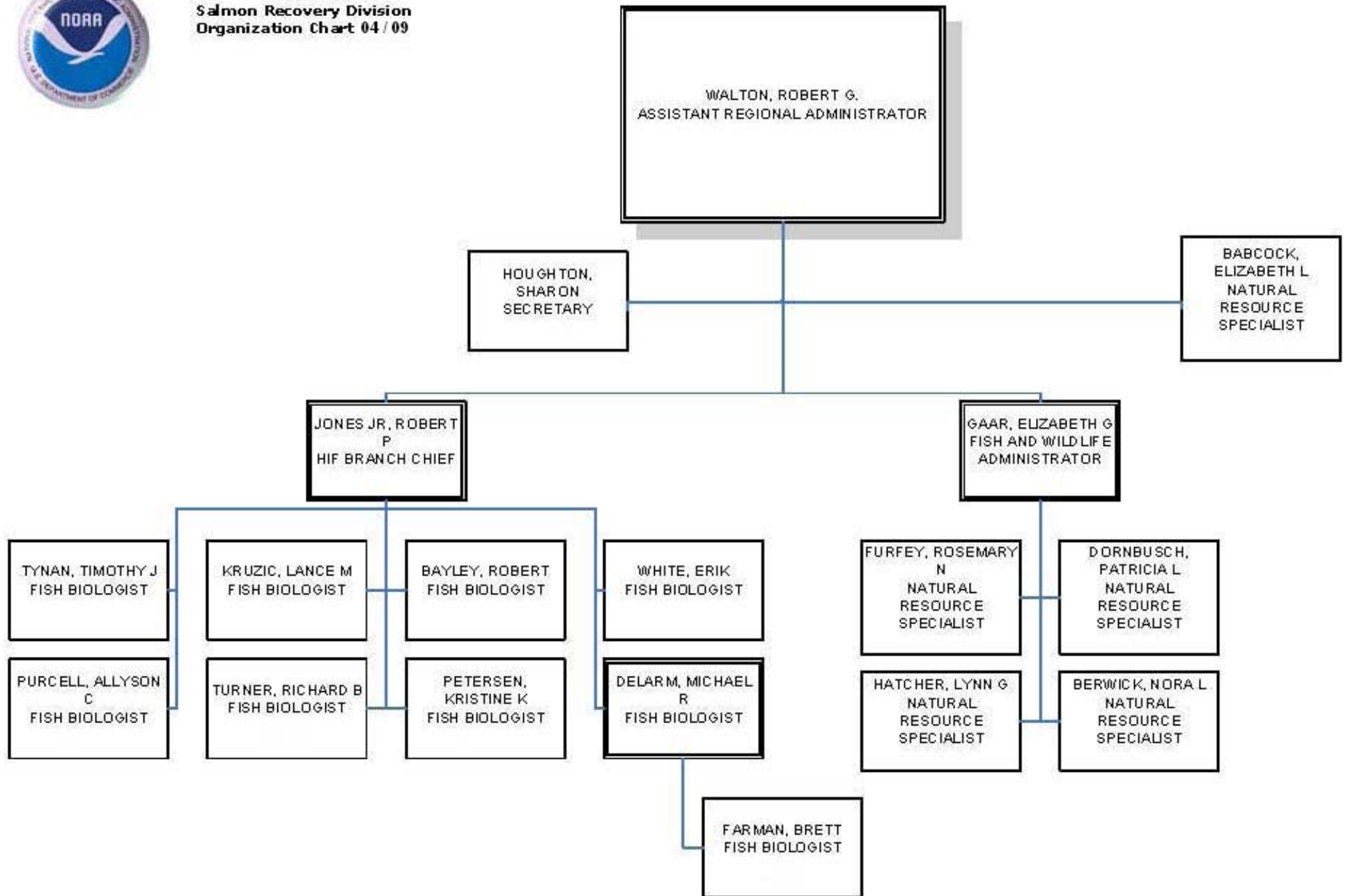


NMFS NWR
Protected Resources Division
Organization Chart 04/09





NMFS NWR
Salmon Recovery Division
Organization Chart 04/09





NMFS NWR
Sustainable Fisheries Division
Organization Chart 04 / 09

LOCKHART, FRANK
ASSISTANT REGIONAL ADMINISTRATOR

NICKERSON, MARYANN
SECRETARY

DEREYNIER, YVONNE L
FISH MANAGEMENT SPECIALIST

COPPS, STEPHEN
FISH BIOLOGIST

VICE DE REYNIER
GROUND FISH
BRANCH CHIEF

DYGERT, PETER H
SALMON
BRANCH CHIEF

FREESE, STEPHEN P
PERMITS AND
ECONOMICS
BRANCH CHIEF

RENKO, BECKY L
FISH BIOLOGIST

JOUBERT, V MICHELE
MANAGEMENT AND PROGRAM ANALYST

SCHUMACHER, ROBERT J
MANAGEMENT AND PROGRAM ANALYST

PATINO, ENRIQUE
FISH BIOLOGIST

DONNELLY, ROBERT F
FISH BIOLOGIST

RUTTER, LARRY G
FISH BIOLOGIST

JACKSON, EVELYN U
OFFICE AUTOMATION CLERK

BISHOP JR, JOHN K
FISH MARKETING REPORTER

ARENTZEN, GRETCHEN
FISH MANAGEMENT SPECIALIST

CANTILLON, DAVID C
RESOURCE MGMT SPECIALIST

SIMMONS, C DELL
NATURAL RESOURCE SPECIALIST

FORD, KEVIN A
TRADE SPECIALIST

BURDEN, MERRICK J.
ECONOMIST

VICE GOEN
FISH MANAGEMENT SPECIALIST

BISHOP, SUSAN
FISH BIOLOGIST

WILLEY, ALLEN
ADMINISTRATIVE SPECIALIST

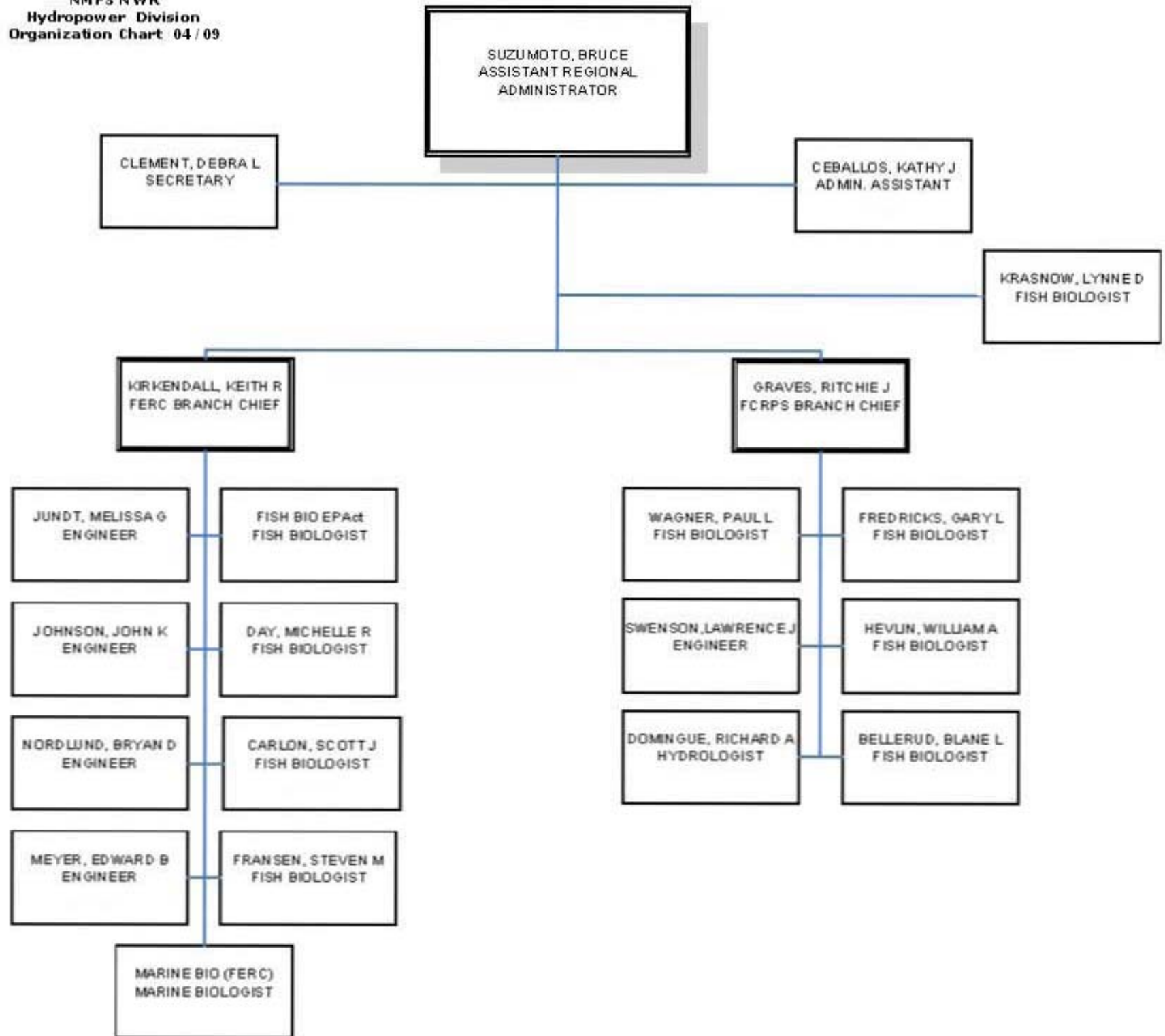
FARRELL, PATRICIA M
PERMITS SPECIALIST

RANTA, RICHARD A
FISH MARKETING SPECIALIST

MCAVINCHY, SARAH
FISH BIOLOGIST

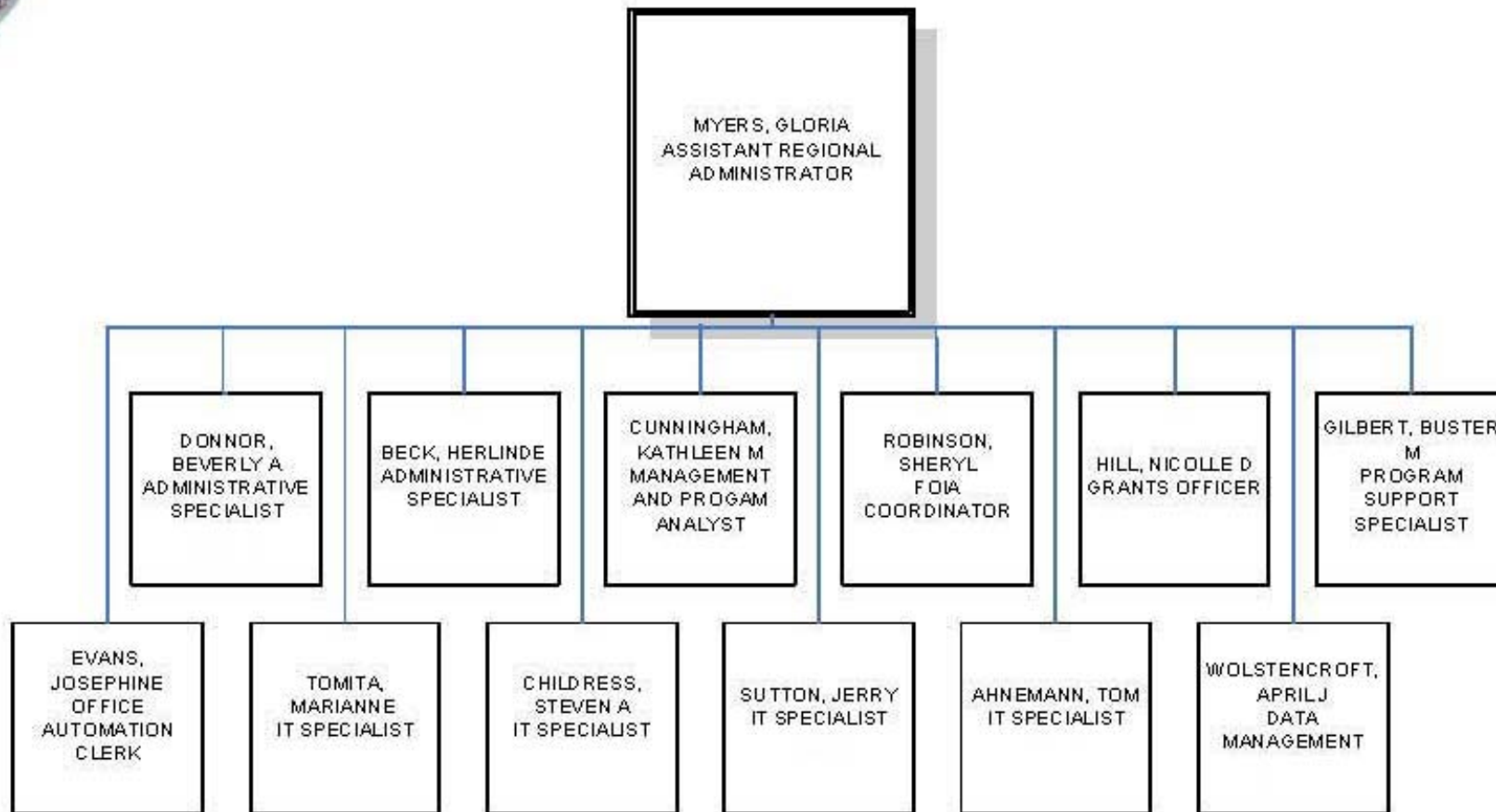


NMFS NWR
Hydropower Division
Organization Chart 04 / 09



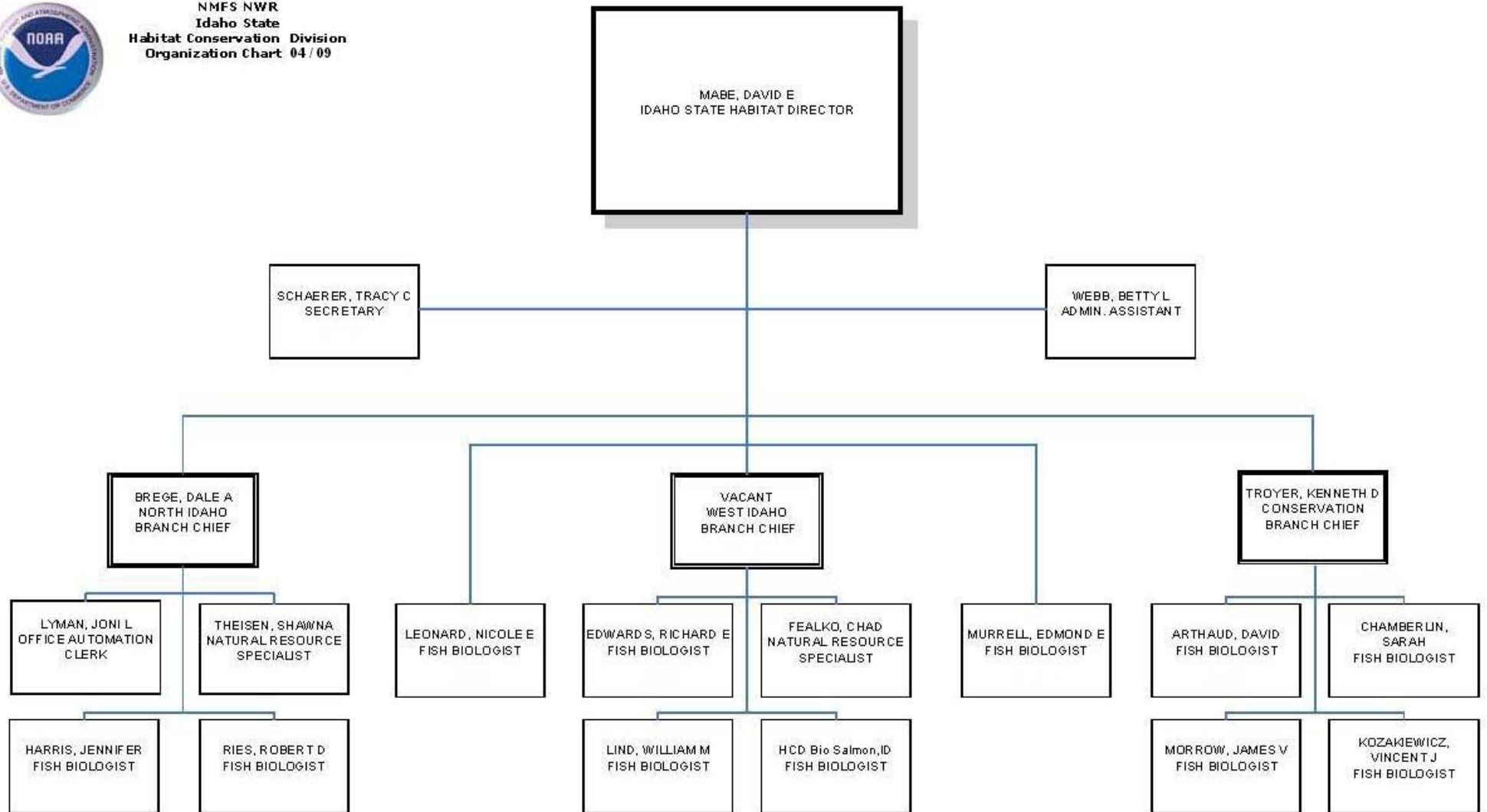


NMFS NWR
Office of Management Information
Organization Chart 04 / 09



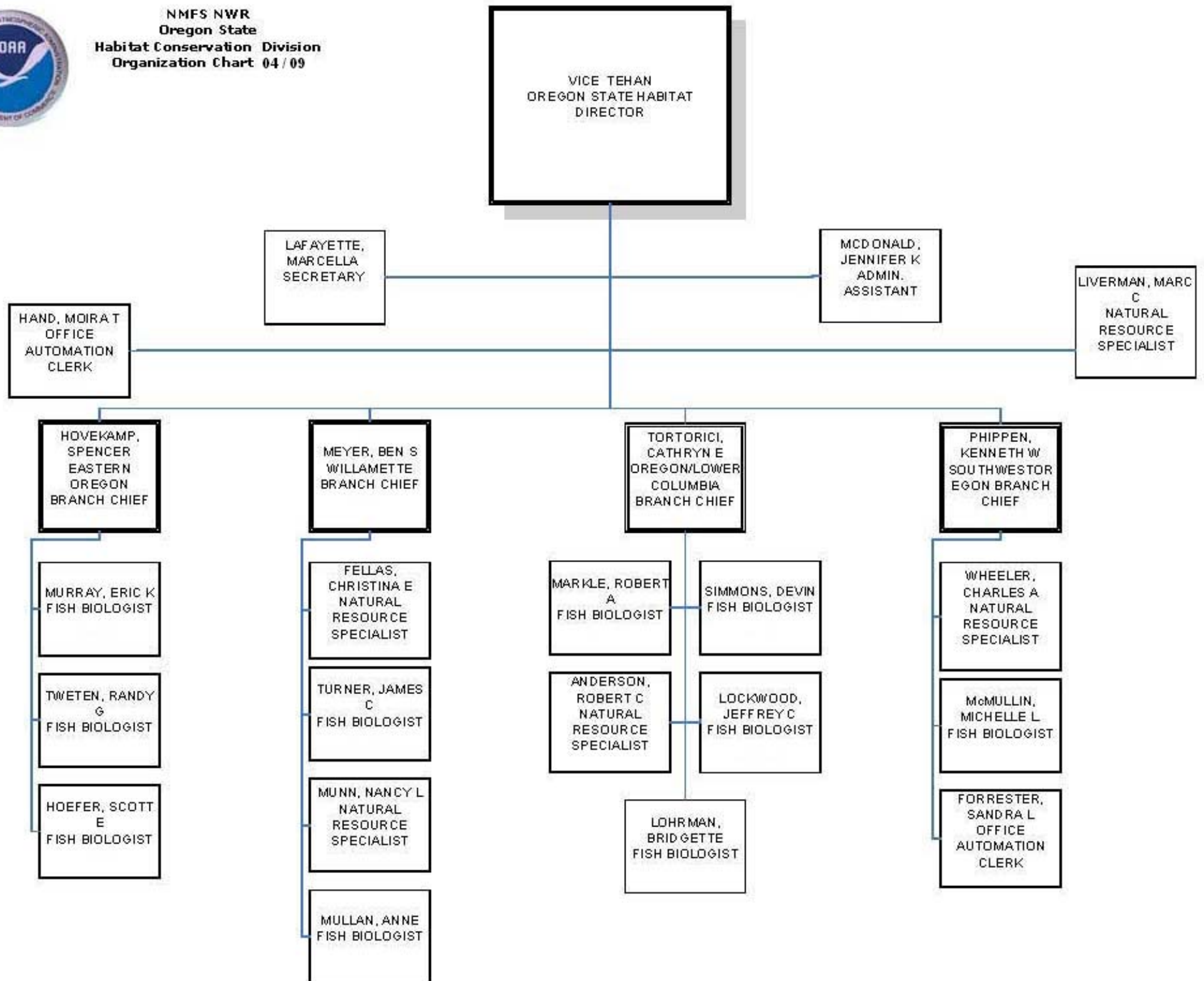


NMFS NWR
Idaho State
Habitat Conservation Division
Organization Chart 04/09



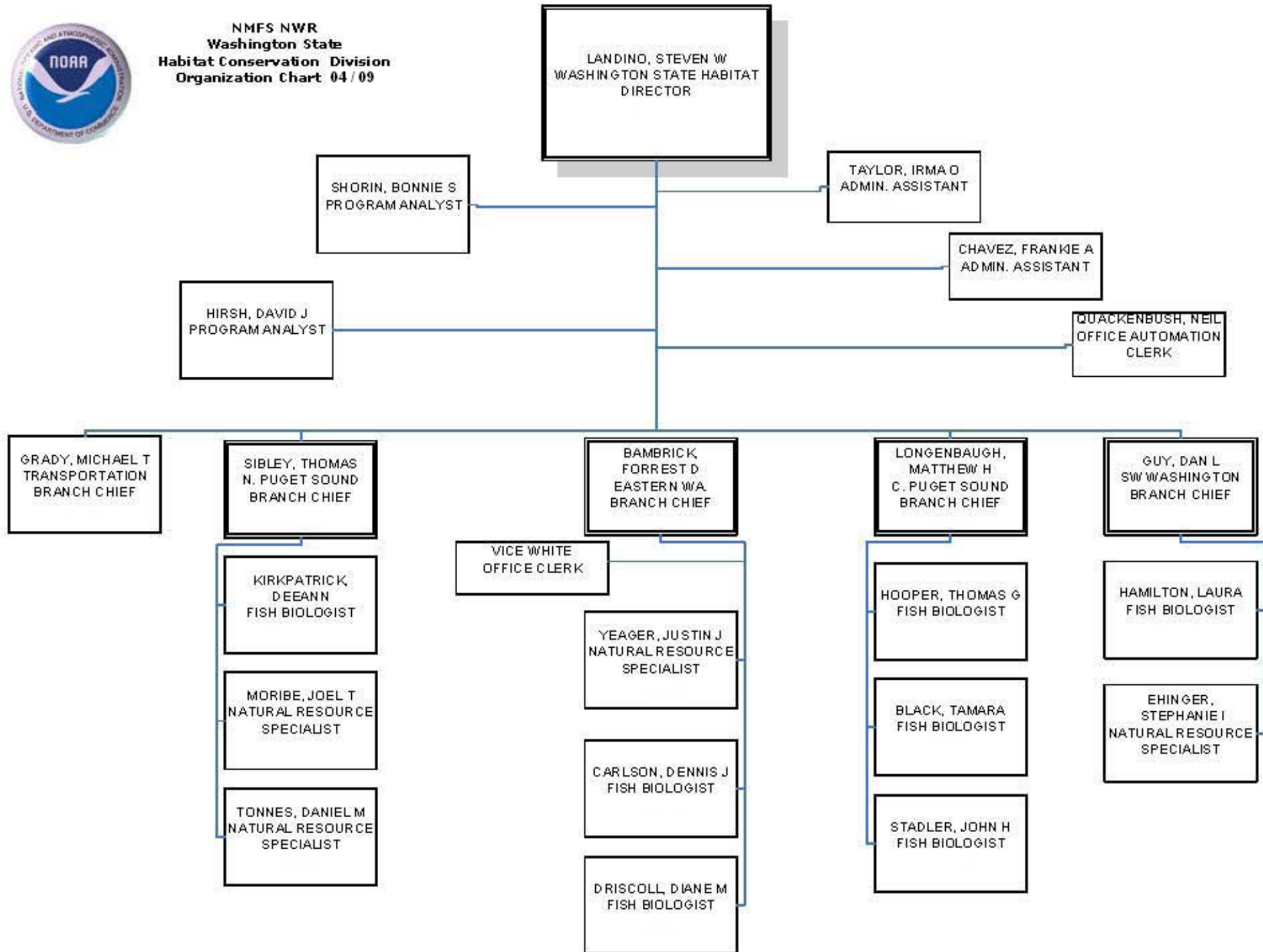


NMFS NWR
Oregon State
Habitat Conservation Division
Organization Chart 04/09





NMFS NWR
Washington State
Habitat Conservation Division
Organization Chart 04 / 09





NMFS NWR
Habitat Conservation Division
Organization Chart 04/09

TEHAN, MICHAEL P
ASSISTANT REGIONAL ADMINISTRATOR

LAFAYETTE, MARCELLA
SECRETARY

KRATZ, KIM W
FISH BIOLOGIST

VICE TEHAN
OREGON STATE HABITAT
DIRECTOR

MABE, DAVID E
IDAHO STATE HABITAT
DIRECTOR

LANDINO, STEVEN W
WASHINGTON STATE HABITAT
DIRECTOR

MEYER, BEN S
WILLAMETTE BRANCH
CHIEF

HOVEKAMP, SPENCER
EASTERN OREGON
BRANCH CHIEF

BREGE, DALE A
NORTH IDAHO
BRANCH CHIEF

TROYER, KENNETH D
WEST IDAHO BRANCH
CHIEF

BAMBRICK,
FORREST D
EASTERN WA. BRANCH
CHIEF

GUY, DAN L
SW WASHINGTON
BRANCH CHIEF

TORTORICI, CATHRYN
E
OREGON/LOWER
COLUMBIA BRANCH
CHIEF

PHIPPEN, KENNETH W
SOUTHWEST OREGON
BRANCH CHIEF

LONGENBAUGH,
MATTHEW H
C. PUGET SOUND
BRANCH CHIEF

SIBLEY, THOMAS
N. PUGET SOUND
BRANCH CHIEF