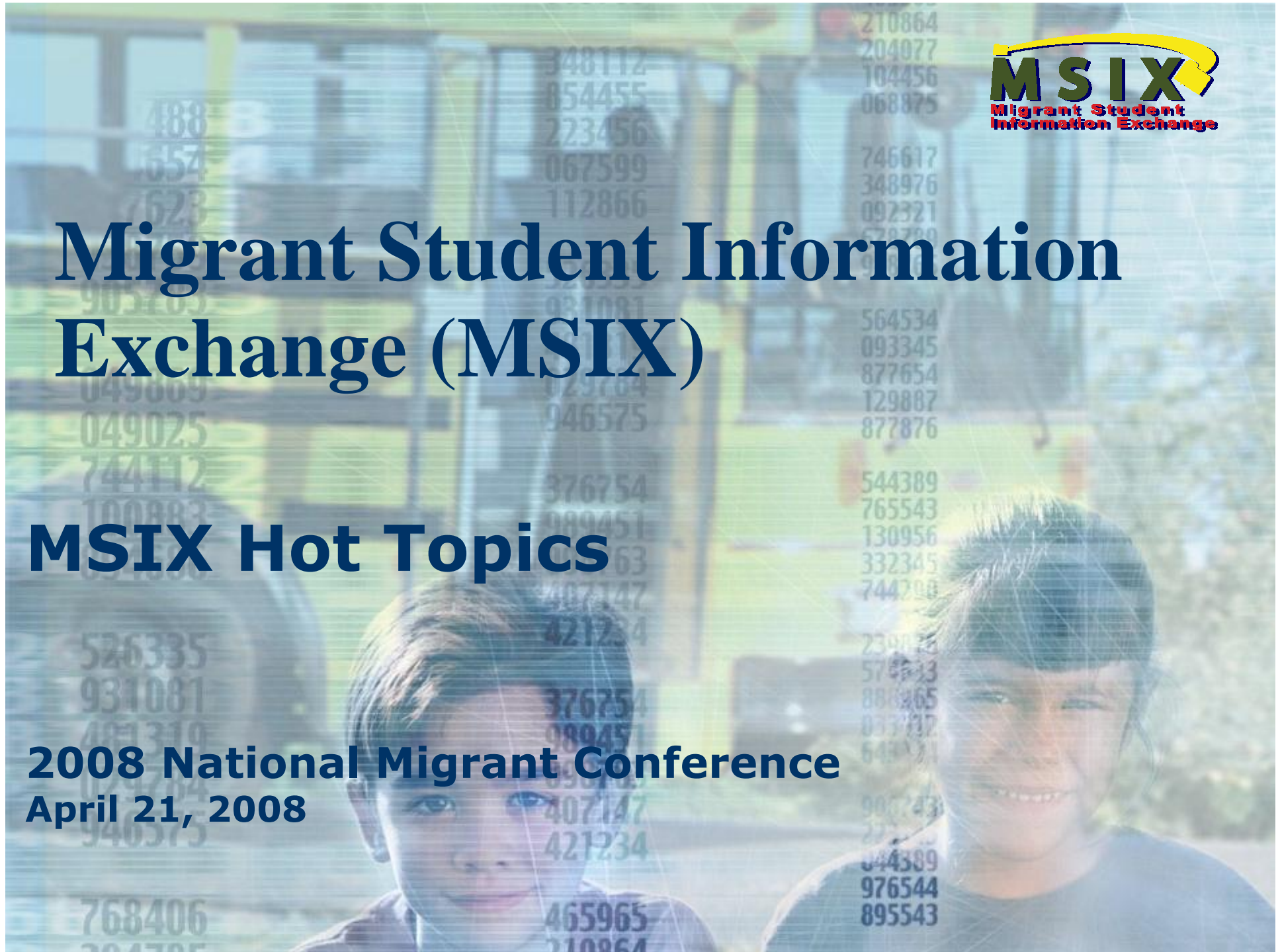




Migrant Student Information Exchange (MSIX)

MSIX Hot Topics

2008 National Migrant Conference
April 21, 2008





Agenda

- Welcome and Introductions *Jennifer Dozier*
- Data Ingestion Status Update *Keith Scott*
- MSIX Interfaces – SSH FTP and SSL FTP *Charlie Inman*
- Interconnection Agreements and FERPA *Jennifer Dozier*
- MSIX Data Quality Grants *Alejandra Velez-Paschke*
- MSIX & ED*Facts* *Charlie Inman*
- MSIX Training Environment *John Carden*
- Potential Future MSIX Enhancements *John Carden, Charlie Inman*
- Questions & Answers

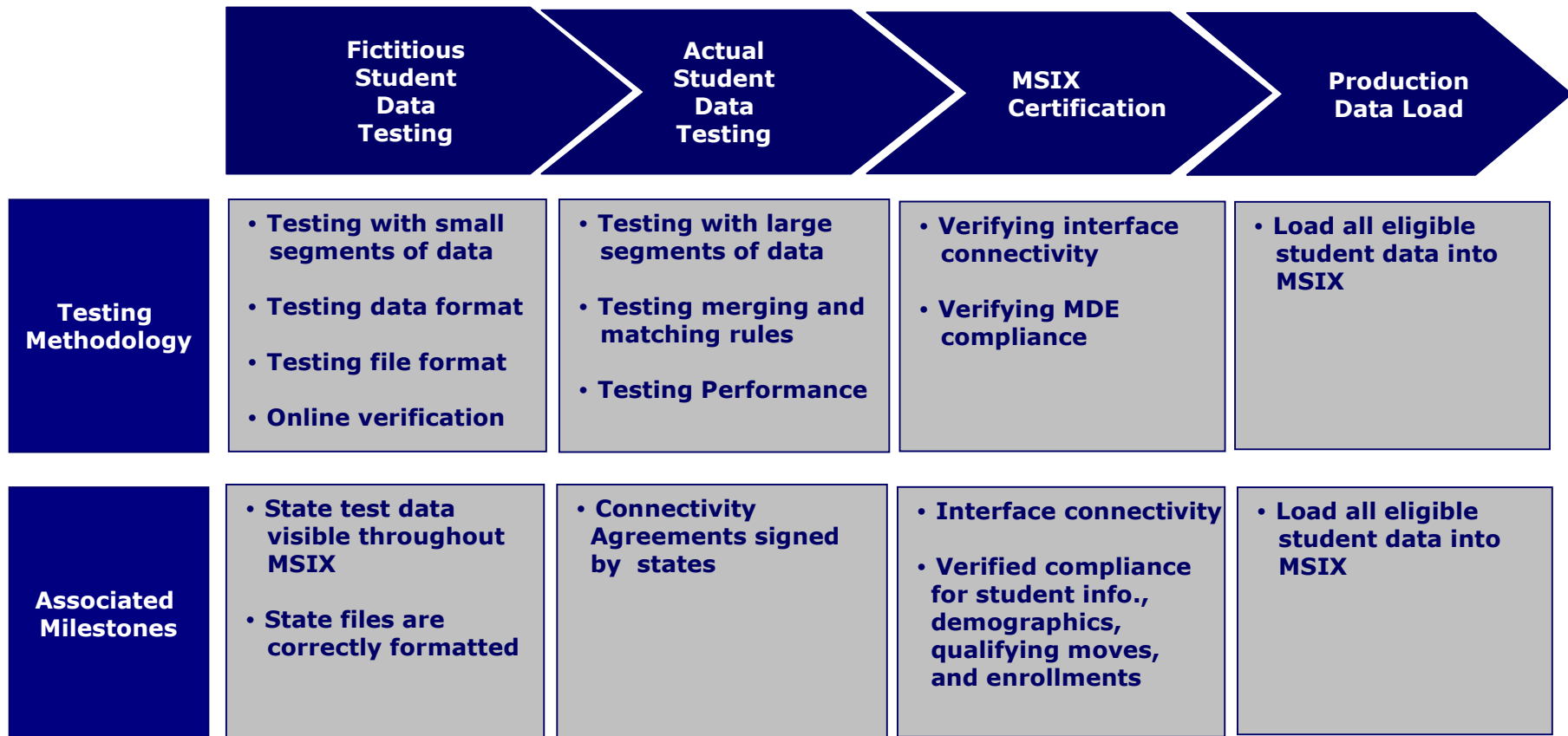
MSIX Data Ingestion Status Update

Keith Scott



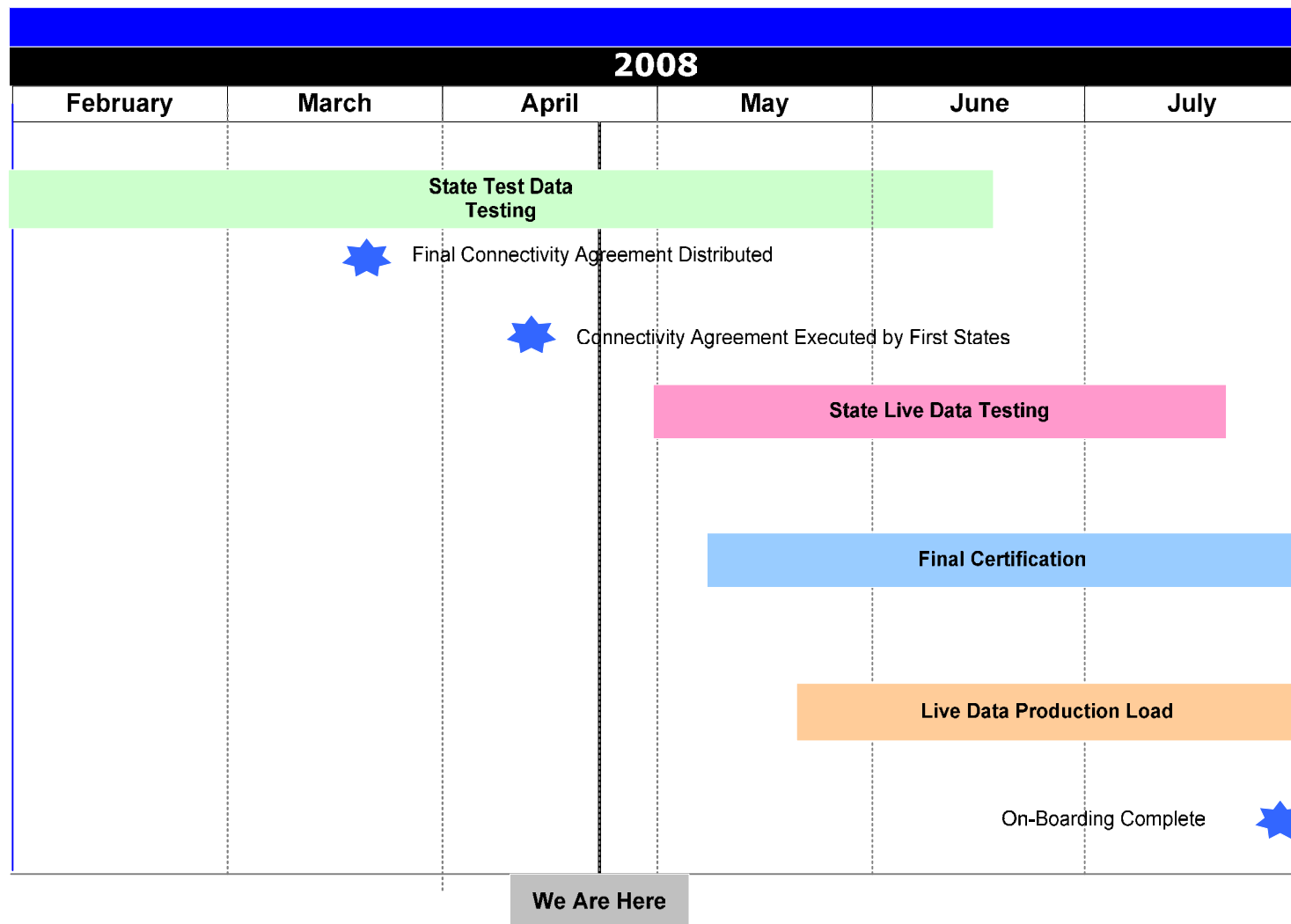


Data Ingestion Phases



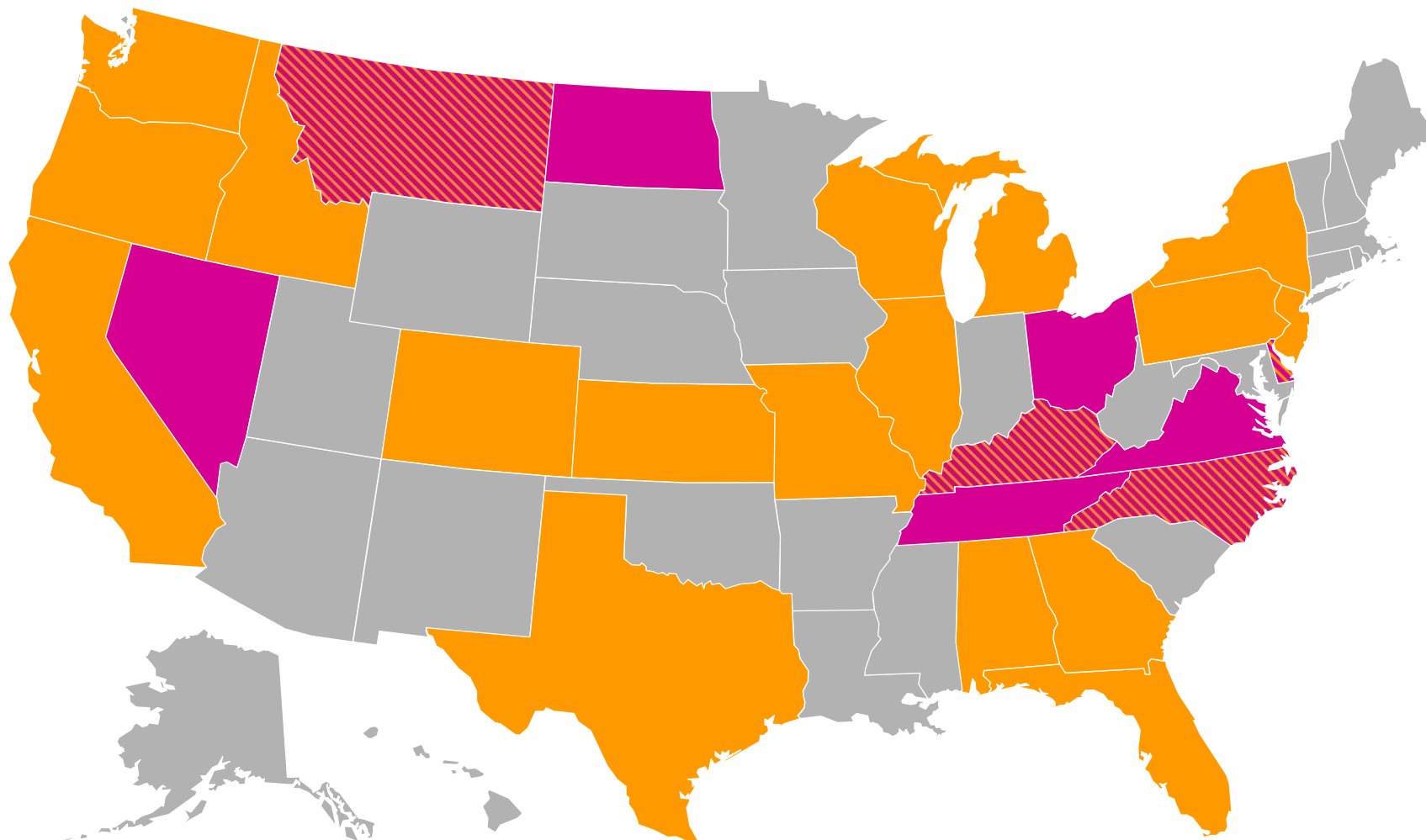


Data Ingestion – Overall Schedule





Current Interface Testing Status



Key:



Testing Not Started



Testing In Progress



Interconnectivity Agreements Signed



Eligible for Live Data Testing



Data Ingestion Phases – Next Steps

- The MSIX Team to continue working with chosen vendors and state IT teams to complete MSIX Interface development
- States to continue reviewing and signing the Interconnection Agreements
- The MSIX Team and states to continue the MSIX Interface testing process by exchanging data files and test results
- The MSIX Team to certify each state's MSIX Interface
- States and MSIX Team to load Live data into MSIX for states with Certified Interfaces

MSIX Interfaces

SSH FTP and FTP SSLx

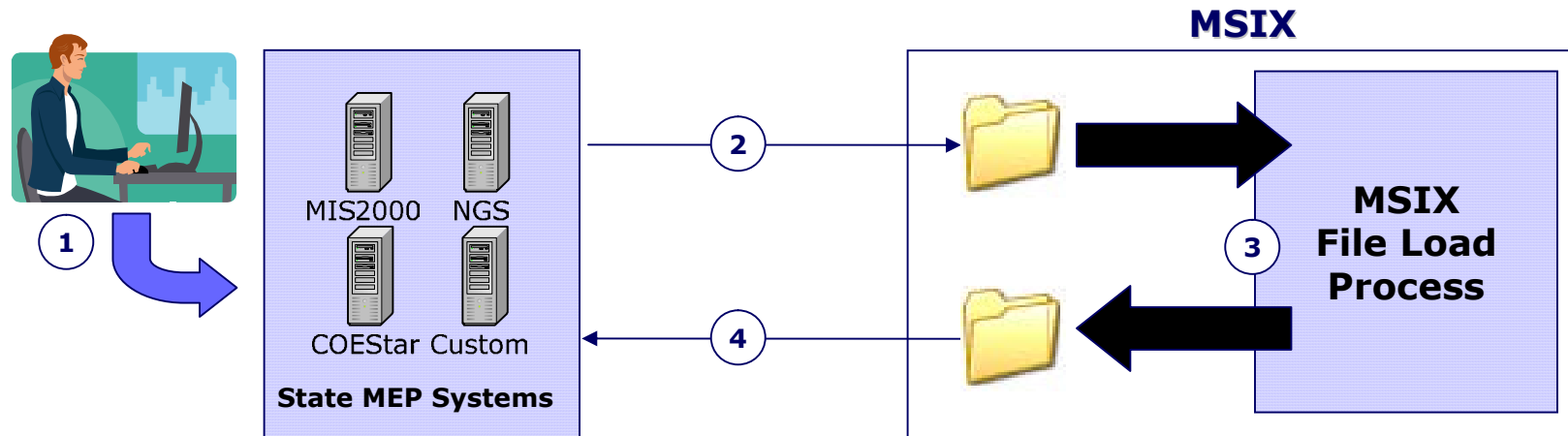
Charlie Inman





MSIX-to-State Interface

MSIX-to-State Interface Overview

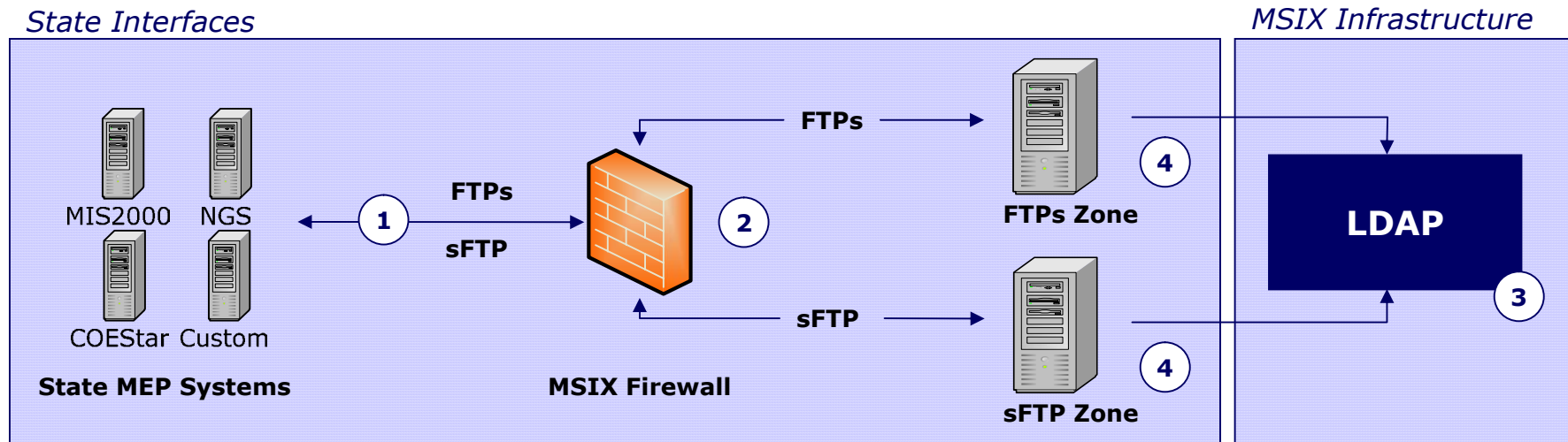


- 1 User creates/updates student record in their State's MEP system
- 2 State MEP system transmits student data into corresponding folder on MSIX FTP server
- 3 MSIX processes file, loads State data into MSIX, and places results file into outbound directory
- 4 State MEP system retrieves results file from MSIX FTP server and processes results in MEP system



MSIX-to-State Interface Security Architecture

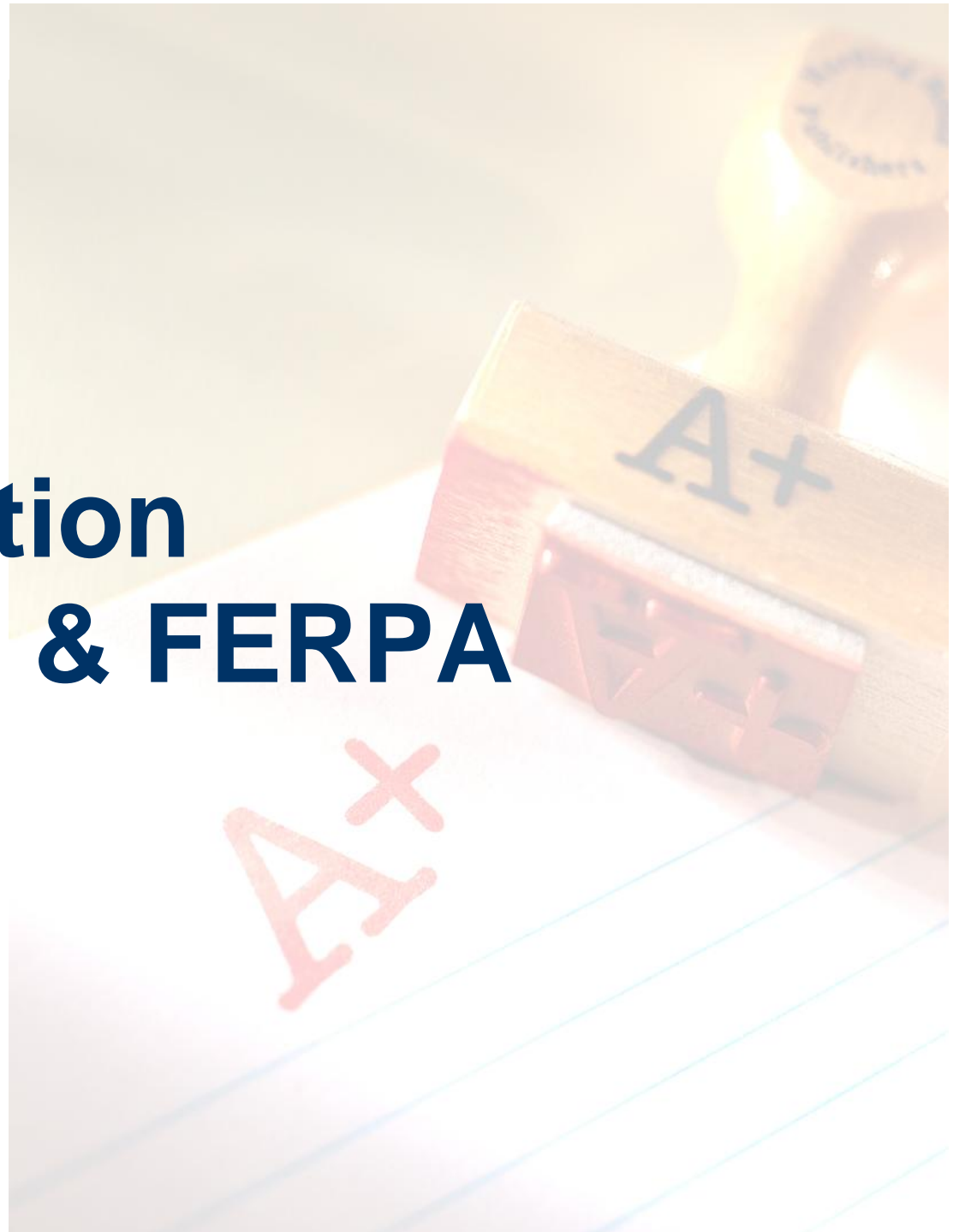
High Level MSIX Security Architecture



- ① MSIX uses FIPS 140-2 compliant FTP protocols to provide encrypted communication with State systems
 - FTP over Secure Socket Layer (SSL) → **FTPs**
 - Secure Shell (SSH) FTP → **sFTP**
- ② MSIX firewall provides rules to restrict access to specific IP addresses and to route traffic based on protocol
- ③ FTP protocols use the MSIX LDAP to identify and authenticate users
- ④ MSIX restricts users to their account's home directory on MSIX FTP servers

Interconnection Agreements & FERPA

Jennifer Dozier





Interconnection Agreements (IA)

- Explains that there are risks to interconnecting information systems
- IA required by OMB Circular A-130
- Parties acknowledge their responsibilities for planning, establishing, maintaining, and disconnecting the interconnection
- Explains the safeguards the SEA should take to protect MSIX data and ensure its proper use
- Must be signed by States before MSIX can accept live data from them



Interconnection Security Agreements (ISA)

- Documents the technical requirements for connecting the systems
- Documents the use and purposes of the data
- Reiterates adherence to the MSIX Rules of Behavior
- Documents responsibilities for reporting security incidents
- Documents responsibilities for monitoring audit trail logs
- Describes the inbound and outbound file transmission processes



IA Questions and Feedback from States

- Eliminate SEAs assumption of risk for ensuring LEAs and LOAs are “in compliance with” the provisions in the interconnection agreement
- Eliminate SEAs assumption of risk for MSIX data extraction at the LEA or LOA level
- Eliminate any incorporation by reference of future MSIX regulations
- ED will soon provide an updated IA to all States that addresses these concerns
- States that have already signed IAs will be asked to sign a new agreement or an addendum to the existing one

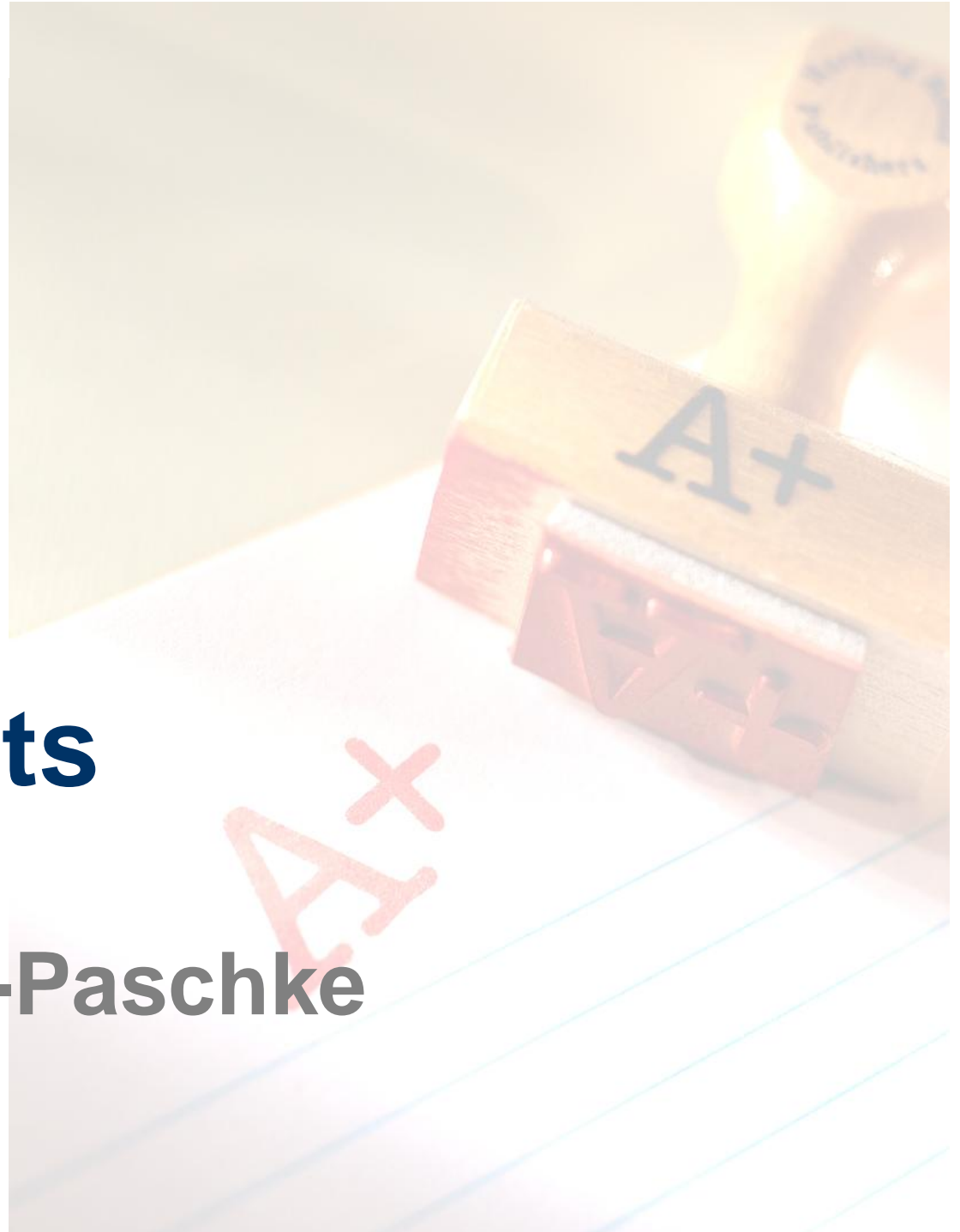


MSIX and FERPA

- Joint letter sent out by directors of the Office of Migrant Education (OME) and the Family Policy and Compliance Office (FPCO) on April 2, 2008
- ED has determined that FERPA permits without parental consent:
 - LEAs and LOAs to provide the minimum data elements (MDE) to their respective SEAs or State migrant student data system
 - SEAs or State migrant student data systems may redisclose this information to MSIX
 - MSIX may be used to exchange MDE on migrant students among SEAs, LEAs, and/or LOAs on an interstate or intrastate basis
- Memo available on the MSIX website

MSIX Data Quality Grants

Alejandra Valez-Paschke





MSIX State Data Quality Grants

- Program subject to public comment (due May 1), as well as internal Departmental comments
- Annual distribution of funds to States receiving MEP Basic State formula grants to assist them in their participation with MSIX (est. \$2M for FY08; other sums in subsequent years)
- Proposed formula would allocate funds with a fixed base amount and then an additional amount proportional to MEP Basic State formula grant – but no State would get more than 20% of MEP Basic State formula grant
- Proposed disbursement to States in mid-September
- Simple application process

MSIX & EDFacts

Charlie Inman





What is EDFacts?

- EDFacts is a “U.S. Department of Education (ED) initiative to put performance data at the center of policy, management and budget decisions for all K-12 educational programs.”
- EDFacts uses the Education Data Exchange Network (EDEN) as its source for educational data
 - A centralized portal that allows State Educational Agencies (SEAs) to submit District, School and other educational data to ED
 - Administered and maintained by ED
- Each State has a technical EDFacts coordinator/lead
 - Responsible for submitting data to EDFacts/EDEN
 - Maintains data on an ongoing basis
- For information on EDFacts and EDEN:
<http://www.ed.gov/about/inits/ed/edfacts/index.html>



EDFacts provides MSIX educational reference data

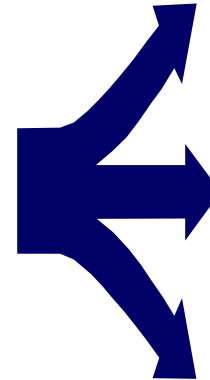
- EDFacts provides MSIX with its School and Local Educational Authority (LEA) reference data
 - Provides for a cleaner, more standardized set of data in MSIX records
 - Reduces the burden on States to submit information to multiple sources
- EDFacts data is read-only in MSIX
 - States work through EDFacts coordinator to resolve discrepancies and resubmit to EDFacts
 - MSIX will receive updates in the next appropriate EDFacts extract



LEA (District) & School/Project data from EDFacts

LEA (District)	FIPS State Code
	Education Entity Name
	LEA Identifier (State District ID)
	LEA Identifier (NCES District ID)
	Location Address
	Mailing Address
	Telephone
	Status

School/Project	FIPS State Code
	Education Entity Name
	LEA Identifier (State District ID)
	LEA Identifier (NCES District ID)
	School/Project NCES ID
	Location Address
	Telephone
	Status



MSIX Uses EDFacts data to:

- Validate State student enrollment records during file processing
- Support the MSIX Regional Infrastructure that links Districts in a State
- Support specific user roles (e.g., District Data Administrator)



EDFacts provides quarterly data updates

Quarter/ Extract	Approximate Timeframe	Description
1 st	November	Initial extract for the current school year Updates to previous school years (closed facilities, address changes)
2 nd	February	Updates to current school year data Other updates to previous school years
3 rd	May	Updates to current school year data Other updates to previous school years
4 th	August	Final clean version of current school year data*

* EDFacts school/project data is usually one school year behind

- MSIX accounts for school year during file processing and validation
 - Current school year records are flagged as *not-validated*
 - Other school year records are flagged as *invalid*
- MSIX runs an annual automated cleanup process once the final extract is received to validate all *not-validated* records
- MSIX Technical Lead and the EDFacts Technical Lead should work together to resolve discrepancies

MSIX Training Environment

John Carden





MSIX Training Environment - Overview

- MSIX Training Environment available starting in May for use by State Training teams
- Environment for exclusive use during 2-day reservation periods
- Data and materials available to support Training events similar to the MSIX Train-the-Trainer Conferences
- Training Environment Guide available in the Trainers' Corner
- Contact the MSIX Help Desk for MSIX Training Environment Reservation requests
- Follow-up meetings with the MSIX Team will be scheduled to discuss more detailed information



MSIX Training Environment Training Materials

- Hands-on Exercises *(with supporting data)*
 - Introduction & Navigation
 - Primary User *(Student Search, Move Notifications)*
 - User Administrator *(Create User, Search & Modify User)*
 - Region Administrator *(Enable & Create Regions, Modify Region)*
- Instructor-led Demonstrations *(with supporting data)*
 - Data Administrator *(Near Match Resolution, Merge, Split)*
- Conference Presentation
- Pop Quiz
- Treasure Hunt
- Online Training Modules



MSIX Training Environment Supporting Materials

- Sign-in Sheets
- Name Tents
- Course Completion Certificate
- Evaluation Forms
- Evaluation Report
- Trainers' Corner Materials



Potential Future MSIX Enhancements

John Carden
Charlie Inman



Potential Future MSIX Enhancements (1 of 3)

Student Transcripts

Description: Format current MSIX student data into a single consolidated student “transcript”

Considerations:

- Would this be useful to users?
- Could this replace need to “official” state/school transcripts?



Potential Future MSIX Enhancements (2 of 3)

Spanish Translations

Description: Provide Spanish labels to identify the MSIX data elements.

Considerations:

- Who would be the potential audience? – MEP personnel, school staff, parents, students, others?
- What would be the best format to access the information? – Online MSIX application, reports, other?



Potential Future MSIX Enhancements (3 of 3)

Automated Student Move Notifications

Description: MSIX would automatically notify states with open enrollments for a student when a new enrollment is received from another state for that student. States would use this notice to submit final records for student or initiate split if student is still in-state

Considerations:

- Would this be helpful?
- Other considerations?

**Questions, Ideas, or
Suggestions?**

