

# U.S. Natural Gas Imports and Exports –1999

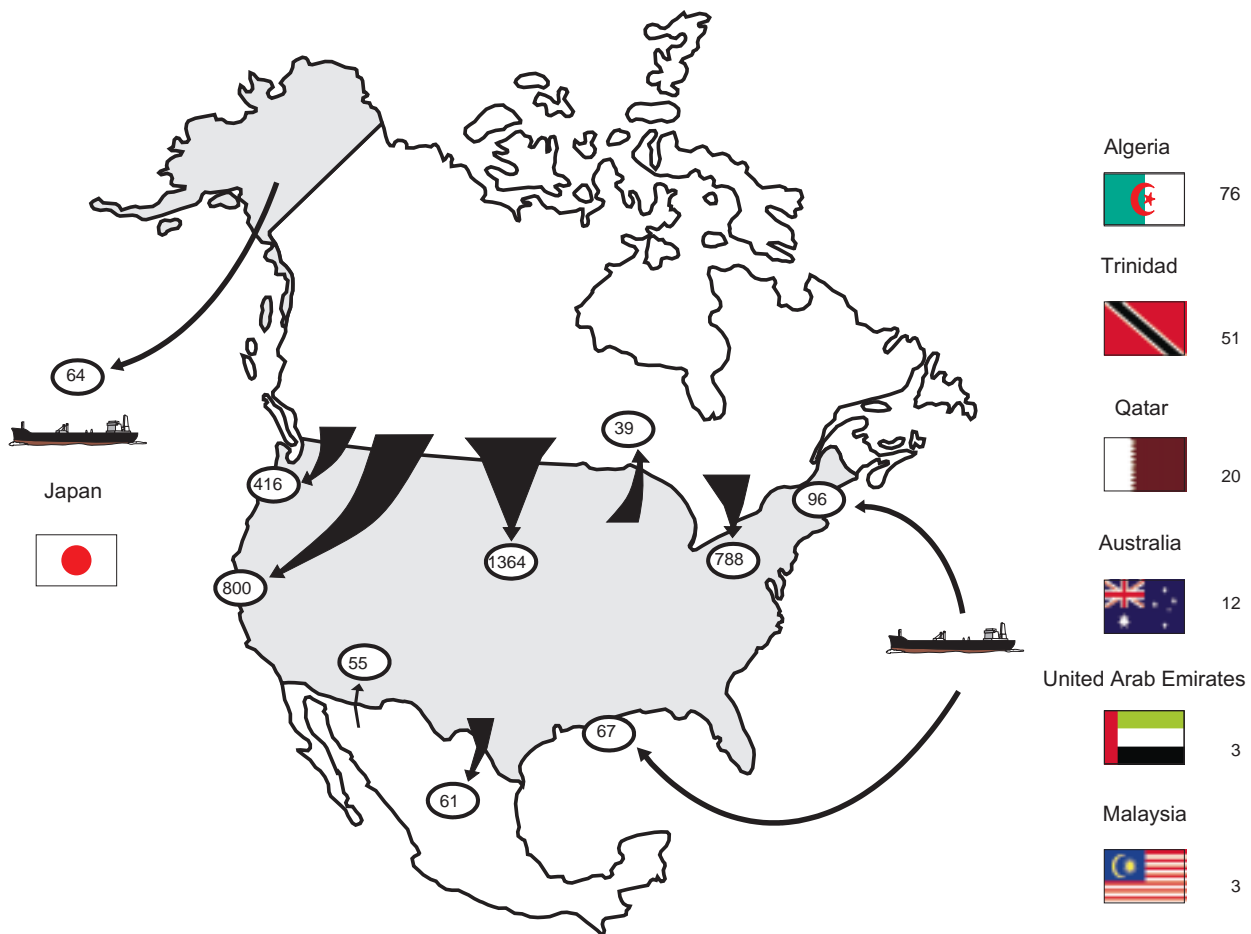
By Ann M. Ducca and Donna R. Guerrina

The United States continued active trading in natural gas imports and exports during 1999. For the thirteenth year in a row, net imports reached a new record level of 3.4 trillion cubic feet and increased their contribution to U.S. gas supplies. Pipeline imports from Canada were the source of most imports. Reflecting the brisk trade in the international liquefied natural gas (LNG) market, U.S. LNG imports nearly doubled compared with their 1998 level.

Some highlights of U. S. natural gas imports and exports for 1999 are:

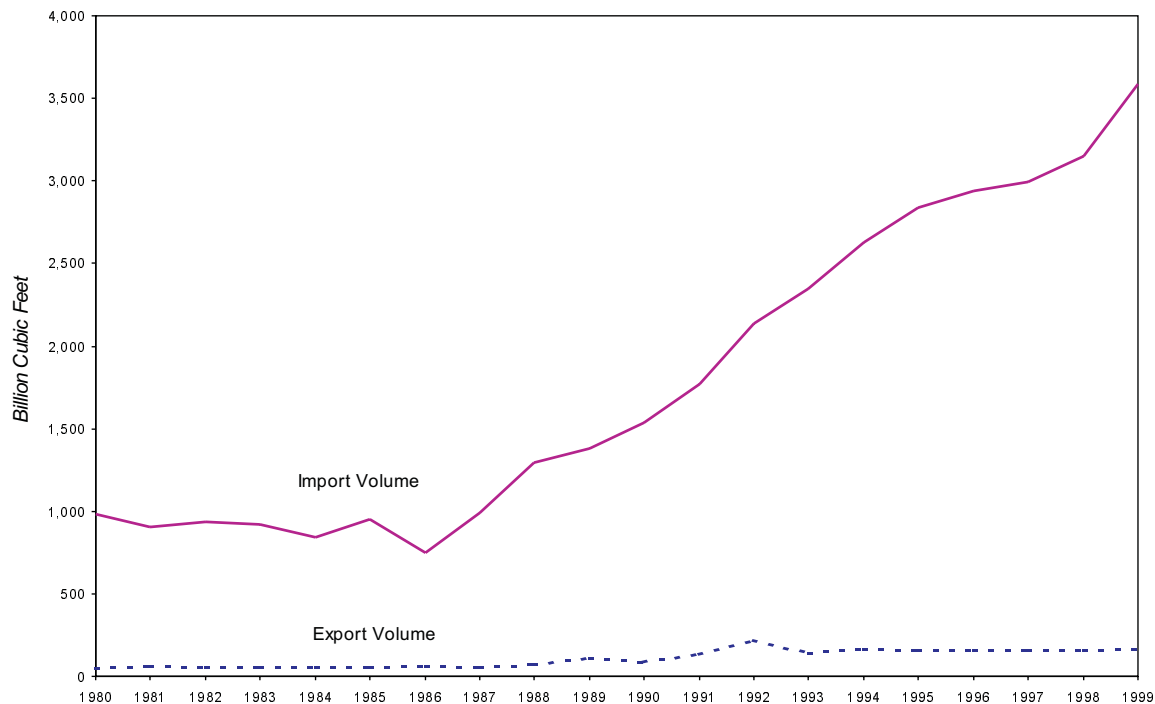
- Net imports expanded their share of total U.S. consumption, reaching 16 percent in 1999.
- Natural gas imports from Canada reached a record 3.4 trillion cubic feet, 10 percent more than in 1998.

Figure SR1. Flow of U.S. Natural Gas Imports and Exports, 1999  
(Billion Cubic Feet)



Source: Office of Fossil Energy, U.S. Department of Energy, *Natural Gas Imports and Exports*.

**Figure SR2. Total U.S. Natural Gas Imports and Exports, 1980-1999**



Sources: 1994 and Earlier Years: Energy Information Administration, Form FPC-14, "Annual Report for Importers and Exporters of Natural Gas." 1995 to 1999: Office of Fossil Energy, U.S. Department of Energy, *Natural Gas Imports and Exports*.

- The price of Canadian imports increased to \$2.23 per thousand cubic feet, 14 percent above the 1998 price. As in recent years, the Canadian price followed the upward trend in U.S. wellhead prices.
- The United States imported LNG from Trinidad and Tobago, Qatar, and Malaysia for the first time.

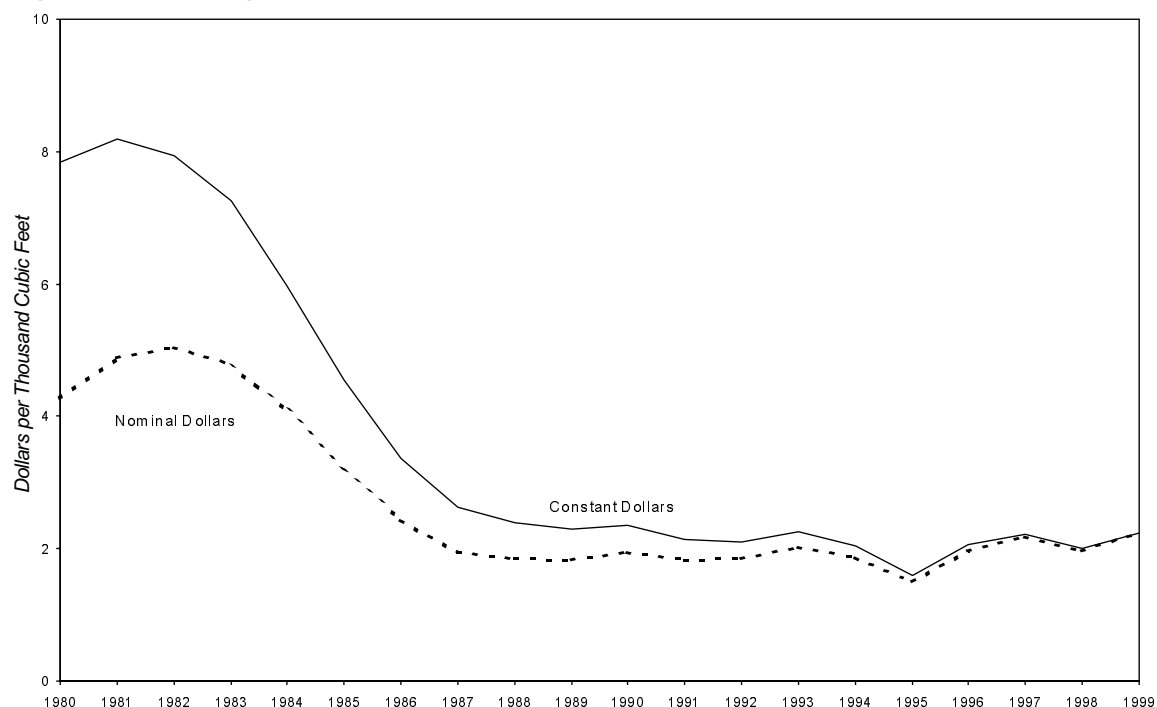
## Trade with Canada

Natural gas imports from Canada continued their upward trend, reaching 3.4 trillion cubic feet, 10 percent more than in 1998. They comprised 95 percent of total U.S. imports in 1999. The price of Canadian imports also increased to \$2.23 per thousand cubic feet, 14 percent above the 1998 price of \$1.95 per thousand cubic feet. As in recent years, the Canadian price followed the upward trend in U.S. wellhead prices. The U.S. wellhead price also rose from 1998 to 1999, although by a smaller percentage. The 1999 wellhead price

was \$2.08 per thousand cubic feet, 7 percent higher than in the previous year.

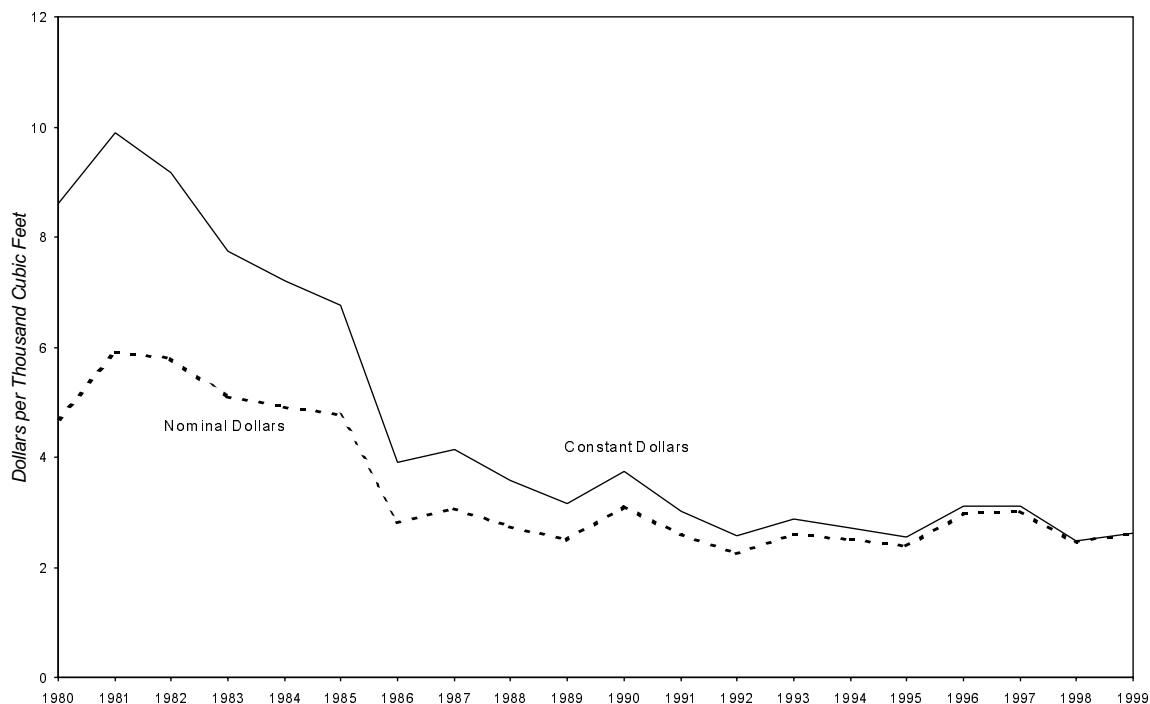
The growth rate in Canadian imports was 10 percent in 1999 compared with a 5 percent rise in 1998, 1 percent in 1997, and 2 percent in 1996. The higher growth rate was due to significant increases in crossborder capacity as two pipeline projects completed in late 1998 and operational throughout 1999 made import expansion possible. The Great Lakes Transmission expansion project added 126 million cubic feet per day of capacity. It extends from Manitoba, Canada through Noyes, Minnesota. The Northern Border Iowa-to-Illinois expansion project increased capacity from Port of Morgan, Montana, into Iowa by 700 million cubic feet per day and extended into Illinois just south of Chicago. A third project, the Portland Pipeline project, began operations in March 1999. It added a new pipeline to bring natural gas from western Canada into the U.S. Northeast through New Hampshire. Included in this project was the conversion back to oil use of the old Portland

**Figure SR3. Average Price of U.S. Natural Gas Imports, 1980-1999**



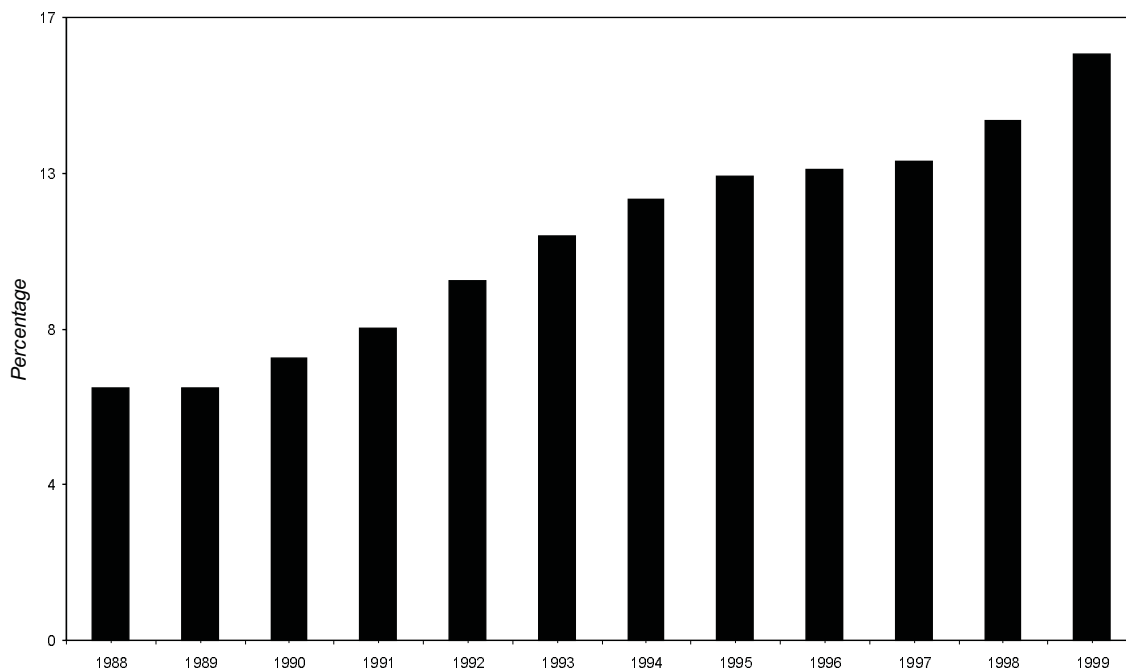
Sources: Nominal Dollars: 1994 and Earlier Years: Energy Information Administration, Form FPC-14, "Annual Report for Importers and Exporters of Natural Gas." 1995 to 1999: Office of Fossil Energy, *Natural Gas Imports and Exports*. Constant Dollars: Prices were converted to 1999 dollars using the chain-type price indexes for Gross Domestic product (1996 = 1.0) as published by the U.S. Department of Commerce, Bureau of Economic Analysis.

**Figure SR4. Average Price of U.S. Natural Gas Exports, 1980-1999**



Sources: Nominal Dollars: 1994 and Earlier Years: Energy Information Administration, Form FPC-14, "Annual Report for Importers and Exporters of Natural Gas." 1995 to 1999: Office of Fossil Energy, *Natural Gas Imports and Exports*. Constant Dollars: Prices were converted to 1999 dollars using the chain-type price indexes for Gross Domestic product (1996 = 1.0) as published by the U.S. Department of Commerce, Bureau of Economic Analysis.

**Figure SR5. U.S. Net Imports as a Percentage of Total Consumption, 1988-1999**



Sources: 1994 and Earlier Years: Energy Information Administration, Form FPC-14, "Annual Report for Importers and Exporters of Natural Gas." 1995 to 1999: Office of Fossil Energy, U.S. Department of Energy, *Natural Gas Imports and Exports*.

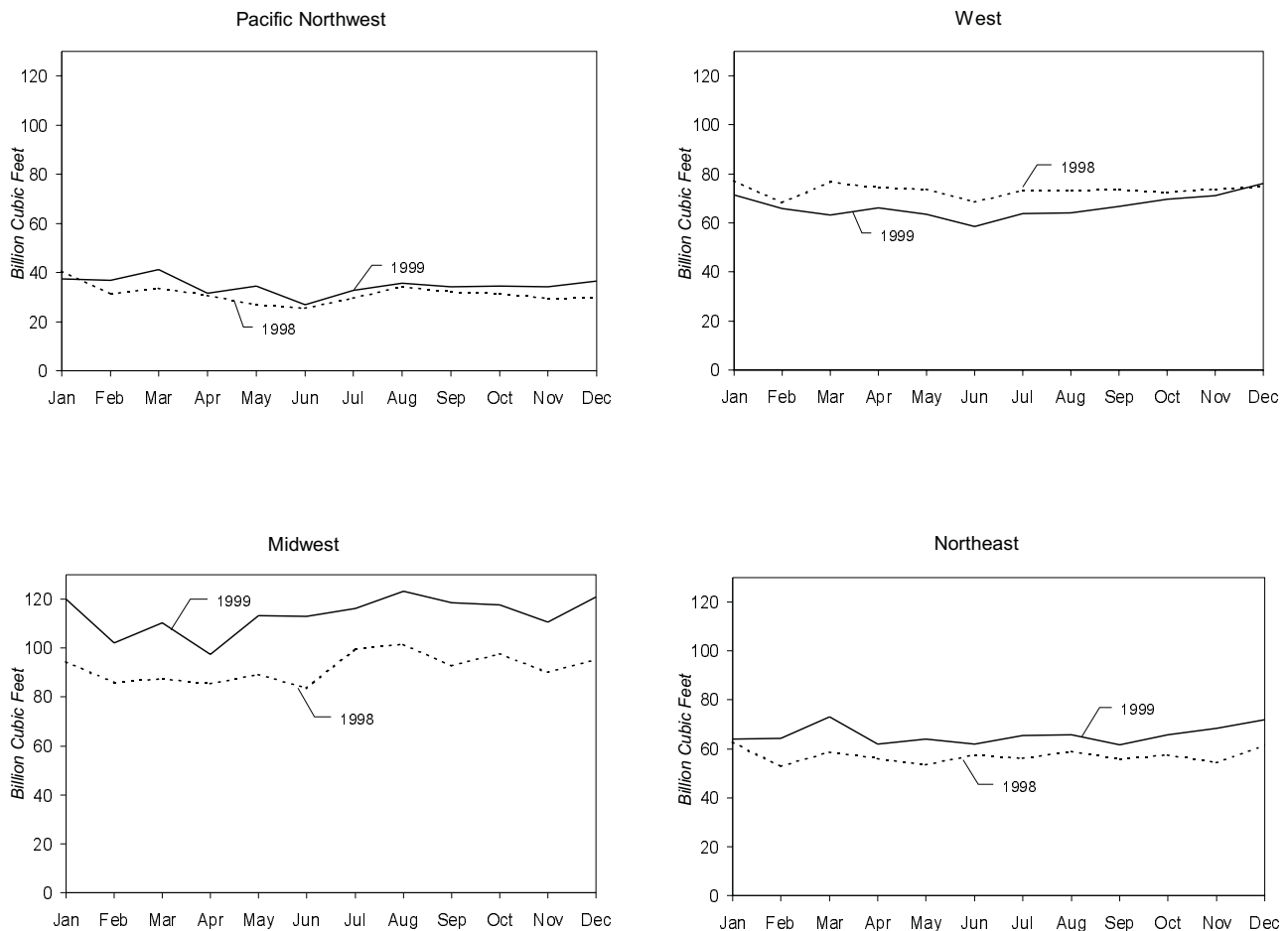
Pipeline, which crosses the Canadian border into Vermont. The project has created a net increase of 147 billion cubic feet per day of capacity serving Northeast markets.

U.S./Canadian crossborder capacity expansion has continued in 2000 with the startup of two major U.S./Canadian pipeline projects. The Maritimes and Northeast Pipeline was completed in 1999 and gas began flowing in January 2000. It established a link between the Sable Island Offshore Energy Project (SOEP) and New England markets. The SOEP, located off Nova Scotia in the northern Atlantic, marks the first commercial natural gas project in the Atlantic off North America. The SOEP is designed to supply about 530 million cubic feet per day to the Maritimes and Northeast Pipeline which will deliver about 400 million cubic feet per day to New England markets. The Alliance Pipeline, with a capacity of 1.3 billion cubic feet per day, is scheduled to begin operations in late October 2000. It will cross the Canadian border

into North Dakota and serve Chicago area markets.

There are 21 principal entry points for Canadian gas imports into the United States which are grouped in this report into four regional areas: the Pacific Northwest, the West, the Midwest, and the Northeast. Imports into all of the regional areas, except the West, rose from 1998 to 1999. The Midwest had the greatest share of 1999 imports, 1,364 billion cubic feet, and showed the largest increase, 24 percent, over 1998 levels. Most of the increase occurred at Port of Morgan, Montana, where imports reached 790 billion cubic feet in 1999, 42 percent more than in the previous year, because of the Northern Border Iowa-to-Illinois expansion project. Imports into the Northeast also rose from 1998 to 1999, by 15 percent, to 788 billion cubic feet. In the Pacific Northwest, imports reached 416 billion cubic feet in 1999, 11 percent higher than in 1998, while they declined by 9 percent in the West to 800 billion

**Figure SR6. U.S. Natural Gas Pipeline Imports from Canada by Regional Point of Entry, 1998-1999**



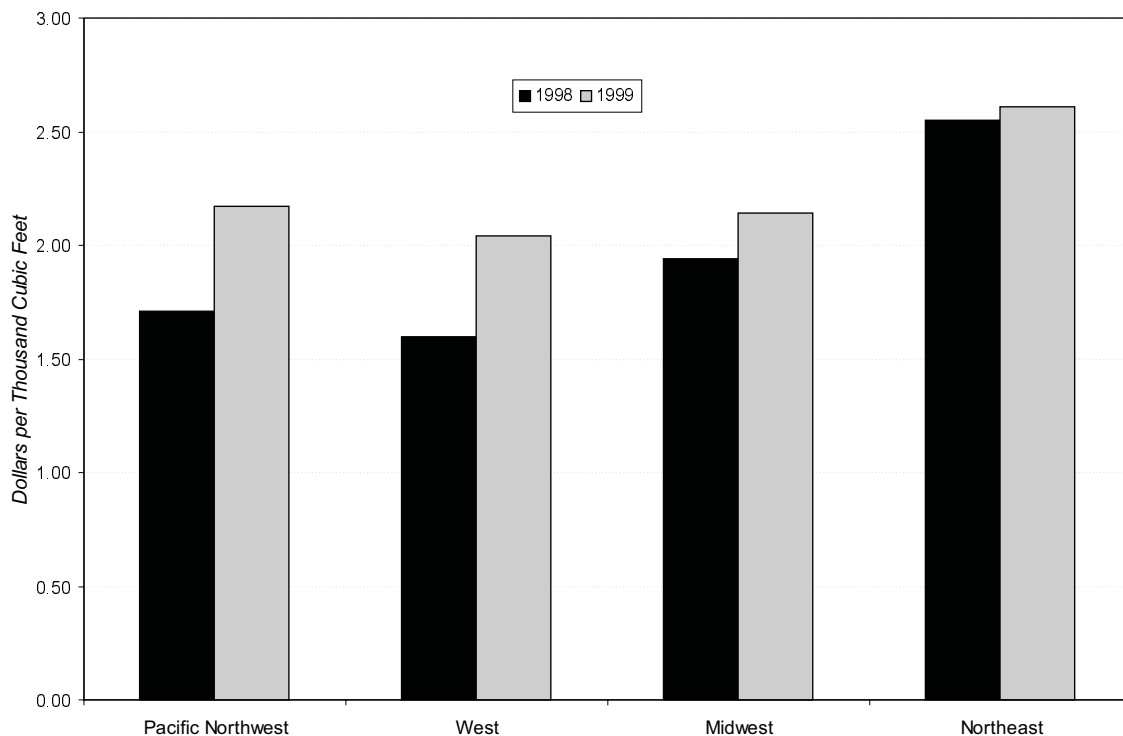
cubic feet. Most imports entering the United States in the West region are marketed in California.

Prices rose in all regional areas. The Northeast region, located at the greatest distance from supply sources, paid the highest price for natural gas in 1999, \$2.61 per thousand cubic feet, but showed the lowest percentage increase over 1998, 2 percent. The price in the Midwest was \$2.14 per thousand cubic feet, 10 percent more than in 1998, and the price in the Pacific Northwest was \$2.17 per thousand cubic feet, 27 percent higher than the 1998 price. The West

region had the lowest price, \$2.04 per thousand cubic feet, 28 percent greater than in 1998.

Natural gas exports to Canada declined by 3 percent from 1998 to 1999 to 39 billion cubic feet. The principal point of exit was Detroit, Michigan, accounting for 65 percent of the exports to Canada. The average price of exports to Canada was \$2.35 per thousand cubic feet, 4 percent above the 1998 price. Exports to Canada represented 39 percent of total U.S. pipeline exports.

**Figure SR7. Average Price of U.S. Natural Gas Pipeline Imports from Canada by Regional Point of Entry, 1998-1999**



Source: Office of Fossil Energy, U.S. Department of Energy, *Natural Gas Imports and Exports*.

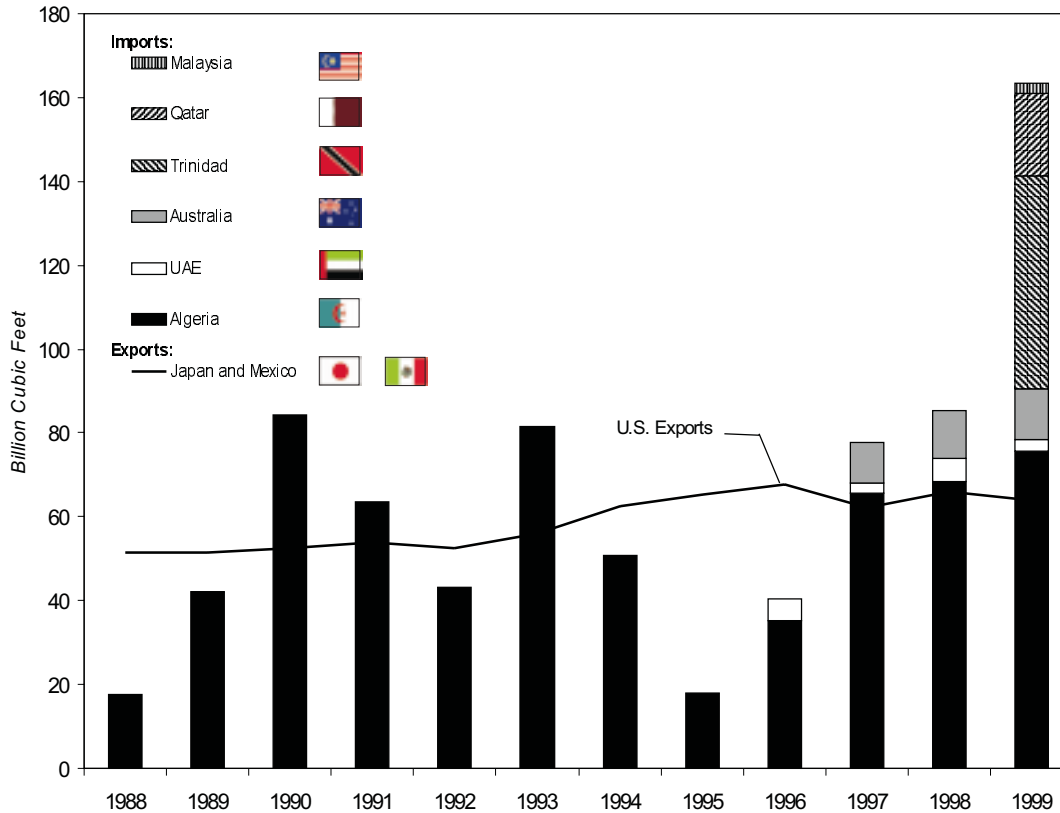
## Trade with Mexico

During 1999, natural gas pipeline exports from the United States to Mexico reached 61 billion cubic feet, the highest level since 1995. The price increased to \$2.27 per thousand cubic feet, 11 percent above the 1998 price. For the second year in a row, the principal point of exit for pipeline exports to Mexico was Clint, Texas. Sixty-nine percent or 42 billion cubic feet of the U.S. pipeline exports to Mexico were shipped on the Samalayuca pipeline through this exit point. The pipeline began operations in December 1997. Most of the exports at Clint are used to fuel the gas-fired Samalayuca power plants. Also in 1999, 275 million cubic feet of liquefied natural gas (LNG) were sent to Mexico by truck, crossing the border at Nogales, Arizona, and San Diego, California. LNG shipments to Mexico began in 1998 when 33 million cubic feet were exported at Nogales.

The United States imported 55 billion cubic feet of natural gas from Mexico by pipeline in 1999, more than three-and-one-half times the 1998 level of 15 billion cubic feet. The price of imports from Mexico was \$2.14 per thousand cubic feet, 5 percent above the 1998 price. The entry point at Hidalgo, Texas, accounted for 77 percent of the imports from Mexico. The new Tennessee pipeline near Alamo, Texas, a bi-directional pipeline, began operations in September 1999. Imports at Alamo exceeded those at Hidalgo during the last quarter of the year and by the end of 1999 accounted for 23 percent of annual imports.

The San Diego Gas and Electric Company has built a new pipeline with the capacity to export 300 million cubic feet per day. It crosses the border at Otay Mesa, southeast of San Diego, and serves various customers in Northern Baja California in Mexico. The new pipeline became operational earlier this year.

**Figure SR8. U.S. Imports and Exports of Liquefied Natural Gas (LNG), 1988-1999**



Sources: 1994 and Earlier Years: Energy Information Administration, Form FPC-14, "Annual Report for Importers and Exporters of Natural Gas." 1995 to 1999: Office of Fossil Energy, U.S. Department of Energy, *Natural Gas Imports and Exports*.

## Liquefied Natural Gas

Liquefied natural gas (LNG) imports nearly doubled in 1999, reaching 163 billion cubic feet, the highest level since 1979. They represented 5 percent of total U.S. imports. Algeria continued to be the major supplier of LNG imports with 76 billion cubic feet or 46 percent of total LNG imports. The United States had new sources of LNG during 1999. The new Trinidad and Tobago liquefaction facility and terminal targets markets in the Northeastern United States, Spain, and Puerto Rico. It began shipments to Everett, Massachusetts in May 1999. These shipments totaled 51 billion cubic feet, 31 percent of all LNG imports. Also in 1999, the United States imported LNG from Qatar and Malaysia for the first time.

There are two operational LNG-receiving terminals in the United States: Everett, Massachusetts, and Lake Charles, Louisiana.

LNG imports serve as supplemental gas supplies in the markets located near these facilities. In 1999, the Everett, Massachusetts, facility received 96 billion cubic feet, more than double its receipts in 1998. The additional imports were possible because this facility had expanded its revaporization capacity. Most of the increase was due to shipments of gas from Trinidad primarily under long-term agreements. Imports into Lake Charles, Louisiana, also rose to 67 billion cubic feet, 57 percent above 1998 levels. Many of the receipts at Lake Charles were spot purchases. Shipments from Algeria were received at both terminals, mostly under long-term agreements.

The United States has two other LNG facilities that are not presently importing. One of them, the Cove Point LNG terminal in southern Maryland, has not received LNG shipments since 1980. It became a peakshaving storage facility in 1995. Cove Point is filing an

application with the Federal Energy Regulatory Commission (FERC) to resume LNG imports and expects to begin receiving shipments in 2002. The other facility, the mothballed Elba Island terminal near Savannah, Georgia, has received clearance from the FERC to go back in service, and expects to reactivate operations in 2002. Elba Island last imported LNG in 1980.

Prices of LNG imports are higher than those for Canadian and Mexican pipeline imports. A number of factors contribute to this difference including the high Btu content for LNG imports compared with North American gas. LNG prices are also influenced by the local markets that they enter. For example, LNG imports into Massachusetts are close to the end-use markets and compete with relatively higher-cost local gas supplies.

Unlike the price for pipeline imports from Canada, the price of LNG imports declined in 1999 to \$2.47 per thousand cubic feet, 6 percent less than the 1998 price. This decline occurred as global demand for LNG diminished. The price of imports from Algeria, the largest single source of LNG imports, declined by a lesser amount, 4 percent, to \$2.41 per million cubic feet. Most of these imports were made under long-term agreements. LNG prices are reported as either “landed,” the price at the point of entry, or “tailgate,” the price at the point of entry plus regasification charges. (The footnotes in Tables SR2 through SR9 identify how shipment prices are categorized.)

During 1999, the United States exported LNG to Japan by tanker and to Mexico by truck. LNG exports to Japan declined by 4 percent to 64 billion cubic feet. The price of these exports rose by 6 percent over the 1998 level to \$3.08 per thousand cubic feet. LNG is shipped from southern Alaska to Japan under long-term agreements. For the second year in a row, the United States exported very small amounts of LNG to Mexico. In 1999, U.S. LNG exports to Mexico were 275 million cubic feet, less than 1 percent of total LNG exports.

Although LNG imports represent only about 5 percent of total U.S. imports, they are a significant supply source for several regional markets. Certain developments in the natural gas industry, such as the current rising prices for other natural gas supplies and the increased demand for gas for power generation, indicate possible substantial growth potential in the demand for LNG in the United States. International supplies of LNG are also readily available. Trinidad plans to expand its existing LNG production and export facility, which would triple its production and export of LNG by the year 2003. Much of this future LNG supply will likely be marketed in the United States. Abundant supplies and increasing regional demand may work together to ensure an active LNG import market in the United States.

---

<sup>1</sup>U.S. Department of Energy, Office of Fossil Energy, *Natural Gas Imports and Exports, Fourth Quarter Report 1999*, DOE/FE-0414 (March 2000).



## **Data Sources**

Data for 1995 through 1999 are based on company filings made with the U.S. Department of Energy, Office of Fossil Energy. These filings report data on a monthly level and are received quarterly. The Office of Fossil Energy collects these data as part of its regulatory oversight responsibilities. These data are published by the Office of Fossil Energy in the quarterly report, *Natural Gas Imports and Exports* (DOE/FE-0360).

The data for 1994 and earlier years are taken from Form FPC-14, “Annual Report for Importers and Exporters of Natural Gas,” which was discontinued in 1995. The data reported on Form FPC-14 represented physical movements of natural gas, whereas the data collected by the Office of Fossil Energy are reported on an equity (sales) basis. For 1994 and earlier years, comparisons of the information in this article (physical movements) with the information reported by the Office of Fossil Energy (sales) may show differences because reporting requirements were different. Efforts were made to resolve these differences. Further information about how import and export data are collected is provided in the *Natural Gas Monthly*, Appendix B, “Data Sources.”

**Table SR1. Historical Summary of U.S. Natural Gas Net Imports, 1955-1999**  
(Million Cubic Feet)

Year	Total Imports	Total Exports	Net Imports	Total Consumption	Net Imports as Percentage of Total Consumption
1955	10,888	31,029	-	8,693,657	-
1956	10,380	35,963	-	9,288,865	-
1957	37,941	41,655	-	9,846,139	-
1958	135,797	38,719	97,078	10,302,608	0.9
1959	133,990	18,413	115,577	11,321,181	1.0
1960	155,646	11,332	144,314	11,966,537	1.2
1961	218,860	10,747	208,113	12,489,268	1.7
1962	401,534	15,814	385,720	13,266,513	2.9
1963	406,204	16,957	389,247	13,970,229	2.8
1964	443,326	19,603	423,723	14,813,808	2.9
1965	456,394	26,132	430,262	15,279,716	2.8
1966	479,780	24,639	455,141	16,452,403	2.8
1967	564,226	81,614	482,612	17,388,360	2.8
1968	651,885	93,745	558,140	18,632,062	3.0
1969	726,951	51,304	675,647	20,056,240	3.4
1970	820,780	69,813	750,967	21,139,386	3.6
1971	934,548	80,212	854,336	21,793,454	3.9
1972	1,019,496	78,013	941,483	22,101,452	4.3
1973	1,032,901	77,169	955,732	22,049,363	4.3
1974	959,284	76,789	882,495	21,223,133	4.2
1975	953,008	72,675	880,333	19,537,593	4.5
1976	963,768	64,711	899,057	19,946,496	4.5
1977	1,011,002	55,626	955,376	19,520,581	4.9
1978	965,545	52,532	913,013	19,627,478	4.7
1979	1,253,383	55,673	1,197,710	20,240,761	5.9
1980	984,767	48,731	936,036	19,877,293	4.7
1981	903,949	59,372	844,577	19,403,858	4.4
1982	933,336	51,728	881,608	18,001,055	4.9
1983	918,407	54,639	863,768	16,834,914	5.1
1984	843,060	54,753	788,307	17,950,524	4.4
1985	949,715	55,268	894,447	17,280,943	5.2
1986	750,449	61,271	689,178	16,221,296	4.2
1987	992,532	54,020	938,512	17,210,809	5.5
1988	1,293,812	73,638	1,220,174	18,029,588	6.8
1989	1,381,520	106,871	1,274,648	18,800,830	6.8
1990	1,532,259	85,565	1,446,694	18,716,269	7.6
1991	1,773,313	129,244	1,644,068	19,035,156	8.4
1992	2,137,504	216,282	1,921,222	19,544,364	9.7
1993	2,350,115	140,183	2,209,931	20,279,095	10.9
1994	2,623,839	161,738	2,462,101	20,707,717	11.9
1995	2,841,048	154,119	2,686,929	21,580,665	12.5
1996	2,937,413	153,393	2,784,020	21,966,991	12.7
1997	2,994,173	157,006	2,837,167	21,972,770	12.9
1998	3,152,058	159,007	2,993,051	<sup>R</sup> 21,262,023	14.1
1999	3,585,505	163,415	3,380,676	<sup>a</sup> 21,360,877	15.8

<sup>a</sup> Preliminary data.

- = Not Applicable.

<sup>R</sup> Revised Data.

**Notes:** Totals may not equal sum of components due to independent rounding. Geographic coverage is the continental United States including Alaska.

**Sources:** Total Consumption: *Historical Natural Gas Annual* for

1955 through 1989; *Natural Gas Monthly* July 1995 for 1989 and 1990, August 1999 for 1991 through 1999. **All Other Data:** 1955-1971: Federal Power Commission, informally collected by letter. 1972-1994: Energy Information Administration, Form FPC-14, "Annual Report for Importers and Exporters of Natural Gas." 1995 to 1999: Office of Fossil Energy, U.S. Department of Energy, *Natural Gas Imports and Exports*.

**Table SR2. Summary of U.S. Natural Gas Imports, 1998-1999**

Source	Volume			Average Btu		Revenue		Average Price					
	(million cubic feet)		Percent Change	(Cubic Foot)		(thousand dollars)		(dollars/ thousand cubic feet)		Percent Change	(dollars/ million Btu)		Percent Change
	1998	1999		1998	1999	1998	1999	1998	1999		1998	1999	
<b>Pipeline</b>													
Canada .....	3,052,073	3,367,545	10.3	1,021	1,019	5,954,906	7,513,215	1.95	2.23	14.3	1.91	2.19	14.6
Mexico .....	14,532	54,530	275.2	1,013	1,000	29,554	116,951	2.03	2.14	5.5	2.01	2.14	6.8
Total .....	3,066,605	3,422,075	11.6	1,021	1,019	5,984,460	7,630,167	1.95	2.23	14.3	1.91	2.19	14.5
<b>LNG</b>													
Algeria .....	68,567	75,763	10.5	1,088	1,084	172,260	182,495	2.51	2.41	-4.1	2.31	2.22	-3.8
Australia .....	11,634	11,904	2.3	1,162	1,160	38,381	32,197	3.30	2.70	-18.0	2.84	2.33	-17.9
Un. Arab Emirates ..	5,252	2,713	-48.3	1,164	1,128	13,806	8,220	2.63	3.03	15.3	2.26	2.69	18.9
Qatar .....	0	19,697	-	0	1,124	0	53,323	0	2.71	-	0	2.41	-
Trinidad .....	0	50,777	-	0	1,048	0	121,230	0	2.39	-	0	2.28	-
Malaysia .....	0	2,576	-	0	1,097	0	6,079	0	2.36	-	0	2.15	-
Total .....	85,453	163,430	91.3	1,102	1,084	224,447	403,546	2.63	2.47	-6.0	2.38	2.28	-4.4
<b>Grand Total</b> .....	<b>3,152,058</b>	<b>3,585,505</b>	<b>13.8</b>	<b>1,023</b>	<b>1,022</b>	<b>6,208,908</b>	<b>8,033,712</b>	<b>1.97</b>	<b>2.24</b>	<b>13.7</b>	<b>1.93</b>	<b>2.19</b>	<b>13.9</b>

- Not Applicable.

**Notes:** Totals may not equal sum of components due to independent rounding. Geographic coverage is the continental United States including Alaska. Prices for LNG imports are reported as "landed," defined as received at the terminal or "tailgate," defined as after regasification at the terminal. Generally, prices for shipments received at Everett, MA are reported as landed and at Lake Charles, LA as tailgate. For 1998 and 1999, the percentages of volumes associated with the type of price are: **Algeria-1998,**

55 percent landed, 45 percent tailgate; 1999, 56 percent landed, 44 percent tailgate. **Australia-1998,** 39 percent landed, 61 percent tailgate; 1999, 21 percent landed, 79 percent tailgate. **Trinidad-1999,** 100 percent landed. **Qatar-1999,** 100 percent tailgate. **United Arab Emirates-1998,** nearly 100 percent tailgate; 1999, 100 percent landed. **Malaysia-1999,** 100 percent landed.

**Sources:** Office of Fossil Energy, U.S. Department of Energy, *Natural Gas Imports and Exports*.

**Table SR3. Summary of U.S. Natural Gas Exports, 1998-1999**

Source	Volume			Average Btu		Revenue		Average Price					
	(million cubic feet)		Percent Change	(Cubic Foot)		(thousand dollars)		(dollars/ thousand cubic feet)		Percent Change	(dollars/ million Btu)		Percent Change
	1998	1999		1998	1999	1998	1999	1998	1999		1998	1999	
<b>Pipeline</b>													
Canada .....	39,891	38,508	-3.5	1,013	1,019	89,714	90,579	2.25	2.35	4.6	2.22	2.31	4.0
Mexico .....	53,133	61,025	14.9	1,011	1,000	108,264	138,666	2.04	2.27	11.5	2.02	2.27	12.7
Total .....	93,023	99,533	7.0	1,012	1,004	197,978	229,245	2.13	2.30	8.2	2.10	2.29	9.1
<b>LNG</b>													
Japan .....	65,951	63,607	-3.6	1,010	1,010	191,609	196,039	2.91	3.08	6.1	2.88	3.05	6.1
Mexico .....	33	275	733.3	1,011	1,000	185	1,910	5.69	6.95	23.4	5.63	6.95	25.3
Total .....	65,984	63,882	-3.2	1,010	1,010	191,794	197,949	2.91	3.10	6.6	2.88	3.07	6.6
<b>Grand Total</b> .....	<b>159,007</b>	<b>163,415</b>	<b>2.8</b>	<b>1,011</b>	<b>1,006</b>	<b>389,772</b>	<b>427,194</b>	<b>2.45</b>	<b>2.61</b>	<b>6.6</b>	<b>2.42</b>	<b>2.60</b>	<b>7.2</b>

**Notes:** Totals may not equal sum of components due to independent rounding. Geographic coverage is the continental United States including Alaska. The price of LNG exports to Japan is the "landed" price, defined as

received at the terminal in Japan.

**Sources:** Office of Fossil Energy, U.S. Department of Energy, *Natural Gas Imports and Exports*.

**Table SR4. Historical Summary of U.S. Natural Gas Imports, 1955-1999**  
(Volumes in Million Cubic Feet; Average Prices in Dollars per Thousand Cubic Feet)

Year	Imports From								Total Imports <sup>a</sup>	Average Price
	Pipeline		LNG							
	Canada	Mexico	Algeria	Australia	Qatar	Trinidad	United Arab Emirates	Others		
1955	10,881	7	0	0	0	0	0	0	10,888	NA
1956	10,374	6	0	0	0	0	0	0	10,380	NA
1957	20,971	16,970	0	0	0	0	0	0	37,941	NA
1958	89,586	46,211	0	0	0	0	0	0	135,797	NA
1959	83,061	50,929	0	0	0	0	0	0	133,990	NA
1960	108,657	46,989	0	0	0	0	0	0	155,646	NA
1961	167,104	51,756	0	0	0	0	0	0	218,860	NA
1962	350,438	51,096	0	0	0	0	0	0	401,534	NA
1963	356,455	49,749	0	0	0	0	0	0	406,204	NA
1964	390,721	52,605	0	0	0	0	0	0	443,326	NA
1965	404,686	51,708	0	0	0	0	0	0	456,394	NA
1966	430,189	49,591	0	0	0	0	0	0	479,780	NA
1967	513,255	50,971	0	0	0	0	0	0	564,226	NA
1968	604,462	47,423	0	0	0	0	0	0	651,885	NA
1969	680,106	46,845	0	0	0	0	0	0	726,951	NA
1970	778,687	41,336	757	0	0	0	0	0	820,780	NA
1971	910,926	20,689	1,433	0	0	0	0	<sup>b</sup> 1,500	934,548	NA
1972	1,009,093	8,140	2,032	0	0	0	0	<sup>b</sup> 230	1,019,496	0.31
1973	1,027,216	1,632	3,388	0	0	0	0	<sup>b</sup> 667	1,032,901	0.35
1974	959,063	222	0	0	0	0	0	0	959,284	0.55
1975	948,115	0	4,893	0	0	0	0	0	953,008	1.21
1976	953,613	0	10,155	0	0	0	0	0	963,768	1.72
1977	996,723	2,384	11,324	0	0	0	0	<sup>b</sup> 572	1,011,002	1.98
1978	881,123	0	84,422	0	0	0	0	0	965,545	2.13
1979	1,000,775	0	252,608	0	0	0	0	0	1,253,383	2.49
1980	796,507	102,410	85,850	0	0	0	0	0	984,767	4.28
1981	762,107	105,013	36,824	0	0	0	0	<sup>b</sup> 6	903,949	4.88
1982	783,407	94,794	55,136	0	0	0	0	0	933,336	5.03
1983	711,923	75,361	131,124	0	0	0	0	0	918,407	4.78
1984	755,368	51,502	36,191	0	0	0	0	0	843,060	4.08
1985	926,056	0	23,659	0	0	0	0	0	949,715	3.21
1986	748,780	0	0	0	0	0	0	<sup>c</sup> 1,669	750,449	2.43
1987	992,532	0	0	0	0	0	0	0	992,532	1.95
1988	1,276,322	0	17,490	0	0	0	0	0	1,293,812	1.84
1989	1,339,357	0	42,163	0	0	0	0	0	1,381,520	1.82
1990	1,448,065	0	84,193	0	0	0	0	0	1,532,259	1.94
1991	1,709,716	0	63,596	0	0	0	0	0	1,773,313	1.83
1992	2,094,387	0	43,116	0	0	0	0	0	2,137,504	1.85
1993	2,266,751	1,678	81,685	0	0	0	0	0	2,350,115	2.03
1994	2,566,049	7,013	50,778	0	0	0	0	0	2,623,839	1.87
1995	2,816,408	6,722	17,918	0	0	0	0	0	2,841,048	1.49
1996	2,883,277	13,862	35,325	0	0	0	4,949	0	2,937,413	1.97
1997	2,899,152	17,243	65,675	9,685	0	0	2,417	0	2,994,173	2.17
1998	3,052,073	14,532	68,567	11,634	0	0	5,252	0	3,152,058	1.97
1999	3,367,545	54,530	75,763	11,904	19,697	50,777	2,713	<sup>d</sup> 2,576	3,585,505	2.24

<sup>a</sup> Volumes reported for 1966 through 1997 are on a pressure base of 14.73 pounds per square inch absolute and 60 degrees Fahrenheit. Volumes for 1955 through 1965 are as reported.

<sup>b</sup> Received from Canada.

<sup>c</sup> Received from Indonesia.

<sup>d</sup> Received from Malaysia.

<sup>NA</sup> Not Available.

**Notes:** Totals may not equal sum of components due to independent rounding. Geographic coverage is the continental United States including Alaska. Prices for LNG imports are reported as "landed," defined as received at the terminal or "tailgate," defined as after regasification at the terminal. Generally, prices for shipments received at Everett, MA are reported as landed and at Lake Charles, LA as

tailgate. For 1998 and 1999, the percentages of volumes associated with the type of price are: **Algeria**-1998, 55 percent landed, 45 percent tailgate; 1999, 56 percent landed, 44 percent tailgate.

**Australia**-1998, 39 percent landed, 61 percent tailgate; 1999, 21 percent landed, 79 percent tailgate. **Trinidad**-1999, 100 percent landed.

**Qatar**-1999, 100 percent tailgate. **United Arab Emirates**-1998, nearly 100 percent tailgate; 1999, 100 percent landed. **Malaysia**-1999, 100 percent landed.

**Sources:** 1955-1971 Federal Power Commission, informally collected by letter. 1972-1994: Energy Information Administration, Form FPC-14, "Annual Report for Importers and Exporters of Natural Gas." 1995 to 1999: Office of Fossil Energy, U.S. Department of Energy, *Natural Gas Imports and Exports*.

**Table SR5. Historical Summary of U.S. Natural Gas Exports, 1955-1999**  
(Volumes in Million Cubic Feet; Average Prices in Dollars per Thousand Cubic Feet)

Year	Exports to				Total Exports	Average Price
	Pipeline		LNG			
	Canada	Mexico	Japan	Mexico		
1955	11,467	19,562	0	0	31,029	NA
1956	16,819	19,144	0	0	35,963	NA
1957	30,867	10,788	0	0	41,655	NA
1958	32,129	6,590	0	0	38,719	NA
1959	11,739	6,674	0	0	18,413	NA
1960	5,759	5,573	0	0	11,332	NA
1961	5,577	5,170	0	0	10,747	NA
1962	5,574	10,240	0	0	15,814	NA
1963	6,879	10,078	0	0	16,957	NA
1964	9,763	9,840	0	0	19,603	NA
1965	17,979	8,153	0	0	26,132	NA
1966	20,281	4,358	0	0	24,639	NA
1967	70,456	11,158	0	0	81,614	NA
1968	81,647	12,098	0	0	93,745	NA
1969	34,931	13,391	2,982	0	51,304	NA
1970	10,878	14,678	44,257	0	69,813	NA
1971	14,349	15,632	50,231	0	80,212	NA
1972	15,553	14,579	47,882	0	78,013	0.51
1973	14,824	13,999	48,346	0	77,169	0.54
1974	13,263	13,268	50,258	0	76,789	0.72
1975	10,219	9,454	53,002	0	72,675	1.25
1976	7,506	7,425	49,779	0	64,711	1.55
1977	31	3,940	51,655	0	55,626	1.92
1978	66	4,033	48,434	0	52,532	2.13
1979	76	4,308	51,289	0	55,673	2.29
1980	113	3,886	44,732	0	48,731	4.70
1981	106	3,337	55,929	0	59,372	5.90
1982	162	1,705	49,861	0	51,728	5.81
1983	136	1,646	52,857	0	54,639	5.10
1984	127	1,786	52,840	0	54,753	4.92
1985	178	2,207	52,883	0	55,268	4.77
1986	9,203	1,896	50,172	0	61,271	2.81
1987	3,297	2,125	48,599	0	54,020	3.07
1988	19,738	2,327	51,573	0	73,638	2.74
1989	38,443	17,004	51,424	0	106,871	2.51
1990	17,359	15,659	52,546	0	85,565	3.10
1991	14,791	60,448	54,005	0	129,244	2.59
1992	67,777	95,973	52,532	0	216,282	2.25
1993	44,518	39,676	55,989	0	140,183	2.59
1994	52,556	46,500	62,682	0	161,738	2.50
1995	27,554	61,283	65,283	0	154,119	2.39
1996	51,905	33,840	67,648	0	153,393	2.97
1997	56,447	38,372	62,187	0	157,006	3.02
1998	39,891	53,133	65,951	33	159,007	2.45
1999	38,508	61,025	63,607	275	163,415	2.61

<sup>NA</sup> Not Available.

**Notes:** Totals may not equal sum of components due to independent rounding. Geographic coverage is the continental United States including Alaska. The price of LNG exports to Japan is the "landed" price, defined as received at the terminal in Japan. LNG exports to Mexico are shipped by truck.

**Sources:** Federal Power Commission, informally collected by letter. 1972-1994: Energy Information Administration, Form FPC-14, "Annual Report for Importers and Exporters of Natural Gas." 1995 to 1999: Office of Fossil Energy, U.S. Department of Energy, *Natural Gas Imports and Exports*.

**Table SR6. U.S. Natural Gas Imports by Point of Entry, 1998-1999**  
(Volumes in Million Cubic Feet; Average Prices in Dollars per Thousand Cubic Feet)

Year and Month	Canada (Pipeline)											
	Pacific Northwest		West		Midwest							
	Sumas, WA		Eastport, ID		Babb, MT		Detroit, MI		International Falls, MN		Marysville, MI	
	Volume	Average Price	Volume	Average Price	Volume	Average Price	Volume	Average Price	Volume	Average Price	Volume	Average Price
<b>1998</b>												
January .....	40,595	1.88	77,439	1.54	1,803	1.63	1,076	2.66	651	1.88	0	-
February .....	31,310	1.53	68,272	1.44	1,744	1.58	758	2.50	583	1.76	0	-
March .....	33,587	1.40	76,659	1.54	1,623	1.63	921	2.36	634	2.00	0	-
April .....	30,712	1.59	74,345	1.61	1,082	1.80	956	2.29	427	2.03	0	-
May .....	26,860	1.71	73,672	1.68	1,635	1.91	868	2.44	417	2.17	0	-
June .....	25,448	1.43	68,583	1.45	1,614	1.70	1,218	2.24	401	1.92	0	-
July .....	29,365	1.53	73,154	1.51	1,450	1.43	1,292	2.39	475	2.02	399	2.48
August .....	34,036	1.65	73,253	1.58	1,773	1.44	884	2.37	496	1.97	862	2.19
September .....	32,158	1.56	73,457	1.40	1,599	1.32	536	2.46	469	1.67	406	1.91
October .....	31,364	1.83	72,653	1.59	1,123	1.66	1,032	2.40	522	2.14	159	1.98
November .....	29,459	2.15	73,781	1.88	1,069	1.93	626	2.54	493	2.26	0	-
December .....	29,771	2.27	74,573	1.94	1,261	1.94	759	2.67	537	2.25	0	-
Total .....	374,666	1.71	879,840	1.60	17,776	1.65	10,925	2.43	6,103	2.00	1,827	2.17
<b>1999</b>												
January .....	37,355	2.51	71,464	1.85	661	1.85	817	2.64	597	2.06	135	2.06
February .....	36,836	1.86	65,921	1.71	390	1.70	761	2.58	524	1.96	0	-
March .....	41,238	1.66	63,109	1.66	503	1.67	532	2.60	545	1.88	0	-
April .....	31,465	1.61	66,166	1.62	281	1.73	665	2.39	366	2.01	0	-
May .....	34,468	2.02	63,572	1.93	526	2.09	506	2.43	24	2.18	0	-
June .....	26,743	2.01	58,471	1.92	237	2.11	485	2.46	24	2.05	0	-
July .....	32,751	2.04	63,904	1.97	315	2.12	546	2.31	390	2.33	0	-
August .....	35,655	2.22	64,008	2.06	173	2.14	634	2.47	382	2.44	0	-
September .....	34,088	2.46	66,637	2.38	266	2.46	392	2.52	432	2.74	0	-
October .....	34,353	2.44	69,546	2.31	237	2.37	699	2.48	470	2.64	0	-
November .....	34,188	2.79	71,290	2.71	28	2.02	765	2.45	549	3.03	0	-
December .....	36,496	2.37	76,257	2.26	224	2.42	869	2.66	554	2.33	0	-
Total .....	415,636	2.17	800,345	2.04	3,841	2.00	7,671	2.51	4,857	2.33	135	2.06

See footnotes at end of table.

**Table SR6. U.S. Natural Gas Imports by Point of Entry, 1998-1999**  
(Volumes in Million Cubic Feet; Average Prices in Dollars per Thousand Cubic Feet) —  
Continued

Year and Month	Canada (Pipeline)											
	Midwest											
	Noyes, MN		Port of del Bonita, MT		Port of Morgan, MT		Portal, ND		St Clair, MI		Warroad, MN	
	Volume	Average Price	Volume	Average Price	Volume	Average Price	Volume	Average Price	Volume	Average Price	Volume	Average Price
<b>1998</b>												
January .....	38,223	2.26	5	1.15	50,322	2.01	885	1.94	1,453	2.37	83	1.64
February .....	37,558	2.14	5	1.18	44,172	1.81	823	1.68	308	2.40	59	1.35
March .....	35,239	2.33	6	1.34	48,273	1.90	910	1.82	78	2.61	62	1.58
April .....	35,443	2.24	5	1.44	45,198	1.98	877	1.82	1,708	2.58	32	1.67
May .....	36,371	1.97	5	1.71	47,922	1.93	626	1.72	1,282	2.45	18	1.65
June .....	35,909	2.00	0	-	42,488	1.78	895	1.61	1,734	2.21	19	1.42
July .....	44,516	2.06	0	-	46,389	2.03	910	1.60	5,262	2.17	11	1.73
August .....	42,102	1.74	0	-	47,318	1.64	921	1.68	7,896	1.88	13	1.34
September .....	37,034	1.74	0	-	45,144	1.38	895	1.55	7,290	1.83	15	1.13
October .....	44,390	2.09	0	-	45,125	1.71	744	1.51	4,577	2.09	27	1.52
November .....	42,504	2.14	0	-	43,246	1.85	394	1.82	1,183	2.06	54	2.12
December .....	39,287	2.16	0	-	50,617	1.88	388	1.96	1,821	2.27	81	2.15
Total .....	468,576	2.07	25	1.37	556,215	1.83	9,268	1.71	34,592	2.07	473	1.71
<b>1999</b>												
January .....	45,408	1.95	6	2.29	68,058	1.67	384	1.76	2,907	1.97	96	1.83
February .....	37,256	1.97	6	2.18	61,468	1.62	347	1.71	425	1.96	72	1.75
March .....	41,248	1.77	7	2.09	65,715	1.47	380	1.89	471	1.77	58	1.69
April .....	36,166	1.97	6	2.34	57,471	1.61	313	1.75	1,311	1.96	13	1.69
May .....	40,349	2.31	8	2.54	67,893	2.02	324	1.87	2,714	2.46	13	2.18
June .....	38,061	2.23	0	-	70,398	1.93	312	1.95	2,580	2.33	11	2.05
July .....	48,218	2.19	5	2.57	63,842	2.02	322	1.95	1,711	2.37	11	2.12
August .....	47,564	2.48	11	3.02	68,562	2.26	322	1.95	4,728	2.75	12	2.43
September .....	44,496	2.75	11	2.92	65,095	2.53	311	2.12	6,514	3.00	12	2.82
October .....	43,135	2.54	11	3.27	66,870	2.33	322	2.08	4,686	2.67	14	2.47
November .....	41,055	2.91	9	2.65	62,770	2.77	34	1.22	4,008	3.20	43	3.05
December .....	43,910	2.28	9	2.53	72,285	2.06	45	1.23	1,333	2.28	57	2.18
Total .....	506,866	2.29	89	2.66	790,427	2.03	3,416	1.88	33,388	2.62	412	2.06

See footnotes at end of table.

**Table SR6. U.S. Natural Gas Imports by Point of Entry, 1998-1999**  
(Volumes in Million Cubic Feet; Average Prices in Dollars per Thousand Cubic Feet) —  
Continued

Year and Month	Canada (Pipeline)											
	Midwest				Northeast							
	Whitlash, MT		Total		Champlain, NY		Grand Island, NY		Highgate Springs, VT		Massena, NY	
	Volume	Average Price	Volume	Average Price	Volume	Average Price	Volume	Average Price	Volume	Average Price	Volume	Average Price
<b>1998</b>												
January .....	765	1.19	94,382	2.11	748	3.40	5,551	2.86	1,216	2.08	1,053	3.00
February .....	729	1.25	85,916	1.95	1,074	3.44	4,547	2.88	970	2.00	1,142	2.91
March .....	711	1.34	87,545	2.07	1,501	3.47	5,174	3.06	954	2.24	1,166	2.93
April .....	645	1.44	85,494	2.10	1,296	3.53	3,264	3.06	576	2.75	904	3.06
May .....	657	1.71	89,175	1.96	1,339	3.53	2,086	3.33	364	2.89	736	3.24
June .....	109	1.45	83,491	1.89	1,336	3.53	3,175	2.85	327	2.85	849	3.20
July .....	121	1.42	99,916	2.05	1,360	3.53	3,110	2.90	326	3.05	507	2.31
August .....	121	1.49	101,465	1.71	1,327	3.52	3,131	2.44	306	2.77	445	2.00
September .....	115	1.24	92,607	1.57	1,357	3.53	3,416	2.37	347	2.37	442	1.77
October .....	759	1.59	97,714	1.91	1,310	3.55	3,538	2.60	550	2.10	502	2.19
November .....	852	1.93	90,028	2.00	1,121	3.67	3,863	2.75	752	2.59	659	2.59
December .....	948	2.01	95,310	2.02	1,486	3.63	4,127	2.61	993	2.77	780	2.74
Total .....	6,533	1.57	1,103,044	1.94	15,258	3.53	44,981	2.80	7,680	2.43	9,184	2.78
<b>1999</b>												
January .....	913	1.78	119,982	1.79	1,478	3.67	2,728	2.81	1,293	2.17	1,038	2.60
February .....	897	1.69	102,146	1.76	1,338	3.61	2,678	2.69	1,056	2.20	854	2.55
March .....	976	1.64	110,435	1.60	1,456	3.60	3,521	2.62	984	2.22	893	2.40
April .....	893	1.82	97,485	1.76	1,413	3.66	2,965	2.59	625	2.85	599	2.48
May .....	944	1.99	113,301	2.14	1,432	3.66	2,406	3.28	372	3.47	397	2.83
June .....	909	2.05	113,017	2.04	1,392	3.68	1,976	3.30	297	3.81	312	2.76
July .....	944	2.03	116,304	2.10	1,495	3.68	2,477	3.07	309	3.77	313	2.85
August .....	974	2.33	123,362	2.37	1,485	3.67	3,533	3.24	410	3.55	308	3.03
September .....	999	2.21	118,528	2.63	1,409	3.67	1,834	3.60	365	4.10	481	3.07
October .....	1,198	2.58	117,642	2.42	1,453	3.67	3,013	3.39	624	3.52	491	3.15
November .....	1,516	2.17	110,777	2.83	1,379	3.81	3,321	3.34	741	3.74	666	3.50
December .....	1,604	2.07	120,890	2.15	1,441	3.82	2,688	3.20	1,065	2.92	906	2.98
Total .....	12,767	2.05	1,363,869	2.14	17,171	3.68	33,140	3.07	8,141	2.91	7,258	2.81

See footnotes at end of table.



**Table SR6. U.S. Natural Gas Imports by Point of Entry, 1998-1999**  
(Volumes in Million Cubic Feet; Average Prices in Dollars per Thousand Cubic Feet) —  
Continued

Year and Month	Canada (Pipeline)											
	Northeast										Total	
	Niagara Falls, NY		North Troy, VT		Pittsburg, NH		Waddington, NY		Total		Volume	Average Price
	Volume	Average Price	Volume	Average Price	Volume	Average Price	Volume	Average Price	Volume	Average Price		
<b>1998</b>												
January .....	27,689	2.86	962	3.08	0	-	25,597	2.57	62,817	2.74	276,118	2.06
February .....	22,107	2.79	869	3.13	0	-	22,061	2.41	52,769	2.65	239,091	1.90
March .....	25,181	2.78	962	2.70	0	-	23,846	2.52	58,784	2.71	257,485	1.97
April .....	25,112	2.74	931	2.75	0	-	23,852	2.58	55,935	2.72	247,363	2.03
May .....	23,165	2.71	962	2.75	0	-	24,883	2.50	53,535	2.67	243,868	2.00
June .....	26,299	2.57	931	2.75	0	-	24,512	2.32	57,429	2.51	235,847	1.86
July .....	24,797	2.64	940	2.57	0	-	25,027	2.49	56,067	2.61	259,412	1.96
August .....	26,698	2.47	965	2.54	0	-	25,990	2.10	58,860	2.33	268,535	1.80
September .....	25,048	2.32	933	2.55	0	-	24,092	2.02	55,635	2.22	254,752	1.66
October .....	26,273	2.43	964	2.68	0	-	24,523	2.35	57,661	2.43	260,135	1.92
November .....	24,056	2.57	933	2.69	0	-	22,926	2.37	54,310	2.52	247,971	2.09
December .....	27,175	2.56	964	2.82	0	-	25,927	2.38	61,452	2.52	261,495	2.14
Total .....	303,599	2.62	11,319	2.75	0	-	293,234	2.38	685,255	2.55	3,052,073	1.95
<b>1999</b>												
January .....	30,842	2.43	775	1.76	189	2.55	25,689	2.17	64,032	2.36	292,833	2.02
February .....	32,705	2.39	700	2.56	381	2.23	24,511	2.13	64,223	2.33	269,126	1.90
March .....	36,350	2.21	775	2.53	812	2.14	28,196	2.03	72,987	2.19	287,769	1.77
April .....	27,900	2.26	0	-	1,714	2.22	26,733	2.14	61,949	2.27	257,065	1.83
May .....	28,439	2.53	0	-	1,919	2.50	28,913	2.53	63,878	2.59	275,219	2.18
June .....	29,423	2.50	0	-	1,560	2.48	27,049	2.46	62,009	2.54	260,240	2.13
July .....	30,331	2.52	0	-	2,651	2.48	27,889	2.51	65,465	2.57	278,424	2.17
August .....	30,724	2.77	0	-	1,687	2.65	27,545	2.83	65,692	2.85	288,717	2.39
September .....	29,156	2.91	0	-	2,428	2.90	25,872	3.10	61,545	3.04	280,798	2.64
October .....	30,642	2.79	0	-	2,650	2.80	26,763	2.89	65,636	2.89	287,177	2.50
November .....	31,222	3.03	0	-	2,867	3.07	28,063	3.02	68,259	3.07	284,514	2.85
December .....	34,781	2.62	0	-	3,962	2.47	27,177	2.60	72,020	2.66	305,663	2.32
Total .....	372,515	2.58	2,250	2.27	22,820	2.61	324,400	2.54	787,695	2.61	3,367,545	2.23

See footnotes at end of table.

**Table SR6. U.S. Natural Gas Imports by Point of Entry, 1998-1999**

(Volumes in Million Cubic Feet; Average Prices in Dollars per Thousand Cubic Feet) — Continued

Year and Month	Mexico (Pipeline)									
	Texas								Total	
	Alamo, TX		El Paso, TX		Hidalgo, TX		Penitas, TX		Volume	Average Price
	Volume	Average Price	Volume	Average Price	Volume	Average Price	Volume	Average Price		
<b>1998</b>										
January .....	0	-	5	2.91	10	2.03	40	2.04	55	2.12
February .....	0	-	21	1.86	2,163	2.04	0	-	2,184	2.04
March .....	0	-	0	-	380	2.20	0	-	380	2.20
April .....	0	-	0	-	3,249	2.37	0	-	3,249	2.37
May .....	0	-	0	-	845	2.15	0	-	845	2.15
June .....	0	-	0	-	5	2.21	0	-	5	2.21
July .....	0	-	812	2.19	1,009	2.09	0	-	1,821	2.13
August .....	0	-	0	-	1,413	1.78	0	-	1,413	1.78
September .....	0	-	157	1.60	2,100	1.88	0	-	2,257	1.86
October .....	0	-	0	-	905	1.65	0	-	905	1.65
November .....	0	-	0	-	0	-	0	-	0	-
December .....	0	-	0	-	1,418	1.77	0	-	1,418	1.77
Total .....	0	-	996	2.09	13,496	2.03	40	2.04	14,532	2.03
<b>1999</b>										
January .....	0	-	0	-	4,891	1.74	0	-	4,891	1.74
February .....	0	-	0	-	4,398	1.69	0	-	4,398	1.69
March .....	0	-	0	-	751	1.60	0	-	751	1.60
April .....	0	-	0	-	4,193	2.02	0	-	4,193	2.02
May .....	0	-	0	-	6,844	1.94	0	-	6,844	1.94
June .....	0	-	0	-	4,978	2.12	0	-	4,978	2.12
July .....	0	-	0	-	3,877	2.21	0	-	3,877	2.21
August .....	0	-	0	-	6,028	2.61	0	-	6,028	2.61
September .....	982	2.40	0	-	3,661	2.39	0	-	4,643	2.39
October .....	3,429	2.53	0	-	739	2.29	0	-	4,168	2.49
November .....	5,159	2.33	0	-	1,304	2.22	0	-	6,463	2.31
December .....	3,081	2.07	0	-	215	2.22	0	-	3,296	2.08
Total .....	12,651	2.33	0	-	41,879	2.09	0	-	54,530	2.14

See footnotes at end of table.

**Table SR6. U.S. Natural Gas Imports by Point of Entry, 1998-1999**  
(Volumes in Million Cubic Feet; Average Prices in Dollars per  
Thousand Cubic Feet) — Continued

Year and Month	LNG						Grand Total	
	Midwest		Northeast		Total		Volume	Average Price
	Lake Charles, LA		Everett, MA		Volume	Average Price		
	Volume	Average Price	Volume	Average Price				
<b>1998</b>								
January .....	2,512	2.52	7,593	2.50	10,105	2.51	286,278	2.07
February .....	2,553	2.52	7,224	2.95	9,777	2.84	251,052	1.94
March .....	0	-	5,166	2.50	5,166	2.50	263,032	1.98
April .....	2,549	2.52	0	-	2,549	2.52	253,161	2.04
May .....	2,535	2.52	5,062	2.50	7,596	2.51	252,310	2.02
June .....	5,020	2.71	2,570	2.50	7,590	2.64	243,442	1.89
July .....	5,086	2.52	0	-	5,086	2.52	266,319	1.97
August .....	4,862	2.71	0	-	4,862	2.71	274,809	1.82
September .....	5,133	2.52	0	-	5,133	2.52	262,142	1.68
October .....	0	-	5,023	2.50	5,023	2.50	266,063	1.93
November .....	5,207	2.66	4,855	3.01	10,062	2.83	258,033	2.12
December .....	7,467	2.71	5,037	2.50	12,504	2.63	275,417	2.16
Total .....	42,922	2.62	42,531	2.64	85,453	2.63	3,152,058	1.97
<b>1999</b>								
January .....	2,551	2.17	10,515	2.48	13,066	2.42	310,790	2.03
February .....	5,042	2.46	7,846	2.96	12,888	2.76	286,412	1.93
March .....	2,549	2.17	10,541	2.51	13,090	2.44	301,610	1.80
April .....	5,069	2.04	5,060	2.44	10,129	2.24	271,387	1.85
May .....	2,480	2.17	6,911	1.92	9,391	1.99	291,454	2.17
June .....	7,259	2.14	6,619	2.08	13,878	2.11	279,096	2.13
July .....	7,522	2.31	6,599	2.11	14,121	2.22	296,422	2.18
August .....	7,432	2.30	9,904	2.33	17,336	2.32	312,081	2.39
September .....	10,104	2.60	6,869	2.56	16,973	2.58	302,414	2.63
October .....	4,924	2.29	8,368	2.64	13,292	2.51	304,637	2.50
November .....	5,087	3.23	9,088	2.85	14,175	2.98	305,152	2.85
December .....	7,343	2.83	7,748	2.84	15,091	2.83	324,050	2.34
Total .....	67,362	2.43	96,068	2.49	163,430	2.47	3,585,505	2.24

- Not Applicable.

**Notes:** Totals may not equal sum of components due to independent rounding. Geographic coverage is the continental United States including Alaska. Prices for LNG imports are reported as "landed," defined as received at the terminal or "tailgate," defined as after regasification at the terminal. Generally, prices for shipments received at Everett, MA are reported as landed and at Lake Charles, LA as tailgate. For 1998 and 1999, the percentages of volumes associated with the type of price are: **Algeria**-1998, 55 percent landed, 45 percent

tailgate; 1999, 56 percent landed, 44 percent tailgate. **Australia**-1998, 39 percent landed, 61 percent tailgate; 1999, 21 percent landed, 79 percent tailgate. **Trinidad**-1999, 100 percent landed. **Qatar**-1999, 100 percent tailgate. **United Arab Emirates**-1998, nearly 100 percent tailgate; 1999, 100 percent landed. **Malaysia**-1999, 100 percent landed.

**Sources:** Office of Fossil Energy, U.S. Department of Energy, *Natural Gas Imports and Exports*.

**Table SR7. Summary of U.S. Natural Gas Imports, 1978-1999**

(Volumes in Million Cubic Feet; Average Prices in Dollars per Thousand Cubic Feet)

Year and Month	Pipeline				Total Pipeline	
	Canada		Mexico		Volume	Average Price
	Volume	Average Price	Volume	Average Price		
<b>1978 Total</b> .....	881,123	2.19	0	-	881,123	2.19
<b>1979 Total</b> .....	1,000,775	2.61	0	-	1,000,775	2.61
<b>1980 Total</b> .....	796,507	4.32	102,410	4.41	898,917	4.33
<b>1981 Total</b> .....	762,107	4.83	105,013	5.01	867,120	4.85
<b>1982 Total</b> .....	783,407	4.97	94,794	5.02	878,200	4.98
<b>1983 Total</b> .....	711,923	4.49	75,361	4.70	787,284	4.51
<b>1984 Total</b> .....	755,368	4.01	51,502	4.49	806,870	4.04
<b>1985 Total</b> .....	926,056	3.17	0	-	926,056	3.17
<b>1986 Total</b> .....	748,780	2.42	0	-	748,780	2.42
<b>1987 Total</b> .....	992,532	1.95	0	-	992,532	1.95
<b>1988 Total</b> .....	1,276,322	1.83	0	-	1,276,322	1.83
<b>1989 Total</b> .....	1,339,357	1.81	0	-	1,339,357	1.81
<b>1990 Total</b> .....	1,448,065	1.91	0	-	1,448,065	1.91
<b>1991 Total</b> .....	1,709,716	1.81	0	-	1,709,716	1.81
<b>1992 Total</b> .....	2,094,387	1.84	0	-	2,094,387	1.84
<b>1993 Total</b> .....	2,266,751	2.02	1,678	1.94	2,268,429	2.02
<b>1994 Total</b> .....	2,566,049	1.86	7,013	1.99	2,572,377	1.86
<b>1995 Total</b> .....	2,816,408	1.48	6,722	1.53	2,823,130	1.48
<b>1996 Total</b> .....	2,883,277	1.96	13,862	2.25	2,897,138	1.96
<b>1997 Total</b> .....	2,899,152	2.15	17,243	2.31	2,916,394	2.15
<b>1998</b>						
January .....	276,118	2.06	55	2.12	276,173	2.06
February .....	239,091	1.90	2,184	2.04	241,275	1.90
March .....	257,485	1.97	380	2.20	257,865	1.97
April .....	247,363	2.03	3,249	2.37	250,612	2.03
May .....	243,868	2.00	845	2.15	244,713	2.00
June .....	235,847	1.86	5	2.21	235,852	1.86
July .....	259,412	1.96	1,821	2.13	261,233	1.96
August .....	268,535	1.80	1,413	1.78	269,948	1.80
September .....	254,752	1.66	2,257	1.86	257,009	1.66
October .....	260,135	1.92	905	1.65	261,040	1.92
November .....	247,971	2.09	0	-	247,971	2.09
December .....	261,495	2.14	1,418	1.77	262,913	2.14
<b>Total</b> .....	3,052,073	1.95	14,532	2.03	3,066,605	1.95
<b>1999</b>						
January .....	292,833	2.02	4,891	1.74	297,724	2.02
February .....	269,126	1.90	4,398	1.69	273,524	1.90
March .....	287,769	1.77	751	1.60	288,520	1.77
April .....	257,065	1.83	4,193	2.02	261,258	1.83
May .....	275,219	2.18	6,844	1.94	282,063	2.17
June .....	260,240	2.13	4,978	2.12	265,218	2.13
July .....	278,424	2.17	3,877	2.21	282,301	2.17
August .....	288,717	2.39	6,028	2.61	294,745	2.39
September .....	280,798	2.64	4,643	2.39	285,441	2.64
October .....	287,177	2.50	4,168	2.49	291,345	2.50
November .....	284,514	2.85	6,463	2.31	290,977	2.84
December .....	305,663	2.32	3,296	2.08	308,959	2.32
<b>Total</b> .....	3,367,545	2.23	54,530	2.14	3,422,075	2.23

See footnotes at end of table.

**Table SR7. Summary of U.S. Natural Gas Imports, 1978-1999**

(Volumes in Million Cubic Feet; Average Prices in Dollars per Thousand Cubic Feet) —  
Continued

Year and Month	LNG					
	Algeria		Australia		Trinidad	
	Volume	Average Price	Volume	Average Price	Volume	Average Price
<b>1978 Total</b> .....	84,422	1.53	0	-	0	-
<b>1979 Total</b> .....	252,608	2.03	0	-	0	-
<b>1980 Total</b> .....	85,850	3.77	0	-	0	-
<b>1981 Total</b> .....	36,824	5.54	0	-	0	-
<b>1982 Total</b> .....	55,136	5.82	0	-	0	-
<b>1983 Total</b> .....	131,124	6.41	0	-	0	-
<b>1984 Total</b> .....	36,191	4.90	0	-	0	-
<b>1985 Total</b> .....	23,659	4.60	0	-	0	-
<b>1986 Total</b> .....	0	-	0	-	0	-
<b>1987 Total</b> .....	0	-	0	-	0	-
<b>1988 Total</b> .....	17,490	2.71	0	-	0	-
<b>1989 Total</b> .....	42,163	2.22	0	-	0	-
<b>1990 Total</b> .....	84,193	2.47	0	-	0	-
<b>1991 Total</b> .....	63,596	2.36	0	-	0	-
<b>1992 Total</b> .....	43,116	2.54	0	-	0	-
<b>1993 Total</b> .....	81,685	2.20	0	-	0	-
<b>1994 Total</b> .....	50,778	2.28	0	-	0	-
<b>1995 Total</b> .....	17,918	2.30	0	-	0	-
<b>1996 Total</b> .....	35,325	2.70	0	-	0	-
<b>1997 Total</b> .....	65,675	2.67	9,686	2.92	0	-
<b>1998</b>						
January .....	10,105	2.51	0	-	0	-
February .....	7,606	2.51	2,171	3.99	0	-
March .....	5,166	2.50	0	-	0	-
April .....	2,549	2.52	0	-	0	-
May .....	7,596	2.51	0	-	0	-
June .....	5,149	2.51	2,441	2.91	0	-
July .....	5,086	2.52	0	-	0	-
August .....	2,540	2.52	2,321	2.92	0	-
September .....	5,133	2.52	0	-	0	-
October .....	5,023	2.50	0	-	0	-
November .....	5,042	2.51	2,353	3.55	0	-
December .....	7,572	2.51	2,348	3.18	0	-
<b>Total</b> .....	68,567	2.51	11,634	3.30	0	-
<b>1999</b>						
January .....	13,066	2.42	0	-	0	-
February .....	7,684	2.51	2,557	3.55	0	-
March .....	13,090	2.44	0	-	0	-
April .....	7,637	2.35	0	-	0	-
May .....	3,898	2.13	0	-	5,493	1.88
June .....	2,528	2.17	2,314	2.33	6,619	2.08
July .....	5,134	2.18	0	-	6,599	2.11
August .....	2,554	2.17	2,302	2.37	9,904	2.33
September .....	7,593	2.49	0	-	4,393	2.55
October .....	5,118	2.48	2,309	2.42	5,865	2.57
November .....	2,440	2.85	0	-	6,648	2.85
December .....	5,021	2.51	2,422	2.76	5,256	2.83
<b>Total</b> .....	75,763	2.41	11,904	2.70	50,777	2.39

See footnotes at end of table.

**Table SR7. Summary of U.S. Natural Gas Imports, 1978-1999**  
(Volumes in Million Cubic Feet; Average Prices in Dollars per Thousand Cubic Feet) —  
Continued

Year and Month	LNG						Total LNG		Grand Total	
	Qatar		United Arab Emirates		Other		Volume	Average Price	Volume	Average Price
	Volume	Average Price	Volume	Average Price	Volume	Average Price				
<b>1978 Total</b> .....	0	-	0	-	0	-	84,422	1.53	965,545	2.13
<b>1979 Total</b> .....	0	-	0	-	0	-	252,608	2.03	1,253,383	2.49
<b>1980 Total</b> .....	0	-	0	-	0	-	85,850	3.77	984,767	4.28
<b>1981 Total</b> .....	0	-	0	-	6	6.63	36,830	5.54	903,949	4.88
<b>1982 Total</b> .....	0	-	0	-	0	-	55,136	5.82	933,336	5.03
<b>1983 Total</b> .....	0	-	0	-	0	-	131,124	6.41	918,407	4.78
<b>1984 Total</b> .....	0	-	0	-	0	-	36,191	4.90	843,060	4.08
<b>1985 Total</b> .....	0	-	0	-	0	-	23,659	4.60	949,715	3.21
<b>1986 Total</b> .....	0	-	0	-	<sup>a</sup> 1,669	4.62	1,669	4.62	750,449	2.43
<b>1987 Total</b> .....	0	-	0	-	0	-	0	0	992,532	1.95
<b>1988 Total</b> .....	0	-	0	-	0	-	17,490	2.71	1,293,812	1.84
<b>1989 Total</b> .....	0	-	0	-	0	-	42,163	2.22	1,381,520	1.82
<b>1990 Total</b> .....	0	-	0	-	0	-	84,193	2.47	1,532,259	1.94
<b>1991 Total</b> .....	0	-	0	-	0	-	63,596	2.36	1,773,313	1.83
<b>1992 Total</b> .....	0	-	0	-	0	-	43,116	2.54	2,137,504	1.85
<b>1993 Total</b> .....	0	-	0	-	0	-	81,685	2.20	2,350,115	2.03
<b>1994 Total</b> .....	0	-	0	-	0	-	50,778	2.28	2,623,839	1.87
<b>1995 Total</b> .....	0	-	0	-	0	-	17,918	2.30	2,841,048	1.49
<b>1996 Total</b> .....	0	-	4,949	3.46	0	-	40,274	2.79	2,937,413	1.97
<b>1997 Total</b> .....	0	-	2,417	3.74	0	-	77,778	2.73	2,994,173	2.17
<b>1998</b>										
January .....	0	-	0	-	0	-	10,105	2.51	286,278	2.08
February .....	0	-	0	-	0	-	9,777	2.84	251,052	1.94
March .....	0	-	0	-	0	-	5,166	2.50	263,032	1.98
April .....	0	-	0	-	0	-	2,549	2.52	253,161	2.04
May .....	0	-	0	-	0	-	7,596	2.51	252,310	2.02
June .....	0	-	0	-	0	-	7,590	2.64	243,442	1.88
July .....	0	-	0	-	0	-	5,086	2.52	266,319	1.97
August .....	0	-	0	-	0	-	4,861	2.71	274,809	1.82
September .....	0	-	0	-	0	-	5,133	2.52	262,142	1.68
October .....	0	-	0	-	0	-	5,023	2.50	266,063	1.93
November .....	0	-	2,667	2.78	0	-	10,062	2.82	258,033	2.12
December .....	0	-	2,585	2.47	0	-	12,505	2.63	275,417	2.16
<b>Total</b> .....	0	-	5,252	2.63	0	-	85,453	2.62	3,152,058	1.97
<b>1999</b>										
January .....	0	-	0	-	0	-	13,066	2.42	310,790	2.03
February .....	2,647	2.72	0	-	0	-	12,888	2.76	286,412	1.93
March .....	0	-	0	-	0	-	13,090	2.44	301,610	1.80
April .....	2,492	1.91	0	-	0	-	10,129	2.24	271,387	1.85
May .....	0	-	0	-	0	-	9,391	1.98	291,454	2.17
June .....	2,417	1.94	0	-	0	-	13,878	2.11	279,096	2.13
July .....	2,388	2.61	0	-	0	-	14,121	2.22	296,422	2.18
August .....	0	-	0	-	<sup>b</sup> 2,576	2.36	17,336	2.32	312,081	2.39
September .....	4,987	2.74	0	-	0	-	16,973	2.58	302,414	2.63
October .....	0	-	0	-	0	-	13,292	2.51	304,637	2.50
November .....	2,374	3.45	2,713	3.03	0	-	14,175	2.98	305,152	2.85
December .....	2,392	3.59	0	-	0	-	15,091	2.83	324,050	2.34
<b>Total</b> .....	19,697	2.71	2,713	3.03	<sup>b</sup> 2,576	2.36	163,430	2.47	3,585,505	2.24

<sup>a</sup> Received from Indonesia.

<sup>b</sup> Received from Malaysia.

- Not Applicable.

**Notes:** Totals may not equal sum of components due to independent rounding. Geographic coverage is the continental United States including Alaska. Prices for LNG imports are reported as "landed," defined as received at the terminal or "tailgate," defined as after regasification at the terminal. Generally, prices for shipments received at Everett, MA are reported as landed and at Lake Charles, LA as tailgate. For 1998 and 1999, the percentages of volumes associated with the

type of price are: **Algeria**-1998, 55 percent landed, 45 percent tailgate; 1999, 56 percent landed, 44 percent tailgate. **Australia**-1998, 39 percent landed, 61 percent tailgate; 1999, 21 percent landed, 79 percent tailgate. **Trinidad**-1999, 100 percent landed. **Qatar**-1999, 100 percent tailgate. **United Arab Emirates**-1998, nearly 100 percent tailgate; 1999, 100 percent landed. **Malaysia**-1999, 100 percent landed.

**Sources:** 1994 and Earlier Years: Energy Information Administration, Form FPC-14, "Annual Report for Importers and Exporters of Natural Gas." 1995 to 1999: Office of Fossil Energy, U.S. Department of Energy, *Natural Gas Imports and Exports*.

**Table SR8. U.S. Natural Gas Exports by Point of Exit, 1998-1999**

(Volumes in Million Cubic Feet; Average Prices in Dollars per Thousand Cubic Feet)

Year and Month	Canada (Pipeline)									
	Detroit, MI		Harve, MT		Marysville, MI		St Clair, MI		Sumas, WA	
	Volume	Average Price	Volume	Average Price	Volume	Average Price	Volume	Average Price	Volume	Average Price
<b>1998</b>										
January .....	2,490	2.84	0	-	493	2.15	1,947	2.23	0	-
February .....	1,904	2.17	0	-	729	2.02	1,869	2.08	0	-
March .....	3,917	2.19	0	-	807	2.23	3,127	2.33	0	-
April .....	3,358	2.50	0	-	479	2.24	671	2.47	0	-
May .....	1,860	2.29	0	-	0	-	223	2.21	0	-
June .....	1,900	2.03	0	-	0	-	38	2.14	0	-
July .....	1,240	2.07	0	-	0	-	394	1.66	0	-
August .....	0	-	0	-	0	-	52	1.87	0	-
September ..	1,481	2.09	0	-	0	-	0	-	0	-
October .....	1,380	2.01	0	-	0	-	703	2.07	44	1.80
November ...	2,543	2.12	0	-	60	2.44	878	2.27	150	2.24
December ...	2,835	2.19	0	-	808	2.19	1,494	2.36	14	11.82
<b>Total .....</b>	<b>24,908</b>	<b>2.26</b>	<b>0</b>	<b>-</b>	<b>3,377</b>	<b>2.17</b>	<b>11,397</b>	<b>2.23</b>	<b>208</b>	<b>2.80</b>
<b>1999</b>										
January .....	1,814	1.93	58	1.90	0	-	392	1.90	0	-
February .....	1,639	1.93	96	1.55	0	-	829	1.97	0	-
March .....	3,145	1.80	36	1.61	0	-	1,313	1.80	0	-
April .....	1,743	1.77	144	1.80	0	-	359	1.95	0	-
May .....	1,801	2.28	134	1.60	0	-	277	2.45	0	-
June .....	1,743	2.15	180	1.99	0	-	30	2.43	0	-
July .....	1,801	2.22	186	1.94	0	-	0	-	0	-
August .....	1,801	2.45	217	2.08	0	-	0	-	0	-
September ..	1,764	2.85	195	2.37	0	-	0	-	0	-
October .....	1,907	2.61	260	2.56	0	-	172	2.97	0	-
November ...	2,979	2.96	0	-	366	2.43	4,673	2.99	0	-
December ...	2,912	2.42	4	2.02	325	2.50	3,213	2.35	0	-
<b>Total .....</b>	<b>25,049</b>	<b>2.30</b>	<b>1,510</b>	<b>2.05</b>	<b>691</b>	<b>2.47</b>	<b>11,258</b>	<b>2.51</b>	<b>0</b>	<b>-</b>

See footnotes at end of table.

**Table SR8. U.S. Natural Gas Exports by Point of Exit, 1998-1999**  
(Volumes in Million Cubic Feet; Average Prices in Dollars per Thousand Cubic Feet) — Continued

Year and Month	Canada (Pipeline)		Mexico (Pipeline)							
	Total		Calexico, CA		Clint, TX		Douglas, AZ		Eagle Pass, TX	
	Volume	Average Price	Volume	Average Price	Volume	Average Price	Volume	Average Price	Volume	Average Price
<b>1998</b>										
January .....	4,930	2.53	160	2.71	2,145	2.11	380	2.03	140	2.37
February .....	4,502	2.11	125	2.45	1,489	2.05	400	1.89	124	2.15
March .....	7,851	2.25	139	2.62	1,986	2.08	336	2.02	124	2.39
April .....	4,509	2.47	143	2.73	1,770	2.18	255	2.10	108	2.46
May .....	2,083	2.28	141	2.75	2,610	2.09	438	1.97	106	2.45
June .....	1,938	2.03	132	2.42	2,818	1.86	656	1.78	99	2.20
July .....	1,634	1.97	148	2.56	2,530	2.21	329	1.87	102	2.53
August .....	52	1.87	171	2.64	2,842	1.94	355	1.80	101	2.11
September ..	1,481	2.09	209	2.36	1,970	1.74	121	1.67	108	1.80
October .....	2,127	2.03	229	2.37	3,859	1.89	353	1.74	135	2.15
November ...	3,630	2.17	235	2.70	3,459	1.95	298	1.94	146	2.12
December ...	5,152	2.26	237	2.66	3,404	1.94	212	1.92	177	2.23
<b>Total .....</b>	<b>39,891</b>	<b>2.25</b>	<b>2,067</b>	<b>2.58</b>	<b>30,880</b>	<b>1.99</b>	<b>4,133</b>	<b>1.89</b>	<b>1,471</b>	<b>2.24</b>
<b>1999</b>										
January .....	2,264	1.92	237	2.37	3,101	1.74	10	1.73	185	1.89
February .....	2,564	1.93	233	2.17	3,288	1.66	730	1.79	150	1.88
March .....	4,494	1.80	261	2.05	3,950	1.55	146	1.56	179	1.78
April .....	2,246	1.80	282	2.10	3,334	1.74	181	2.03	162	1.95
May .....	2,212	2.26	350	2.54	4,859	2.21	300	2.47	162	2.44
June .....	1,953	2.14	340	2.53	3,928	2.26	427	2.44	158	2.33
July .....	1,987	2.19	338	2.69	3,743	2.26	403	2.50	157	2.38
August .....	2,018	2.41	342	2.91	3,717	2.65	371	2.93	145	2.71
September ..	1,959	2.80	337	3.25	3,663	2.88	286	2.90	151	3.00
October .....	2,339	2.63	379	3.03	2,412	2.61	384	2.59	173	2.64
November ...	8,018	2.95	342	3.43	3,581	2.84	338	2.59	174	3.13
December ...	6,454	2.39	283	2.72	2,791	2.21	465	2.30	194	2.22
<b>Total .....</b>	<b>38,508</b>	<b>2.35</b>	<b>3,724</b>	<b>2.69</b>	<b>42,367</b>	<b>2.22</b>	<b>4,041</b>	<b>2.37</b>	<b>1,990</b>	<b>2.35</b>

See footnotes at end of table.



**Table SR8. U.S. Natural Gas Exports by Point of Exit, 1998-1999**  
(Volumes in Million Cubic Feet; Average Prices in Dollars per  
Thousand Cubic Feet) — Continued

Year and Month	Mexico (Pipeline)								Japan (LNG)
	El Paso, TX		Hidalgo, TX		Penitas, TX		Total		Kenai, AK
	Volume	Average Price	Volume	Average Price	Volume	Average Price	Volume	Average Price	Volume
<b>1998</b>									
January .....	418	2.08	531	2.07	484	1.99	4,257	2.11	0
February .....	900	2.07	40	2.40	40	1.98	3,117	2.06	0
March .....	677	2.26	544	2.13	396	2.12	4,202	2.14	0
April .....	399	2.27	0	-	0	-	2,675	2.23	0
May .....	759	2.13	2,064	2.14	0	-	6,119	2.12	0
June .....	407	1.86	1,259	2.28	246	2.34	5,617	1.98	0
July .....	53	2.35	689	2.18	0	-	3,852	2.20	0
August .....	1,154	1.93	211	1.82	0	-	4,834	1.95	0
September ..	484	1.93	0	-	0	-	2,892	1.81	0
October .....	425	1.96	126	1.77	40	1.64	5,167	1.91	0
November ...	599	2.07	341	1.90	0	-	5,079	2.00	0
December ...	1,082	1.99	211	1.95	0	-	5,323	1.99	0
<b>Total .....</b>	<b>7,358</b>	<b>2.05</b>	<b>6,017</b>	<b>2.13</b>	<b>1,206</b>	<b>2.09</b>	<b>53,133</b>	<b>2.04</b>	<b>0</b>
<b>1999</b>									
January .....	993	1.91	0	-	0	-	4,526	1.81	5,586
February .....	376	1.81	0	-	0	-	4,777	1.72	5,564
March .....	0	-	1,414	1.72	0	-	5,950	1.62	5,570
April .....	392	1.96	698	2.24	0	-	5,049	1.87	5,687
May .....	437	2.47	0	-	0	-	6,108	2.27	5,644
June .....	362	2.30	63	2.22	0	-	5,278	2.29	3,754
July .....	631	2.31	340	2.31	0	-	5,612	2.31	5,675
August .....	823	2.72	0	-	0	-	5,398	2.70	5,643
September ..	830	2.76	0	-	0	-	5,267	2.89	5,605
October .....	496	2.75	242	2.85	0	-	4,086	2.68	3,723
November ...	566	3.02	0	-	0	-	5,001	2.89	5,579
December ...	240	2.53	0	-	0	-	3,973	2.28	5,577
<b>Total .....</b>	<b>6,146</b>	<b>2.43</b>	<b>2,757</b>	<b>2.04</b>	<b>0</b>	<b>-</b>	<b>61,025</b>	<b>2.27</b>	<b>63,607</b>

See footnotes at end of table.

**Table SR8. U.S. Natural Gas Exports by Point of Exit, 1998-1999**  
(Volumes in Million Cubic Feet; Average Prices in Dollars per  
Thousand Cubic Feet) — Continued

Year and Month	Japan (LNG)			Mexico (LNG)				Grand Total	
	Kenai, AK	Port Nikiski, AK		Nogales, AZ		San Diego, CA		Volume	Average Price
	Average Price	Volume	Average Price	Volume	Average Price	Volume	Average Price		
<b>1998</b>									
January .....	-	7,446	3.67	0	-	0	-	16,632	2.93
February .....	-	3,726	3.42	0	-	0	-	11,346	2.53
March .....	-	7,435	3.09	0	-	0	-	19,488	2.55
April .....	-	5,702	2.81	0	-	0	-	12,886	2.57
May .....	-	1,891	2.70	0	-	0	-	10,093	2.26
June .....	-	5,695	2.69	0	-	0	-	13,250	2.29
July .....	-	5,679	2.70	0	-	0	-	11,166	2.42
August .....	-	5,676	2.70	1	5.88	0	-	10,563	2.35
September ..	-	7,584	2.68	0	-	0	-	11,957	2.40
October .....	-	5,679	2.72	3	5.74	0	-	12,975	2.28
November ...	-	3,776	2.75	9	5.69	0	-	12,494	2.28
December ...	-	5,662	2.73	20	5.68	0	-	16,157	2.34
<b>Total .....</b>	-	65,951	2.91	33	5.69	0	-	159,007	2.45
<b>1999</b>									
January .....	2.95	0	-	23	7.41	1	7.49	12,400	2.36
February .....	2.94	0	-	28	7.38	1	7.49	12,934	2.30
March .....	2.88	0	-	19	7.31	2	7.49	16,035	2.11
April .....	2.77	0	-	17	7.09	2	7.49	13,001	2.26
May .....	2.78	0	-	21	7.41	3	7.49	13,988	2.48
June .....	2.77	0	-	15	7.23	3	7.49	11,003	2.44
July .....	2.88	0	-	20	7.14	0	-	13,294	2.54
August .....	3.11	0	-	17	7.34	3	7.49	13,079	2.84
September ..	3.23	0	-	21	7.26	0	-	12,852	3.03
October .....	3.28	0	-	13	7.07	0	-	10,161	2.89
November ...	3.56	0	-	22	5.86	8	5.82	18,628	3.12
December ...	3.81	0	-	22	5.82	14	5.82	16,040	2.86
<b>Total .....</b>	3.08	0	-	238	7.01	37	6.50	163,415	2.61

- Not Applicable.

**Notes:** Totals may not equal sum of components due to independent rounding. Geographic coverage is the continental United States including Alaska. The price of

LNG exports to Japan is the "landed" price, defined as received at the terminal in Japan.

**Sources:** Office of Fossil Energy, U.S. Department of Energy, *Natural Gas Imports and Exports*.

**Table SR9. Summary of U.S. Natural Gas Exports, 1978-1999**  
(Volumes in Million Cubic Feet; Average Prices in Dollars per Thousand Cubic Feet)

Year and Month	Pipeline				Total Pipeline		LNG				Grand Total	
	Canada		Mexico		Volume	Average Price	Japan		Mexico		Volume	Average Price
	Volume	Average Price	Volume	Average Price			Volume	Average Price	Volume	Average Price		
<b>1978 Total</b> .....	66	1.79	4,033	1.65	4,098	1.66	48,434	2.17	0	-	52,532	2.13
<b>1979 Total</b> .....	76	2.04	4,308	1.97	4,384	1.97	51,289	2.32	0	-	55,673	2.29
<b>1980 Total</b> .....	113	3.31	3,886	2.47	3,999	2.50	44,732	4.90	0	-	48,731	4.70
<b>1981 Total</b> .....	106	4.79	3,337	3.37	3,443	3.41	55,929	6.05	0	-	59,372	5.90
<b>1982 Total</b> .....	162	4.95	1,705	5.17	1,867	5.15	49,861	5.83	0	-	51,728	5.81
<b>1983 Total</b> .....	136	4.60	1,646	4.79	1,782	4.78	52,857	5.11	0	-	54,639	5.10
<b>1984 Total</b> .....	127	4.19	1,786	4.48	1,913	4.46	52,840	4.93	0	-	54,753	4.92
<b>1985 Total</b> .....	178	3.06	2,207	3.99	2,385	3.92	52,883	4.81	0	-	55,268	4.77
<b>1986 Total</b> .....	9,203	2.12	1,896	3.49	11,099	2.35	50,172	2.91	0	-	61,271	2.81
<b>1987 Total</b> .....	3,297	1.81	2,125	3.18	5,421	2.35	48,599	3.15	0	-	54,020	3.07
<b>1988 Total</b> .....	19,738	2.02	2,327	3.21	22,065	2.14	51,573	2.99	0	-	73,638	2.74
<b>1989 Total</b> .....	38,443	2.00	17,004	2.14	55,447	2.05	51,424	3.01	0	-	106,871	2.51
<b>1990 Total</b> .....	17,359	2.70	15,659	1.88	33,018	2.31	52,546	3.59	0	-	85,565	3.10
<b>1991 Total</b> .....	14,791	1.91	60,448	1.76	75,239	1.79	54,005	3.71	0	-	129,244	2.59
<b>1992 Total</b> .....	67,777	1.83	95,973	1.90	163,750	1.88	52,532	3.43	0	-	216,282	2.25
<b>1993 Total</b> .....	44,518	2.14	39,676	2.02	84,195	2.08	55,989	3.34	0	-	140,183	2.59
<b>1994 Total</b> .....	52,556	2.42	46,500	1.68	99,057	2.08	62,682	3.18	0	-	161,738	2.50
<b>1995 Total</b> .....	27,554	1.96	61,283	1.50	88,836	1.64	65,283	3.41	0	-	154,119	2.39
<b>1996 Total</b> .....	51,905	2.67	33,840	2.11	85,745	2.45	67,648	3.65	0	-	153,393	2.97
<b>1997 Total</b> .....	56,447	2.52	38,372	2.46	94,818	2.49	62,187	3.83	0	-	157,006	3.02
<b>1998</b>												
January .....	4,930	2.53	4,257	2.11	9,187	2.34	7,446	3.67	0	-	16,632	2.93
February .....	4,502	2.11	3,117	2.06	7,619	2.09	3,726	3.42	0	-	11,346	2.53
March .....	7,851	2.25	4,202	2.14	12,054	2.21	7,435	3.09	0	-	19,488	2.55
April .....	4,509	2.47	2,675	2.23	7,184	2.38	5,702	2.81	0	-	12,886	2.57
May .....	2,083	2.28	6,119	2.12	8,202	2.16	1,891	2.70	0	-	10,093	2.26
June .....	1,938	2.03	5,617	1.98	7,555	2.00	5,695	2.69	0	-	13,250	2.29
July .....	1,634	1.97	3,852	2.20	5,487	2.13	5,679	2.70	0	-	11,166	2.42
August .....	52	1.87	4,834	1.95	4,886	1.95	5,676	2.70	1	5.88	10,563	2.35
September .....	1,481	2.09	2,892	1.81	4,373	1.91	7,584	2.68	0	-	11,957	2.40
October .....	2,127	2.03	5,167	1.90	7,294	1.94	5,679	2.72	3	5.74	12,975	2.28
November .....	3,630	2.17	5,079	2.00	8,709	2.07	3,776	2.75	9	5.69	12,494	2.28
December .....	5,152	2.26	5,323	1.99	10,475	2.12	5,662	2.73	20	5.68	16,157	2.34
<b>Total</b> .....	39,891	2.25	53,133	2.04	93,023	2.13	65,951	2.91	33	5.69	159,007	2.45
<b>1999</b>												
January .....	2,264	1.92	4,526	1.81	6,790	1.85	5,586	2.95	24	7.41	12,400	2.36
February .....	2,564	1.93	4,777	1.72	7,341	1.79	5,564	2.94	29	7.39	12,934	2.30
March .....	4,494	1.80	5,950	1.62	10,444	1.70	5,570	2.88	21	7.33	16,035	2.11
April .....	2,246	1.80	5,049	1.87	7,295	1.85	5,687	2.77	19	7.13	13,001	2.26
May .....	2,212	2.26	6,108	2.27	8,320	2.27	5,644	2.78	24	7.42	13,988	2.48
June .....	1,953	2.14	5,278	2.29	7,231	2.25	3,754	2.77	18	7.28	11,003	2.44
July .....	1,987	2.19	5,612	2.31	7,599	2.28	5,675	2.88	20	7.14	13,294	2.54
August .....	2,018	2.41	5,398	2.70	7,416	2.62	5,643	3.11	20	7.36	13,079	2.84
September .....	1,959	2.80	5,267	2.89	7,226	2.87	5,605	3.23	21	7.26	12,852	3.03
October .....	2,339	2.63	4,086	2.68	6,425	2.66	3,723	3.28	13	7.07	10,161	2.89
November .....	8,018	2.95	5,001	2.89	13,019	2.93	5,579	3.56	30	5.85	18,628	3.12
December .....	6,454	2.39	3,973	2.28	10,427	2.35	5,577	3.81	36	5.82	16,040	2.86
<b>Total</b> .....	38,508	2.35	61,025	2.27	99,533	2.30	63,607	3.08	275	6.95	163,415	2.61

- Not Applicable.

**Notes:** Totals may not equal sum of components due to independent rounding. Geographic coverage is the continental United States including Alaska. The price of LNG exports to Japan is the "landed" price, defined as received at the terminal in Japan.

**Sources:** 1994 and Earlier Years: Energy Information Administration, Form FPC-14, "Annual Report for Importers and Exporters of Natural Gas." 1995 to 1999: Office of Fossil Energy, U.S. Department of Energy, *Natural Gas Imports and Exports*.