



Outlook for U.S. Petroleum and Biofuels

Tony Radich

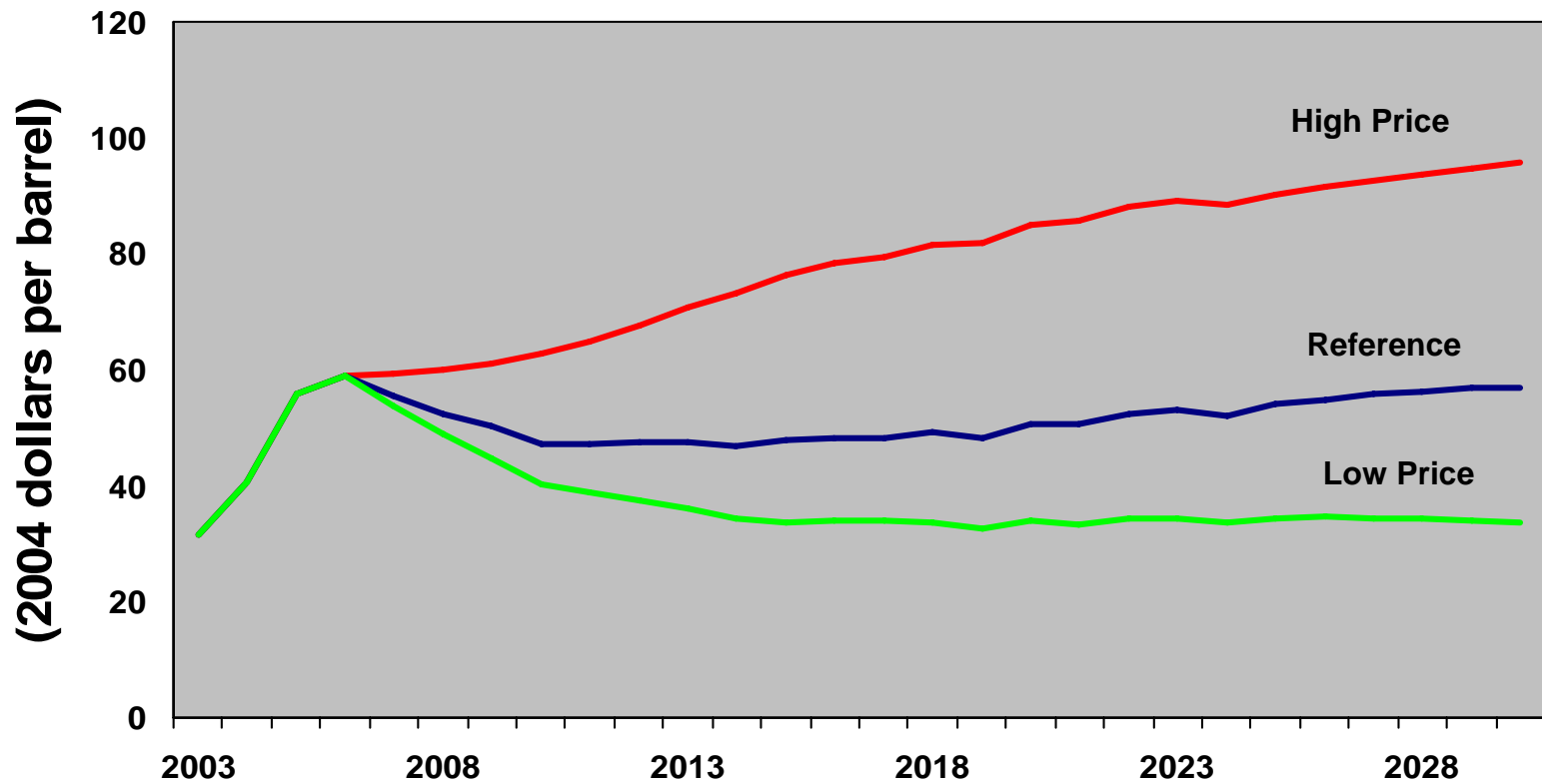
Energy Information Administration

Office of Integrated Analysis and Forecasting

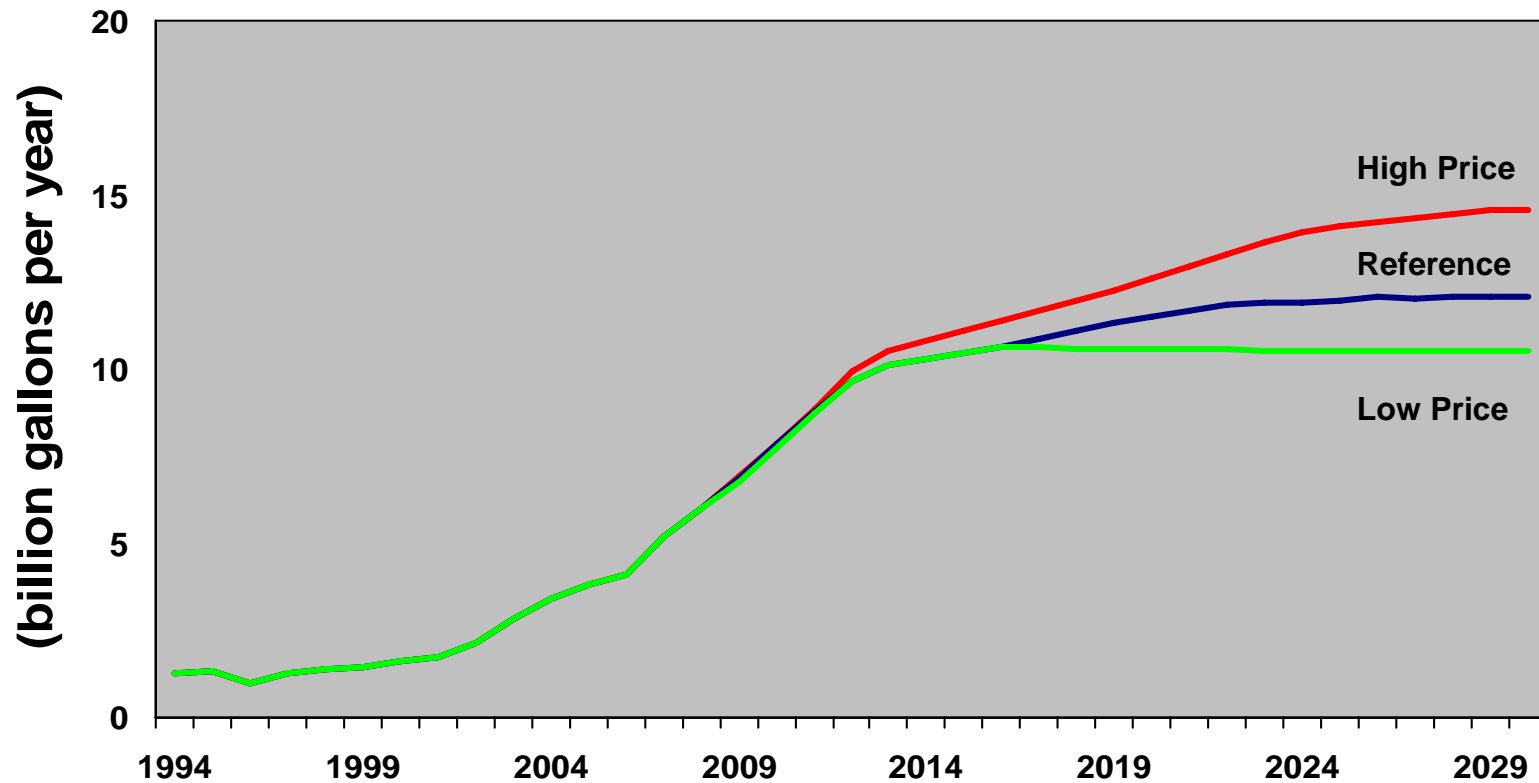
anthony.radich@eia.doe.gov

March 27, 2006

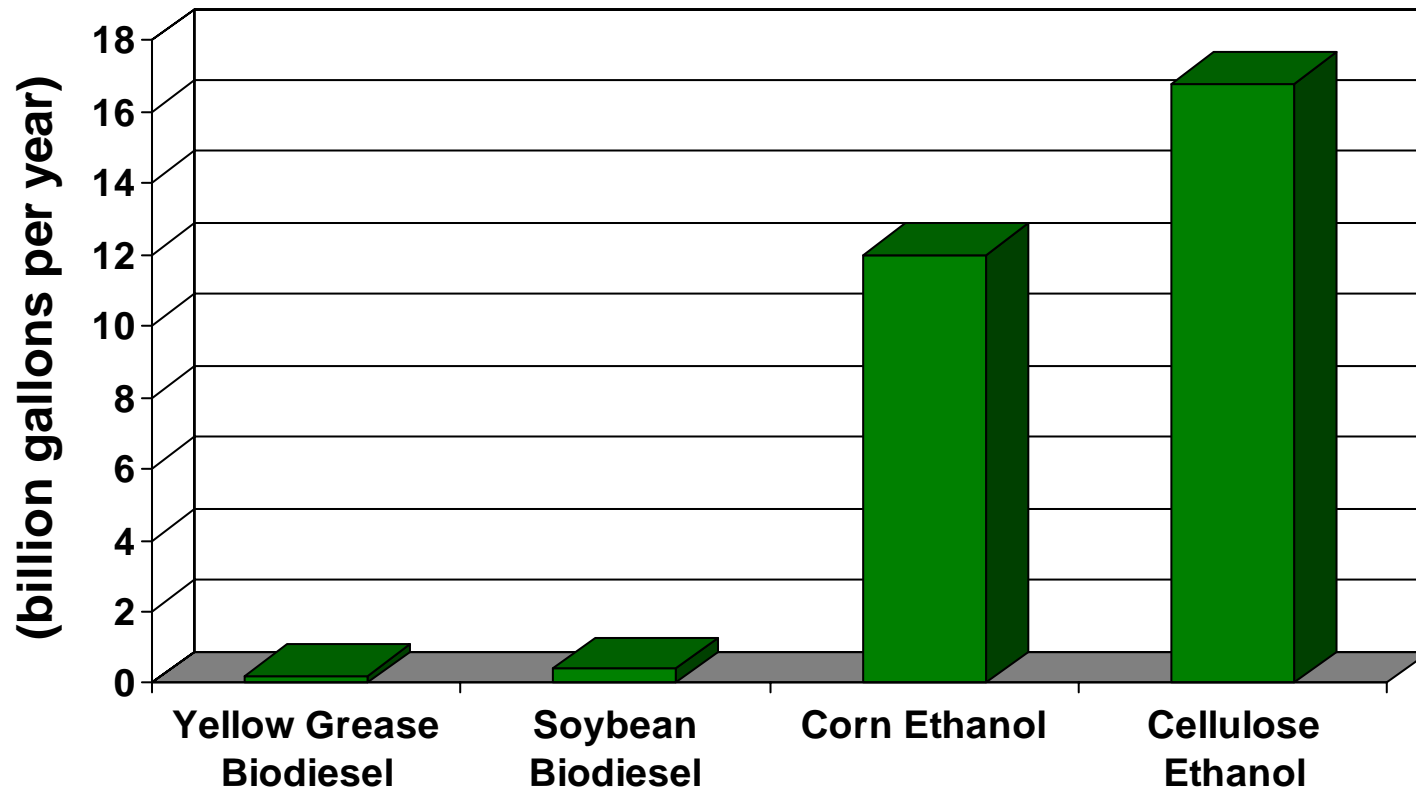
Foreign Low-Sulfur Light Crude Price Cases



U.S. Ethanol Use By Crude Oil Price Case (billion gallons per year)



Economic Potentials for Biofuels Production in AEO2006



Ethanol Cost by Technology, 2012 (2004 dollars)

	Corn Dry Mill	Cellulose
Raw Material	Corn	Crop Residue, Switchgrass
Co-product	Distillers' Dried Grains with Solubles	Electricity to Grid
Plant Size	50 million gallons per year	50 million gallons per year
Capital Cost	\$65 million	\$369 million
Raw Material Cost	\$0.90 per gallon	\$0.49 per gallon
Non-energy Operating Cost	\$0.25 per gallon	\$0.63 per gallon
Cost of Delivered Energy	\$0.21 per gallon	\$0
Co-product Value	-\$0.16 per gallon	-\$0.12 per gallon
Variable Cost	\$1.20 per gallon	\$1.00 per gallon

Comparison: West North Central Division Ethanol Costs Including Tax Credit Versus Gasoline

