



## Winter Fuels Outlook: 2002-2003

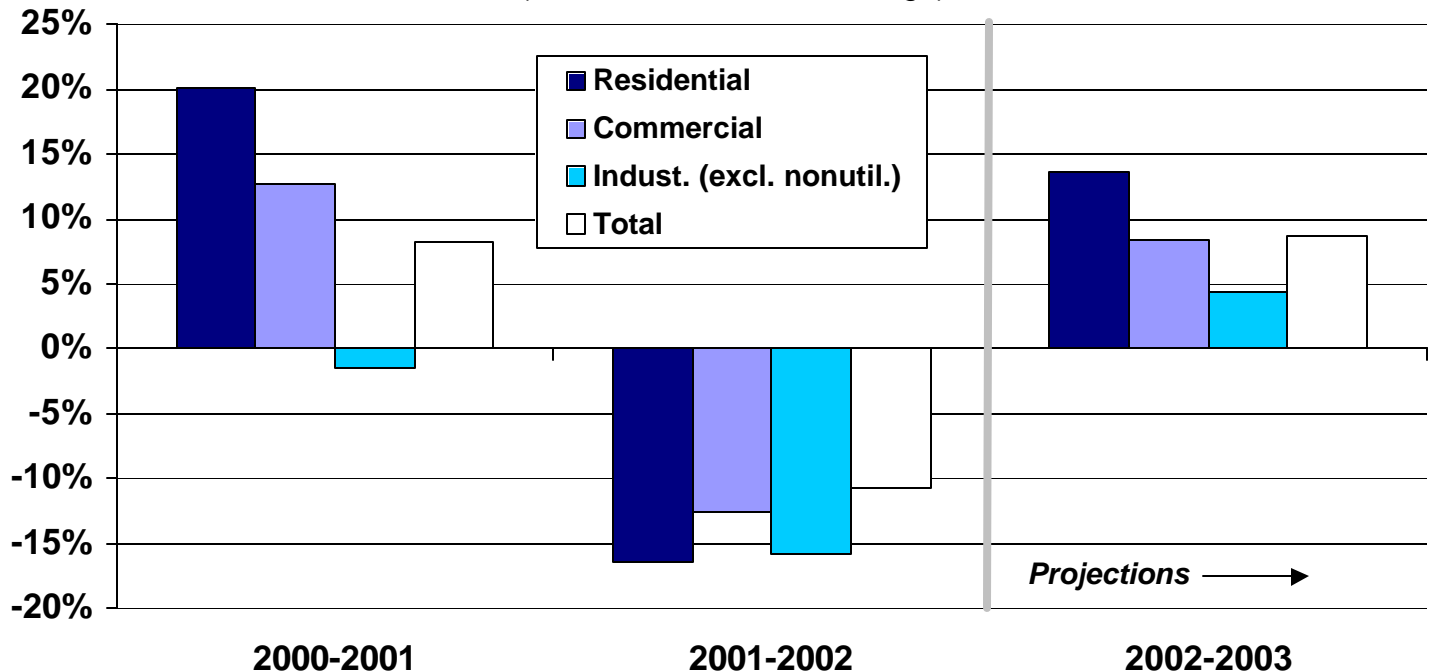
### Selected Table and Figure Updates Based on the December 2002 Short-Term Energy Outlook

**Table WF1. Illustrative Consumer Prices and Expenditures for Heating Fuels During the Winter**

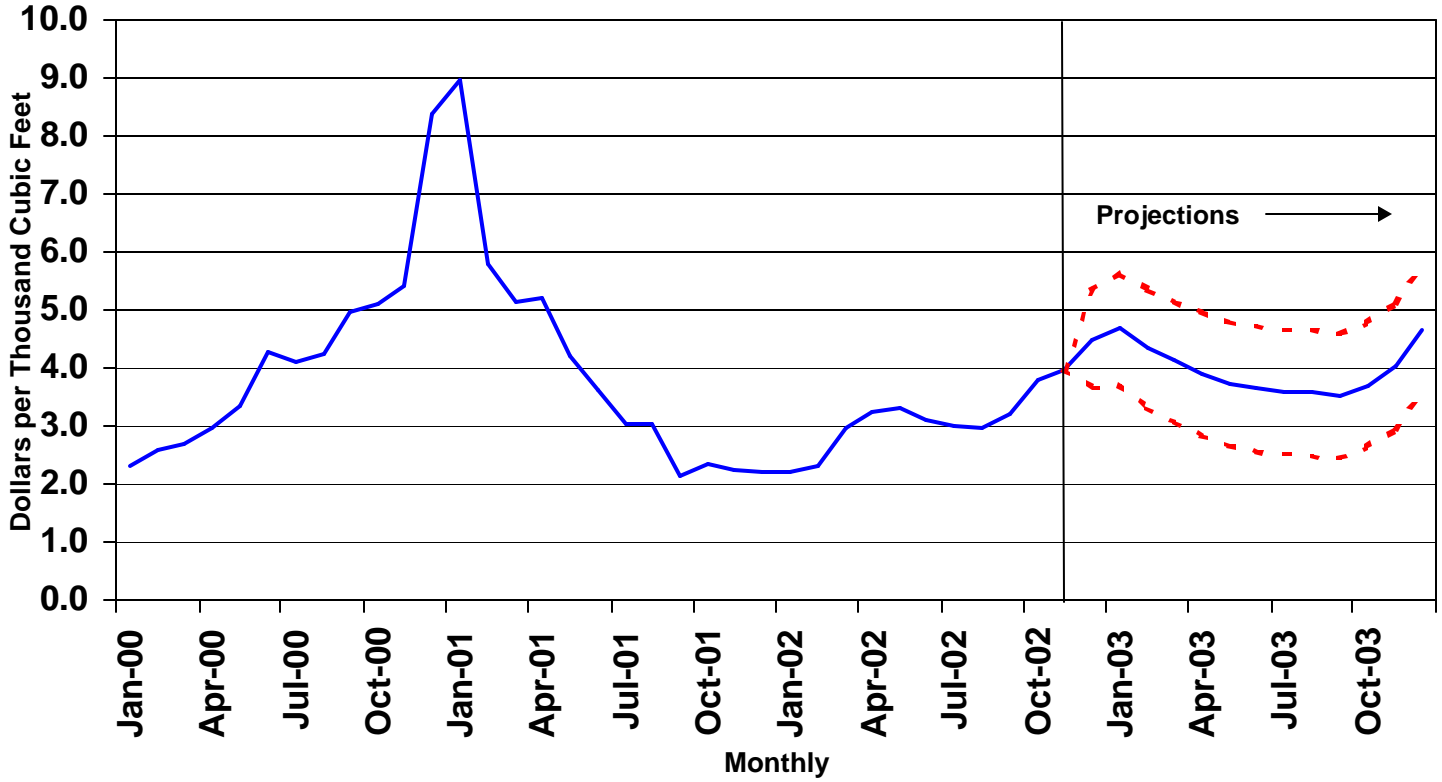
	1999-2000 Actual	2000-2001 Actual	2001-2002 Actual	2002-2003 Base Forecast
<b>Natural Gas (Midwest)</b>				
Consumption (mcf)	81.7	99.1	81.3	93.1
Avg. Price (\$/mcf)	6.69	9.54	7.34	8.38
Expenditures (\$)	546	945	597	780
<b>Heating Oil (Northeast)</b>				
Consumption (gals)	644	731	584	716
Avg. Price (\$/gal)	1.16	1.37	1.10	1.27
Expenditures (\$)	751	999	643	909
<b>Propane (Midwest)</b>				
Consumption (gals)	807	979	803	920
Avg. Price (\$/gal)	1.02	1.37	1.10	1.13
Expenditures (\$)	824	1344	887	1036

Notes: Consumption based on typical per household use for regions noted.  
 Prices shown are national average delivered-to-household prices.

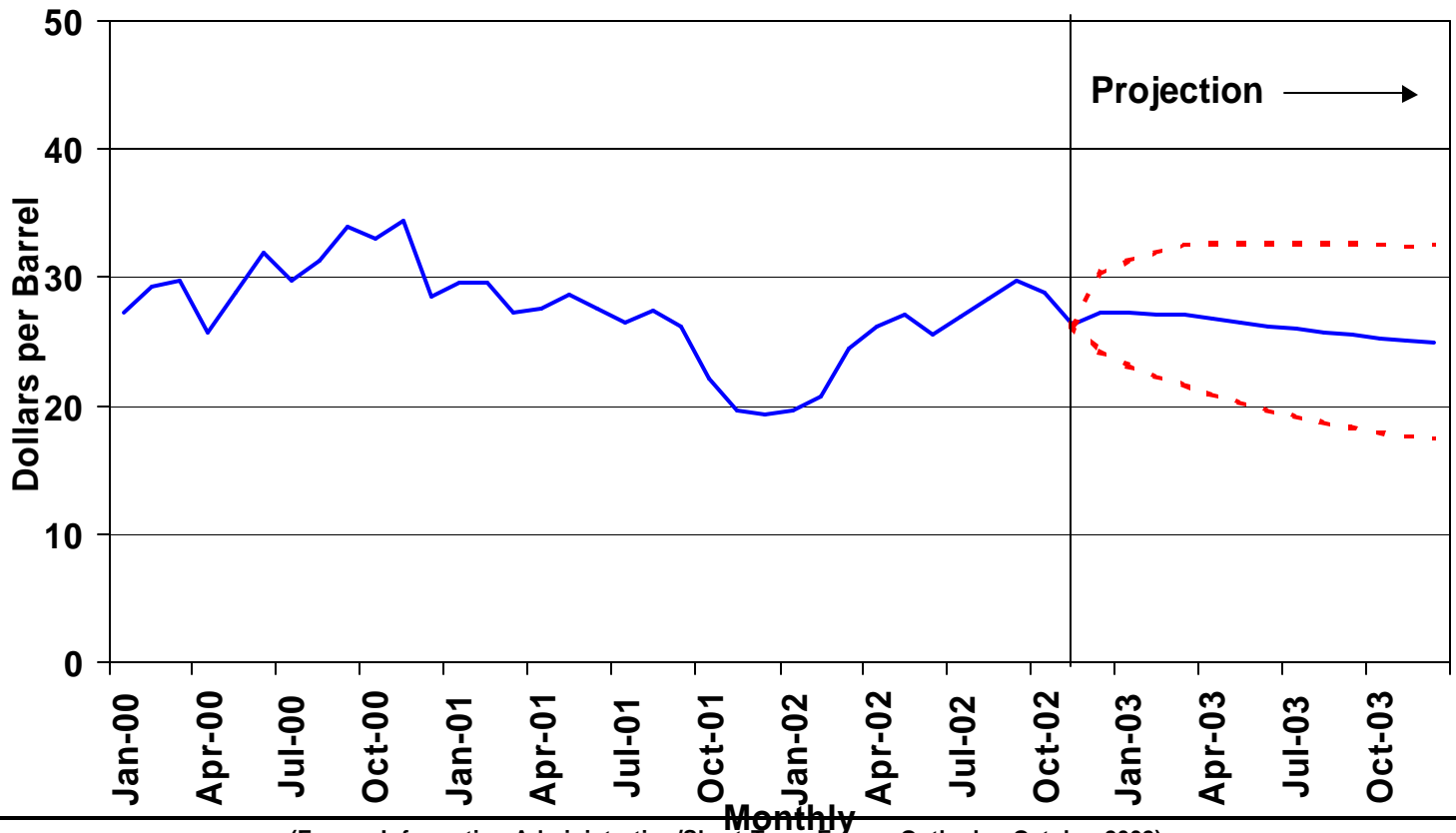
**Figure WF1. U.S. Winter Natural Gas Demand**  
 (Year-to-Year Percent Change)



**Figure WF3. Natural Gas Spot Wellhead Prices: Base Case and 95% Confidence Intervals**



**Figure WF5. WTI Crude Oil Price: Base Case and 95% Confidence Interval**



(Energy Information Administration/Short-Term Energy Outlook -- October 2002)

**Table WF3. 2002-2003 Winter Weather Scenarios: Warm, Normal (Base) and Cold Cases****(Illustrative Household Heating Demand and Costs)**

	<b>Warm</b>	<b>Base</b>	<b>Cold</b>	<b>% Diff. From Warm</b>	<b>Base Cold</b>
<b>Natural Gas (Midwest)</b>					
Consumption (mcf)	83.8	93.1	102.4	-10.0%	10.0%
Avg. Price (\$/mcf)	8.28	8.38	8.49	-1.2%	1.2%
Expenditures (\$)	694	780	869	-11.1%	11.3%
<b>Heating Oil (Northeast)</b>					
Consumption (gals)	644	716	787	-10.0%	10.0%
Avg. Price (\$/gal)	1.20	1.27	1.34	-5.6%	5.6%
Expenditures (\$)	772	909	1056	-15.0%	16.2%
<b>Propane (Midwest)</b>					
Consumption (gals)	828	920	1012	-10.0%	10.0%
Avg. Price (\$/gal)	1.09	1.13	1.16	-3.6%	3.2%
Expenditures (\$)	899	1036	1176	-13.2%	13.5%

Note: Scenarios involve assumptions of 10% greater and 10% lower heating degree-days in all regions.