

TRUEVIEW

VERMILION RIVER

Vermilion to Intracoastal City

Goat Island

Big Woods Island

Palmetto Island

Marklee Island

Peter Lee Island

Maple Island

Stump Island

Gum Island

es Island

TRUEVIEW

VERMILION RIVER

Northern Vermilion Parish

Perry

336

30113C

TRUEVIEW

VERMILION RIVER

Southwest Lafayette Parish

LA 733

Milton

Milton

92

733



Johnston St.

TRUEVIEW
VERMILION RIVER

Western Lafayette Parish

733

LA 733

Kaliste Saloom Rd.

Wimbath Drive
Acomb Drive
Chelsea Drive
Kimbberly Road
Goshen Drive
East Broussard
Vincet Road

TRUEVIEW

VERMILION RIVER

SW City of Lafayette

Ambassador Caffery

Settlers Trace Blvd.

Kaliste Saloom Rd.



TRUEVIEW

VERMILION RIVER

SW City of Lafayette

Ambassador Caffery

Kaliste Saloom Rd.

Verot School Road

LaNeuvillie Road

Vincent Road

330

Google

Image © 2008 DigitalGlobe

TRUEVIEW

VERMILION RIVER

City of Lafayette



TRUEVIEW

VERMILION RIVER

City of Lafayette

Highway 90

Vermilionville

Surrey St.

Image © 2009 DigitalGlobe

© 2009 Tele Atlas

Steering 100%

© 2007 Google

49° N 91° 59' 33" W

Eye alt



TRUEVIEW
VERMILION RIVER

Airport Swamp/Drainage

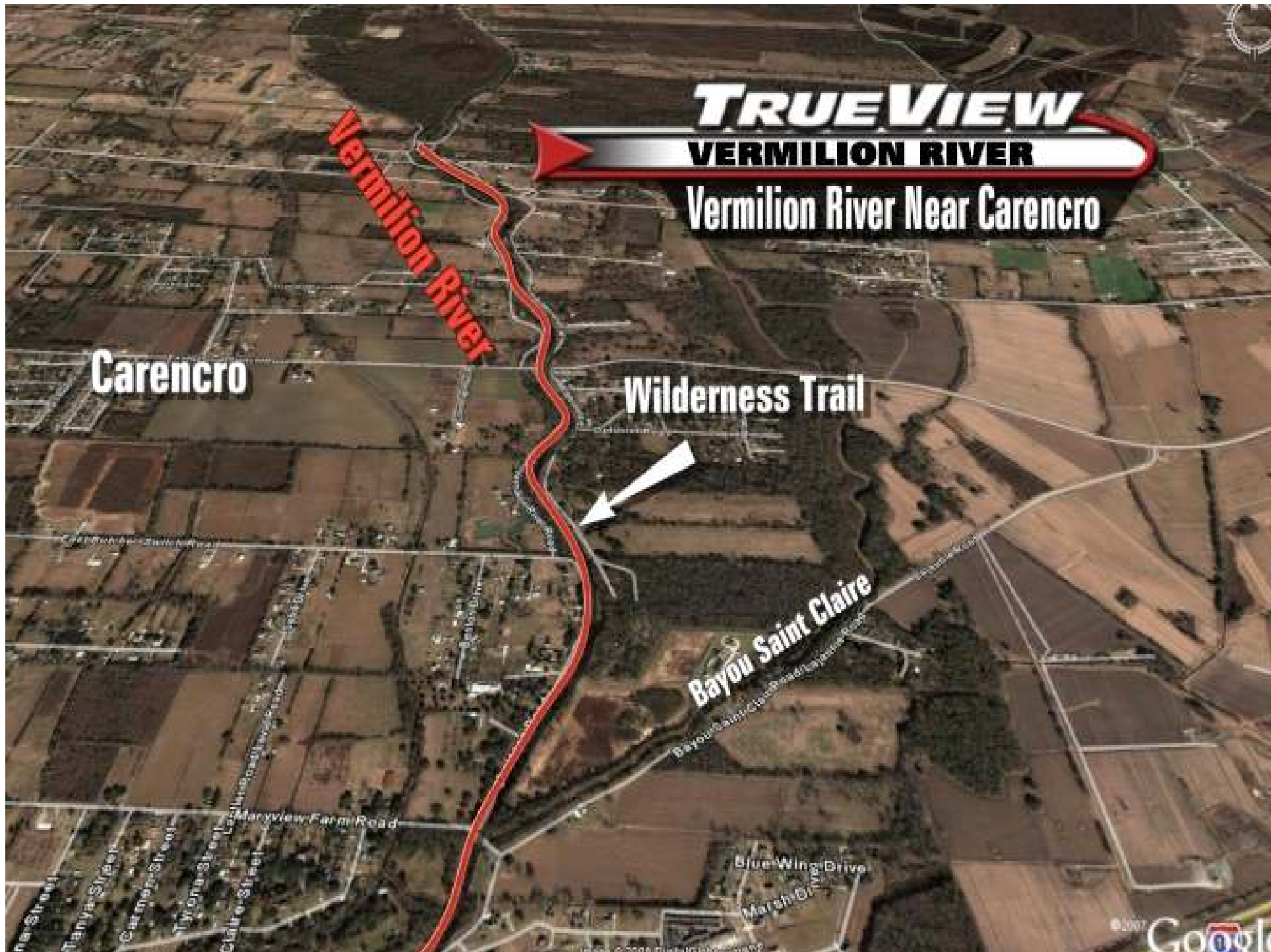
Vermilion River

Ruth Canal

LFT Regional

Marsh/Swamp

Highway 90



TRUEVIEW

VERMILION RIVER

Vermilion River Near Carencro

Vermilion River

Carencro

Wilderness Trail

Bayou Saint Claire

TRUEVIEW

LET/ST MARTIN ELEVATIONS

3 FT

6 FT

9 FT

12 FT

Cecilia

Breaux Bridge

Lafayette

Parks

Ridge

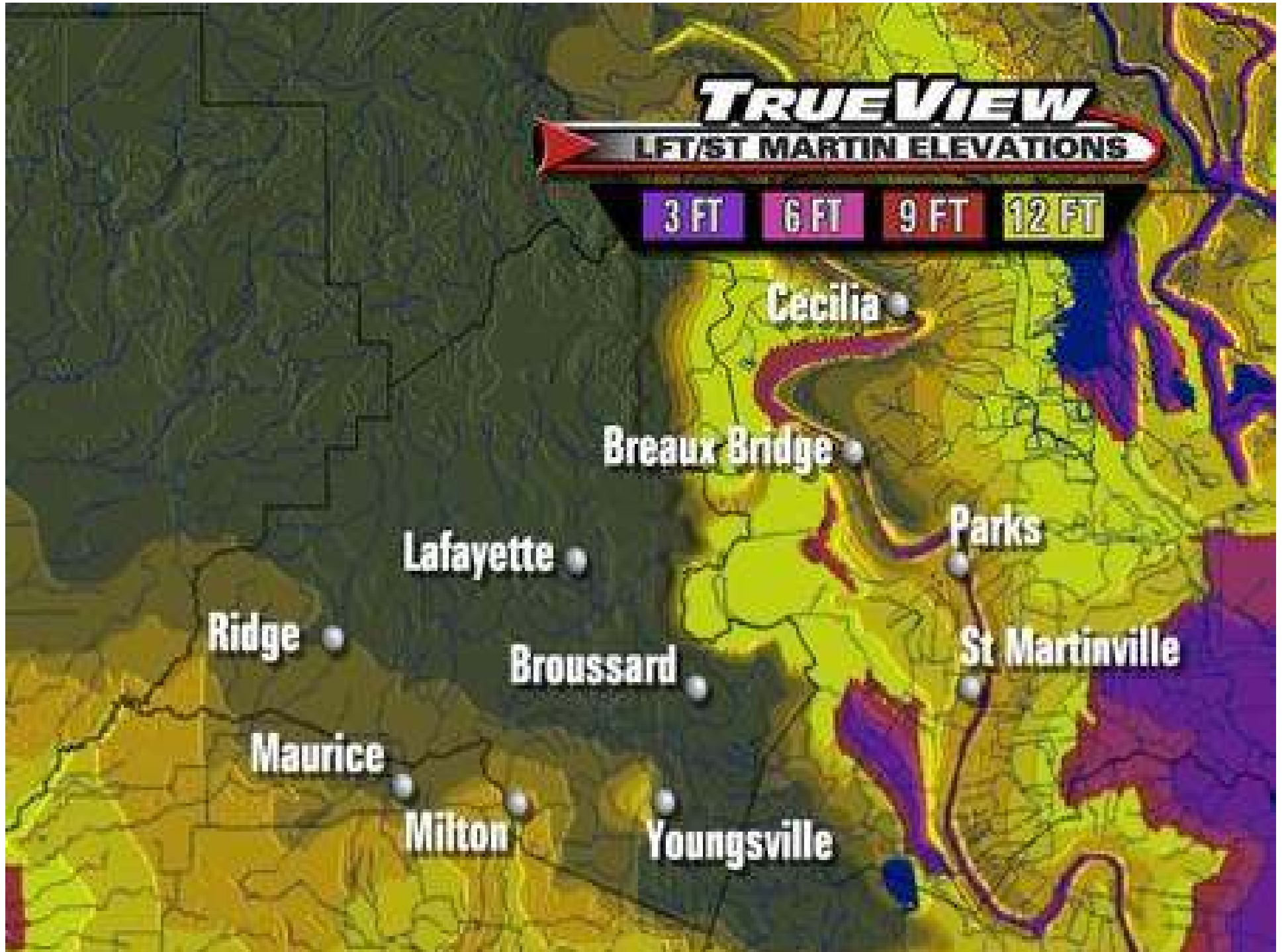
Broussard

St Martinville

Maurice

Milton

Youngsville



TRUEVIEW

VERMILION ELEVATIONS

3 FT

6 FT

9 FT

12 FT

Gueydan

Kaplan

Abbeville

Erath

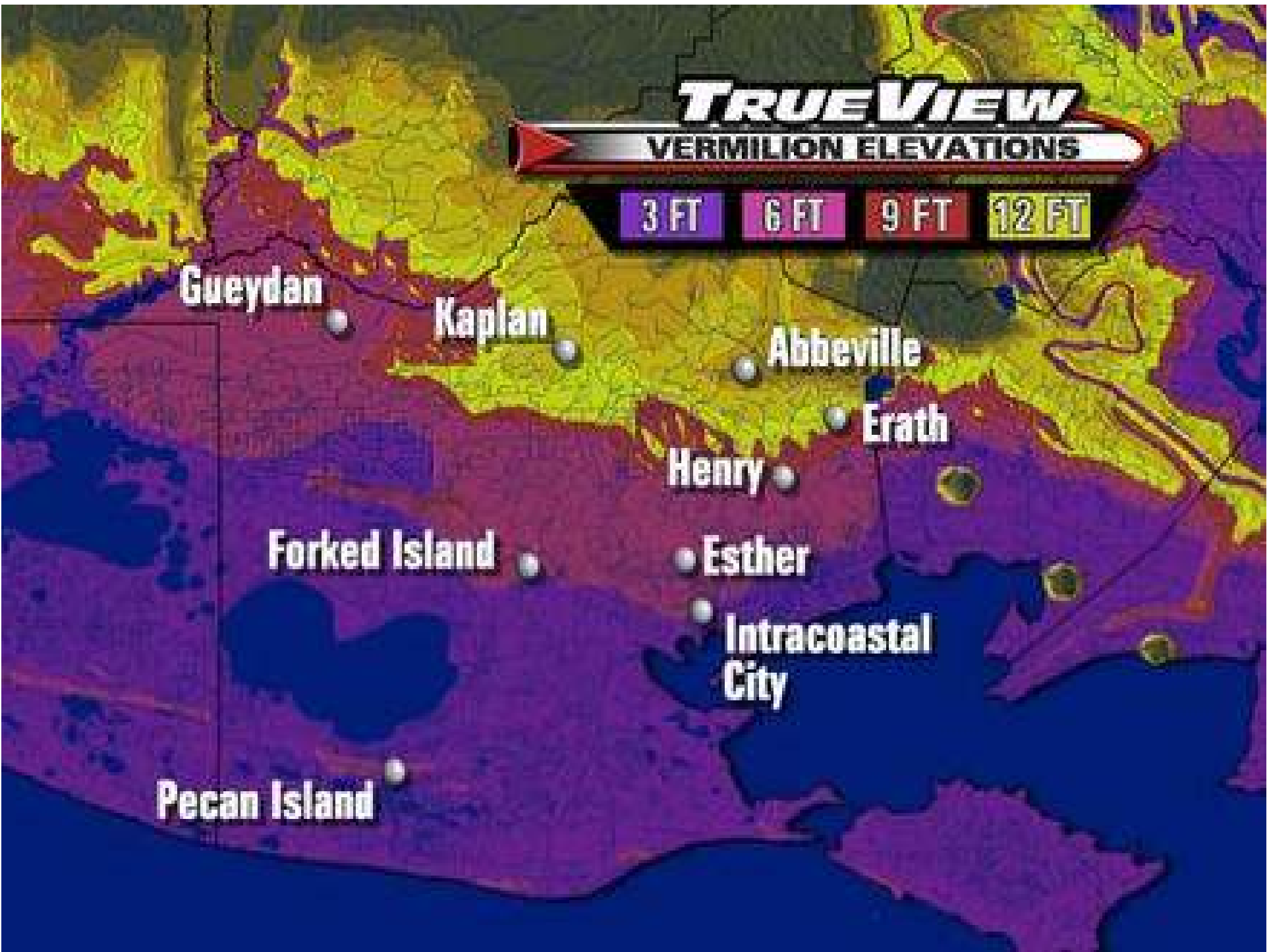
Henry

Forked Island

Esther

Intracoastal
City

Pecan Island



TRUEVIEW

IBERIA ELEVATIONS

3 FT

6 FT

9 FT

12 FT

Cade

Loreauville

Lake Fausse Pt.

New Iberia

Delcambre

Migues

Avery Island

Jeanerette

Louisa

Glencoe

Cypremort Point



TRUEVIEW

LOUISIANA ELEVATIONS

3 FT

6 FT

9 FT

12 FT



TRUEVIEW

10 YEAR RETURN PERIOD

Tech. Paper 40 Floods

30 Minutes	2.75"
1 Hour	3.25"
3 Hour	4.70"
6 Hour	5.90"
12 Hour	7.15"
24 Hour	8.50"

TRUEVIEW

100 YEAR RETURN PERIOD

Tech. Paper 40 Floods

30 Minutes	3.45"
1 Hour	4.25"
3 Hour	6.70"
6 Hour	8.50"
12 Hour	10.50"
24 Hour	12.50"

TRUEVIEW

VERMILION RIVER FLOODS

Surrey Street Records

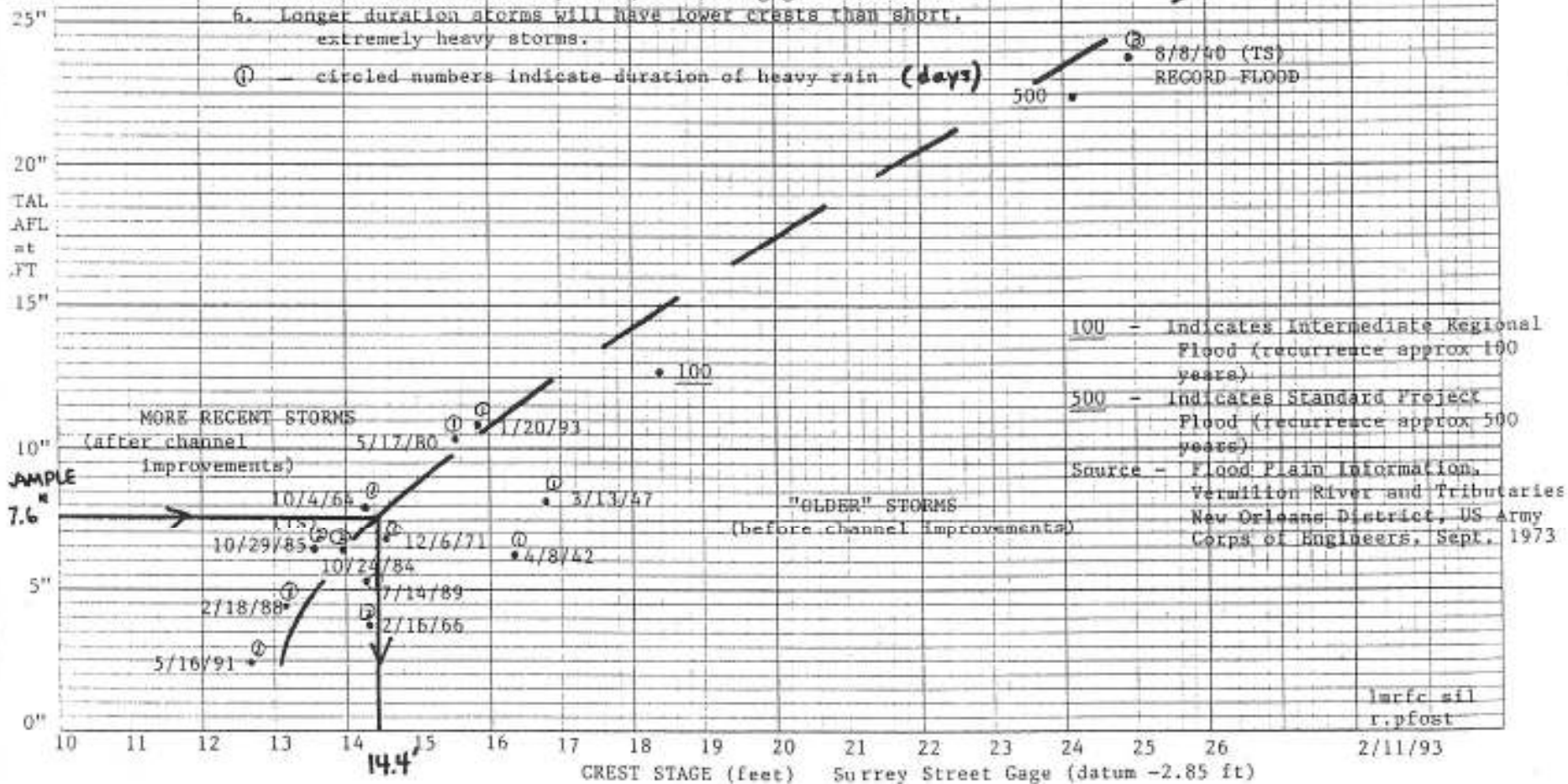
1	— 8/9/1940	24.87ft	23.69"/48hrs
2	— 100yr Flood	18.35ft	(12.5"/24hrs)
3	— 3/13/1947	16.80ft	8.08"/24hrs
4	— 4/8/1942	16.37ft	6.11"
5	— 1/20/1993	15.86ft	10.83"/13hrs
6	— 5/17/1980	15.56ft	10.52"/24hrs
7	— 6/10/2001	14.93ft	15.2"/5 Days

Vermilion River at Lafayette, Louisiana (Surrey Street)

GRAPH FOR ESTIMATING CREST ON VERMILION RIVER AT LAFAYETTE, LA.

1. Use total rainfall amount for Lafayette Airport (LFA) on ordinate axis
2. Follow line to blue dashed curve and read down to estimate of crest at Surrey Street gage
3. Time to crest is within just a few hours after the end of the heavy rain (sometimes less than 1 hour)
4. Rainfall distribution, tides, wind, and season of year should all be considered when using this graph to estimate a crest.
5. All crest stages refer to Surrey Street gage (current datum -2.85 ft). To obtain elevation above mean sea level, add (-2.85) to gage elevation.
6. Longer duration storms will have lower crests than short, extremely heavy storms.


① - circled numbers indicate duration of heavy rain (days)



FLOOD PLAIN INFORMATION
VERMILION RIVER AND TRIBUTARIES
IN AND NEAR
LAFAYETTE, LOUISIANA



PREPARED FOR
CITY OF LAFAYETTE, LA.
BY
DEPARTMENT OF THE ARMY
NEW ORLEANS DISTRICT, CORPS OF ENGINEERS
NEW ORLEANS, LOUISIANA
SEPTEMBER 1973



TRUEVIEW

VERMILION RIVER

Major Vermilion Floods

December 6, 1971 Event

6.78" in 24 hours

< 5yr Rainfall

(3.5" on 1st and 2nd of Month)

Surrey St. Crest — 14.26ft

© 2008 Tele Atlas
Image © 2008 DigitalGlobe

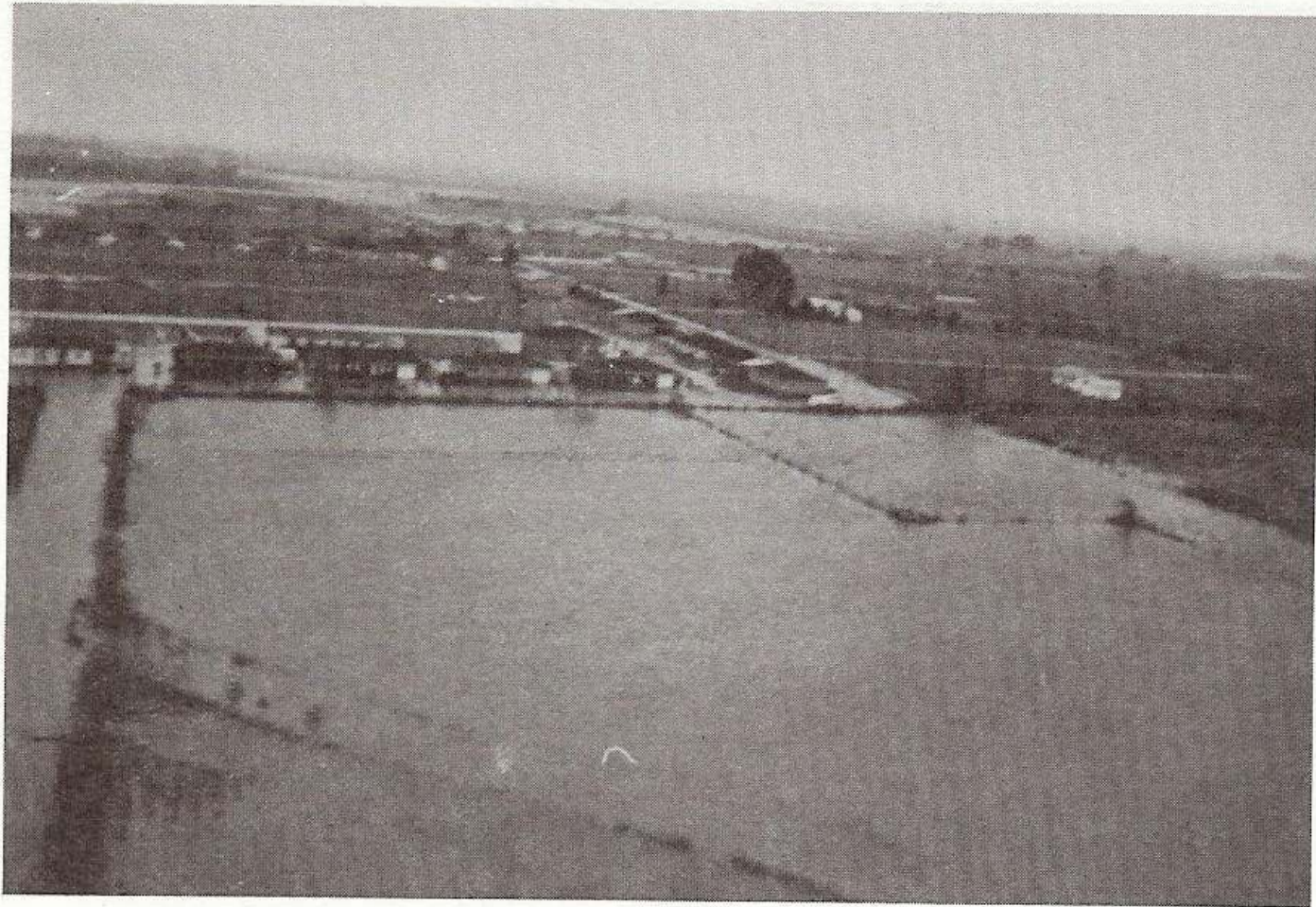
© 2007 Google



Beavers Park, tennis courts in the foreground and U.S. Highway 90 in the background.



Detention home upstream of Surrey St. on the left descending bank.




Looking southwest towards Eraste Landry Rd. Extension.



Looking east along Eraste Landry Rd. Extension.



Looking downstream at Eraste Landry Rd. Channel 3 KATC TV on left side of photograph.



TRUEVIEW

VERMILION RIVER

Major Vermilion Floods

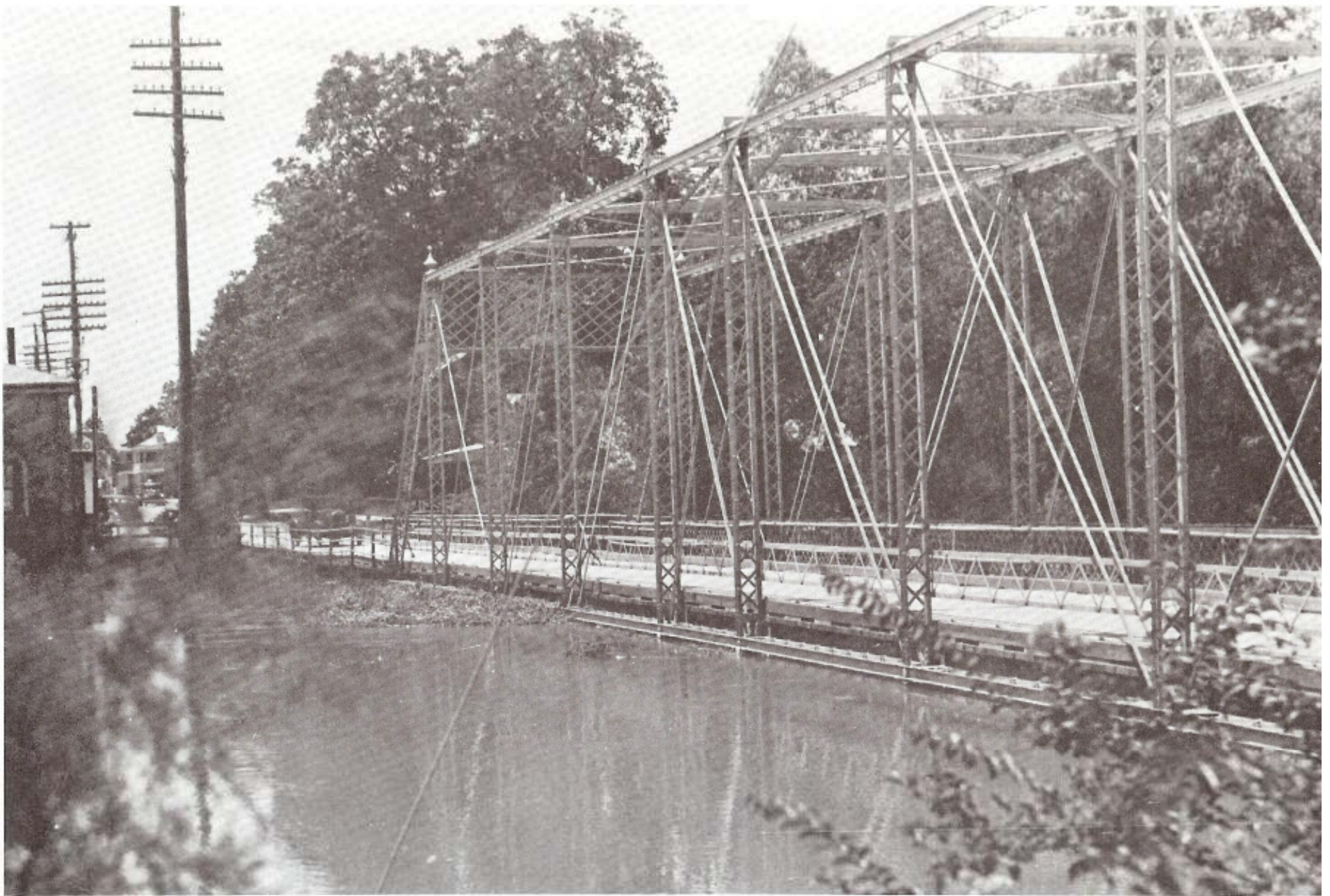
August 9, 1940

19.63" 24 hours

23.69" 48 hours

Surrey St. Crest: 24.87ft

100 Year Corps Project Flood — 18.35ft




Highway bridge over Bayou Teche at Breaux Bridge.

Figure 20. Ground view of August 1940 flood.



General Mouton Bridge (La. 729)

Figure 21. Ground view of August 1940 flood.



TRUEVIEW

VERMILION RIVER

Major Vermilion Floods

January 20, 1993 Event

10.83" in 13 hours

Near 100 Year 12 hour Rain

(100 Year 24hr Rain = 12.5")

Surrey St. Crest: 15.86ft

446 Homes Flooded/23 Businesses

© 2003 Google
Image © 2003 Earthstar

Google



TRUEVIEW

VERMILION RIVER

Major Vermilion Floods

T.S. Allison June 2001 Event

10~32" in a Week

Surrey St. Readings:

6/6 — 9.44

6/9 — 14.99

6/7 — 13.31

6/10 — 15.24

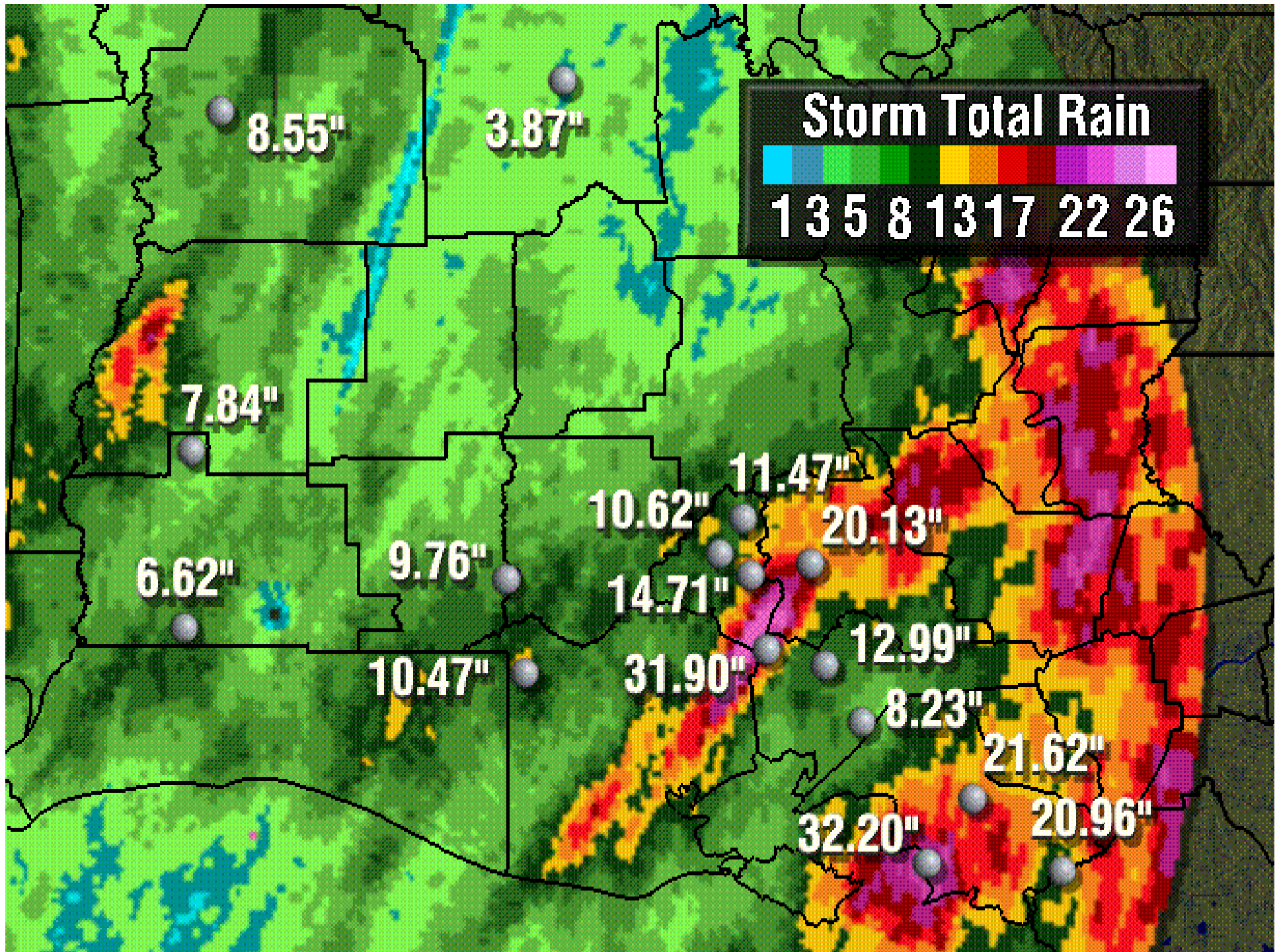
6/8 — 14.61

6/11 — 14.93

400 Homes Flooded/12 Businesses

© 2001 TrueView
Image © 2001 Earthstar

Google



TRUEVIEW

VERMILION FLOODING

TROPICAL STORM ALLISON

June 2001	4th	5th	6th	7th	8th	9th	10th
24hr Rain	.05"	1.48"	6.42"	4.38"	1.79"	1.13"	.48"
Surrey St.	5.91'	6.45'	9.44'	13.31'	14.61'	14.99'	15.24'

