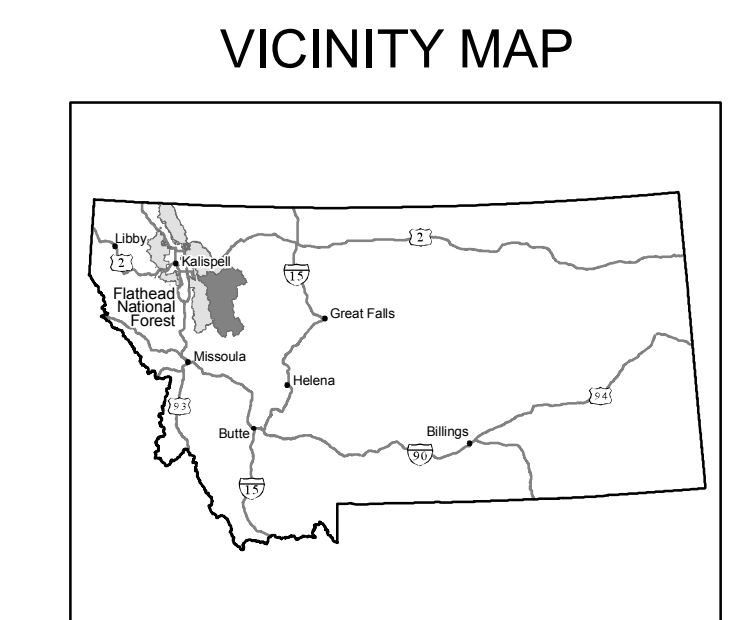


U.S. Department of Agriculture
Forest Service
MONTANA
October 2007
America's Great Outdoors

Motor Vehicle Use Map
Flathead National Forest
Spotted Bear Ranger District



INFORMATION SOURCES

FOREST SUPERVISOR'S OFFICE
1935 3rd Ave. East
Kalispell, MT 59901
(406) 758-5200
FAX (406) 758-5363
www.fs.fed.us/r1/flathead

SPOTTED BEAR RANGER DISTRICT
8975 Hwy 2 East
Hungry Horse, MT 59919
(406) 758-5376 (Summer)
(406) 387-3800 (Winter)
FAX (406) 758-5390



treadlightly!
LEAVING A GOOD IMPRESSION

Travel and recreate with minimum impact.
Respect the environment and the rights of others.
Educate yourself, plan and prepare before you go.
Allow for future use of the outdoors by leaving it better than you found it.
Discover the rewards of responsible recreation.
For more information on Tread Lightly!, go to www.treadlightly.org or call 1-800-966-9900.

The U.S. Department of Agriculture (USDA) prohibits discrimination in all its programs and activities on the basis of race, color, national origin, age, disability, and where applicable, sex, marital status, familial status, parental status, religion, sexual orientation, genetic information, political beliefs, reprisal, or because all or part of an individual's income is derived from any public assistance program. (Not all prohibited bases apply to all programs.) Persons with disabilities who require alternative means for communication of program information (Braille, large print, audiotape, etc.) should contact USDA's TARGET Center at (202) 720-2600 (voice and TDD). To file a complaint of discrimination, write to USDA, Director, Office of Civil Rights, 1400 Independence Avenue, S.W., Washington, D.C. 20250-9410, or call (800) 795-3272 (voice) or (202) 720-6382 (TDD).

LEGEND

- Roads Open to Highway Legal Vehicles Only
- Trails Open to Motorcycles Only
- Dispersed Camping
- Seasonal Designation (See Table)
- Other Public Roads
- Other Public Trails
- Motorized Trail Access
- Seasonal Designation Change (Milepost)
- Forest or Unit Boundary
- Non-National Forest System Lands within this National Forest
- Wilderness
- Lakes & Rivers

0 0.5 1 2 3 4 Miles

PURPOSE AND CONTENTS OF THIS MAP

This map dated 10/2007 shows the National Forest System roads, National Forest System trails, and the areas on National Forest System lands in the Spotted Bear Ranger District that are designated for motor vehicle use pursuant to 36 CFR 212.51. The map also contains a list of those designated roads, trails, and areas that enumerates the types of vehicles that are allowed on each route and in each area and any seasonal restrictions that apply on those routes and in those areas.

Designation of a road, trail, or area for motor vehicle use by a particular class of vehicle under 36 CFR 212.51 should not be interpreted as encouraging or inviting use, or to imply that the road, trail or area is passable, actively maintained, or safe for travel. Motor vehicle designations include parking along designated routes and at facilities associated with designated routes when it is safe to do so and when not causing damage to National Forest System resources. Seasonal weather conditions and natural events may render designated routes and trails impassable for extended periods. Designated areas may contain dangerous or impassable terrain. Many designated roads and trails may be passable only by high-clearance vehicles or four-wheel drive vehicles. Maintenance of designated roads and trails will depend on available resources, and many may receive little maintenance.

This motor vehicle use map identifies those roads, trails, and areas designated for the motor vehicle use under 36 CFR 212.51 for the purpose of enforcing the prohibition at 36 CFR 261.13. This is a limited purpose. The other public roads are shown for information and navigation purposes only and are not subject to designation under the Forest Service travel management regulation.

These designations apply only to National Forest System roads, National Forest System trails, and areas on National Forest System lands.

PROHIBITIONS

It is prohibited to possess or operate a motor vehicle on National Forest System lands on the Spotted Bear Ranger District other than in accordance with these designations (CFR 261.13).

Violations of 36 CFR 261.13 are subject to a fine of up to \$5,000 or imprisonment for 6 months or both (U.S.C. 3571(e)). This prohibition applies regardless of the presence or absence of signs.

This map does not display nonmotorized uses, over-snow uses, or other facilities and attractions on the Spotted Bear Ranger District. Obtain a forest visitor map for more complete information.

Designated roads, trails and areas may also be subject to temporary, emergency closures, and visitors must comply with signs notifying them of such restrictions. A national forest may issue an order to close a road, trail or area on a temporary basis to protect the life, health, or safety of forest visitors or the natural or cultural resources in these areas. Such temporary and/or emergency closures are consistent with the Travel Management Rule (36 CFR 212.52(b)), 36 CFR 261 subpart B).

The designation "road or trail open to all motor vehicles" does not supersede vehicle size or weight limits imposed through State traffic law.

DISPERSED CAMPING

- Motorized cross-country travel to a dispersed campsite is permissible within 300 feet of designated motorized roads.
- Campsite selection must be completed by nonmotorized means, and then accessed by the most direct route (no more than 300 feet) without causing resource damage.
- Cutting, damaging, or harming (such as driving over) trees or vegetation is not allowed to access dispersed camping spots.
- Moving, going around, going over, or going past barriers on roads (e.g., gates, rocks, berms, barriers, signs, etc.) is not allowed.
- In all developed recreation sites, such as developed campgrounds, picnic sites, trailheads, boat launches, etc., motor vehicle access is restricted to designated roads and parking sites only. 300 feet access of these roads is not allowed to access dispersed campsites.
- This 300-foot district wide access exception does not apply where existing seasonal restrictions prohibit traveling off designated routes to a campsite. Existing local rules take precedence over this exception. This distance could be modified through subsequent site-specific planning.

HUNGRY HORSE RESERVOIR

All designated motorized Forest Service system roads open to the waters edge remain legally open to both motorized access and the 300 foot dispersed camping rule to the draw-down water level.

OPERATOR RESPONSIBILITIES

Operating a motor vehicle on National Forest System roads, National Forest System trails, and in areas on National Forest System lands carries a greater responsibility than operating that vehicle in a city or other developed setting. Not only must the motor vehicle operators know and follow all applicable traffic laws, but they need to show concern for the environment as well as other forest users. The misuse of motor vehicles can lead to the temporary or permanent closure of any designated road, trail, or area. Operators of motor vehicles are subject to State traffic law, including State requirements for licensing, registration, and operation of the vehicle in question.

Motor vehicle use, especially off-highway vehicle use, involves inherent risks that may cause property damage, serious injury, and possibly death to participants. Riders should drive cautiously and anticipate rough surfaces and features, such as snow, mud, vegetation, and water crossings common to remote driving conditions. Participants voluntarily assume full responsibility for these damages, risks, and dangers. Motor vehicle operators should take care at all times to protect themselves and those under their responsibility.

Much of the Spotted Bear Ranger District is remote, and medical assistance may not be readily available. Cellular telephones do not work in many areas of the Spotted Bear Ranger District. Operators should take adequate food, water, first aid supplies, and other equipment appropriate for the conditions and expected weather.

ALWAYS REMEMBER TO RESPECT PRIVATE LAND! PROTECT YOUR PRIVILEGE. STAY ON DESIGNATED ROADS AND TRAILS AND IN DESIGNATED AREAS.

Read and understand this map in its entirety. If you have questions, please contact the Spotted Bear Ranger District for clarification.

Road, trail, and area users must comply with this map, as well as all Federal, State, and local laws and regulations. Compliance with these rules is the responsibility of the user.

EXPLANATION OF LEGEND ITEMS

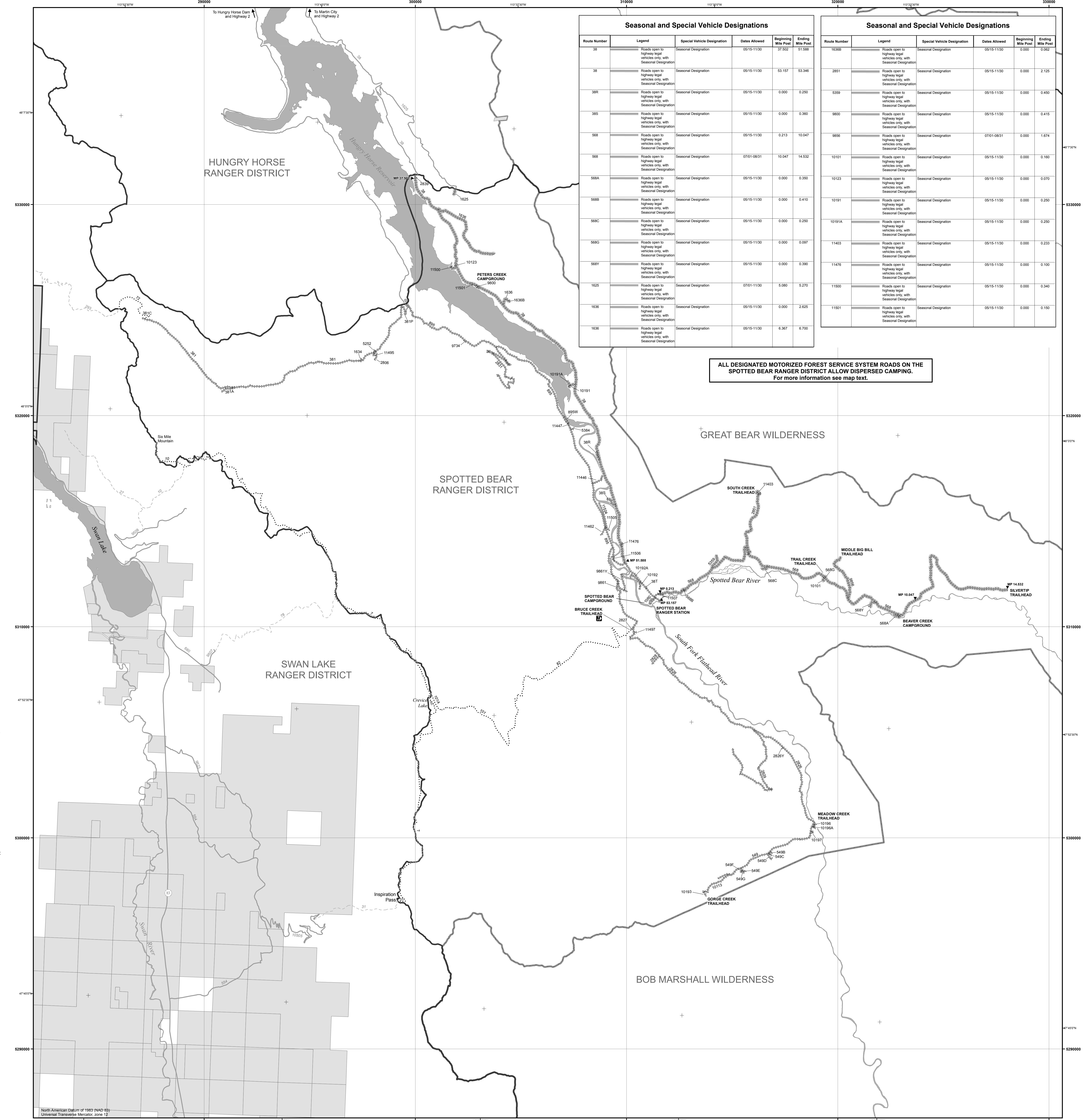
Roads Open to Highway Legal Vehicles Only:
These roads are open only to motor vehicles licensed under State law for general operation on all public roads within the State.

Trails Open to Motorcycles Only:
These trails are open only to motorcycles. Sidecars are not permitted.

Seasonal Designation:
This symbol, used in conjunction with one of the other road or trail symbols, indicates that the road or trail is open only during certain portions of the year. Refer to the Seasonal and Special Designation Table for further instructions.

Dispersed Camping:
This symbol is used along with a designated road to indicate that limited cross country motor vehicle use is allowed within a specific distance of that route, solely for the purpose of dispersed camping. All roads on the Spotted Bear Ranger District allow dispersed camping.

Motorized Trail Access:
This symbol indicates a trail head for access to a motorized route. Not all motorized routes have trail heads and those that do may range from primitive to developed.



Seasonal and Special Vehicle Designations

Route Number	Legend	Special Vehicle Designation	Dates Allowed	Beginning Mile Post	Ending Mile Post
38	Roads open to highway legal vehicles only with Seasonal Designation	Seasonal Designation	05/15-11/30	37.502	51.558
38	Roads open to highway legal vehicles only with Seasonal Designation	Seasonal Designation	05/15-11/30	53.157	53.346
38R	Roads open to highway legal vehicles only with Seasonal Designation	Seasonal Designation	05/15-11/30	0.000	0.250
38S	Roads open to highway legal vehicles only with Seasonal Designation	Seasonal Designation	05/15-11/30	0.000	0.360
56R	Roads open to highway legal vehicles only with Seasonal Designation	Seasonal Designation	05/15-11/30	0.213	10.047
56R	Roads open to highway legal vehicles only with Seasonal Designation	Seasonal Designation	07/01-08/31	10.047	14.632
568A	Roads open to highway legal vehicles only with Seasonal Designation	Seasonal Designation	05/15-11/30	0.000	0.300
568B	Roads open to highway legal vehicles only with Seasonal Designation	Seasonal Designation	05/15-11/30	0.000	0.410
568C	Roads open to highway legal vehicles only with Seasonal Designation	Seasonal Designation	05/15-11/30	0.000	0.200
568Q	Roads open to highway legal vehicles only with Seasonal Designation	Seasonal Designation	05/15-11/30	0.000	0.007
568Y	Roads open to highway legal vehicles only with Seasonal Designation	Seasonal Designation	05/15-11/30	0.000	0.360
162S	Roads open to highway legal vehicles only with Seasonal Designation	Seasonal Designation	07/01-11/30	5.080	5.270
1636	Roads open to highway legal vehicles only with Seasonal Designation	Seasonal Designation	05/15-11/30	0.000	2.625
1638	Roads open to highway legal vehicles only with Seasonal Designation	Seasonal Designation	05/15-11/30	6.367	6.700

Seasonal and Special Vehicle Designations

Route Number	Legend	Special Vehicle Designation	Dates Allowed	Beginning Mile Post	Ending Mile Post
1036B	Roads open to highway legal vehicles only with Seasonal Designation	Seasonal Designation	05/15-11/30	0.000	7.062
2851	Roads open to highway legal vehicles only with Seasonal Designation	Seasonal Designation	05/15-11/30	0.000	2.125
3359	Roads open to highway legal vehicles only with Seasonal Designation	Seasonal Designation	05/15-11/30	0.000	0.450
9800	Roads open to highway legal vehicles only with Seasonal Designation	Seasonal Designation	05/15-11/30	0.000	0.415
9858	Roads open to highway legal vehicles only with Seasonal Designation	Seasonal Designation	07/01-08/31	0.000	1.674
10101	Roads open to highway legal vehicles only with Seasonal Designation	Seasonal Designation	05/15-11/30	0.000	0.160
10123	Roads open to highway legal vehicles only with Seasonal Designation	Seasonal Designation	05/15-11/30	0.000	0.070
10191	Roads open to highway legal vehicles only with Seasonal Designation	Seasonal Designation	05/15-11/30	0.000	0.250
10191A	Roads open to highway legal vehicles only with Seasonal Designation	Seasonal Designation	05/15-11/30	0.000	0.250
11403	Roads open to highway legal vehicles only with Seasonal Designation	Seasonal Designation	05/15-11/30	0.000	0.233
11476	Roads open to highway legal vehicles only with Seasonal Designation	Seasonal Designation	05/15-11/30	0.000	0.100
11500	Roads open to highway legal vehicles only with Seasonal Designation	Seasonal Designation	05/15-11/30	0.000	0.340
11501	Roads open to highway legal vehicles only with Seasonal Designation	Seasonal Designation	05/15-11/30	0.000	0.150

ALL DESIGNATED MOTORIZED FOREST SERVICE SYSTEM ROADS ON THE SPOTTED BEAR RANGER DISTRICT ALLOW DISPERSED CAMPING.
For more information see map text.