

Impact of Emission Reductions on Exposures and Exposure Distributions:

Application of a Geographic Exposure Model

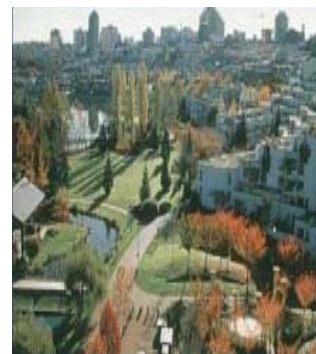
Julian Marshall (Civil Engineering)

G. Ramachandran (Environmental Health)

University of Minnesota

Funding: US EPA

22 January 2008



Issue

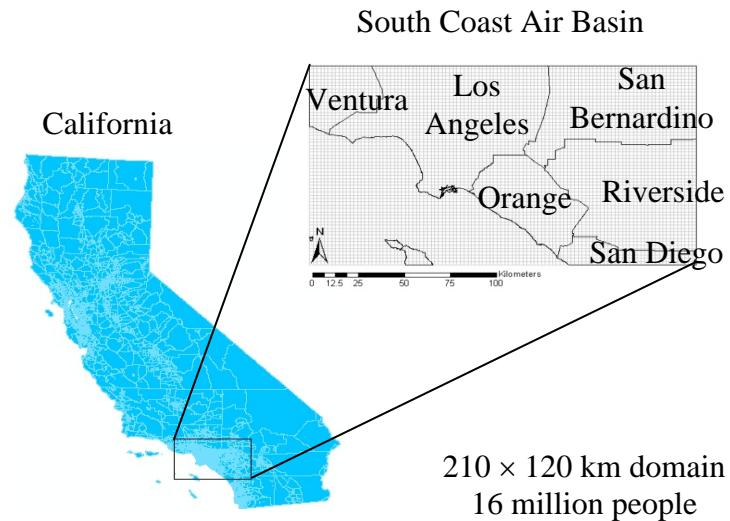
- Improving air quality involves prioritizing among sources
- Exposure and health impacts vary among sources
 - “Intake fraction”
- Exposure disparities (race/income)

Objectives

- Compare emission-reductions among sources:
 - Impact on average exposure
 - Impact on exposure distributions
- Policy/management implications

Approach

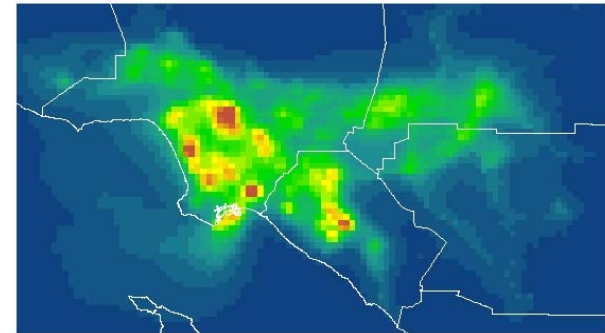
- Exposure model (25,000 people) for California's South Coast
- Systematically reduce emissions
 - Impact on average exposures
 - Impact on exposure distributions



Exposure Model

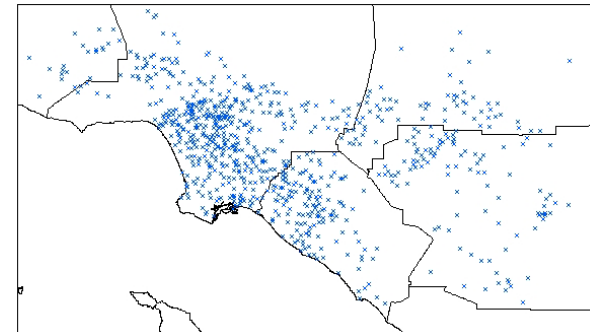
1. Ambient concentrations (CAMx model)

- 6 air toxics
- One year



2. Time-location-activity survey

- ~ 29,000 person-days
- "Geo-coded" locations

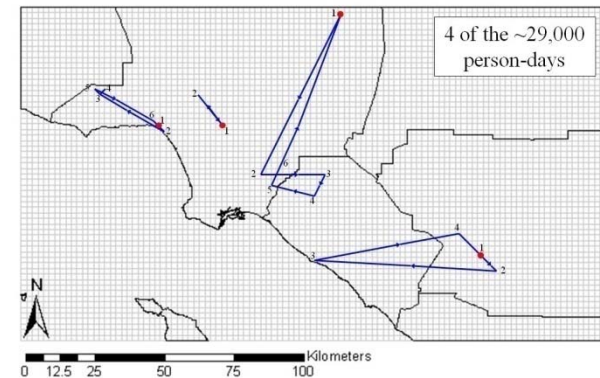


3. Breathing rates

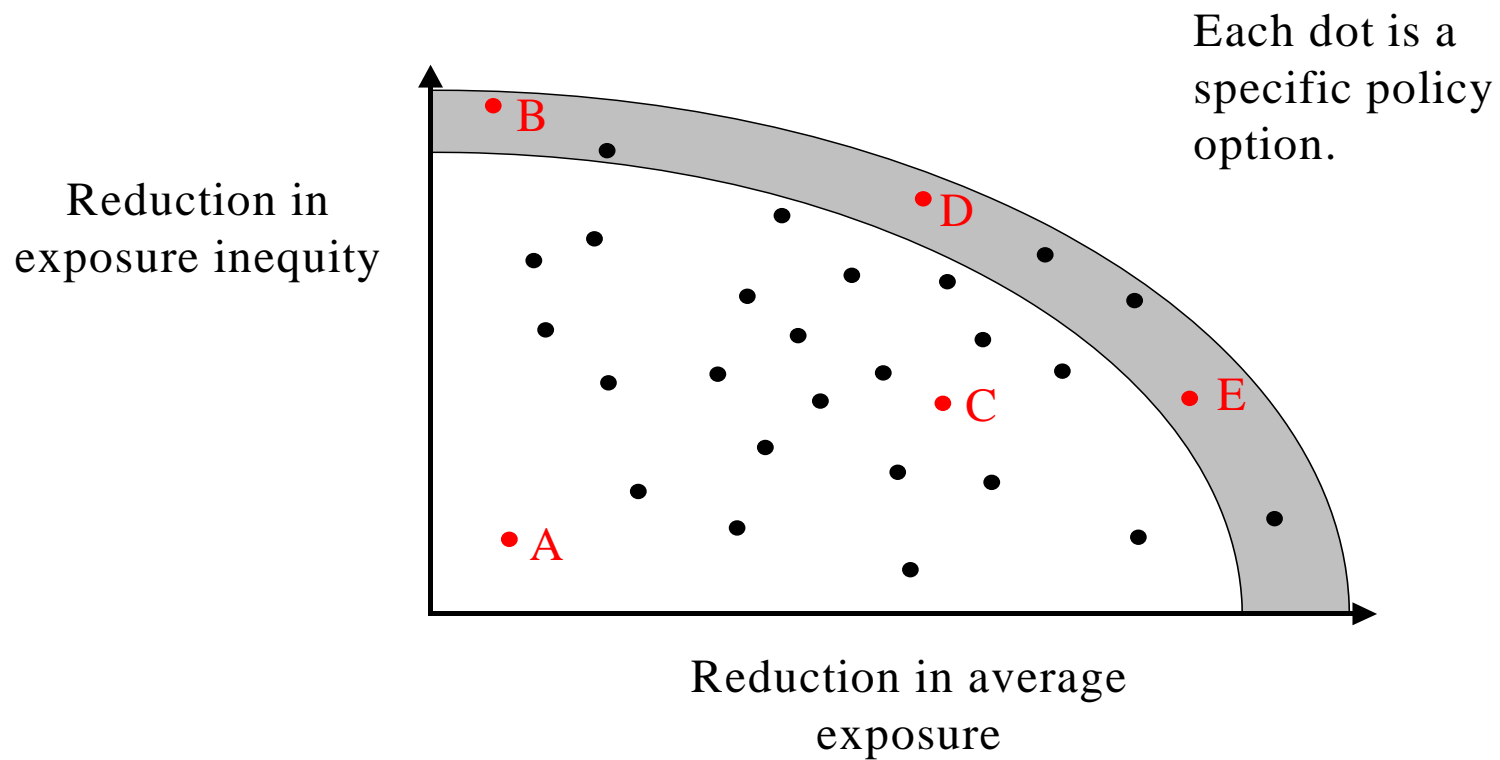
- Age, gender, activity level (Layton 1993)

4. Microenvironments

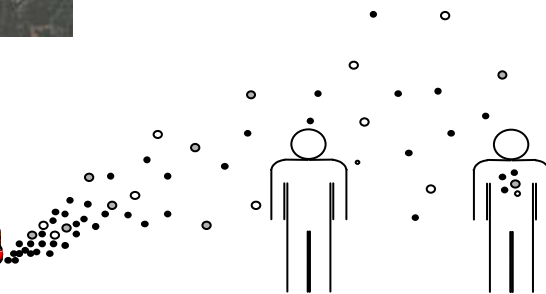
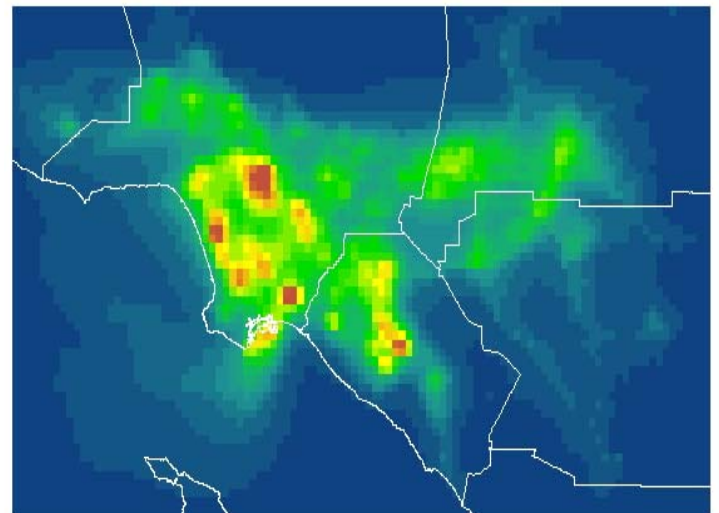
- Indoors, outdoors, in-vehicle
- Monte Carlo



Hypothetical Results

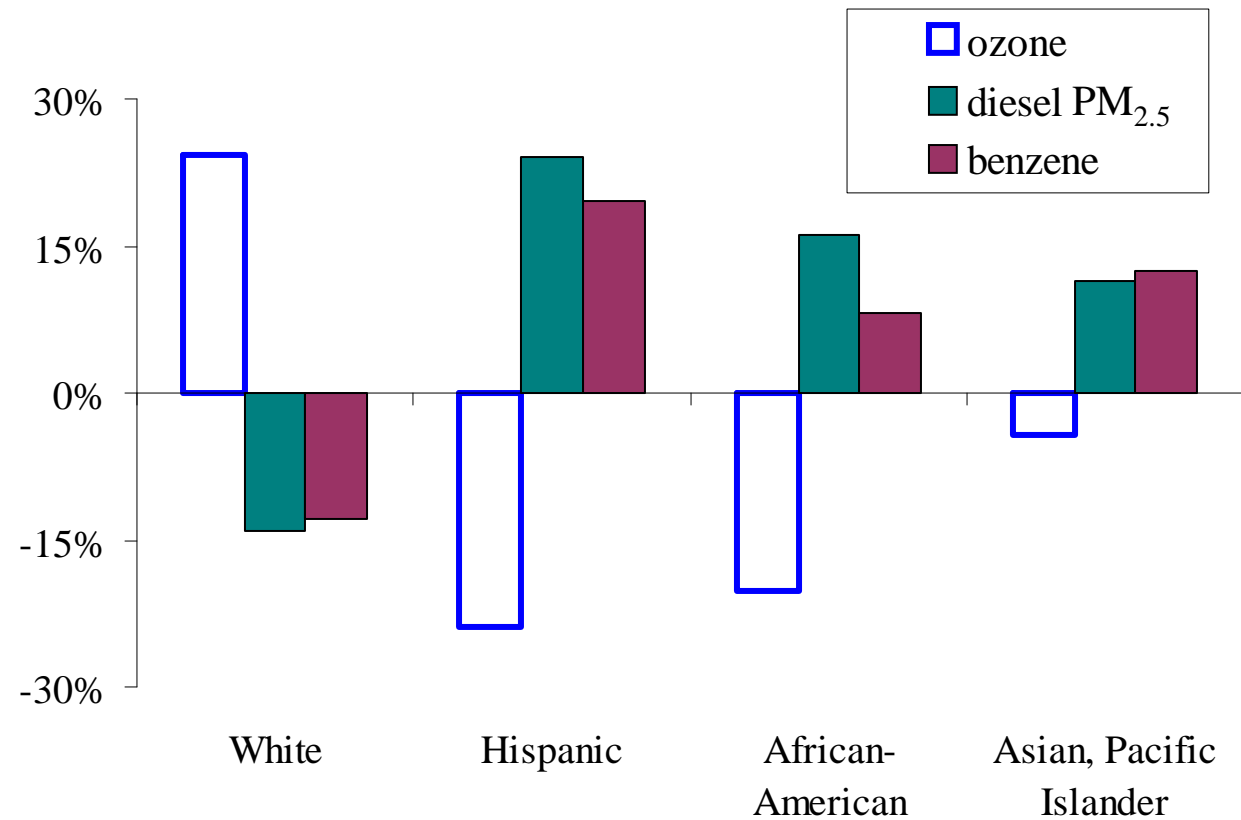


Thank you.



Intakes and ethnicity

Median intake,
relative to
population median



Air-pollution health-effects paradigm

