

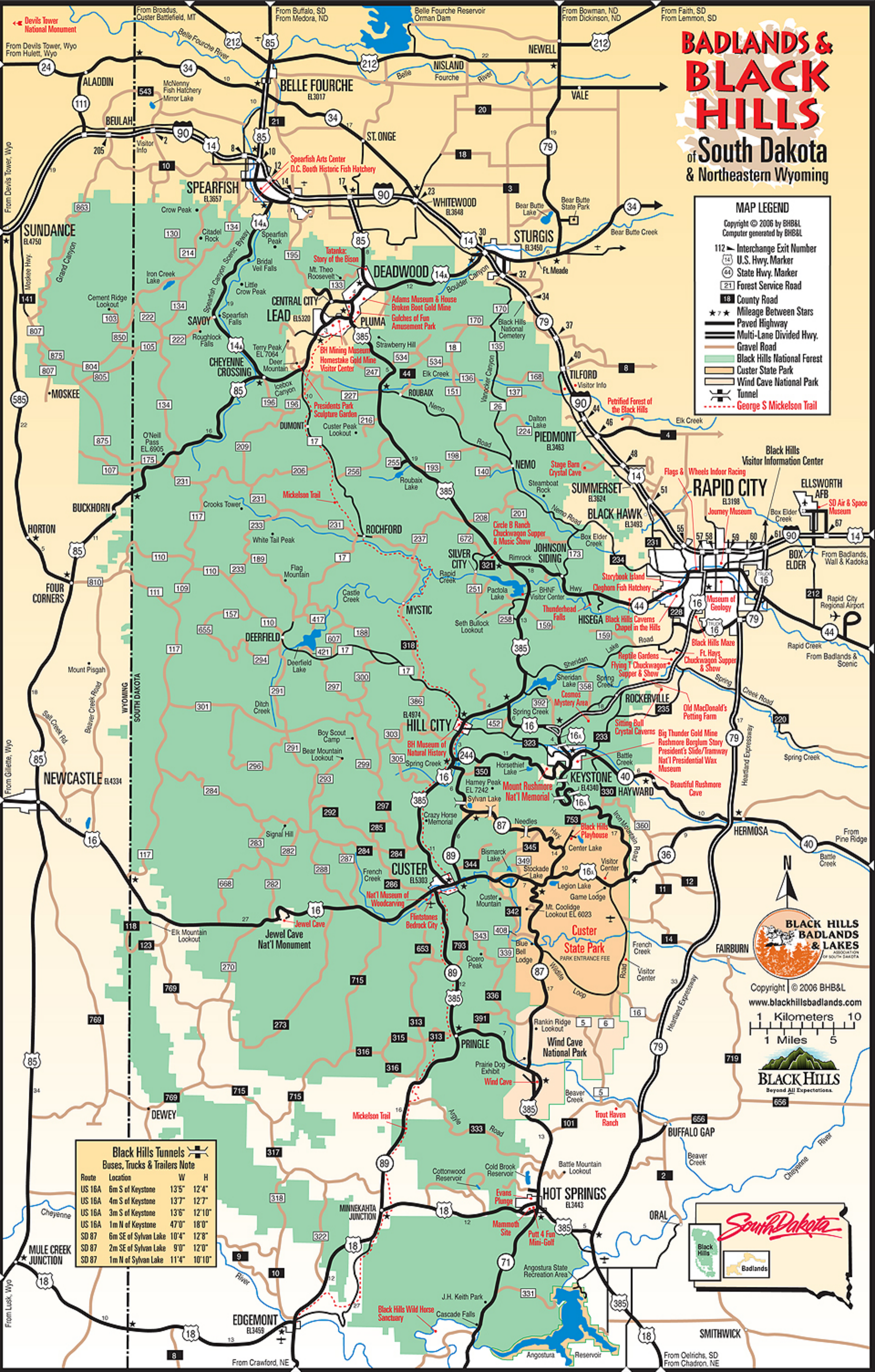
BADLANDS & BLACK HILLS

of South Dakota & Northeastern Wyoming

MAP LEGEND

Copyright © 2006 by BHB&L
Computer generated by BHB&L

- 112 Interchange Exit Number
- 14 U.S. Hwy. Marker
- 44 State Hwy. Marker
- 21 Forest Service Road
- 18 County Road
- ★ ★ Mileage Between Stars
- Paved Highway
- Multi-Lane Divided Hwy.
- Gravel Road
- Black Hills National Forest
- Custer State Park
- Wind Cave National Park
- Tunnel
- George S Mickelson Trail



Black Hills Tunnels

Buses, Trucks & Trailers Note

| Route | Location | W | H |
|--------|----------------------|-------|--------|
| US 16A | 6m S of Keystone | 13'5" | 12'4" |
| US 16A | 4m S of Keystone | 13'7" | 12'7" |
| US 16A | 3m S of Keystone | 13'6" | 12'10" |
| US 16A | 1m N of Keystone | 47'0" | 18'0" |
| SD 87 | 6m SE of Sylvan Lake | 10'4" | 12'8" |
| SD 87 | 2m SE of Sylvan Lake | 9'0" | 12'0" |
| SD 87 | 1m N of Sylvan Lake | 11'4" | 10'10" |



Copyright © 2006 BHB&L
www.blackhillsbadlands.com

