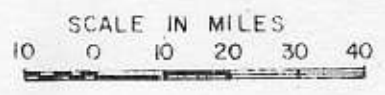




PATH OF HURRICANE CAMILLE

Map based on information compiled
by the Red Cross



○ Jackson

○ Meridian



MISS.

ALA.

Laurel

Bogalusa

L.A.

○ Mobile

Gulfport

Biloxi

Pascagoula

Pensacola

Pass Christian
Bay St Louis

Waveland

New Orleans

GULF OF MEXICO


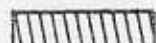
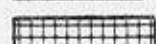

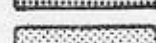
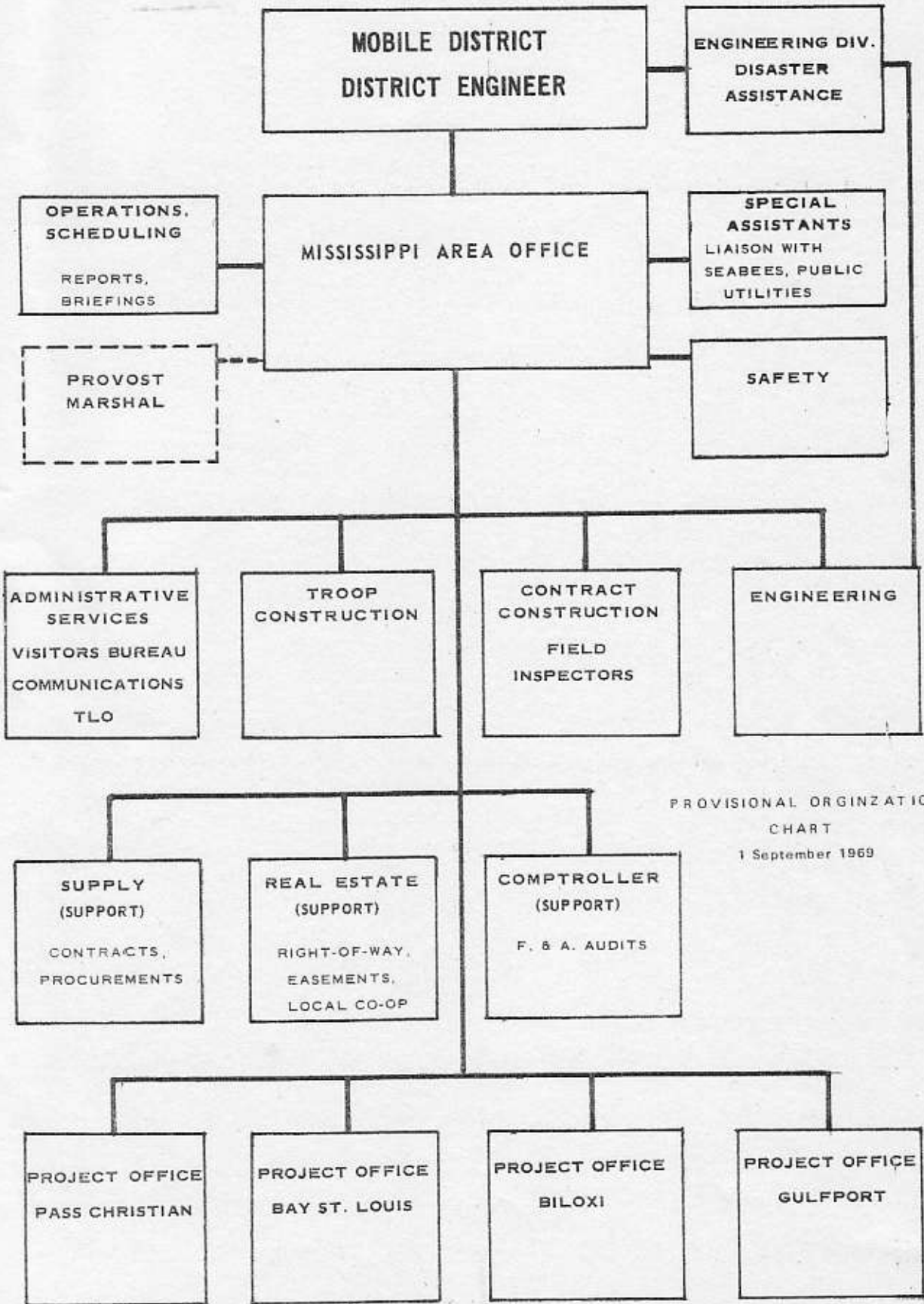
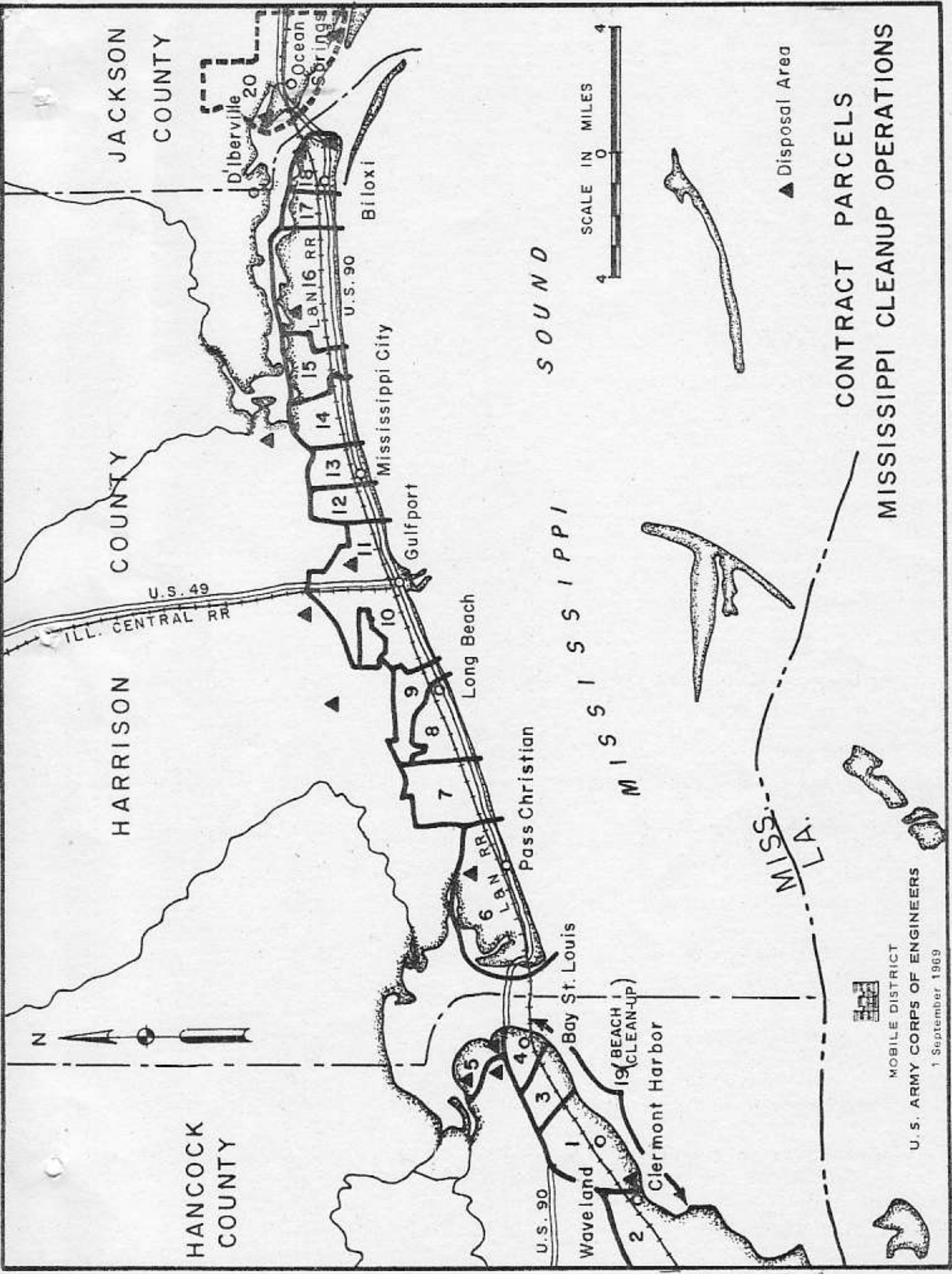
-  Extensive Destruction
-  Heavy to Moderate Damage
-  Moderate to Light Damage
-  Light Damage
-  Damage confined to power & phone failures & loss of tree limbs.

EXHIBIT 2

**FIELD ORGANIZATION CHART
FOR HURRICANE CAMILLE**

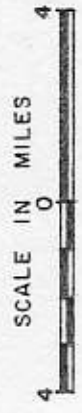


PROVISIONAL ORGANIZATION CHART
1 September 1969



**CONTRACT PARCELS
MISSISSIPPI CLEANUP OPERATIONS**

▲ Disposal Area



MOBILE DISTRICT
U. S. ARMY CORPS OF ENGINEERS
1 September 1969

EXHIBIT A