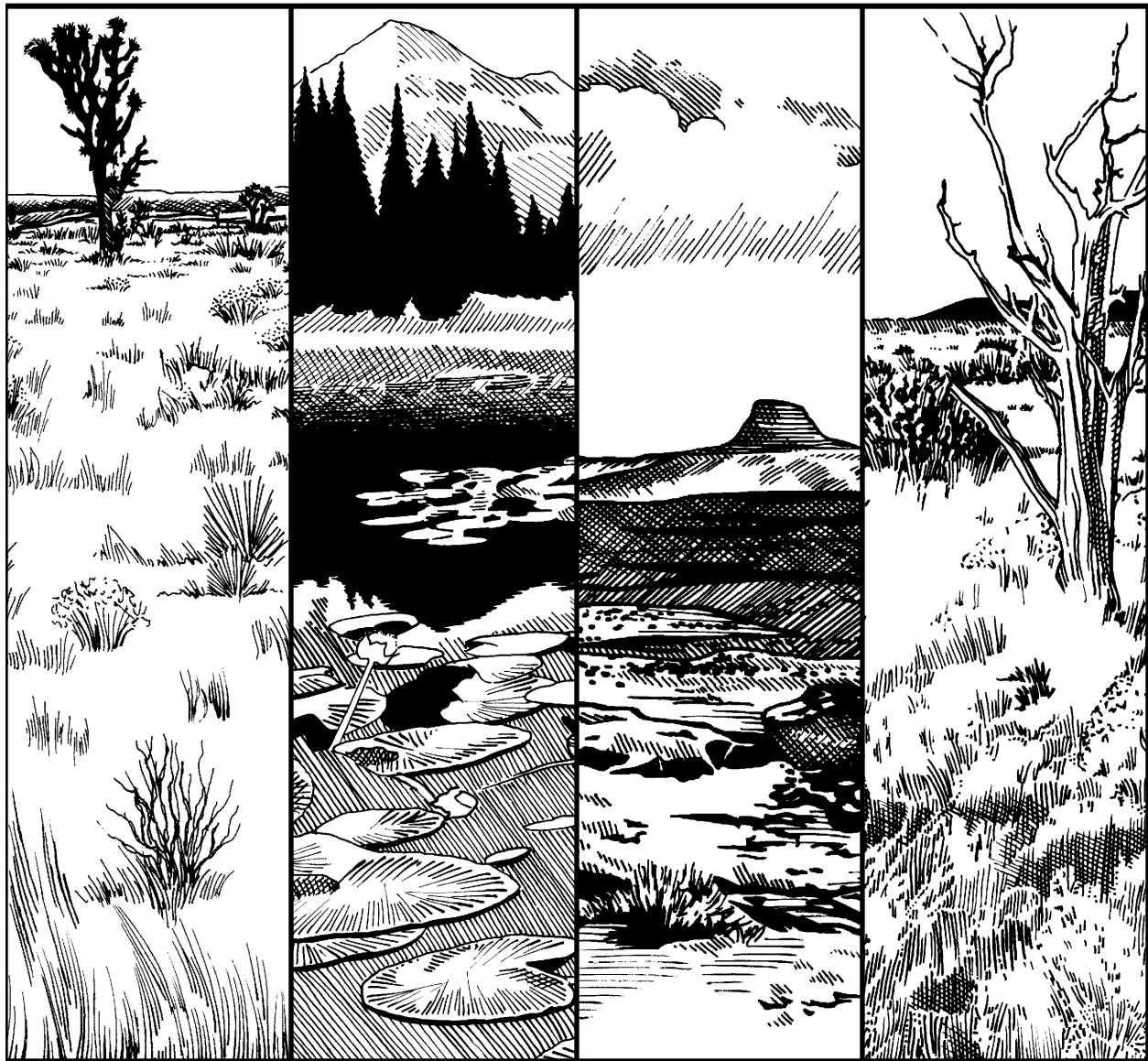


# FISCAL YEAR 1997 ANNUAL REPORT

---

## NATIONAL APPLIED RESOURCE SCIENCES CENTER

---



*Helping those who manage the land*

U.S. Department of the Interior • Bureau of Land Management



# FISCAL YEAR 1997 ANNUAL REPORT

---

## NATIONAL APPLIED RESOURCE SCIENCES CENTER

---

### Table of Contents

From the NARSC Director .....	1
Chapter 1 Work Accomplishments .....	3
Chapter 2 Customer Satisfaction Levels .....	7
Chapter 3 Efficiency Initiatives .....	11
Chapter 4 Future Initiatives .....	13
Appendix 1 NARSC Customer List .....	15
Appendix 2 External Support .....	19
Appendix 3 Customer Comments .....	21
Appendix 4 Projects Completed .....	51



## *From the NARSC Director*

---

The annual report for the National Applied Resource Sciences Center (NARSC) is our report to our shareholders and partners within the Bureau of Land Management and our customers throughout government. It represents our commitment to share our accomplishments during the past year and report how well our customers' expectations and needs were met. In addition, it allows us an opportunity to review the commitments to new initiatives that we made in our last annual report and establish initiative goals for the upcoming year.

NARSC began operations on October 1, 1995, and has completed its second year. While 2 years is not sufficient time to establish a statistically valid trend analysis, it is sufficient time to begin to make commentary on our operations. This report displays our performance for Fiscal Year 1997 in comparison to Fiscal Year 1996. Some potential trends are beginning to appear. The number of completed projects that were greater than 40 hours in duration increased by approximately 13 percent from FY 96. The satisfaction rate, as determined by customer feedback, is at a very high level—98 percent of our customers who returned survey forms indicated that they were satisfied with our overall performance. These surveys also indicated areas where NARSC needs improvement, such as better defining projects and services, meeting agreed upon timeframes, and keeping customers informed of the status of a project.

NARSC established several initiative goals for FY 97. Each initiative goal has been addressed and met during the year. These goals have produced some positive results that have allowed NARSC to improve the delivery of products and services to customers. For example, we shifted NARSC photogrammetrists to higher priority, more complex technical projects, while completing technician-level work through agreement with USGS. We also collocated the photo lab with the Forest Service and the Architecture and Engineering group with the National Park Service and the Fish and Wildlife Service engineering divisions.

Finally, NARSC is committed to continue to seek opportunities to improve our business practices and provide exceptional products and services to our customers. In FY 98, NARSC will again focus on certain initiatives. These new initiatives are detailed in Chapter 4 of this report. The leadership and staff of NARSC are committed to continually improving delivery of products and services, both in terms of quality and cost effectiveness. Our focus and emphasis will change as our customers identify new or emerging requirements. With this in mind, we invite the reader to study this annual report. We also encourage feedback, not only about this report, but throughout the year. As partners with our customers, we stand by our motto: Helping those who manage the land.

*Lee Barkow*



## Chapter 1—Work Accomplishments

The focus of NARSC is to assist BLM offices in achieving the strategic goals of the Bureau. This is primarily accomplished through the delivery of products and services requested by BLM offices or through the transfer of technology to Bureau customers. During FY 97, 85 BLM offices requested assistance from NARSC. These customers ranged from employees stationed in Field Offices to the Acting BLM Director. Appendix 1 lists the BLM offices that requested and were provided assistance in FY 97.

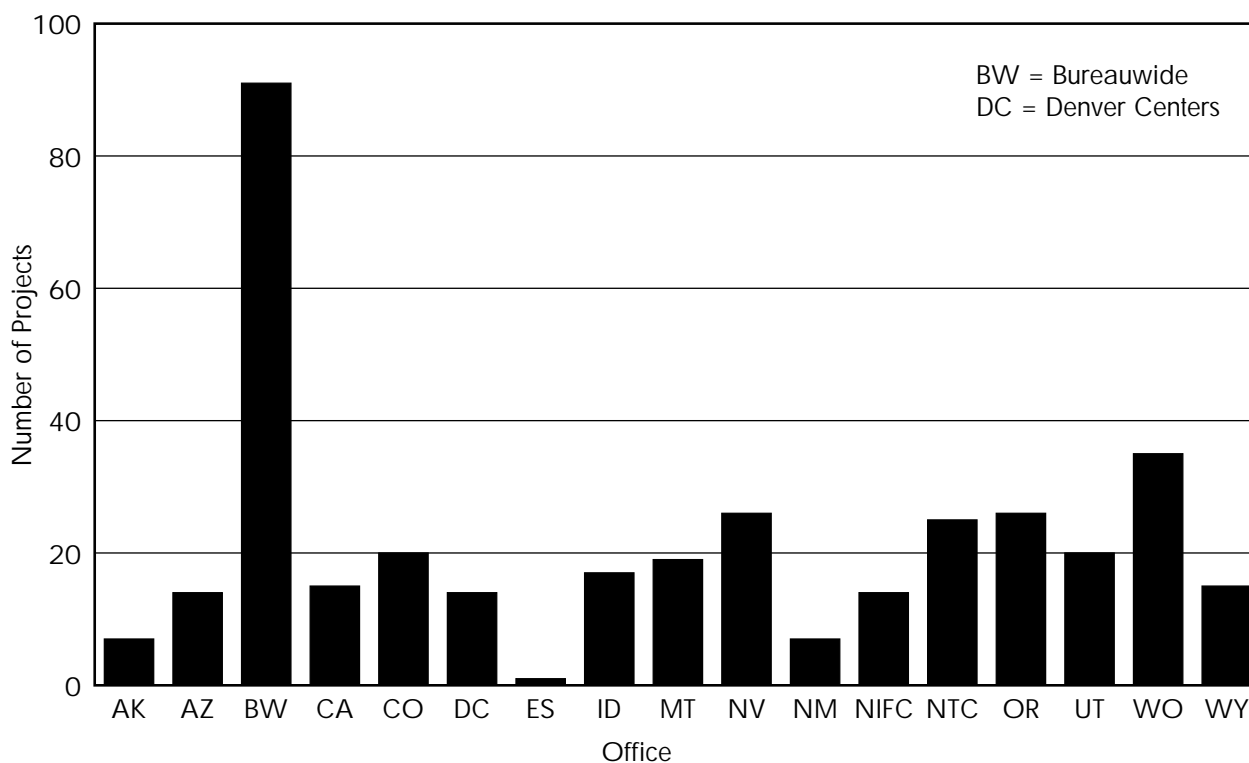
NARSC completed 366 projects for BLM customers in FY 97. This number includes all assistance provided to customers that required more than 40 hours of labor. It also represents a 13 percent increase from FY 96, with 91 percent of FY 97 projects completed for Field Offices and 9 percent completed for headquarters. Projects indicated as Bureauwide in Figure 1 were requested by headquarters to provide services directly to

field offices. The distribution of projects by office is depicted in Figure 1.

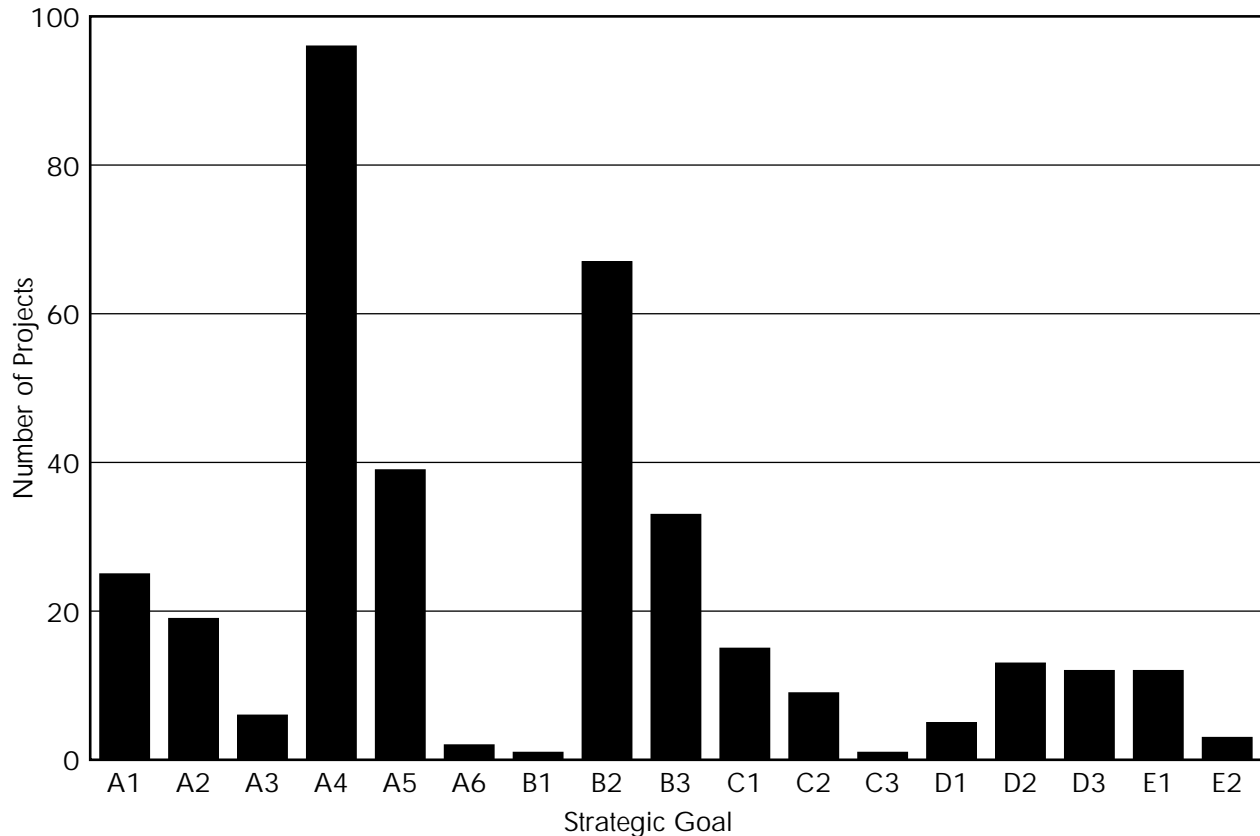
To ensure the relevance of these projects to BLM's strategic goals, each State Director, Associate State Director, Assistant Director, and National Center Director is provided a list of all projects for review on a semi-annual basis. This review in FY 97 confirmed that a vast majority (97 percent) of the projects completed were in support of the strategic goals outlined in the BLM proposed Strategic Plan dated September 8, 1997. The three strategic goals supported by the highest number of FY 97 projects were:

- 1) reduce threats to public health, safety, and property;
- 2) identify resources at risk; and
- 3) improve land, resource, and title information.

The distribution of projects by strategic goal is depicted in Figure 2.



**Figure 1.** Number of Projects by Office.



**Figure 2.** Number of Projects by Strategic Goal.

**Strategic Goals**

- A1 = Provide opportunities for environmentally responsible recreation
- A2 = Provide opportunities for environmentally responsible commercial activities
- A3 = Preserve natural and cultural heritage
- A4 = Reduce threats to public health, safety, and property
- A5 = Improve land, resource, and title information
- A6 = Provide economic and technical assistance
- B1 = Establish and implement management standards and guidelines
- B2 = Identify resources at risk
- B3 = Restore public lands to healthy condition

- C1 = Improve understanding of environmental, social, and economic conditions and trends
- C2 = Promote community-based planning
- C3 = Expand partnerships to implement on-the-ground activities
- D1 = Improve business systems
- D2 = Improve program accountability and performance
- D3 = Deliver quality services to customers
- E1 = Maintain a trained and motivated workforce
- E2 = Institutionalize diversity and improve workforce composition



NARSC played a major role in the completion of many significant BLM projects in FY 97. Examples include the:

- Cadastral survey microfilm system for Wyoming
- West Mojave route inventory project in California
- Grand Staircase-Escalante map
- Design of the Cottonwood recreation site in Idaho
- Design of the remodel for Red Rocks Canyon Visitor Center in Nevada
- Utah wilderness re-inventory
- Analysis of wild horse and burro preparation facilities
- Evaluation and cleanup of the Monite hazardous materials site in Nevada
- National resource inventory (NRI) on public lands test in Colorado
- Assessment of BLM facilities (CASHE) in 12 districts

In addition, NARSC played a major role in the production of the following technical/scientific reports that have agencywide applications:

- Monitoring and Inventory of Special Status Plants
- Grazing Management for Riparian Wetland Areas

- Supporting Science for the Proper Functioning Condition Technique
- Using ArcView to Display, Query, and Plot
- Wildlife Water Catchment Construction in Nevada
- Revised Technical Note on Rangeland Monitoring Analysis, Interpretation, and Evaluation
- Revised Technical Note on Risk Management Criteria for Metals at BLM Mining Sites
- Analysis of Wild Horse and Burro Preparation Facilities

A list of all projects completed by NARSC in FY 97 is provided in Appendix 4.

NARSC also provides a substantial amount of assistance through short-term service (less than 40 hours per request). This assistance is provided in the form of consultation, reviews, and other work. Some examples of short-duration assistance provided by NARSC in FY 97 are:

Editorial Tasks: 40
Graphics Products: 117
Microfiche Orders: 22,000 diazo copies 397,000 fiche
Library Responses: 23,127
Historical Research Requests: 226



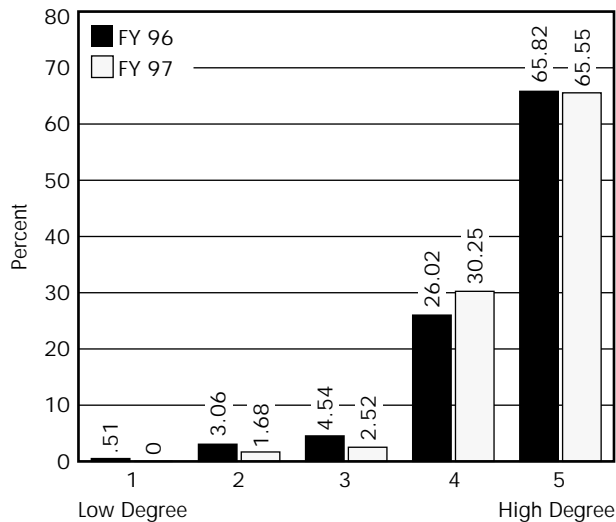
## Chapter 2—Customer Satisfaction Levels

Customer comments are the best indicators of how well we are conforming to our business philosophy, i.e., providing quality products and services on time and within budget. Customer feedback forms were sent to all customers at the completion of projects or delivery of services. In FY 96, we received 202 customer responses from 319 completed

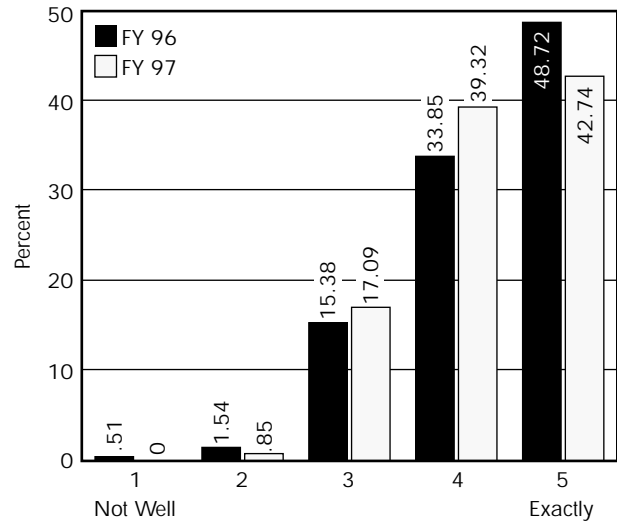
projects. In FY 97, we have, to date, received 122 customer responses from 366 projects completed. This represents a 63 percent return rate for FY 96 compared to a 33 percent rate for FY 97. It is anticipated that the return rate for FY 97 will be similar to FY 96 once feedback forms are received for projects completed at the end of the fiscal year.

The following graphs show a comparison of FY 96 and FY 97 statistics.

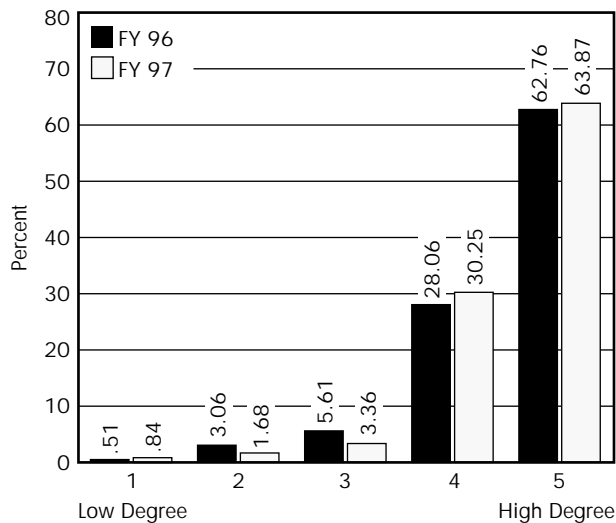
*To what degree did our product or service meet your needs?*



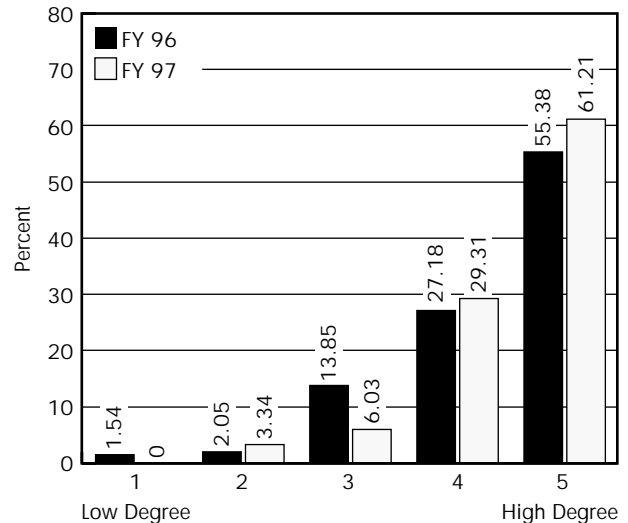
*How well was the project/service defined?*



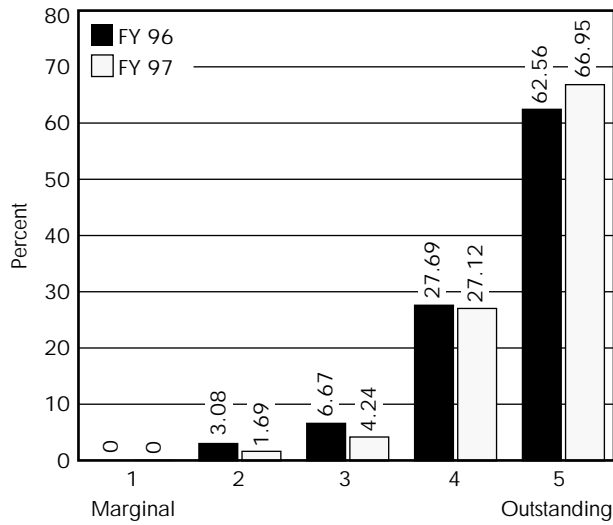
*To what degree did our product or service meet your expectations?*



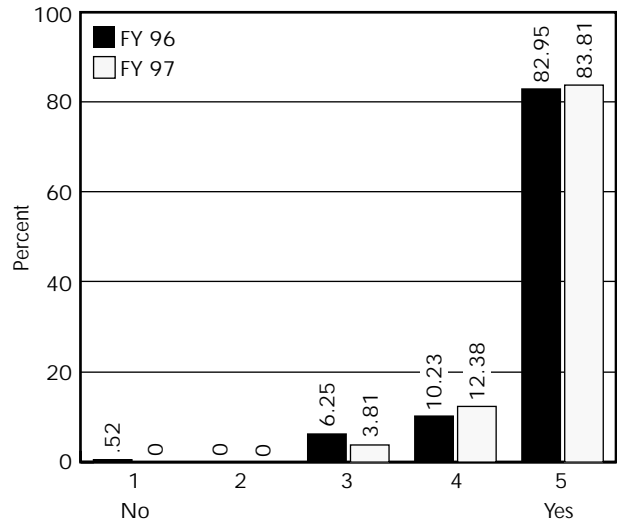
*To what degree were you kept informed on the status of your project?*



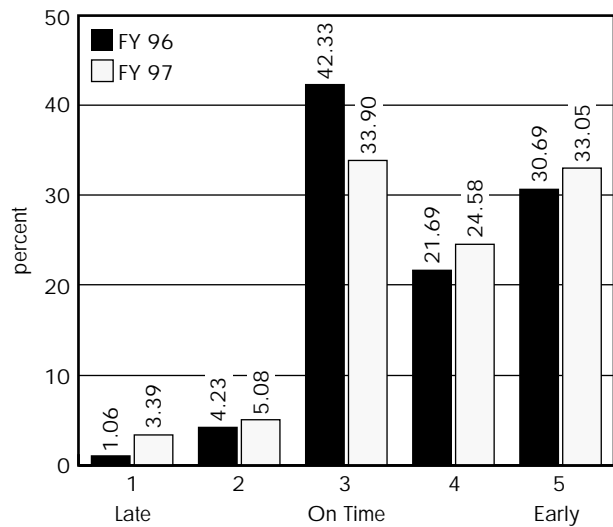
*How would you rate the overall quality of the assistance or product you received?*



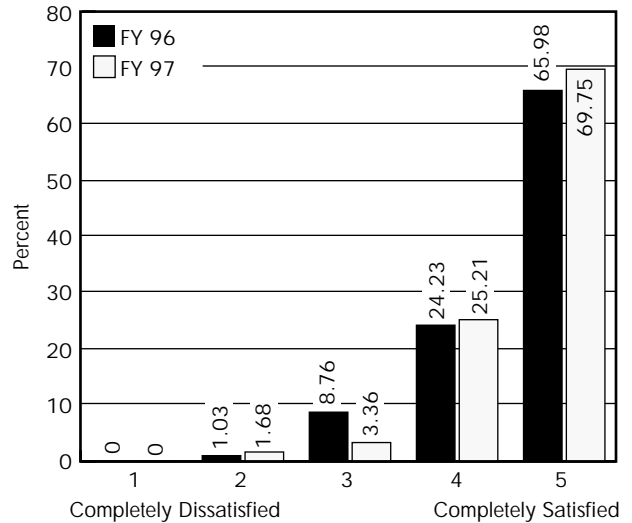
*Was the work completed within agreed-to costs?*



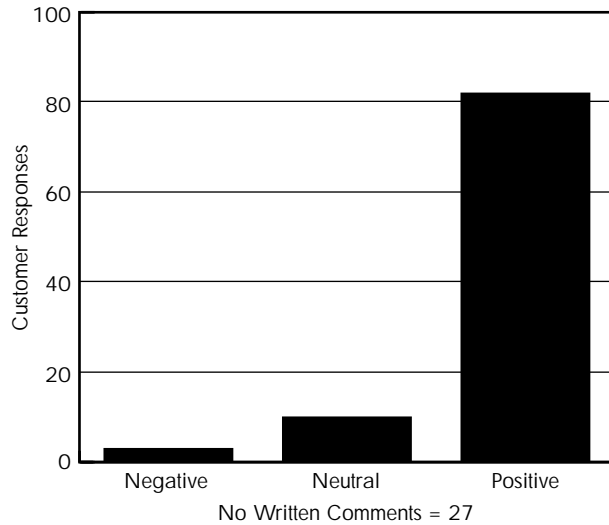
*Was the work completed within agreed-to timeframes?*



*OVERALL, how satisfied are you with your experience with NARSC?*



Customers were encouraged to provide additional comments. The written comments were analyzed based on a qualitative rating system of positive, negative, or neutral. The following graph displays the results.



Examples of comments received on the feedback forms are listed below:

*"Incredible high efficiency; we should all do so well."*

*"Thanks for letting ... provide this training. This work is very important and has an inflexible timetable."*

*"... did a great job! Worked well with our engineer and delivered what we asked for. We have other requests pending and will be seeking your assistance soon. Thanks for your help!!!"*

*"... must compliment all those involved w/project including Photogrammetry, map science, etc. Keep up good work."*

*"... 's writer/editor skills were invaluable, particularly in helping edit a document written in numerous different styles. Her assistance is greatly appreciated."*

*"... 's assistance in ARCVIEW = helping us learn how to create views + layouts has been invaluable. Without her help, we likely would have missed our deadline for completing the Castle Peak Travel Plan."*

*"... 's grasp of the OSHA and EPA regs is invaluable, as is his willingness to provide follow-up advice on audit findings, as well as advice on day to day operations problems. I rely on his expertise regularly and appreciate the resource."*

*"I really appreciate ... 's help. It certainly is a benefit to have someone (team) assist you who is familiar with the Bureau and it's policies/processes."*

*"... provided excellent support on this project as she has with on-going technical support over the time I've worked with her (two years). I hope that her support will continue to be available in the future."*

*"... did a great job presenting the workshop. I received numerous comments from DO staff about how well the topic was discussed, questions answered, and ... 's knowledge of air issues. It's obvious he puts a lot of effort in to make the class work well."*

*"... did a good job. He worked ambitiously and kept me well informed of activities and progress."*

*"... and ... did an outstanding job of providing timely technical consulting services throughout the life of this project."*

*"NARSC did a good job on this project. Nice work. Thanks."*

*"... took the project on short notice and NARSC came through in very acceptable manner. We did get a fair amount of interest—especially from students."*

*"... has done an excellent job in the design team, which is the reason we want him on the implementation team."*

*"... 's creative talents are boundless!"*

*"We received exceptional service and high quality product. The Annual Report Project was completed on time. We would like to thank ... for the superior work and the help we received from her on this project. Thank you and we look forward to working with you in the future."*

*"As always it's a pleasure to work with all the specialists from NARSC..."*

*"... did an excellent job. His assistance greatly reduced my work on this course and clearly benefitted the participants."*

*"... did an excellent job. I hope he continues to assist me with this course."*

We also received some negative comments:

*"Report generated was acceptable. However, it took a great deal of communication from this office to get the project complete - it took 4 years!"*

*"This was a very disappointing effort. I expected better coordination with the bureaus involved, more timely results and a report without major gaps in it. I feel a stronger role by NARSC would have produced a better, more complete document."*

When negative feedback is received, NARSC works with the customer to identify the problem and investigate ways of improving our service.

In addition to the comments received on the feedback forms, NARSC has received numerous unsolicited comments from customers pertaining to the services provided in FY 97. Appendix 3 provides copies of some of these unsolicited comments.

## Chapter 3—Efficiency Initiatives

A number of efficiency initiatives planned for implementation in FY 97 were previewed in the NARSC Fiscal Year 1996 Annual Report. An update on these initiatives, which were implemented to improve the way NARSC performs work, follows.

### **DEM Production**

At the beginning of FY 97, NARSC photogrammetrists were shifted from the technician-level work of digital elevation model (DEM) production to higher priority, more complex technical projects for which their abilities would be better utilized. This initiative was a result of a recommendation made in the 1995 Culp Report. Two part-time student employees were hired to produce the DEMs. This resulted in a per-hour savings of 62 percent (\$8/hour vs. \$21/hour). DEMs produced were provided to USGS in accordance with an existing Interagency Agreement. As the project to provide DEM coverage of the West approached completion, NARSC issued a memorandum to the field requesting a list of those areas that still needed to be completed or corrected.

### **Staffing Assignments**

Beginning in FY 97, NARSC began using staff vacancies as an opportunity to evaluate the current skill mix and make adjustments as reflected by the needs of our customers. Prior to recruiting for a position, NARSC now performs a detailed analysis to determine the most important skills that should be added to the staff. Queries are made of District/Field Offices and Headquarters to anticipate skill needs. Based on the response, NARSC will either recruit for identified skills or take no action until a need is identified. In FY 97, this new procedure was used prior to recruitment of a GIS Specialist and a mechanical engineer.

Staffing actions also include implementation of a sunset plan for the orderly shutdown of the cadastral survey records micrographic project upon its completion and reassignment of current project staff. Another staffing adjustment involves one underutilized employee being shifted to assignments in project management to facilitate activities on complex projects.

In addition, the Denver-based Center Directors agreed in FY 97 to share support for all of the National Centers. Money is now being contributed into a common fund that supports the needs common to all Centers, including photocopier support, telephones, vehicles, LAN maintenance, and other essentials.

### **Photo Lab Collocation with the Forest Service**

Because the FS Photo Lab and BLM NARSC Cartographic Photo Lab perform similar work, these groups collocated their operations into the NARSC Lab in Building 46 of the Denver Federal Center in early FY 97. This initiative was a result of a recommendation in the 1995 Culp Report. The collocation resulted in savings to BLM of \$12,000 per year in space-lease costs. FS contributed 33 percent of the lease cost, plus \$2,000 per year for equipment maintenance and chemicals. FS was also able to reduce their lease costs by \$32,000 per year and reduce their FTE by one, for an additional annual savings of \$45,000.

### **Space Consolidation**

As recommended by a Department of the Interior study, NARSC's Architecture and Engineering Group (RS-110) collocated operations with the National Park Service (NPS) and the Fish and Wildlife Service in the NPS Building in Denver. The collocation affords greater opportunity to share specialized equipment, collaborate on technical issues, share scarce skills, and reduce overall operations costs

for all three agencies. NARSC's Architecture and Engineering Group will continue to perform the work requested by BLM field and Headquarters offices—only the address and phone numbers have changed.

### **BLM/AEC**

As a result of negotiations started in FY 96 with the Army Environmental Center (AEC) at Aberdeen, Maryland, NARSC entered into a cost-reimbursed arrangement to provide library services to Army facility resource managers. This agreement was in addition to the national-level Memorandum of Understanding.

The agreement was finalized in mid-summer 1997, with immediate implementation of services being provided to requesters. The AEC is in the process of developing a brochure for Army resource managers to acquaint them with the services to be provided under the agreement. The brochure is based on a similar one produced for BLM employees.

The AEC desires to continue this service in FY 98. NARSC is able to supply this fully reimbursed service with little increase in operations expense and no additional personnel.

### **Fee-for-Service**

The Bureau's aerial photography lab and archive was selected by NARSC for a fee-for-service analysis as directed in the FY 97 Annual Work Plan. The resulting issue paper reported on the analysis and costs of three options for operation of the facility. The options were 1) no change—charge internal BLM customers for materials and supplies only with all labor, overhead, rents, etc., being base-funded, while fully recovering costs from non-Bureau customers; 2) full cost recovery from all customers; and 3) base-fund the entire operation and eliminate the costs of the administrative fee collection into the 5700 account. The option selected by Headquarters management was to retain the operation as it is.



## Chapter 4—Future Initiatives

A progressive business or organization continues to identify 1) new initiatives that will improve the way products and services are delivered, and 2) new products and services that are in demand by its customers. As we did last year, NARSC has selected several new initiatives that will strengthen the organization and keep its product line current. The following are some of the future initiatives that we intend to focus on in FY 98.

### **Project Scoping**

Our customers and staff have indicated that a more complete scoping of projects would significantly improve the delivery of products and services. NARSC has learned through experience with over 800 customers that scoping is the most critical element in successfully producing a product or service. Knowing this, NARSC plans to improve project scoping by having the Workflow Coordinators work closely with the project lead and customers to agree on the deliverables for each task and project.

### **Project Management**

Another area needing improvement is project management. The successful delivery of products and services often depends on complete project management throughout the process. Project management is something that requires special skills, especially for the larger, more complex projects with which NARSC is often involved. NARSC plans to designate a staff member as project manager for various projects. This staff member will bring project management skills to the team in order to improve the delivery of projects and services, on time and within budget.

### **Staffing**

NARSC must maintain a skill mix that will efficiently produce the products and services required by our customers. To meet this need, NARSC has developed an alternative staffing program using academic personnel, graduate students, and recent graduates on temporary appointments. This will allow NARSC access to state-of-the-art technology and information for specific projects without committing to a 30-year employment agreement.

During FY 97, NARSC implemented a process whereby all vacancies were scrutinized for need prior to advertising (see Staffing Assignments, Chapter 3). NARSC will continue to query District/Field Offices and Headquarters about skills needs. Based on the responses, NARSC will either recruit for the identified skill or take no action until a need is identified.

During FY 98, NARSC will evaluate both of these staffing strategies to determine their long-term effectiveness in meeting our business objectives.

### **Science**

Director Shea has identified the integration of “best science” into resource management and decisionmaking as one of his top three priorities during his tenure as Director. In keeping with this priority, NARSC will be working with the District/Field Offices, State Offices, and Headquarters to address this emerging initiative. In addition, NARSC will evaluate its current staffing to identify opportunities to support this initiative.

### **Partnerships**

NARSC has developed partnership arrangements with numerous Federal agencies over the past 2 years. During FY 98, NARSC will seek to identify additional viable partnerships to meet the needs of our customers. In addition, NARSC will be working with several universities to develop partnerships through cooperative agreements to augment the technical capability of NARSC and to implement our alternative staffing strategy.

### **National Technical Means**

A number of NARSC specialists have received the clearances necessary to work with classified data derived from National Technical Means (NTM). These data include imagery and other remotely-sensed information that is currently not available from commercial sources. NTM imagery data is characterized by high spatial resolution and has proven useful for resource management activities such as wetlands and transportation mapping,

vegetation monitoring, land conveyance, oil and gas development risk assessment, and wildland fire suppression activities. In the near future, other resource management applications will be investigated including delineation of geological hazards, identification of archaeological sites, and monitoring of route proliferation. As the data and analytical processes become more institutionalized, NARSC specialists, in cooperation with their counterparts in the field, are expected to significantly expand the current range of applications.

### **Automation of the BLM 1:100,000-Scale Administrative Map Services**

A prototype of this automated product was produced at the end of FY 97. NARSC plans to finalize an automated process to produce this very popular map series during FY 99. An automated process will permit BLM to keep these maps up to date, which will deliver a more useful product to the public and may increase sales in future years.

## Appendix 1—NARSC Customer List for FY 97

The following is a list of offices for which NARSC completed projects in FY 97. Projects are defined as work that required more than 40 hours of labor or operational funds.

### Alaska

Alaska State Office

- State Director
- Lands, Minerals, and Resources
- Engineering Services

Anchorage District  
Northern District

### Arizona

Arizona State Office

- State Director
- Resources, Planning, and Protection
- Lands and Recreation
- Engineering and Mapping Sciences
- Administration, Public Services, & Records

Kingman FO  
Yuma FO

### California

California State Office

- Ecosystem Sciences and Lands
- Lands
- Cadastral Survey
- Operations

Bakersfield District  
Bishop RA  
Eagle RA  
Redding RA  
California Desert District  
El Centro RA  
Barstow RA  
Needles RA

### Colorado

Colorado State Office

- Natural Resources
- Solid Minerals
- IRM and Access

### Colorado (continued)

- Cadastral Survey
- Engineering, Construction, & Maintenance

Little Snake RA  
White River RA  
Kremmling RA  
Montrose District  
Canon City District  
Grand Junction District  
Glenwood Springs RA

### Eastern States

- GLO Records

### Idaho

Idaho State Office

- Resource Services
- Resource Sciences
- Lands and Minerals
- Engineering
- Cadastral Survey

Burley District  
Medicine Lodge RA  
Salmon District  
Bennett Hills RA  
Coeur d'Alene District

### Montana

Montana State Office

- External Affairs
- Planning and Biological Resources
- Cadastral Survey
- Engineering

Miles City District  
Billings RA  
Dakotas District  
Lewistown District  
Judith RA  
Garnet RA

## **Nevada**

Nevada State Office

- Minerals Management
- Natural Resources, Lands, and Planning
- Engineering
- Information and Technical Support
- Wild Horse and Burro

Elko FO  
Winnemucca FO  
Carson City FO  
Ely FO  
Las Vegas FO  
Red Rocks Conservation Center  
Battle Mountain FO  
Tonopah FS

## **New Mexico**

New Mexico State Office

- Planning and Policy
- Lands and Minerals
- Geographic Sciences

Albuquerque District  
Rio Puerco RA  
Las Cruces District  
Mimbres RA  
Caballo RA  
Farmington District

## **Oregon**

Oregon State Office

- Biological Services
- Physical Sciences
- Management Services
- Realty and Records

Klamath Falls RA  
Vale District  
Prineville District  
Central Oregon RA  
Salem District  
Medford District  
Spokane District

## **Utah**

Utah State Office

- Natural Resources
- Operations

Cedar City FO  
Dixie FO  
Richfield FO  
Moab FO  
Vernal FO

## **Wyoming**

Wyoming State Office

- Resource Policy and Management
- Support Services
- Operations Services
- Information Resource Management
- GIS/Mapping Services

Rawlins District  
Great Divide RA  
Rock Springs District  
Green River RA  
Casper District

## **Washington Office**

Director  
Deputy Director  
Helium Operations  
Special Initiatives and Projects  
Renewable Resources and Planning

- Planning and Assessments
- Rangelands, Soils, Water, and Wild Horse and Burro
- Fish, Wildlife, and Forests
- Cultural Heritage, Wilderness, Special Areas, and Paleontology
- Recreation

Minerals, Realty, and Resource Protection

- Fluid Minerals
- Solid Minerals
- Lands and Realty
- Protection and Response

Communications

- Public Affairs
- Environmental Education and Volunteers

Business and Fiscal Resources

- Management Systems and Budget

**National Business Center**

- Director
- Payments
- Systems Support
- Support Services

**National Human Resources Management Center**

- Director
- Employment and Compensation
- Safety
- Information Resource Management

**National Office of Fire and Aviation**

- Director
- External Affairs
- Technical Advisor
- Program Support
- National Operations Support
- Maintenance

**National Training Center**

- Director
- Lands and Renewable Resources
- Minerals

**National Information Resources Management Center**



## Appendix 2—External Support

The following is a list of contracts and MOUs that are available to BLM offices through NARSC.

### Technical Assistance Contract

**PURPOSE:** Technical environmental assistance services. Services include technical environmental support with the following exceptions: evaluation of hazardous substance releases covered under the site evaluation contract; collection and/or analysis of environmental samples; implementation of any treatment or restoration actions.

**CONTRACTOR/AGENCY:** Dynamac

**CONTACT:** Ken Smith (COR), RS-130,  
303-236-0206

### BOR Technical Service Center

**PURPOSE:** Technical assistance services. Services provided in the general areas of civil engineering, environmental resources, geotechnical and water resources.

**CONTRACTOR/AGENCY:** BOR Technical Service Center through National MOU with BOR.

**CONTACT:** Dan Muller, RS130, 303-236-7198

### Army Technical Service Center

**PURPOSE:** Technical assistance in riparian, aquatic, wetland, terrestrial ecosystem management, recreation use management, noxious weeds, hazardous materials management, construction, and cold region engineering, mapping, remote sensing, pollution prevention, and unexploded ordinance.

**CONTRACTOR/AGENCY:** Department of Defense, US Army, Aberdeen

**CONTACT:** Mike Kirby, RS-100, 303-236-6491

### Argonne National Laboratory

**PURPOSE:** Technical assistance and support in the areas of atmospheric sciences, environmental assessments, sample collection and analysis, hazardous materials management, environmental restoration, land use planning, environmental compliance assessments, remote sensing, and GIS.

**CONTRACTOR/AGENCY:** Argonne National Laboratory via DOE MOU

**CONTACT:** Jim Turner, RS-100, 303-236-0840

### Temporary Skills

**PURPOSE:** Procurement of temporary workers having specific skills. In general, CASU provides individuals with specific skills based on the needs and period specified for the work to be completed. Individuals are procured through a CASU contract/agreement and are not NARSC employees. However, supervision of the individuals' work would be the responsibility of NARSC.

**CONTRACTOR/AGENCY:** CASU

**CONTACT:** Dave Schafersman, RS-100,  
303-236-1143

### A&E Planning, Design and Contracting IA

**PURPOSE:** Expand partnering opportunities for agencies with planning, design, and construction capabilities.

**CONTRACTOR/AGENCY:** Interagency Agreement between NPS, BLM, BIA, FWS, BOR, USFS, and Indian Health Service.

**CONTACT:** L.J. Porter, RS-110, 303-987-6864

### Site Evaluation Contract

**PURPOSE:** Evaluation of Hazardous Substance Releases. Services include: soil, water, and air sampling and analysis; removal site evaluations; engineering evaluations/cost analysis; remedial evaluations (preliminary assessments and site investigations); general site evaluation and analysis.

**CONTRACTOR/AGENCY:** CCJM

**CONTACT:**

Karl Ford (COR), RS-130, 303-236-6622  
Steve Barrell (COR), RS-130, 303-236-0148  
Brent Lewis (COR), RS-130, 303-236-0550  
Ken Morin (COR), RS-130, 303-236-6418

### Facility Assessment IA

**PURPOSE:** Comprehensive assessment of facilities regarding safety, health, and the environment (CASHE).

**CONTRACTOR/AGENCY:** Army Corps of Engineers (IA)

**CONTACT:** Ken Morin, RS-130, 303-236-6418

### Sedimentation MOU

**PURPOSE:** Develop equipment or methodology for sediment studies and monitoring

**CONTRACTOR/ AGENCY:** Army Corps of Engineers (MOU)

**CONTACT:** Jim Fogg, RS-130, 303-236-0539

### Rare Plant Conservation

**PURPOSE:** Produce seed and conduct biological research for rare plant species.

**CONTRACTOR/AGENCY:** Center for Plant Conservation (MOU)

**CONTACT:** Phil Dittberner, RS-140,  
303-236-1833

### Ecological Mapping

**PURPOSE:** Develop databases for ecological mapping.

**CONTRACTOR/AGENCY:** Multi-Agency MOU (FS, NBS, EPA, FWS, NPS, NRCS)

**CONTACT:** Steve Gregonis, RS-120,  
303-236-1958

### Digital Elevation Models (DEMs)

**PURPOSE:** An interagency workshare to produce DEMs over BLM priority areas. Via the workshare, for every DEM produced by NARSC, USGS will produce a DEM according to BLM priorities.

**CONTRACTOR/AGENCY:** USGS National Mapping Division

**CONTACT:** Dave Kett, RS-120, 303-236-1730

### Printing and Distribution of Mapping Products

**PURPOSE:** An interagency agreement to facilitate the printing, folding, shipping, and distribution of BLM maps. Only certain types of maps are covered by this agreement.

**CONTRACTOR/AGENCY:** USGS National Mapping Division

**CONTACT:** Bill Jackson, RS-120, 303-236-7345

### BOR A&E Contract

**PURPOSE:** Provide a tool for enhancing planning and design capabilities of DOI agencies. This is a task order contract for work performed.

**CONTRACTOR/AGENCY:** Interagency Agreement with BOR. Contractor is Woodward/Clyde.

**CONTACT:** L.J. Porter, RS-110, 303-987-6864



## Appendix 3—Examples of Unsolicited Customer Comments



## Appendix 4—Projects Completed in FY 97

NARSC	#	PROJECT	OFFICE
NS	AK-025	PRP Search for Red Devil Mine	AK-040
NS	AK-006	Tanana Tank Site Evaluation (SE)	AK-060
RA	AK-001	Development of Alternative Dispute Resolution Plan	AK-910
IC	AK-001	Reengineering Land Transfer in Alaska	AK-930
NS	AK-023	WRR Assistance-Power Site Cancellation Ship Creek	AK-930
AE	AK-006	Emergency Generator for Building 1513 AFS	AK-956
AE	AK-011	Ft. Yukon Electrical Inspection	AK-956
AE	AZ-007	Foundation Design for Kingman Office Metal Building	AZ-025
AE	AZ-003	Parker Strip Visitor Contact Station Submittals	AZ-050
NS	AZ-032	Draft PRP Demand Letter	AZ-050
NS	AZ-033	Quail Hollow PRP Followup	AZ-050
NS	AZ-031	Analysis and Mapping of Flat-Tailed Horned Lizard Habitat in Arizona Using LANDSAT TM Satellite Data	AZ-050
NS	AZ-021	DOI Borderlands/San Pedro River Basin	AZ-910
NS	AZ-030	Assist AZ with Development of Scope of Work for San Pedro Watershed Improvement Project	AZ-930
NS	AZ-020	Empire Ranch Landscape Analysis (Cienega Riparian Area)	AZ-930
NS	AZ-013	Assist with Virgin River Instream Flow Assessment (One project for NV, AZ, and UT)	AZ-930
NS	AZ-028	Site Evaluation and Sample Analysis for Arizona AML Sites	AZ-931
NS	AZ-029	CASHE Assessment - Yuma District	AZ-931
GS	AZ-009	100K Map Revision/Reprint	AZ-940
AE	AZ-001	San Pedro Riparian Natl. Cons. Area Visitors Center	AZ-941
GS	AZ-014	Amended Protraction Diagram Training/Support	AZ-952
NC	DC-027	BLM Annual Report Writing/Editing/Graphics	BC-600
NC	DC-031	Prompt Payment Interest Video	BC-630
NC	DC-023	NBC Monthly Newsletter	BC-640
NC	DC-025	Public Land Statistics Data	BC-650
NC	DC-026	PLS Editorial Management	BC-650
AE	CA-009	Design of Washburn Road	CA-012

<b>NARSC</b>	<b>#</b>	<b>PROJECT</b>	<b>OFFICE</b>
NS	CA-043	Scoping for the Start of the Expert Systems Analysis of the Big Game Data and Explore the Use of Expert Systems for Small and Nongame Species Interaction Analysis	CA-026
NS	CA-023	Provide Assistance on Indian Creek Restoration Project	CA-059
AE	CA-008	Dos Palmas Seismic & Electrical Retrofit	CA-060
NS	CA-033	CASHE Assessment - Cal Desert District, El Centro and Palm Springs RAs	CA-060
GS	CA-005	West Mohave/Route Inventory Project	CA-063
NS	CA-044	Ground Water Analysis for Revised EIS: Imperial Project	CA-067
NS	CA-003	Afton Canyon SI	CA-068
NS	CA-034	Review and Comment on Release Remedial Plan and Health and Safety Plan for Pipeline Releases, Molycorp	CA-069
NS	CA-037	Assist Indian Creek Restoration Project	CA-360
NS	CA-009	Landers Landfill PA	CA-931
GS	CA-008	Harper Lake Topo Project	CA-940
AE	CA-007	Flood Damage Assessment of Briceburg Bridge	CA-940
GS	CA-001	DEM Production - State's OMB A-16 Submission	CA-940
GS	CA-006	Ukiah Aerial Photo Acquisition (CA-96-AC)	CA-942
NS	CO-034	Evaluating Potential Impact of Nahcolite Extraction on Ground Water in the Piceance Basin	CO-017
AE	CO-008	Analysis of Exterior Lighting Problems at the Anasazi Heritage Center	CO-037
NS	CO-031	Saguache Mill Site PRP Investigation	CO-050
NS	CO-032	Monitor Well Drilling for Water Supply for Recreation Site (Penitente Canyon)	CO-052
GS	CO-003	Southeast Colorado Interagency LANDSAT Vegetation Classification Project	CO-052
NS	CO-033	CASHE Assessment - Grand Junction District and Western Slope Fire Coordination Center	CO-070
NS	CO-024	Hydrologic Terrain Analysis in ARC/INFO	CO-070
NS	CO-005	Complete Climate Station Project	CO-071
NS	CO-026	Black Ridge Desert Bighorn Sheep Study	CO-078
GS	CO-014	Castle Peak Travel Plan	CO-078
IC	CO-008	Castle Peak Travel Management Plan	CO-078
NS	CO-019	HAZWOPER Training, XRF Analysis and Consultation for Colorado School of Mines Students Working on BLM Mining Sites	CO-920
RA	CO-004	Transfer of PAAS/MMS Solid Minerals Report	CO-920

<b>NARSC</b>	<b>#</b>	<b>PROJECT</b>	<b>OFFICE</b>
RA	CO-003	Represent BLM on Colorado Interagency Groups (ie., Drought Task Force, Air Quality Control Commission)	CO-932
GS	CO-004	Landform Analysis Requirements and Other GIS Modeling for Soil Survey Mapping and BLM-Wide Transfer.	CO-932
IC	CO-007	Poster - Weed Free Feed and Bedding on BLM Lands	CO-933
NS	CO-027	National Resource Inventory (NRI) on Public Lands in Colorado (Test State)	CO-933
GS	CO-012	Imagine 8.2 Training	CO-954
GS	CO-008	100K Map Revision/Reprint	CO-954
GS	CO-010	Geodesy/GPS Technical Support	CO-956
IC	ES-001	History of Public Domain in Mississippi	ES-963
NC	FA-021	Convert 1964 - 1979 Fire History Database from Aspen to Informix	FA-100
NC	FA-019	Alturas Fire GIS Project Part 1	FA-100
NC	FA-024	Elko Fire GIS Project	FA-100
NC	FA-016	Represent BLM on Technical Committee of Grand Canyon Visibility Transport Commission	FA-100
NC	FA-020	Wyoming Fire GIS Project	FA-100
NC	FA-017	Liaison for Smoke Management Activities (FY 97)	FA-105
NC	FA-027	Brochures Dealing With Various Aspects of Fire Management in BLM	FA-106
NC	FA-026	Exhibit(s) Depicting the Role of Fire and Fire Management in BLM	FA-106
NC	FA-015	Edit Fire Business Model Report	FA-107
NC	FA-023	1997 Version of Wildland Fire Software Catalog	FA-107
NC	FA-022	1997 Version of Wildland Fire World Wide Web Page Catalog	FA-107
NC	FA-007	Training Building Accessibility Upgrade	FA-200
NC	FA-006	Convert ASPEN/SACS Data Base Fire Data to Point Data in ARC/INFO	FA-205
NC	FA-028	Plans for New Sanitary Facilities for Building 410-A at NIFC	FA-280
IC	WO-038	Editing/Layout of Analysis of Chromium in Amine/Glycol (TN-400)	HE-923
NC	DC-008	Human Resource Management Guide (Desk Guide for Managers and Supervisors)	HR-210
NC	DC-020	Building 50 Safety Plan Drawings	HR-240
NC	DC-033	Update EEO Poster for National Centers and Graphic Design for Cultural Diversity Poster	HR-250
NS	ID-033	INEL Resource Restoration Plan	ID-035
NS	ID-030	Beam Lane PCP Site Evaluation	ID-040

<b>NARSC</b>	<b>#</b>	<b>PROJECT</b>	<b>OFFICE</b>
NS	ID-037	BLM-Wide Environmental Compliance/Pollution Abatement Plan for ECT	ID-930
NS	ID-036	Revise Tech. Note 390 for ECT	ID-931
NS	ID-016	Maintain HazMat IM/IB Data Base for the BLM Environmental Compliance Team.	ID-931
RA	ID-005	Assist with Snake River Basin Adjudication. Finish Basin 34; Also Testify and Consult	ID-931
NS	ID-028	Western Regional Corridor Study Data Conversion	ID-933
RA	ID-006	Western Regional Corridor Study Data Conversion	ID-933
AE	ID-010	Salmon and Idaho Falls District Condition Surveys	ID-956
AE	ID-002	Blackwell Island Recreation Site Conceptual	ID-956
AE	ID-006	Steck Rec. Site Phase II & III	ID-956
GS	ID-018	100K Map Revision/Reprint	ID-956
AE	ID-001	Cottonwood Recreation Site Phase II	ID-956
AE	ID-015	Design for Blackwell Island Recreation Site	ID-956
GS	ID-021	Riparian Boundary Investigation, Snake River, Burley Idaho	ID-957
GS	ID-024	Riparian Boundary Investigation Along the Yakima River Near Wapato, Washington	ID-957
GS	ID-022	Geodesy/GPS Technical Support	ID-957
NS	MT-018	Mosby Refinery Statements of Work	MT-020
GS	MT-024	Landsat Imagery for Pryor Mountain Wild Horse Range	MT-025
NS	MT-016	Belle Eldridge Abandoned Mine - South Dakota	MT-026
GS	MT-018	Support in Acquiring Photography for Use in Change Detection and Monitoring Project in Dickinson District	MT-030
GS	MT-017	Assistance in Purchase, Archival, and Delivery of TM Satellite Scenes of the Lewistown District for Use in Mapping Vegetation	MT-061
NS	MT-020	Willow Creek Watershed Analysis/Valley County	MT-068
GS	MT-022	Photogrammetric Boundary/Meanders Survey on Clark Fork River	MT-074
IC	MT-003	Montana Riparian - The Blackfoot Challenge Video	MT-912
NS	MT-007	Montana Climate Summaries	MT-923
GS	MT-020	Scanning of 75-100 Geology, Soils, etc., Mapping Themes for State Office Internal Applications	MT-926
GS	MT-023	Scanning Support for South Dakota EIS	MT-926
GS	MT-015	Digital OQ Generation (Bar V Ranch)	MT-926
GS	MT-025	Scanning and Photo Lab Services	MT-926
GS	MT-011	100K map revision/reprint	MT-926
GS	MT-026	Eye of the Needle Flight and Photo Acquisition Coordination	MT-926

<b>NARSC</b>	<b>#</b>	<b>PROJECT</b>	<b>OFFICE</b>
AE	MT-001	Devils Elbow Recreation Site Conceptuals	MT-931
AE	MT-003	Billings Air Tanker Base	MT-931
AE	MT-006	Anita Dam Failure Board of Inquiry	MT-931
AE	MT-002	Lewistown DO HVAC Retrofit	MT-931
NC	DC-028	Renovation of Building 40 for NIRMIC	NI-100
NC	DC-032	Project Plan for Release 2 (This project plan is for the ALMRS components after IOC and includes MTP, spatial displaces, etc; Release 2 is not the Resources Option)	NI-100
NC	DC-022	Booth and Brochure for GIS/LIS 1996 Annual Conference and Exposition	NI-101
NC	DC-007	Development of Amended Protraction Diagram Export Into GCDB/IOC	NI-113
NS	NM-012	Provide Assistance on Rio Puerco Ecosystem Analysis	NM-017
NS	NM-009	Assist on Little Rock EIS	NM-036
NS	NM-010	Assist on Copper Flats EIS	NM-037
NS	NM-019	Review Documents and Draft PRP Letters	NM-070
RA	NM-005	Automated Fluid Minerals Support System Team (AFMSS) (FY 97)	NM-932
RA	NM-004	Development Support for AFMSS Help Desk	NM-932
GS	NM-007	100K Map Revision/Reprint	NM-952
AE	NV-019	Elko District Office Electrical	NV-010
NS	NV-056	GPS to GIS Conversion and ARC Coverage Gen.	NV-020
NS	NV-051	Technical Note on the Construction of Desert Bighorn Sheep Water Catchments	NV-030
NS	NV-062	Develop Ground Water Monitoring Plan for Study of Mesquite Areas in Southern Nevada	NV-050
AE	NV-014	Red Rocks Visitor Center Fee Collection Station	NV-056
AE	NV-022	Red Rock Canyon Lower Loop Road	NV-056
AE	NV-007	Red Rock Canyon Visitor Center HVAC	NV-056
AE	NV-024	Evaluate Air Tanker Base Retardant Containment, Collection and Disposal	NV-060
AE	NV-023	Tonopah Office Building Phase II Design	NV-060
AE	NV-027	Watt Street Housing Project, Battle Mountain NV	NV-060
NS	NV-008	Norse Windfall SI	NV-920
NS	NV-020	Stewart/Bauer Millsite SE	NV-920
NS	NV-060	Air Resource Management Introductory Training	NV-920
NS	NV-005	Monite Preliminary Assessment, Engineering Evaluation/ Cost Analysis, Treatability	NV-920

<b>NARSC</b>	<b>#</b>	<b>PROJECT</b>	<b>OFFICE</b>
NS	NV-016	Standard Slag PA	NV-920
NS	NV-003	Argentum Millsite Site Inspection (SI)	NV-920
NS	NV-035	Provide Assistance Las Vegas Valley Water District Applications and Ground Water Study	NV-930
AE	NV-026	Indian Creek Master Plan	NV-930
AE	NV-017	Pony Springs Fire Station Design	NV-930
AE	NV-018	Indian Creek Restroom Accessibility	NV-930
AE	NV-010	Battle Mountain Air Tanker Base	NV-941
AE	NV-016	Caliente Field Office Interior Design	NV-941
GS	NV-006	100 Map Revision/Reprint	NV-946
RA	NV-006	Analysis of Wild Horse and Burro Preparation Facilities	NV-960
RA	NV-007	User Representative and Technical Support for Wild Horse and Burro Information System (WH&BIS)	NV-960
NS	OR-035	Jacob's Reservoir Decommissioning	OR-014
AE	OR-020	Vale Oregon Projects	OR-030
AE	OR-022	Jordan Valley Guard Station - Electric & Mechanical Review	OR-030
AE	OR-018	Rabbit Mine - Millhouse Electrical/Mechanical	OR-030
NS	OR-028	Training on TR 1737-9 and TR 1737-11, Riparian	OR-050
NS	OR-027	Training on TR-1737-12	OR-050
RA	OR-002	Represent BLM on Fed. Geographic Data Committee	OR-050
GS	OR-005	Large Scale Remote Sensing of Noxious Weeds	OR-054
AE	OR-013	Elkhorn Valley Recreation Site Electrical	OR-080
AE	OR-015	Yellowstone Creek Culvert Design Review	OR-080
AE	OR-016	Yellow Bottom Retaining Wall Design Review	OR-080
AE	OR-029	Bible Creek & Nestucca River Roads Paving Project	OR-082
NS	OR-029	Onsite HAZMAT Facilities Management Instruction for BLM and Forest Service Managers	OR-110
AE	OR-027	Turnpoint Light Station	OR-130
AE	OR-019	NHOTC Fee Booth - Electrical/Mechanical	OR-130
NS	OR-005	Kabba-Texas Engineering Evaluation/Cost Analysis (EE/CA), Design and construction	OR-130
NS	OR-024	NRDA Support for Hanford Reservation	OR-130
NS	OR-026	Consultation on Lamfoot Mine	OR-130
NS	OR-022	Department of Transportation HAZMAT Training	OR-931
NS	OR-002	Midnite Mine Contingency Plan Tech. Assistance	OR-932
NS	OR-018	CASHE Assessment of Coos Bay District	OR-932
NS	OR-012	Provide Assistance on Lakeview Ecological Site Inventory/Survey	OR-932
NS	OR-023	CASHE Assessment - Salem District	OR-932
GS	OR-002	100K Map Revision/Reprint	OR-942



<b>NARSC</b>	<b>#</b>	<b>PROJECT</b>	<b>OFFICE</b>
AE	OR-001	Yaquina Head Outstanding Nat. Area Visitor Center	OR-950
IC	OR-001	National Archive Use Training	OR-958
NC	TC-042	Hazmat Course 1703-2 (FY 97)	TC
NC	TC-056	Provide VRM Training Assistance for the Electric System Course, NTC-1730-21	TC
NC	TC-029	Construction Specifications Writing Training Course	TC
NC	TC-045	Hazmat Course 1703-1 NRDA (FY 97)	TC
NC	TC-057	Provide VRM Course Design Assistance for the Telecommunications Site Management Course	TC
NC	TC-009	Development and Integration of NRDA Training	TC
NC	TC-050	Instruction at Intermediate Construction & Inspection, NTC Course # 9100-02 (FY 97)	TC
NC	TC-058	Provide VRM Assistance for the Introduction to Recreation and Visitor Services Course, NTC # 8300-10	TC
NC	TC-046	Instruction for Specifications Writing Course, NTC Course # 9100-13 (FY 97)	TC
NC	TC-039	Ground Water Hydrology (NTC Course 7000-18)	TC
NC	TC-041	Hazmat Course 1703-3 (FY 97)	TC
NC	TC-054	Develop/Conduct Interagency Weather and Climate Applications Course	TC
NC	TC-059	Provide Assistance to the NTC Design Team for Proposed NTC HAZMAT Course 1703-15	TC
NC	TC-049	HAZMAT Course 1703-10 (FY 97)	TC
NC	TC-063	Teach HAZMAT Course 1703-15, Principles of Environmental Sampling	TC
NC	TC-037	Watershed Rehab Course #7000-11	TC
NC	TC-044	Hazmat Course 1703-14 (FY 97)	TC
NC	TC-040	Non-Point Source Pollution (7000-9)	TC
NC	TC-052	Development of a Landscape Analysis Approach for Resource Management	TC
NC	TC-053	Digital Remote Sensing Course Support	TC
NC	TC-055	Redesign and Instruct for HAZMAT Course 1703-9	TC
NC	TC-035	Develop BLM Air Quality Course	TC
NC	TC-048	Instruction at Geo-Data Collection Course, NTC # 1730-11 (FY 97)	TC
NC	TC-047	Survey Data Adjustment Course, NTC Course # 9600-10 (FY 97)	TC
NC	TC-061	Hazardous Materials Management Training Task Team	TC
IC	UT-002	Grand Staircase-Escalante National Monument Scoping Package Fold-outs	UT-030

<b>NARSC</b>	<b>#</b>	<b>PROJECT</b>	<b>OFFICE</b>
GS	UT-021	Update BLM & International Symbols for ArcView and ARC/INFO	UT-040
NS	UT-010	Provide Ground Water Assistance on Sand Hollow EIS & Land Exchange	UT-045
NS	UT-016	Hydrologic Analysis for Water Rights Hearing	UT-050
NS	UT-018	Evaluating the Effects of Raising the Flow of the Green River on BLM Structures Below the Flaming Gorge Dam	UT-080
NS	UT-028	Technical Air Quality Assistance on Ferron Natural Gas EIS	UT-922
NS	UT-019	CASHE Assessment - Moab District	UT-932
NS	UT-008	Provide Assistance on Ecological Site Correlation & Condition Analysis	UT-932
NS	UT-022	Utah Climate/Air Quality Support	UT-932
NS	UT-005	Frye Canyon Remedial Pilot Study (EPA Funded Research)	UT-932
AE	UT-010	Landscape Rehabilitation/Enhancement, Little Sahara Visitor Contact Station, Utah	UT-933
NS	UT-029	Technical Air Quality Assistance on Price River Coal Bed Methane EIS	UT-933
NS	UT-027	Instructor for Environmental Law Course	UT-934
NS	UT-023	Bureauwide Process for Producing Community Profiles - Prototype in Utah	UT-934
GS	UT-003	Topographic Site Mapping Creek Pasture	UT-940
AE	UT-008	Sand Island Campground	UT-941
GS	UT-022	Utah Wilderness Inventory Review Photo Interpretation	UT-943
GS	UT-009	100K Map Revision/Reprint	UT-943
GS	UT-024	BLM & FS Amended Protraction Diagram Production & Development	UT-943
GS	UT-025	Geodesy/GPS Technical Support	UT-943
IC	WO-049	Wild Horse and Burro Congressional Report	WO-100
RA	WO-142	Organization and Arrangements for National Science Council Meeting in Ft. Collins, Colorado	WO-100
IC	WO-035	Provide BLM-wide Professional Library Services (FY 97)	WO-101
NC	DC-035	Poster Materials for C of C Event	WO-107
NC	DC-034	Graphics for ADR Notebook	WO-107
RA	WO-072	History of Public Water Reserves	WO-200
RA	WO-035	Represent BLM on Colorado River Basin Salinity Control Groups	WO-200
RA	WO-124	Western Gov. Association - Air Quality Initiative	WO-200
RA	WO-097	Represent BLM on Interagency Monitoring of Protected Visual Environments Steering Committee (FY 97)	WO-200
RA	WO-096	Represent BLM on Western States Air Resources Council (FY 97)	WO-200

<b>NARSC</b>	<b>#</b>	<b>PROJECT</b>	<b>OFFICE</b>
RA	WO-107	Support on Development/Reviews of Data Standards (FY 97)	WO-200
GS	WO-001	Maintenance of 1:100,000 Scale Maps Specifications & Standards	WO-210
IC	WO-036	Update of Land Status Brochure	WO-210
RA	WO-143	NARSC Input for AD-200 Diversity Plan	WO-210
RA	WO-082	BLM Participation on USFS GIS Implementation Teams/ Focus Areas	WO-210
RA	WO-098	Bureauwide Climate Liaison (FY 97)	WO-210
GS	WO-032	Management of Interagency Map Printing Activities (FY 97)	WO-210
RA	WO-099	Bureauwide Air Quality Liaison (FY 97)	WO-210
GS	WO-028	Assistance for Aerial Photography (FY 97)	WO-210
RA	WO-100	Alternative Dispute Resolution Field Support (FY 97)	WO-210
GS	WO-020	Geospatial Digital Data Project (Interagency, DWO Lead)	WO-210
GS	WO-039	National Aerial Photography (NAP) Coordination (FY 97)	WO-210
GS	WO-033	Interagency Coordination of DEM Production (FY 97)	WO-210
GS	WO-030	Technical Consultation with WO Geo Sciences (FY 97)	WO-210
GS	WO-037	Management of BLM Satellite Imagery Repository (FY 97)	WO-210
GS	WO-036	Management of BLM Aerial Photo Lab and Archive (FY 97)	WO-210
GS	WO-034	Consultation, Support, Training for DEM Production (FY 97)	WO-210
GS	WO-035	Coordination with National Advance Remote Sensing Applications Program (NARSAP) (FY 97)	WO-210
GS	WO-031	Interagency Geo Science Coordination (FY 97)	WO-210
GS	WO-040	NSDI Coordination (FY 97)	WO-210
GS	WO-029	Maintenance of 100K Maps Specifications and Standards	WO-210
RA	WO-084	Prepare Supplement to Tech Ref. 4400-5	WO-220
RA	WO-020	Conduct the Annual Meeting of the BLM Desert Bighorn Advisory Council.	WO-220
RA	WO-132	Host Water Quality Meeting	WO-220
RA	WO-133	Analysis of GABS to Determine Work Necessary to Bring it to Year 2000 Compliance	WO-220
RA	WO-070	Develop Hydrologic Protocols for Watershed Analysis	WO-220
RA	WO-141	Policy Support for WO-220	WO-220
IC	WO-034	Riparian Report to Congress	WO-220
RA	WO-149	Rangeland Health Assessment Training	WO-220
NS	WO-018	Coordinate Preparation & Release of: TR 1737-14, Grazing Management in Riparian Area	WO-220
RA	WO-014	Modify the Grazing Authorization and Billing System (GABS) (to Incorporate Trespass Tracking Capabilities.)	WO-220
RA	WO-110	Represent BLM on Technical Committee of National Cooperative Soil Survey (FY 97)	WO-220

<b>NARSC</b>	<b>#</b>	<b>PROJECT</b>	<b>OFFICE</b>
RA	WO-108	IDS/IDSU User Representative (FY 97)	WO-220
RA	WO-013	Modify the Grazing Authorization and Billing System (GABS) (to Accommodate Changes in the Grazing Regulations.)	WO-220
RA	WO-118	Represent BLM on W-6 Technical Advisory Committee (Plant Genetic Resource Conservation and Utilization)	WO-220
RA	WO-131	Burn Area Emergency Rehabilitation Team	WO-220
RA	WO-092	RIPS User Representative (FY 97)	WO-220
RA	WO-091	GABS User Representative (FY 97)	WO-220
RA	WO-116	Represent BLM on Federal Interagency Sedimentation Project	WO-220
RA	WO-093	Investment Analysis Model (IAM) User Representative (FY 97)	WO-220
NS	WO-019	Coordinate BLM/State Establishment of Ecosystem-Based Management Demonstration Areas Encompassing Mountain Sheep Habitat	WO-230
RA	WO-130	Host Interagency Timber Salvage Review Meeting	WO-230
RA	WO-011	Develop Interface and Users Guide for the Integrated Habitat Inventory and Classification System (IHICS).	WO-230
NS	WO-039	BLM Display for SAF Convention in Albuquerque NM	WO-230
RA	WO-122	Serve on "Sample Inventory and Monitoring of Natural Resources and the Environmental Working Group" of FGDDC Committee	WO-230
NS	WO-053	Represent BLM at Western States & Provinces Deer/Elk Workshop	WO-230
NS	WO-020	Participate on Interagency Stream Corridor Restoration Handbook Project	WO-230
RA	WO-102	Materials Disposal System (TSIS) and SFP User Representative (FY 97)	WO-230
RA	WO-103	Support Forest Vegetation Information System (FY 97)	WO-230
RA	WO-106	BLM/Rocky Mountain Elk Foundation/Wild Sheep Liaison (FY 97)	WO-230
RA	WO-114	User Representative for SSST, IHICS, WORDS, RAIDS, PLS, RAIDS	WO-230
RA	WO-090	Plants Data Base (FY 97)	WO-230
RA	WO-052	Migrate Archaeological Site Data to Target System Platform	WO-240
RA	WO-051	Assist with Presentations Regarding Cultural Heritage Program Process Modeling	WO-240
RA	WO-089	Assist on National Archaeological Data Base Access (FY 97)	WO-240
RA	WO-088	Provide Assistance to Cultural Heritage Program Data Team (FY 97)	WO-240

<b>NARSC</b>	<b>#</b>	<b>PROJECT</b>	<b>OFFICE</b>
RA	WO-126	Provide Bureauwide VRM Program Coordination/Services (FY 97)	WO-250
RA	WO-147	Change in Lease Account Status (LAS)	WO-300
RA	WO-111	MMS Liaison and Data Transfer/Special Projects (FY 97)	WO-300
RA	WO-146	Attend and Report on RSFA Meetings	WO-300
RA	WO-087	Provide Nationwide User Support for AIRS and MRO.	WO-310
RA	WO-095	Collect/Analysis/Presentation of Coal and Solid Leasable Minerals Data (FY 97)	WO-320
RA	WO-094	Distribute MMS Production, Accounting, Auditing and Solid Leasable Minerals System Data (FY 97)	WO-320
IC	WO-048	Guide to Geographic Sciences in the BLM	WO-350
RA	WO-129	Presentation of Paper at Waterpower '97	WO-350
GS	WO-044	Status Data Base for Clearing House	WO-350
GS	WO-041	Interagency Geospatial Digital Data Project	WO-350
IC	WO-040	Store Masters of Cadastral Survey Microfilm, WO IMs, IBLA Decisions and 35mm of Tract Books (FY 97)	WO-350
IC	WO-041	Microfilm & Photographic Services (Cadastral & Non-Cadastral) (FY 97)	WO-350
AE	WO-038	Water Power & Reservoir Resources Lead	WO-350
IC	WO-039	Microfilm Cadastral Survey Notes and Plats for States (FY 97)	WO-350
RA	WO-112	Member of the Cost Recovery Team (Revenue Enhancement Team)	WO-350
AE	WO-044	Response to DOI Peer Review of BLM's Dam Safety Program	WO-360
NS	WO-040	Strategy Options for Use of CERCLA Sec. 106/122	WO-360
NS	WO-005	HazMat TSDF Audits	WO-360
NS	WO-038	Analysis of NARSC Existing Data and Orders in Solicitor's Handbook	WO-360
NS	WO-034	Inspection of USBM Tuscaloosa Lab	WO-360
RA	WO-125	National AML Historical Database	WO-360
AE	WO-045	Plan Response for Dam Safety Review	WO-360
RA	WO-127	DOI NRDAR Database Task Force	WO-360
RA	WO-109	National Liaison for BLM's Abandoned Mine Lands Program (FY 97)	WO-360
NS	WO-042	HAZMAT Information Hotline (FY 97)	WO-360
NS	WO-044	HAZMAT TSDF Audits (FY 97)	WO-360
AE	WO-028	Dam Safety BLM Lead	WO-360
NS	WO-043	HAZMAT Contract Administration of Technical Assistance Contract (FY 97)	WO-360
NS	WO-045	HAZMAT CASHE Contract Administration C of E (FY 97)	WO-360

<b>NARSC</b>	<b>#</b>	<b>PROJECT</b>	<b>OFFICE</b>
RA	WO-139	National AML Safety Brochure	WO-360
RA	WO-140	BLM AML Homepage	WO-360
AE	WO-036	Lumberjack Program for Road Design	WO-360
RA	WO-104	NRDA NPR Programs DOI Team (FY 97)	WO-360
NS	WO-049	NRDA Screenings	WO-360
RA	WO-105	NRDA Program Administration (FY 97)	WO-360
NS	WO-051	PRP Support	WO-360
AE	WO-043	Revise Current and Develop New Guide Specifications	WO-360
AE	WO-032	User Representative and Technical Support for Facilities Inventory Maintenance Management System - FIMMS	WO-360
GS	WO-042	Grand Staircase-Escalante National Monument Map	WO-420
RA	WO-121	Determine Minimum BLM Environmental Documentation Standards and NEPA Requirements for Military Withdrawals/ Extensions	WO-480
IC	WO-044	Collecting Fossils on America's Public Land Forests	WO-550
IC	WO-031	Format/Layout of Weed Brochure	WO-600
IC	WO-043	Volunteer Annual Report 1995	WO-600
IC	WO-001	Americore Volunteer Program Video	WO-600
IC	WO-013	BLM Photo/Slide Library on Compact Disk (CD)	WO-600
IC	WO-045	Tool Kit Guide	WO-650
IC	WO-046	Ecosystem Matters (Sticker)	WO-650
IC	WO-050	National Public Lands Day Poster - 1997	WO-650
RA	WO-136	Billings & Collections Reengineering Team	WO-800
AE	WO-031	Bridge Safety BLM Lead	WO-880
AE	WO-029	Metric BLM Lead	WO-880
AE	WO-030	Seismic Safety in Buildings - BLM Lead	WO-880
AE	WO-026	Intermodal Surface Transport Act ISTEA Lead	WO-880
AE	WO-027	Value Engineering BLM Lead	WO-880
AE	WO-039	DOI Planning Design - Coordination Council	WO-880
AE	WO-040	Denver Club Fed.	WO-880
AE	WO-041	Engineering Advisory Team	WO-880
AE	WO-042	National Lead for Energy Conservation	WO-880
AE	WO-037	Recreation Management Information System (RMIS) Lead	WO-880
AE	WO-035	Project Access Team Member	WO-880
NS	WY-018	Technical Air Quality Assistance on Green River RMP	WY-040
AE	WY-019	Pinedale Storage Building and Warehouse Repair	WY-040
NS	WY-007	Assist on Soil Survey Enhancement and ESI Correlation Project (Rock Springs)	WY-048
NS	WY-006	Assist on Green River/Trona Visibility Study	WY-048

<b>NARSC</b>	<b>#</b>	<b>PROJECT</b>	<b>OFFICE</b>
NS	WY-019	Technical Air Quality Support on Cave Gulch EIS	WY-060
NS	WY-005	Conduct Climate Analysis Project	WY-930
NS	WY-016	CASHE Assessment - Casper District	WY-932
GS	WY-011	100K Map Revision/Reprint	WY-941
AE	WY-006	National Historic Trails Center - Design/Review	WY-950
GS	WY-003	Engineering Site Mapping; Pathfinder Reservoir Phase 2	WY-950
AE	WY-018	Inspection of HVAC System of Kemmerer WY	WY-951
AE	WY-021	Site Selection for French Creek Bridge	WY-951
AE	WY-015	Newcastle RA Office Modernization Electrical Upgrade	WY-954
AE	WY-014	Cody RA Office Modernization Electrical Upgrade	WY-954
AE	WY-013	Casper District Office/Platte River RA Modernization Electrical Upgrade	WY-954

