

National Weekly Cattle And Beef Summary

Des Moines, Iowa

Mon Mar 02, 2009

USDA Livestock & Grain Market News

For Week Ending:

2/28/2009

	<u>This Week</u>	<u>Prior Week</u>	<u>Last Year</u>
<a href="#">LM_XB463</a>			
<b>CUTOUT VALUES</b>	<b>134.46</b>	<b>135.95</b>	<b>151.08</b>
Primal Rib	192.76	187.43	225.53
Primal Chuck	109.09	113.69	117.44
Primal Round	124.85	129.53	136.93
Primal Loin	179.87	178.07	214.98
Primal Brisket	94.79	98.27	88.88
Primal Short Plate	96.15	94.18	97.71
Primal Flank	80.16	81.09	94.25

<b>WEEKLY VOLUME BREAKDOWN</b>			
<b>Total Loads</b>	<b>7862</b>	<b>7046</b>	<b>7261</b>
Prime Loads	49	42	44
Branded Loads	745	698	564
Choice Loads	2410	2026	2168
Select Loads	1574	1298	1404
Ungraded Loads (cuts, trims, grinds)	3084	2982	3081

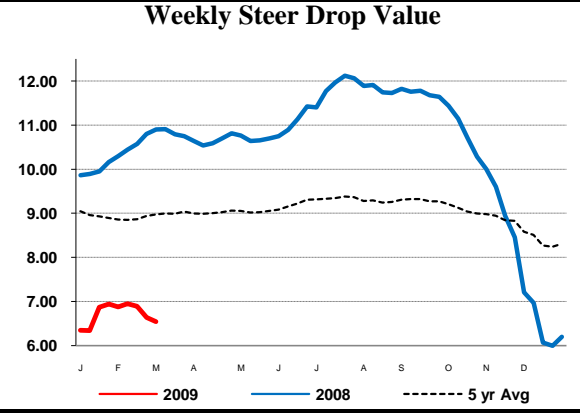
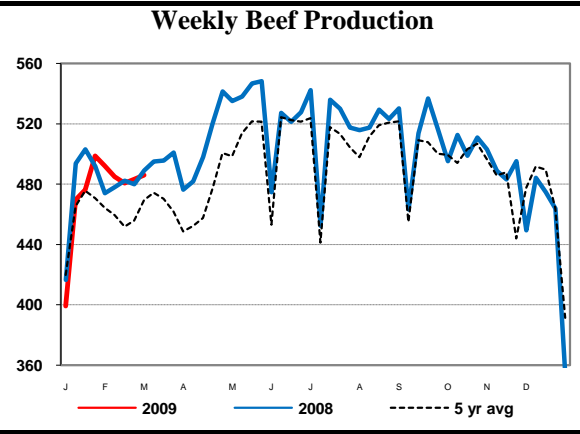
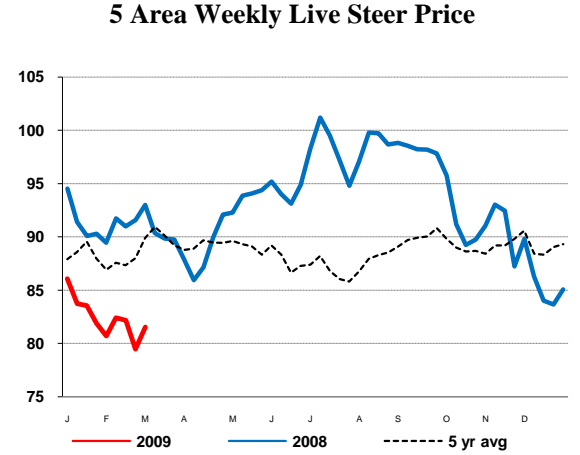
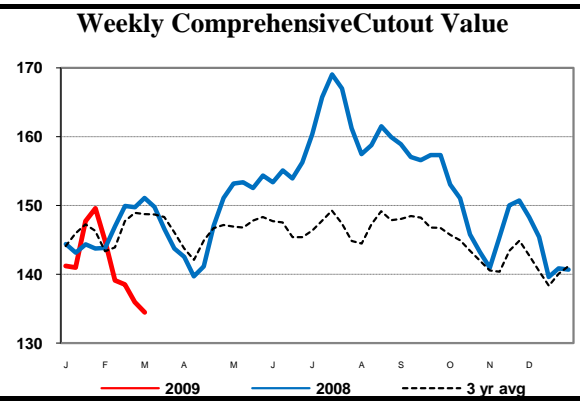
<b>TYPE OF SALES</b>			
Negotiated Sales 0-21 Day	3576	3089	3217
Negotiated Sales 21+ Day	914	667	617
Formula Sales	3035	3061	2870
Forward Contract Sales	337	230	557
Domestic Sales	7503	6584	6795
NAFTA Exports	173	291	No Comp
Overseas Exports	186	171	No Comp

<a href="#">LM_CT150</a> <b>5 AREA WEEKLY WEIGHTED CATTLE PRICE</b>			
Live Steer	81.56	79.48	93.00
Live Heifer	81.39	79.55	93.02
Dressed Steer	129.47	128.27	148.11
Dressed Heifer	129.47	127.69	148.18

<a href="#">NW_LS441</a> <b>WEEKLY USDA BY-PRODUCT DROP VALUE (STEER)</b>			
	6.54	6.64	10.90

<a href="#">SJ_LS712</a> <b>BEEF PRODUCTION</b>			
	(Estimate)	(Estimate)	(Actual)
Slaughter	618,000	615,000	632,000
Live Weights	1313	1312	1286
Dressed Weights	790	789	777
Beef Production (mil lbs)	486.1	483.2	489.2

<a href="#">NW_LS196</a> <b>NATIONAL STEER &amp; HEIFER ESTIMATED GRADING PERCENT</b>			
For Week Ending: Feb 14, 2009			
<b>Total Quality and Yield Grades for All Regions</b>			
Prime	2.25%	2.58%	2.43%
Choice	56.16%	60.38%	57.73%
Select	26.72%	29.40%	31.76%
<b>Percentage by Class</b>			
Steer	47.63%	46.84%	49.32%
Heifer	30.00%	31.98%	31.08%
Dairy Cow	10.45%	9.84%	8.25%
Other Cow	10.30%	9.84%	9.81%
Bulls	1.62%	1.50%	1.54%



USDA Livestock & Grain Market News  
 Des Moines, Iowa  
 Phone: 515-284-4460  
 Email: [desm.lgmn@usda.gov](mailto:desm.lgmn@usda.gov)  
[www.ams.usda.gov/LSMarketNews](http://www.ams.usda.gov/LSMarketNews)