

National Weekly Cow and Boneless Beef Summary

Des Moines, Iowa

Friday, February 27, 2009

USDA Livestock & Grain Market News

BONELESS PROCESSING BEEF & BEEF TRIMMINGS - LM_XB460

	National		Central US	
	Loads	Wt Avg \$	Loads	Wt Avg \$
Fresh 92-94%	15.5	146.14	6.6	143.87
Fresh 90%	61.8	135.57	52.6	135.07
Fresh 85%	29.0	124.46	23.7	124.11
Fresh 81%				
Fresh 75%	5.5	105.88	5.1	105.99
Fresh 73%	2.0	104.20	2.0	104.20
Fresh 65%	17.1	90.54	8.9	90.94
Fresh 50%	102.9	82.06		

	Loads	Wt Avg \$	Change
<u>100% LEAN - LM_XB461</u>			
Cutter Cow Carcass Cutout Value		106.65	(1.21)
Inside Rounds - Combo	6.5	174.97	0.07
Inside Rounds - Boxed	4.6	180.35	0.06
Outside Rounds	1.6	159.90	(3.39)
Eye of Rounds	1.0	181.53	1.08
Flats and Eyes - Combo	6.2	158.92	0.33
Striploins	6.0	189.43	4.43
S.P.B. - Combo	9.4	159.23	0.73

	Str/Hfr		Str/Hfr/Cow	
	Loads	Wt Avg \$	Loads	Wt Avg \$
Fresh 73%	58.3	107.71	9.6	119.03
Fresh 75%	4.7	117.66		
Fresh 81%	77.0	115.61	40.5	132.89
Fresh 85%	1.8	155.07	5.9	155.97
Fresh 90%	0.2	180.56	4.7	182.59
Fresh 93%	13.4	184.75		
Ground Chuck	52.4	124.18	4.9	138.74
Ground Round	12.1	146.89	4.8	167.78
Ground Sirloin	3.7	216.93	9.4	212.68

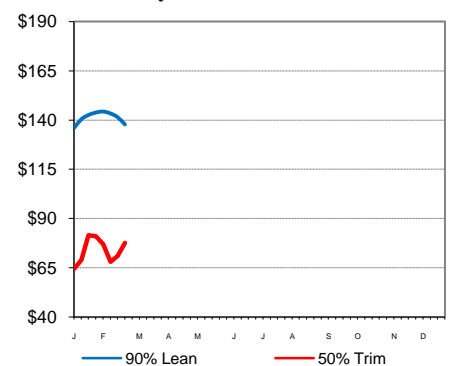
		<u>Weekly Canadian Imports</u>	
		Week ending	2/21/09
Week to Date (est)	618,000	Sltr Cows	3,845
Same Period Last Week (est)	615,000	Sltr Bulls	568
Same Period Last Year (act)	632,000	YTD Cows	27,476
		YTD Bulls	3,682
Cow/Bull Total through Thursday	98,000	<u>Canada Live Cow Prices - \$US</u>	
Previous Wk Total Cow & Bull Est	129,000	Ontario	40.66
		Alberta	35.79

<u>BEEF PRODUCTION - SJ_LS711</u>	2/14/2009	2/7/2009	2/16/2008
Cow & Bull Slaughter	138,162	132,310	122,315
Year to Date Totals	949,927	811,765	874,554

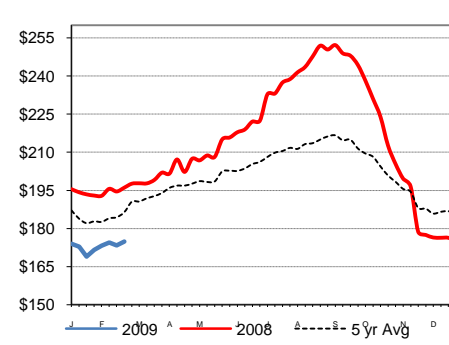
<u>COW BY-PRODUCT DROP - NW_LS444</u>	cwt live	5.94
	cwt dressed	12.64

Live Auction Prices	Lean 85-90%	Bng. 80-85%	Brk. 75-80%	Bull 92%
<u>Washington - ML_LS795</u>	35.50	38.50	39.50	50.00
<u>Montana - BL_LS754</u>	36.38	42.00	43.50	51.25
<u>Colorado-Ft.Collins, CO</u>	41.50	44.00	46.62	58.38
<u>South Dakota - SF_LS115</u>	39.38	44.25	45.75	56.25
<u>Iowa - NW_LS785</u>	33.75	41.25	45.50	51.50
<u>Missouri -Joplin- JC_LS174</u>	34.25	43.00	43.00	56.50
<u>OK - Ok City- KO_LS155</u>	43.38	46.25	44.00	56.50
<u>TX -San Angelo-SA_LS150</u>	39.25	43.00	41.75	54.25
<u>New Mexico-CV_LS150</u>	40.46	43.04	42.00	59.50
<u>Alabama - MG_LS145</u>	39.50	43.00	42.50	53.25
<u>Georgia - TV_LS145</u>	42.96	45.50	43.75	58.00
<u>Louisiana - BG_LS145</u>	39.00	43.00	-	53.88
<u>Kentucky - SV_LS145</u>	37.88	41.38	43.42	52.13
<u>PA-New Holland-LN_LS145</u>	42.00	46.00	48.50	59.50

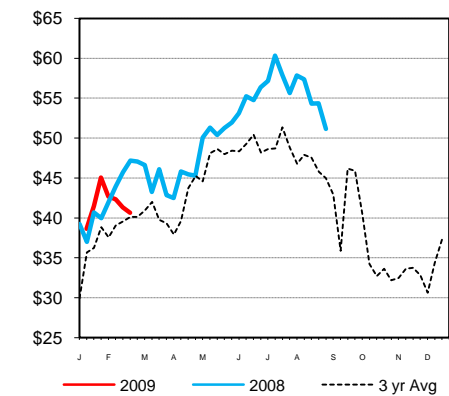
2009 Weekly - 90% Lean vs 50% Lean



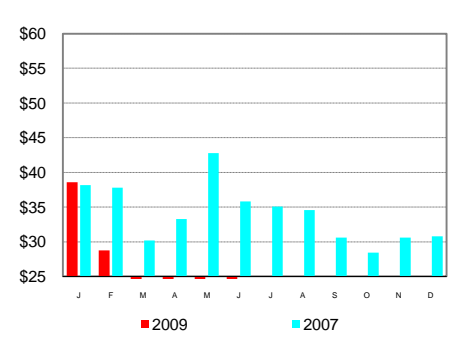
100% Lean - Inside Rounds



Ontario Live Cow Prices



Monthly Spread Between 90% Bnls and Lean 90% Live Price



USDA Livestock & Grain Market News

Des Moines, Iowa
 Phone: 515-284-4460
 Email: desm.lgmn@usda.gov
www.ams.usda.gov/LSMarketNews