

AUCTION SUMMARY

GL LS752				2,894 hd	Tuesday
WINTER LIVESTOCK INC.				La Junta, CO	
Feeder Steers	400-500 lbs	pkg 106.00	Feeder Heifers	400-500 lbs	92.00-98.00
Medium &	500-600 lbs	102.00-111.00	Medium &	500-600 lbs	88.00-95.00
Large #1	600-700 lbs	100.00-105.00	Large #1	600-700 lbs	84.00-91.50
	700-800 lbs	91.00-95.00		700-800 lbs	82.25-85.75
	800-900 lbs	pkg 87.25		800-900 lbs	78.50-80.75

AM LS750				1,972 hd	Tuesday
AMARILLO LIVESTOCK AUCTION				Amarillo, TX	
Feeder Steers	400-500 lbs	106.00-108.00	Feeder Heifers	400-500 lbs	92.00-95.00
Medium &	500-600 lbs	91.00-99.00	Medium &	500-600 lbs	87.00-93.00
Large #1	600-700 lbs	90.50-96.50	Large #1	600-700 lbs	85.50-89.00
	700-800 lbs	86.75-92.50		700-800 lbs	81.50-84.50
	800-900 lbs	82.50-87.75		800-900 lbs	77.50-79.50

NW LS754				1,735 hd	Tuesday
HUMESTON LIVESTOCK AUCTION				Humeston, IA	
Feeder Steers	400-500 lbs	111.50-116.75	Feeder Heifers	400-500 lbs	97.00-108.50
Medium &	500-600 lbs	103.75-111.50	Medium &	500-600 lbs	87.00-100.25
Large #1	600-700 lbs	95.00-102.25	Large #1	600-700 lbs	83.00-91.50
	700-800 lbs	88.00-99.75		700-800 lbs	81.75-84.50
	800-900 lbs	86.25-89.10		800-900 lbs	pkg 80.00

[Live Cattle Settlements](#) [Feeder Cattle Settlements](#) Tuesday

CHICAGO MERCANTILE EXCHANGE LIVESTOCK FUTURES SETTLEMENT

Live Cattle			Feeder Cattle		
		Change			Change
Apr	84.22	0.27	Mar	91.97	0.52
Jun	82.45	0.25	Apr	92.80	0.45
Aug	83.35	0.40	May	94.32	0.27

[Corn Settlements](#) [Soybean Settlements](#) Tuesday

CHICAGO BOARD OF TRADE GRAIN FUTURES SETTLEMENT

Corn			Soybeans		
		Change			Change
Mar	3.43 1/2	unch	Mar	8.63	14 1/2
May	3.50 1/2	1/4	May	8.53 1/2	9 1/2
Jul	3.59 3/4	1/4	Jul	8.51 1/4	4 3/4

[SJ GR710](#) [Wheat](#) [Change](#)

KANSAS CITY BOARD OF TRADE		Mar	5.38 3/4	(2)
WHEAT FUTURES SETTLEMENT		May	5.45 1/4	(1 3/4)
		Jul	5.52 1/4	(2 1/2)

[LM CT100](#) Tuesday

5 AREA WKLY ACCUMULATED WTD AVG SLAUGHTER CATTLE PRICE

	Head Count	Avg Weight	Avg Price
Live Steer			
Live Heifer			
Dressed Steer			
Dressed Heifer			

[LM XB403](#) Tuesday

DAILY ESTIMATED BOXED BEEF CUTOUT VALUES

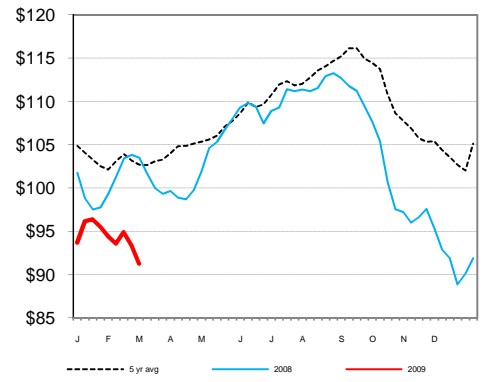
Choice	Select	Choice Cuts	98	Loads
600-900#	600-900#	Select Cuts	78	Loads
134.82	132.92	Trimming	31	Loads
1.31	1.51	Grinds	37	Loads

[SJ LS710](#) [KO LS151](#)

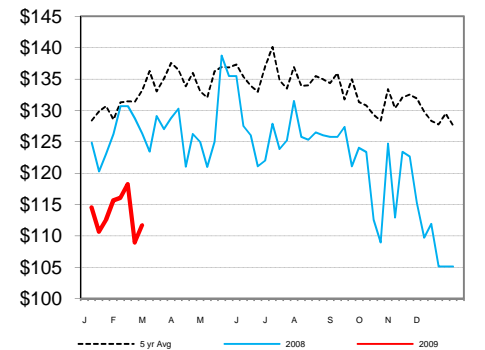
ESTD DAILY CATTLE SLAUGHTER **SLAUGHTER COW MARKET**

Tue (est)	124,000	Oklahoma National Stockyards		
Week Ago (est)	124,000	Tuesday	<u>Pct Lean</u>	<u>Price</u>
Year Ago (act)	128,000	Breaking	70-80	42.00-46.00
Wk to date (est)	241,000	Boning	80-85	44.50-48.00
Last Week (est)	242,000	Lean	85-90	42.25-44.50
Last Year (act)	254,000	Monday		
Previous Day Estimated:	Steer and Heifer		94,000	
	Cow and Bull		23,000	

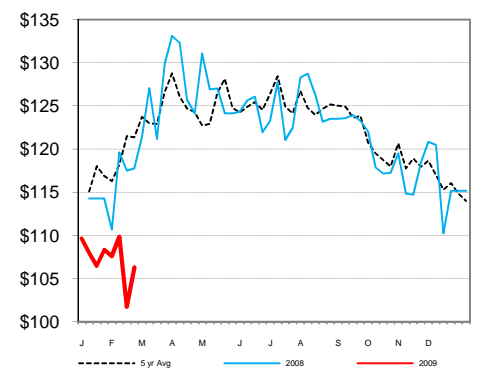
CME Feeder Cattle Index



Oklahoma City 400-500 lb Steer Price



Oklahoma City 500-600 lb Steer Price



Oklahoma City 700-800 lb Steer Price

