

[LM\\_XB403](#)

**DAILY ESTIMATED CUTOUT VALUES**

	Choice <u>600-900#</u>	Select <u>600-900#</u>	Choice/Select Spread
Cutout Values	135.48	133.48	2.00
Change from Prior Day	0.66	0.56	
Primal Rib	195.57	189.35	
Primal Chuck	108.73	108.24	
Primal Round	123.52	120.60	
Primal Loin	184.13	181.47	
Primal Brisket	98.79	100.20	
Primal Short Plate	96.43	97.13	
Primal Flank	79.35	78.04	
			<b>Load Count:</b>
			Total 348
			Choice 147
			Select 75
			Trimmings 35
			Grinds 91

Fresh 50% Trimmings: 33 Loads @ 83.63

[NW\\_LS441](#)

**USDA BY-PRODUCT DROP VALUE (STEER)**

Value: 6.31 Change: (0.01)

[LM\\_CT100](#)

**5 AREA WEEKLY ACCUMULATED WEIGHTED AVG CATTLE PRICE**

	Head Count	Avg Weight	Avg Price
Live Steer	0		
Live Heifer	0		
Dressed Steer	110	830	129.38
Dressed Heifer	0		

[SJ\\_LS710](#)

**ESTIMATED DAILY CATTLE SLAUGHTER**

Today (est)	118,000
Week Ago (est)	125,000
Year Ago (act)	125,000
Week to Date (est)	359,000
Same Period Last Week (est)	367,000
Same Period Last Year (act)	379,000
Previous Day Estimated	Steer and Heifer 100,000 Cow and Bull 24,000

[SJ\\_LS712](#)

	W/E 02/28/2009 (Estimate)	Previous week (Estimate)	Last Year (Actual)
<b>BEEF PRODUCTION</b>			
Slaughter	618,000	615,000	632,000
Live Weights	1313	1312	1286
Dressed Weights	790	789	777
Beef Production (millions of pounds)	486.1	483.2	489.2

**USDA BEEF CARCASS PRICE EQUIVALENT INDEX VALUE**

	Choice <u>600-900#</u>	Select <u>600-900#</u>	Dressing percent:	
			Steer	Heifer
Values	125.59	123.27	63.59	63.58
Change	0.33	0.29		

[LM\\_XB405](#)

**USDA NATIONAL CUTTER COW CARCASS CUTOUT**

105.82 Change 0.15 90% lean: 134.25

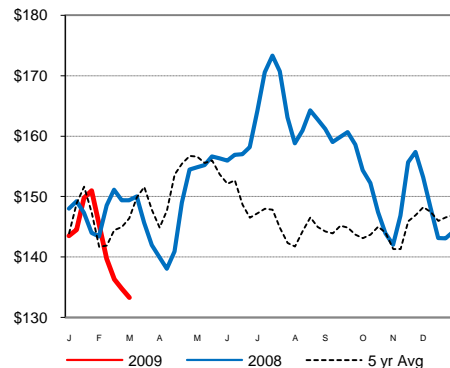
**CME LIVE CATTLE**

CME LIVE CATTLE	High	Low	Close	Change
April	85.50	84.55	84.65	0.43
June	83.70	82.90	83.05	0.60
August	84.40	83.70	83.98	0.63

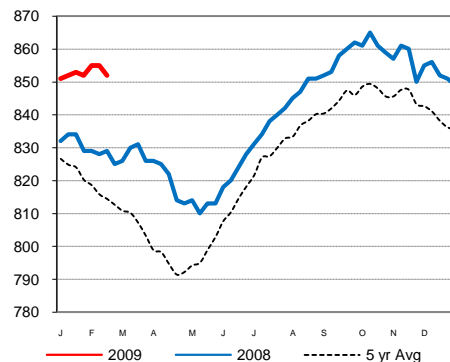
**CME FEEDER CATTLE**

CME FEEDER CATTLE	High	Low	Close	Change
March	93.55	92.70	93.03	1.05
April	94.45	93.65	93.85	1.05
May	96.00	94.70	94.90	0.58

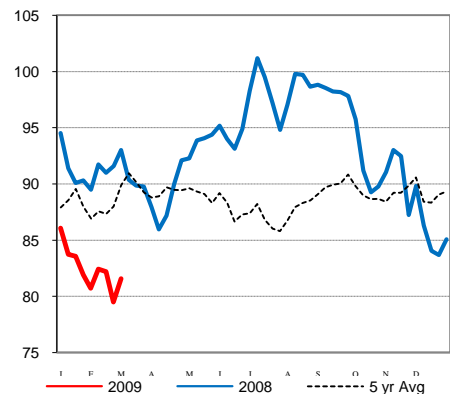
**Weekly Choice Cutout**



**Weekly Steer Dressed Weights**



**5 Area Weekly Wtd Avg Steer Price**



**Weekly Ch/Se Spread**

