

## CHAPTER III

### STATISTICS OF OILSEEDS, FATS, AND OILS

This chapter includes information on cottonseed, flaxseed, olive oil, peanuts, soybeans, margarine, and fats and oils. Most butter statistics are included in the chapter on dairy and poultry statistics. Lard data are mostly in the chapter on livestock.

**Table 3-1.—Cottonseed: All cotton harvested area and cottonseed production, farm disposition, marketing year average price per ton received by farmers, and value, United States, 1990–99**

Year	Harvested area of all cotton	Cottonseed				
		Production	Total sales to oil mills	Other <sup>1</sup>	Marketing year average price	Value of production
	<i>1,000 acres</i>	<i>1,000 tons</i>	<i>1,000 tons</i>	<i>1,000 tons</i>	<i>Dollars/ton</i>	<i>1,000 dollars</i>
1990 .....	11,731.6	5,968.5	4,311.2	1,657.3	121.00	722,313
1991 .....	12,959.5	6,925.5	4,667.2	2,258.3	71.00	492,261
1992 .....	11,123.3	6,230.1	3,920.2	2,309.9	97.50	608,438
1993 .....	12,783.3	6,343.2	3,927.4	2,415.8	113.00	714,389
1994 .....	13,322.3	7,603.9	5,012.2	2,591.7	101.00	771,315
1995 .....	16,006.7	6,848.7	4,439.1	2,409.6	106.00	731,005
1996 .....	12,888.1	7,143.5	4,363.2	2,780.3	126.00	914,564
1997 .....	13,406.0	6,934.6	4,182.4	2,752.2	121.00	835,371
1998 .....	10,683.6	5,365.4	3,261.1	2,104.3	129.00	687,179
1999 <sup>2</sup> .....	13,381.0	6,422.4	NA	NA	88.50	562,468

<sup>1</sup> Includes planting seed, feed, exports, inter-farm sales, shrinkage, losses, and other uses. <sup>2</sup> Preliminary. NA—not available.

NASS, Crops Branch, (202) 720–2127.

**Table 3-2.—Cottonseed: Production and farm disposition, by State and United States, 1997–99**

State	Production			Farm disposition						Used for planting <sup>2</sup>		
	1997	1998	1999 <sup>1</sup>	Sales to oil mills			Other <sup>3</sup>			1997	1998	1999 <sup>4</sup>
				1997	1998	1999 <sup>4</sup>	1997	1998	1999 <sup>4</sup>			
	<i>1,000 tons</i>	<i>1,000 tons</i>	<i>1,000 tons</i>	<i>1,000 tons</i>	<i>1,000 tons</i>	<i>1,000 tons</i>	<i>1,000 tons</i>	<i>1,000 tons</i>	<i>1,000 tons</i>	<i>1,000 tons</i>	<i>1,000 tons</i>	<i>1,000 tons</i>
AL .....	196.0	192.0	224.0	87.0	67.0	.....	109.0	125.0	.....	5.7	6.4	.....
AZ .....	312.0	288.0	273.0	73.0	52.0	.....	239.0	236.0	.....	2.4	2.4	.....
AR .....	632.0	478.0	553.0	528.0	422.0	.....	104.0	56.0	.....	8.7	9.1	.....
CA .....	942.0	544.0	797.0	153.0	84.0	.....	789.0	460.0	.....	7.2	7.1	.....
FL .....	45.0	26.0	45.0	31.0	14.0	.....	14.0	12.0	.....	1.0	1.1	.....
GA .....	660.0	526.0	529.0	332.0	229.0	.....	328.0	297.0	.....	16.4	18.0	.....
KS .....	3.1	5.8	8.4	3.1	5.6	.....	0.0	0.2	.....	0.2	0.3	.....
LA .....	359.0	236.0	336.0	206.0	134.0	.....	153.0	102.0	.....	4.8	5.1	.....
MS .....	704.0	561.0	676.0	660.0	543.0	.....	44.0	18.0	.....	9.5	11.0	.....
MO .....	223.0	135.0	182.0	148.0	121.0	.....	75.0	14.0	.....	3.9	3.9	.....
NM .....	40.5	32.6	34.0	2.3	4.5	.....	38.2	28.1	.....	0.8	0.7	.....
NC .....	321.0	351.0	279.0	63.0	88.0	.....	258.0	263.0	.....	6.4	6.9	.....
OK .....	72.0	54.0	58.0	56.0	47.0	.....	16.0	7.0	.....	1.8	2.5	.....
SC .....	142.0	122.0	95.0	89.0	69.0	.....	53.0	53.0	.....	2.0	2.0	.....
TN .....	260.0	205.0	227.0	208.0	154.0	.....	52.0	51.0	.....	4.7	5.3	.....
TX .....	1,983.0	1,558.0	2,056.0	1,543.0	1,227.0	.....	440.0	331.0	.....	57.6	57.4	.....
VA .....	40.0	51.0	50.0	0.0	0.0	.....	40.0	51.0	.....	0.8	0.9	.....
US .....	6,934.6	5,365.4	6,422.4	4,182.4	3,261.1	.....	2,752.2	2,104.3	.....	133.9	140.1	.....

<sup>1</sup> Preliminary. <sup>2</sup> Included in 'other' farm disposition. Planting seed from previous years' crop. <sup>3</sup> Includes planting seed, feed, exports, inter-farm sales, shrinkage, losses, and other uses. <sup>4</sup> Not available.

NASS, Crops Branch, (202) 720–2127.

**Table 3-3.—Cottonseed: Price per ton and value of production, by State and United States, crop of 1997–99**

State	Marketing year average price per ton			Value of production		
	1997	1998	1999 <sup>1</sup>	1997	1998	1999 <sup>1</sup>
	<i>Dollars</i>	<i>Dollars</i>	<i>Dollars</i>	<i>1,000 dollars</i>	<i>1,000 dollars</i>	<i>1,000 dollars</i>
AL .....	111.00	111.00	79.00	21,756	21,312	17,696
AZ .....	134.00	148.00	130.00	41,808	42,624	35,490
AR .....	106.00	121.00	72.50	66,992	57,838	40,093
CA .....	174.00	177.00	137.00	163,908	96,288	109,189
FL .....	120.00	110.00	85.50	5,400	2,860	3,848
GA .....	108.00	105.00	73.00	71,280	55,230	38,617
KS .....	106.00	116.00	60.00	329	673	504
LA .....	110.00	113.00	71.00	39,490	26,668	23,856
MS .....	106.00	116.00	72.50	74,624	65,076	49,010
MO .....	111.00	131.00	91.00	24,753	17,685	16,562
NM .....	134.00	149.00	97.50	5,427	4,857	3,315
NC .....	114.00	114.00	96.00	36,594	40,014	26,784
OK .....	106.00	116.00	60.00	7,632	6,264	3,480
SC .....	108.00	108.00	72.50	15,336	13,176	6,888
TN .....	115.00	131.00	78.00	29,900	26,855	17,706
TX .....	114.00	131.00	80.00	226,062	204,098	164,480
VA .....	102.00	111.00	99.00	4,080	5,661	4,950
US .....	121.00	129.00	88.50	835,371	687,179	562,468

<sup>1</sup> Preliminary.

NASS, Crops Branch, (202) 720-2127.

**Table 3-4.—Cottonseed: Crushings, output of products and product prices, United States, 1989–98**

Year beginning August	Quantity crushed	Cottonseed products and prices				Year beginning August	Quantity crushed	Cottonseed products and prices			
		Oil		Cake and meal				Oil		Cake and meal	
		Quantity	Price <sup>1</sup>	Quantity	Price <sup>2</sup>			Quantity	Price <sup>1</sup>	Quantity	Price <sup>2</sup>
	<i>1,000 tons</i>	<i>Mil-lion pounds</i>	<i>Cents per pound</i>	<i>1,000 tons</i>	<i>Dollars per ton</i>		<i>1,000 tons</i>	<i>Mil-lion pounds</i>	<i>Cents per pound</i>	<i>1,000 tons</i>	<i>Dollars per ton</i>
1989 ..	2,974	1,039	23.3	1,327	163.30	1994 ..	3,947	1,312	29.23	1,830	112.02
1990 ..	3,369	1,154	22.3	1,691	130.75	1995 ..	3,882	1,229	26.53	1,748	190.74
1991 ..	3,981	1,279	20.1	1,764	140.50	1996 ..	3,860	1,216	25.58	1,752	192.00
1992 ..	3,629	1,137	30.07	1,533	161.78	1997 ..	3,885	1,223	28.84	1,767	145.00
1993 ..	3,470	1,119	30.30	1,563	164.30	1998 ..	2,719	820	28.00	1,205	110.00

<sup>1</sup> Tanks, f.o.b. Valley Points. <sup>2</sup> 41 percent protein, solvent, Memphis.

ERS, Field Crops Branch, (202) 694-5300. Compiled from annual reports of the U.S. Department of Commerce.

**Table 3-5.—Cottonseed: Quality of cottonseed and number of samples graded, United States, 1989–98<sup>1</sup>**

Year beginning August <sup>1</sup>	Cottonseed quality analysis <sup>2</sup>					Quantity <sup>3</sup>	Quality <sup>4</sup>	Average grade <sup>5</sup>	Samples graded <sup>6</sup>
	Oil	Ammonia	Moisture	Free fatty acids	Foreign matter				
	Percent	Percent	Percent	Percent	Percent	Index	Index		Number
1989 .....	18.0	3.96	9.9	0.7	1.5	100.51	98.9	99.6	24,301
1990 .....	17.4	4.09	10.1	0.8	1.3	99.00	98.9	97.9	30,350
1991 .....	18.0	3.92	10.2	0.8	1.6	100.45	98.6	99.1	32,978
1992 .....	17.5	3.68	10.5	0.8	1.3	97.28	99.3	96.3	27,292
1993 .....	17.7	3.85	9.7	0.6	1.5	98.53	98.3	97.4	21,867
1994 .....	17.8	3.80	10.5	1.0	1.1	98.81	98.3	97.1	21,877
1995 .....	17.8	3.98	9.8	0.6	1.1	99.80	99.4	99.1	14,169
1996 .....	18.1	3.92	10.2	0.9	1.1	100.78	99.1	100.7	14,444
1997 .....	17.7	3.93	10.7	0.7	0.9	99.39	99.3	98.7	9,711
1998 .....	17.6	3.93	9.9	0.8	0.7	99.05	99.6	98.6	4,996

<sup>1</sup>U.S. averages not fully representative of entire crop because of relatively small volume of seed graded in some areas. <sup>2</sup>These basic factors are combined to form indexes of quantity and quality which in turn are used to determine the official grade of cottonseed in accordance with the United States Official Standards for Grades. <sup>3</sup>The quantity index measures the oil and cake or meal in the cottonseed, taking into account variations in the quantity of oil and ammonia. <sup>4</sup>The quality index measures the deterioration in oil and meal and takes into account the excesses of moisture and foreign matter and free fatty acids. <sup>5</sup>The average grade is the product of the quantity index times the quality index. The base grade is 100.0. <sup>6</sup>Samples graded by licensed chemists under the supervision of the U.S. Department of Agriculture. AMS, Cotton Program, (901) 384-3016.

**Table 3-6.—Cottonseed oil and cottonseed cake and meal: United States exports by country of destination 1995/96–1997/98 (Marketing year October–September)**

Continent and country of destination	Cottonseed oil <sup>1</sup>			Cottonseed cake and meal		
	1995/96	1996/97	1997/98 <sup>2</sup>	1995/96	1996/97	1997/98 <sup>2</sup>
	Metric tons	Metric tons	Metric tons	Metric tons	Metric tons	Metric tons
North and Central America; incl. Caribbean:						
Canada .....	26,790	34,991	35,466	1,465	1,140	1,459
Dominican Republic .....	27	66	0	454	0	0
El Salvador .....	21,412	21,461	1,798	0	0	0
Guatemala .....	900	0	0	1,437	3,461	119
Mexico .....	1,495	7,206	3,703	53,061	57,677	84,530
Total <sup>3</sup> .....	56,720	65,557	42,408	56,418	62,278	86,132
South America:						
Venezuela .....	0	4	0	0	200	2
Total <sup>3</sup> .....	13,146	10,813	32	217	479	211
Europe:						
Austria .....	0	0	0	4,248	3,111	13,991
Belgium and Luxembourg .....	0	0	0	10,170	2,451	774
Denmark .....	5	0	0	0	0	0
France .....	0	0	0	40	131	10
Germany .....	108	226	0	9,004	4,574	1,244
Netherlands .....	1,998	2,199	510	1,365	0	0
United Kingdom .....	9,562	40	7	20	159	80
Total <sup>3</sup> .....	14,868	2,641	1,076	30,804	17,832	20,058
Africa:						
Egypt .....	0	0	0	0	0	0
Total <sup>3</sup> .....	4,336	0	0	1,000	40	0
Asia:						
Hong Kong .....	0	1,666	0	0	40	0
Israel .....	1,090	1,413	936	0	0	0
Japan .....	12,467	6,969	4,821	3,173	738	754
Korea, Rep. of .....	2,984	1,556	652	27,559	17,067	2,175
Total <sup>3</sup> .....	19,443	15,209	6,681	31,033	18,397	3,256
Oceania .....	296	36	0	223	0	0
Grand total <sup>4</sup> .....	108,808	94,256	50,196	119,695	99,026	109,656

<sup>1</sup>Crude and refined (includes shipments under P.L. 480). <sup>2</sup>Preliminary. <sup>3</sup>Includes quantities exported to countries not shown. <sup>4</sup>May not add due to rounding.

FAS, Cotton, Oilseeds, Tobacco and Seeds Division, (202) 720-5710. (Compiled from reports of the U.S. Department of Commerce.)

**Table 3-7.—Cottonseed: Area, yield, and production in specified countries, 1996/97–1998/99<sup>1</sup>**

Continent and country	Area <sup>2</sup>			Yield per hectare			Production		
	1996/97	1997/98	1998/99 <sup>3</sup>	1996/97	1997/98	1998/99 <sup>3</sup>	1996/97	1997/98	1998/99 <sup>3</sup>
	1,000 hectares	1,000 hectares	1,000 hectares	Metric tons	Metric tons	Metric tons	1,000 metric tons	1,000 metric tons	1,000 metric tons
<b>North and Central America, and the Caribbean:</b>									
Mexico .....	246	200	229	1.50	1.67	1.48	368	334	339
United States .....	5,216	5,425	4,324	1.24	1.16	1.13	6,481	6,291	4,867
Total <sup>4</sup> .....	5,462	5,625	4,553	1.25	1.18	1.14	6,849	6,625	5,206
<b>South America:</b>									
Argentina .....	880	850	650	0.64	0.64	0.54	560	548	350
Brazil .....	695	850	800	0.71	0.76	0.98	490	650	782
Colombia .....	86	54	55	1.21	1.31	1.35	104	71	74
Paraguay .....	105	200	140	0.64	0.60	0.71	67	120	100
Peru .....	109	85	60	0.91	0.54	0.88	99	46	53
Total <sup>4</sup> .....	1,969	2,141	1,785	0.71	0.70	0.79	1,390	1,504	1,411
<b>European Union:</b>									
Greece .....	420	388	412	1.13	1.44	1.39	475	560	573
Spain .....	76	108	97	1.51	1.52	1.49	115	164	145
Total <sup>4</sup> .....	497	497	510	1.19	1.46	1.41	591	725	719
<b>Former Soviet Union:<sup>5</sup></b>									
Azerbaijan .....	213	210	152	0.68	0.36	0.46	145	75	70
Kazakhstan .....	110	90	115	0.94	1.22	0.78	103	110	90
Kyrgyzstan .....	40	25	33	1.00	1.40	1.36	40	35	45
Tajikistan .....	235	214	240	0.68	0.86	0.86	160	184	207
Turkmenistan .....	450	450	475	0.58	0.82	0.87	260	370	415
Uzbekistan .....	1487	1483	1485	1.35	1.55	1.35	2014	2300	2000
Total .....	2,535	2,472	2,500	1.07	1.24	1.13	2,722	3,074	2,827
<b>Africa:</b>									
Cameroon .....	191	170	180	1.08	1.03	1.00	206	175	180
Egypt .....	387	374	280	1.52	1.28	1.36	590	480	380
Mali .....	420	500	500	0.82	0.80	0.81	346	399	403
<b>South Africa:</b>									
Republic of .....	116	111	137	0.53	0.77	0.77	62	85	105
Sudan .....	280	265	150	0.82	0.79	0.85	230	210	128
Tanzania .....									
United Republic of .....	280	280	250	0.43	0.41	0.24	121	114	60
Zimbabwe .....	313	315	320	0.56	0.58	0.63	176	183	200
Total <sup>4</sup> .....	1,987	2,015	1,817	0.87	0.82	0.80	1,731	1,646	1,456
<b>Asia and the Middle East:</b>									
China, Peoples Republic of .....	4,722	4,491	4,459	1.60	1.84	1.82	7,560	8,280	8,100
India .....	9,122	8,904	9,300	0.65	0.59	0.58	5,897	5,238	5,437
Iran .....	300	240	230	0.81	0.73	0.81	242	175	187
Israel .....	30	30	30	3.07	2.93	3.00	92	88	90
Pakistan .....	3,148	2,960	2,900	1.01	1.06	0.95	3,188	3,124	2,750
Syria .....	220	251	272	2.39	2.78	2.50	525	699	679
Turkey .....	743	722	757	1.58	1.65	1.70	1,175	1,190	1,290
Total <sup>4</sup> .....	18,285	17,598	17,948	1.02	1.07	1.03	18,679	18,794	18,533
Australia .....	396	438	553	2.00	2.15	1.79	842	941	990
<b>World Total<sup>6</sup></b>	<b>33,770</b>	<b>33,766</b>	<b>32,913</b>	<b>1.02</b>	<b>1.04</b>	<b>1.00</b>	<b>34,386</b>	<b>35,061</b>	<b>32,797</b>

<sup>1</sup> Split year includes Northern Hemisphere crop harvested in the late months of the first year shown combined with Southern Hemisphere and certain Northern Hemisphere crops harvested in the early months of the following year. <sup>2</sup> Harvested area. <sup>3</sup> Preliminary. <sup>4</sup> Includes only countries shown. <sup>5</sup> Former Soviet Union; includes all 15 republics of the USSR. <sup>6</sup> Includes all countries in USDA data base.

FAS, Cotton, Oilseeds, Tobacco and Seeds Division, (202) 720-5710. (Compiled from reports of the U.S. Department of Commerce.)

**Table 3-8.—Flaxseed: Area, yield, production, disposition, and value, United States, 1990–99**

Year	Area planted	Area harvested	Yield per harvested acre	Production	Marketing year average price per bushel received by farmers	Value of production
	<i>1,000 acres</i>	<i>1,000 acres</i>	<i>Bushels</i>	<i>1,000 bushels</i>	<i>Dollars</i>	<i>1,000 dollars</i>
1990 .....	260	253	15.1	3,812	5.27	20,108
1991 .....	356	342	18.1	6,200	3.52	21,845
1992 .....	171	165	19.9	3,288	4.12	13,543
1993 .....	206	191	18.2	3,482	4.25	14,847
1994 .....	178	171	17.1	2,922	4.63	13,590
1995 .....	165	147	15.0	2,212	5.20	11,481
1996 .....	96	92	17.4	1,602	6.37	10,197
1997 .....	151	146	16.6	2,420	5.81	14,046
1998 .....	336	329	20.4	6,708	5.05	33,809
1999 <sup>1</sup> .....	387	382	20.6	7,880	3.90	31,000

<sup>1</sup> Preliminary.  
NASS, Crops Branch, (202) 720-2127.

**Table 3-9.—Flaxseed: Supply and disappearance, United States, 1989–98**

Year beginning June	Supply				Disappearance			
	Stocks June 1	Production	Imports	Total	Total used for seed	Exports	Crushings <sup>1</sup>	Total domestic disappearance <sup>2</sup>
	<i>1,000 bushels</i>	<i>1,000 bushels</i>	<i>1,000 bushels</i>	<i>1,000 bushels</i>	<i>1,000 bushels</i>	<i>1,000 bushels</i>	<i>1,000 bushels</i>	<i>1,000 bushels</i>
1989 .....	1,307	1,215	7,260	9,782	211	1,054	8,250	8,484
1990 .....	244	3,812	6,715	10,771	288	549	8,800	9,251
1991 .....	971	6,200	4,371	11,542	139	541	9,050	9,445
1992 .....	1,556	3,288	6,035	10,879	167	230	8,600	9,104
1993 .....	1,545	3,480	5,118	10,143	144	126	8,650	8,863
1994 .....	1,155	2,922	6,005	10,082	134	72	8,550	8,840
1995 .....	1,170	2,212	7,300	10,682	78	119	9,000	9,280
1996 .....	1,230	1,602	8,390	11,222	123	144	10,000	10,625
1997 .....	453	2,420	9,636	12,509	272	174	10,500	11,154
1998 .....	1,181	6,708	5,992	13,881	276	476	10,600	11,247

<sup>1</sup> From domestic and imported seed. <sup>2</sup> Total supply minus exports and stocks June 1 of following year.  
ERS, Field Crops Branch, (202) 694-5300.

**Table 3-10.—Flaxseed: Area, yield, and production, by States, 1997–99**

State	Area planted			Area harvested			Yield per harvested acre			Production		
	1997	1998	1999	1997	1998	1999	1997	1998	1999	1997	1998	1999
	<i>1,000 acres</i>	<i>1,000 acres</i>	<i>1,000 acres</i>	<i>1,000 acres</i>	<i>1,000 acres</i>	<i>1,000 acres</i>	<i>Bushels</i>	<i>Bushels</i>	<i>Bushels</i>	<i>1,000 bushels</i>	<i>1,000 bushels</i>	<i>1,000 bushels</i>
MN .....	6	30	13	6	27	12	16.0	16.0	25.0	96	432	300
ND .....	125	280	330	121	277	327	16.5	21.0	21.0	1,997	5,817	6,867
SD .....	15	15	22	14	14	21	18.0	21.0	17.0	252	294	357
Other States .....	5	11	22	5	11	22	15.0	15.0	16.2	75	165	356
US <sup>1</sup> .....	151	336	387	146	329	382	16.6	20.4	20.6	2,420	6,708	7,880

<sup>1</sup> Estimates include all States except AK and HI.  
NASS, Crops Branch, (202) 720-2127.

**Table 3-11.—Flaxseed: Marketing year average price and value of production, by States, crop of 1997, 1998, and 1999**

State	Marketing year average price per bushel			Value of production		
	1997	1998	1999 <sup>1</sup>	1997	1998	1999 <sup>1</sup>
	<i>Dollars</i>	<i>Dollars</i>	<i>Dollars</i>	<i>1,000 dollars</i>	<i>1,000 dollars</i>	<i>1,000 dollars</i>
MN .....	5.85	4.70	4.10	562	2,030	1,230
ND .....	5.81	5.05	3.90	11,603	29,376	26,781
SD .....	5.68	4.86	3.80	1,431	1,429	1,357
Other States .....	6.00	5.90	4.58	450	974	1,632
US <sup>2</sup> .....	5.81	5.05	3.90	14,046	33,809	31,000

<sup>1</sup> Preliminary. <sup>2</sup> Estimates include all States except AK and HI.  
NASS, Crops Branch, (202) 720-2127.

**Table 3-12.—Flaxseed: Support operations, United States, 1990-99**

Marketing year beginning June 1	Loan rate per bushel <sup>1</sup>	Put under loan <sup>2</sup>		Acquired by CCC under loan program <sup>3</sup>	Owned by CCC at end of marketing year
		Quantity	Percentage of production		
	<i>Dollars</i>	<i>1,000 bushels</i>	<i>Percent</i>	<i>1,000 bushels</i>	<i>1,000 bushels</i>
1990/91 .....	(4)	(4)	(4)	(4)	(4)
1991/92 .....	4.98	262.5	4.2	105.7	0
1992/93 .....	4.98	83.9	2.6	31.4	0
1993/94 .....	4.98	105.4	3.0	30.4	0
1994/95 .....	4.87	185.7	6.4	39.3	0
1995/96 .....	4.87	51.8	2.3	0.0	0
1996/97 .....	5.07	39.3	2.5	0.0	0
1997/98 .....	5.21	105.4	4.4	0.0	0
1998/99 .....	5.21	301.8	4.5	0.0	2
1999/2000 .....	5.21				

<sup>1</sup> The national average loan rate was also known as the price support rate prior to enactment of the Federal Agriculture Improvement and Reform Act of 1996. <sup>2</sup> Includes loans made. Does not include quantity on which loan deficiency payments were made. <sup>3</sup> Acquisition through loan forfeitures from the crop harvested in the year indicated and not acquisitions during that year. <sup>4</sup> Loan programs not authorized for 1988 through 1990.

FSA, Feed Grains & Oilseeds Analysis Group, (202) 720-8838.

**Table 3-13.—Flaxseed and linseed oil and meal: Average price Minneapolis, 1989-98**

Year <sup>1</sup>	Average price received by farmers per bushel	Minneapolis		Year <sup>1</sup>	Average price received by farmers per bushel	Minneapolis	
		Oil, per pound <sup>2</sup>	Meal, per ton <sup>3</sup>			Oil, per pound <sup>2</sup>	Meal, per ton <sup>3</sup>
	<i>Dollars</i>	<i>Cents</i>	<i>Dollars</i>		<i>Dollars</i>	<i>Cents</i>	<i>Dollars</i>
1989 .....	7.20	40.2	139.30	1994 .....	4.63	33.7	91.96
1990 .....	5.27	38.0	130.10	1995 .....	5.19	36.5	133.54
1991 .....	3.52	32.0	127.57	1996 .....	6.37	36.0	169.74
1992 .....	4.12	31.5	133.60	1997 .....	5.81	36.3	131.40
1993 .....	4.25	31.8	139.54	1998 .....	5.10	37.8	91.58

<sup>1</sup> Year beginning June 1. <sup>2</sup> Raw oil in tank cars. <sup>3</sup> Bulk carlots, 34 percent protein.  
ERS, Field Crops Branch, (202) 694-5300.

**Table 3-14.—Flaxseed and products: Flaxseed crushed; production, imports, and exports of linseed oil, cake, and meal; and June 1 stocks of oil, United States, 1989–98**

Year beginning June	Total flaxseed crushed	Linseed oil			Linseed cake and meal		
		Stocks June 1	Production	Exports	Production	Imports for consumption	Exports
	<i>1,000 bushels</i>	<i>Million pounds</i>	<i>Million pounds</i>	<i>Million pounds</i>	<i>1,000 tons</i>	<i>1,000 tons</i>	<i>1,000 tons</i>
1989 .....	8,250	48	165	12	153	9	23
1990 .....	8,800	37	176	6	162	3	41
1991 .....	9,050	40	182	12	167	0	40
1992 .....	8,600	40	172	8	159	2	55
1993 .....	8,650	54	174	3	160	2	49
1994 .....	8,550	63	171	24	158	5	58
1995 .....	9,000	45	180	23	167	2	35
1996 .....	10,000	50	200	66	185	13	44
1997 .....	10,500	35	210	58	194	15	19
1998 .....	10,600	42	212	63	194	4	26

ERS, Field Crops Branch, (202) 694-5300.

**Table 3-15.—Sunflowerseed, sunflowerseed oil, and sunflowerseed cake and meal: United States exports by country of destination 1995/96–1997/98<sup>1</sup>**

Continent and country of destination	Sunflowerseed			Sunflowerseed oil <sup>2</sup>			Sunflowerseed cake and meal		
	1995/96	1996/97	1997/98 <sup>3</sup>	1995/96	1996/97	1997/98 <sup>3</sup>	1995/96	1996/97	1997/98 <sup>3</sup>
	<i>Metric tons</i>	<i>Metric tons</i>	<i>Metric tons</i>	<i>Metric tons</i>	<i>Metric tons</i>	<i>Metric tons</i>	<i>Metric tons</i>	<i>Metric tons</i>	<i>Metric tons</i>
North and Central America; incl. Caribbean:									
Canada .....	14,202	12,306	16,404	11,470	13,610	18,733	301	84	811
Mexico .....	6,648	26,219	7,557	120,435	157,239	151,534	2,941	2,375	11,077
Total <sup>4</sup> .....	20,909	38,630	24,612	143,210	187,224	193,826	3,242	2,474	11,952
South America:									
Venezuela .....	0	0	0	2,799	10	4,999	0	0	0
Total <sup>4</sup> .....	811	1,578	556	6,498	5,423	17,931	0	0	32
Europe:									
France .....	572	1,099	32,340	0	0	97	3,215	0	0
Germany .....	52,025	52,652	47,161	6	0	0	0	45	0
Netherlands .....	10,010	8,588	38,871	7,968	6,699	1,762	0	21	0
Spain .....	27,480	26,595	36,688	0	0	0	0	0	0
Total <sup>4</sup> .....	111,125	113,348	199,416	7,995	14,760	1,886	17,664	10,412	29,237
Former Soviet Union <sup>5</sup>	2,773	51	742	705	28	26,500	0	0	0
Africa:									
Algeria .....	0	0	0	52,932	87,507	26,959	0	0	0
Egypt .....	0	0	0	71,249	47,838	11,834	0	0	0
Total <sup>4</sup> .....	224	0	38	124,181	140,294	48,149	0	0	0
Asia:									
Japan .....	1,207	1,640	804	2,370	2,452	4,596	41	0	0
Korea, Rep. of .....	1,429	707	635	129	130	101	0	0	0
Turkey .....	2,457	16,384	8,457	0	2,000	9,198	0	0	0
Total <sup>4</sup> .....	11,909	35,128	29,460	38,710	21,800	74,480	80	0	0
Oceania .....	1,500	706	880	285	0	8	0	0	0
Grand total <sup>6</sup> .....	149,252	189,442	255,704	321,584	369,529	362,781	20,986	12,886	41,221

<sup>1</sup> For sunflowerseed, year begins September 1; for sunflowerseed oil cake and meal, year begins October 1. <sup>2</sup> Crude and refined oil. <sup>3</sup> Preliminary. <sup>4</sup> Includes quantities exported to countries not shown. <sup>5</sup> Former Soviet Union; includes all 15 Republics of the USSR. <sup>6</sup> May not add due to rounding.

FAS, Cotton, Oilseeds, Tobacco and Seeds Division, (202) 720-5710. Compiled from reports of the U.S. Department of Commerce.

**Table 3-16.—Peanuts: Area, yield, production, disposition, marketing year average price per pound received by farmers, and value, United States, 1990–99**

Year	Area planted	Peanuts for nuts				
		Area harvested	Yield per acre	Production <sup>1</sup>	Marketing year average	Value of production
	<i>1,000 acres</i>	<i>1,000 acres</i>	<i>Pounds</i>	<i>1,000 pounds</i>	<i>Cents</i>	<i>1,000 dollars</i>
1990 .....	1,846.0	1,815.5	1,985	3,603,650	34.7	1,249,899
1991 .....	2,039.2	2,015.7	2,444	4,926,570	28.3	1,392,041
1992 .....	1,686.6	1,669.1	2,567	4,284,416	30.0	1,285,361
1993 .....	1,733.5	1,689.8	2,008	3,392,415	30.4	1,030,904
1994 .....	1,641.0	1,618.5	2,624	4,247,455	28.9	1,229,012
1995 .....	1,537.5	1,517.0	2,282	3,461,475	29.3	1,013,323
1996 .....	1,401.5	1,380.0	2,653	3,661,205	28.1	1,029,774
1997 .....	1,434.0	1,413.8	2,503	3,539,380	28.3	1,002,703
1998 .....	1,521.0	1,467.0	2,702	3,963,440	28.4	1,125,919
1999 <sup>2</sup> .....	1,533.0	1,427.5	2,711	3,870,200	25.6	991,827

<sup>1</sup> Estimates comprised of quota and non-quota peanuts. <sup>2</sup> Preliminary.  
NASS, Crops Branch, (202) 720-2127.

**Table 3-17.—Peanuts, farmers' stock: Stocks, production, and quantity milled, United States, 1989–98**

Year beginning August	Stocks Aug. 1 <sup>1</sup>	Production harvested for nuts <sup>1</sup>	Total supply	Milled <sup>1,2</sup>
	<i>1,000 pounds</i>	<i>1,000 pounds</i>	<i>1,000 pounds</i>	<i>1,000 pounds</i>
1989 .....	51,248	3,989,995	4,041,243	3,889,374
1990 .....	29,541	3,603,650	3,633,191	3,213,610
1991 .....	41,559	4,926,570	4,968,129	4,478,126
1992 .....	117,121	4,284,416	4,401,537	4,097,584
1993 .....	61,252	3,392,415	3,453,667	3,147,078
1994 .....	67,428	4,247,455	4,314,883	3,222,198
1995 .....	48,574	3,461,475	3,510,049	2,558,954
1996 .....	66,392	3,661,205	3,727,597	2,919,054
1997 .....	22,714	3,539,380	3,562,094	2,899,138
1998 .....	27,284	3,963,440	3,990,724	3,652,670

<sup>1</sup> Net weight basis. <sup>2</sup> Includes peanuts milled for seed.  
NASS, Crops Branch, (202) 720-2127.

**Table 3-18.—Peanuts: Crushings, and oil and meal stocks, production, and foreign trade, United States, 1989–98**

Year beginning August	Peanuts crushed (shelled basis)	Peanut oil				Peanut cake and meal	
		Stocks Aug. 1 <sup>1</sup>	Production of crude	Imports	Exports <sup>2</sup>	Stocks Aug. 1 <sup>3</sup>	Production
	<i>1,000 pounds</i>	<i>1,000 pounds</i>	<i>1,000 pounds</i>	<i>1,000 pounds</i>	<i>1,000 pounds</i>	<i>1,000 pounds</i>	<i>1,000 pounds</i>
1989 .....	469,351	29,290	193,000	1,208	18,536	29,349	261,465
1990 .....	517,712	10,970	213,112	10,000	25,000	14,702	299,820
1991 .....	828,986	21,198	356,276	1,000	151,000	8,856	459,457
1992 .....	669,942	15,572	285,904	460	59,338	9,804	377,301
1993 .....	503,674	19,779	212,216	11,421	61,145	11,395	292,093
1994 .....	738,221	4,272	314,189	3,773	96,866	13,405	415,394
1995 .....	751,281	19,763	320,909	4,678	108,146	14,910	420,919
1996 .....	520,413	26,992	220,877	14,445	20,625	7,212	294,590
1997 .....	409,249	22,936	175,853	8,118	13,097	8,291	228,276
1998 .....	345,825	29,297	145,254	72,534	10,516	24,004	192,425

<sup>1</sup> Crude plus refined. <sup>2</sup> Reported as edible peanut oil and crude peanut oil; in this tabulation added without converting. <sup>3</sup> Holding at producing mills only.

NASS, Crops Branch, (202) 720-2127, ERS, and Bureau of the Census.



**Table 3-19.—Cleaned peanuts (roasting stock): Supply and disposition, United States, 1989–98**

Year beginning August	Supply				Disposition		
	Stocks Aug. 1	Production	Imports	Total	Exports	Domestic disappearance	
						Total	Per capita
	<i>1,000 pounds</i>	<i>1,000 pounds</i>	<i>1,000 pounds</i>	<i>1,000 pounds</i>	<i>1,000 pounds</i>	<i>1,000 pounds</i>	<i>Pounds</i>
1989 .....	49,262	237,618	55	286,935	126,682	115,422	0.46
1990 .....	44,824	225,418	9	270,251	118,664	110,986	0.44
1991 .....	40,601	281,983	114	322,698	157,442	96,258	0.38
1992 .....	69,018	274,285	0	343,303	136,391	135,024	0.53
1993 .....	71,938	186,232	9	258,179	83,438	141,056	0.54
1994 .....	33,685	296,057	7,308	337,050	102,351	164,079	0.63
1995 .....	70,620	188,954	8,628	268,202	73,937	163,283	0.62
1996 .....	30,981	264,337	6,988	302,306	80,607	167,928	0.63
1997 .....	53,771	229,912	5,907	289,590	75,154	183,868	0.68
1998 .....	30,568	277,552	5,320	313,440	58,864	170,552	0.64

<sup>1</sup> Not available.

NASS, Crops Branch, (202) 720-2127, and ERS. Foreign trade from the Bureau of the Census.

**Table 3-20.—Shelled peanuts (all grades): Supply, exports, and quantity crushed, United States, 1989–98**

Year beginning August	Supply						Exports	Crushed
	Stocks Aug. 1		Production		Imports	Total		
	Edible	Oil stock	Edible	Oil stock				
	<i>1,000 pounds</i>	<i>1,000 pounds</i>	<i>1,000 pounds</i>	<i>1,000 pounds</i>	<i>1,000 pounds</i>	<i>1,000 pounds</i>	<i>1,000 pounds</i>	
1989 .....	513,679	44,397	2,319,780	374,859	1,477	3,254,192	577,807	469,351
1990 .....	455,586	15,194	1,836,052	330,102	20,571	2,657,505	401,149	517,712
1991 .....	386,155	65,950	2,538,397	616,170	27,000	3,633,672	630,000	828,986
1992 .....	595,022	57,829	2,376,782	533,641	2,000	3,565,274	611,250	669,942
1993 .....	871,207	43,760	1,748,734	425,710	1,420	3,090,831	352,500	503,674
1994 .....	679,639	42,054	1,741,824	511,635	55,385	3,030,537	583,142	738,221
1995 .....	752,814	58,188	1,253,451	491,818	108,303	2,664,574	564,021	751,281
1996 .....	370,431	126,318	1,692,581	305,674	95,041	2,590,045	440,438	520,413
1997 .....	498,954	41,000	1,694,016	290,882	101,792	2,626,644	455,264	409,249
1998 .....	580,370	14,091	2,227,037	310,459	112,643	3,198,818	377,171	345,825

NASS, Crops Branch, (202) 720-2127, and ERS. Foreign trade from the U.S. Bureau of the Census.

**Table 3-21.—Peanuts: Shelled (raw basis) by types, used in primary products and apparent disappearance of peanuts (cleaned in shell), United States, 1989–98**

Type, and year beginning August	Shelled uses					Apparent disappearance (cleaned in shell) <sup>2</sup>
	Peanut butter <sup>1</sup>	Snack	Candy	Other	Total	
	1,000 pounds	1,000 pounds	1,000 pounds	1,000 pounds	1,000 pounds	
Virginia:						
1989 .....	90,622	130,000	28,701	13,691	263,014	.....
1990 .....	101,069	142,113	26,043	17,017	286,242	.....
1991 .....	89,045	142,520	51,312	14,699	297,576	.....
1992 .....	92,355	124,875	49,223	9,442	275,895	.....
1993 .....	63,270	99,381	44,889	15,101	222,641	.....
1994 .....	51,354	97,389	26,857	15,316	190,916	.....
1995 .....	71,310	93,041	25,176	13,656	203,183	.....
1996 .....	64,274	91,882	24,158	12,852	193,166	.....
1997 .....	59,228	80,309	28,428	14,135	182,100	.....
1998 .....	57,864	99,401	36,178	3,492	196,935	.....
Runner:						
1989 .....	773,985	234,661	278,062	20,102	1,306,810	.....
1990 .....	580,691	189,254	259,995	19,483	1,049,423	.....
1991 .....	759,747	180,609	244,815	18,062	1,203,233	.....
1992 .....	674,962	203,732	259,498	14,583	1,152,775	.....
1993 .....	635,047	227,286	298,325	18,738	1,179,396	.....
1994 .....	644,711	185,377	302,697	19,325	1,152,110	.....
1995 .....	634,350	169,142	304,285	15,942	1,123,719	.....
1996 .....	634,387	176,851	318,924	19,185	1,149,347	.....
1997 .....	676,839	206,718	302,791	20,598	1,206,946	.....
1998 .....	670,705	234,486	321,838	17,719	1,244,748	.....
Spanish:						
1989 .....	32,711	28,150	23,395	2,889	87,145	.....
1990 .....	60,624	23,841	19,286	1,388	105,189	.....
1991 .....	37,575	23,132	31,490	1,412	93,609	.....
1992 .....	30,593	24,168	19,603	956	75,320	.....
1993 .....	28,689	22,200	19,204	2,462	72,555	.....
1994 .....	13,758	18,782	20,076	2,213	54,829	.....
1995 .....	22,416	14,906	21,202	2,417	60,941	.....
1996 .....	28,870	21,369	17,764	1,788	69,791	.....
1997 .....	24,163	19,881	19,798	738	64,580	.....
1998 .....	16,137	15,919	22,161	920	55,137	.....
All types:						
1989 .....	897,318	392,811	330,158	36,682	1,656,969	242,056
1990 .....	742,384	355,258	305,324	37,888	1,440,854	229,641
1991 .....	886,367	346,255	327,617	34,173	1,594,418	253,566
1992 .....	797,910	352,775	328,324	24,981	1,503,990	271,365
1993 .....	727,006	348,867	362,418	36,301	1,474,592	224,485
1994 .....	709,823	301,548	349,630	36,854	1,397,855	259,122
1995 .....	728,076	277,089	350,663	32,015	1,387,843	228,593
1996 .....	727,531	290,102	360,846	33,825	1,412,304	241,547
1997 .....	760,230	306,908	351,017	35,471	1,453,626	253,115
1998 .....	744,706	349,806	380,177	22,131	1,453,626	235,012

<sup>1</sup> Excludes peanut butter made by manufacturers for own use in candy. Includes peanut butter used in spreads, sandwiches, and cookies. <sup>2</sup> Apparent disappearance represents stocks beginning of year plus production, minus stocks at end of year.

NASS, Crops Branch, (202) 720-2127, and ERS.

**Table 3-22.—Peanuts: Area, yield, and production, by States, 1997–99**

State	Area planted			Peanuts for nuts								
	1997	1998	1999 <sup>1</sup>	Area harvested			Yield per harvested acre			Production <sup>2</sup>		
				1997	1998	1999 <sup>1</sup>	1997	1998	1999 <sup>1</sup>	1997	1998	1999 <sup>1</sup>
AL .....	194.0	198.0	206.0	193.0	197.0	205.0	1,930	2,195	2,300	372,490	432,415	471,500
FL .....	92.0	98.0	102.0	84.0	90.0	94.0	2,715	2,590	2,800	228,060	233,100	263,200
GA .....	520.0	540.0	548.0	519.0	537.0	546.0	2,570	2,815	2,600	1,333,830	1,511,655	1,419,600
NM .....	18.0	22.0	21.0	17.3	22.0	21.0	2,700	2,820	2,800	46,710	62,040	58,800
NC .....	124.0	125.0	126.0	123.0	124.5	119.0	2,680	3,190	2,450	329,640	397,155	291,550
OK .....	79.0	80.0	82.0	77.0	75.0	76.0	2,400	2,130	2,600	184,800	159,750	197,600
SC .....	11.0	12.0	12.0	10.5	11.5	11.5	2,900	2,450	2,300	30,450	28,175	26,450
TX .....	320.0	370.0	360.0	315.0	335.0	280.0	2,610	2,740	3,300	822,150	917,900	924,000
VA .....	76.0	76.0	76.0	75.0	75.0	75.0	2,550	2,950	2,900	191,250	221,250	217,500
US .....	1,434.0	1,521.0	1,533.0	1,413.8	1,467.0	1,427.5	2,503	2,702	2,711	3,539,380	3,963,440	3,870,200

<sup>1</sup> Preliminary. <sup>2</sup> Estimates comprised of quota and non-quota peanuts.

NASS, Crops Branch, (202) 720-2127.

**Table 3-23.—Peanuts: Marketing year average price, and value of production, by States, crop of 1997, 1998, and 1999**

State	Marketing year average price per pound			Value of production		
	1997	1998	1999 <sup>1</sup>	1997	1998	1999 <sup>1</sup>
	<i>Dollars</i>	<i>Dollars</i>	<i>Dollars</i>	<i>1,000 dollars</i>	<i>1,000 dollars</i>	<i>1,000 dollars</i>
AL .....	0.293	0.296	0.268	109,140	127,995	126,362
FL .....	0.280	0.298	0.232	63,857	69,464	61,062
GA .....	0.303	0.303	0.272	404,150	458,031	386,131
NM .....	0.300	0.329	0.274	14,013	20,411	16,111
NC .....	0.277	0.269	0.275	91,310	106,835	80,176
OK .....	0.293	0.308	0.281	54,146	49,203	55,526
SC .....	0.287	0.276	0.267	8,739	7,776	7,062
TX .....	0.243	0.246	0.216	199,782	225,803	199,584
VA .....	0.301	0.273	0.275	57,566	60,401	59,813
US .....	0.283	0.284	0.256	1,002,703	1,125,919	991,827

<sup>1</sup> Preliminary.  
NASS, Crops Branch, (202) 720-2127.

**Table 3-24.—Peanuts, farmers' stock: Price-support operations, United States, 1989-98**

Marketing year beginning August 1	Price support level per pound		Put under support <sup>3,4</sup>		Owned by CCC at end of marketing year <sup>4</sup>
	Quota <sup>1</sup>	Additional <sup>2</sup>	Quantity	Percentage of production	
	<i>Cents</i>	<i>Cents</i>	<i>Million pounds</i>	<i>Percent</i>	<i>Million pounds</i>
1989/90 .....	30.8	7.5	401	10.0	0
1990/91 .....	31.6	7.5	576	16.0	0
1991/92 .....	32.1	7.5	1,070	21.7	0
1992/93 .....	33.8	6.6	436	10.2	0
1993/94 .....	33.8	6.6	324	9.6	0
1994/95 .....	33.9	6.6	820	19.3	0
1995/96 .....	33.9	6.6	818	24.0	0
1996/97 .....	30.5	6.6	320	8.7	0
1997/98 .....	30.5	6.6	417	11.8	0
1998/99 .....	30.5	8.8			0

<sup>1</sup> Quota peanuts are those peanuts grown within the farm poundage quota. <sup>2</sup> Additional peanuts are those peanuts grown in excess of the quota. <sup>3</sup> Includes loans made and direct purchases. <sup>4</sup> Includes shelled peanuts converted to farmers' stock basis.

FSA, Tobacco and Peanuts Division, (202) 720-5291.

**Table 3-25.—Peanuts: Simple average of monthly f.o.b. price per pound of cleaned and shelled peanuts by approximate crop years, 1989-98<sup>1</sup>**

Classification	1989	1990	1991	1992	1993	1994	1995	1996	1997	1998
Southeastern area:										
Georgia, Alabama, and Florida:										
Shelled:										
Runner Jumbo .....	60	57¼	102¾	68¾	63¾	68½	67½	60¾	62	59
Runner Medium .....	56½	55¾	96¼	64¾	60¼	62½	66	59½	60%	56
Runner U.S. Splits .....	55¾	55	111%	63¾	59½	62¾	65½	57	57¾	56¼
Virginia-North Carolina:										
Clean unshelled Virginias:										
Fancy .....	46½	45¾	69%	47¾	50¾	72¾	57¼	49¾	54½	45¾
Shelled Virginias:										
Extra large .....	63¾	62½	95	68½	74¼	77½	68½	66½	69½	62
Medium .....	58%	60½	98%	64%	61¼	75½	67½	60¼	64%	59¼
No. 2 with 70% splits .....	51%	56½	91¾	59%	59¼	61¾	60½	55½	56%	53¾
Southwestern area:										
Texas and Oklahoma:										
Shelled:										
Spanish No. 1 .....	59%	56½	103¼	64%	61%	62¾	65½	60¼	60%	72
Spanish U.S. Splits .....	56½	55½	108¾	63½	61½	64¾	66¼	58	58¼	60½
New Mexico:										
Handpicked unshelled Valencias <sup>2</sup> ...	NA	NA	NA	55½	58	65	61¼	62½	65¾	63½

<sup>1</sup> Crop year begins about Oct. 1 in the Virginia-North Carolina area; in August, in the Southeastern and the Southwestern States. Prices are for shipment within 6 months. <sup>2</sup> No U.S. grade standards apply to Valencia peanuts. NA not available.

AMS, Fruit and Vegetable Division, Market News Branch (912) 228-1208.

**Table 3-26.—Peanuts: <sup>1</sup> Area, yield, and production in specified countries and the world, 1996–97/1998–99**

Continent and country	Area <sup>2</sup>			Yield per hectare			Production		
	1996/ 97	1997/ 98	1998/ 99 <sup>3</sup>	1996/ 97	1997/ 98	1998/ 99 <sup>3</sup>	1996/ 97	1997/ 98	1998/ 99 <sup>3</sup>
	1,000 hec- tares	1,000 hec- tares	1,000 hec- tares	Metric tons	Metric tons	Metric tons	1,000 metric tons	1,000 metric tons	1,000 metric tons
<b>North America and Caribbean:</b>									
Mexico .....	80	92	85	1.40	1.49	1.41	112	137	120
United States .....	558	572	594	2.98	2.81	3.03	1,661	1,605	1,798
Total <sup>4</sup> .....	639	666	681	2.78	2.62	2.82	1,774	1,744	1,920
<b>South America:</b>									
Argentina .....	275	390	320	1.09	1.60	1.06	300	625	340
Brazil .....	88	96	90	1.59	1.94	1.89	140	186	170
Total <sup>4</sup> .....	424	552	475	1.20	1.60	1.22	508	882	580
<b>Africa:</b>									
Benin .....	104	121	121	0.81	0.84	0.84	84	102	102
Burkina Faso .....	280	233	233	0.82	0.65	0.65	230	152	152
Burundi .....	13	12	12	0.85	0.83	0.83	11	10	10
Cameroon .....	320	320	420	0.53	0.28	0.40	171	90	170
Central African Republic .....	97	100	100	0.94	0.97	1.00	91	97	100
Chad .....	300	315	315	0.67	0.79	0.79	200	250	250
Gambia, The .....	64	70	70	0.72	1.11	1.11	46	78	78
Ghana .....	164	160	160	0.81	0.84	0.84	133	135	135
Guinea .....	152	160	160	0.91	0.91	0.91	139	146	146
Cote d'Ivoire .....	140	140	135	1.05	1.02	1.01	147	143	136
Mali .....	168	136	136	0.93	0.99	0.99	157	134	134
Niger .....	270	270	270	0.37	0.37	0.37	100	100	100
Nigeria .....	650	700	750	0.50	0.50	0.50	325	350	375
Senegal .....	920	728	620	0.70	0.70	0.89	646	506	550
South Africa, Republic of .....	95	59	95	1.47	1.64	1.53	140	97	145
Sudan .....	550	550	550	0.67	0.67	0.67	370	370	370
Uganda .....	195	197	196	0.64	0.68	0.66	125	134	130
Zaire .....	725	720	720	0.79	0.78	0.78	570	565	565
Zimbabwe .....	207	190	224	0.74	0.32	0.5	153	60	113
Total <sup>4</sup> .....	6,232	6,009	6,147	0.71	0.70	0.72	4,453	4,194	4,445
<b>Asia:</b>									
Burma .....	517	478	478	1.15	1.17	1.17	593	559	559
China, Peoples Republic of .....	3,616	3,722	4,039	2.80	2.59	2.94	10,140	9,648	11,886
India .....	7,814	7,198	8,100	1.15	1.05	0.92	9,024	7,580	7,450
Indonesia .....	630	650	650	1.56	1.52	1.52	985	990	990
Pakistan .....	105	105	105	1.10	1.12	1.12	115	118	118
Taiwan .....	35	35	35	2.26	2.14	2.14	79	75	75
Thailand .....	99	100	103	1.48	1.48	1.50	147	148	155
Turkey .....	34	35	34	2.35	2.34	2.35	80	82	80
Vietnam .....	263	251	250	1.36	1.41	1.4	358	353	350
Total <sup>4</sup> .....	13,184	12,645	13,866	1.64	1.55	1.57	21,580	19,607	21,714
World total <sup>4</sup> .....	20,571	19,967	21,266	1.39	1.33	1.36	28,530	26,633	28,865

<sup>1</sup> Peanuts in the shell. Split year includes Northern Hemisphere crop harvested in the late months of the first year shown combined with Southern Hemisphere and certain Northern Hemisphere crops harvested in the early months of the following year. <sup>2</sup> Harvested area as far as possible. <sup>3</sup> Preliminary. <sup>4</sup> Regional totals include other countries not shown. World total for all countries in USDA data base.

FAS, Production Estimates and Crop Assessment Division, (202) 720-0888. Prepared or estimated on the basis of official statistics of foreign governments, other foreign source materials, reports of U.S. Agricultural Counselors, Attaches, and Foreign Service Officers, results of office research, and related information.

**Table 3-27.—Soybeans: Area, yield, production, and value, United States, 1990–99**

Year	Area planted	Soybeans for beans				
		Area harvested	Yield per acre	Production	Marketing year average price per bushel received by farmers	Value of production
	<i>1,000 acres</i>	<i>1,000 acres</i>	<i>Bushels</i>	<i>1,000 bushels</i>	<i>Dollars</i>	<i>1,000 dollars</i>
1990 .....	57,795	56,512	34.1	1,925,947	5.74	11,042,010
1991 .....	59,180	58,011	34.2	1,986,539	5.58	11,091,996
1992 .....	59,180	58,233	37.6	2,190,354	5.56	12,167,564
1993 .....	60,085	57,307	32.6	1,869,718	6.40	11,941,449
1994 .....	61,620	60,809	41.4	2,514,869	5.48	13,746,071
1995 .....	62,495	61,544	35.3	2,174,254	6.72	14,599,145
1996 .....	64,195	63,349	37.6	2,380,274	7.35	17,439,971
1997 .....	70,005	69,110	38.9	2,688,750	6.47	17,372,628
1998 .....	72,025	70,441	38.9	2,741,014	4.93	13,493,891
1999 .....	73,780	72,476	36.5	2,642,908	4.75	12,451,149

NASS, Crops Branch, (202) 720-2127.

**Table 3-28.—Soybeans: Stocks on and off farms, United States, 1990–99**

Year	On farms				Off farms <sup>1</sup>			
	Dec. 1	Mar. 1	June 1 <sup>2</sup>	Sep. 1	Dec. 1	Mar. 1	June 1 <sup>2</sup>	Sep. 1
	<i>1,000 bushels</i>	<i>1,000 bushels</i>	<i>1,000 bushels</i>	<i>1,000 bushels</i>	<i>1,000 bushels</i>	<i>1,000 bushels</i>	<i>1,000 bushels</i>	<i>1,000 bushels</i>
1990 .....	754,000	555,500	336,500	118,400	929,963	634,619	387,022	210,642
1991 .....	810,000	505,000	279,000	105,000	962,732	672,343	416,671	173,437
1992 .....	876,100	576,900	319,800	124,970	959,885	638,667	363,613	167,314
1993 .....	697,400	425,700	195,000	59,080	876,220	595,917	360,260	150,037
1994 .....	985,800	635,300	348,800	105,130	1,116,156	734,898	443,072	229,684
1995 .....	861,500	512,000	234,100	59,523	971,929	678,356	388,701	123,935
1996 .....	935,100	514,000	216,000	43,600	889,984	541,754	283,890	88,233
1997 .....	1,048,000	637,000	318,000	84,300	951,417	565,922	275,654	115,499
1998 .....	1,187,000	815,000	458,000	145,000	999,440	642,338	390,573	203,482
1999 <sup>3</sup> .....	1,150,000	NA	NA	NA	1,032,192	NA	NA	NA

<sup>1</sup> Includes stocks at mills, elevators, warehouses, terminals, and processors. <sup>2</sup> Old crop only. <sup>3</sup> Preliminary. NA—not available.

NASS, Crops Branch, (202) 720-2127.

**Table 3-29.—Soybeans: Supply and disappearance, United States, 1989–98**

Year beginning September	Supply				
	Stocks by position			Production	Total <sup>1</sup>
	Farm	Terminal market, interior mill, elevator, and warehouse	Total		
<i>1,000 bushels</i>	<i>1,000 bushels</i>	<i>1,000 bushels</i>	<i>1,000 bushels</i>	<i>1,000 bushels</i>	
1989 .....	87,320	94,709	182,029	1,923,666	2,108,189
1990 .....	86,000	153,139	239,139	1,925,947	2,168,578
1991 .....	118,400	210,642	329,042	1,986,539	2,319,025
1992 .....	105,000	173,437	278,437	2,190,354	2,470,846
1993 .....	124,970	167,314	292,284	1,869,718	2,168,418
1994 .....	59,080	150,037	209,117	2,514,869	2,729,464
1995 .....	105,130	229,684	334,814	2,174,254	2,513,524
1996 .....	59,523	123,935	183,458	2,380,274	2,572,636
1997 .....	43,600	88,233	131,833	2,688,750	2,825,589
1998 <sup>2</sup> .....	84,300	115,499	199,799	2,741,014	2,940,813

Year beginning September	Disappearance			
	Crushed <sup>3</sup>	Seed, feed and residual	Exports	Total
	<i>1,000 bushels</i>	<i>1,000 bushels</i>	<i>1,000 bushels</i>	<i>1,000 bushels</i>
1989 .....	1,146,434	99,732	622,886	1,869,050
1990 .....	1,187,287	94,943	557,315	1,839,536
1991 .....	1,253,537	103,106	683,943	2,040,588
1992 .....	1,278,953	130,035	769,573	2,178,562
1993 .....	1,275,648	95,589	589,064	1,959,301
1994 .....	1,405,156	151,368	838,125	2,394,650
1995 .....	1,369,541	109,346	851,179	2,330,066
1996 .....	1,436,961	122,997	881,845	2,440,803
1997 .....	1,596,983	158,447	870,361	2,625,790
1998 <sup>2</sup> .....	1,590,000	205,000	801,000	2,596,000

<sup>1</sup> Includes imports, beginning with 1988. <sup>2</sup> Preliminary. <sup>3</sup> Reported by the U.S. Department of Commerce. ERS, Field Crops Branch, (202) 694-5300.

**Table 3-30.—Soybeans, soybean meal, and oil: Average price at specified markets, 1989–98**

Year <sup>1</sup>	Soybeans per bushel: No. 1 Yellow Chicago	Soybean oil per pound crude, tanks, f.o.b. Decatur	Soybean meal per short ton: 48 percent protein Decatur	Year <sup>1</sup>	Soybeans per bushel: No. 1 Yellow Chicago	Soybean oil per pound crude, tanks, f.o.b. Decatur	Soybean meal per short ton: 48 percent protein Decatur
	<i>Dollars</i>	<i>Cents</i>	<i>Dollars</i>		<i>Dollars</i>	<i>Cents</i>	<i>Dollars</i>
1989 .....	5.79	22.18	186.48	1994 .....	5.65	27.60	162.55
1990 .....	5.73	20.80	181.38	1995 .....	7.08	24.75	236.00
1991 .....	5.69	18.94	189.21	1996 .....	6.94	22.50	270.90
1992 .....	5.89	21.40	193.75	1997 .....	6.85	25.84	185.54
1993 .....	6.52	27.00	192.86	1998 .....	5.47	19.90	138.50

<sup>1</sup> Year beginning September for soybeans and October for oil and meal. ERS, Field Crops Branch, (202) 694-5300.

**Table 3-31.—Soybeans: Area, yield, and production, by States, 1997–99**

State	Area planted			Soybeans for beans								
	1997	1998	1999 <sup>1</sup>	Area harvested			Yield per harvested acre			Production		
				1997	1998	1999 <sup>1</sup>	1997	1998	1999 <sup>1</sup>	1997	1998	1999 <sup>1</sup>
	1,000 acres	1,000 acres	1,000 acres	1,000 acres	1,000 acres	1,000 acres	Bush-els	Bush-els	Bush-els	1,000 bushels	1,000 bushels	1,000 bushels
AL .....	350	340	240	340	320	200	25.0	22.0	16.0	8,500	7,040	3,200
AR .....	3,650	3,550	3,450	3,600	3,400	3,350	30.5	25.0	28.0	109,800	85,000	93,800
DE .....	230	220	205	225	216	201	29.0	33.0	27.0	6,525	7,128	5,427
FL .....	47	35	20	45	30	19	25.0	23.0	32.0	1,125	690	608
GA .....	400	300	220	380	220	190	21.0	21.0	19.0	7,980	4,620	3,610
IL .....	10,000	10,600	10,600	9,950	10,550	10,550	43.0	44.0	42.0	427,850	464,200	443,100
IN .....	5,350	5,600	5,600	5,300	5,500	5,550	43.5	42.0	39.0	230,550	231,000	216,450
IA .....	10,500	10,400	10,800	10,400	10,350	10,750	46.0	48.0	44.5	478,400	496,800	478,375
KS .....	2,400	2,550	2,850	2,350	2,500	2,800	37.0	30.0	28.0	86,950	75,000	78,400
KY .....	1,240	1,220	1,200	1,220	1,200	1,150	34.5	30.0	21.0	42,090	36,000	24,150
LA .....	1,400	1,200	1,020	1,350	1,070	990	29.0	21.0	27.0	39,150	22,470	26,730
MD .....	530	470	490	520	460	480	30.0	31.0	30.0	15,600	14,260	14,400
MI .....	1,870	1,900	1,950	1,860	1,890	1,940	38.5	39.0	40.0	71,610	73,710	77,600
MN .....	6,600	6,900	7,000	6,550	6,800	6,900	39.0	42.0	41.0	255,450	285,600	282,900
MS .....	2,100	2,050	1,950	2,070	2,000	1,900	31.0	24.0	23.5	64,170	48,000	44,650
MO .....	4,900	5,100	5,400	4,850	5,000	5,350	36.0	34.0	27.5	174,600	170,000	147,125
NE .....	3,600	3,800	4,300	3,550	3,750	4,250	40.5	44.0	42.5	143,775	165,000	180,625
NJ .....	133	115	105	130	113	98	31.0	28.0	24.0	4,030	3,164	2,352
NY <sup>2</sup> .....	.....	100	130	.....	97	128	.....	41.0	37.0	.....	3,977	4,736
NC .....	1,400	1,475	1,400	1,330	1,415	1,300	29.0	27.0	23.0	38,570	38,205	29,900
ND .....	1,150	1,500	1,350	1,140	1,475	1,340	29.5	32.0	35.0	33,630	47,200	46,900
OH .....	4,350	4,400	4,600	4,340	4,390	4,500	44.0	44.0	36.0	190,960	193,160	162,000
OK .....	340	470	480	330	340	360	30.0	18.0	19.0	9,900	6,120	6,840
PA .....	375	400	370	370	395	350	37.0	40.0	29.0	13,690	15,800	10,150
SC .....	580	540	480	570	500	450	22.5	21.0	20.0	12,825	10,500	9,000
SD .....	3,300	3,450	4,100	3,250	3,400	4,070	35.0	39.0	36.0	113,750	132,600	146,520
TN .....	1,240	1,250	1,250	1,200	1,210	1,190	34.0	29.0	18.0	40,800	35,090	21,420
TX .....	420	440	400	400	270	380	28.0	22.0	27.0	11,200	5,940	10,260
VA .....	510	500	470	490	480	440	23.0	23.0	27.0	11,270	11,040	11,880
WI .....	1,040	1,150	1,350	1,000	1,100	1,300	44.0	47.0	46.0	44,000	51,700	59,800
US .....	70,005	72,025	73,780	69,110	70,441	72,476	38.9	38.9	36.5	2,688,750	2,741,014	2,642,908

<sup>1</sup>Preliminary. <sup>2</sup>Estimates began with 1998 crop year.  
NASS, Crops Branch, (202) 720092127.

**Table 3-32.—Soybeans: Crushings, and oil and meal stocks, production, and foreign trade, United States, 1989–98**

Year beginning October	Soybeans crushed					Soybean oil			Soybean cake and meal		
	Oct.-Dec.	Jan.-Mar.	Apr.-Jun.	Jul.-Sep.	Total	Stocks Oct. 1	Production	Exports	Stocks Oct. 1	Production	Exports
	1,000 bushels	1,000 bushels	1,000 bushels	1,000 bushels	1,000 bushels	Million pounds	Million pounds	Million pounds	1,000 tons	1,000 tons	1,000 tons
1989 .....	304,217	301,797	280,536	278,498	1,165,048	1,715	13,004	1,353	173	27,719	5,319
1990 .....	314,756	297,929	280,071	301,328	1,194,084	1,305	13,408	780	318	28,325	5,469
1991 .....	333,345	319,952	296,757	305,850	1,255,904	1,786	14,345	1,648	285	29,831	6,945
1992 .....	343,196	331,987	312,342	288,639	1,276,164	2,239	13,778	1,419	230	30,364	6,232
1993 .....	342,257	327,307	305,734	307,371	1,282,668	1,555	13,951	1,529	204	30,514	5,356
1994 .....	370,273	371,891	339,189	325,301	1,406,654	1,103	15,613	2,680	150	33,265	6,717
1995 .....	369,123	349,481	325,929	318,490	1,363,023	1,137	15,240	1,992	223	32,527	6,002
1996 .....	398,225	392,509	334,449	320,681	1,445,865	2,015	15,752	2,037	212	34,211	6,994
1997 .....	438,067	436,997	375,370	359,693	1,610,077	1,520	18,143	3,079	210	38,176	9,329
1998 <sup>1</sup> .....	430,007	430,951	377,607	387,989	1,599,554	1,382	18,081	2,372	218	37,792	7,117

<sup>1</sup> Preliminary.  
ERS, Field Crops Branch, (202) 694-5300. Data from the U.S. Department of Commerce.

**Table 3-33.—Soybeans for beans: Marketing year average price and value of production, by States, crop of 1997, 1998, and 1999**

State	Marketing year average price per bushel			Value of production		
	1997	1998	1999 <sup>1</sup>	1997	1998	1999 <sup>1</sup>
	<i>Dollars</i>	<i>Dollars</i>	<i>Dollars</i>	<i>1,000 dollars</i>	<i>1,000 dollars</i>	<i>1,000 dollars</i>
AL	6.65	5.30	4.60	56,525	37,312	14,720
AR	6.88	5.38	4.95	755,424	457,300	464,310
DE	7.00	5.31	4.60	45,675	37,850	24,964
FL	7.00	5.20	4.65	7,875	3,588	2,827
GA	6.68	5.24	4.60	53,306	24,209	16,606
IL	6.56	5.01	4.95	2,806,696	2,325,642	2,193,345
IN	6.59	5.05	4.75	1,519,325	1,166,550	1,028,138
IA	6.33	4.79	4.65	3,028,272	2,379,672	2,224,444
KS	6.42	4.98	4.65	558,219	373,500	364,560
KY	6.76	5.15	4.95	284,528	185,400	119,543
LA	6.98	5.62	5.25	273,267	126,281	140,333
MD	6.90	5.21	4.55	107,640	74,295	65,520
MI	6.47	4.99	4.70	463,317	367,813	364,720
MN	6.20	4.65	4.55	1,583,790	1,328,040	1,287,195
MS	6.90	5.63	5.10	442,773	270,240	227,715
MO	6.39	4.90	4.80	1,115,694	833,000	706,200
NE	6.28	4.83	4.60	902,907	796,950	830,875
NJ	6.75	5.20	4.55	27,203	16,453	10,702
NY <sup>2</sup>	.....	5.10	4.20	.....	20,283	19,891
NC	6.68	5.03	4.65	257,648	192,171	139,035
ND	6.10	4.64	4.10	205,143	219,008	192,290
OH	6.49	4.99	4.80	1,239,330	963,868	777,600
OK	6.40	4.80	4.30	63,360	29,376	29,412
PA	6.80	4.95	4.50	93,092	78,210	45,675
SC	6.55	5.00	4.50	84,004	52,500	40,500
SD	6.11	4.60	4.40	695,013	609,960	644,688
TN	6.89	5.37	4.75	281,112	188,433	101,745
TX	6.33	4.50	4.10	70,896	26,730	42,066
VA	6.20	5.30	4.50	69,874	58,512	53,460
WI	6.38	4.85	4.65	280,720	250,745	278,070
US	6.47	4.93	4.75	17,372,628	13,493,891	12,451,149

<sup>1</sup> Preliminary. <sup>2</sup> Estimates began in 1998.  
 NASS, Crops Branch, (202) 720-2127.

**Table 3-34.—Soybeans: Support operations, United States, 1990-99**

Marketing year beginning September 1	Loan rate per bushel <sup>1</sup>	Put under loan <sup>2</sup>		Acquired by CCC under loan program <sup>3</sup>	Owned by CCC at end of marketing year
		Quantity	Percentage of production		
	<i>Dollars</i>	<i>Million bushels</i>	<i>Percent</i>	<i>Million bushels</i>	<i>Million bushels</i>
1990/91	4.50	241.5	12.5	0.0	0.0
1991/92	5.02	158.8	8.0	1.6	0.0
1992/93	5.02	182.1	8.3	0.0	0.0
1993/94	5.02	87.1	4.7	0.0	0.0
1994/95	4.92	375.0	14.9	0.0	0.5
1995/96	4.92	181.8	8.4	0.0	0.0
1996/97	4.97	195.9	8.2	0.0	0.0
1997/98	5.26	266.3	9.9	0.5	0.0
1998/99	5.26	340.1	12.4	7.7	3.8
1999/2000	5.26	.....	.....	.....	.....

<sup>1</sup> The national average loan rate was also known as the price support rate prior to enactment of the Federal Agriculture Improvement and Reform Act of 1996. <sup>2</sup> Includes loans made, purchase agreements entered into, and direct purchases. Statutory authority for purchases ceased, beginning with the 1991 crop. <sup>3</sup> Acquisitions through loans and purchases (under agreement and direct) from the crop harvested in the year indicated and not acquisitions during that year.  
 FSA, Feed Grains & Oilseeds Analysis Group, (202) 720-4417.



**Table 3-35.—Soybeans: Area, yield, and production in specified countries and the world, 1996–97/1998–99<sup>1</sup>**

Continent and country	Area <sup>2</sup>			Yield per hectare			Production		
	1996/97	1997/98	1998/99 <sup>3</sup>	1996/97	1997/98	1998/99 <sup>3</sup>	1996/97	1997/98	1998/99 <sup>3</sup>
	1,000 hectares	1,000 hectares	1,000 hectares	Metric tons	Metric tons	Metric tons	1,000 metric tons	1,000 metric tons	1,000 metric tons
<b>North America:</b>									
Canada .....	860	1,060	980	2.52	2.58	2.79	2,165	2,738	2,737
Mexico .....	52	128	89	1.17	1.48	1.61	61	189	143
United States .....	25,637	27,968	28,507	2.53	2.62	2.62	64,780	73,176	74,598
<b>Total .....</b>	<b>26,576</b>	<b>29,188</b>	<b>29,616</b>	<b>2.52</b>	<b>2.61</b>	<b>2.62</b>	<b>67,073</b>	<b>76,182</b>	<b>77,559</b>
<b>South America:</b>									
Argentina .....	6,200	6,954	7,500	1.81	2.80	2.65	11,200	19,500	19,900
Bolivia .....	530	535	400	1.96	2.00	1.55	1,040	1,071	620
Brazil .....	11,800	13,000	12,900	2.31	2.50	2.40	27,300	32,500	31,000
Colombia .....	35	35	35	2.00	2.17	2.17	70	76	76
Ecuador .....	32	5	8	1.25	1.40	1.88	40	7	15
Paraguay .....	1,200	1,200	1,200	2.31	2.49	2.50	2,771	2,988	3,000
Peru .....	5	5	5	1.40	1.40	1.40	7	7	7
Uruguay .....	8	8	8	1.75	1.75	1.75	14	14	14
Venezuela .....	5	5	5	2.00	2.00	1.80	10	10	9
<b>Total .....</b>	<b>19,815</b>	<b>21,747</b>	<b>22,061</b>	<b>2.14</b>	<b>2.58</b>	<b>2.48</b>	<b>42,452</b>	<b>56,173</b>	<b>54,641</b>
<b>European Union:</b>									
Austria .....	13	15	20	2.08	2.20	2.50	27	33	50
France .....	85	97	111	2.71	2.89	2.52	230	280	280
Germany .....	2	2	1	2.50	2.50	3.00	5	5	3
Italy .....	231	338	382	3.77	3.68	3.12	871	1,243	1,192
Spain .....	6	4	4	1.83	2.25	2.50	11	9	10
<b>Total .....</b>	<b>337</b>	<b>456</b>	<b>518</b>	<b>3.39</b>	<b>3.44</b>	<b>2.96</b>	<b>1,144</b>	<b>1,570</b>	<b>1,535</b>
<b>Other Western Europe:</b>									
Switzerland .....	2	2	2	2.50	3.00	3.00	5	6	6
<b>Eastern Europe:</b>									
Bulgaria .....	16	6	10	0.63	1.67	0.60	10	10	6
Hungary .....	12	13	24	2.33	2.31	2.17	28	30	52
Romania .....	80	62	145	1.44	1.95	1.38	115	121	200
Yugoslavia .....	94	80	120	2.06	2.46	2.13	194	197	255
<b>Total .....</b>	<b>203</b>	<b>162</b>	<b>300</b>	<b>1.71</b>	<b>2.22</b>	<b>1.71</b>	<b>348</b>	<b>359</b>	<b>514</b>
<b>Africa:</b>									
Egypt .....	15	13	18	2.60	2.69	2.61	39	35	47
Morocco .....	1	1	1	1.00	1.00	1.00	1	1	1
Nigeria .....	659	543	550	0.32	0.41	0.25	211	220	140
South Africa, Republic of .....	87	125	131	1.38	1.58	1.34	120	197	175
Zambia .....	25	15	25	1.16	0.80	1.40	29	12	35
Zimbabwe .....	60	64	51	1.67	1.58	2.16	100	101	110
<b>Total .....</b>	<b>847</b>	<b>761</b>	<b>776</b>	<b>0.59</b>	<b>0.74</b>	<b>0.65</b>	<b>500</b>	<b>566</b>	<b>508</b>
<b>Asia and the Middle East:</b>									
Burma .....	72	69	69	0.92	0.90	0.90	66	62	62
China, Peoples Republic of .....	7,470	8,346	8,200	1.77	1.76	1.83	13,220	14,728	15,000
India .....	5,000	5,600	6,350	0.82	0.96	0.94	4,100	5,350	6,000
Indonesia .....	1,180	1,090	1,075	1.24	1.20	1.21	1,460	1,306	1,300
Iran .....	87	90	90	1.54	1.61	1.61	134	145	145
Japan .....	82	83	109	1.80	1.75	1.45	148	145	158
Korea, Democratic People's .....	325	325	325	1.29	1.29	1.29	420	420	420
Korea, Republic of .....	98	100	98	1.63	1.56	1.43	160	156	140
Pakistan .....	2	6	7	1.50	1.17	1.29	3	7	9
Philippines .....	6	6	6	1.50	1.50	1.50	9	9	9
Sri Lanka .....	1	1	1	1.00	1.00	1.00	1	1	1
Syria .....	6	5	5	1.50	1.20	1.20	9	6	6
Taiwan .....	5	1	1	2.00	2.00	2.00	10	2	2
Thailand .....	256	236	230	1.41	1.43	1.46	360	338	335
Turkey .....	40	30	25	1.63	1.33	1.60	65	40	40
Vietnam .....	110	100	100	1.04	1.03	1.05	114	103	105
<b>Total .....</b>	<b>14,740</b>	<b>16,088</b>	<b>16,691</b>	<b>1.38</b>	<b>1.42</b>	<b>1.42</b>	<b>20,279</b>	<b>22,818</b>	<b>23,732</b>
<b>Oceania:</b>									
Australia .....	39	52	48	2.15	1.79	2.27	84	93	109
<b>World total .....</b>	<b>63,079</b>	<b>68,880</b>	<b>70,478</b>	<b>2.10</b>	<b>2.29</b>	<b>2.26</b>	<b>132,193</b>	<b>158,072</b>	<b>158,931</b>

<sup>1</sup> Split year includes Northern Hemisphere crop harvested in the late months of the first year shown combined with Southern Hemisphere and certain Northern Hemisphere crops harvested in the early months of the following year. <sup>2</sup> Harvested area as far as possible. <sup>3</sup> Preliminary.

FAS, Production Estimates and Crop Assessment Division, (202) 720-0888. Prepared or estimated on the basis of official statistics of foreign governments, other foreign source materials, reports of U.S. Agricultural Counselors, Attaches, and Foreign Service Officers, results of office research, and related information.

**Table 3-36.—Soybeans, soybean oil, and soybean cake and meal: United States exports by country of destination, 1995/96–1997/98<sup>1</sup>**

Continent and country of destination	Soybeans			Soybean oil <sup>2</sup>			Soybean cake and meal		
	1995/96	1996/97	1997/98 <sup>3</sup>	1995/96	1996/97	1997/98 <sup>3</sup>	1995/96	1996/97	1997/98 <sup>3</sup>
	Metric tons	Metric tons	Metric tons	Metric tons	Metric tons	Metric tons	Metric tons	Metric tons	Metric tons
North and Central America; incl. Caribbean:									
Canada .....	225,227	132,082	213,658	58,756	26,705	11,343	647,340	729,664	779,653
Costa Rica .....	142,541	154,557	153,712	1,018	99	132	5	91	57
Jamaica .....	0	0	296	12,839	15,529	18,588	66,426	73,758	82,762
Mexico .....	2,717,529	3,098,689	3,197,814	81,901	102,950	99,112	81,069	202,207	156,565
Total <sup>4</sup> .....	3,185,029	3,471,328	3,622,889	222,170	226,705	265,630	1,394,726	1,666,102	1,761,482
South America:									
Brazil .....	190,698	638,038	29,628	66	9	0	3,174	0	0
Colombia .....	135,862	106,979	68,381	6,270	28,634	29,067	215,861	311,261	126,008
Peru .....	0	22,005	5,996	37,726	49,426	62,085	157	78,221	283,699
Venezuela .....	302,003	188,915	68,419	517	642	1,476	310,024	468,303	353,806
Total <sup>4</sup> .....	645,249	1,521,599	187,813	52,209	91,208	98,688	640,234	1,040,944	905,374
Europe:									
Belgium and Luxembourg .....	746,664	696,197	300,971	0	31	0	0	0	0
Denmark .....	61,920	41,453	19,015	0	0	0	189,729	118,436	135,851
France .....	378,628	350,644	222,937	27	0	7	15,253	259,029	0
Germany .....	1,239,883	1,117,899	892,837	6,968	5,788	4,804	52,191	110,048	143
Greece .....	153,183	168,022	126,263	19	0	1,289	28,609	22,835	12,133
Italy .....	485,977	154,141	228,623	0	4,300	98	184,433	341,129	56,529
Netherlands .....	2,762,290	2,671,542	1,850,128	2,584	3,182	10,949	430,817	305,106	248,313
Norway .....	0	0	0	0	0	0	0	144	0
Spain .....	1,338,822	1,616,999	1,223,528	0	5,000	2,100	169,684	474,432	43,169
United Kingdom .....	336,916	481,549	318,555	51	98	283	100,924	125,232	110,089
Total <sup>4</sup> .....	7,891,130	7,770,796	5,444,135	14,003	20,016	23,227	1,350,619	2,171,636	907,935
Former Soviet Union: <sup>5</sup>									
Russia .....	0	0	136,366	751	1,292	1,498	282	8,113	258,885
Ukraine .....	0	16	0	1,194	753	0	32,780	0	0
Total <sup>4</sup> .....	16,506	16	212,266	8,027	10,924	11,519	36,061	27,604	284,308
Africa:									
Egypt .....	75,814	63,324	40,477	1,899	20,696	44,954	164,861	145,103	94,738
Morocco .....	58,139	62,996	52,935	46,682	30,493	43,346	48,899	27,793	48,406
Total <sup>4</sup> .....	166,697	144,263	94,052	89,551	94,675	132,112	508,673	551,901	364,641
Asia:									
China .....	1,559,138	1,463,147	1,464,124	338,970	496,306	217,078	566,181	739,048	97,318
India .....	0	0	0	26,675	38,610	71,685	0	0	0
Israel .....	516,519	382,795	496,218	37	2,258	7,633	15,418	5,305	37,393
Japan .....	3,621,249	3,566,981	3,648,454	1,982	2,348	3,583	258,823	217,492	263,316
Korea, Rep. of .....	1,511,322	1,065,681	1,279,776	29,041	43,614	125,474	4,025	289,876	17,837
Philippines .....	138,912	130,261	209,162	79	22,018	21	479,163	681,145	738,233
Taiwan .....	2,029,874	1,563,531	1,897,994	67	7,777	25,929	180	674	454
Total <sup>4</sup> .....	11,324,122	9,905,398	11,026,472	536,026	942,612	544,672	2,223,716	2,839,591	1,964,013
Oceania:									
Australia .....	68,209	36,299	32,358	0	4,595	13	132,674	108,198	202,810
Total <sup>4</sup> .....	68,209	36,299	32,360	350	10,643	13	181,726	160,797	268,830
Grand Total <sup>6,7</sup> .....	24,109,918	23,760,526	21,813,170	922,336	1,396,782	1,075,860	6,344,512	8,463,573	6,456,583

<sup>1</sup>For soybeans, year begins September 1; for soybean oil and cake and meal, year begins October 1. <sup>2</sup>Crude and refined oil (includes shipments under P.L. 480). <sup>3</sup>Preliminary. <sup>4</sup>Includes quantities exported to countries not shown. <sup>5</sup>Former Soviet Union; includes all 15 Republics of the USSR. <sup>6</sup>May not add due to rounding. <sup>7</sup>Includes quantities transhipped via Canada to unidentified countries.

FAS, Cotton, Oilseeds, Tobacco and Seeds Division, (202) 720-5710. Compiled from reports of the U.S. Department of Commerce.

**Table 3-37.—Soybeans: International trade, 1994/95–1998/99<sup>1</sup>**

Country	1994/95	1995/96	1996/97	1997/98	1998/99
	<i>1,000 metric tons</i>	<i>1,000 metric tons</i>	<i>1,000 metric tons</i>	<i>1,000 metric tons</i>	<i>1,000 metric tons</i>
Principal exporting countries:					
United States .....	22,867	23,108	24,110	23,761	21,813
Brazil .....	3,492	3,633	8,340	9,325	9,300
Argentina .....	2,614	2,014	750	3,231	3,300
Paraguay .....	1,450	1,600	2,150	2,390	2,400
Netherlands .....	268	159	168	560	1,100
Canada .....	542	599	478	769	850
Subtotal .....	31,233	31,113	35,996	40,036	38,763
Others .....	1,013	881	1,001	1,049	826
World total .....	32,246	31,994	36,997	41,085	39,589

Country	1994/95	1995/96	1996/97	1997/98	1998/99
Principal importing countries:					
Netherlands .....	4,624	4,201	4,300	5,000	4,800
Japan .....	4,837	4,776	5,043	4,873	4,650
China, Peoples Republic of ..	155	795	2,274	2,940	3,850
Germany .....	2,963	3,209	3,481	3,406	3,650
Mexico .....	1,867	2,401	2,680	3,479	3,600
Spain .....	2,846	2,335	2,714	3,044	3,050
Taiwan .....	2,598	2,646	2,632	2,387	2,200
Korea, Republic of .....	1,384	1,422	1,486	1,340	1,450
Belgium-Luxembourg .....	1,365	1,224	1,136	1,279	1,200
Indonesia .....	619	718	684	810	1,150
United Kingdom .....	640	644	945	1,005	950
Italy .....	1,298	993	832	768	820
Thailand .....	115	426	550	600	750
Subtotal .....	25,311	25,790	28,757	30,931	32,120
Others .....	7,017	6,660	8,653	7,628	7,444
World total .....	32,328	32,450	37,410	38,559	39,564

<sup>1</sup> Marketing year beginning Aug. 1. <sup>2</sup> 480-pound net weight.  
 FAS, Cotton, Oilseeds, Tobacco and Seeds Division, (202) 720-9516. Prepared or estimated on the basis of official statistics of foreign governments, other foreign source materials, reports of U.S. Agricultural Counselors, Attaches, and Foreign Service Officers, results of office research, and related information.

**Table 3-38.—Sunflower: Area, yield, production, and value, United States, 1990–99<sup>1</sup>**

Year	Area planted	Area harvested	Yield per harvested acre	Production	Price per cwt.	Value of production
	<i>1,000 acres</i>	<i>1,000 acres</i>	<i>Pounds</i>	<i>1,000 pounds</i>	<i>Dollars</i>	<i>1,000 dollars</i>
1990 .....	1,905	1,851	1,229	2,274,405	10.80	245,754
1991 .....	2,746	2,673	1,352	3,613,030	8.69	316,847
1992 .....	2,187	2,043	1,255	2,564,985	9.74	250,748
1993 .....	2,757	2,486	1,035	2,572,063	12.90	326,432
1994 .....	3,567	3,430	1,410	4,835,825	10.70	512,747
1995 .....	3,478	3,368	1,190	4,009,332	11.50	457,573
1996 .....	2,536	2,479	1,436	3,559,343	11.70	414,842
1997 .....	2,888	2,792	1,317	3,676,952	11.60	426,766
1998 .....	3,568	3,492	1,510	5,273,162	10.60	536,971
1999 .....	3,553	3,441	1,262	4,341,862	7.50	353,472

<sup>1</sup> Prior to 1991 estimates included KS, MN, ND, and SD. Beginning in 1991 estimates include all States except AK and HI. NASS, Crops Branch, (202) 720–2127.

**Table 3-39.—Sunflower, Oil Varieties: Area, yield, production, and value, United States, 1990–99<sup>1</sup>**

Year	Area planted	Area harvested	Yield per harvested acre	Production	Price per cwt.	Value of production
	<i>1,000 acres</i>	<i>1,000 acres</i>	<i>Pounds</i>	<i>1,000 pounds</i>	<i>Dollars</i>	<i>1,000 dollars</i>
1990 .....	1,390	1,343	1,205	1,618,450	10.00	162,468
1991 .....	2,294	2,232	1,357	3,027,750	8.22	251,819
1992 .....	1,899	1,790	1,249	2,236,000	9.31	209,586
1993 .....	2,297	2,074	1,042	2,160,268	12.30	264,585
1994 .....	3,041	2,943	1,435	4,223,475	10.10	426,859
1995 .....	2,911	2,829	1,201	3,398,437	10.90	371,967
1996 .....	1,967	1,934	1,470	2,843,763	10.80	309,057
1997 .....	2,284	2,212	1,350	2,985,700	11.00	329,858
1998 .....	2,953	2,897	1,549	4,486,360	9.37	423,775
1999 .....	2,757	2,695	1,298	3,497,820	6.65	239,986

<sup>1</sup> Prior to 1991 estimates included KS, MN, ND, and SD. Beginning in 1991 estimates include all States except AK and HI. NASS, Corps Branch, (202) 720–2127.

**Table 3-40.—Sunflower, non-oil varieties: Area, yield, production, and value, United States, 1990–99<sup>1</sup>**

Year	Area planted	Area harvested	Yield per harvested acre	Production	Price per cwt.	Value of production
	<i>1,000 acres</i>	<i>1,000 acres</i>	<i>Pounds</i>	<i>1,000 pounds</i>	<i>Dollars</i>	<i>1,000 dollars</i>
1990 .....	515	508	1,291	655,955	12.70	83,286
1991 .....	452	441	1,327	585,280	11.10	65,028
1992 .....	288	253	1,300	328,985	13.00	41,162
1993 .....	460	412	1,000	411,795	15.20	61,847
1994 .....	526	487	1,257	612,350	13.80	85,888
1995 .....	567	539	1,133	610,895	14.10	85,606
1996 .....	569	545	1,313	715,580	13.80	105,785
1997 .....	604	580	1,192	691,252	14.30	96,908
1998 .....	615	595	1,322	786,802	14.60	113,196
1999 .....	796	746	1,131	844,042	13.90	113,486

<sup>1</sup> Prior to 1991 estimates included KS, MN, ND, and SD. Beginning in 1991 estimates include all States except AK and HI. NASS, Crops Branch, (202) 720–2127.

**Table 3-41.—Sunflower: Area, yield, production, and value, by States, 1998–99**

Variety and State	Area planted		Area harvested		Yield per harvested acre	
	1998	1999	1998	1999 <sup>1</sup>	1998	1999 <sup>1</sup>
	1,000 acres	1,000 acres	1,000 acres	1,000 acres	Pounds	Pounds
<b>Oil:</b>						
CO .....	115	175	107	172	1,400	1,350
KS .....	160	250	155	240	1,570	1,550
MN .....	90	80	87	77	1,350	1,450
NE .....	39	49	38	47	1,240	1,350
ND .....	1,600	1,250	1,580	1,220	1,540	1,150
SD .....	900	870	885	862	1,640	1,430
TX .....	12	25	11	24	600	900
Other States ....	37	58	34	53	1,101	1,156
US <sup>2</sup> .....	2,953	2,757	2,897	2,695	1,549	1,298
<b>Non-oil:</b>						
CO .....	45	95	43	93	1,150	1,250
KS .....	20	30	20	27	1,200	1,250
MN .....	40	50	38	43	1,250	1,200
NE .....	31	52	30	50	1,130	1,050
ND .....	390	450	380	425	1,420	1,090
SD .....	40	50	39	48	1,430	1,450
TX .....	35	50	33	43	700	900
Other States ....	14	19	12	17	1,124	1,082
US <sup>2</sup> .....	615	796	595	746	1,322	1,131
<b>Total:</b>						
CO .....	160	270	150	265	1,328	1,315
KS .....	180	280	175	267	1,528	1,520
MN .....	130	130	125	120	1,320	1,360
NE .....	70	101	68	97	1,191	1,195
ND .....	1,990	1,700	1,960	1,645	1,517	1,134
SD .....	940	920	924	910	1,631	1,431
TX .....	47	75	44	67	675	900
Other States ....	51	77	46	70	1,107	1,138
US <sup>2</sup> .....	3,568	3,553	3,492	3,441	1,510	1,262

Variety and State	Production		Marketing year average price per cwt.		Value of production	
	1998	1999 <sup>1</sup>	1998	1999 <sup>1</sup>	1998	1999 <sup>1</sup>
	1,000 pounds	1,000 pounds	Dollars	Dollars	1,000 dollars	1,000 dollars
<b>Oil:</b>						
CO .....	149,800	232,200	10.70	7.40	16,029	17,183
KS .....	243,350	372,000	9.47	6.25	23,045	23,250
MN .....	117,450	111,650	10.00	7.10	11,745	7,927
NE .....	47,120	63,450	9.50	7.50	4,476	4,759
ND .....	2,433,200	1,403,000	9.38	6.95	228,234	97,509
SD .....	1,451,400	1,232,660	9.31	6.50	135,125	80,123
TX .....	6,600	21,600	11.00	13.00	726	2,808
Other States ....	37,440	61,260	11.70	10.50	4,395	6,427
US <sup>2</sup> .....	4,486,360	3,497,820	9.37	6.65	423,775	239,986
<b>Non-oil:</b>						
CO .....	49,450	116,250	13.90	11.50	6,874	13,369
KS .....	24,000	33,750	14.90	14.00	3,576	4,725
MN .....	47,500	51,600	14.10	13.60	6,698	7,018
NE .....	33,900	52,500	13.60	11.80	4,610	6,195
ND .....	539,600	463,250	14.60	14.40	78,782	66,708
SD .....	55,770	69,600	14.30	10.80	7,975	7,517
TX .....	23,100	38,700	12.50	14.00	2,888	5,418
Other States ....	13,482	18,392	13.30	13.80	1,793	2,536
US <sup>2</sup> .....	786,802	844,042	14.60	13.90	113,196	113,486
<b>Total:</b>						
CO .....	199,250	348,450	11.50	8.80	22,903	30,552
KS .....	267,350	405,750	11.10	6.70	26,621	27,975
MN .....	164,950	163,250	12.20	10.30	18,443	14,945
NE .....	81,020	115,950	10.80	9.45	9,086	10,954
ND .....	2,972,800	1,866,250	10.90	8.50	307,016	164,217
SD .....	1,507,170	1,302,260	9.47	7.50	143,100	87,640
TX .....	29,700	60,300	12.10	13.60	3,614	8,226
Other States ....	50,922	79,652	12.20	11.30	6,188	8,936
US <sup>2</sup> .....	5,273,162	4,341,862	10.60	7.50	536,971	353,472

<sup>1</sup>Preliminary. <sup>2</sup>Estimates include all States except AK and HI.  
NASS, Crops Branch, (202) 720-2127.

**Table 3-42.—Sunflowerseeds: Area, yield and production in specified countries, 1996/97–1998/99<sup>1</sup>**

Continent and country	Area <sup>2</sup>			Yield per hectare			Production		
	1996/97	1997/98	1998/99 <sup>3</sup>	1996/97	1997/98	1998/99 <sup>3</sup>	1996/97	1997/98	1998/99 <sup>3</sup>
	1,000 hectares	1,000 hectares	1,000 hectares	Metric tons	Metric tons	Metric tons	1,000 metric tons	1,000 metric tons	1,000 metric tons
<b>North America:</b>									
Canada .....	36	50	69	1.56	1.30	1.59	56	65	110
Mexico .....	6	6	6	0.83	0.83	0.83	5	5	5
United States .....	1,003	1,130	1,413	1.61	1.48	1.69	1,614	1,668	2,392
Total .....	1,045	1,186	1,488	1.60	1.47	1.68	1,675	1,738	2,507
<b>South America:</b>									
Argentina .....	2,900	3,331	3,750	1.86	1.65	1.81	5,400	5,500	6,800
Brazil .....	60	60	60	0.50	0.50	0.50	30	30	30
Chile .....	2	2	2	1.50	1.50	1.50	3	3	3
Colombia .....	2	2	2	1.50	1.50	1.50	3	3	3
Paraguay .....	48	40	60	0.96	1.50	1.58	46	60	95
Uruguay .....	97	81	146	1.18	0.98	1.30	114	79	190
Venezuela .....	12	10	10	0.92	0.90	0.90	11	9	9
Total .....	3,121	3,526	4,030	1.80	1.61	1.77	5,607	5,684	7,130
<b>European Union:</b>									
Austria .....	19	20	24	2.32	2.20	2.58	44	44	62
France .....	915	895	805	2.19	2.17	2.09	2,000	1,940	1,680
Germany .....	44	34	34	2.34	2.50	2.50	103	85	85
Greece .....	15	26	25	2.60	2.00	2.00	39	52	50
Italy .....	263	304	311	1.99	1.67	1.31	523	509	408
Portugal .....	106	84	67	0.36	0.42	0.46	38	35	31
Spain .....	990	970	990	1.15	1.42	1.11	1,138	1,373	1,097
Total .....	2,352	2,333	2,256	1.65	1.73	1.51	3,885	4,038	3,413
<b>Eastern Europe:</b>									
Bulgaria .....	450	450	505	1.09	1.11	1.02	490	500	515
Czech Republic .....	20	11	19	1.90	2.09	2.00	38	23	38
Hungary .....	475	446	428	1.68	1.22	1.65	800	545	706
Romania .....	910	778	820	1.30	1.10	1.18	1,180	858	970
Slovakia .....	53	47	65	1.96	1.43	1.65	104	67	107
Yugoslavia .....	232	193	205	1.85	1.64	1.95	429	316	400
Total .....	2,140	1,925	2,042	1.42	1.20	1.34	3,041	2,309	2,736
<b>Frm. USSR (non-Baltics):</b>									
Russian Federation .....	3,894	3,583	4,100	0.71	0.79	0.73	2,765	2,831	3,000
Ukraine .....	2,025	2,000	2,400	1.05	1.15	0.94	2,123	2,308	2,266
Total <sup>4</sup> .....	6,447	5,961	6,912	0.82	0.90	0.80	5,280	5,380	5,551
<b>Africa:</b>									
Egypt .....	21	11	3	2.19	2.27	2.33	46	25	7
Ethiopia .....	60	60	60	0.37	0.37	0.37	22	22	22
Kenya .....	9	9	9	0.67	0.67	0.67	6	6	6
Morocco .....	96	100	100	1.16	0.70	0.50	111	70	50
Mozambique .....	25	26	25	0.56	0.58	0.56	14	15	14
South Africa, Republic of .....	464	511	828	0.97	1.10	1.33	450	562	1,100
Tanzania, United Republic of .....	82	83	82	0.39	0.40	0.39	32	33	32
Zambia .....	20	19	35	0.40	0.37	0.51	8	7	18
Zimbabwe .....	62	58	28	0.55	0.38	0.61	34	22	17
Total .....	845	883	1,175	0.86	0.87	1.08	726	765	1,269
<b>Asia and the Middle East:</b>									
Burma .....	221	122	122	0.73	0.75	0.75	161	92	92
China, Peoples Republic of .....	690	716	720	1.92	1.64	1.29	1,325	1,176	930
India .....	1,995	2,100	2,200	0.66	0.55	0.55	1,315	1,150	1,200
Iran .....	59	55	55	0.85	0.84	0.84	50	46	46
Iraq .....	12	12	12	1.25	1.25	1.25	15	15	15
Israel .....	10	10	7	1.80	1.50	1.43	18	15	10
Pakistan .....	86	96	99	1.28	1.30	1.31	110	125	130
Syria .....	4	3	3	1.50	1.67	1.67	6	5	5
Turkey .....	540	520	520	1.01	1.25	1.25	545	650	650
Total .....	3,617	3,634	3,738	0.98	0.90	0.82	3,545	3,274	3,078
<b>Oceania:</b>									
Australia .....	137	92	167	1.21	1.07	1.25	166	98	209
<b>World total<sup>4</sup> .....</b>	<b>19,704</b>	<b>19,540</b>	<b>21,808</b>	<b>1.21</b>	<b>1.19</b>	<b>1.19</b>	<b>23,925</b>	<b>23,286</b>	<b>25,893</b>

<sup>1</sup> Split year includes Northern Hemisphere crop harvested in the late months of the first year shown combined with Southern Hemisphere and certain Northern Hemisphere crops harvested in the early months of the following year. <sup>2</sup> Harvested area as far as possible. <sup>3</sup> Preliminary. <sup>4</sup> Regional totals include other countries not shown. World total for all countries in USDA data base.

FAS, Production Estimates and Crop Assessment Division, (202) 720-0888. Prepared or estimated on the basis of official statistics of foreign governments, other foreign source materials, reports of U.S. Agricultural Counselors, Attaches, and Foreign Service Officers, results of office research, and related information.

**Table 3-43.—Peppermint oil: Area, yield, production, and value, United States, 1990–99**

Year	Area harvested	Yield per harvested acre	Production	Price per pound	Value of production
	<i>1,000 acres</i>	<i>Pounds</i>	<i>1,000 pounds</i>	<i>Dollars</i>	<i>1,000 dollars</i>
1990 .....	101.8	68	6,953	13.90	96,621
1991 .....	113.7	58	6,561	13.30	87,422
1992 .....	111.6	66	7,383	12.80	94,723
1993 .....	98.3	61	6,027	13.30	80,139
1994 .....	108.5	69	7,459	14.60	109,255
1995 .....	135.3	70	9,449	13.80	130,048
1996 .....	132.0	72	9,446	13.60	128,778
1997 .....	135.6	74	9,971	12.90	128,846
1998 .....	124.0	78	9,727	11.90	116,037
1999 <sup>1</sup> .....	106.3	71	7,537	11.10	83,790

<sup>1</sup> Preliminary.  
NASS, Crops Branch (202), 720–2127.

**Table 3-44.—Spearmint oil: Area, yield, production, and value, United States, 1990–99**

Year	Area harvested	Yield per harvested acre	Production	Price per pound	Value of production
	<i>1,000 acres</i>	<i>Pounds</i>	<i>1,000 pounds</i>	<i>Dollars</i>	<i>1,000 dollars</i>
1990 .....	33.7	76	2,565	14.90	38,188
1991 .....	42.4	73	3,108	13.90	43,120
1992 .....	41.1	89	3,640	12.80	46,645
1993 .....	32.5	84	2,722	12.30	33,488
1994 .....	28.4	78	2,213	12.50	27,592
1995 .....	28.8	79	2,274	12.30	27,858
1996 .....	23.1	94	2,167	12.00	26,094
1997 .....	25.5	96	2,441	11.90	29,128
1998 <sup>1</sup> .....	27.4	109	2,987	11.00	32,731
1999 <sup>1</sup> .....	24.4	101	2,454	9.80	24,113

<sup>1</sup> Preliminary.  
NASS, Crops Branch, (202) 720–2127.

**Table 3-45.—Mint oil: Production and value, by States, 1997–99**

State	Production			Price per pound			Value of production		
	1997	1998	1999 <sup>1</sup>	1997	1998	1999 <sup>1</sup>	1997	1998	1999 <sup>1</sup>
	<i>1,000 pounds</i>	<i>1,000 pounds</i>	<i>1,000 pounds</i>	<i>Dol-lars</i>	<i>Dol-lars</i>	<i>Dol-lars</i>	<i>1,000 dollars</i>	<i>1,000 dollars</i>	<i>1,000 dollars</i>
<b>Peppermint:</b>									
ID .....	2,160	1,995	1,494	11.20	10.30	10.40	24,192	20,549	15,538
IN .....	1,050	1,104	686	13.60	12.70	11.60	14,280	14,021	7,958
OR .....	3,504	3,318	2,760	15.30	13.70	13.00	53,611	45,457	35,880
WA .....	2,945	2,910	2,250	11.00	11.00	9.00	32,395	32,010	20,250
WI .....	312	400	347	14.00	10.00	12.00	4,368	4,000	4,164
US .....	9,971	9,727	7,537	12.90	11.90	11.10	128,846	116,037	83,790
<b>Spearmint:</b>									
ID .....	170	206	171	12.40	11.60	10.00	2,108	2,390	1,710
IN .....	93	110	86	12.00	12.00	10.70	1,116	1,320	920
MI .....	51	71	68	11.00	11.20	10.00	561	795	680
OR .....	158	219	150	13.00	12.00	10.80	2,054	2,628	1,620
WA .....	1,782	2,142	1,788	11.60	10.50	9.50	20,671	22,491	16,986
WI .....	187	239	191	14.00	13.00	11.50	2,618	3,107	2,197
US .....	2,441	2,987	2,454	11.90	11.00	9.80	29,128	32,731	24,113

<sup>1</sup> Preliminary.  
NASS, Crops Branch, (202) 720–2127.

**Table 3-46.—Olive oil: World production, 1995–97<sup>1 2</sup>**

Continent and country	1995	1996	1997 <sup>3</sup>	Continent and country	1995	1996	1997 <sup>3</sup>
	<i>1,000 metric tons</i>	<i>1,000 metric tons</i>	<i>1,000 metric tons</i>		<i>1,000 metric tons</i>	<i>1,000 metric tons</i>	<i>1,000 metric tons</i>
Europe:							
France .....	2	2	2				
Greece .....	300	210	360				
Italy .....	578	420	500				
Portugal .....	40	36	32				
Spain .....	1,077	745	750				
Total <sup>4</sup> .....	1,997	1,413	1,644				
Middle East:							
Israel .....	20	20	20				
Jordan .....	15	15	15				
Lebanon .....	8	8	8				
Syria .....	75	125	100				
Turkey .....	50	200	60				
Total <sup>4</sup> .....	170	370	205				
				Africa:			
				Algeria .....	10	20	20
				Morocco .....	17	17	17
				Tunisia .....	90	190	220
				Libya .....	5	5	5
				Total <sup>4</sup> .....	150	260	290
				Argentina .....	13	15	15
				World total <sup>4</sup> .....	2,337	2,065	2,161

<sup>1</sup>Marketing year begins November 1. <sup>2</sup>Production excludes residue oil. <sup>3</sup>Preliminary. <sup>4</sup>Includes other countries not listed separately.

FAS, Cotton, Oilseeds, Tobacco and Seeds Division, (202) 720-5710. Prepared or estimated on the basis of official statistics of foreign governments, other foreign source materials, reports of U.S. Agricultural Counselors, AttacheAE1s, and Foreign Service Officers, results of office research, and related information.

**Table 3-47.—Margarine, actual weight: Supply and disposition, United States, 1989–98**

Year	Supply			Disposition		
	Production	Stocks, Jan. 1	Total supply	Exports	Domestic disappearance	
					Total	Per capita
	<i>Million pounds</i>	<i>Million pounds</i>	<i>Million pounds</i>	<i>Million pounds</i>	<i>Pounds</i>	
1989 .....	2,531	62	2,594	20	2,533	10.2
1990 .....	2,768	61	2,830	22	2,738	10.9
1991 .....	2,698	92	2,791	28	2,700	10.6
1992 .....	2,818	91	2,910	31	2,835	11.0
1993 .....	2,892	75	2,969	33	2,902	11.1
1994 .....	2,623	66	2,693	38	2,631	9.9
1995 .....	2,490	62	2,557	77	2,498	9.2
1996 .....	2,480	58	2,544	47	2,500	9.2
1997 .....	2,367	44	2,417	71	2,373	8.6
1998 <sup>1</sup> .....	2,311	44	2,363	36	2,329	8.5

<sup>1</sup>Preliminary.

ERS, Field Crops Branch. (202) 694-5300. Totals and per capita estimates computed from unrounded numbers.

**Table 3-48.—Margarine: Selected reported fats and oils used in manufacture, United States, 1989–98**

Year	Vegetable oils			Animal fats <sup>1</sup>	Total <sup>2</sup>
	Soybean oil	Cottonseed oil	Corn oil		
	<i>Million pounds</i>	<i>Million pounds</i>	<i>Million pounds</i>	<i>Million pounds</i>	<i>Million pounds</i>
1989 .....	1,573	NA	214	32	1,875
1990 .....	1,749	NA	208	35	2,102
1991 .....	1,853	25	196	43	2,160
1992 .....	1,926	24	176	37	2,174
1993 .....	2,013	26	161	31	2,239
1994 .....	1,793	NA	NA	42	2,003
1995 .....	1,684	NA	NA	41	1,847
1996 .....	1,694	NA	77	28	1,816
1997 .....	1,650	NA	61	14	1,733
1998 .....	1,606	NA	55	22	1,692

<sup>1</sup>Lard and edible tallow. <sup>2</sup>Includes small quantities of nuts, coconut, palm, and sunflower oil. NA-not available.

ERS, Field Crops Branch, (202) 694-5300. Compiled from reports of the U.S. Department of Commerce. Totals computed from unrounded numbers.



**Table 3-49.—Shortening: Supply and disposition, United States, 1989–98**

Year	Supply			Disposition		
	Factory and warehouse stocks, Jan. 1	Production	Total supply	Exports and shipments	Domestic disappearance	
					Total	Per capita
	<i>Million pounds</i>	<i>Million pounds</i>	<i>Million pounds</i>	<i>Million pounds</i>	<i>Million pounds</i>	<i>Pounds</i>
1989 .....	145	5,315	5,460	32	5,309	21.5
1990 .....	119	5,590	5,709	34	5,559	22.2
1991 .....	116	5,724	5,840	43	5,650	22.4
1992 .....	147	5,719	5,866	43	5,722	22.4
1993 .....	102	6,524	6,625	44	6,487	25.1
1994 .....	94	6,334	6,429	46	6,293	24.2
1995 .....	90	5,975	6,065	45	5,914	22.5
1996 .....	106	5,929	6,035	43	5,911	22.3
1997 .....	81	5,656	5,737	42	5,604	20.9
1998 <sup>1</sup> .....	91	5,724	5,815	45	5,042	21.0

<sup>1</sup> Preliminary.

ERS, Market and Trade Economics Division, Field Crops Branch, (202) 694-5300. Compiled from reports of the Commerce and Agriculture Departments.

**Table 3-50.—Shortening: Fats and oils used in manufacture, United States, 1989–98**

Year	Vegetable oils				Animal fats		Total primary and secondary fats and oils <sup>1</sup>
	Cottonseed oil	Soybean oil	Coconut oil	Palm oil	Lard	Edible tallow	
1989 .....	192	3,509	92	139	295	752	5,338
1990 .....	252	4,004	( <sup>2</sup> )	( <sup>2</sup> )	264	637	5,684
1991 .....	260	4,152	( <sup>2</sup> )	( <sup>2</sup> )	274	462	5,767
1992 .....	241	4,140	( <sup>2</sup> )	( <sup>2</sup> )	310	427	5,761
1993 .....	266	4,951	( <sup>2</sup> )	( <sup>2</sup> )	296	404	6,544
1994 .....	216	4,929	( <sup>2</sup> )	( <sup>2</sup> )	287	405	6,365
1995 .....	212	4,673	( <sup>2</sup> )	( <sup>2</sup> )	325	374	6,031
1996 .....	237	4,690	( <sup>2</sup> )	( <sup>2</sup> )	284	320	5,935
1997 .....	256	4,517	( <sup>2</sup> )	( <sup>2</sup> )	272	312	5,679
1998 .....	200	4,748	( <sup>2</sup> )	( <sup>2</sup> )	280	259	5,749

<sup>1</sup> Includes small quantities of corn, peanut, safflower, and sunflower oil. <sup>2</sup> Not included to avoid disclosure.

ERS, Market and Trade Economics Division, Field Crops Branch, (202) 694-5300. Compiled from reports of the U.S. Department of Commerce. Totals computed from unrounded numbers.

**Table 3-51.—Inedible tallow and grease: Supply and disposition, United States, and price per pound at Chicago, 1989–98**

Year	Supply				Disposition			Price of inedible tallow No. 1 at Chicago, per pound
	Stocks Jan. 1	Production	Total	Exports	Factory consumption			
					Total	Use in soap	Use in feed	
	<i>Million pounds</i>	<i>Million pounds</i>	<i>Million pounds</i>	<i>Million pounds</i>	<i>Million pounds</i>	<i>Million pounds</i>	<i>Cents</i>	
1989 .....	399	5,848	6,247	2,679	3,194	368	1,919	14.4
1990 .....	374	5,217	6,097	2,267	3,061	402	2,000	13.7
1991 .....	357	5,759	6,116	1,936	2,949	392	1,748	13.3
1992 .....	349	5,768	6,117	2,279	3,050	334	1,954	14.4
1993 .....	309	6,621	6,930	2,117	3,018	300	1,995	14.9
1994 .....	320	6,712	7,032	2,167	3,190	301	2,102	17.4
1995 .....	348	6,745	7,093	2,663	3,223	264	2,166	19.2
1996 .....	373	6,376	6,749	1,993	3,289	245	2,253	21.7
1997 .....	262	6,249	6,511	1,685	3,399	245	2,401	20.7
1998 .....	260	5,982	6,615	1,660	3,139	250	2,302	18.5

ERS, Market and Trade Economics Division, Field Crops Branch, (202) 694-5300.

**Table 3-52.—Fats, oils, and oilseeds (fat or oil equivalent): World production, 1995–96/1998–99**

Commodity	World production <sup>1</sup>			
	1995–96	1996–97	1997–98	1998–99 <sup>2</sup>
	1,000 metric tons	1,000 metric tons	1,000 metric tons	1,000 metric tons
<b>Edible vegetable oils:</b>				
Cottonseed .....	3,871	3,797	3,614	3,740
Olive <sup>3</sup> .....	2,481	2,337	2,065	2,161
Peanut .....	4,504	4,172	4,434	4,159
Rapeseed .....	10,841	11,240	12,139	14,020
Soybean .....	20,345	23,856	23,886	23,770
Sunflower .....	8,620	8,330	9,120	9,647
<b>Total .....</b>	<b>50,662</b>	<b>53,732</b>	<b>55,258</b>	<b>57,497</b>
<b>Palm oils:</b>				
Coconut .....	3,720	3,412	2,880	3,355
Palm .....	17,727	17,070	19,321	20,600
Palm kernel .....	2,255	2,282	2,486	2,613
<b>Total .....</b>	<b>23,702</b>	<b>22,764</b>	<b>24,687</b>	<b>26,568</b>
<b>Animal fats:</b>				
Butter (fat content) .....	5,135	5,142	5,289	5,468
Tallow and grease .....	8,184	8,025	8,403	8,544
<b>Total .....</b>	<b>13,319</b>	<b>13,167</b>	<b>13,692</b>	<b>14,012</b>
<b>Marine oils:</b>				
Fish .....	1,196	864	1,106	1,176
<b>Grand total <sup>5</sup> .....</b>	<b>88,879</b>	<b>90,527</b>	<b>94,743</b>	<b>99,253</b>

<sup>1</sup> Split year includes Northern Hemisphere crop harvested in the late months of the first year shown combined with Southern Hemisphere and certain Northern Hemisphere crops harvested in the early months of the following year. <sup>2</sup> Preliminary. <sup>3</sup> Excludes olive residue oil. <sup>4</sup> FAS no longer maintains linseed oil production data. <sup>5</sup> Excludes linseed oil.

FAS, Cotton, Oilseeds, Tobacco and Seeds Division, (202) 720-5710. Prepared or estimated on the basis of official statistics of foreign governments, other foreign source materials, reports of U.S. Agricultural Counselors, Attaches, and Foreign Service Officers, results of office research, and related information.

**Table 3-53.—Fats, oils, oilseeds, and oilseed cake and meal: Exports of selected items, United States, 1989–98**

Year beginning January	Lard	Inedible animal tallow, greases, and oils <sup>1</sup>	Oilseeds					Oilseed cake and meal	
			Cottonseed	Flaxseed	Peanuts unshelled	Peanuts shelled	Soybeans	Soybean	Other <sup>4</sup>
	Metric tons	Metric tons	Metric tons	Metric tons	Metric tons	Metric tons	Metric tons	Metric tons	Metric tons
1989 .....	50,074	1,307,551	34,554	24,261	50,557	240,334	15,042,853		
1990 .....	39,644	1,121,120	44,855	27,878	58,941	262,763	15,351,220		
1991 .....	54,705	1,137,383	78,872	17,705	67,706	198,442	17,530,932		
1992 .....	61,811	1,362,824	196,408	5,091	63,702	319,677	19,794,760		
1993 .....	51,903	1,279,276	126,449	3,421	56,378	216,254	19,423,490		
1994 .....	62,122	1,343,096	188,321	3,387	33,244	169,221	18,080,877		
1995 .....	56,260	1,616,550	147,600	2,317	44,529	285,530	22,757,454		
1996 .....	45,690	1,192,335	83,078	2,890	30,005	208,733	25,565,559		
1997 .....	53,729	1,032,246	114,804	5,319	41,245	225,640	26,206,065		
1998 <sup>2</sup> .....	59,623	1,376,961	127,332	10,987	27,718	182,215	20,275,536		
Year beginning January	Vegetable oils							Oilseed cake and meal	
	Cocoa butter	Coconut oil	Cottonseed oil <sup>3</sup>	Linseed oil	Mar-garine	Peanut oil	Soybean oil <sup>3</sup>	Soybean	Other <sup>4</sup>
	Metric tons	Metric tons	Metric tons	Metric tons	Metric tons	Metric tons	Metric tons	Metric tons	Metric tons
1989 .....	2,026	20,432	209,316	6,767	3,230	6,810	70,447	4,728,411	130,056
1990 .....	4,049	18,218	145,949	3,027	3,142	7,257	536,460	4,820,163	268,308
1991 .....	2,426	21,132	97,034	4,470	4,220	23,403	442,245	5,534,376	652,877
1992 .....	2,821	9,449	123,293	3,942	5,928	64,697	764,845	6,236,001	781,272
1993 .....	4,340	6,363	83,075	3,799	6,978	23,984	691,343	5,533,646	810,046
1994 .....	2,139	8,495	135,639	5,373	9,350	27,027	824,169	4,850,754	555,557
1995 .....	2,972	9,090	137,693	15,422	17,080	47,741	1,037,306	5,858,626	511,125
1996 .....	2,862	3,987	96,014	14,925	13,015	37,300	571,209	5,861,575	195,306
1997 .....	3,886	5,170	110,575	34,691	13,210	8,818	1,015,356	6,992,801	187,401
1998 <sup>2</sup> .....	5,606	3,801	86,270	29,237	14,368	4,261	1,426,951	8,029,267	168,264

<sup>1</sup> Includes edible and inedible tallow, choice white grease, wool grease, yellow grease, edible and inedible oleo and oleo stearine, and animal oils, fats and oils, n.e.c. <sup>2</sup> Preliminary. <sup>3</sup> Includes shipments under PL480. <sup>4</sup> Includes corn meal.

FAS, Cotton, Oilseeds, Tobacco and Seeds Division, (202) 720-5710. Compiled from reports of the U.S. Department of Commerce.

**Table 3-54.—Oilseeds, oils, and oilseed cake and meal: Imports of selected items, United States, 1989–98**

Year beginning January	Oilseeds					
	Castor beans	Copra	Flaxseed	Peanuts unshelled	Peanuts shelled <sup>1</sup>	Poppy seed
	<i>Metric tons</i>	<i>Metric tons</i>	<i>Metric tons</i>	<i>Metric tons</i>	<i>Metric tons</i>	<i>Metric tons</i>
1989 .....	0	933	109,418	356	577	3,693
1990 .....	42	486	171,664	116	834	4,160
1991 .....	28	816	203,008	0	1,140	3,355
1992 .....	1	291	126,565	48	9,948	4,989
1993 .....	417	396	110,655	0	651	5,162
1994 .....	5	1,515	143,079	2,633	1,296	5,618
1995 .....	0	1,387	186,153	1,628	32,901	6,122
1996 .....	2	1,023	202,313	2,986	38,051	6,243
1997 .....	0	1,170	223,519	3,176	40,841	5,238
1998 <sup>2</sup> .....	0	1,367	171,093	2,686	46,792	5,865

Year beginning January	Oilseeds—continued			Vegetable oils			
	Rapeseed	Sesame seed	Soybeans	Cocoa butter	Castor oil	Coconut oil	Linseed oil
	<i>Metric tons</i>	<i>Metric tons</i>	<i>Metric tons</i>	<i>Metric tons</i>	<i>Metric tons</i>	<i>Metric tons</i>	<i>Metric tons</i>
1989 .....	77,752	40,514	89,713	64,353	37,874	391,903	4
1990 .....	102,241	42,879	63,583	92,165	31,032	452,224	7
1991 .....	1,075	36,460	121,476	93,169	34,524	390,997	95
1992 .....	1,543	34,993	69,519	99,512	34,017	501,466	351
1993 .....	162,093	36,924	97,360	83,399	42,215	443,496	160
1994 .....	409,500	40,516	179,270	54,547	44,093	441,330	426
1995 .....	200,054	39,356	130,141	57,158	41,417	491,151	1,744
1996 .....	261,348	46,561	86,981	68,762	39,938	423,189	2,699
1997 .....	318,249	42,629	258,602	87,689	41,005	584,192	3,102
1998 <sup>2</sup> .....	350,469	47,437	148,780	65,307	48,477	587,062	4,306

Year beginning January	Vegetable oils—continued						Total oilseed cake and meal
	Olive oil	Palm oil	Palm kernel oil	Peanut oil	Rapeseed oil	Tung oil	
	<i>Metric tons</i>	<i>Metric tons</i>	<i>Metric tons</i>	<i>Metric tons</i>	<i>Metric tons</i>	<i>Metric tons</i>	<i>Metric tons</i>
1989 .....	80,833	112,201	151,282	391	194,557	6,474	333,036
1990 .....	97,273	131,161	154,327	3,368	213,956	4,045	313,220
1991 .....	98,709	113,527	145,715	1,697	307,127	5,645	505,996
1992 .....	114,271	102,211	167,512	495	381,456	4,996	605,734
1993 .....	121,233	129,371	119,073	200	395,310	4,270	692,255
1994 .....	126,024	160,175	141,372	5,281	425,466	5,401	783,438
1995 .....	122,270	101,621	121,949	3,165	430,648	4,427	831,047
1996 .....	112,742	125,368	148,719	1,639	522,152	3,943	999,513
1997 .....	163,463	134,519	161,706	6,648	491,083	6,265	1,071,926
1998 <sup>2</sup> .....	164,972	115,871	149,305	30,336	499,574	3,879	1,293,373

<sup>1</sup> Includes blanched or roasted peanuts. <sup>2</sup> Preliminary.  
 FAS, Cotton, Oilseeds, Tobacco and Seeds Division, (202) 720-5710. Compiled from reports of the U.S. Department of Commerce.

**Table 3-55.—Animal tallow, greases, and oils<sup>1</sup>: United States exports by region and country of destination 1997–99**

Continent and country	1997	1998	1999 <sup>2</sup>	Continent and country	1997	1998	1999 <sup>2</sup>
	<i>Metric tons</i>	<i>Metric tons</i>	<i>Metric tons</i>		<i>Metric tons</i>	<i>Metric tons</i>	<i>Metric tons</i>
North and Central America:				Former Soviet Union .....	1,493	8,132	28,305
Canada .....	58,966	61,987	65,075	North Africa and Middle East:			
El Salvador .....	32,316	37,850	44,700	Algeria .....	15,811	36,699	0
Guatemala .....	34,494	55,083	69,235	Egypt .....	16,951	23,395	20,817
Honduras .....	15,251	22,979	25,881	Morocco .....	12,680	10,470	16,551
Mexico .....	272,974	348,264	274,788	Turkey .....	141,149	125,076	96,640
Nicaragua .....	10,925	10,940	10,533	United Arab Emir.	169	138	161
Other countries ..	6,484	16,699	16,583	Other countries ..	7,076	15,923	33,849
Total .....	431,410	553,802	506,795	Total .....	193,836	211,701	168,019
Brazil .....	298	10,566	348	Other Africa:			
Colombia .....	37,989	61,081	66,708	Ghana .....	0	2,000	0
Ecuador .....	2,192	3,711	103	Nigeria .....	4,000	7,298	23,804
Venezuela .....	61,824	57,655	46,272	Senegal .....	7,000	17,900	2,649
Other countries ..	3,721	53,425	4,708	Other countries ..	6,009	15,006	10,077
Total .....	106,024	186,438	118,139	Total .....	17,009	42,204	36,531
European Community:				Asia:			
Italy .....	7,913	3,852	8,369	Japan .....	39,494	36,763	40,379
Netherlands .....	44,446	42,839	24,852	Korea .....	33,372	57,010	120,512
Spain .....	24,168	52,613	37,899	Taiwan .....	3,632	16,091	23,577
Other countries ..	41,482	29,552	23,369	Other countries ..	13,303	25,303	59,681
Total .....	118,009	128,856	94,489	Total .....	89,801	135,167	244,149
Other Europe:				Oceania .....	179	96	95
Poland .....	75	18	0	Other regions .....	61,619	93,832	79,040
Romania .....	72	2,171	28	Grand total <sup>3</sup> .....	1,019,567	1,362,457	1,275,727
Other countries ..	115	58	137				
Total .....	262	2,247	165				

<sup>1</sup> This category includes edible tallow; inedible tallow; choice white grease; pig and poultry fat, yellow grease; sheep or goat, other fat, raw or rendered; lard stearin, lard oil, oleo-oil and tallow oil; other animal fat, and baking and frying fat. <sup>2</sup> Preliminary. <sup>3</sup> May not add due to rounding.

FAS, Dairy, Livestock and Poultry Division, (202) 720-8031. Bureau of the Census, U.S. Department of Commerce.

**Table 3-56.—Fats and oils: Index numbers of wholesale prices, leading markets, United States, 1991–98**  
[1982=100]

Year	All fats and oils excluding butter	Seventeen major fats and oils								
		All fats and oils	Classified by origin		Classified by use					
			Animal	Vegetable	Edible			Industrial		
					Domes-tic origin	Butter	Lard	All edible	Soap fats	Drying oils
1991 .....	69.3	53.9	53.6	112.9	NA	104.6	58.0	87.5	99.6	86.5
1992 .....	67.9	51.3	50.8	131.1	NA	102.5	53.8	95.0	89.3	91.9
1993 .....	74.5	54.4	50.2	147.3	NA	116.8	57.1	97.9	94.3	94.9
1994 .....	88.9	61.5	53.0	179.3	NA	128.1	65.7	112.9	93.1	107.4
1995 .....	91.9	115.5	59.6	174.4	NA	151.1	66.1	242.8	92.9	124.0
1996 .....	87.8	655.3	68.1	159.3	NA	162.5	67.1	1,346.9	10.8	129.0
1997 .....	90.2	67.8	74.2	156.8	NA	157.1	67.6	150.2	11.0	141.4
1998 .....	94.3	78.4	88.5	174.3	NA	146.4	84.5	143.6	10.8	135.1

NA-not available.

ERS, Market and Trade Economics Division, Field Crops Branch, (202) 694-5300.

**Table 3-57.—Fats and oils: Use in products for civilian consumption, total and per capita, United States, 1989–98**

Calendar year	Food products <sup>1</sup>													
	Butter (actual weight)		Lard and tallow (direct use) <sup>2</sup>		Margarine (actual weight)		Baking and frying fats (shortening)		Salad and cooking oils		Other edible use		All food products (fat content)	
	Total	Per capita	Total	Per capita	Total	Per capita	Total	Per capita	Total	Per capita	Total	Per capita	Total	Per capita
	Million lbs	Lbs	Million lbs	Lbs	Million lbs	Lbs	Million lbs	Lbs	Million lbs	Lbs	Million lbs	Lbs	Million lbs	Lbs
1989 .....	1,077	4.4	515	2.1	2,512	10.2	5,309	21.5	5,940	24.0	313	1.3	15,675	63.5
1990 .....	1,095	4.4	609	2.4	2,714	10.9	5,559	22.2	6,040	24.2	291	1.2	16,335	65.5
1991 .....	1,100	4.4	794	3.1	2,671	10.6	5,650	22.4	6,743	26.7	321	1.3	17,294	68.6
1992 .....	1,114	4.4	1,036	4.1	2,802	11.0	5,722	22.4	6,946	27.2	367	1.4	17,998	70.5
1993 .....	1,209	4.7	1,007	3.9	2,868	11.1	6,487	25.1	6,907	26.8	451	1.8	18,792	72.8
1994 .....	1,255	4.8	1,237	4.8	2,593	9.9	6,292	24.2	6,845	26.3	426	1.6	18,661	71.6
1995 .....	1,186	4.5	1,301	4.9	2,421	9.2	5,926	22.5	7,057	26.8	434	1.6	18,112	68.9
1996 .....	1,148	4.3	1,398	5.2	2,453	9.2	5,914	22.3	6,924	26.1	361	1.4	18,008	67.9
1997 .....	1,114	4.2	1,264	4.7	2,302	8.6	5,606	20.9	7,652	28.6	297	1.1	18,171	67.9
1998 <sup>3</sup> .....	1,119	4.2	1,380	5.5	2,293	8.5	5,670	21.0	7,532	27.8	365	1.3	18,501	66.1

Calendar year	Industrial products											
	Soap		Fatty acids		Animal feeds		Other inedible products		All inedible products <sup>4</sup>		All products <sup>5</sup>	
	Total	Per capita	Total	Per capita	Total	Per capita	Total	Per capita	Total	Per capita	Total	Per capita
	Million pounds	Pounds	Million pounds	Pounds	Million pounds	Pounds	Million pounds	Pounds	Million pounds	Pounds	Million pounds	Pounds
1989 .....	749	3.0	2,057	8.3	2,083	8.4	444	1.8	5,848	23.7	20,977	84.9
1990 .....	799	3.2	1,981	7.9	2,203	8.8	296	1.2	5,741	23.0	21,312	86.1
1991 .....	833	3.3	2,235	8.8	1,974	7.8	286	1.1	5,719	22.6	21,813	86.3
1992 .....	739	2.9	2,041	8.0	2,177	8.5	549	2.1	5,904	23.1	22,687	88.8
1993 .....	749	2.9	1,898	7.3	2,200	8.5	589	2.3	5,846	22.6	23,529	91.1
1994 .....	687	3.0	1,959	8.8	2,340	8.7	654	2.9	6,103	25.2	20,392	91.5
1995 .....	594	2.8	1,964	8.6	2,341	8.8	747	2.5	6,101	23.0	29,201	113.1
1996 .....	469	1.8	1,921	7.2	2,430	9.1	782	2.9	6,018	22.7	27,344	103.0
1997 <sup>3</sup> .....	567	2.1	2,342	8.7	2,646	9.9	557	2.1	6,535	24.4	30,985	115.7
1998 .....	561	2.0	2,187	7.5	2,878	8.1	578	2.1	6,573	23.2	28,554	110.2

<sup>1</sup> Domestic disappearance data are computed by ERS. <sup>2</sup> Includes edible tallow direct use beginning in 1979. <sup>3</sup> Preliminary. <sup>4</sup> Including paint, varnish, resin, plastic, and lubricants. <sup>5</sup> Including only fat content of butter and margarine.

ERS, Market and Trade Economics Division, Field Crops Branch, (202) 694-5300.

**Table 3-58.—Fats and oils: Wholesale price per pound, 1994–99 <sup>1</sup>**

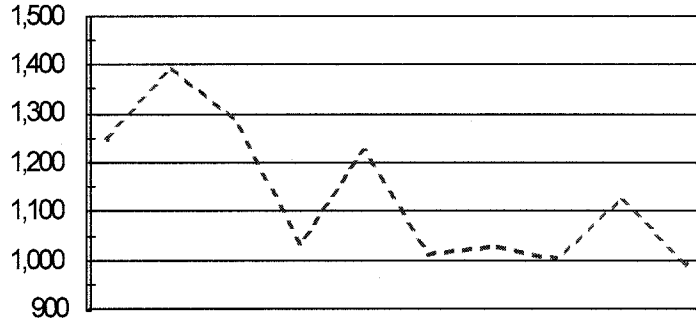
Item and market	1994	1995	1996	1997	1998	1999
	Cents	Cents	Cents	Cents	Cents	Cents
Castor oil, No. 1, Brazilian, tanks, imported, New York	44.1	45.0	41.70	41.50	41.50	48.00
Coconut oil, crude, tanks, f.o.b. New York	30.4	36.0	42.62	39.40	31.17	39.89
Corn oil, crude, tank cars, f.o.b. Decatur	27.3	26.6	26.50	24.85	30.33	23.31
Cottonseed oil, crude, tank cars, f.o.b. Valley	27.1	26.8	25.90	26.51	31.03	23.95
Linseed oil, raw, tank cars, Minneapolis	32.5	35.0	37.10	36.25	36.00	36.00
Palm oil, U.S. ports, refined	28.1	33.0	26.60	27.25	31.88	22.86
Rapeseed oil, refined (denatured), tanks, New York	53.8	52.0	58.10	88.00	90.00	80.00
Safflower oil, tanks, New York	59.0	59.0	59.00	59.00	59.00	59.00
Soybean oil, crude, tank cars, f.o.b. Decatur	27.9	26.8	23.80	23.27	25.73	17.72
Sunflower oil, crude, Minneapolis	31.1	28.9	24.66	23.45	24.24	19.09
Tallow, inedible, number delivered Chicago	17.4	19.2	20.10	20.75	17.67	12.99
Tung oil, imported, drums, f.o.b. New York	76.1	59.0	63.30	101.50	100.00	84.83

<sup>1</sup> All prices are calendar year basis.

ERS, Market and Trade Economics Division, Field Crops Branch, (202) 694-5300. Compiled from the Chemical Marketing Reporter, the National Provisioner, the Wall Street Journal, and the U.S. Department of Labor.

### Peanuts: Value of Production, 1990-99

Million Dollars



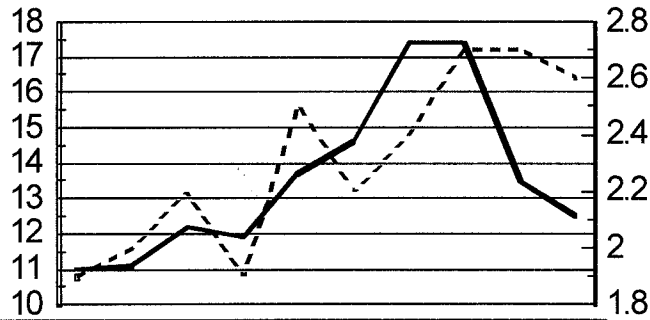
Year	90	91	92	93	94	95	96	97	98	99
Value of Prod.	1,250	1,392	1,285	1,031	1,229	1,013	1,030	1,003	1,126	992

NASS Table 3-16

### Soybeans: Production & Value of Production 1990-99

Billion Dollars

Million Bu.



Year	90	91	92	93	94	95	96	97	98	99
Production	1.9	2.0	2.2	1.9	2.5	2.2	2.4	2.7	2.7	2.6
Value of Prod.	11.0	11.1	12.2	11.9	13.7	14.6	17.4	17.4	13.5	12.5

NASS Table 3-27