

***“CORPORATE CAMPAIGN  
FOR MIGRATORY BIRD  
CONSERVATION”***

***[www.wildlifehc.org/migratorybirds](http://www.wildlifehc.org/migratorybirds)***

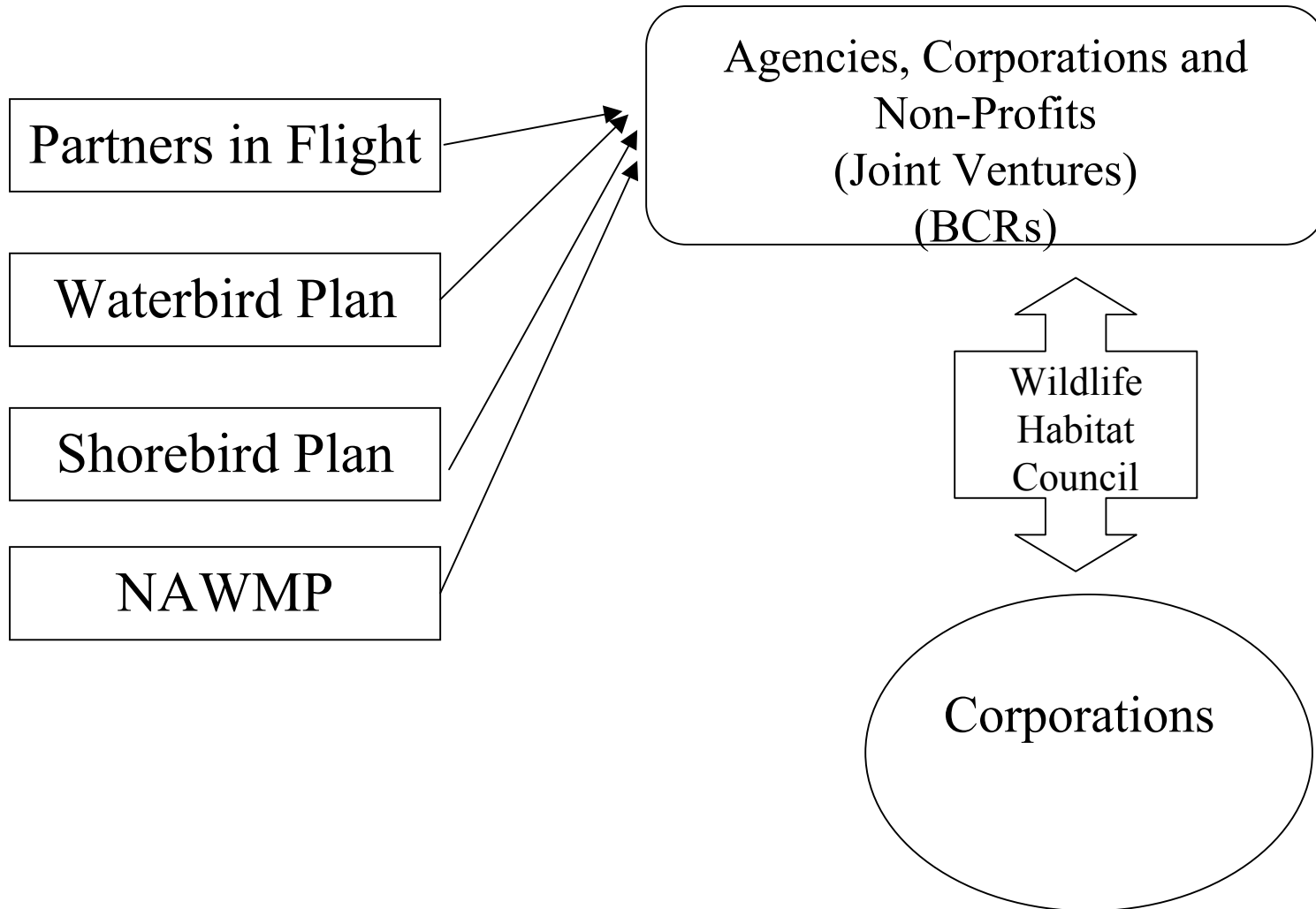
# *Steering Committee*

- \* *Steve Elbert, Chair* *BP*
- \* *Greg Biddinger* *ExxonMobil*
- \* *David Carroll* *Lafarge North America Inc.*
- \* *Tuss Erickson* *Consultant*
- \* *Robert Fenech* *Consumers Energy*
- \* *George Fenwick* *American Bird Conservancy*
- \* *Steve Funderburk* *U.S. Fish and Wildlife Service*
- \* *Pete Heard* *USDA NRCS*
- \* *Tom Kilroy* *Unimin Corporation*
- \* *Larry Selzer* *The Conservation Fund*
- \* *Tim Scott* *The Dow Chemical Company*
- \* *W. Alan Wentz* *Ducks Unlimited, Inc.*

# *Technical Committee*

- \* *Brad Andres*                      *U.S. Fish & Wildlife Service*
- \* *Ron Archuleta*                      *USDA Forest Service*
- \* *Steve Brown*                      *Manomet Center for Conservation Sciences*
- \* *Bob Ford*                      *U.S. Fish & Wildlife Service*
- \* *Mike Johnson*                      *U.S. Fish & Wildlife Service*
- \* *Greg Koeln*                      *EarthSat*
- \* *Tom Moorman*                      *Ducks Unlimited, Inc.*
- \* *Seth Mott*                      *U.S. Fish & Wildlife Service*
- \* *Dave Pashley*                      *American Bird Conservancy*
- \* *Debbie Pressman*                      *USDA Forest Service*
- \* *Cindy Ragland*                      *USDA Forest Service*
- \* *Charlie Rewa*                      *USDA NRCS*
- \* *Melanie Steinkamp*                      *USGS, Patuxent Wildlife Research Center*
- \* *Jennifer Wheeler*                      *U.S. Fish & Wildlife Service*

# ***OPERATIONAL STRUCTURE***



# *Agency and Non Profit Partners*

- \* **Alabama Dept. of Conservation & Natural Resources**
- \* **American Bird Conservancy**
- \* **Audubon Society of Western Pennsylvania**
- \* **Canadian Wildlife Service**
- \* **City of Decatur, Alabama**
- \* **Colorado Division of Wildlife**
- \* **Ducks Unlimited, Inc.**
- \* **Gulf Coast Bird Observatory**
- \* **Michigan Audubon Society**
- \* **Michigan Dept. of Natural Resources**
- \* **Morgan County Environmental Education Foundation**
- \* **National Audubon Society**
- \* **Nature Conservancy of Canada**
- \* **Ontario Ministry of Natural Resources**
- \* **Pennsylvania Game Commission**
- \* **Pennsylvania State University**
- \* **Rocky Mountain Elk Foundation**
- \* **Tennessee Wildlife Resources Agency**
- \* **Texas Parks and Wildlife Dept.**
- \* **The Nature Conservancy**
- \* **U.S. Fish & Wildlife Service**
- \* **USDA NRCS**
- \* **Westmoreland Bird & Nature Club**
- \* **Wetland Habitat Fund**
- \* **Wildlife Habitat Council**

# ***CORPORATIONS WILL BRING.....***

- ★ **Lands** often overlooked prime habitat.
- ★ Unique **vision and perspective**.
- ★ **Funds** (corporate and leveraged) for expenditure on their lands and beyond...via partnerships.
- ★ **Employees** on a mission!
- ★ National and international **consistency and longevity**.

# ***CORPORATIONS WILL RECEIVE...***

- ★ **A common bond**, via conservation, to “link” their own sites and beyond.
- ★ **Employee “stakeholders”** with increased personal and corporate camaraderie and commitment.
- ★ **Favorable exposure** in the conservation arena through a broad conservation network...to millions of birders!

*Individual sites provide specific  
temporal and spatial habitat needs  
for migratory birds....*

*When linked with other sites  
and land resources,*

*corridors are formed!*

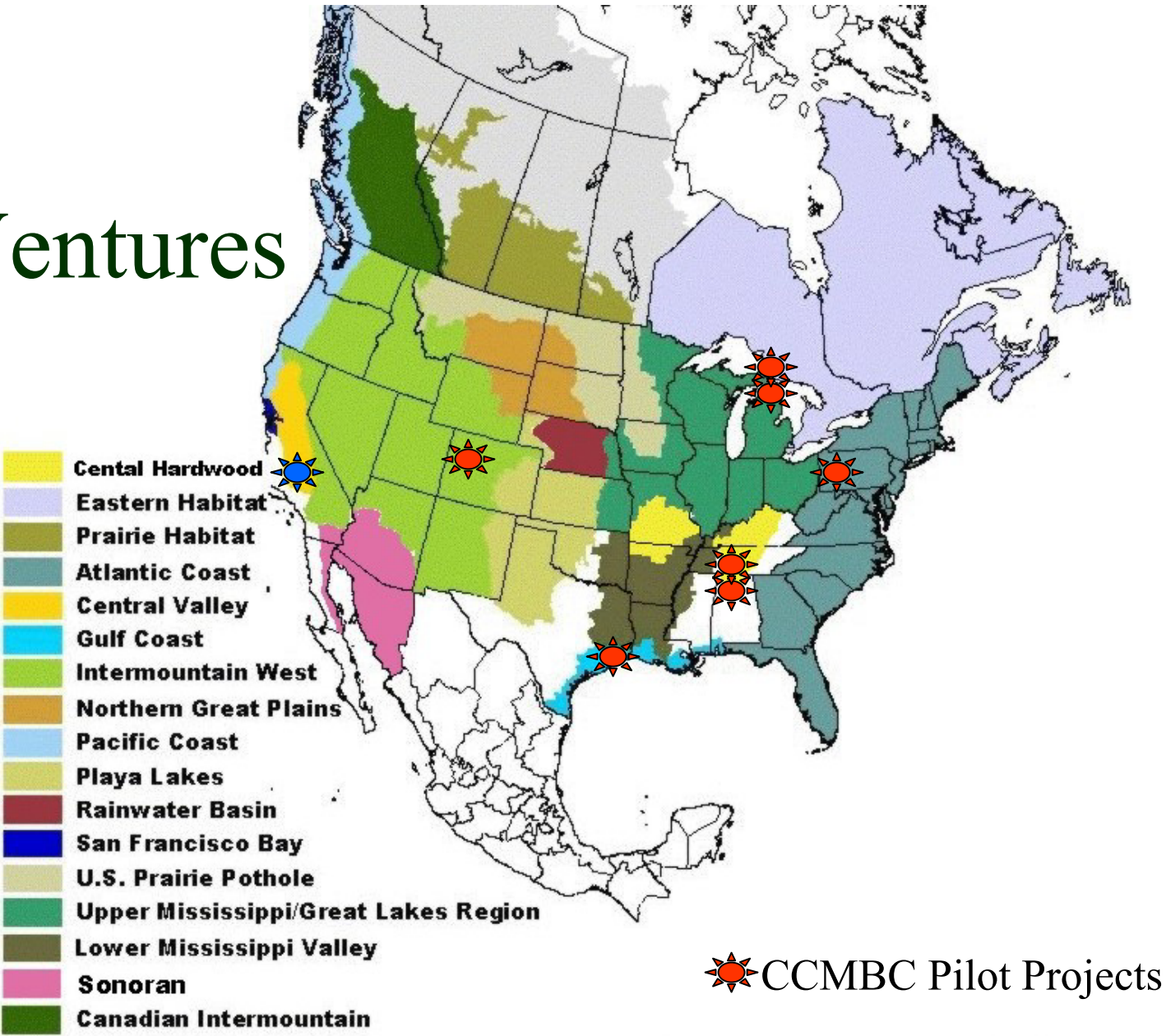


*If we work together to build it,  
enhance it or restore it.....*

*The birds will come!*

*Corporations sitting at the  
joint venture tables will create  
healthier partnerships...*

# Joint Ventures

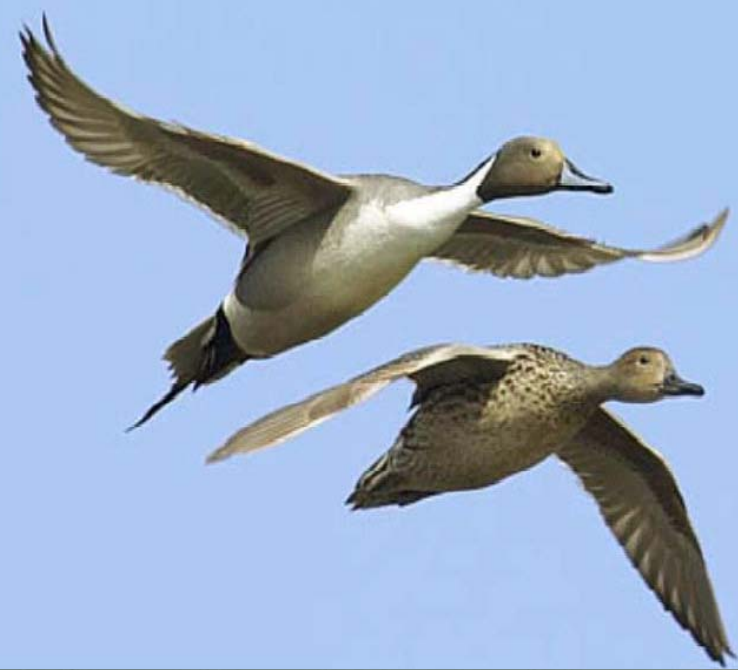
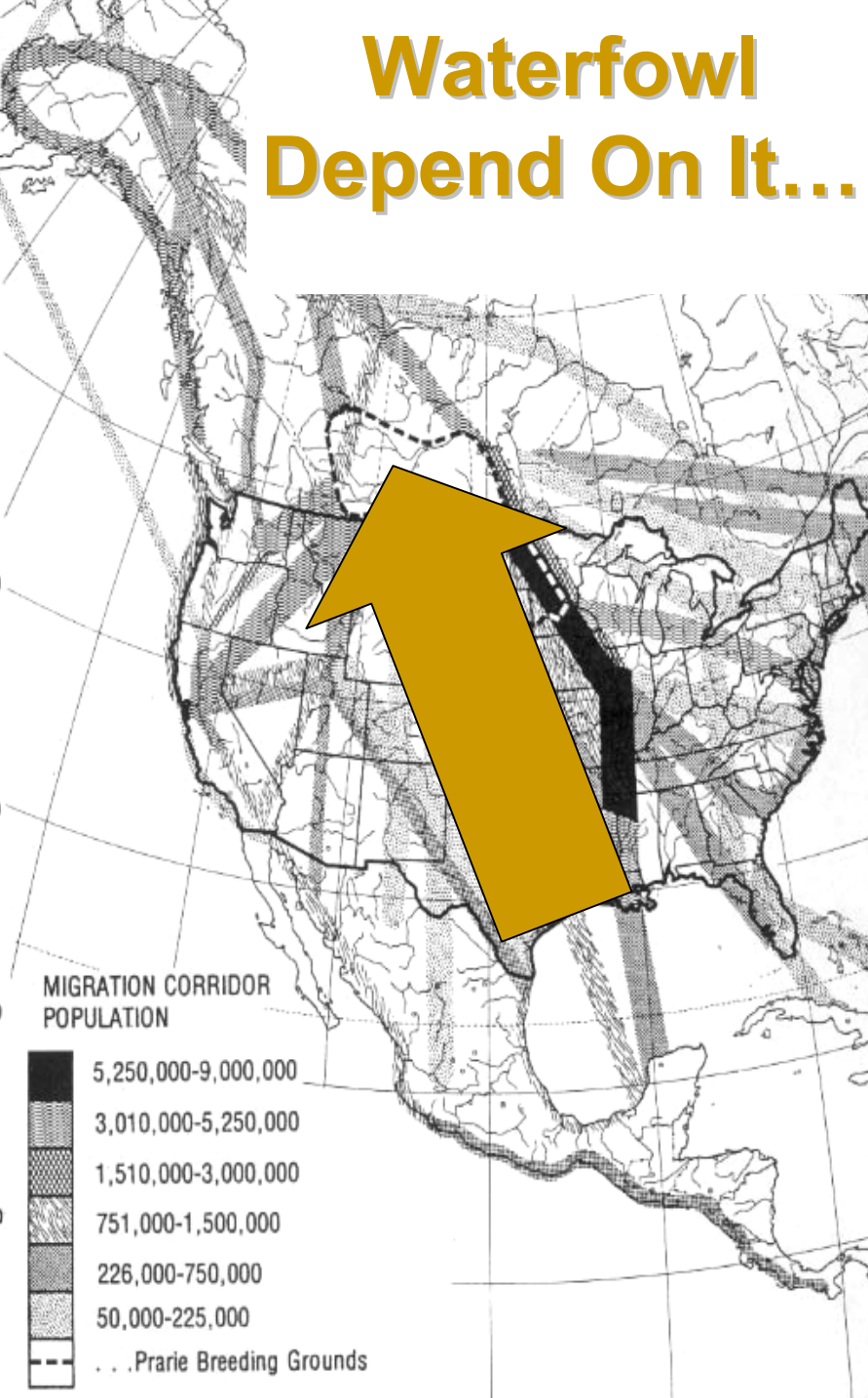


# *Gulf Coast*

*Several corporate sites are “in the mill” to help anchor this portion of the migratory corridor*



# Waterfowl Depend On It...





*As do all our migrating birds!*



*St. Mary's Island  
(ExxonMobil)*

# *Brazos River (DOW)*



# *Chocolate bayou* (BP)





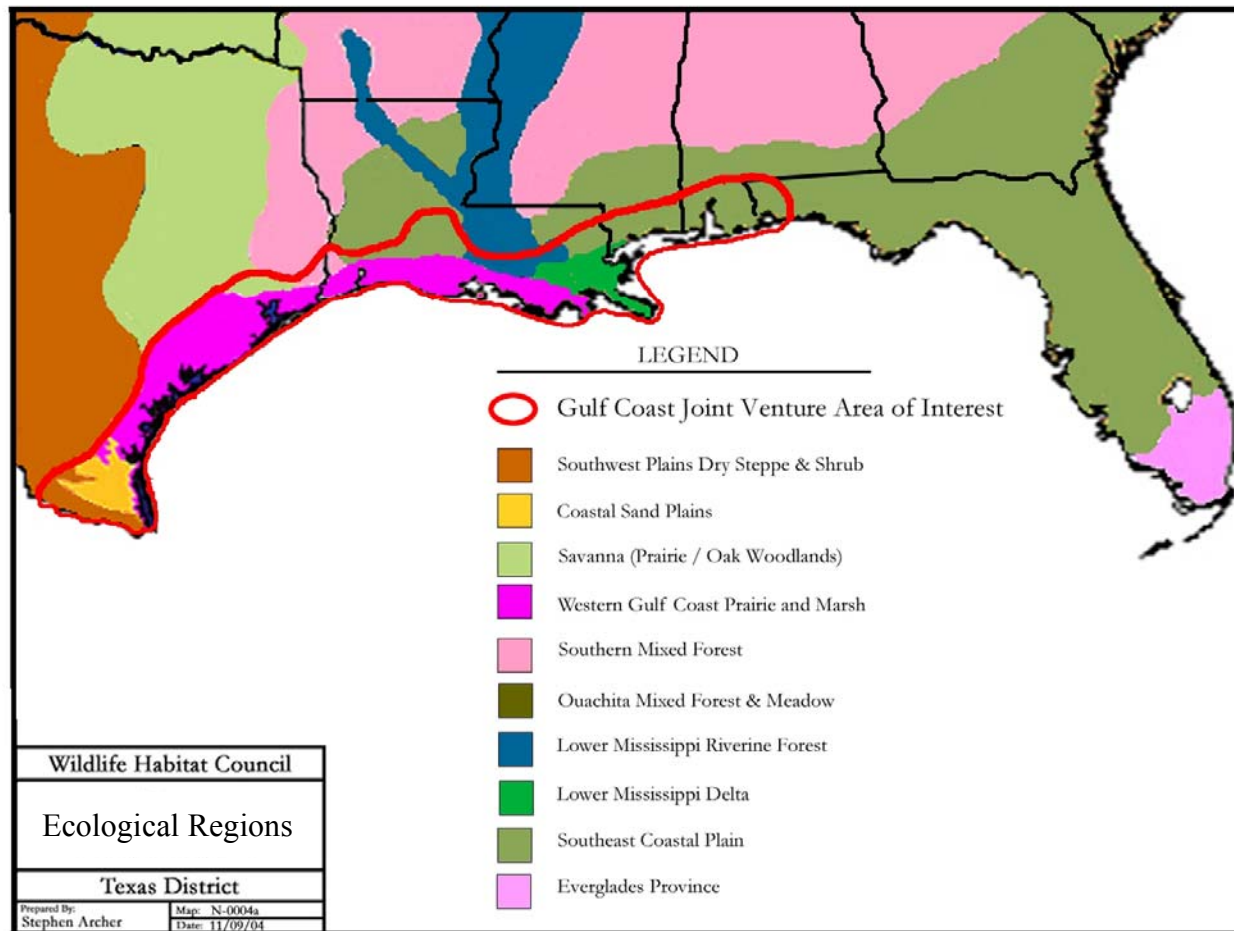
# *Newgulf Lakes (ConocoPhillips)*



# *Newgulf Lakes Egret Roost*



# *Mapping the Habitat along the Gulf Coast is in the Plans.*



*From the Gulf Coast, migrating  
birds go in many directions...*

*and have a variety of  
habitat needs.*

***Inter-Mountain West Joint  
Venture springs to action!***

***Shell Exploration is addressing a  
portion of those needs in the Piceance  
Basin and Colorado and White River  
Drainages in NW Colorado....***

# *Overview of Country*



# *Habitat...aspen, sage, pinion-juniper...*



***ASPEN***



***SAGE***



***PINION-JUNIPER***

# *...Riparian Systems...Sparse and Critical*

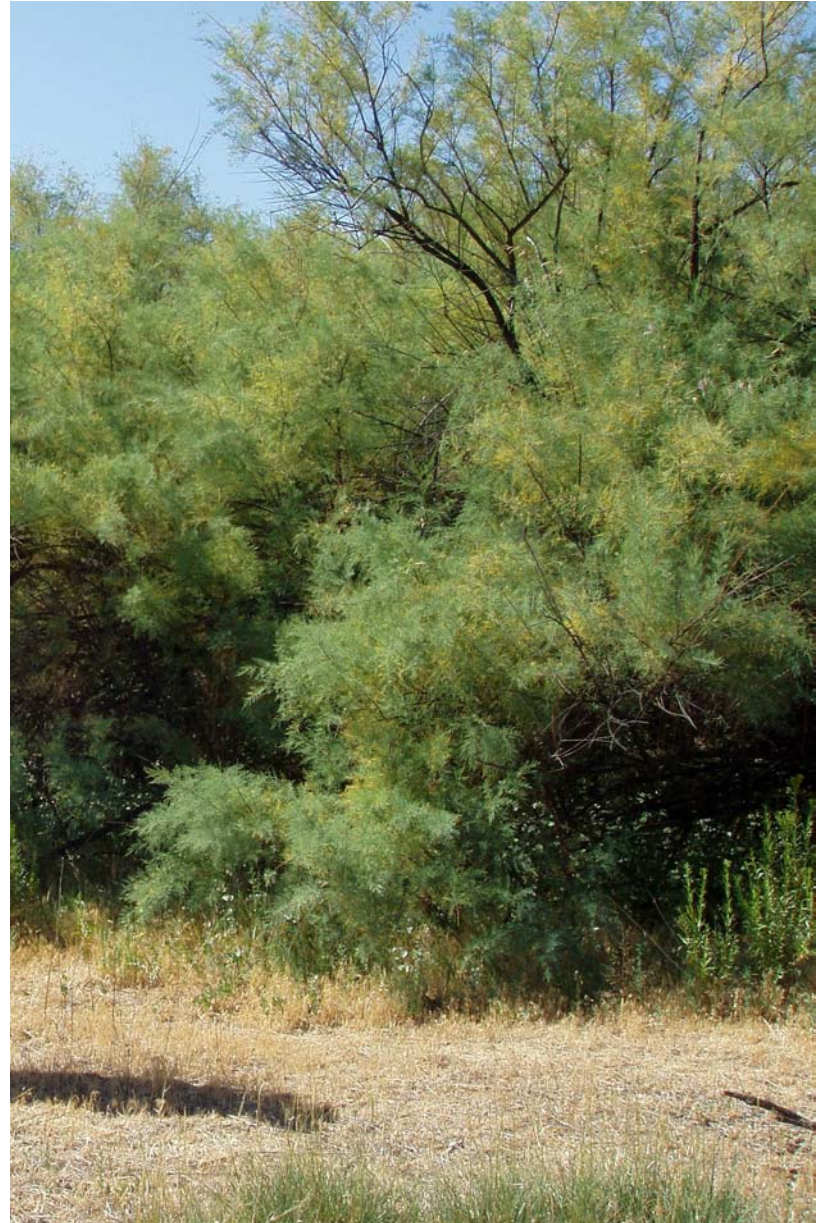




*The team, anchored in the Intermountain West Joint Venture, is plotting a better habitat course*



*Mapping and  
removal of  
invaders...  
tamarisk, etc.*



*Reworking grazing regime to permit improved regeneration of cottonwoods, willows and other native vegetation*

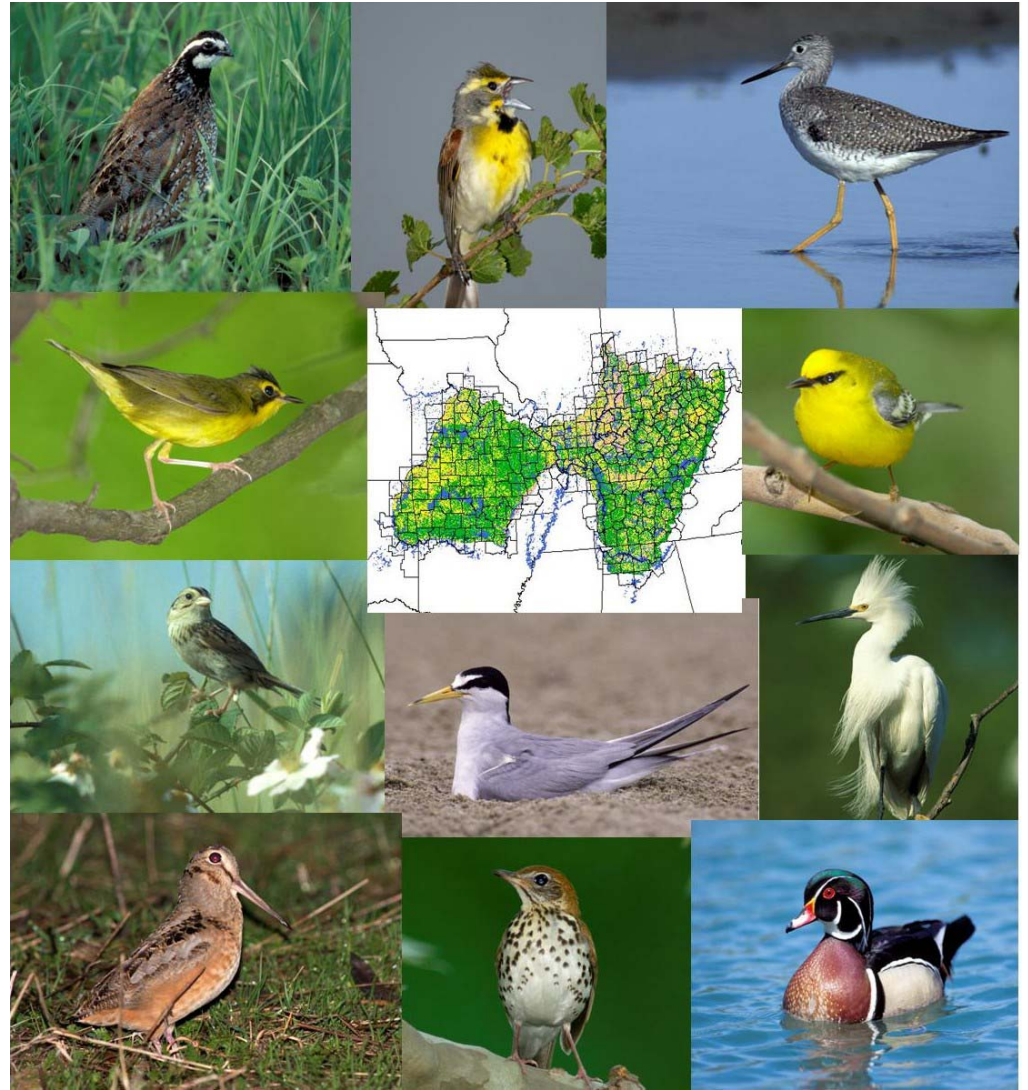
- ★ *Ivory Ranch on the White River*



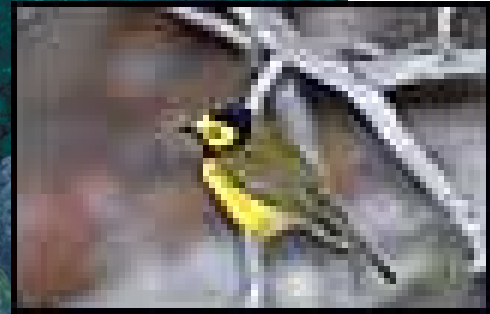
*Habitat management on  
spring-fed wetlands,  
wet meadows & oxbows*



*The Central  
Hardwoods  
Joint Venture  
comes into play  
as birds head  
northeastward  
from the Gulf.*



*Central Hardwoods...and a partnership  
with Bridgestone Firestone  
at work on their  
Chestnut Mountain property*



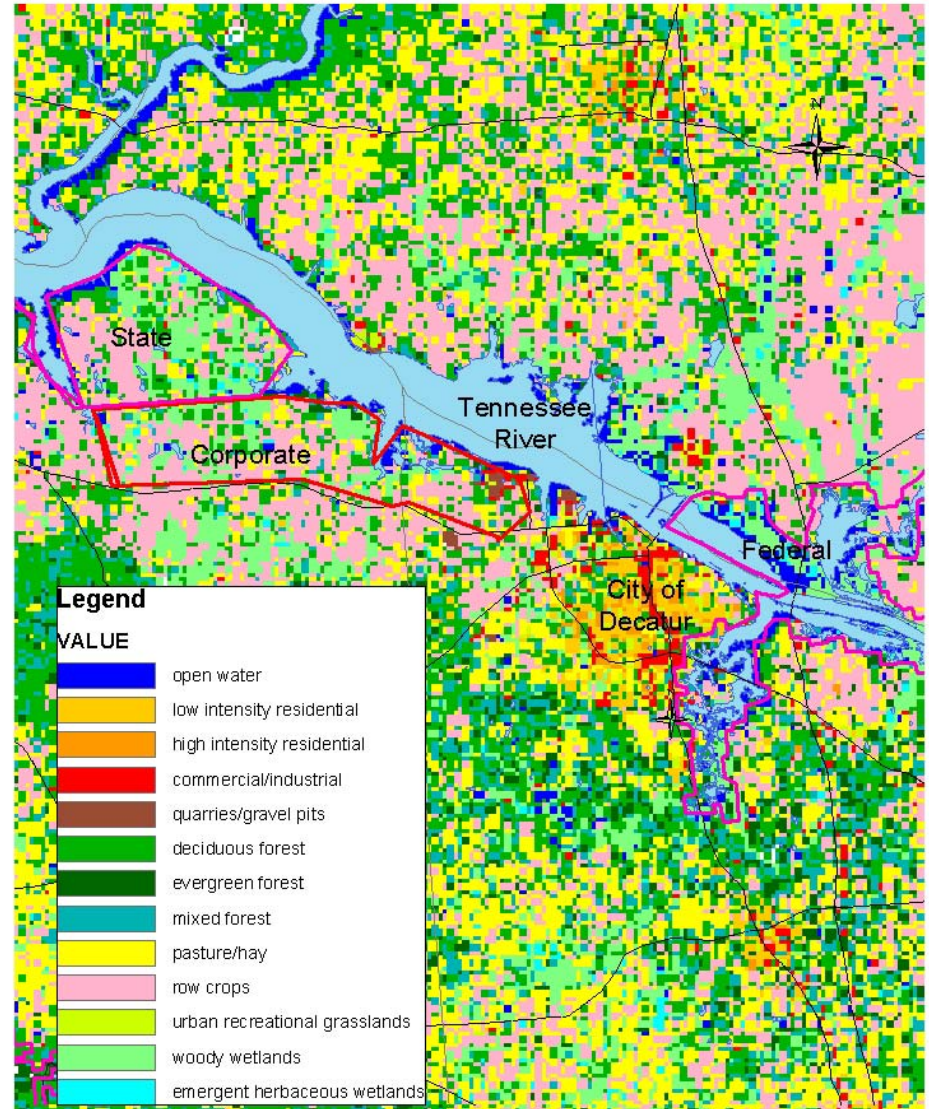
*...and at Warren County!  
The team at work...again!*



***WARM-SEASON  
GRASSES***

# *Tennessee River Corridor*

*BP, Nucor, 3M and  
Vulcan have brought  
some of their lands and  
resources to the table to  
make a difference.*





# *Tennessee River Flint Creek at Sunrise*



# *Controlled burns to re-establish warm-season grasslands*

*Fire Lane  
(Vulcan  
property)*



# *Drip Torching*



# *The Burn...*



*...to benefit grasshopper sparrows, dickcissels,  
eastern meadowlarks and relatives!*

*Northward now to the  
Upper Mississippi/Great Lakes  
and Eastern Hardwoods Joint  
Venture (Canada) where  
Lafarge is lending a hand  
with its land and people...*

# *The team...*



# *Reclaiming the habitat at the Alpena Plant*



# *Alpena hardwoods*





# *Neighboring Wetland Alpena*



# *Presque Isle Quarry*



# *Presque Isle Estuary*



# *A Presque Isle Bay*



# *Lake Huron Shoreline*



*Not surprisingly, birds don't recognize  
political boundaries....*

*so the corridor of habitat moves into  
Ontario with another entry from  
Lafarge on Manitoulin Island...*

# *Meldrum Bay*



# WHC's Great Lakes Regional Office Making Additional Plans...





# *Atlantic Coast Joint Venture*

*Also on that northward flight, migrants  
will find critical resting and nesting  
habitat in the Appalachian Mountain  
Region of Pennsylvania....  
Alcoa joins the team!*

# *Hardwoods and Openings*



*We can make a difference  
through the...*

*Corporate Campaign for  
Migratory Bird Conservation*

*...Together we can!*