

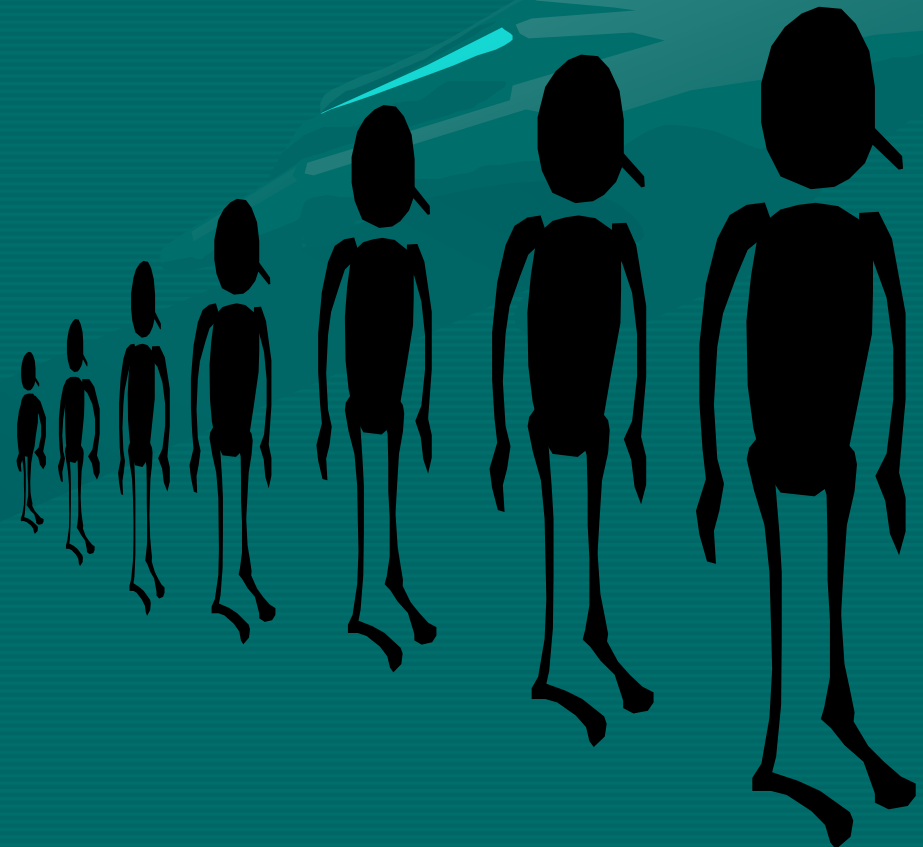
Evaluating Your Locally Led Conservation Planning Activities

Frank Clearfield
Social Sciences Team Leader
NRCS, Greensboro, NC
November 30, 2006

Outline

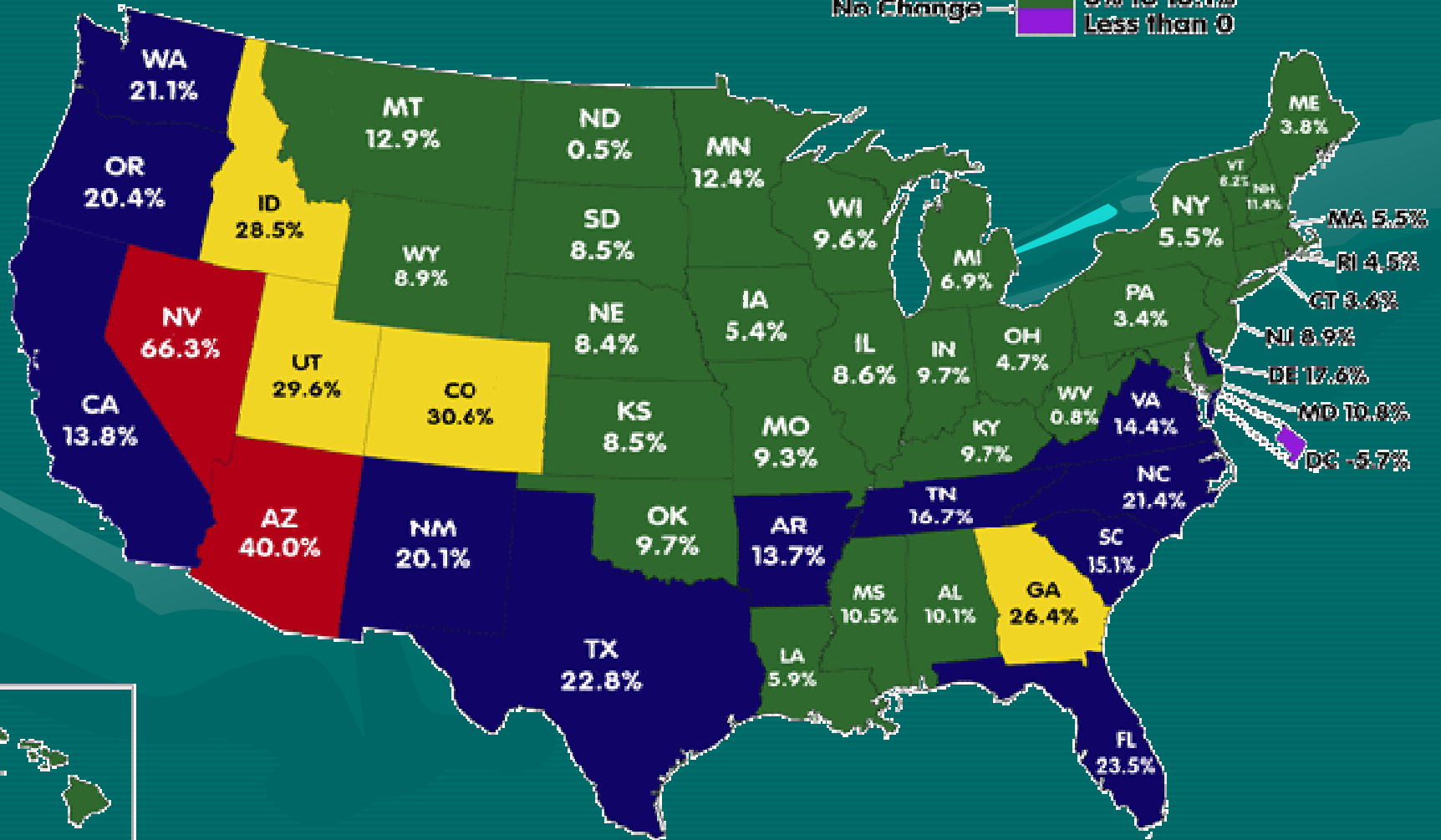
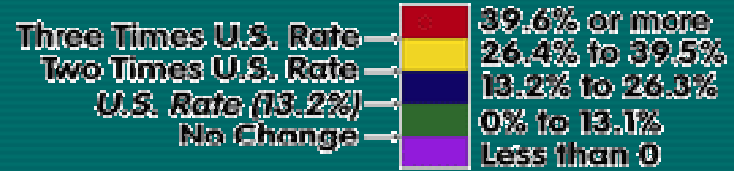
1. Population Trends
2. Agricultural Trends
3. Demographics of NRCS & some partner organizations
4. Foundations of Locally Led Conservation Planning & Rapid Watershed Assessments
5. Exercise & group application of evaluation procedure
6. Training CD

1. Population Trends



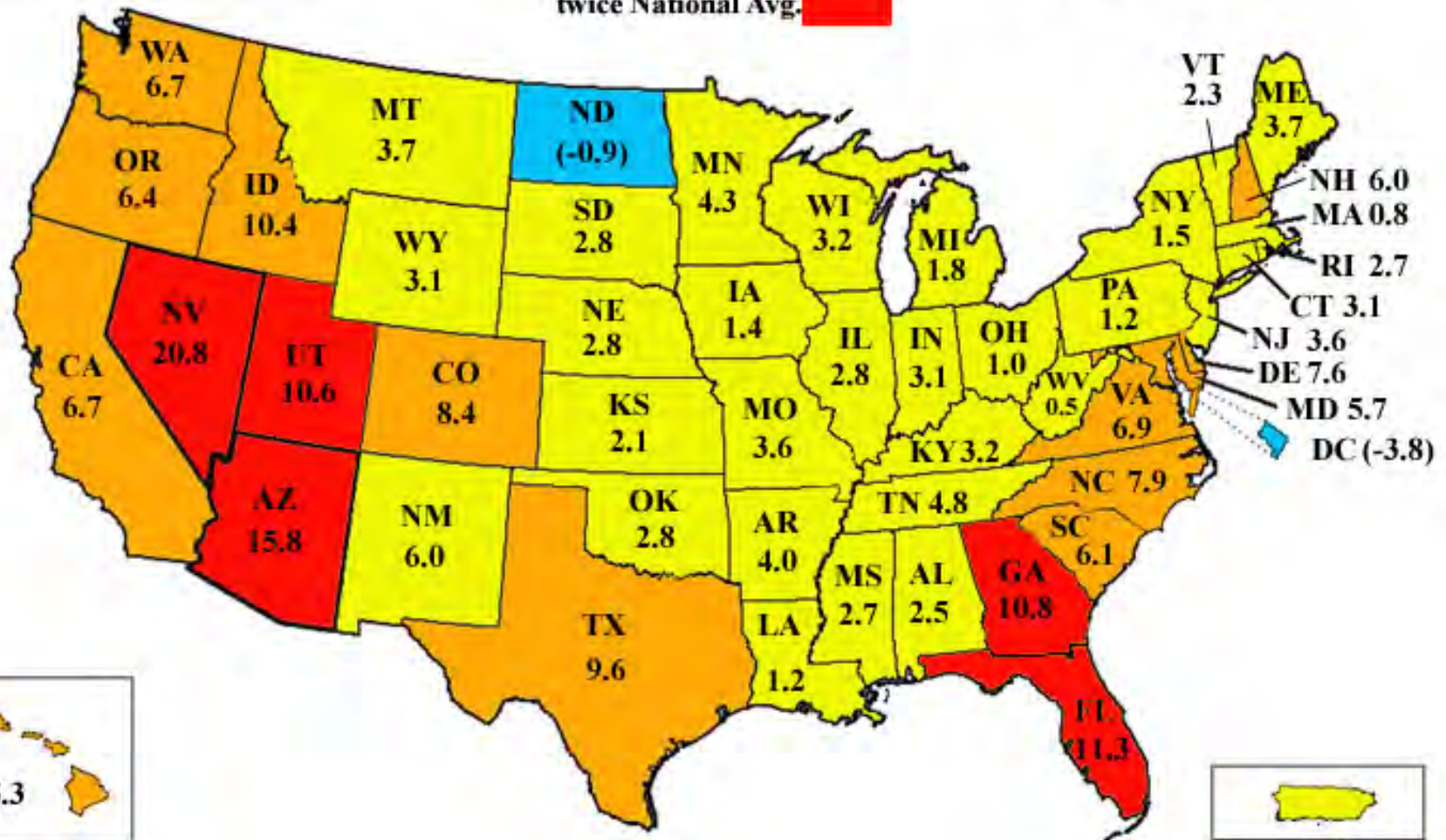
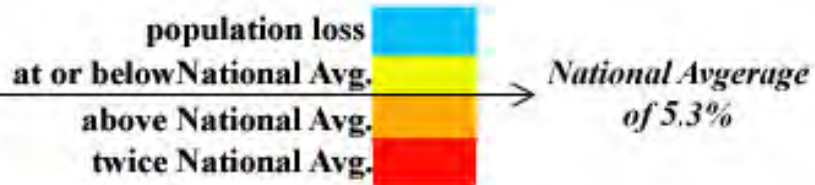
Percent Change from 1990 - 2000

PERCENT CHANGE



Percent Change in U.S. Population: 2000 - 2005

scale based on U.S. National Average

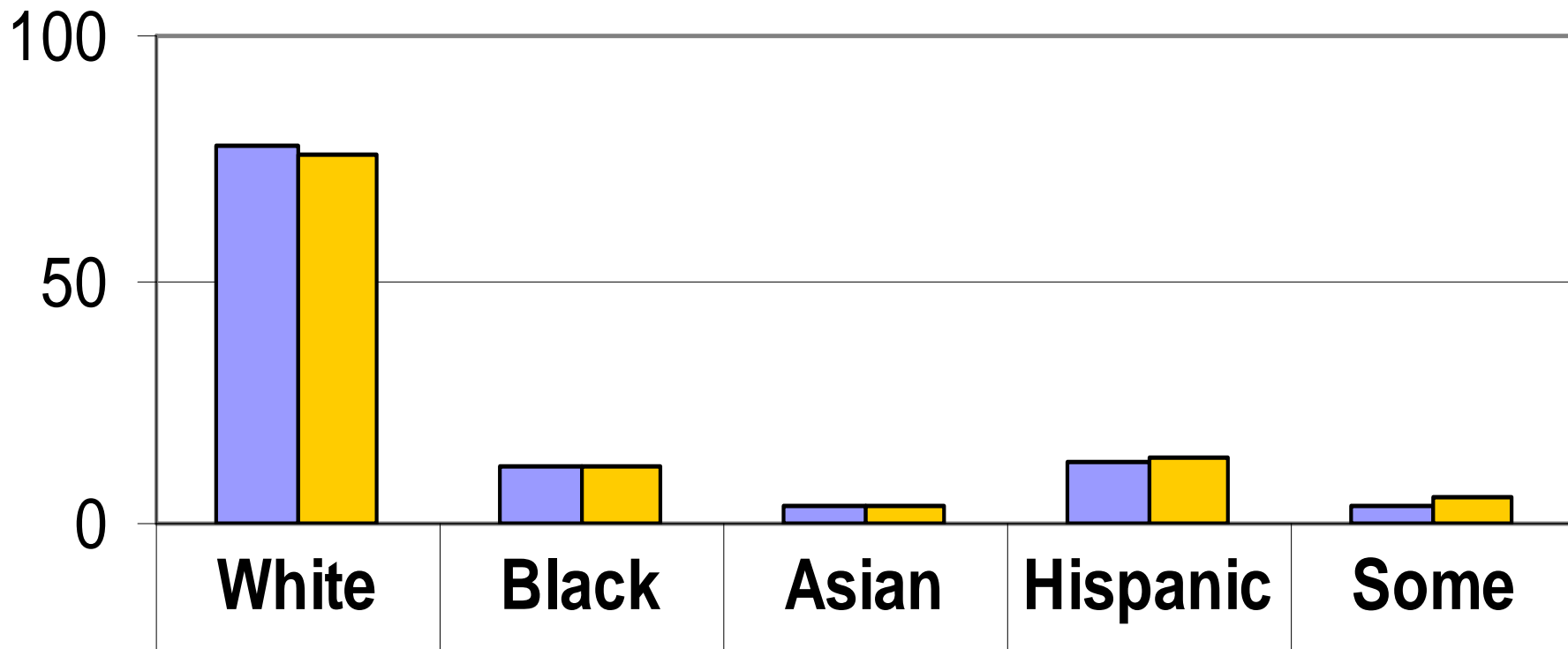


Population changes

- 300 million milestone
- 10% born in a country different than the U.S.; 43% of those are Hispanic/Latinos
- By 2020, recent immigrants and children of foreign or mixed parentage will account for almost 25% of the U.S. population
- By 2050, Whites will be about half the US population

Race by Percentage - United States

2000 - 2002



2000

77.3

11.9

3.8

12.6

3.9

2002

75.8

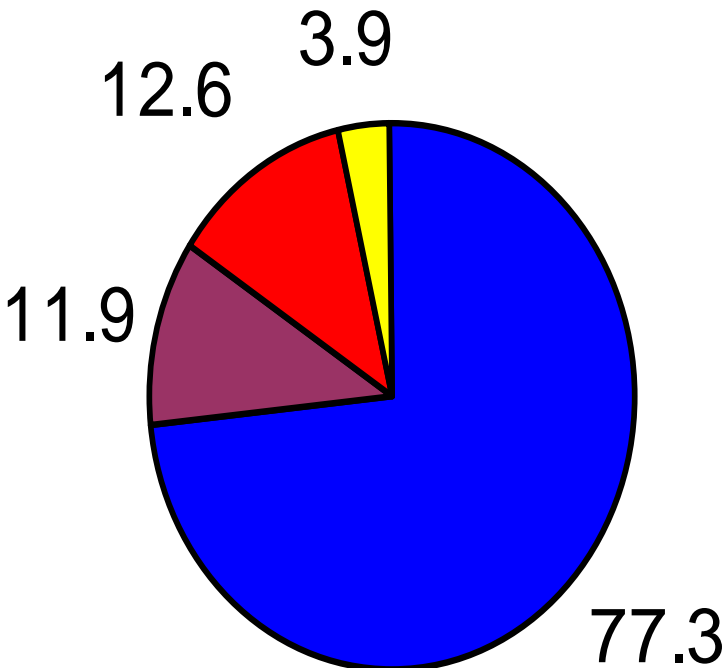
12

4

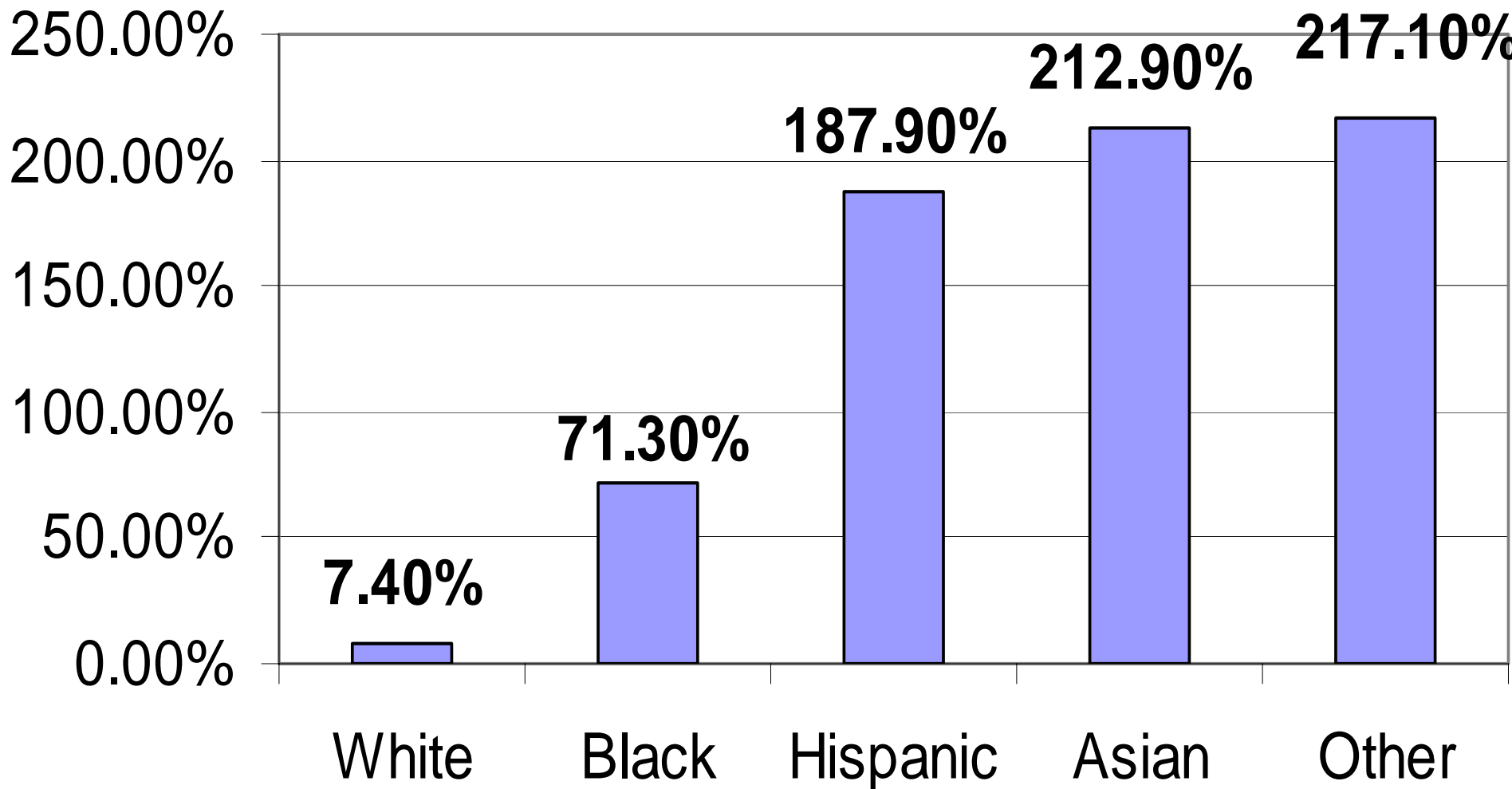
13.5

5.1

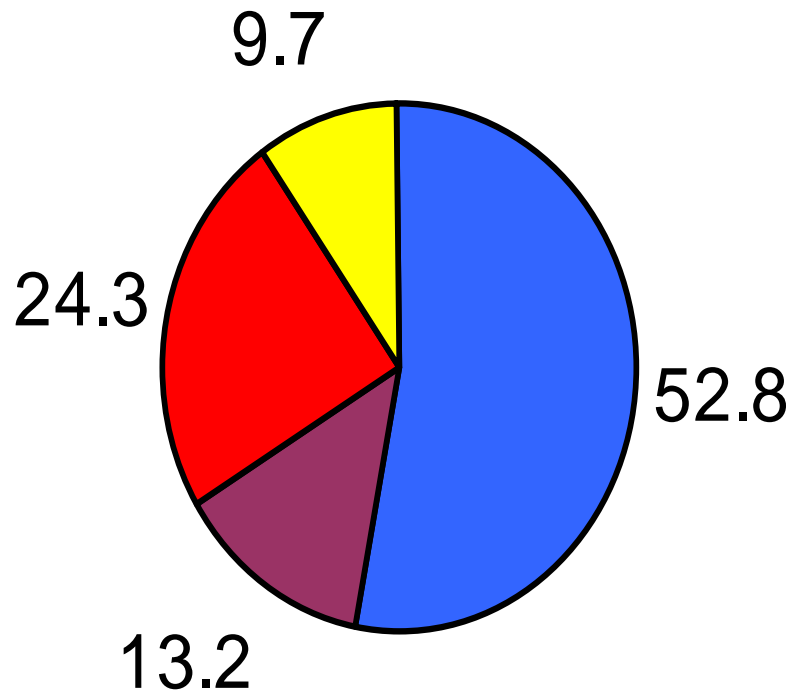
Percent of U.S. Population by Race 2000



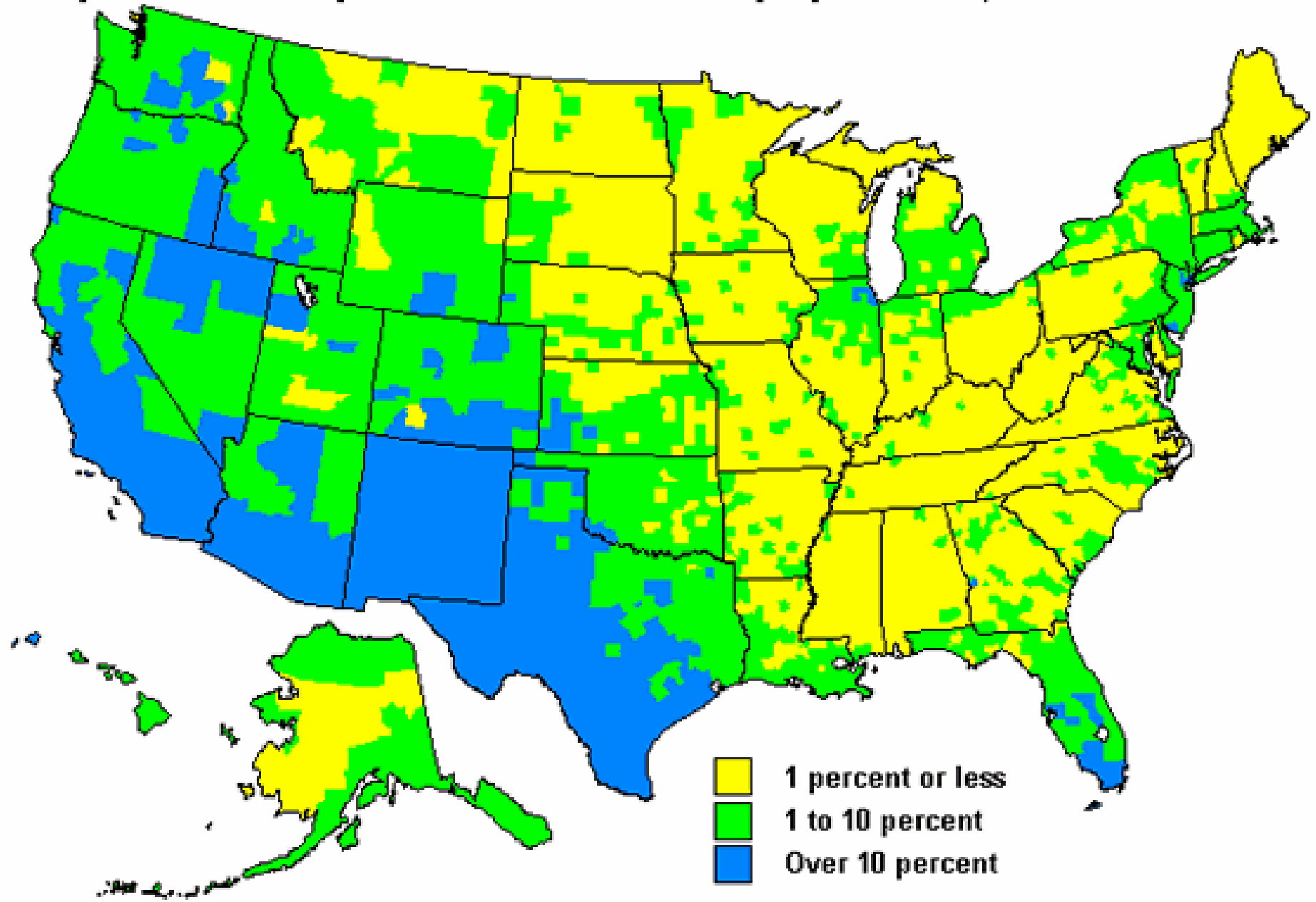
Projected population percent increase from 2000 - 2050



Percent of U.S. Population by Race 2050 (Projected)

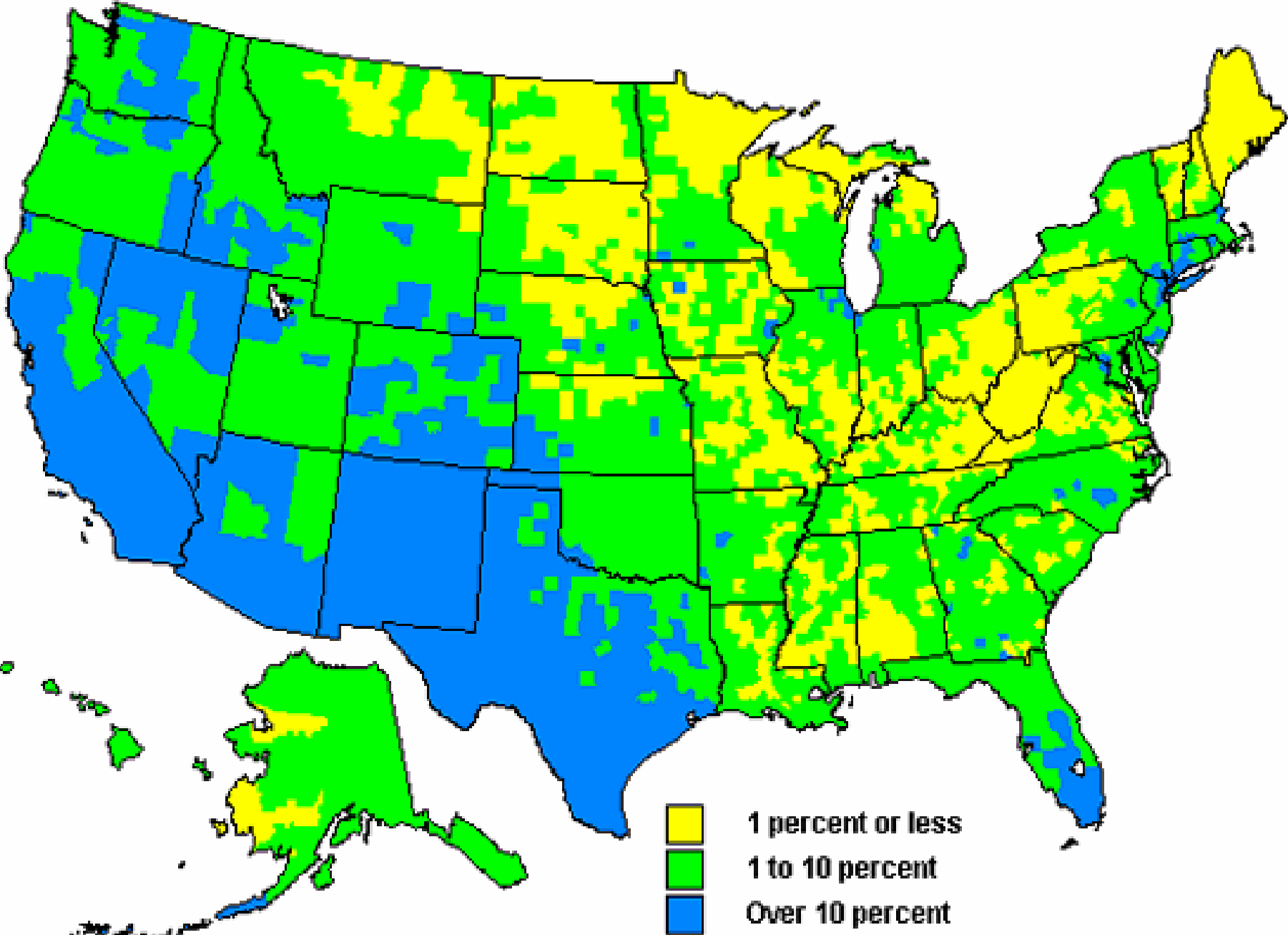


Hispanics as a percent of the total population, 1990

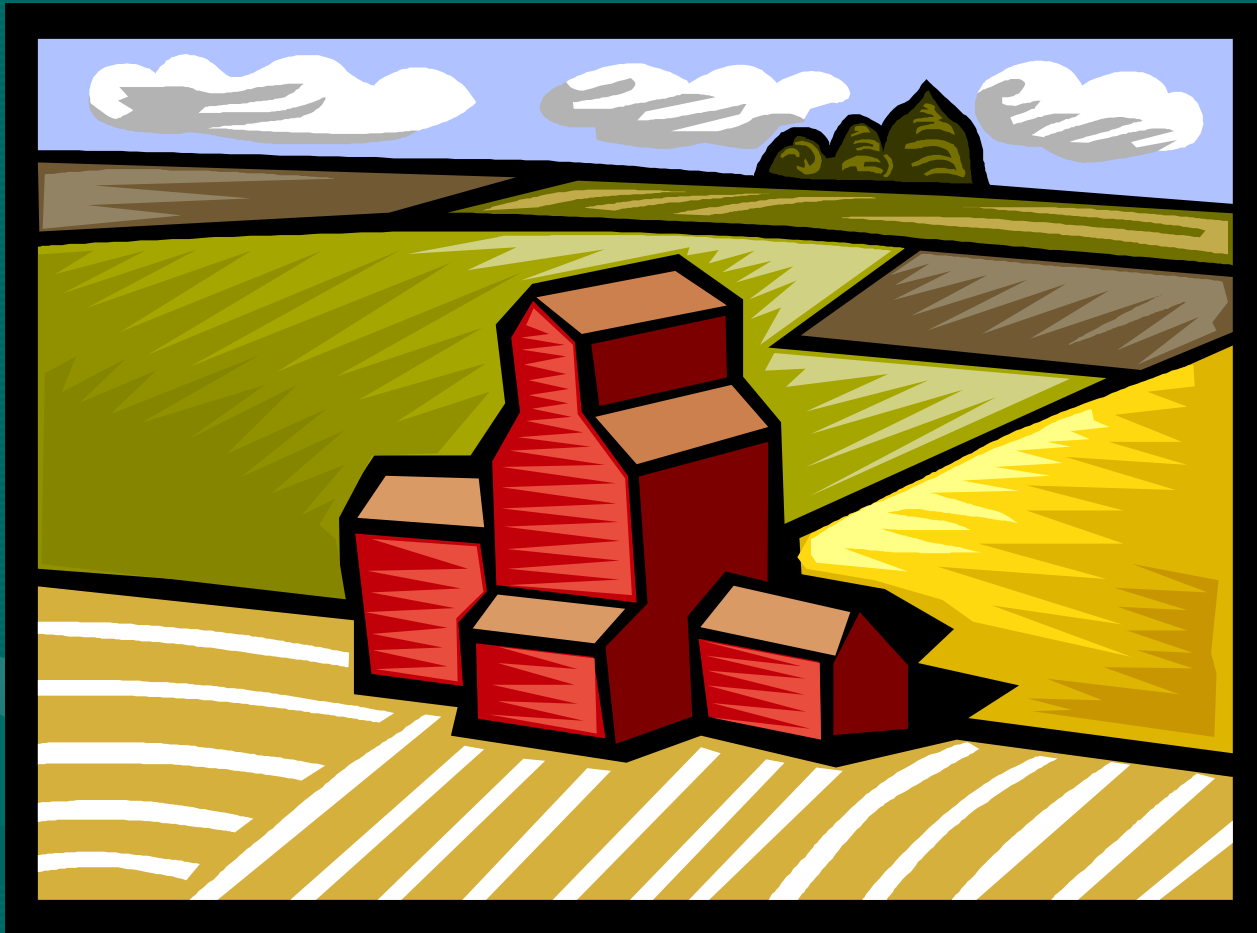


Source: Calculated by ERS using data from the 1990 Census of Population.

Hispanics as a percent of the total population, 2000



2. Agriculture Trends



Agriculture Trends

- As of 2002, “beginning farmers” make up about 28% of all principal operators and about half operate farms less than 50 acres.
- Females farmers number about 240,000 principal operators; control 28% of leased farmland and jointly own an *additional* 48% of rented acres (2002)
- Minority farmers operate about 8.4% of US farmland as of 2002


Agriculture Trends

- In 2000, there was a 25% growth of Hispanics in rural areas; from 1997 to 2002, a 50% increase in numbers of farmers (51k) & 4 million increase in acres farmed (21 million)
- Black principal operators increased by 8.8% from 1997 to 2002 (~ 29,000)
- From 1992-2002, the American Indian population increased by 48% and farms owned or operated increased by 85%

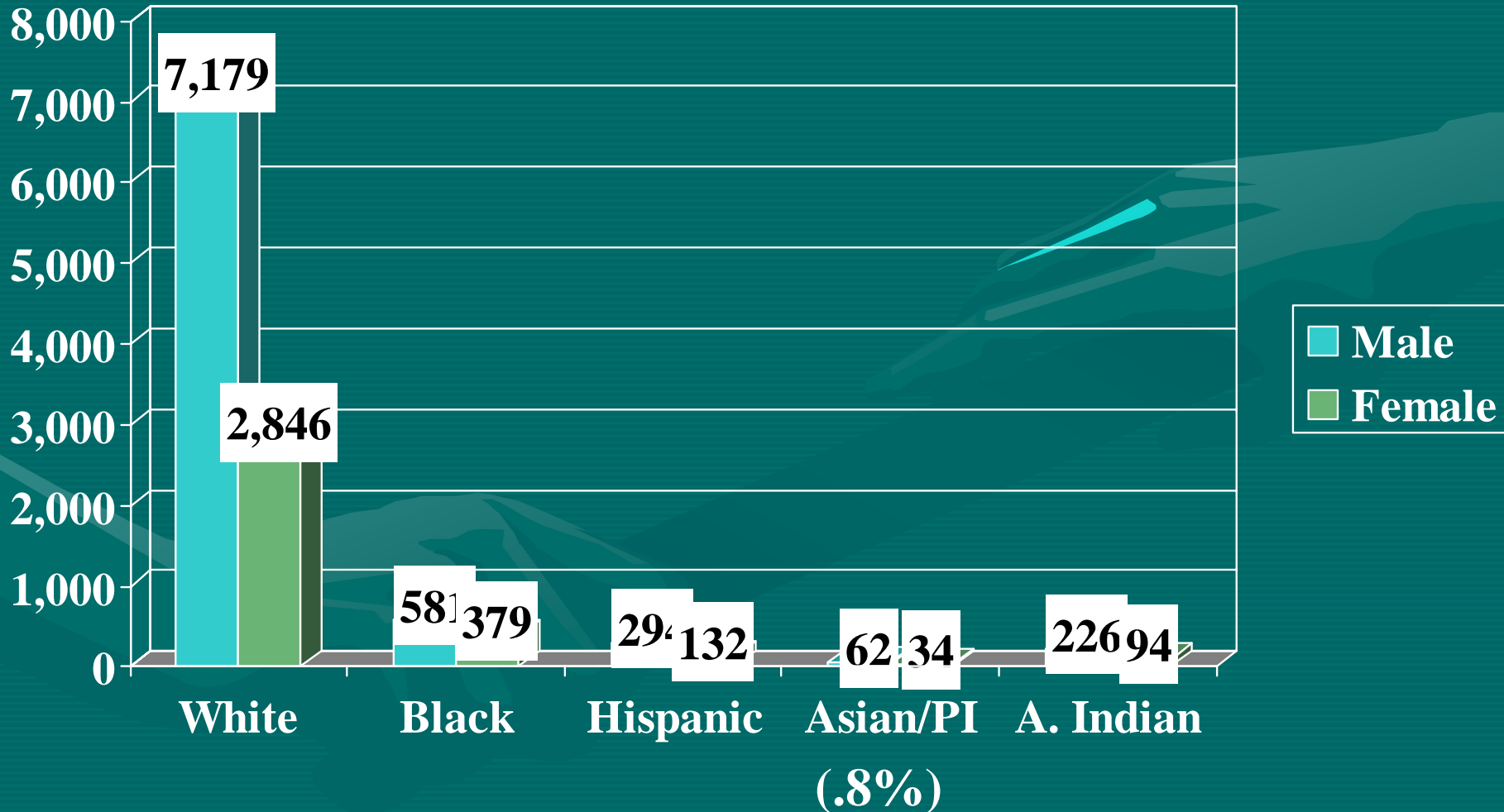
NRCS Trends

- Minority populations have higher acceptance rates in NRCS programs than Whites
- However, in FY-05, the total amount of money transferred is low – \$53 million for minorities compared to 1.1 billion for Whites (including females).

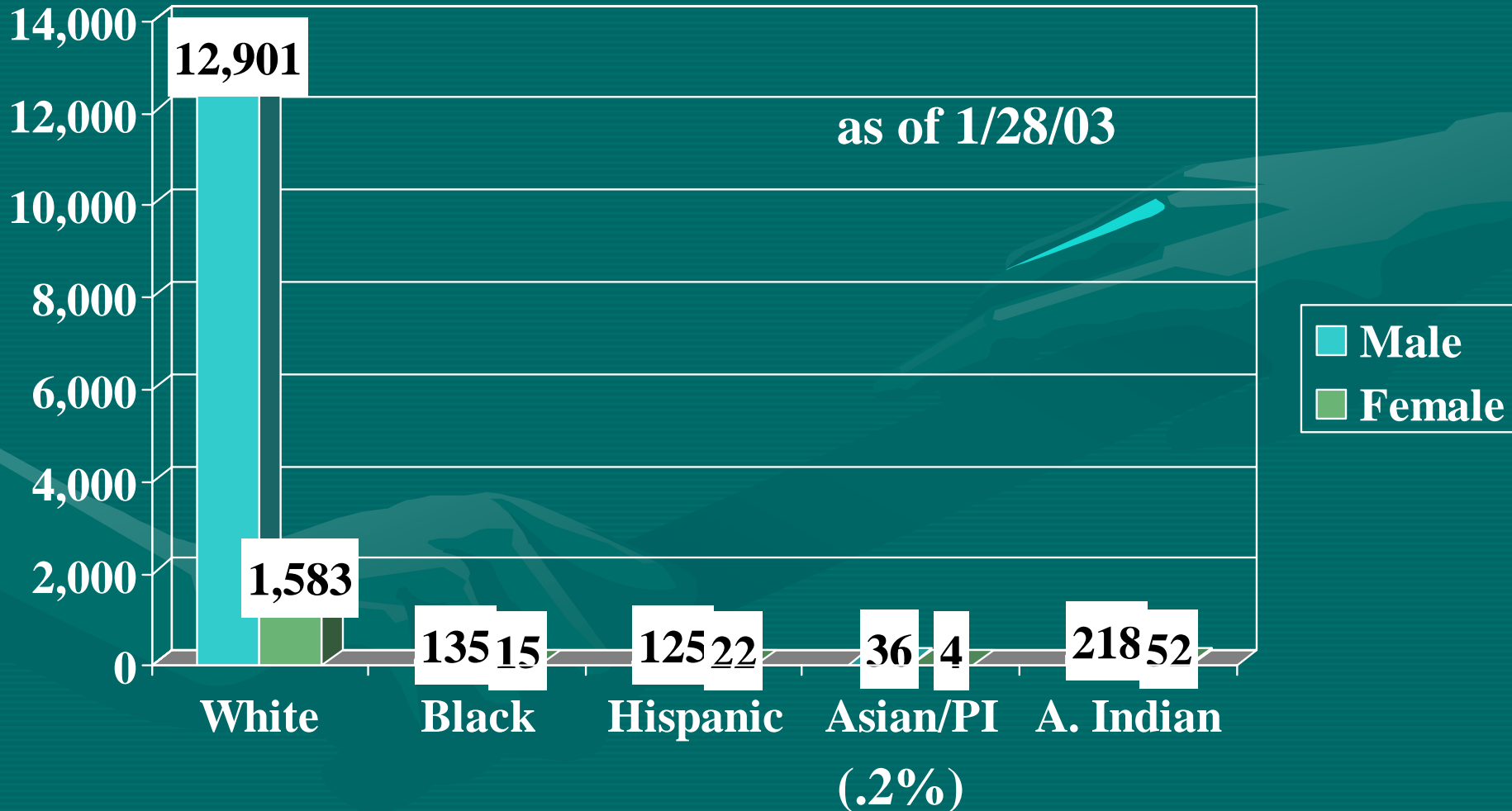
3. Demographics of NRCS and Some Partner Organizations

The background of the slide is a solid teal color. In the lower half, there is a faint, semi-transparent graphic of two hands shaking, symbolizing partnership or agreement. The text is centered and rendered in a white, serif font with a subtle drop shadow.

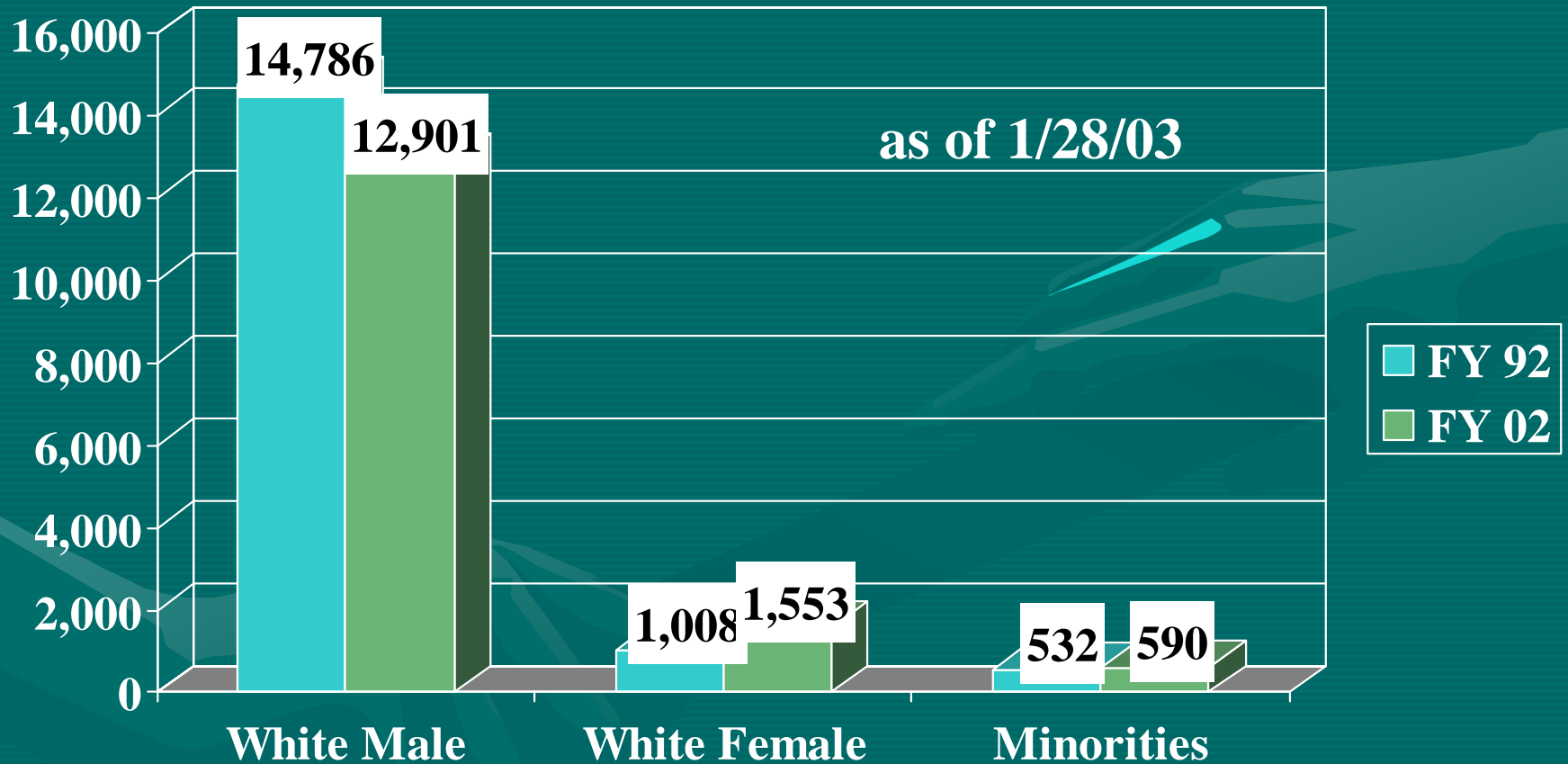
NRCS Work Force, FY 2002



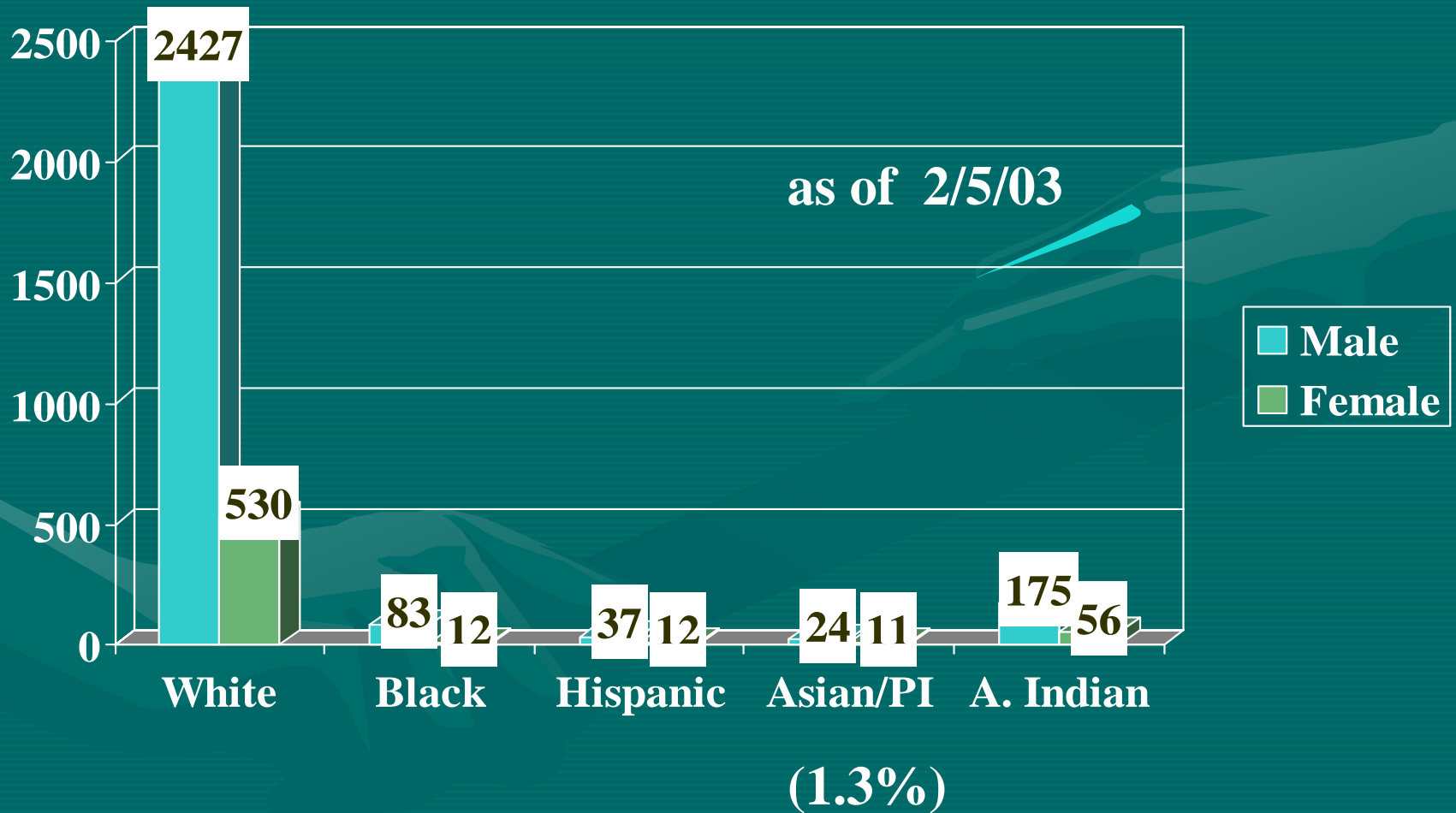
Soil & Water Conservation District Boards



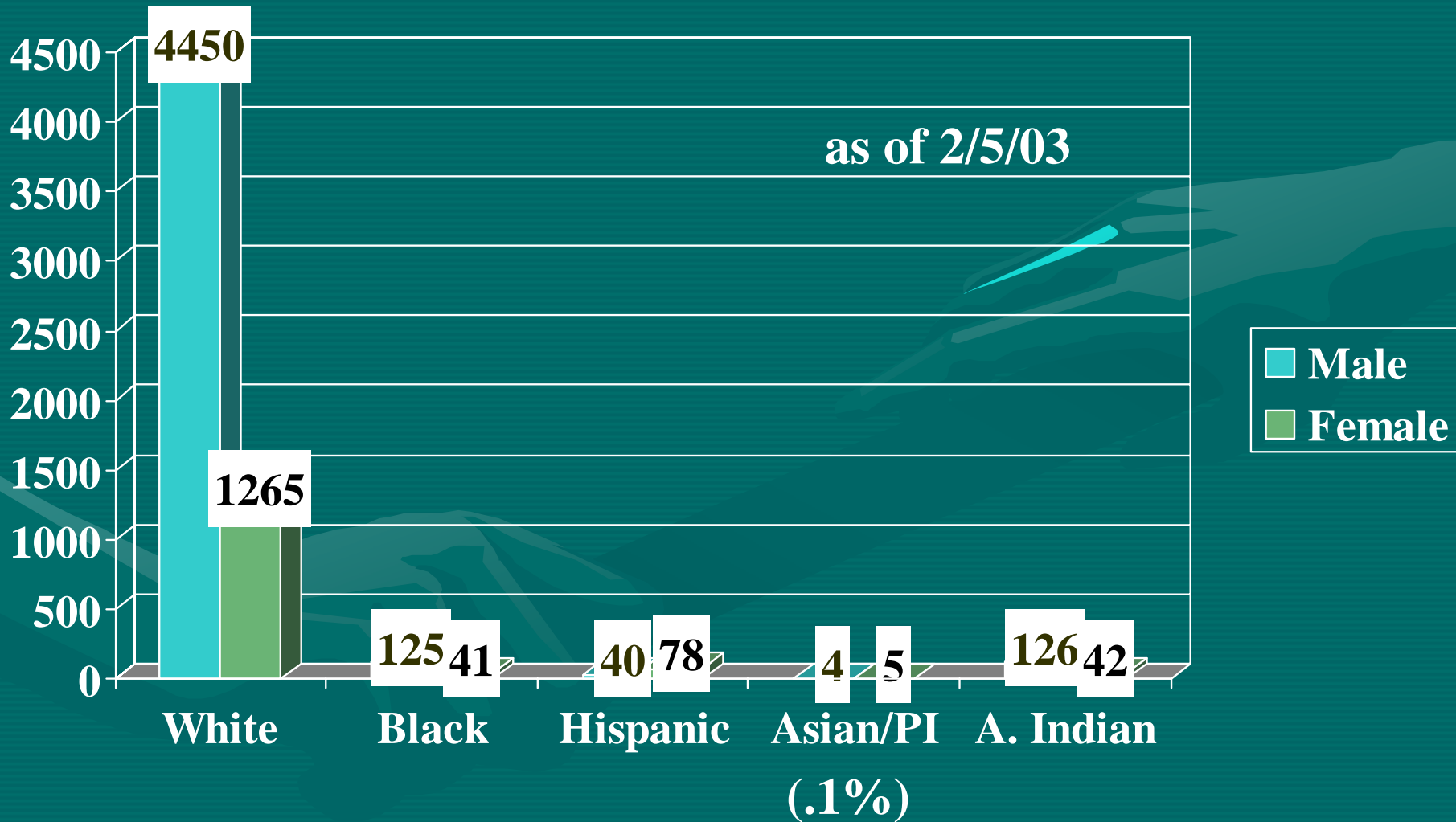
Soil & Water Conservation District Board Trend



State Technical Committees

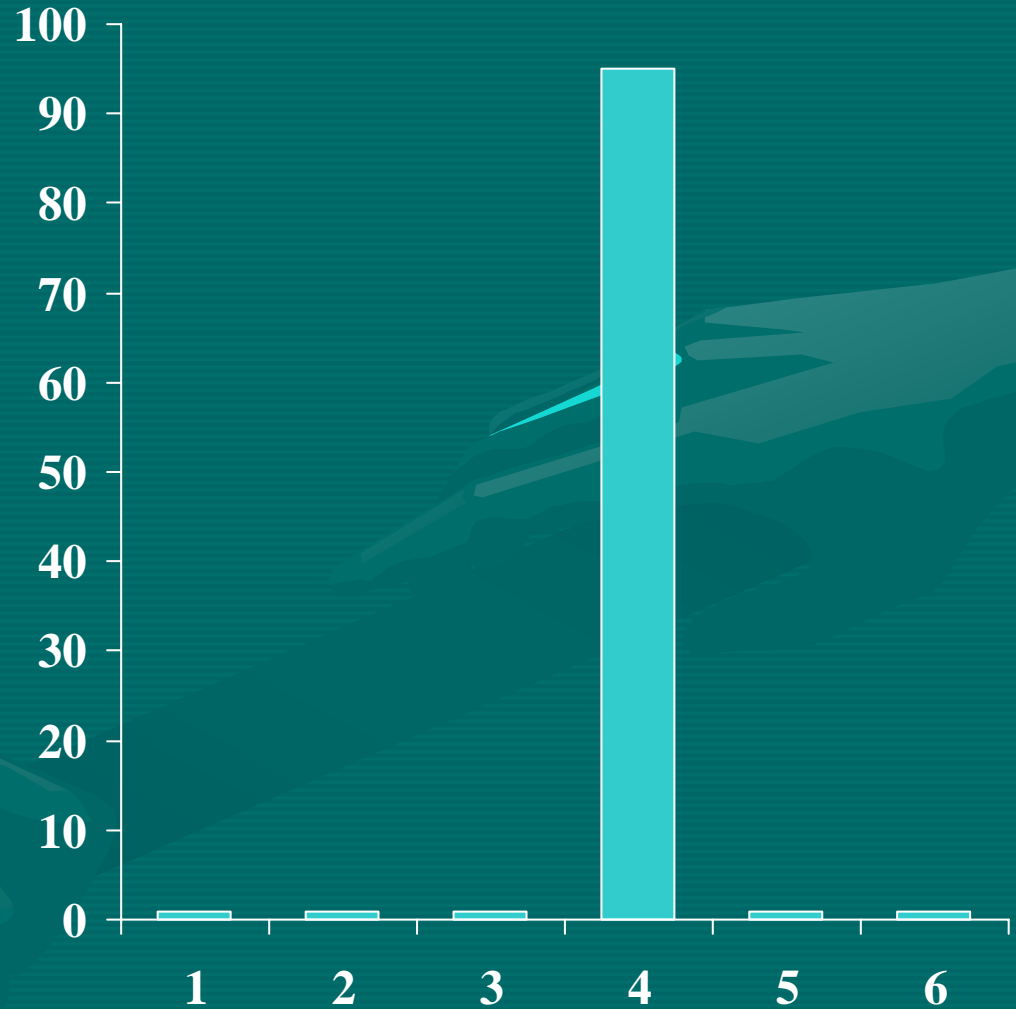


RC&D Council Members



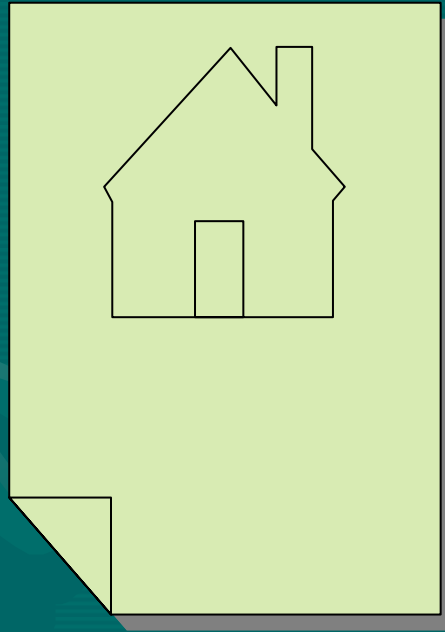
Earth Team Ethnic Status

1. American
Indian/Alaskan Native
2. Asian American/Pacific
Islander
3. Black/African American
4. Caucasian/White
American
5. Latino/Hispanic/Mex-
ican American
6. Other



(Survey, July, 2001)

4. Foundation of Locally Led Planning & Rapid Watershed Assessments



Skill Set Needed to Execute Activities

- Ability to Listen
- Analytical abilities
 - Resource assessment
 - Identify community power
 - Identify & recruit a diversity of group leaders

Skill Set Needed to Execute Activities (cont.)

- Facilitation
 - Conflict management
 - Prioritization
- Leadership
- Marketing

What do you do with those skills?

- Assess the type of community
- Develop a community profile
- Work with community to identify & prioritize issues

What do you do with those skills?

- Identify community power and work with community leaders
 - Be inclusive by identify and inviting all groups to participate
 - Network
- 

What do you do with those skills?

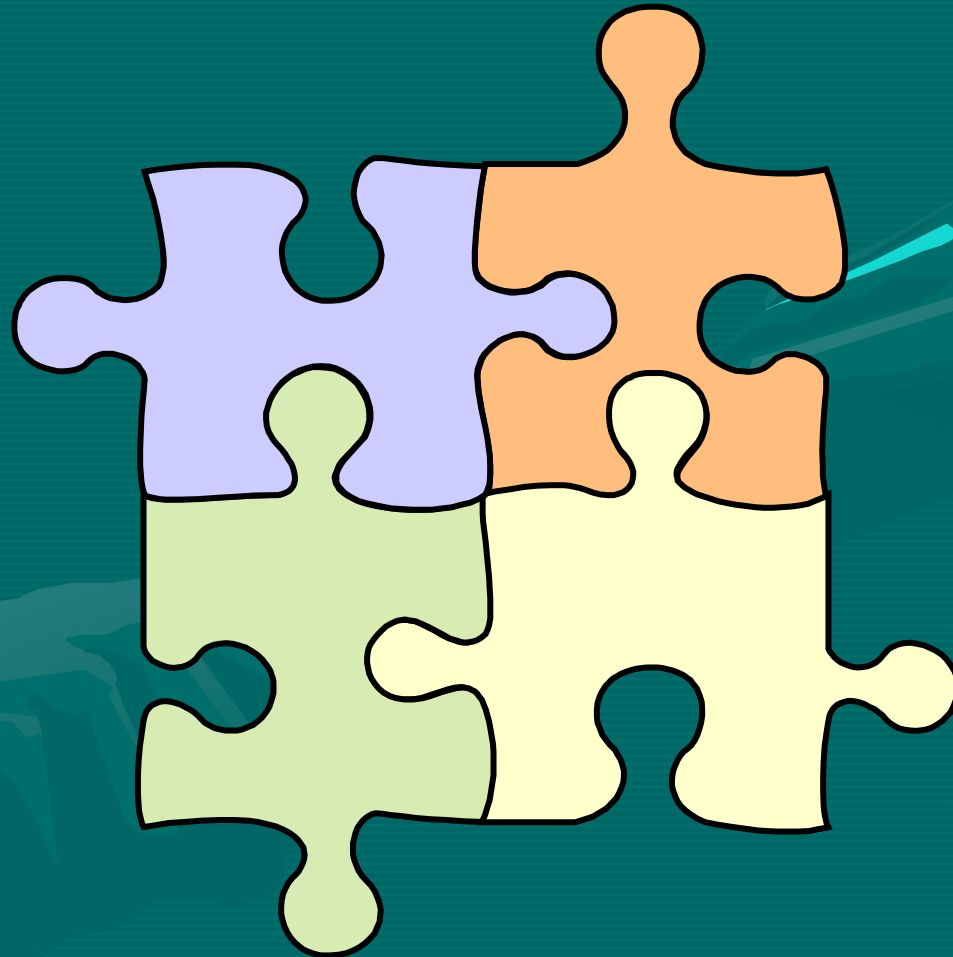
- Facilitate meetings effectively
- Manage conflict
- Lead the process




5. Exercise and application of evaluation procedure



6. Training CD



Training Contents

- PowerPoint
 - Notes
 - Handouts
 - Exercises
 - Activities
- 

Thank You for Your Attention

- Questions
- Contact Information:
frank.clearfield@gnb.usda.gov
- Social Sciences Coordinators