

This project will result in a major realignment of the business process for fire preparedness planning and budgeting. This realignment goes beyond simply enhancing existing processes and procedures; it establishes a new paradigm for fire planners.

Figure 1 depicts the full scope of activities of federal wildland fire management programs. Land and Resource Management Plans developed for federal land management units set general fire management objectives for an administrative unit. Fire Management Plans tier from these broad general management plans and describe more specific objectives for the fire management program. Fire Management Plans can be developed for a single administrative unit or collaboratively, among different units and across agency boundaries. However, every federal land management unit with burnable wildland vegetation is required to have a Fire Management Plan.

Fire management objectives are set for the following core program elements:

- Wildland Fire Suppression, including
 - Initial Attack
 - Extended Attack
 - Large Fire Support
- Wildland Fire Use
- Fuels Management, including
 - Prescribed Fire
 - Non-Fire Fuel Application
- Emergency Rehabilitation and Restoration
- Prevention.

Preparedness refers to activities associated with both Wildland Fire Suppression and Wildland Fire Use. These program elements represent the core fire management program.

Figure 2 depicts the scope of the program elements included in the analysis provided by the Preparedness Module. The Preparedness Module of the FPA System will deal with a **portion** of the fire management program that addresses Preparedness activities. This module will account for the objectives, program elements, and associated costs that comprise only the preparedness portion of the fire management budget. It is also important to note that the first installment of the Preparedness Module will include initial attack readiness, but not extended attack and large fire support. These functions will be added in a later version of the Preparedness Module.

The resulting application and database are also intended to be a foundation for future enhancements that will add modeling and budget considerations for all other elements of the wildland fire management program.

Figure 1: Fire Management Program Diagram

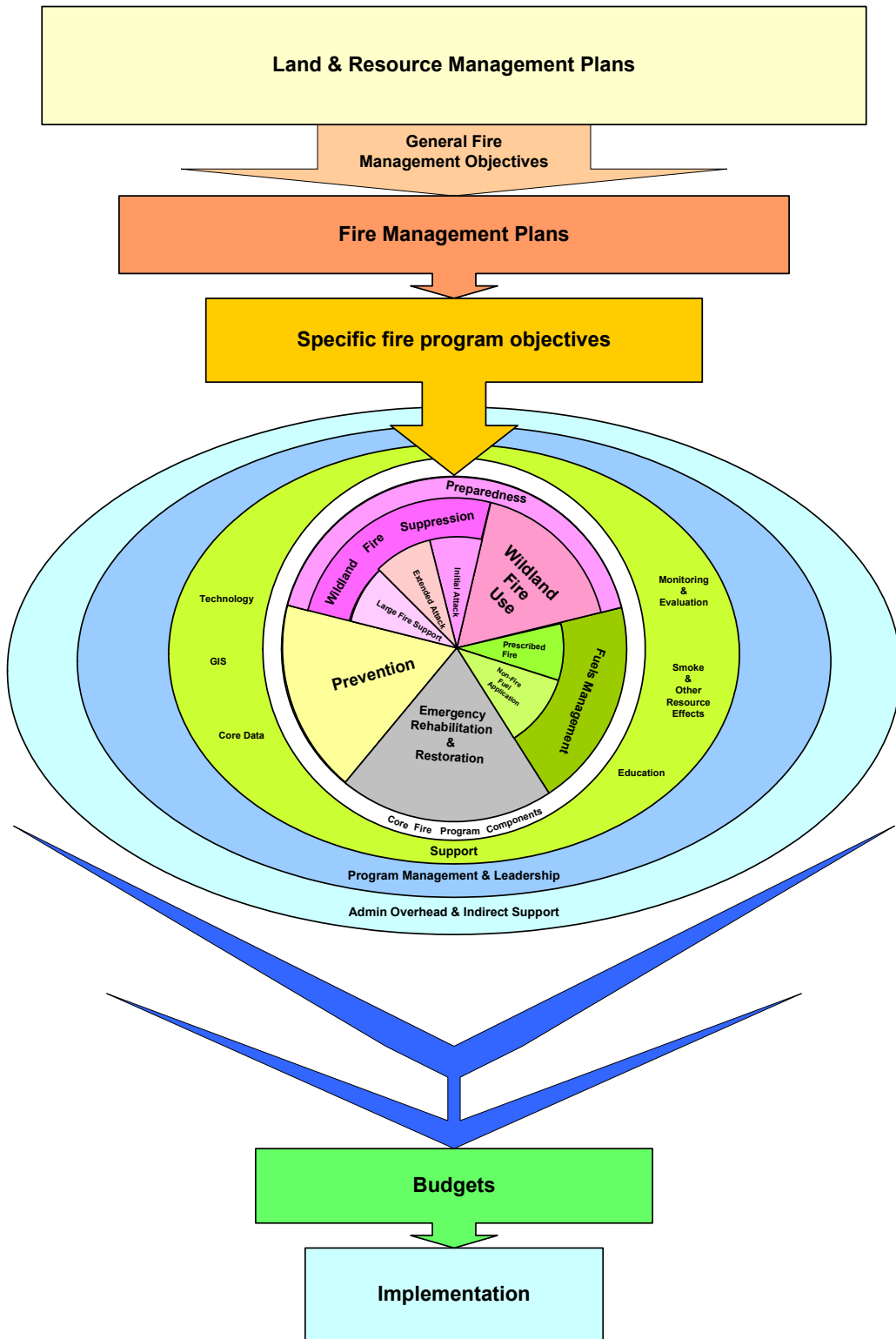


Figure 2: Scope of the Fire Program Analysis - Preparedness Module

