

Using the Open Archives Initiative - Object Reuse and Exchange (OAI-ORE) to Support e-Science

Making the Web Work for e-Science

December 8, 2008

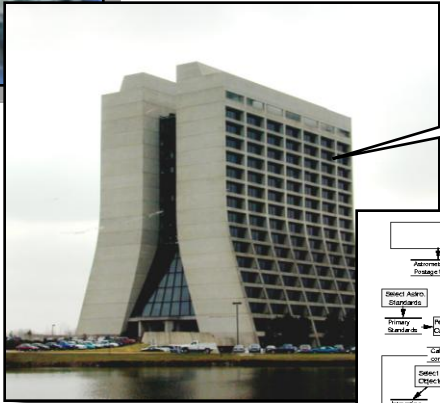
Sayeed Choudhury

Sheridan Libraries, Johns Hopkins

Data Flow (Levels of Data)

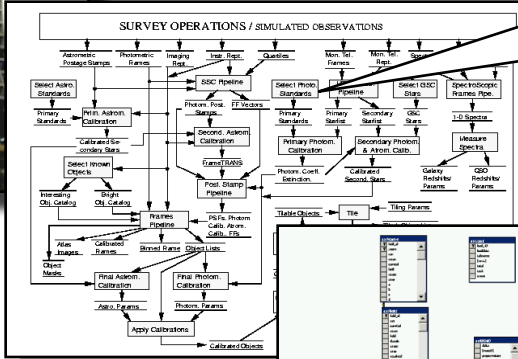


Pixel data collected by telescope

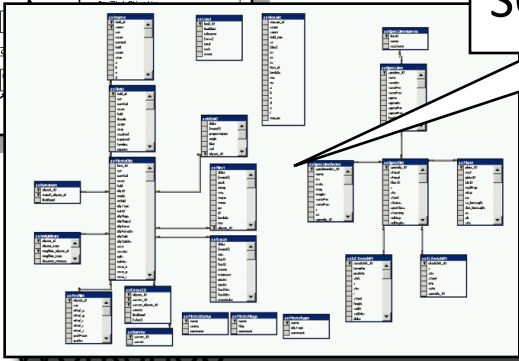


Sent to Fermilab for processing

Beowulf Cluster produces catalog



Loaded in a SQL database



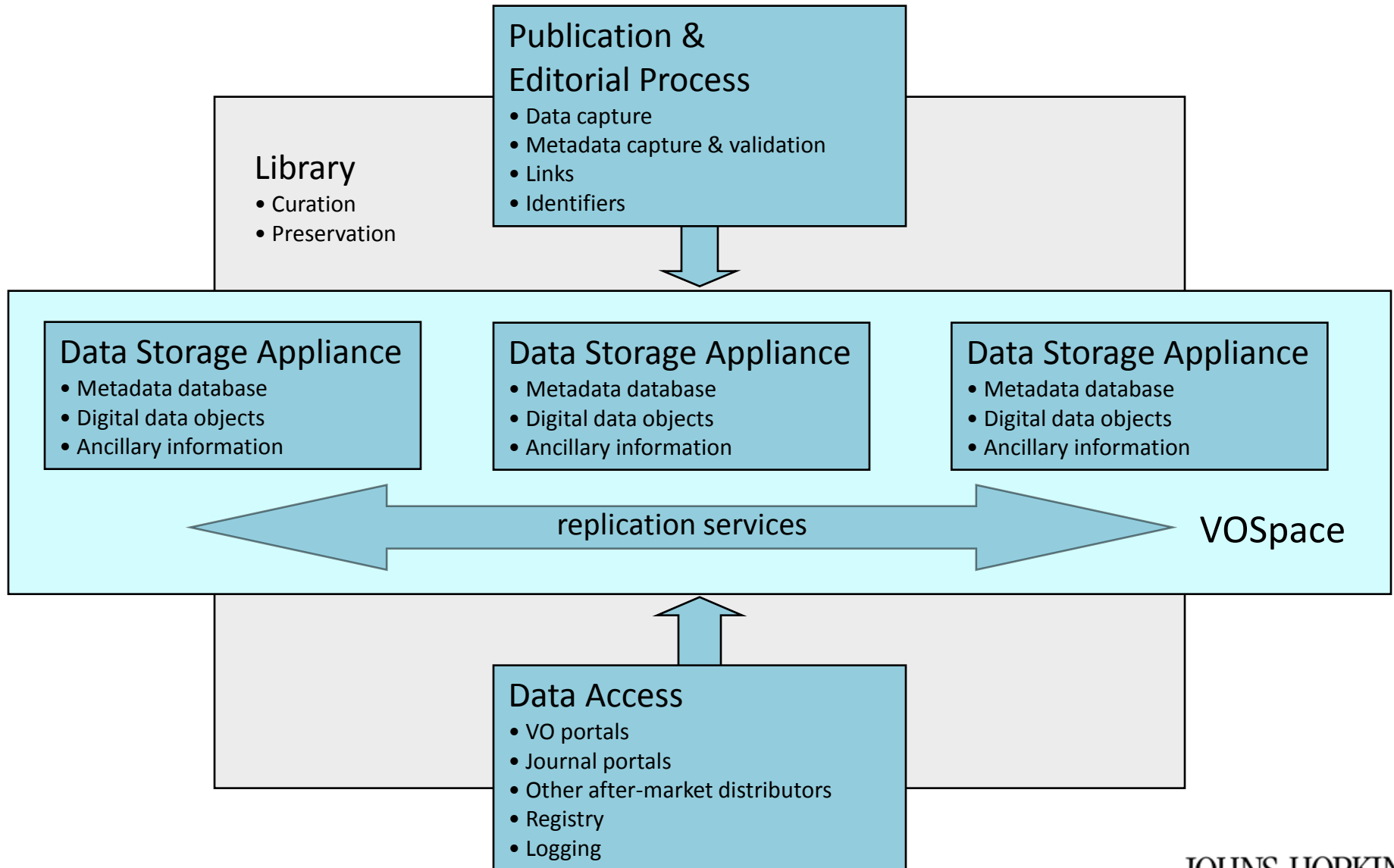
Data curation problem

- Research communities publish peer-reviewed journal papers that describe highly processed data.
- Long-term preservation and curation systems for digital journal content, *including the digital data presented only graphically*, are not currently in place.
- The research cannot be verified and the results cannot be easily compared to other data in order to broaden impact.
- Public funds invested in scientific research do not have maximum return on investment. Essential legacy datasets may be lost.

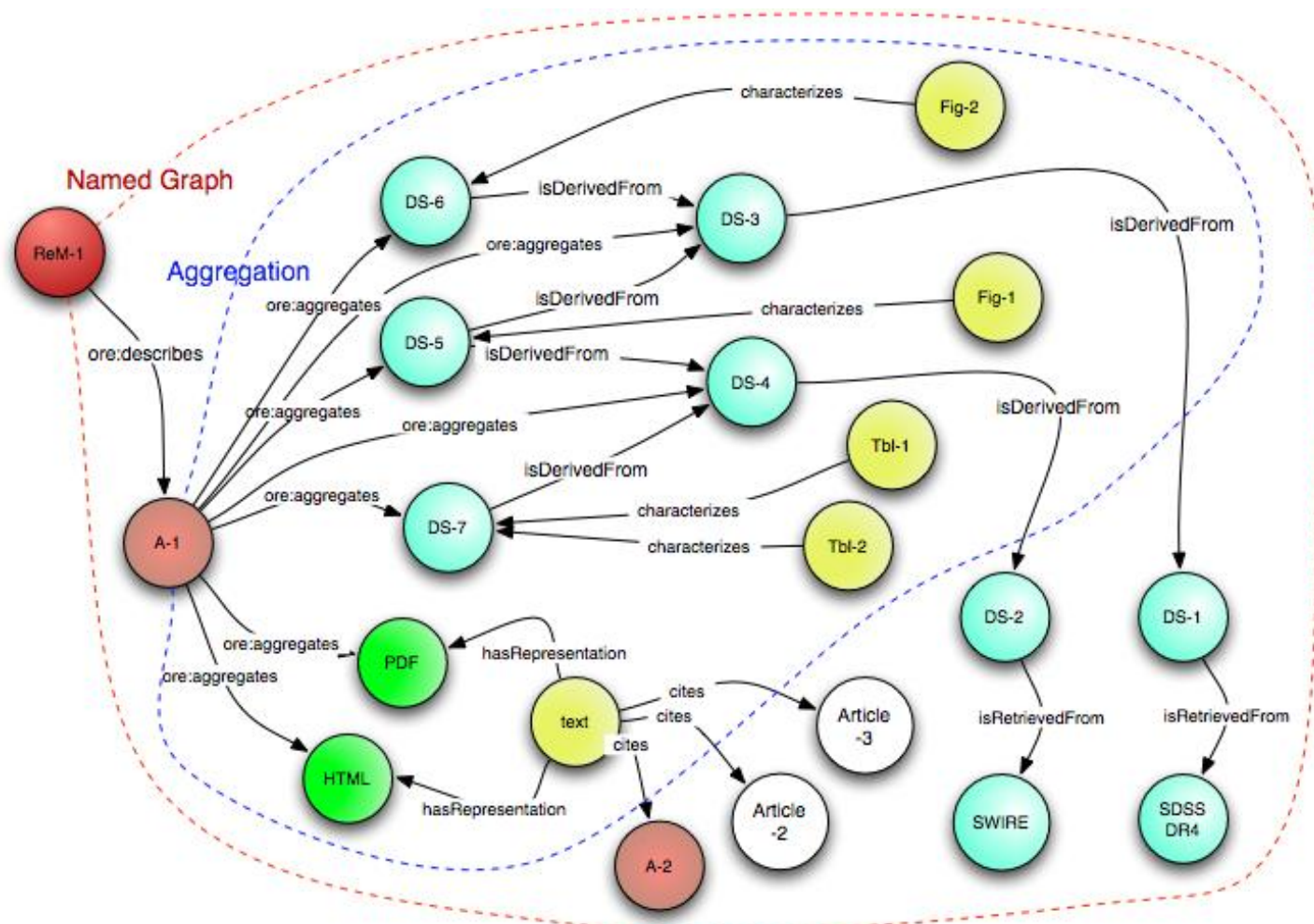
Approach

- Integrate digital data management into the publication process (data capture, review, metadata tagging and validation, storage).
- Exploit emerging information technology standards for managing distributed data collections, including digital journals.
- Provide multiple access methods to digital data to maximize visibility and re-use.
- Exploit information management and curation experience in the university libraries and build on long-term institutional commitments to preservation.

Framework



Open Archives Initiative – Object Reuse and Exchange (OAI-ORE)



Four Key Thoughts

- Data are a new form of publication
- Opportunity to capture entire research process, not only final product
- Data curation as part of scientific workflow and not an act unto itself
- Data curation may depend on nature of data types, practices, uses...which vary by discipline

Acknowledgments

Funding from the Institute of Museum and Library
Services and Microsoft

Tim DiLauro, Bob Hanisch, David Reynolds, Alex
Szalay

sayeed@jhu.edu