

## WiFi Internet Access Connection Procedure

### Mac OS X

The library has provided wireless network service to connect your personal laptop to the World Wide Web while at your public library. All you need is a laptop, wireless adapter and web browser. There are two steps that you will need to follow in order to connect your wireless device to the library's wireless network.

Please be aware that this is not a secure network. It may be possible for personal data to be lost, damaged, or stolen while connected to the wireless network. Please refer to the library's Internet Use Policy.

#### **STEP 1:** Setup wireless network

Make sure that your **AirPort card** or **external PC card** is installed properly per the manufacturer's instructions. In the case of an **external PC card** for a **non-AirPort** capable Mac OS laptop, make sure that the **PC card** is firmly inserted into the **PC card slot**.

**Special Note:** *If you are using a card in a non-AirPort capable laptop, refer to the manufacturer's driver instructions for installation and configuration, as this documentation refers only to computers that are AirPort-capable.*

**Mac OS X** includes the drivers that are necessary to use **AirPort** for network connectivity. All that need be done is select an **active wireless network** and make sure

**Network** settings are correct for the wireless network.

#### **Select a wireless network:**

1. Using either the AirPort Menu or the Internet Connect application, you can select a wireless network that is in range. If AirPort is off, you will need to select "**Turn Airport On**" before you can proceed. AirPort Menu: Internet Connect Application:
2. Select the wireless network from the list of available networks.
3. Next, choose **System Preferences** from the Apple menu. Once the application is started, select **Network**. Click on the **TCP/IP** tab.
4. Make sure that the **Show:** menu is set to **AirPort**, and that the **Configure** menu in the **TCP/IP** tab is set to **Using DHCP**.

*If AirPort doesn't appear in the **Show** menu, choose **Active Network Ports***  
and

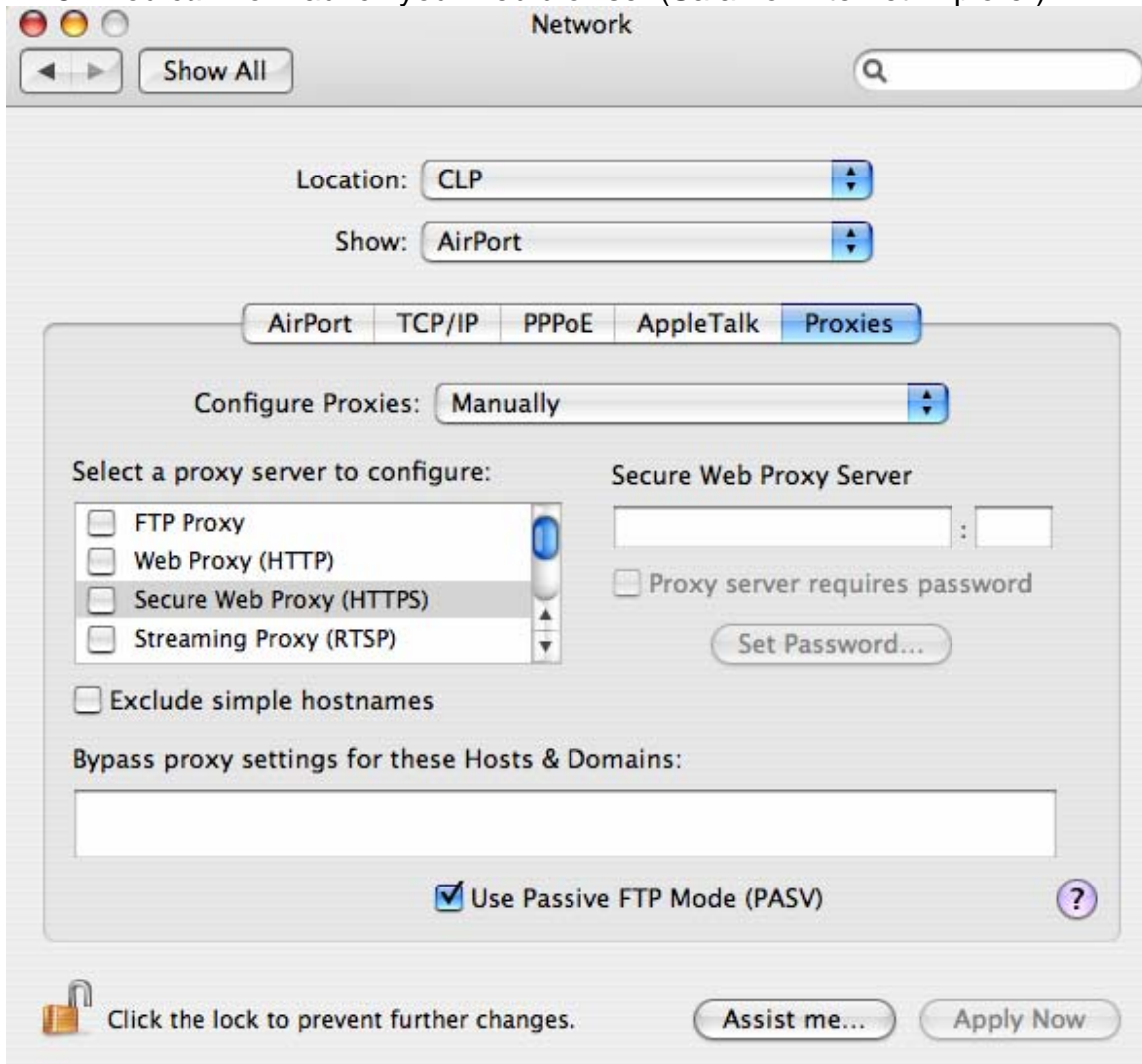
*Activate Airport. Then choose **Airport** from the **Show menu**.*

- 5 Click the **Apply Now** button at the bottom of the panel to save the changes you just made and quit the **System Preferences** application.

## STEP 2: Setup browser proxy settings

All OS X web browsers take their web proxy settings from the OS X Network Preferences. To configure the Network Preferences to use the web proxy server follow these steps:

1. Click on the **Apple** icon and go to **System Preferences**.
2. Double click on the **Network** icon.
3. Use the drop down arrow under show to click on **AirPort**.
4. Click on **Proxies** from the horizontal tab bar.
5. Verify "Configure Proxies:" is set to **Manually**
6. Make sure **No settings are checked**.
7. Click **Apply Now** to exit out of the Network Box
8. You can now launch your web browser (Safari or Internet Explorer).



WiFi Internet Access Connection Procedure  
Revised 8/16/07

---

**NOTE:** If you have installed a Personal Firewall System (PFS) you need to be sure that your PFS is not blocking Internet Access. You may need to authorize access while you are using the connection. Please refer to your vendor's documentation for instructions on how to do this.