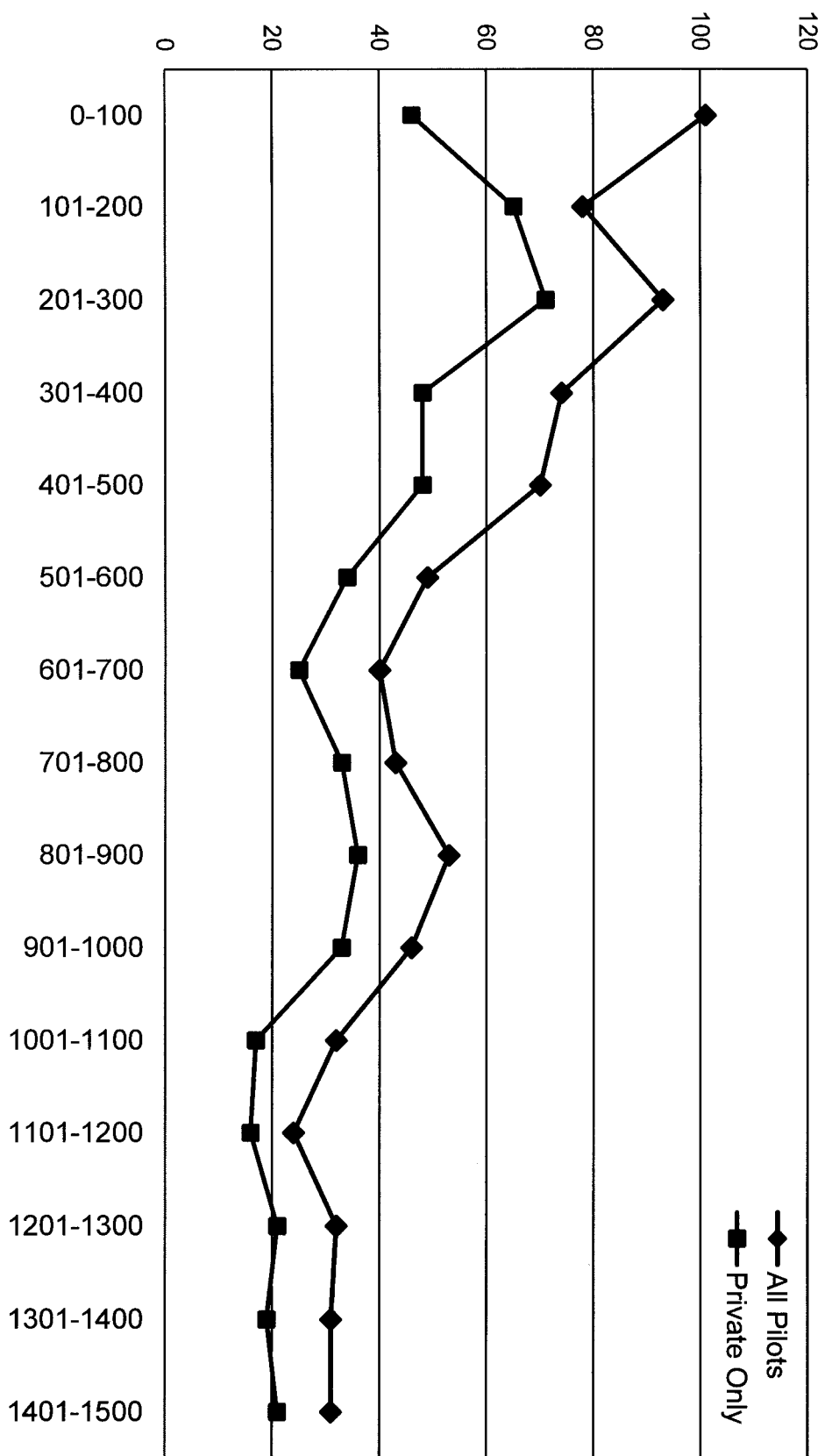


Fatal Accidents vs. Total Time

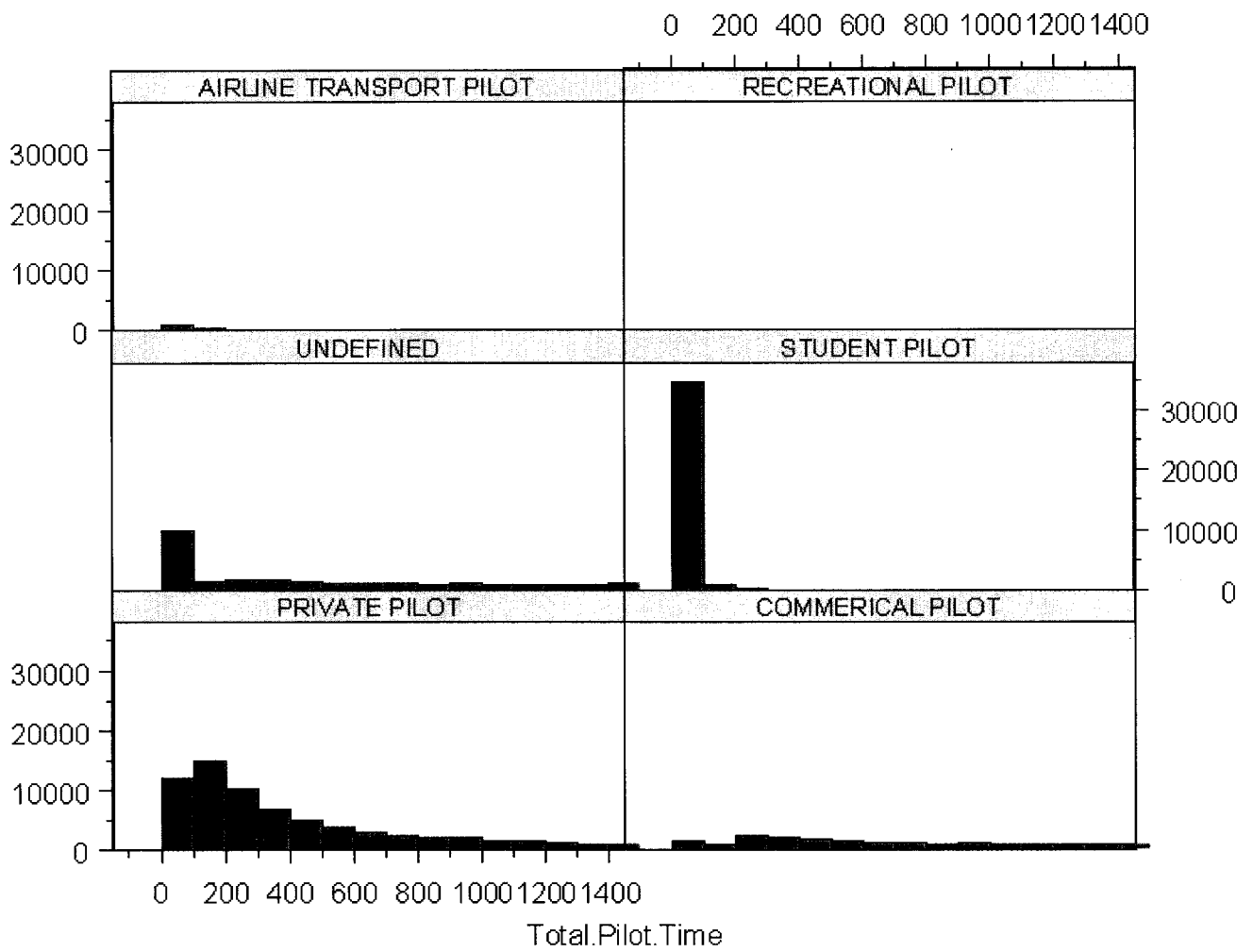


**Fatal Accidents by Hours Flown  
2000-2004**

	All Pilots	Private Only
0-100	101	46
101-200	78	65
201-300	93	71
301-400	74	48
401-500	70	48
501-600	49	34
601-700	40	25
701-800	43	33
801-900	53	36
901-1000	46	33
1001-1100	32	17
1101-1200	24	16
1201-1300	32	21
1301-1400	31	19
1401-1500	31	21

<b>Criteria:</b>
2000-2004
Part 91
Airplanes and Ultralights
Fatal Accidents

**Histogram of Pilot Counts for Total Pilot Time in 2005 Limited to 1500 hours**



# Histogram of Counts of Pilot Total Flight Time 2005

153507 Pilots After Limiting to 1500 TFT

