

Spring Issue 2006
Volume 5 - Issue 4

NER'eastah

Newsletter of the New England Regional Medical Library

In This Issue:

- [Home](#)
- [ILL Advised](#)
- [Inside Outreach](#)
- [Tech Time](#)
- [Chic Chat](#)
- [Announcements](#)
- [Links](#)

See What's Happening In The New England Region !

- [Ill Advised](#)
- [Birthday\(DOCLINE is 21\)](#)
- [All Things Must Pass](#)
- [Please, Please Me](#)
- [With a Little Help From My Friends](#)
- [Any Time At All](#)
- [We Can Work It Out](#)
- [There's A Place](#)
- [Hello Goodbye](#)
- [Help!](#)
- [Inside OutReach](#)
- [Endings and Beginings](#)
- [Tech Time](#)
- [NN/LM NER Web Site](#)
- [Chic Chat](#)
- [NIH MedlinePlus Magazine](#)
- [On The Road Wtih CHIC](#)
- [Announcements](#)
- [The Last Five Years](#)
- [NNLM-NER Welcomes A New Colleague](#)
- [Links](#)



[NLM](#) | [NN/LM](#) | [NER](#)

Comments to:
Rebecca.Zenaro@umassmed.edu

[University of Massachusetts Medical School](#)

222 Maple Avenue Shrewsbury, MA 01545

Phone: 800-338-7657

508-856-5979

Fax: 508-856-5977

In This Issue:

- [Home](#)
- [ILL Advised](#)
- [Inside Outreach](#)
- [Tech Time](#)
- [Chic Chat](#)
- [Announcements](#)
- [Links](#)



ILL ADVISED

- [Birthday \(you say it's your birthday?\)](#)
- Free Tugger wallpaper
- [All Things Must Pass](#)
- DOCLINE® routing table authorization
- [Please, Please Me](#)
- Important DOCLINE reminder
- [With a Little Help From My Friends](#)
- LinkOut providers offer upload service
- [Any Time At All](#)
- Steps to test display of LinkOut icons
- [We Can Work It Out](#)
- Schedule a LinkOut workshop
- [There's a Place](#)
- An advocacy service for hospital libraries
- [Hello Goodbye](#)
- Welcoming NER's *newest*
- [Help!](#)

-Got questions? We got answers.



BIRTHDAY (you say it's your birthday?)

- Free Tugger wallpaper

Thanks to all NER members who have sent their well wishes on DOCLINE's 21st birthday back in March.

For those of you who would like to carry away a memento of this year's celebration, feel free to download Tugger wallpaper to your desktop (in his birthday cap no less!) -

http://www.nlm.nih.gov/docline/docline_wallpaper.html





ALL THINGS MUST PASS

- DOCLINE® routing table authorization

With the release of DOCLINE 2.7 into production on March 28, we mailed out to the regional list some "Suggested Routing Table Guidelines" (see below).

These guidelines will help in deciding what changes, if any, should be made to your Routing Table.

SUGGESTED ROUTING TABLE GUIDELINES

1. Continue to dedicate individual libraries (members of local and state consortia) to lower cells (#1-2-3.)
2. Continue to dedicate individual libraries considered as "favorite lenders" (even if they're part of Freeshare) to lower cells (#1-2-3.)
3. If you decide to place a library group (BHSL, Freeshare, etc.) within a cell, NLM recommends placing that group in a cell all by itself -OR- "with individual libraries that can be expected to be treated equally by the routing algorithm."
4. When placing a group within a cell, please keep in mind that the DOCLINE program will match (on random selection) the first 20 potential lenders that meet criteria for a given request (title, year, delivery methods, etc.)
5. When placing a group within a cell, consider middle (#4-5-6) or higher (#7-8-9) cells.

PLEASE, PLEASE ME

- IMPORTANT REMINDER!

Once you've completed changes to your Routing Table, "please, please me" by remembering to click **REQUEST APPROVAL** on the Edit Routing Table screen (found under DOCLINE Options within the Institution Record.)

Some DOCLINE users have made changes to their Routing Table, clicked on **SAVE**, but have forgotten to take that third and final step by clicking **REQUEST APPROVAL**. Proposed changes must be approved by your DOCLINE Coordinator before they get sent on to production.



WITH A LITTLE HELP FROM MY FRIENDS

linkOut providers offer upload service

If you subscribe to either EBSCO or ProQuest for electronic journal content, these two aggregators are now uploading subscription information to LinkOut on behalf of their subscribers.

Please take advantage of this service if it is made available to you. It will save A LOT of time in managing holdings information.

If your aggregator(s) *don't* provide this service, please encourage them to do so. You may find this hard to believe, but requests from (library) customers *do* go heeded!

Also, please note that when a provider uploads holdings on behalf of the library, those holdings will not appear in the LinkOut Holdings Submission Utility.

If you have questions or concerns, please contact:

Mark Goldstein, NN/LM NER
 LinkOut Representative
 508-856-5964
mark.goldstein@umassmed.edu



ANY TIME AT ALL

-and you LinkOut icons should appear service

Okay - so you've completed:

- (a.) registration with NCBI's LinkOut for Libraries program;
- (b.) entry of your full-text electronic holdings via the Submission utility; and
- (c.) uploading your institutional icon.

Now you can check to see if your links are in place. There are 7 quick steps to verifying display of your full-text icons (see below):

Go to the PubMed Home Page:

<http://www.ncbi.nlm.nih.gov/entrez/query.fcgi>

2. Enter "special URL" in Address bar:

<http://www.ncbi.nlm.nih.gov/entrez/query.fcgi?holding={xxxxxxlib}>

where "**xxxxxxlib**" is your User ID provided during LinkOut registration

3. Click **RETURN**

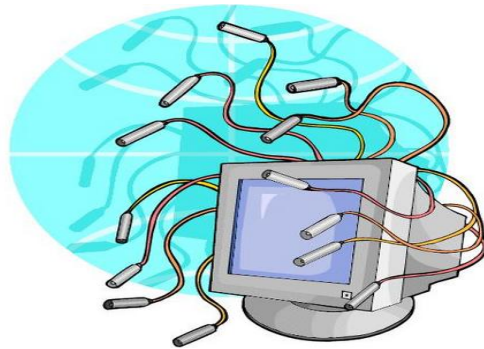
4. Enter in the PubMed Search box: **loprovmauriglib [filter]**

5. Click **GO**

6. Select "Abstract" in the drop-down box (default is on "Summary")

7. Click **DISPLAY**

Please direct further questions or comments to NCBI: lib-linkout@ncbi.nlm.nih.gov.



WE CAN WORK IT OUT

-with a LinkOut workshop

We conducted several LinkOut workshops back in March -- one that took place in Boston and one in Springfield. The purpose of the workshops is to provide libraries registered for the LinkOut program the opportunity to work "away from the office", to avoid interruptions and distractions - in other words - to get the task done. Participants came to the workshops prepared with: their individual User ID and Password to the LinkOut Submission Utility; a paper copy of their complete electronic holdings; and copies of their institutional LinkOut icons (stored on a floppy diskette, flash disk or CD) to be uploaded to the server in Bethesda.

If you'd like to have a LinkOut workshop held in your area, please contact your regional LinkOut Representative, Mark Goldstein at 508-856-5964 -or- send him an email: mark.goldstein@umassmed.edu.

THERE'S A PLACE (where you can go)

-an advocacy service for hospital libraries

- Are you just arriving to your institution as the new librarian?
- Are you expecting a reduction in staff, hours, services, or space?
- Are they organizing a move of the library within your institution?
- Are you leaving the library (for a new job, retirement, etc.)? hoping the institution hires a suitable replacement?
- Just got word that your library will be going through a consolidation or merger?
- Are rumors circulating about eliminating the library entirely?
- Has your institution already announced that it's closing its doors?

If you responded to any of the questions above in the affirmative, please contact Mark for a consultation over what the Regional Medical Library can provide you in the way of an appropriately measured response.

As mentioned in this column (from earlier issues of the newsletter), the Hospital Library Subcommittee of the RAC (the Regional Advisory Council of the NER) has just completed two major projects - an **Orientation Packet** (for new medical librarians in the region) and an **Advocacy Toolkit** (ways & means to improve visibility and support for hospital libraries.) Both projects have just been launched and are currently being pilot tested. Our period for testing will extend from May 1 through September 30, 2006. Orientation packets will be sent out on request.

We're currently seeking libraries to work with us to test and improve the various components of the toolkit, so please contact Mark if you'd like to have a talk about your hospital library - you're really not alone!

Mark Goldstein, *NN/LM NER, Network Coordinator*, **508-856-5964**
mark.goldstein@umassmed.edu



HELLO, GOODBYE

-welcoming the NER's Newest

University of Vermont-Bailey/Howe Library	VTUBVQ
<i>(No Longer DOCLINE Participant; wil remain Affiliate Member)</i>	
Holden Health Career Training Center, Nashua, NH	NHUKWY
<i>(New DDOCLNE Participant; joined as new Full Member)</i>	



HELP!

-I need somebody! Not just anybody!

Got questions? We got answers.

Contact Mark at **508-856-5964** - or mark.goldstein@umassmed.edu

[NLM](#) | [NN/LM](#) | [NER](#)

Comments to:
Rebecca.Zenaro@umassmed.edu

[University of Massachusetts Medical School](#)

222 Maple Avenue Shrewsbury, MA 01545

Phone: 800-338-7657

508-856-5979

Fax: 508-856-5977

In This Issue:

- [Home](#)
- [ILL Advised](#)
- [Inside Outreach](#)
- [Tech Time](#)
- [Chic Chat](#)
- [Announcements](#)
- [Links](#)

**INside OUTreach****Endings and Beginnings**

It's the end of the first contract period for the NER and the beginning of the second. Endings and beginnings make me think about what's happened in the last five years. I became a part of this group in October 2001. I remember being booked on a flight from Chicago to Boston to look for housing on September 13, 2001. And, as we all know now, that flight never took off because all flights were grounded in the aftermath of 9-11. We drove from Chicago to Worcester, eerily aware that there were no planes in the air, listening to National Public Radio all the way, wanting information about the disaster and thinking about the distance from the Midwest to this new job and wondering if this was a step too far. But the choice was made and, eventually, the move to central MA was made, too.

Those first few months were wonderful and horrible as all major changes can be. It was marvelous being in New England during autumn - there's no place quite as beautiful. It was awful being told that the day after I moved I had to be at the airport in Hartford and catch a plane to Bethesda, Maryland to attend orientation at the National Library of Medicine. I couldn't find my way across Worcester and back let alone Hartford, CT! I must have whined a lot about that because car service was arranged to take me to the airport. Later, my colleagues laughed because the car service cost more than the airfare to Bethesda. That never happened again (the car service, I mean). And then, it was shocking to realize six months later that I could find my way from here to almost anywhere in New England more easily than I could find my way around Worcester. (I'm getting better at the Worcester part.) And I've learned about rotaries and the strange New England custom of putting street signs only on the intersecting streets and I've learned how not to panic when I get lost.

As Outreach Coordinator, a good portion of my work involves teaching PubMed and other NLM databases (TOXNET, ClinicalTrials.gov, etc.) to interested parties around the region. The first real trip I made to teach PubMed was what I now think of as the "3B" trip: Biddeford, Brunswick, and Bangor. I was new at this and it showed. For a couple of years, I worried that no one in Maine would ever invite me back to do any sort of presentation. But, I've learned and I've improved. And the good folks in Maine have looked kindly on me and offered me additional opportunities - for which I am grateful.

I've done PubMed presentations in hospitals, in libraries, in schools, in businesses, and in rehab centers. My audiences have been librarians of all types (including library school students), nurses, physicians,

physical therapists, drug company representatives, health educators, public health workers, health care consultants, pharmacy students, teachers, environmental health consultants, members of the general public, and pretty much anyone who asked for training.

I've met all sorts of wonderful people.

I've stayed in hotels and B & Bs and inns - some of the nicest places in New England and some with, well, character. I've arrived at places in the dead of night and way too darn early in the morning and all hours in between.

I've been to all six states and seen more of New England than I ever did of the Midwest when I lived there. I've done 187 classes/presentations. I've driven 24,710 miles on the road in this job - and that's just the mileage to and from the teaching events, not the exhibiting we do or attending meetings or any of the other things we sometimes do. My shortest trip was to Lamar Soutter Library to teach PubMed. The longest was the 1,050 mile trip in September 2003 when I taught at McGill University in Montreal followed directly by five teaching sessions in Maine.

I've often told people that I have the greatest job. I do. But, it wouldn't be possible without you.

Thank you to all of you who have invited me to participate in your conferences and your meetings, who invite me when a speaker is needed for Grand Rounds, who call or email when PubMed would make a nice addition to an agenda. Without you, my work would be more difficult and much less interesting. You have my gratitude.

Thank you to all of you who have been participants in one or more of the classes I've taught. There have been 2,740 of you during this first contract period. You know who you are. I appreciate your kind attention, your questions, your comments, and your willingness to fill out evaluation forms! I have learned a lot from you. Thank you.

It's been a great, great adventure. And now, I have to go pack up the car for another trip.



Donna Berryman, Outreach Coordinator
Donna.Berryman@umassmed.edu

[NLM](#) | [NN/LM](#) | [NER](#)

Comments to:
Rebecca.Zenaro@umassmed.edu

[University of Massachusetts Medical School](#)

222 Maple Avenue Shrewsbury, MA 01545

Phone: 800-338-7657

508-856-5979

Fax: 508-856-5977

In This Issue:

- [Home](#)
- [ILL Advised](#)
- [Inside Outreach](#)
- [Tech Time](#)
- [Chic Chat](#)
- [Announcements](#)
- [Links](#)



Tech Time

NN/LM NER Web Site

The NN/LM NER Web site is an important tool for communicating with you, our member libraries. As announced earlier this month, a new look and feel is unfolding for the National Network of Libraries of Medicine (<http://nnlm.gov/>) Web site and each regional Web sites. The NER Web site is available at (<http://nnlm.gov/ner>).

The changes are based on usability testing of the national site and several regional sites. Some of you may have participated either in the first or second phase of testing. An important outcome of this review is that now there is a common look-and-feel between all the sites. This helps reinforce the relationship between each of the individual regions and the national site.

The Main Section Tabs are pretty much consistent across all regions and the national site:

[Member Services](#): includes information on the benefits of network membership, how to apply for membership, and explanation of the different types of Members—Full and Affiliate, responsibilities of membership, and information on DOCLINE, SERHOLD, and Loansome Doc

[Provide Outreach](#): Contains resources or links to resources that support Network Members and RML staff members in providing or coordinating outreach efforts

[Public Health Resources](#): This category is unique to the New England Region. The section includes information related to the Lamar Soutter Library Evidence-Based Public Health Project, training on Public Health Resources, and links to selected national and state public health information resources.

[Funding](#): Includes information related to funding opportunities for outreach projects, exhibits, and summaries of funded projects.

[Training and Educational Opportunities](#): TIncludes content related to classes, educational opportunities, exhibits, training sessions, and related meetings.

[Resource Sharing and Document Delivery](#): Contains contents related to document delivery and other resources that network members commonly use, including, but not limited to: Interlibrary Loan

information, Loansome Doc Service, LinkOut, SERHold, and EFTS.

There not only is there a different look to the NER Web site, but some of the services you rely on may have moved to new addresses. This revision is a huge change in the architecture of our information and we anticipate that you may run into some things we haven't fully resolved yet. We know we aren't done, and we plan to continue refining our webpages over time.

Please review the site and feel free so sent me any comments. I am looking forward to heading from you.

Penny

Please feel free to contact me at penny.glassman@umassmed.edu or 508-856-5974 if you have any questions.

*Penny Glassman
Technology Coordinator
New England Region.*

[NLM](#) | [NN/LM](#) | [NER](#)

[University of Massachusetts Medical School](#)

222 Maple Avenue Shrewsbury, MA 01545

Phone: 800-338-7657

508-856-5979

Fax: 508-856-5977

Comments to:

Rebecca.Zenaro@umassmed.edu

In This Issue:

- [Home](#)
- [ILL Advised](#)
- [Inside Outreach](#)
- [Tech Time](#)
- [Chic Chat](#)
- [Announcements](#)
- [Links](#)

CHIC Chat:**CONSUMER HEALTH INFORMATION CHAT**Author: Michelle Eberle, michelle.eberle@umassmed.edu**On the Road with the CHIC**

From Bangor, Maine to the Greenwich, Connecticut, as CHIC or Consumer Health Information Coordinator I have traveled all throughout New England. As the former medical librarian at the Somerville Hospital of the Cambridge Health Alliance, I was not accustomed to daily commutes of up to four hours. If you asked me two and a half years ago, "What is the easiest route to Orono, Maine?" Or, "How do you get to Whately, Massachusetts?" These are questions I could not answer. Now of course, it is not uncommon for me to commute to Concord, New Hampshire or Meriden, CT in a day for a class.

Since the fall of 2003, I have served as the liaison to Maine, New Hampshire and Vermont medical libraries. I have enjoyed getting to know the cultures of HSLIC and HSNH-VT. Of course, it was interesting to see how each organization has its own unique composition of committees and meeting style. The HSNH-VT meetings took me to the White River Junction and the HSLIC meetings to Bangor, Orono, and Farmington.

In my role as Consumer Health Information Coordinator, one of the main initiatives of the past five years has been outreach to public libraries. My approach to reach public librarians from the widest geographic area has been to present classes at the regional and state library systems. Through the class offerings, the NN/LM-NER was able to cultivate relationships with administrators and education coordinators at the regional and state library systems. These public library leaders attended our 2005 Regional Advisory Board. The medical librarians and public librarians on the Regional Advisory Board shared stories and remarked on commonalities among their current experiences in the library field.

A new initiative for the next five years is outreach to CBO's. You may ask, "What is a CBO?" CBO stands for community based organization. Funding will also be available for CBO outreach. The NN/LM-NER hopes to reach senior centers, home health care agencies and visiting nurse associations to educate about NLM resources in the next contract. I am interested to hear how libraries are collaborating with CBOs. If you have a CBO story, please share it with me by e-mailing me at michelle.eberle@umassmed.edu.

By Michelle Eberle, Consumer Health Information Coordinator

Michelle.Eberle@umassmed.edu, Consumer Health Information Coordinator

NIH MedlinePlus Magazine



Washington, D.C - May 8, 2006) - Stating that consumers can now have access to "information that comes directly from the world's leading medical and health research organization," the Honorable Paul Rogers, former member of Congress and Chairman of The Friends of the National Library of Medicine, today announced the launch of NIH MedlinePlus Magazine. This quarterly publication will be distributed free of charge to patients and their families in the waiting rooms of selected practicing physicians across the nation.

"The American people have made a long-term investment in the crucial medical research being carried on by NIH," said NIH Director Elias A. Zerhouni, M.D. "NIH MedlinePlus magazine is an important way to make this research and healthcare information even more accessible and useful to health professionals and patients alike. This magazine will provide the public with a gold standard of reliable, up-to-date health information," he continued, "in a very user-friendly format that can act as a springboard to the Web site: MedlinePlus.gov."

"NIH MedlinePlus Magazine, like the Web site, is completely free and has no advertising," commented Donald A.B. Lindberg, MD, Director of the National Library of Medicine.

"The magazine sorts through the clutter of competing health claims that are out there to provide reliable information that can be used by the public. The magazine is based on the NIH Web resource - <http://medlineplus.gov> - with its many links to consumer-friendly information about diseases and health conditions, prescription and over-the-counter drugs and supplements, 27,000 clinical trials, and much more," said Lindberg.

Each issue of NIH MedlinePlus Magazine will link readers with celebrities and other individuals who share their own health-related experiences and discuss how these issues may affect others. The premiere issue features an in-depth MedlinePlus interview with athlete/Tour de France bicycle race winner Lance Armstrong, who talks about his own experience with life-threatening cancer.

NIH MedlinePlus Magazine is organized to help readers learn more about specific health conditions and offer the latest advice on prevention, diagnosis, treatment and research findings. Regular features will include the latest information on how to stay healthy for a lifetime and will also profile some of the most fascinating people - from laboratory scientists and public figures to patients who are making a difference in the search for medical advances.

NN/LM network members will receive complimentary copies of each issue of NIH MedlinePlus Magazine. A pdf version of the magazine is also available at: .
Press release from the Friends of the National Library of Medicine dated May 8, 2006




Director's comments Podcast

Podcasts seem to be more and more popular. Director of the National Library of Medicine, Donald Lindberg has jumped on this bandwagon. His "Director's comments" podcast is available both on the MedlinePlus homepage and by subscription to iTunes. Of course the podcast is free. A text version of the transcript is also available.








MedlinePlus: NLM Director's Comments

MedlinePlus proudly presents a weekly update by Donald A.B. Lindberg, M.D., Director of the National Library of Medicine, highlighting new materials on MedlinePlus.

 [Subscribe to the MedlinePlus: NLM Director's Comments](#) Clicking on this link will open iTunes and take you to the MedlinePlus: NLM Director's Comments page, where you can subscribe to the free podcast. An iTunes subscription to NLM Director's comments works only if you are using the current version of iTunes' client software on your computer.

You can use the following URL if you're using a podcast software client that requires you to cut and paste the URL to subscribe:
<http://www.nlm.nih.gov/medlineplus/podcast/nlmpcast.rss>

To listen to Dr. Lindberg's comments, click on the  button. To see the script use the transcript link.

TITLE	DATE	AUDIO	TEXT VERSION
Insect Bites; Undiagnosed Diabetes	June 05 2006		Transcript
Flu Vaccine; Body Maps	May 30 2006		Transcript
Bird Flu; Detached Retina	May 22 2006		Transcript
Eye Infections; Genetic Testing; NIH MedlinePlus Magazine	May 15 2006		Transcript



MedlinePlus adds navigational images on health topics pages

The health topics pages have been enhanced to include navigational images of the body which link to corresponding health topic pages. The new health topics page is available at: <http://www.nlm.nih.gov/medlineplus/healthtopics.html>.

The new health topics page groups topics by body location/ systems, disorders, diagnosis and therapy, demographic groups, and health and wellness. Of course, there is still an alphabetical search and the search box. By clicking on a specific body part in the body location/ systems, a related list of health topics will appear.

Health Topics

Find your topic by first letter:

[A](#) [B](#) [C](#) [D](#) [E](#) [F](#) [G](#) [H](#) [I](#) [J](#) [K](#) [L](#) [M](#) [N](#) [O](#) [P](#) [Q](#) [R](#) [S](#) [T](#) [U](#) [V](#) [W](#) [XYZ](#) [List of All Topics](#)

Body Location/Systems

-  [Blood, Heart and Circulation](#)
-  [Bones, Joints and Muscles](#)
-  [Brain and Nerves](#)
-  [Digestive System](#)
-  [Ear, Nose and Throat](#)
-  [Endocrine System](#)
-  [Eyes and Vision](#)
-  [Immune System](#)
-  [Kidneys and Urinary System](#)
-  [Lungs and Breathing](#)
-  [Mouth and Teeth](#)
-  [Skin, Hair and Nails](#)
-  [Female Reproductive System](#)
-  [Male Reproductive System](#)

Disorders and Conditions

- [Cancers](#)
- [Genetics/Birth Defects](#)
- [Infections](#)
- [Injuries and Wounds](#)
- [Mental Health and Behavior](#)
- [Metabolic Problems](#)
- [Poisoning, Toxicology, Environmental Health](#)
- [Pregnancy and Reproduction](#)
- [Substance Abuse Problems](#)

Diagnosis and Therapy

- [Complementary and Alternative Therapies](#)
- [Diagnostic Tests](#)
- [Drug Therapy](#)
- [Surgery and Rehabilitation](#)
- [Symptoms](#)
- [Transplantation and Donation](#)

Demographic Groups

- [Child and Teen Health](#)
- [Men's Health](#)
- [Population Groups](#)
- [Seniors' Health](#)
- [Women's Health](#)

Health and Wellness

- [Fitness and Exercise](#)
- [Food and Nutrition](#)
- [Health System](#)
- [Personal Health Issues](#)
- [Safety](#)
- [Sexual Health](#)
- [Social/Family Issues](#)
- [Wellness and Lifestyle](#)

Frequently Requested Topics

Interactive Health Tutorials

Easy to Read

Health



Search MedlinePlus

[About MedlinePlus](#) | [Site Map](#) | [FAQs](#) | [Contact Us](#)

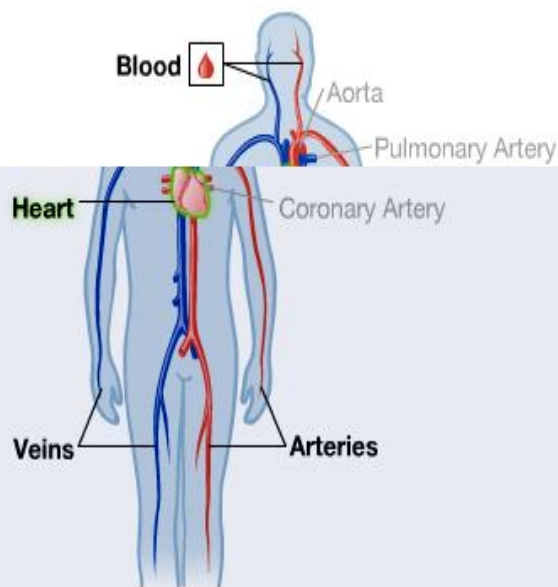
[Home](#) [Health Topics](#) [Drugs & Supplements](#) [Encyclopedia](#) [Dictionary](#) [News](#) [Directories](#) [Other Resources](#)

esp

Blood, Heart and Circulation

[See All Topics](#)

[How to use this page](#)



The Heart

[Back](#)

- [Angina](#)
- [Angioplasty](#)

- [Arrhythmia](#)
- [Cardiomyopathy](#)
- [Congenital Heart Disease](#)
- [Coronary Disease](#)
- [Heart Attack](#)
- [Heart Bypass Surgery](#)
- [Heart Disease in Women](#)
- [Heart Diseases](#)
- [Heart Diseases--Prevention](#)
- [Heart Failure](#)
- [Heart Surgery](#)
- [Heart Transplantation](#)
- [Heart Valve Diseases](#)

and Circulation Topics

For Blood Groups see [Blood and Blood Disorders](#)
[Anemia](#)

Blood, Heart

- [AB](#)
- [Anemia](#)
- [Angina](#)



Released May 2, 2006, the latest Pew Internet & American Life Project report discusses the use of the internet for finding health information. According to the report, consumers are searching the internet with increasing rates for shopping, pursuing hobbies and job related activities. The report charts attitudes about how much the Internet has improved for these purposes versus health information seeking between 2001 and 2005.

The satisfaction level of consumers, particularly "e-caregivers", with information found on the internet when faced with a critical decision about a major illness or health condition is a main finding in this report. The report cites that,

- 36% of e-caregivers said the internet helped them find advice or support from other people.
- 34% of e-caregivers said the internet helped them find professional or expert services.
- 26% of e-caregivers said the internet helped them find information or compare options.

Just 6% of e-caregivers reported getting from the internet either bad information or advice that made their experience more difficult. By comparison, 91% of e-caregivers said that was not a problem for them."

The abstract of the report cites that "Fully 58% of those who found the internet to be crucial or important during a loved one's recent health crisis say the single most important source of information was something they found online."

The report also lists key sources that consumers consult. This list provides librarians with insight into what health topics are vital to consumers. This list includes:

- Health facilities' websites
- Doctors/physicians
- Medical advice and information online
- WebMD.com
- [Finding out] exactly what my condition was
- My medical background and self-knowledge
- Journals through the National Institutes of Health
- Head of a cancer support group
- Went online to get information about medications that could not be mixed together
- [Finding out] about medical condition treatment options
- Information I received from different breast cancer sites; information the women had posted about their experiences
- Support group; families [dealing with] a particular disease
- Medweb to find out what medicines were, what the side effects were, and the dosage that was sufficient
- Researching the surgical process that was going to be taken; heart bypass and valve replacement
- Found out [how to] live with disease
- Arthritis doctors and research on arthritis
- American Cancer Society
- Looking for elderly care options
- Lymphoma Society
- Hospice."

The conclusion of the report summarizes that the range of topics show the significance of the internet as an information and decision making tool for consumers for health care matters. The report shows that while health searching is not constant for consumers, there is growth in the population that finds it a critical resource.

Check out the full report at:http://www.pewinternet.org/PPF/r/183/report_display.asp.

Source:

Madden, Mary and Fox, Susannah. (May 2, 2006) Pew Internet & American Life Project Report, "Finding Answers Online in Sickness and in Health", http://www.pewinternet.org/PPF/r/183/report_display.asp, Retrieved May 31, 2006.

Google Health

On May 10, 2006, Google issued a press release, "New Google Search Technologies Make Information Easier to Discover, Organize and Share". http://www.google.com/press/pressrel/new_tech.html

Of particular note is Google Co-op Beta, which will include Health topics. The National Library of Medicine (NLM) is one of the contributors to the Health topics. Other contributors include the CDC, HON, Harvard Medical School, Mayo Clinic, the University of California San Francisco, and Kaiser Permanente.

Each search may be limited to "health labels" including condition information, drug information, for doctors and information type. The results come from the above listed authoritative sources many of which are from MedlinePlus.

For more information on Google Co-op, <http://www.google.com/coop>.

Health News in Review

Funded by the FIMDM, Foundations for Informed Medical Decision Making, Health News in Review reports the evidence behind the latest health news stories. Health News in Review evaluates health news stories based on the ABC's of health journalism or:

- Accuracy
- Balance
- Completeness

Health news stories are evaluated on a 10 step standardized criteria rating system. The 10 criteria include:

- Novelty of treatment
- Availability of treatment
- Treatment options
- Disease Mongering
- Quality of Evidence
- Quantifying treatment benefits
- Treatment harms
- Treatment costs
- Sources of information
- Relies on press release

Each of these steps is rated satisfactory, unsatisfactory or not applicable with an explanation why and a review of the news headline.

Check out the Health News in Review site at: <http://www.healthnewsreview.org/>.

By Michelle Eberle, Consumer Health Information Coordinator

[NLM](#) | [NN/LM](#) | [NER](#)

Comments to:
Rebecca.Zenaro@umassmed.edu

[University of Massachusetts Medical School](#)

222 Maple Avenue Shrewsbury, MA 01545

Phone: 800-338-7657

508-856-5979

Fax: 508-856-5977

**In This Issue:**

- [Home](#)
- [ILL Advised](#)
- [Inside Outreach](#)
- [Tech Time](#)
- [Chic Chat](#)
- [Announcements](#)
- [Links](#)



NEWS IN MOTION

The Last Five Years

With the announcement to <http://www.nlm.nih.gov/news/rmlcontracts06.html> of the Regional Medical Library contracts for 2006-2011, all of our staff look forward to continue serving as the RML for the National Network of Libraries of Medicine for the New England Region. The last five years have flown by and there is always much energy to feed on from the people in our region. From Calais to Cos Cob NER coordinators have logged countless number of miles to meet and train network members throughout our six-state region.

We'd like to take this opportunity to recap some achievements and numbers to take stock of our region our regional activities...

Here are some figures representing our network members:

NER Network Membership

	CT	MA	ME	NH	RI	VT	TOTAL
Full Members	39	100	50	32	19	12	252
Affiliate Members	48	126	25	22	17	26	264
TOTALS	87	226	75	54	36	38	516

Just to remind you, Affiliate members are libraries like public libraries and other types of libraries that do not participate in DOCLINE. These libraries provide other health information services and they can call upon us for training and other resources we provide.

To support librarians and their use of DOCLINE, Loansome Doc, and LinkOut, Mark has traveled throughout the region for individual or classroom training sessions, these average about 20 visits or sessions a year. We've gone through several revisions of DOCLINE and Loansome Doc, all calling for onsite training sessions done at your request.

With regards to technology, Penny has provided information support for health science library association lists and websites, and assisting members in technology decision-making. Penny has also traversed the region to

bring members seminars on contingency planning, link resolvers, and hardware and software technology trends.

Awards

To support the work of medical libraries, the RML has funded electronic document delivery installations helping member libraries to improve their services. This is part of our mission, to enhance access, and this type of support has gone a long way in improving access to health information for your patrons. More than \$230,000 has been awarded to network members throughout the region.

Awards for course development and sponsorship of programs has allowed network members to design and conduct courses and seminars for diverse audiences on topics like, health statistics, health literacy training, telemedicine, and clinical information systems. Many of these have involved collaborations with your states' medical societies and health foundations.

Awards for short-term outreach to newer audiences were introduced in this contract period as Express Outreach Awards. Libraries and other institutions are able to apply for funding to establish relationships with local community agencies and offer training on health information resources. These awards have supplemented outreach efforts conducted through subcontracts. Express Outreach has proven to be way to entice smaller libraries to do outreach.

Awards to Network Members	Total
EDD/Connectivity	\$236,161
Course Development/Programs/Sponsorship	\$61,376
Express Outreac	\$43,598
Total Awards	\$341,135

Training Activities and Subcontracts

Donna and Michelle have traveled throughout the region to put on 320 training activities over the last five years. Both Donna and Michelle have introduced an array of courses geared towards all types of librarians, health care providers, and the public.

Subcontract projects have conducted health information promotion to communities abroad and health related organizations. Reaching urban and rural populations alike, projects have targeted special populations like the economically disadvantaged, the underserved minority populations, and senior populations. NER has funded over 35 subcontract projects over the last five years.

All of our work in the region involves making health information more available to the people who need it. We will continue to be our members' critical resource for improving information delivery, hearing your concerns, and working together. We look forward to being a source of training on NLM resources and a funding source to expand learning opportunities for librarians and your patrons.



NNLM-NER welcomes Hathy Simpson to the RML staff here in Shrewsbury!

Hathy will be joining us in various but related capacities:

Hathy will serve as the region's Public Health Coordinator for identifying needs and providing services to public health agencies and offices throughout the region.

Hathy will also serve as the project coordinator for the PHPartners.org project. Hathy will be identifying and selecting resources to include in the Partners for Public Health Website.

Many of you have already met Hathy at NAHSL or have attended her presentations at MLA.

Hathy Simpson has worked at the Lamar Soutter Library, University of Massachusetts Medical School, on several projects related to providing information resources to the public health workforce. She was the project coordinator for the Evidence-Based Practice for Public Health Project, a four-year project that was supported by the Centers for Disease Control and Prevention and the Association of Teachers of Preventive Medicine. Hathy's work on this project included identifying public health journals, bibliographic databases, and evidence-based resources for public health practice. The identified resources and continuing education courses on Evidence-Based Public Health are available from the project's Web site at <http://library.umassmed.edu/ebpph>. Hathy's work on the project also included a research project that identified the information needs of public health professionals at the Massachusetts Department of Public Health. The results from the study were presented at the American Public Health Association Annual Meeting and have recently been published in the journal BMC Public Health. Hathy will be the keynote speaker at the 2006 Medical Library Association's Public Health/ Health Administration Section Program, Evidence-based Public Health Librarianship.

Hathy has also worked as the Public Health Outreach Liaison for the New England Collaborative for Public Health Workforce Outreach and Education Project funded by the NN/LM NER. Hathy continues to be the Content Developer for the Partners in Information Access for the Public Workforce Web site. PHPartners is a collaboration of U.S. government agencies, public health organizations and health sciences libraries whose mission is to help the public health workforce find and use information effectively to improve and protect the public's health.

If you have any questions for Hathy or just want to introduce yourself you can reach Hathy at 508-856-2085 or Hathy.Simpson@umassmed.edu

[NLM](#) | [NN/LM](#) | [NER](#)

Comments to:
Rebecca.Zenaro@umassmed.edu

[University of Massachusetts Medical School](#)

222 Maple Avenue Shrewsbury, MA 01545

Phone: 800-338-7657

508-856-5979

Fax: 508-856-5977

Spring Issue 2006
Volume 5 - Issue 4

NER'eastah

Newsletter of the New England Regional Medical Library

In This Issue:

- [Home](#)
- [ILL Advised](#)
- [Inside Outreach](#)
- [Tech Time](#)
- [Chic Chat](#)
- [Announcements](#)
- [Links](#)



LINKS

[Partnering with Community Based Organizations](#)

[Funding Opportunities](#)

[NN/LM Training and Exhibit Schedule](#)

[Classes Offered by the New England Region](#)

[NLM Technical Bulletin](#)

[NLM](#) | [NN/LM](#) | [NER](#)

Comments to:
Rebecca.Zenaro@umassmed.edu

[University of Massachusetts Medical School](#)

222 Maple Avenue Shrewsbury, MA 01545

Phone: 800-338-7657

508-856-5979

Fax: 508-856-5977