

Grant Writing



Denise Juliano-Bult, M.S.W.

National Institute of Mental Health

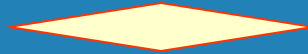
Peggy Murray, M.S.W, A.B.D

National Institute on Alcohol Abuse and Alcoholism

Jerry Flanzer, Ph.D

National Institute on Drug Abuse

Getting Started



Jerry Flanzer

First Steps

- Read the Program Announcement
- Read the PHS 398
- Call a Program Officer



Priority Areas for Institutes

- Special Reports
- PAs and RFAs
- Program Descriptions
- Talk to Program Staff

Types of Grants for 1st Time Applicants

- R03: 2 yr, \$50K/yr, New PI, area or technique
- R21 or R34: 2 or 3 yrs, pilot work in new areas or applications
- B/START: One yr, small, new PI

NIH Website

<http://www.nih.gov/>



R Grants

- Significance
- Approach
- Innovation
- Investigator
- Environment



Keep in Mind....

- The goal is science not:
 - service provision
 - program evaluation
 - advocacy



Your Study Should...

- Fill a gap in literature/knowledge
- Have or lead to “real world” usefulness
- Lead to future research





Think Strategically

- Something you care about
- Something you have a new idea about
- Something you want in your future

Grant Writing



Denise Juliano-Bult

About the Writing....

- Easy to read (prose)
- Easy to follow (organize)
- Clear steps leading to goals (logic)
- Use space efficiently
- Get input from consultants



General Issues

- Supply evidence for all your assertions
- Write for a non-specialist reader
- This is a big project– plan accordingly
- No one writes a grant alone

Specific Aims – 1 page

- What is the problem?

- What do we know?

- What don't we know?



- ★ Why do we want to know it?

Background

- The context of the science
- Basis in Theory
- Conceptual framework & justification
- Your line of inquiry is the best next-step in science

Progress Report

- The project is feasible
- You and your team are capable
 - Experience and training
 - Relevant prior research of individuals
 - Relevant prior collaborative experience

Design & Methods

All steps of the study should:

- Be overviewed in a concise design and/or protocol
- Answer the questions in the specific aims
- Anticipate potential problems in design and how to address
- Contribute to the results

Subject Sample

- Composition: representativeness, women, minorities, children, elderly

- Recruitment, retention, attrition, incentives, tracking



- Data & safety monitoring board or plan

- Consent, confidentiality

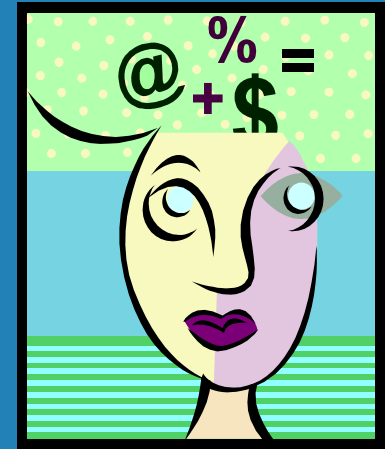
Discuss the Weak Points in Your Plan

It shows that you are:

- thoughtful
- thorough
- complete
- realistic
- planning ahead

Data Management & Analyses

- Provide a data management plan
- Tie each step of the analysis to the aims
- Use analytic methods that are appropriate for the data and the questions



Data Analysis

- A methods expert will be a reviewer
- Therefore, you need a consultant
- Your methods expert should help you develop the application

Summary Statement



Peggy Murray



Content

- Text of three/four primary reviewers
- Score (committee average)
- If scored, summary of discussion
- Percentile, where appropriate
- Name and phone pr program officer
- It does not say if you will be funded.

What Next?

- Whether funded or resubmitting, you must respond to all major concerns
- Your consultants should help you respond



Why Must You Respond?

- If fundable: your written response is part of how we propose funding to the Institute director and Council.
- If resubmitted: reviewers will, in part, assess the amended application on your response to the critiques.

Time Frame

- Receipt of SS 4–6 weeks after review
- If not, contact your program officer
- If fundable, respond before Council
- If resubmitting, earliest is 3 months after SS

The Response

- Address significant comments
- Options: change, justify or make clearer what you meant
- Lay out decisions and logic: “no consensus in the literature, so...”
- Don’t ignore hints
 - other models, other literature, other approaches

Comments

Comments

Comments

- “The application does not provide a thorough interview guide in terms of the nature of the questions, and even if the items are totally open-ended, it would have been advisable to lay out some conceptual model.”

Comments

- “The analytic plan for the semi-structured interviews is not elaborated in terms of specific cultural themes and dimensions of social context.”

Responding to Critiques

- Work with:
 - Your program officer
 - Your consultants
 - Your mentor(s)



Questions

