



# MIDDLE ATLANTIC PERSPECTIVE

Newsletter of the  
National Network of Libraries of Medicine

Middle Atlantic Region  
New York • New Jersey • Pennsylvania • Delaware

The New York Academy of Medicine • 1216 Fifth Avenue • New York, NY 10029

Volume 13 • Number 6

November - December 2003

## INTHISISSUE

New Season, New Programs	1
Holiday Closing at NYAM	2
DOCLINE 2.0 Has Arrived	2
New, Easy Way to Subscribe to MARL	3
Welcome New Online Trainer	4
NTCC 2004 Class Information and Schedule	4
Internet and Technology Training Available	6
Bellevue Hospital Center Library Out of DOCLINE	8
Announcements	8
NLM Technical Bulletin	8
NLM Gift Shop	9

## NEW SEASON, NEW PROGRAMS

by Mary Mylenki, Associate Director

The fall season has brought its usual renewed energy level and eagerness to move forward. Many of us have attended fall chapter and other association meetings and have come back stimulated to explore new programs. This is as true for the RML staff as it is for NN/LM members everywhere. Our coordinators are busy traveling around the region, as well as working with their counterparts in other regions on task forces in Public Health, Public Libraries and Hospital Internet Access. They are also visiting sites within our own four states to offer you workshops and training sessions in the NN/LM programs that affect you most closely. We have been delighted at the responses we have received.

An important endeavor for us is to increase the cooperation and collaboration between librarians and public health workers. It has been gratifying to confirm that many librarians are indeed aware of this need and are both willing and eager to work with this potential new patron group. Please let us know if you are interested in this kind of collaboration in your own specific area. There may be funding available to support your plans, and we can provide other types of information and assistance as well.

Public librarians and consumers are also high on our list. The National Library of Medicine (NLM) and the NN/LM have been developing a series of classes to help public librarians expand their knowledge and comfort level with consumer health information and to provide health and wellness information to their patrons. These classes have been field tested and will be available for scheduling early in 2004. We will be publicizing these classes and will be happy to schedule programs in your area.

## NOTE:

This is a newsletter. The links and information are up-to-date when published and are NOT updated after the published date.

The basic support structure for health sciences libraries is not overlooked in our activities. Elsewhere in this issue you can find details of the beautiful, new DOCLINE 2.0. While we do not anticipate the need for extensive training in the new version of DOCLINE, should it prove necessary, we certainly can and will provide this kind of assistance. Either in person for group classes or one-on-one over the phone, Joanne Jahr, our Network Programs Coordinator, is available to answer questions and help you navigate the new program.

Technology support is ever and always important, and we encourage you to contact Denise O'Shea with your technology questions. This is another area in which we are pleased to be able to provide some financial assistance as well.

For all currently available funding opportunities, please see our web site at <http://nmlm.gov/mar>

## HOLIDAY CLOSING at NYAM

The NN/LM Middle Atlantic Region office and the New York Academy of Medicine (NYUNYA) will be closed for the holidays from December 25, 2003, through January 4, 2004. The RML and the Academy will reopen on January 5, 2004.

We wish everyone a joyous holiday season.

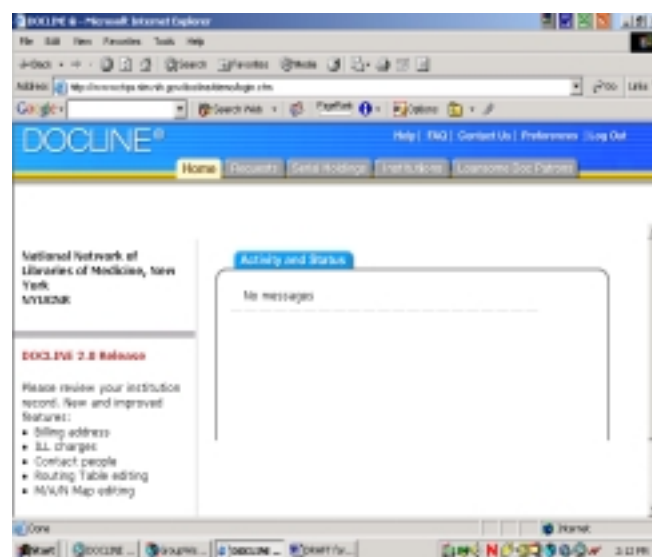
## DOCLINE 2.0 HAS ARRIVED

*[DOCLINE 2.0 is scheduled for release on December 6, 2003. In advance of that date, take a look at the Release Notes you will find at [http://www.nlm.nih.gov/docline/docline\\_rel\\_info\\_current.html](http://www.nlm.nih.gov/docline/docline_rel_info_current.html) You can also preview the new look and enhancements through a PowerPoint presentation (of 41 slides) available at <http://nmlm.gov/libinfo/> Scroll down to "Use NLM's DOCLINE interlibrary loan system" and select "DOCLINE Version 2.0 Preview"]*

And now...say hello to Tugger, the DOCLINE mascot, who will greet you when you log in to the new DOCLINE.



...and this is the new DOCLINE home page



Note the new DOCLINE "banner"

- \* DOCUSER is now “Institutions”
- \* SERHOLD is now “Serial Holdings”
- \* LD is now “Loansome Doc Patrons”
- \* REQUESTS has not been renamed, but Unique Key is now the default

**Search Enhancements include:**

- \* New quick search page
- \* Search by specific field (e.g., Groups, State, Holdings, Base Fee, etc.)
- \* Default Filters
  - \* DOCLINE Library
  - \* Open Library
- \* Additional Search Filters
  - \* My Routing Table, my state, my region
  - \* Not My Routing Table, my state, my region
  - \* Delivery Options (e.g., Ariel, Email pdf, etc.)
  - \* Services (e.g., Loansome Doc, color copies, etc.)

**Update Enhancements include:**

(Categories displayed in left-hand menu column)

- \* Address
  - \* All mailing address information on one screen
  - \* Quick access to related data such as delivery methods in left-hand column
  - \* “Same as” checkbox when billing address = document delivery address
- \* People
  - \* Can assign a single person multiple roles
  - \* Edit once
  - \* “Select All” for one-person library
  - \* Can add more than one person to a specific role
- \* ILL Charges
  - \* Base fee
  - \* Library Group
  - \* Reciprocal Partner
  - \* ILL Partner (other libraries, no special agreements)
  - \* Surcharges (rush, fax, color copies, non-affiliated, etc.)
  - \* Copy fees separate from Loan fees
  - \* Ability to indicate countries served

- \* Routing Table
  - \* Add libraries from search results
  - \* Can move multiple libraries at once
  - \* “Workspace” —holding area for new or moved libraries

- \* Routing Instructions
  - \* Route to NLM
    - Currently “Never Route to NLM” in NLM Delivery pulldown menu; now “Route to NLM” checkbox with other routing locations
  - \* Maximum Cost numeric or “any cost” (no more “N/A” or “Free”)

**Review your record and practice updating it—especially your ILL charges. The demo system is NOT live. Any changes or requests that you make to your record will NOT show up once DOCLINE 2.0 goes into production, so test away, BUT remember to re-enter all vital corrections once it is live.**

Any questions or problems, please do not hesitate to call the RML office for assistance.

**NEW, EASY WAY TO SUBSCRIBE TO MARL**

Thanks to Denise O’Shea, the RML Technology Coordinator, you can now subscribe to MARL, the Regional Medical Library email list, using an easy web-based interface.  
<http://nnlm.gov/mar/listserv.html> Just enter your name and your email address and click on SUBSCRIBE.

If your email address should change, go to the web site, unsubscribe using your old email address and then return to resubscribe using your new email address.

If you are not a subscriber, we urge you to sign on today!

## **RML WELCOMES NEW ONLINE TRAINER**

The Middle Atlantic Region is pleased to welcome Sharon Brown as the newest member of the online training trio, joining Maureen Czujak and Mary Van Antwerp. By continuing to offer training this team seeks to improve the skills of health professionals in using NLM resources, and increase the confidence level and skill of health science librarians.

Sharon holds graduate degrees from Pratt Institute (MLS), and Teachers College, Columbia University (MA in Education) and has years of experience in academic and several special libraries. Her last position offered her venues for collaboration in medical libraries around New York while involved in and supporting research initiatives with healthcare professionals, and in particular care workers. Major arenas of expertise include post-traumatic stress disorder, burnout, ethics, supervision, palliative care, and the cross disciplinary focus on developing and teaching listening skills.

She looks forward to the opportunity to interact with librarians, healthcare workers and researchers in their accessing the results of the NIH's huge investment in basic science, leading sectors both private and public to savor the fruits of scientific discovery and continue to foster "team science." Please contact her by e-mail at [sbrown@nyam.org](mailto:sbrown@nyam.org) or by telephone at 212 822-7357.

## **NTCC 2004 TRAINING INFORMATION AND SCHEDULE**

*By Maureen Czujak, Assistant Director  
National Training Center & Clearinghouse  
NN/LM Middle Atlantic Region*

The 2004 schedule of NLM online searching training classes is available. The 2004 schedule may be found at the [National Training Center & Clearinghouse Web site](#).

The 2004 training schedule will have the NTCC instructors traveling to the RMLs and many repeat locations. In addition to these institutions, the trainers will be traveling to some locations they have not been to in a couple of years, and some brand new ones. The NTCC and NLM will also be conducting an experiment in video broadcasting. The plan is to broadcast the PubMed class from the University of Utah in Salt Lake City to the Loma Linda University in Loma Linda, CA.

Ms. Nancy Curtis, Science & Engineering Center Librarian, University of Maine, Orono, Maine answered our plea for an additional site in New England; Ms. Gail Persily, Associate Director, University of California, San Francisco volunteered the use of their training lab in San Francisco; Ms. Jean Sayre, Director, University of Iowa in Iowa City volunteered the use of their lab; and Ms. Cam Gentry contacted the Training Center and offered the use of the facility at Via Christi Medical Center in Wichita, KS.

### **Classes Offered**

#### **NLM Training: PubMed®**

This full-day class is designed to teach students how to use [PubMed](#). It also includes an overview of the Medical Subject Headings® (MeSH®) and its importance as a tool to both searchers and indexers. PubMed provides access to over 14 million MEDLINE® citations back to the 1950's. Attendees of this class earn 7.5 Medical Library Association (MLA) continuing education credits.

#### **NLM Training: NLM Gateway & *ClinicalTrials.gov***

This half-day class is designed to teach students how to use the NLM Gateway. The NLM Gateway is a Web-based system that allows users to search simultaneously in multiple NLM retrieval systems. This class also includes a discussion and demonstration of *ClinicalTrials.gov*. Attendees of this class earn 3.5 MLA continuing education credits.

### **NLM Training: TOXNET®**

This full-day class is designed to convey the basics of searching the NLM's TOXNET, a Web-based system of databases in the areas of toxicology, environmental health, and related subjects. Students learn the content and structure of files covering toxicology data, toxicology literature, toxic releases, and chemical searching and nomenclature. Among the databases highlighted are TOXLINE®, the Hazardous Substances Data Bank, the Integrated Risk Information System, the Toxic Release Inventory, and ChemIDplus. Attendees of this class earn 6.45 MLA continuing education credits.

The training manuals for the PubMed, NLM Gateway & *ClinicalTrials.gov*, and TOXNET may be downloaded and printed from [http://www.nlm.nih.gov/pubs/web\\_based.html](http://www.nlm.nih.gov/pubs/web_based.html)

### **UMLS® Basics**

This full-day class, taught only at NLM, introduces NLM's Unified Medical Language System® (UMLS): what it is and how it is used. Students gain an understanding of the three main knowledge sources: the Metathesaurus, the Semantic Network, and the SPECIALIST Lexicon—what these are and how these tools are used in a variety of biomedical applications and research. A broad overview of the 95-plus source vocabularies contained in the Metathesaurus is provided. Criteria for assessing the usefulness of specific controlled vocabularies for clinical, research, and educational purposes are discussed. The online UMLS Knowledge Source Server (UMLSKS) is used to access UMLS data throughout the class.

Hands-on exercises allow students to practice basic and advanced searching skills. Students will work with the MetamorphoSys software and learn how it can be applied to produce customized local versions of the Metathesaurus. The audience is medical librarians interested in medical informatics who desire an introduction to the UMLS and an understanding of the issues and practical considerations involved in selecting and using appropriate controlled vocabularies for a range of biomedical applications. Attendees of this class earn 7.5 MLA continuing education credits.

To register for this class, direct your web browser to <http://nnlm.gov/mar/online/request.html> Anyone interested in this class might also peruse the UMLS web site at <http://www.nlm.nih.gov/research/umls/umlsmain.html>

### **NCBI's Introduction to Molecular Biology Information Resources**

This three-day course provides an introduction to four domains of information generated by the field of molecular biology: nucleotide sequences; protein sequences; three-dimensional structures; and complete genomes and maps. An overview of search systems and databases available at the National Center for Biotechnology Information (NCBI), including Entrez and LocusLink, emphasizes how your current search skills apply to molecular biology databases. The course also introduces more technical search systems, including BLAST and Map Viewer, as well as the Cn3D viewer for three-dimensional protein structures. The course format combines lecture, demonstration, and hands-on experience, and concludes with a discussion of various levels of molecular biology information services provided by librarians. Attendees of this class earn 20 MLA continuing education credits.

This class will be given in 2004 at the National Library of Medicine in Bethesda, MD; the University of Washington, Seattle, and the University of Florida, Gainesville. Interested individuals should register at: <http://nnlm.gov/mar/online/request.html> One should also look at the NCBI 3-day course web page <http://www.ncbi.nlm.nih.gov/Class/MLACourse/>

### **Video Broadcast of PubMed training class**

NLM is pleased to announce that the Tuesday, February 17, 2004 PubMed training class held in Salt Lake City, Utah, will be video broadcast to Loma Linda University, Loma Linda, California. The Loma Linda remote site will be able to view and hear the class and send questions to the Salt Lake City instructors via a chat mode function. Our goal is to evaluate the use of this technology for future training class video broadcasts to remote sites. We encourage users to register for these two classes and assist us in our evaluation.

## How to Apply

You may view the training class schedule and register online for classes at the National Training Center & Clearinghouse (NTCC) Web site at <http://nnlm.gov/mar/online>

Every attempt will be made to place training applicants in the class requested. If a class is filled, applicants will be registered for their second choice and will also automatically be placed on the wait list for their first choice. Please note that all classes are considered “tentative,” pending the required minimum enrollment being met one month before the class.

Approximately one month prior to the class, registrants will receive a confirmation letter and form, and web addresses for hotels and local site arrangements. Information on location of training sites and links to many of the sites’ Web pages are available from the NTCC Web site <http://nnlm.gov/mar/online/direct.html>

The classes sponsored by the NLM/NTCC are open to US citizens. If Canadian citizens are interested in attending, please contact CISTI to register for the NTCC classes. You will in turn be put on a “Wait List” and you will be notified four weeks before the class if there is space available.

### Each Person Makes a Difference

Our classes are in demand and usually fill rapidly, often creating a waiting list. In order to help us provide training opportunities to as many people as possible, please notify the NTCC office if you have registered for a class and your plans change. The more advance notice you give us, the more likely it is that someone else can take the available space. It is very disappointing to begin a class with empty chairs that could have been occupied. We are asking for your cooperation to help allow as many people as possible to benefit from this free training program.

## Questions / More Information

If you have questions or need additional information, please contact:

The National Training Center & Clearinghouse  
[ntcc@nyam.org](mailto:ntcc@nyam.org)  
Web site: <http://nnlm.gov/mar/online>  
800-338-7657 (press 2) or  
212-822-7396

or

NLM Customer Service  
[custserv@nlm.nih.gov](mailto:custserv@nlm.nih.gov)  
888-FINDNLM (888-346-3656)

## INTERNET and TECHNOLOGY TRAINING in the MIDDLE ATLANTIC REGION

*By Denise O’Shea, Technology Coordinator*

Are you considering LinkOut for your library? Do you want to see how it works? Do you want to know how to set it up? Are you interested in implementing Electronic Document Delivery within your library and are not sure where to start? Are patrons bringing Personal Digital Assistants (PDAs) into your library and you don’t understand how to help them utilize this technology? Or are you frustrated with your Web search results and want to improve your skills in this area?

To address these and other technology issues the Regional Medical Library offers internet and technology classes that are designed to help you answer your questions. The list of classes currently being offered by NN/LM staff include:

- Basics of Electronic Document Delivery
- Getting Started with LinkOut
- Personal Digital Assistants (PDAs) in the Medical Library
- Super Searcher / Searching the Web

Each class is described in more detail in the following paragraphs.

### ***Basics of Electronic Document Delivery***

This four-hour class is for librarians who are thinking about implementing Electronic Document Delivery (EDD) in their institutions. At the end of this class students will be familiar with the various approaches to providing EDD, and will feel comfortable in discussing equipment and software choices with their Information Technology staff. The class includes discussions about major considerations for EDD implementation, such as learning what users want, examining ILL workflow, and identifying costs and cost savings. The class wraps up with a discussion of license and copyright considerations, and a demonstration of how to update one's DOCLINE record to indicate EDD participation. Upon successful completion of this class, each participant will receive 4 hours of continuing education credit awarded by the Medical Library Association. If you have recently applied for an award or grant to fund EDD participation at your institution, this class will help you plan the successful rollout of this important library technology.

### ***Getting Started with LinkOut***

This two-hour class is designed for libraries that are interested in using PubMed's LinkOut feature. At the end of this class participants will understand the uses of LinkOut for library holdings of electronic and print journals. Participants will also learn how to setup a LinkOut account, incorporate library identity information into LinkOut, enter holdings, display icons and keep up-to-date with LinkOut developments. During the class we will discuss some common misconceptions about LinkOut, such as "it's difficult to understand and implement" and "it will give me free access to all eJournals regardless of licenses held by my library," etc. Upon successful completion of this class, each participant will receive 2 hours of continuing education credit awarded by the Medical Library Association and will have the skills to register their library holdings with LinkOut.

### ***Personal Digital Assistants (PDAs) in the Medical Library***

This class was discussed in the last issue of the newsletter. It is a two-hour class designed for medical librarians who are interested in learning

more about personal digital assistant technologies. Participants are introduced to basic PDA technology concepts, hardware and software resources, and potential health science and library applications for PDAs. Upon successful completion of this class, each participant will receive 2 hours of continuing education credit awarded by the Medical Library Association.

### ***Super Searcher / Searching the Web***

This hands-on course focuses on the advanced features of web search engines, and on how to evaluate web search sites and search results. Participants will use various search tools, compare the features and utility of each, and develop search strategies that will increase the precision and scope of their searching. Discussions, exercises and short presentations are all part of this four hour class. Upon successful completion of this class, each participant will receive 4 hours of continuing education credit awarded by the Medical Library Association, and will be able to perform searches that quickly and efficiently identify useful web sites and information resources.

If you are interested in requesting free technical training for the staff at your institution or for the members of your organization, please send the following information to me, at [doshea@nyam.org](mailto:doshea@nyam.org):

- Class Title (choose one from the list above)
- Proposed Location (host institution name), including City, State, and Zip Code
- Preferred month for training
- Background of potential trainees – librarians, doctors, nurses, public health professionals, allied health professionals, community based organization personnel, students or other (please describe)
- Your name and title
- Your institution and its address (if different from the proposed location)
- Your phone
- Your e-mail address

By offering these classes our goal is to promote the awareness of resources and technology and highlight innovative solutions for our Network members.

## **BELLEVUE HOSPITAL CENTER LIBRARY OUT OF DOCLINE**

*by Kathel Dunn, Associate Director, Public Services, Ehrman Medical Library, New York University Medical Center*

As of October 15, 2003, the C.E. De La Chapelle Medical Library of Bellevue Hospital Center (NYUBLV) ceased participating in DOCLINE as an independent library. The Chapelle Library's services to the Bellevue Hospital Center faculty and staff will continue under the leadership of the faculty and staff of Ehrman Medical Library, New York University Medical Center. Its holdings will eventually be incorporated in the Ehrman Medical Library's catalog, MEDCat. All requests for interlibrary loan may be made through the Document Delivery Services of Ehrman Medical Library.

Questions or comments regarding Document Delivery should be directed to Joan Himmel, Manager, Document Delivery Services at [himmel@library.med.nyu.edu](mailto:himmel@library.med.nyu.edu) or (212) 263-7238.

**For those libraries that have Bellevue Hospital Center (NYUBLV) in their routing tables, please remove it at your earliest convenience.**

## **ANNOUNCEMENTS**

### **New DOCLINE Library**

We would like to welcome back Community General Hospital, Syracuse, NY, (NYUZUG), to full Network membership and DOCLINE participation.

### **New EFTS Participant**

We welcome Nassau University Medical Center (NYUNCM) as an EFTS participant. We now have 313 DOCLINE libraries in this region participating in EFTS.

### **New BHSL Library**

We welcome the New York College of Podiatric Medicine (NYUPOD) as a BHSL participant at Level 5 and the Cabrini Medical Center (NYUCMC) as a BHSL participant at Level 4.

## **NLM TECHNICAL BULLETIN 2003**

The following articles from the current *Technical Bulletin* are available on the Web at:

<http://www.nlm.nih.gov/pubs/techbull/tb.html>

2003 September - October; 334

OLDMEDLINE Citations Join PubMed® - e2

NLM® Training Program: 2004 - e3

Molecular Biology Information Resources:

Getting Your Footing and Keeping Up with the Pack - e4

2004 MeSH Changes to the Category B Organisms Tree and the Check Tag Animal - e5

Entrez Global Query: NCBI's New Cross-Database Search Engine - e6

MEDLINE®/PubMed® End-of-Year Activities - e7

Technical Notes: - e1

Unified Medical Language System's (UMLS) Summer Release

Regional Offerings of NCBI's Three-Day Course: Introduction to Molecular Biology Information Resources

NLM Profiles in Science Web Site Adds Papers of Anatomist Florence R. Sabin  
Just-In-Time Training to Learn How to Use PubMed's Cubby Feature

MEDLINE Language Definitions Change to Croatian and Serbian

MEDLINE UI/PubMed ID Matcher

Available on NCBI's E-Utilities Web Site  
UMLS Basics Training Class Slides Now Available

New Clinical Alert Issued

NLM® and National Institute on Aging Launch NIH Senior Health Web Site

NLM® Announces a New Version of the PubMed® Tutorial

*Biochemistry, 5th edition* Added to NCBI Bookshelf

2004 MeSH Browser & MeSH Files for Download Available





## Just in time for the holidays..... The NLM Gift Shop

Do you need a gift for...

- members of your library committee? See china mugs or coasters.
- your favorite doctor or nurse? See pedometers or the calendar/clock/calculator.
- your students? See night shirts.
- your mother? See Elizabeth Blackwell note cards or tote.
- your father? See tape measures or golf shirts.

Receive a **FREE** commemorative afghan with orders of \$250 or more.

[www.nlmgiftshop.org](http://www.nlmgiftshop.org)

*The gift shop web site is a joint venture between the National Library of Medicine and the National Institutes of Health R&W Store. It uses the industry standard Secure Sockets Layer (SSL) encryption protocol to encrypt communications. The gift shop does not give, share, sell or transfer any personal information to a third party.*



**NN/LM, Middle Atlantic Region  
The New York Academy of Medicine  
1216 Fifth Avenue  
New York, NY 10029**

**Phone: 212-822-7396 or 800-338-RMLS; Fax: 212-534-7042  
E-mail: user name (first initial last name) followed by  
@nyam.org; url: [http:// www.nlm.gov/mar/](http://www.nlm.gov/mar/)**

**NN/LM STAFF**

Director - Maxine L. Rockoff, Ph.D.  
Associate Director - Mary Mylenki  
Consumer Health Information Coordinator - Rhonda Allard  
Education Programs Coordinator - Joan Seidman  
Network Programs Coordinator - Joanne Jahr  
Outreach Programs Coordinator - Peggy Falls  
Technology Coordinator - Denise O'Shea  
Administrative Assistant - Dorothy Weyeneth

**NATIONAL TRAINING CENTER AND CLEARINGHOUSE  
STAFF**

Assistant Director - Maureen Czujak  
Online Analyst - Sharon A. Brown  
Online Analyst - Mary Van Antwerp  
Assistant for Training Services - Charles Rapisarda

***MIDDLE ATLANTIC PERSPECTIVE*** is supported under NLM  
Contract NO1-LM-1-3521 and is published bimonthly.