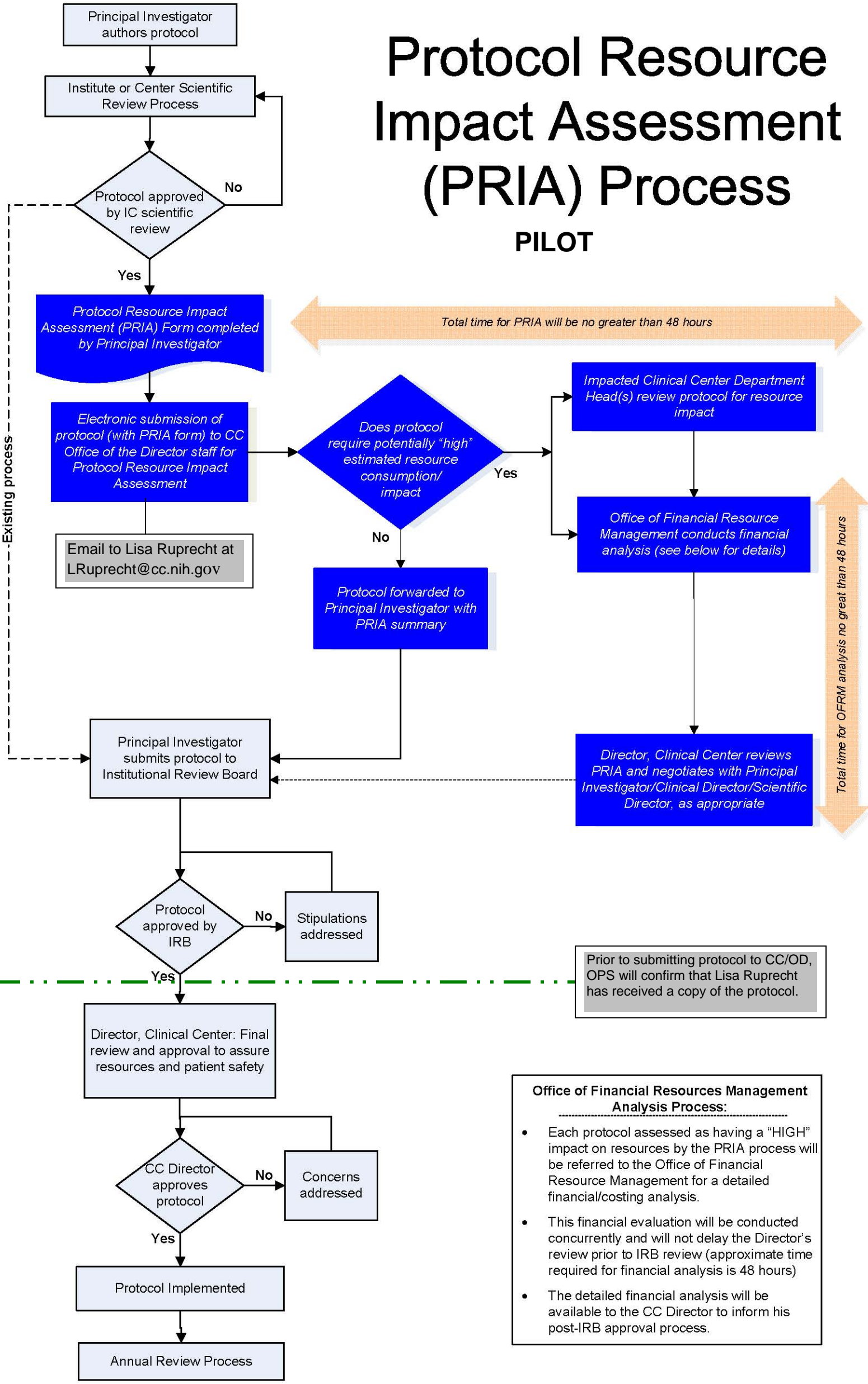


# Protocol Resource Impact Assessment (PRIA) Process

PILOT



Total time for PRIA will be no greater than 48 hours

Total time for OFFRM analysis no great than 48 hours

Prior to submitting protocol to CC/OD, OPS will confirm that Lisa Ruprecht has received a copy of the protocol.

**Office of Financial Resources Management Analysis Process:**

- Each protocol assessed as having a "HIGH" impact on resources by the PRIA process will be referred to the Office of Financial Resource Management for a detailed financial/costing analysis.
- This financial evaluation will be conducted concurrently and will not delay the Director's review prior to IRB review (approximate time required for financial analysis is 48 hours)
- The detailed financial analysis will be available to the CC Director to inform his post-IRB approval process.