

“No one should suffer twice!”

The Wisconsin CECCR

Our Partnerships

Organizations

- U of Wisconsin
- MD Anderson
- Dana Farber
- Hartford Hospital
- U of Wash. St. Louis

- U of North Carolina
- Kaiser Portland
- Tufts University

Disciplines

- Communication science
- Computer science
- Educational psychology
- Nutritional science
- Nursing
- Oncology
- Psychology
- Radiology
- Statistics
- Systems Engineering



QuickTime™ and a
decompressor
are needed to see this picture.



Coping with Lung Cancer
a Network of Support

[CHESSMarks](#)

[Dictionary](#)

Search:



[Exit](#)



information

- [Cancer & Caregiving Topics](#)
- [Ask an Expert](#)
- [Resources](#)
- [Caregiver Tips](#)



support

- [Discussion Group](#)
- [Personal Stories](#)

Click Here
for the latest
Cancer News



tools

- [Easing Distress](#)
- [Healthy Relating](#)
- [Calendar](#)
- [Contact List](#)
- [Respite Planning](#)
- [Action Plan](#)
- [My Journal](#)

Health Status

[Update Health Status](#)
[View Health Changes](#)

Information You Wanted:
[Sadness/Depression](#)

Your Messages

[Discussion Messages](#)
[Ask an Expert Messages](#)

Appointments:
[Make an Appointment](#)

Your Website

[View your help calendar.](#)

Latest message: 12/05 09:13 AM

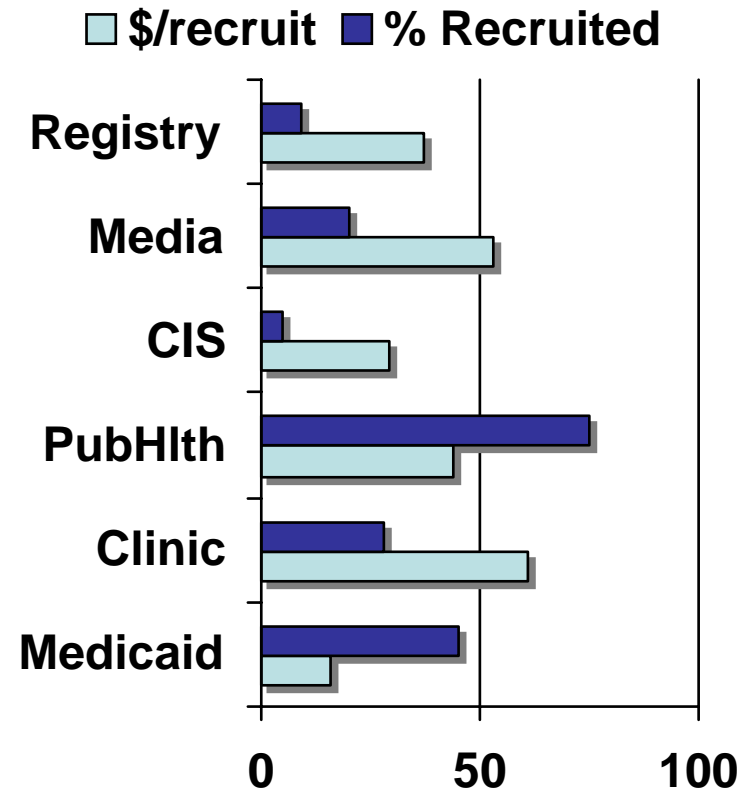
1) With “deep support”, eHealth can work

- RCT of 300 breast cancer pts
- Internet access v. CHES
- Results compare CHES vs. Control
- Note benefits sustain four months after CHES is removed
- Why?
 - Discussion group
 - Consistent source of info
 - Service integration
 - Training

QuickTime™ and a
decompressor
are needed to see this picture.

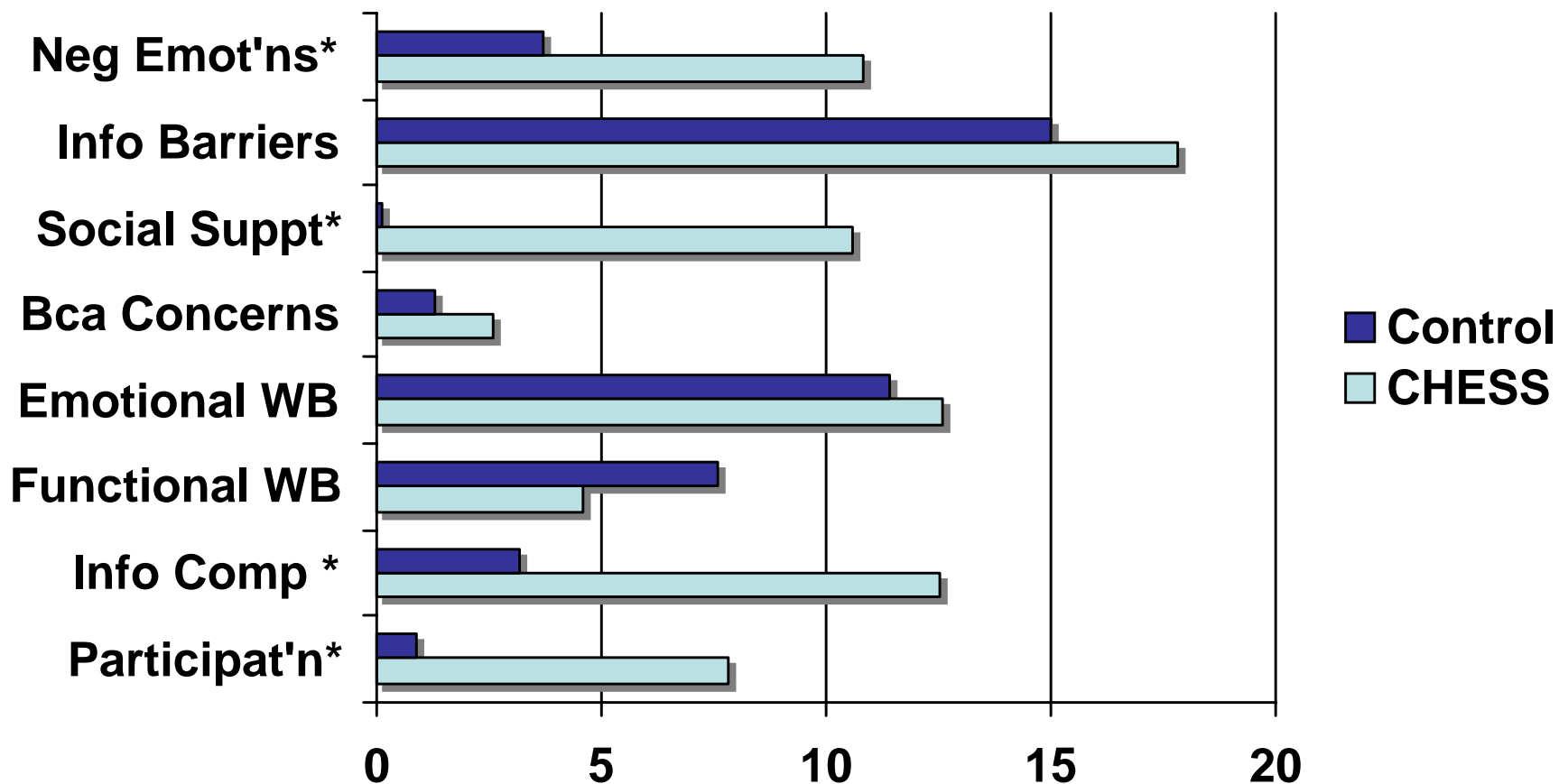
2) Population-based Intervention

- Low income Bca Pts
- Rural Wisconsin
- Detroit
- Multi-method recruit
- Cheapest/recruit
 - Medicaid (\$16)
 - CIS (\$29)
- Best recruit rate
 - Public Health (75%)
 - Medicaid letters (45%)
- **Cost per installation**
 - **\$180: 4 month access**



CHES Help Underserved

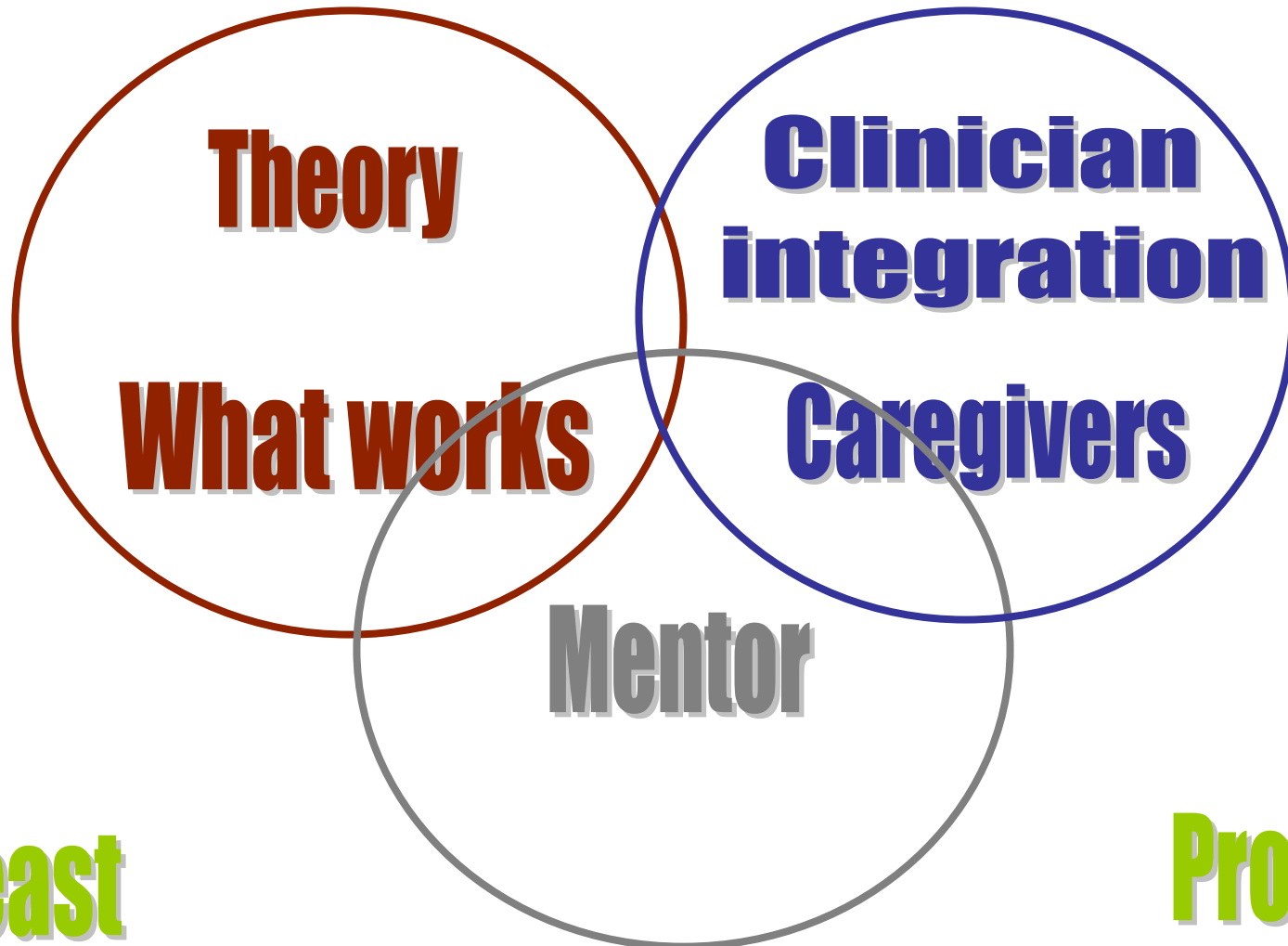
(Higher Score is Better)



Low income women w Breast Cancer in rural Wisconsin & Detroit (n=228).
Vs. Comparison Group (n=52)

Research Focus

Lung



Breast

Prostate



Theory

Mentor

Communication and Self Determination Theory

CHESS

Active Processing

Competence

- Information
- Skills

Relatedness

- Loneliness
- Social support
- Being new person

Autonomy

- Self efficacy
- Control over lives

**Health
behavior**

**Quality
of Life**





What works

**Info vs. Info + Support vs.
Info + Support + Skills
(Sample result)**

QuickTime™ and a
decompressor
are needed to see this picture.



**Clinician
integration**

Caregivers

What are informal caregivers facing?

- Medical care and monitoring
- Be assertive w medical system
- Treatment decisions
- Instrumental support
- Emotional support for patient
- Communication with family

It is a family disease.

Coping with Lung Cancer a Network of Support

[CHESSMarks](#)

[Dictionary](#)

Search:



[Exit](#)



information

- [Cancer & Caregiving Topics](#)
- [Ask an Expert](#)
- [Resources](#)
- [Caregiver Tips](#)



support

- [Discussion Group](#)
- [Personal Stories](#)



tools

- [Easing Distress](#)
- [Healthy Relating](#)
- [Calendar](#)
- [Contact List](#)
- [Respite Planning](#)
- [Action Plan](#)
- [My Journal](#)

Health Status

[Update Health Status](#)
[View Health Changes](#)

Information You Wanted:
[Sadness/Depression](#)

Your Messages

[Discussion Messages](#)
[Ask an Expert Messages](#)

Appointments:
[Make an Appointment](#)

Your Website

[View your help calendar.](#)

Latest message: 12/05 09:13 AM

Health Status [? Need Help](#)

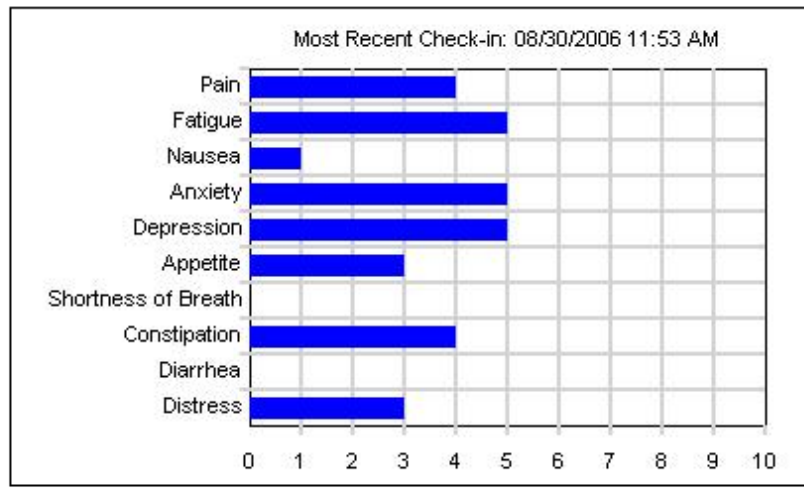
Health Status Summary Page

This CHES Clinic Report is based on information provided by the patient (**Frank Adams**) and the caregiver (**Jane Adams**).

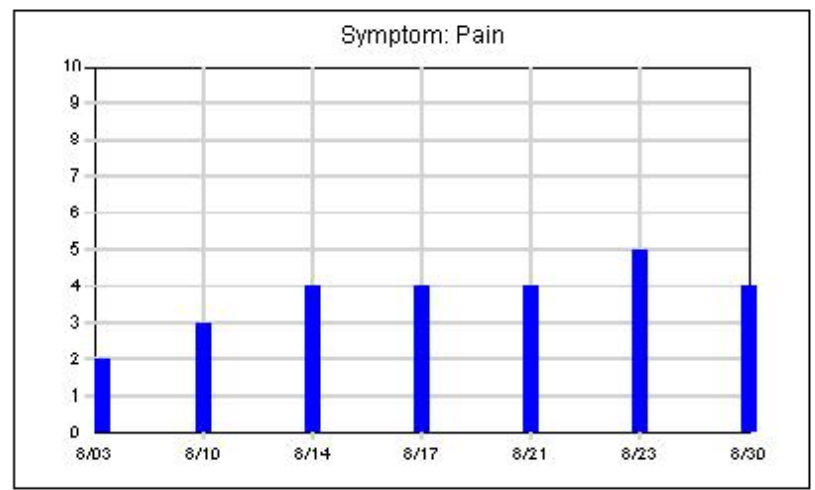
Frank's Clinic Report. (Show Caregiver [Jane's](#) Report)

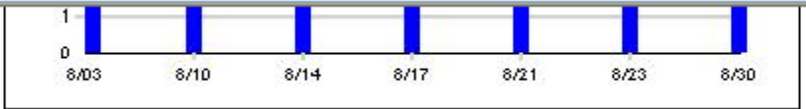
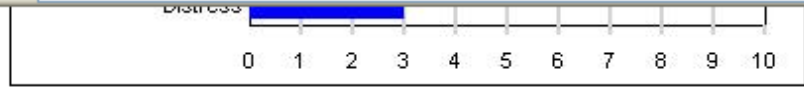
[Compare Frank's and Jane's Data](#)

Latest ECOG/Activity Level: 1-Normal activities with some effort



See graph for:





Patient Needs:

- [Changes in Household Roles](#)
- [Communication: Spouse/Partner](#)
- [Estate Planning](#)
- [Pain](#)
- [Sadness/Depression](#)

Caregiver Needs:

- [Fatigue](#)
- [Pain](#)
- [Sadness/Depression](#)
- [Sleep Problems](#)
- [Work](#)

Clinic Visit Questions:

Note that the patient and the caregiver sent these questions separately and may not be aware of each other's concerns.

Patient Questions:

I am feeling troubled about the future, but don't want to worry my wife. It's hard to talk about these issues.

Caregiver Questions:

What are the options if the current treatment doesn't work?
Is there anyone on staff who can help me figure out the family leave options that are supposed to be available from an employer?

Caregiver Status: Physically, Jane reported coping poorly at the last check-in. At the last check in, Jane reported some lack of confidence in caring for Frank's needs.

[Print Report](#) [Home](#)

Lung cancer: CHES w clinician report

CHES w
Clinician report
v. Control

Positive effect on
Physical health ($p < .05$)
(Patient report)

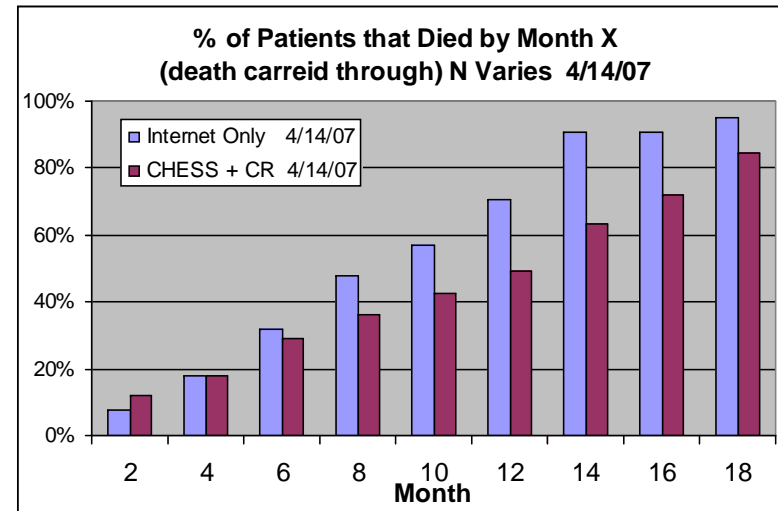
- Pain
- Fatigue
- Physical Qual of Life

Improved
Life Expectancy
 $P < .025$

No effect on
Mental health

- Anxiety
- Depression
- Distress

No effect on caregiver





Future

Pre-diagnosis

Developed very accurate mammogram analysis

QuickTime™ and a
decompressor
are needed to see this picture.

Should CHESS be provided pre-diagnosis?

QuickTime™ and a
decompressor
are needed to see this picture.

Family Support Systems

Collaboration w Tufts University

Susan Parsons MD

QuickTime™ and a
decompressor
are needed to see this picture.

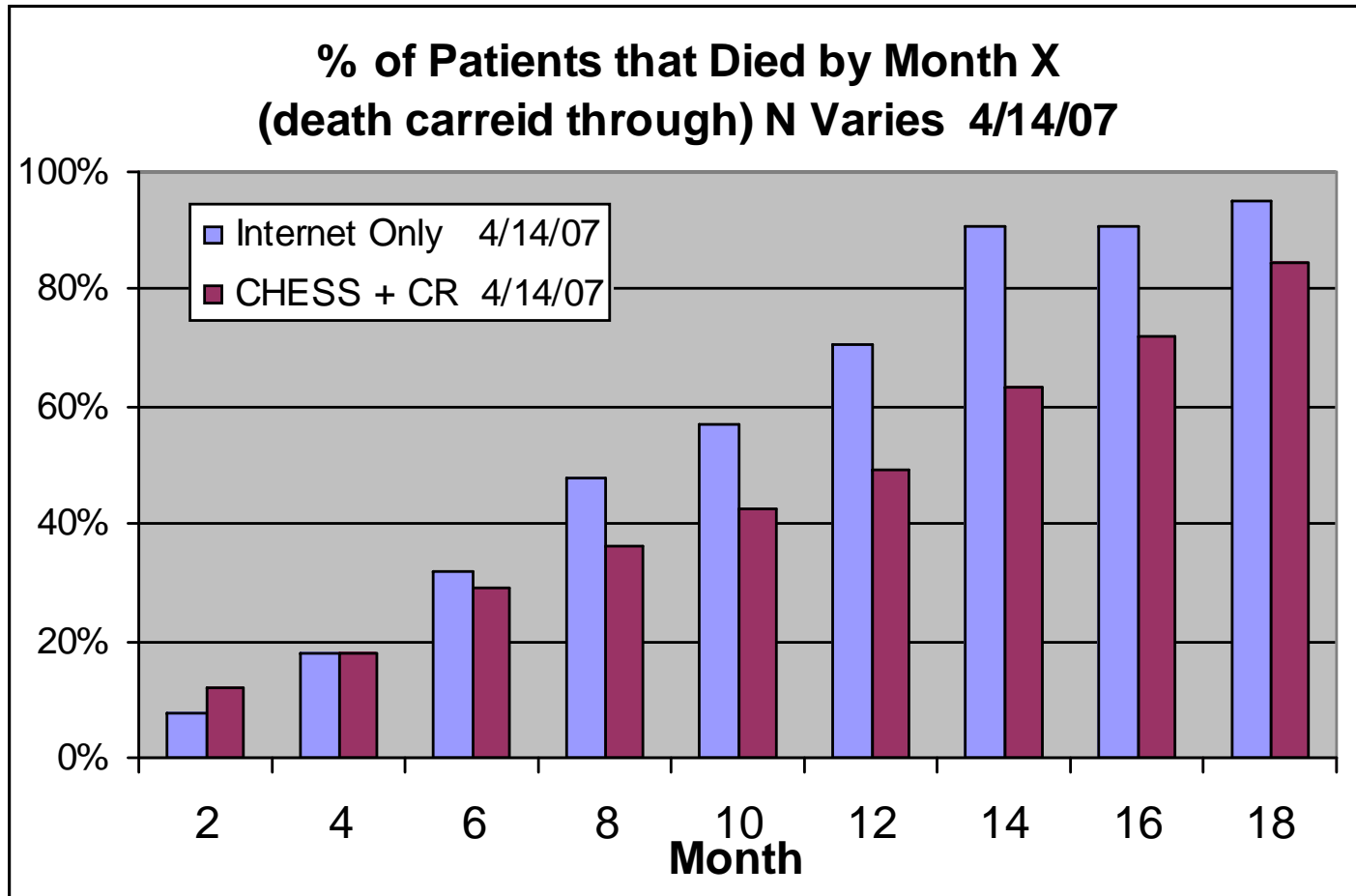
Diffusion/Dissemination/Spread

- **Integrate CHES Bca into large managed care provider network**
- **Examine outcomes**
 - **Patient (affect and quality of life)**
 - **Clinician (visit satisfaction & job satisfaction)**
 - **Cost to provider of implementation and operation (business case)**

QuickTime™ and a
decompressor
are needed to see this picture.

47% Functionally illiterate!

Can CHESS really extend life?



See you in the Poseidon Room!