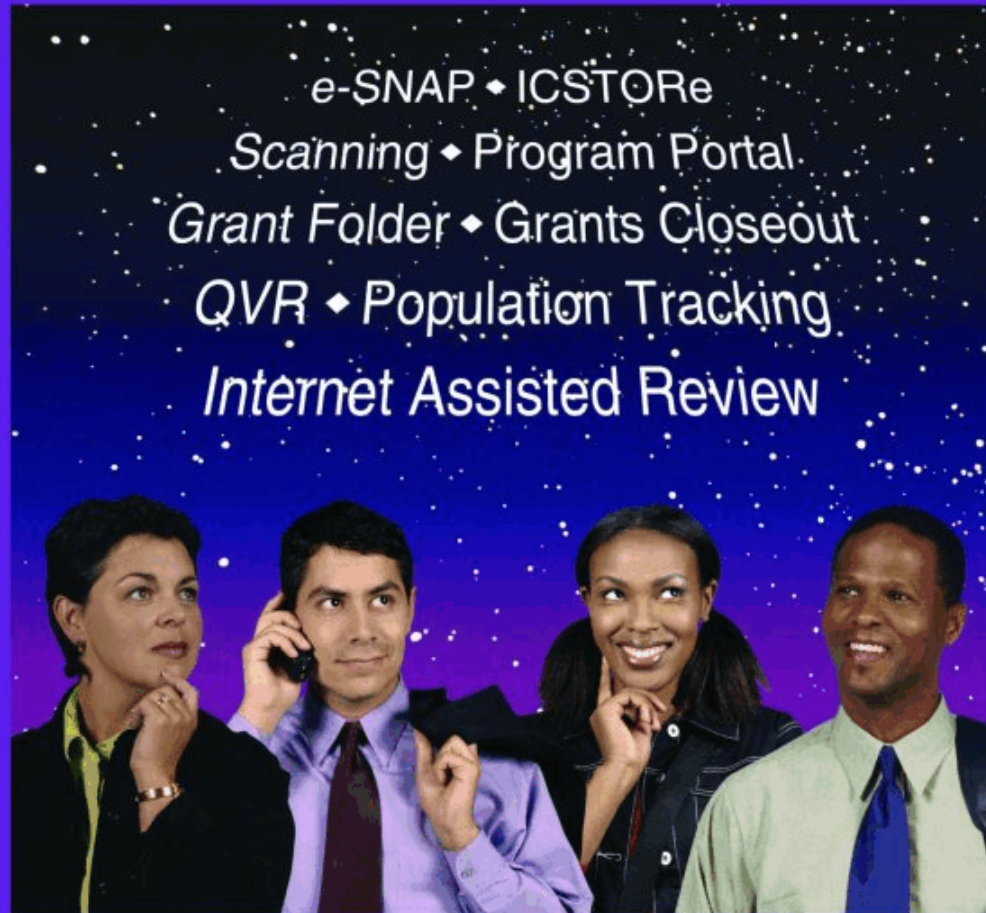


electronic Research Administration (eRA): **What's in it for me?**



**Come learn more about
what eRA can do for you.**



Friday, May 10, 2002 • 8:30 a.m. to 1 p.m. • Natcher Conference Center

For more information and to register online, visit the eRA web site at: <http://era.nih.gov>

Please contact Lyn Albrecht at 301-451-5954 or askera@od.nih.gov if you need sign language interpretation or any other accommodation.



eRA: What's In It for Me?

**A Presentation on Electronic Research
Administration for NIH Staff**

May 10, 2002



Overview

- Purpose
- Background
- Quotes
- What is eRA?
- Why eRA?
- Objectives and Goals of eRA
- How is it being accomplished?



Back to the Basics

- **Keep in mind the mission of the NIH -**
 - ▶ **It is not just to review grant applications**
 - ▶ **It is not just to fund research grants**
 - ▶ **It is not just to conduct research**
- **The NIH mission is to uncover new knowledge that will lead to better health for the public**
- **eRA is one of the methods by which this is being accomplished**



Quotes

- **“I think there is a world market for about five computers.”**
 - ▶ **Thomas J. Watson, Chairman of IBM, 1943**
- **“There is no reason for anyone to have a computer in their home.”**
 - ▶ **Kenneth Olson, President of Digital Equipment, 1977**
- **“640K ought to be enough for anybody.”**
 - ▶ **Bill Gates, CEO of Microsoft, 1981**



More Quotes

- **“The times they are a changin’”**
 - ▶ **Robert Zimmerman**
 - Aka Bob Dylan
- **“A company’s fundamental strength is its ability to adapt to change, rather than predict it”**
 - ▶ **Jack Welch, former CEO of General Electric**



The Rules

- **Rule #1**

- ▶ **We have been, and will continue to be, in a state of transition for the foreseeable future**

- **Rule #2**

- ▶ **Transitions are hell**



What is eRA?



What Really is eRA?

- eRA is the NIH infrastructure for conducting interactive electronic transactions for the receipt, review, monitoring and administration of NIH grant awards to biomedical investigators
- eRA consists of two systems: the NIH Commons and IMPAC II
- The NIH Commons enables communication with the research community; IMPAC is used by NIH staff



Why eRA?

Paper and People

■ Each year:

- ▶ ~46,000 applications
- ▶ ~3,200 review meetings
- ▶ ~80 National Advisory Council meetings
- ▶ >60,000 competing and non-competing awards
- ▶ >2,200 grantee institutions worldwide
- ▶ ~100,000 applicants
- ▶ ~200,000,000 pieces of paper

■ Each Day:

- ▶ 3,500 users from OD and ICs
- ▶ 1.6 million transactions



**And
Growing!**



GPEA

- Not to be confused with the Paperwork Reduction Act or GPRA
- The Government Paperwork Elimination Act (GPEA, Pub. L. 105-277) requires that, when practicable, Federal agencies use electronic forms, electronic filing, and electronic signatures to conduct official business with the public by 2003
- At the moment the paper application is the official record, but that may change



One Result



Too Much Paper Also Results in:



Overload!



eRA Objectives

- **Convert all of the paper involved in the NIH application, initial peer review, Council review and both award and post-award administration into an electronic medium so as to effect a process of complete electronic grants administration**
- **Integrate with all NIH business systems and the Federal Commons**



eRA Goals

- **Implement user-driven, user-friendly, highly reliable, secure systems that provide a complete set of tools to allow access to grant information**
- **Provide a computer architecture that allows the system to quickly react to changes in business practices, policies and technology**
- **Inform, educate, listen to and respond to the user community**

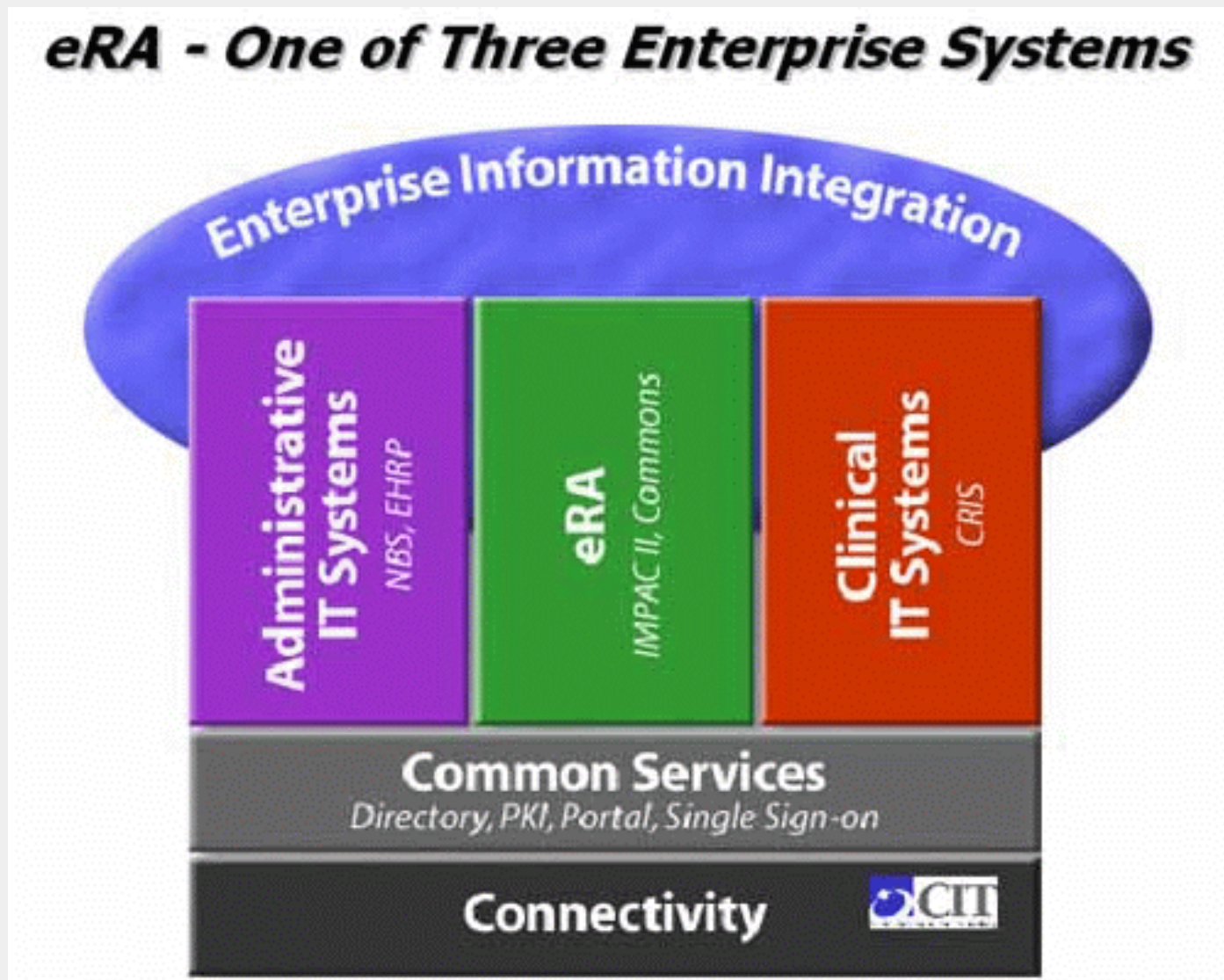


Benefits of eRA

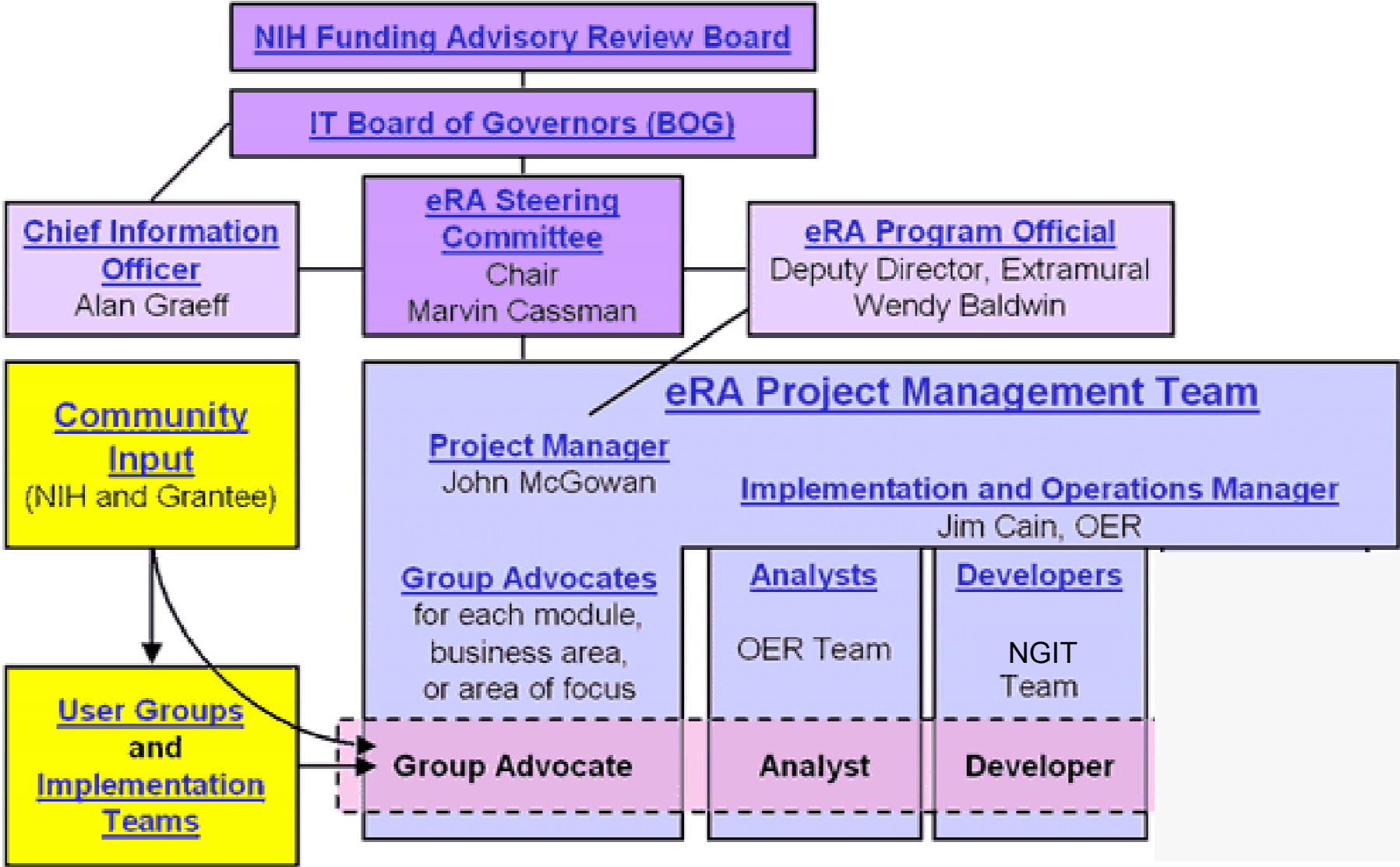
- Information can be accessed in ways that could never have been done previously
- The IMPAC II databases can be used as a resource for all ICs (either through the eRA modules or through extension systems)
- Sometimes IC systems can be adapted for enterprise-wide use



How It Fits Together



eRA Project Management



The Advocates

- Budget Management - Earl Hodgkins
- Committee Management - Anna Snouffer
- CIT Liaison - Pete Morton
- Data Integrity - Belinda Seto
- Electronic Council Book - Thor Fjellstedt
- Commons - George Stone
- Grants Management - Marcia Hahn
- Infrastructure - Ali Ghassemzadeh
- IC Technical Perspective - Stephen Hughes
- Paperless Business Practices - Steven Hausman
- Receipt, Referral and Assignment - Brent Stanfield
- Reporting - Carol Martin
- Review - Eileen Bradley
- Scientific Program Management - Bud Erickson
- Training Activities - Walter Schaffer
- User Support - Tim Twomey



Grants Modules

- Grants Management (GM)
- Committee Management (CM)
- Quick View (QV)
- Training Activities (TA)
- Special Initiatives Tracking System (SITS)
- IRDB (IMPAC II Decision Support)
- PowerView (PV)
- Review
- IC Operations (ICO)
- CRISP +
- Receipt and Referral (CSR Only)
- ECB/QVR.....



Grants Modules Overview

Commons Administrative Modules

CGAP – Competitive Grant Application

RR – Receipt, Referral, Assignment

CM – Committee Management

REV – Review

ECB – Electronic Council Book

GM – Grants Management

Status – Commons Status

ICO – Institute and Center Operations

e-SNAP – Streamlined Non-Competing
Award Process

IEdison – Invention Reporting

Blue = IMPAC II Modules

Yellow = Commons Modules

Grants Modules

Commons & CGAP

■ Commons

- ▶ A virtual meeting place that facilitates contact with the NIH; Contains organizational profile and financial, assurance and certification information; principal investigators complete a professional profile, contact information and biosketch

■ CGAP (Competitive Grant Application Process)

- ▶ In the future the applicant institution will send an electronic grant application to NIH as a datastream



Production 1.93

Restricted Sites	Production System Login	Demo Site Login	Unrestricted Sites
SNAP	   		CRISP
Status			NIH Home Page
Admin			OER Home Page
X-Train			CSR Home Page
Datastream Delivery			Edison
Application Viewer			NSF Fastlane

- About the Commons**
- ▶ Scope and Purpose
 - ▶ Frequently Asked Questions
 - ▶ Grantee Organization Registration
 - ▶ ERA Contacts

What's NEW on the Commons

Minimum Password Length Increased - The minimum password length for ERA Commons accounts has been increased to six characters to match present industry standards. Existing accounts with passwords less than six characters will continue to work. However, users who create new accounts or modify passwords of existing accounts will have to abide by the new 6 character minimum.

Closed Registration - We are currently developing a new, more robust version of the NIH Commons to accommodate the broad grantee community. During this re-design and development we must limit the number of institutions in the current pilot to those who have already registered.

National Institutes of Health (NIH)
 Bethesda, Maryland 20892
 Contact Us: commons@od.nih.gov
[Privacy Statement](#)
[Y2K Readiness](#)

[Production System Login](#) [Demo Site Login](#) [SNAP](#) [Status](#) [Admin](#)
[X-Train](#) [Datastream Delivery](#) [App Viewer](#) [CRISP](#) [NIH](#) [OER](#) [CSR](#)
[Edison](#) [NSF Fastlane](#) [Scope & Purpose](#) [Frequently Asked Questions](#)
[Grantee Organization Registration](#) [ERA Contact](#)

Grants Modules

e-SNAP

- **e-SNAP (Electronic Streamlined Non-Competing Award Process)**
 - ▶ **e-SNAP allows PIs to electronically prepare, and administrative officials from grantee organizations to electronically approve and submit, information consistent with the Application for Continuation of a Public Health Service Grant (PHS 2590; the "Type 5")**



Grants Modules

ICSTORE

- **ICSTORE (IC Search, Track, Order, Report)**
 - ▶ **ICSTORE is a shared module that is available through the Grants Management, Review, QuickView and other IMPAC II Modules. It allows for bulk/printing of Summary Statements as well as for downloading of IMPAC II grant data to Excel. In the future it will permit the creation of CDs as well.**



Grants Modules

ECB/QVR

- **ECB/QVR (Electronic Council Book/Query View Report)**
 - ▶ **ECB allows searches for summary statements, percentiles, priority scores, initial review groups, and key identifying information for applications going to institute advisory councils for second-level review**
 - ▶ **The QVR system enables a much broader range of searches and provides a reporting function**



Grants Modules

Review

- **Review**

- ▶ **NIH review organizations use the Review module to access application data and generate lists of prospective reviewers and committee rosters, assign reviewers to applications, score applications, review meeting outcomes, and prepare summary statements**



Grants Modules

Grant Folder

- **Grant Folder**

- ▶ **The Grant Folder is a shared module present in many of the other modules that gives the user a central access point, on a single screen, to a variety of documents stored in the IMPAC II database, including the summary statement, grant image and the PI history**



Grants Modules

Closeout Module

■ Closeout module

- ▶ **Allows grants management staff to perform the activities necessary to close out a grant, including the ability to query IMPAC II for grants that terminate or expire in a specific month, generate letters to the Business Official and PI, and track items required for closeout.**
- ▶ **Future enhancements will include generating workload reports and Federal Records Centers Reports**



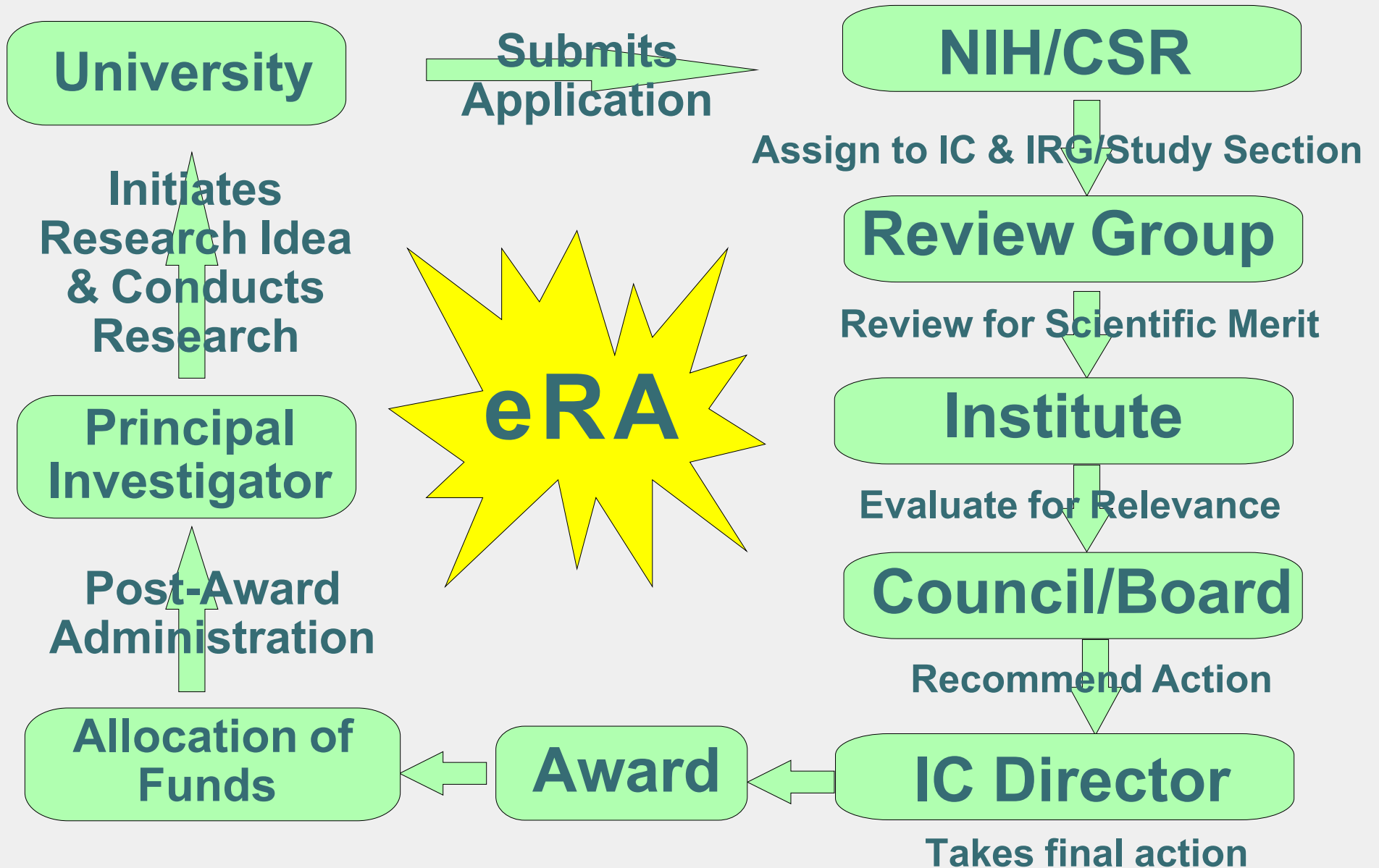
Grants Modules

Population Tracking

- **Population Tracking**
 - ▶ **This application records and stores information about target and yearly cumulative enrollment of women, men, and minorities involved in NIH-supported clinical research**



The Grant Life Cycle



Where Does Everything Fit?



University

Initiates
Research Idea
& Conducts
Research

**Principal
Investigator**

Post-Award
Administration

**Allocation of
Funds**

Submits
Application

Commons

NIH/CSR

Assign to IC & IRG/Study Section

Review Group

Review for Scientific Merit

Institute

Evaluate for Relevance

Council/Board

Recommend Action

IC Director

Takes final action

Award

University

Submits Application

NIH/CSR

Assign to IC & IRG/Study Section

Review Group

Review for Scientific Merit

Institute

Evaluate for Relevance

Council/Board

Recommend Action

IC Director

Takes final action

Initiates Research Idea & Conducts Research

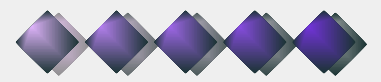
Principal Investigator

Post-Award Administration

Allocation of Funds

Scanned Grant Image

Award



University

Initiates
Research Idea
& Conducts
Research

**Principal
Investigator**

Post-Award
Administration

**Allocation of
Funds**

Submits
Application

Review

NIH/CSR

Assign to IC & IRG/Study Section

Review Group

Review for Scientific Merit

Institute

Evaluate for Relevance

Council/Board

Recommend Action

IC Director

Takes final action

Award



University

Submits Application

NIH/CSR

Assign to IC & IRG/Study Section

Review Group

Review for Scientific Merit

Institute

Evaluate for Relevance

Council/Board

Recommend Action

IC Director

Takes final action

Initiates Research Idea & Conducts Research

Principal Investigator

Post-Award Administration

Allocation of Funds

ICSTORE

ICSTORE

ICSTORE

Award



University

Initiates
Research Idea
& Conducts
Research

**Principal
Investigator**

Post-Award
Administration

**Allocation of
Funds**

Submits
Application

NIH/CSR

Assign to IC & IRG/Study Section

Review Group

Review for Scientific Merit

Institute

Evaluate for Relevance

Council/Board

Recommend Action

IC Director

Takes final action

ECB

Award



University

Submits Application

NIH/CSR

Assign to IC & IRG/Study Section

Review Group

Review for Scientific Merit

Institute

Evaluate for Relevance

Council/Board

Recommend Action

IC Director

Takes final action

Initiates Research Idea & Conducts Research

Principal Investigator

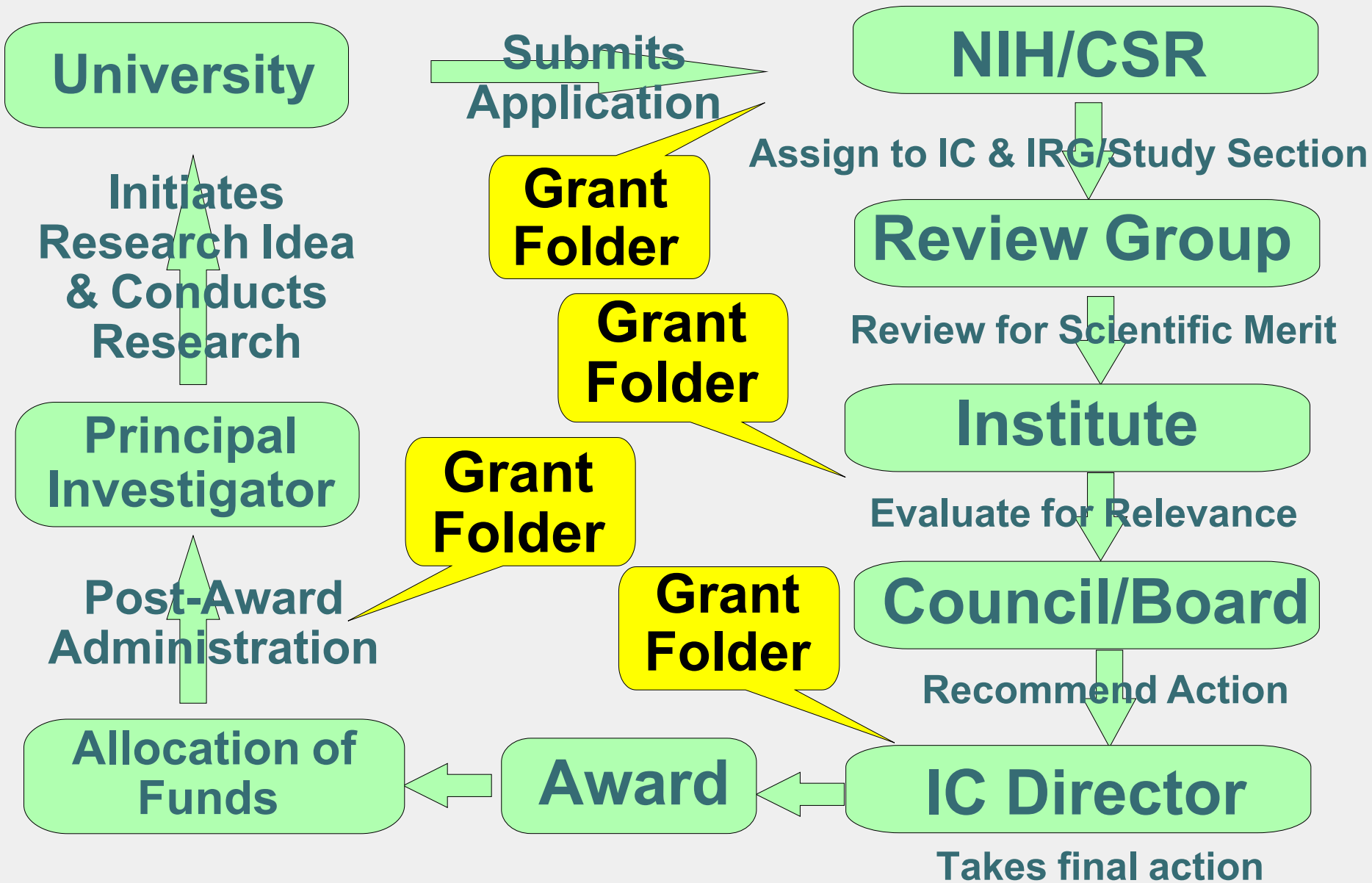
Post-Award Administration

QVR

Allocation of Funds

Award





University

Submits Application

NIH/CSR

Assign to IC & IRG/Study Section

Review Group

Review for Scientific Merit

Institute

Evaluate for Relevance

Council/Board

Recommend Action

IC Director

Takes final action

Initiates Research Idea & Conducts Research

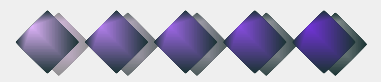
Principal Investigator

Post-Award Administration

Allocation of Funds

Population Tracking

Award



University

Submits Application

NIH/CSR

Assign to IC & IRG/Study Section

Review Group

Review for Scientific Merit

Institute

Evaluate for Relevance

Council/Board

Recommend Action

IC Director

Takes final action

Initiates Research Idea & Conducts Research

Principal Investigator

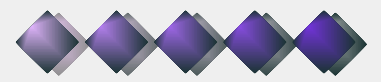
e-Snap

e-Snap

Post-Award Administration

Allocation of Funds

Award



University

Submits Application

NIH/CSR

Assign to IC & IRG/Study Section

Review Group

Review for Scientific Merit

Institute

Evaluate for Relevance

Council/Board

Recommend Action

IC Director

Takes final action

Initiates Research Idea & Conducts Research

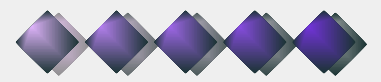
Principal Investigator

Closeout

Post-Award Administration

Allocation of Funds

Award



On the Horizon

- **The Program Portal and eRA Portal**
- **Internet-Assisted Review**
- **Knowledge Management**
- **New Technologies**
- **And a lot more...**



The eRA Website

Bookmark it!

<http://era.nih.gov/>



The People Who Put This Together

- Lyn Albrecht
- Patricia Austin
- Eileen Bradley
- Cathy Buckley
- Carlos Caban
- Anne Connors
- Tracey David
- Bonnie Ellis
- Thor Fjellstedt
- Carla Flora
- Donna Frahm
- Scarlett Gibb
- Marcia Hahn
- Dan Hall
- Della Hann
- Robert Hammond
- Steve Hausman
- Cynthia Lassnoff
- Michael Loewe
- Pamela Mayer
- Michael Martin
- Madeline Monheit
- Masimax
- Oliver (Pete) Morton
- Tracy Orr
- Richard Panniers
- Chuck Selden
- Everett Sinnett
- Donald Tiedemann
- Sherry Zucker



Breakout Sessions

■ Reminders

- ▶ Please fill out the evaluation forms
- ▶ A description of each breakout session is in your folder. The different rooms are due to videotaping requirements
- ▶ Tight Schedule - please finish each session promptly
- ▶ There will be a Q&A session at the conclusion in this auditorium at 12:15 p.m.
- ▶ The sessions are being videocast and archived so you can see the ones you missed later (in the Auditorium and Balcony A)
- ▶ The presentation slides will be available on the website in the near future so only limited numbers of copies were printed
- ▶ Please try to avoid room E1/E2 - NIGMS Council in session



eRA: What's in it for me?
Symposium Room Assignments

Balcony A
Session 1-Grant Folder
Session 2-Closeout
Session 3-Pop Tracking

Balcony C
Session 1-Closeout
Session 2-e-SNAP
Session 3-Closeout

Room A
Session 1-3
Review

Auditorium
Plenary Session
Session 1-e-SNAP
Session 2-ECB/QVR
Session 3-ICSTORE
Q&A

Breakout Sessions:
1-10:20 a.m.
2-11:00 a.m.
3-11:40 a.m.

Room C1/C2
Session 1-Pop Tracking
Session 2-Pop Tracking
Session 3-ECB/QVR


Room D
Session 1-ECB/QVR
Session 2-Grant Folder
Session 3-Grant Folder

Room G1/G2
Session 1-ICSTORE
Session 2-ICSTORE
Session 3-e-SNAP

192) POSTER BOARD FACES
SCALE 0 5' 10' 20'
Breda EXPOSITION SERVICES



electronic Research Administration (eRA): **What's in it for me?**



e-SNAP ♦ ICSTORE
Scanning ♦ Program Portal
Folder ♦ Grants Closeout
R ♦ Population Tracking
Internet Assisted Review



**Come learn more about
what eRA can do for you.**



Friday, May 10, 2002 • 8:30 a.m. to 1 p.m. • Natcher Conference Center
For more information and to register online, visit the eRA web site at: <http://era.nih.gov>

Please contact Lyn Albrecht at 301-451-5954 or askera@od.nih.gov if you need
sign language interpretation or any other accommodation.

