

**NIH
Research Supplements
to
Promote Diversity**

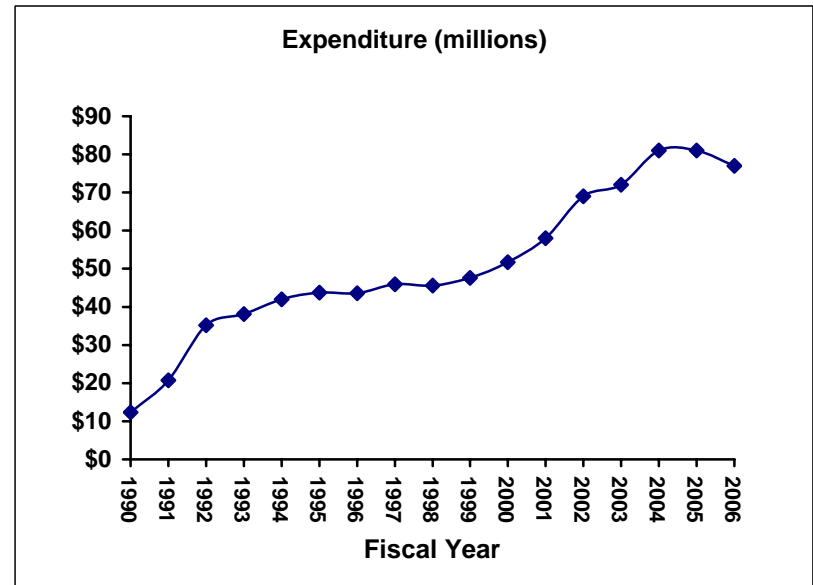
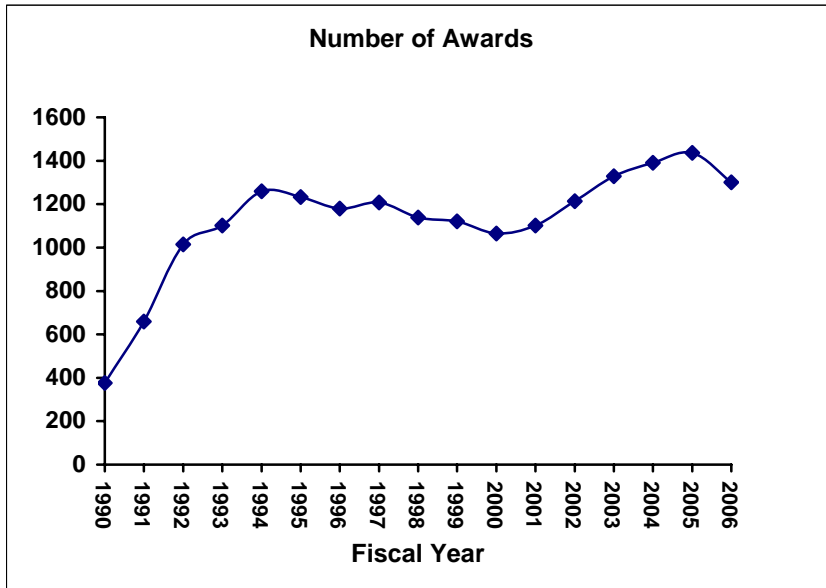
Fiscal Year 2006

NIH Office of Extramural Research: Prepared July 2007

NIH-WIDE TRENDS

SUPPLEMENTS TO INDIVIDUALS FROM UNDERREPRESENTED GROUPS OR DISADVANTAGED BACKGROUND

FISCAL YEARS 1990-2006



AWARDS FROM INSTITUTES AND CENTERS

SUPPLEMENTS TO INDIVIDUALS FROM UNDERREPRESENTED GROUPS OR DISADVANTAGED BACKGROUND

FISCAL YEAR 2006

	<u>New Awards</u>		<u>Continuing Awards</u>		<u>Total Awards</u>	
	Number	Amount	Number	Amount	Number	Amount
FIC	1	\$43,473	0	0	1	\$43,473
NCCAM**	3	\$144,055	2	\$59,095	5	\$203,150
NCI	65	\$4,503,498	116	\$7,890,519	181	\$12,394,017
NCMHD	0	0	0	0	0	0
NCRR	5	\$582,506	7	\$331,026	12	\$913,532
NEI	1	\$92,131	23	\$1,462,302	24	\$1,554,433
NHGRI	2	\$201,511	1	\$5,187	3	\$206,698
NHLBI	83	\$5,031,200	99	\$6,043,598	182	\$11,074,798
NIA	23	\$1,395,201	31	\$2,604,567	54	\$3,999,768
NIAAA	8	\$534,493	12	\$949,592	20	\$1,484,085
NIAID	49	\$2,054,390	83	\$4,548,381	132	\$6,602,771
NIAMS	16	\$733,457	13	\$754,205	29	\$1,487,662
NIBIB	12	\$591,520	10	\$651,526	22	\$1,243,046
NICHD	21	\$1,270,951	51	\$4,033,296	72	\$5,304,247
NIDA	38	\$2,195,646	38	\$2,105,649	76	\$4,301,295
NIDCD	9	\$290,689	5	\$186,157	14	\$476,846
NIDCR	8	\$399,128	1	\$44,346	9	\$443,474
NIDDK	54	\$3,582,437	50	\$3,618,253	104	\$7,200,690
NIEHS	15	\$695,750	12	\$763,833	27	1459583
NIGMS	107	\$4,582,416	87	\$3,991,490	194	\$8,573,906
NIMH	24	\$1,776,287	31	\$1,956,950	55	\$3,733,237
NINDS	42	\$1,592,882	32	\$1,898,231	74	\$3,491,113
NINR	7	\$264,684	3	\$196,731	10	\$461,415
NLM	0	\$0	1	\$72,705	1	\$72,705
ALL ICs	593	\$32,558,305	708	\$44,167,639	1301	\$76,725,944

**Includes one award co-funded by the Office of Dietary Supplements, OD

AWARD RATE FOR NEW APPLICATIONS

SUPPLEMENTS TO INDIVIDUALS FROM UNDERREPRESENTED GROUPS OR DISADVANTAGED BACKGROUND

FISCAL YEAR 2006*

	Applications	New Awards	Percent Awarded
FIC	1	1	100%
NCCAM	5	3	60%
NCI	109	65	60%
NCMHD	0	0	—
NCRR	6	5	83%
NEI	0	1	—
NHGRI	2	2	100%
NHLBI	93	83	89%
NIA	51	23	45%
NIAAA	14	8	57%
NIAID	80	49	61%
NIAMS	16	16	100%
NIBIB	16	12	75%
NICHD	29	21	72%
NIDA	49	38	78%
NIDCD	12	9	75%
NIDCR	10	8	80%
NIDDK	75	54	72%
NIEHS	17	15	88%
NIGMS	143	107	75%
NIMH	39	24	62%
NINDS	48	42	88%
NINR	10	7	70%
NLM	0	0	—
ALL ICs	789	593	75%

*Unawarded applications may have been pending at the end of FY2006.

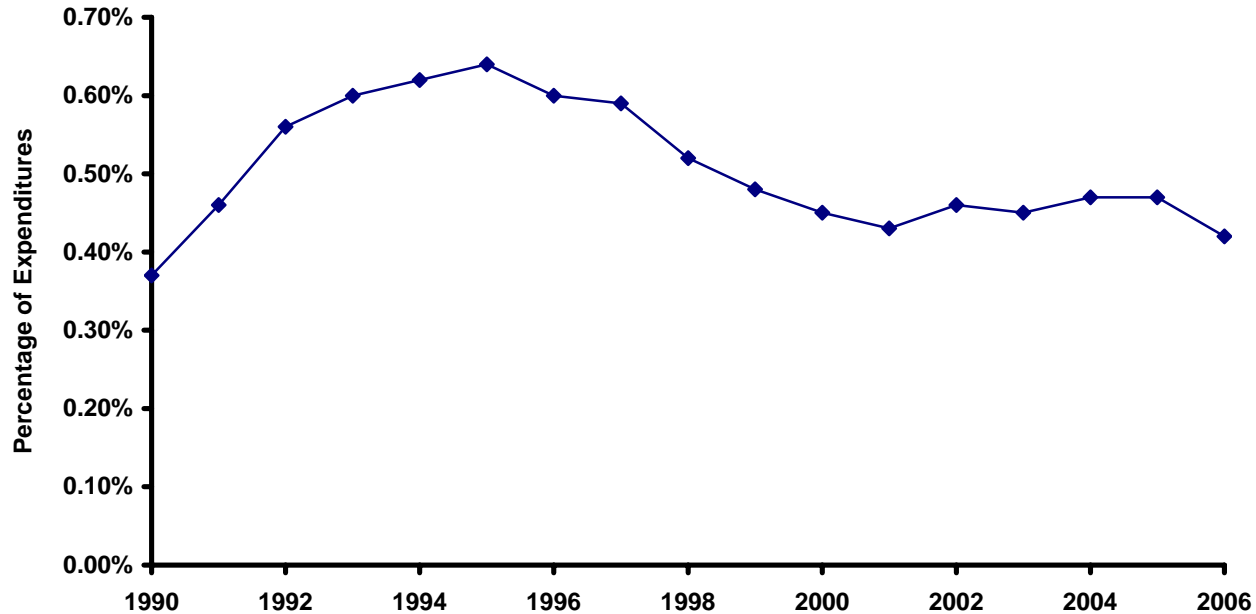
FRACTION OF EXPENDITURES FOR ELIGIBLE RESEARCH GRANT AWARDS*
SUPPLEMENTS TO INDIVIDUALS FROM UNDERREPRESENTED GROUPS
OR DISADVANTAGED BACKGROUND
FISCAL YEAR 2006

	Supplement Awards	All Eligible Parent Awards	Percentage
FIC	\$43,473	\$21,813,065	0.20%
NCCAM	\$203,150	\$88,425,750	0.23%
NCI	\$12,394,017	\$2,904,421,012	0.43%
NCMHD	0	\$89,596,602	0.00%
NCRR	\$913,532	\$590,582,615	0.15%
NEI	\$1,554,433	\$507,601,020	0.31%
NHGRI	\$206,698	\$369,488,364	0.06%
NHLBI	\$11,074,798	\$2,192,904,867	0.51%
NIA	\$3,999,768	\$780,281,699	0.51%
NIAAA	\$1,484,085	\$299,979,248	0.49%
NIAID	\$6,602,771	\$2,482,060,543	0.27%
NIAMS	\$1,487,662	\$382,362,211	0.39%
NIBIB	\$1,243,046	\$257,720,750	0.48%
NICHD	\$5,304,247	\$824,710,622	0.64%
NIDA	\$4,301,295	\$676,474,079	0.64%
NIDCD	\$476,846	\$290,496,432	0.16%
NIDCR	\$443,474	\$254,972,509	0.17%
NIDDK	\$7,200,690	\$1,323,787,288	0.54%
NIHES	1459583	\$272,748,720	0.54%
NIGMS	\$8,573,906	\$1,592,007,161	0.54%
NIMH	\$3,733,237	\$928,375,100	0.40%
NINDS	\$3,491,113	\$1,191,687,111	0.29%
NINR	\$461,415	\$108,567,827	0.43%
NLM	\$72,705	\$28,416,022	0.26%
ALL ICs	\$76,725,944	\$18,459,480,617	0.42%

*Eligible grant mechanisms: R01, R03, R10, R15, R18, R21, R22, R24, R35, R37, R41, R42, R43, R44, P01, P20, P30, P40, P41, P50, P51, P60, U01, U10, U19, U41, U42, U54, S06.

**NIH-WIDE TRENDS
EXPENDITURES AS PERCENTAGE OF
EXPENDITURES FOR ELIGIBLE RESEARCH GRANT AWARDS*
SUPPLEMENTS TO INDIVIDUALS FROM UNDERREPRESENTED GROUPS
OR DISADVANTAGED BACKGROUND**

FISCAL YEARS 1990-2006



*Eligible grant mechanisms: R01, R03, R10, R15, R18, R21, R22, R24, R35, R37, R41, R42, R43, R44, P01, P20, P30, P40, P41, P50, P51, P60, U01, U10, U19, U41, U42, U54, S06.

CAREER LEVELS OF INDIVIDUALS APPOINTED

SUPPLEMENTS TO INDIVIDUALS FROM UNDERREPRESENTED GROUPS OR DISADVANTAGED BACKGROUND

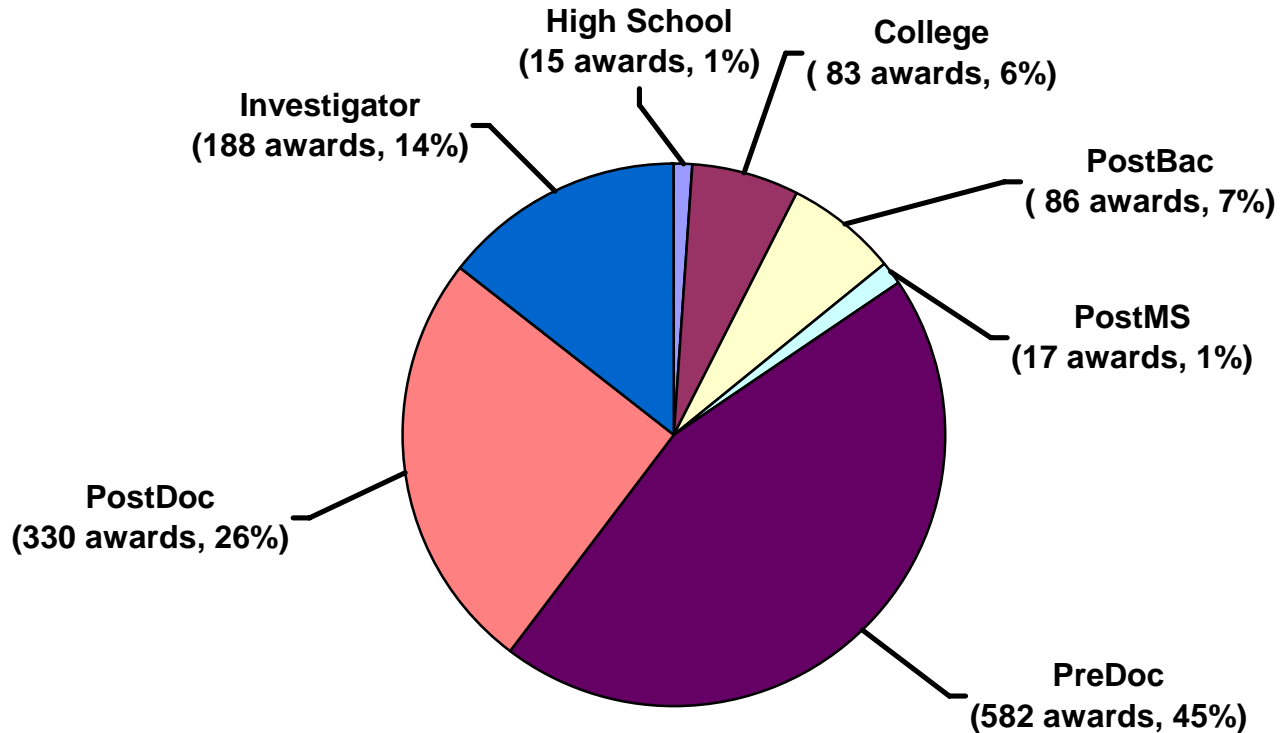
FISCAL YEAR 2006

	High School	College	PostBac	PostMS	PreDoc	PostDoc	Investigator	Total
FIC	0	0	0	0	1		0	1
NCCAM	0	0	1	0	1	1	2	5
NCI	2	8	4	1	93	43	30	181
NCMHD	0	0	0	0	0	0	0	0
NCRR	0	0	0	0	7	3	2	12
NEI	0	0	2	0	7	15	0	24
NHGRI	1	0	0	0	0	2	0	3
NHLBI	3	12	11	1	75	51	29	182
NIA	0	3	4	0	17	14	16	54
NIAAA	0	2	0	0	8	7	3	20
NIAID	1	14	4	1	65	30	17	132
NIAMS	0	1	1	1	19	7	0	29
NIBIB	0	2	1	1	12	3	3	22
NICHD	1	2	20	4	8	15	22	72
NIDA	0	4	0	0	39	14	19	76
NIDCD	0	2	2	0	7	3	0	14
NIDCR	0	0	3	1	3	2	0	9
NIDDK	0	7	5	2	32	33	25	104
NIEHS	0	1	2	0	10	13	1	27
NIGMS	3	16	14	0	124	37	0	194
NIMH	1	2	1	3	19	14	15	55
NINDS	3	5	9	0	32	21	4	74
NINR	0	2	2	2	2	2	0	10
NLM	0	0	0	0	1	0	0	1
ALL ICs	15	83	86	17	582	330	188	1301

DISTRIBUTION OF AWARDS BY CAREER LEVEL

SUPPLEMENTS TO INDIVIDUALS FROM UNDERREPRESENTED GROUPS OR DISADVANTAGED BACKGROUND

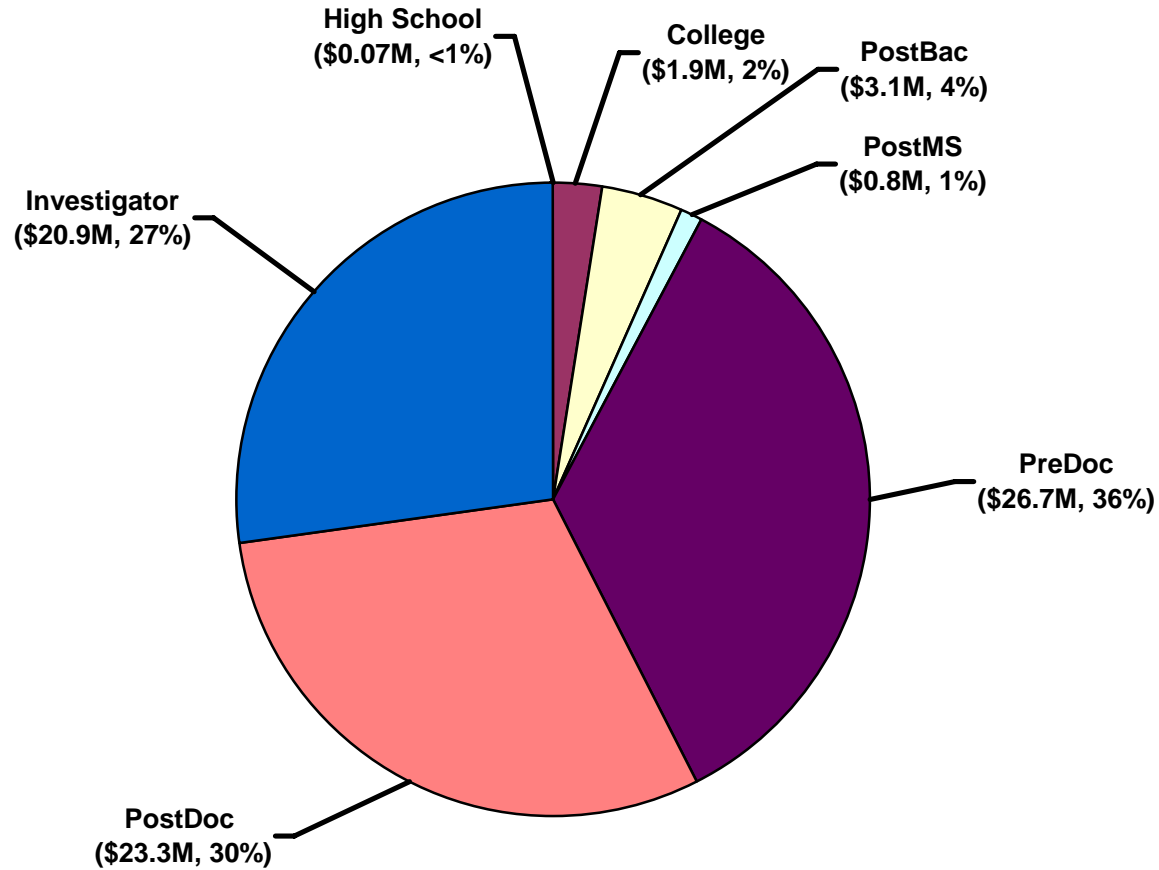
FISCAL YEAR 2006



DISTRIBUTION OF EXPENDITURES BY CAREER LEVEL

SUPPLEMENTS TO INDIVIDUALS FROM UNDERREPRESENTED GROUPS OR DISADVANTAGED BACKGROUND

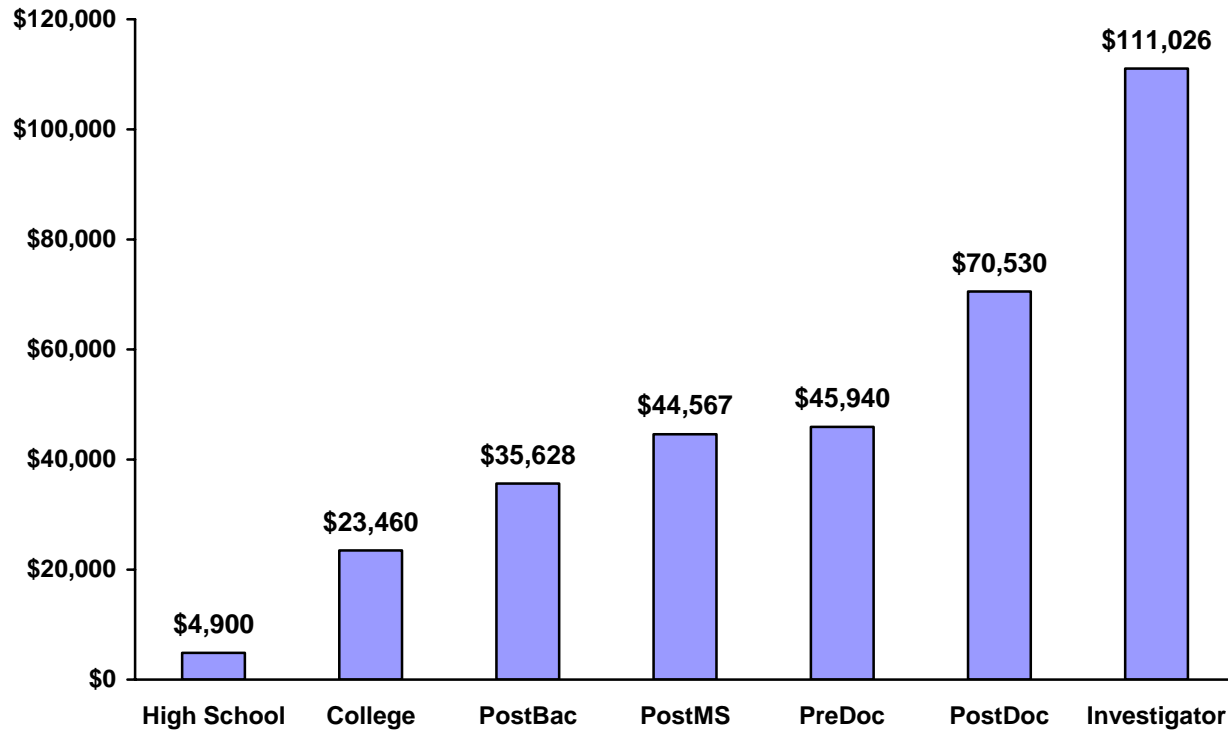
FISCAL YEAR 2006



AVERAGE AWARD SIZE

SUPPLEMENTS TO INDIVIDUALS FROM UNDERREPRESENTED GROUPS OR DISADVANTAGED BACKGROUND

FISCAL YEAR 2006



DISTRIBUTION OF AWARDS BY GROUP
SUPPLEMENTS TO INDIVIDUALS FROM UNDERREPRESENTED GROUPS
OR DISADVANTAGED BACKGROUND

FISCAL YEAR 2006

	Black	Hispanic	Native American	Pacific Islander	Other	Dis-advantaged	All Groups
FIC	0	1	0	0	0	0	1
NCCAM	2	2	1	0	0	0	5
NCI	79	82	6	7	6	1	181
NCMHD	0	0	0	0	0	0	0
NCRR	3	9	0	0	0	0	12
NEI	8	16	0	0	0	0	24
NHGRI	1	2	0	0	0	0	3
NHLBI	109	58	8	4	1	2	182
NIA	26	23	0	0	3	2	54
NIAAA	12	4	4	0	0	0	20
NIAID	54	59	7	1	11	0	132
NIAMS	16	12	0	1	0	0	29
NIBIB	11	10	1	0	0	0	22
NICHD	35	36	1	0	0	0	72
NIDA	43	26	1	2	4	0	76
NIDCD	5	5	1	2	1	0	14
NIDCR	6	2	0	0	0	1	9
NIDDK	53	47	3	0	1	0	104
NIHHS	14	8	2	0	3	0	27
NIGMS	88	85	7	14	0	0	194
NIMH	25	23	1	1	5	0	55
NINDS	31	31	3	6	3	0	74
NINR	4	4	1	1	0	0	10
NLM	1	0	0	0	0	0	1
ALL ICs	626	545	47	39	38	6	1301

DISTRIBUTION OF AWARDS BY GROUP AND CAREER LEVEL

SUPPLEMENTS TO INDIVIDUALS FROM UNDERREPRESENTED GROUPS OR DISADVANTAGED BACKGROUND

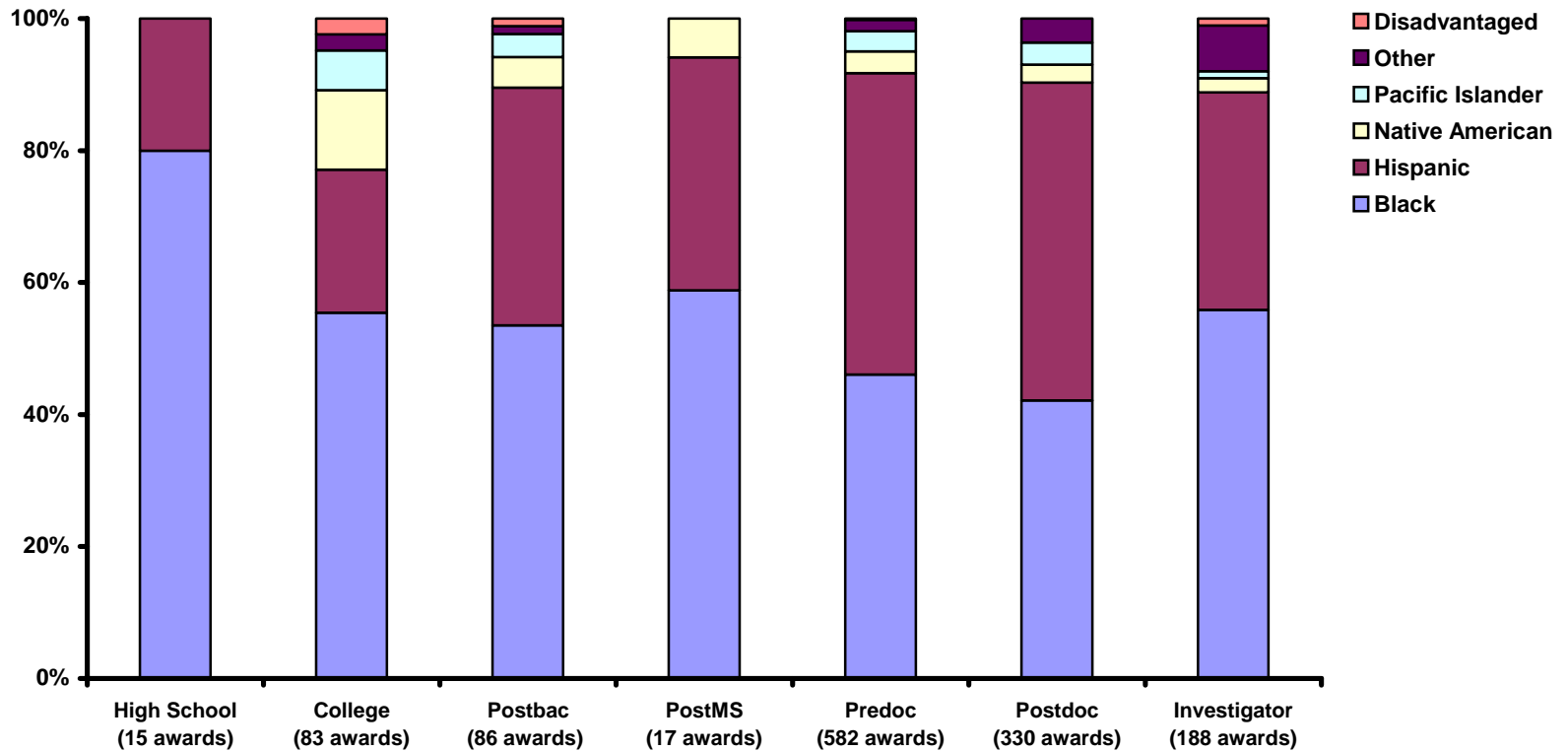
FISCAL YEAR 2006

	High School	College	Postbac	PostMS	Predoc	Postdoc	Investigator	All Levels
Black	12	46	46	10	268	139	105	626
Hispanic	3	18	31	6	266	159	62	545
Native American	0	10	4	1	19	9	4	47
Pacific Islander	0	5	3	0	18	11	2	39
Other Ethnic	0	2	1	0	10	12	13	38
Disadvantaged	0	2	1	0	1	0	2	6
All Groups	15	83	86	17	582	330	188	1301

AWARDS BY CAREER LEVEL

SUPPLEMENTS TO INDIVIDUALS FROM UNDERREPRESENTED GROUPS OR DISADVANTAGED BACKGROUND

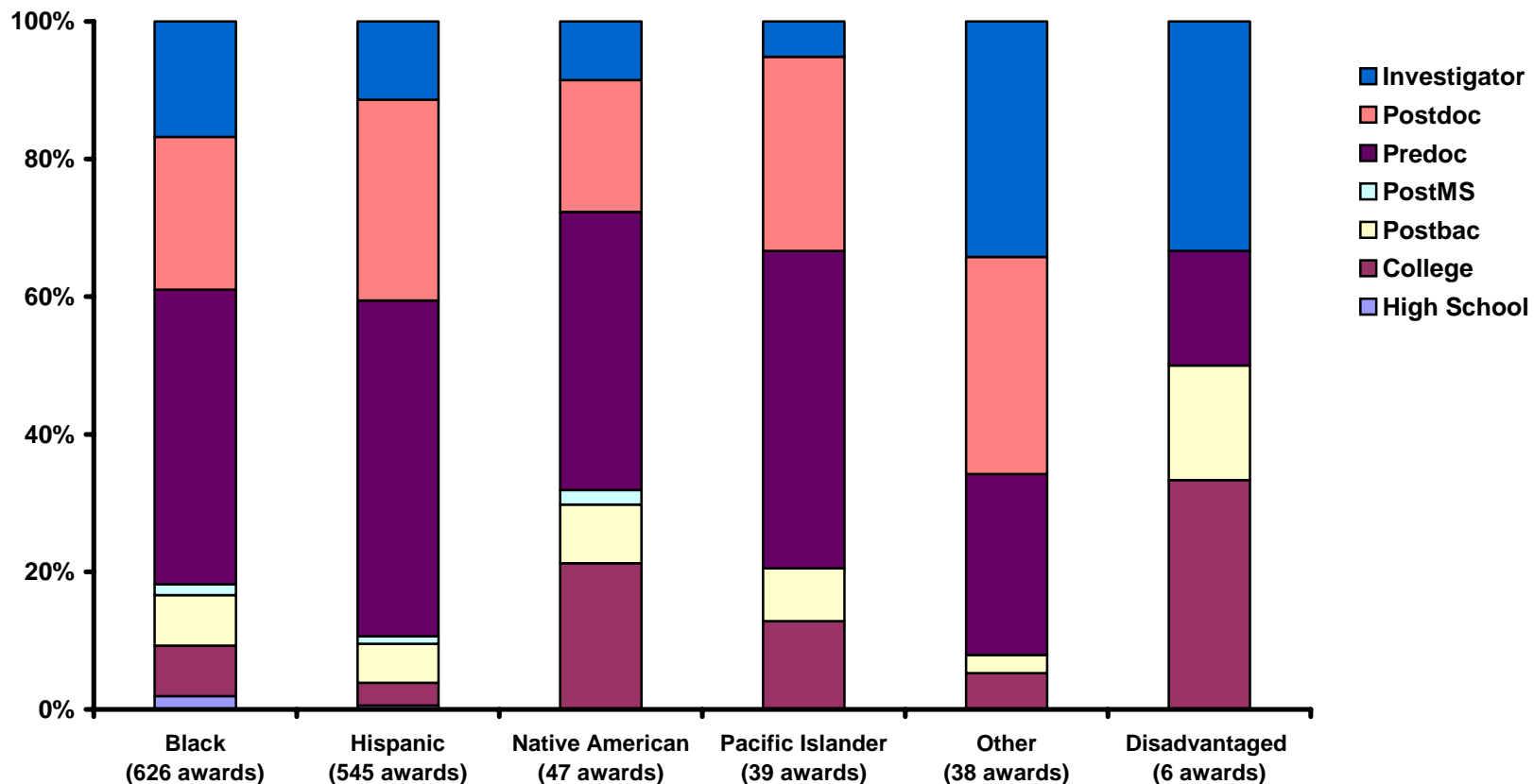
FISCAL YEAR 2006



AWARDS BY GROUP

SUPPLEMENTS TO INDIVIDUALS FROM UNDERREPRESENTED GROUPS OR DISADVANTAGED BACKGROUND

FISCAL YEAR 2006

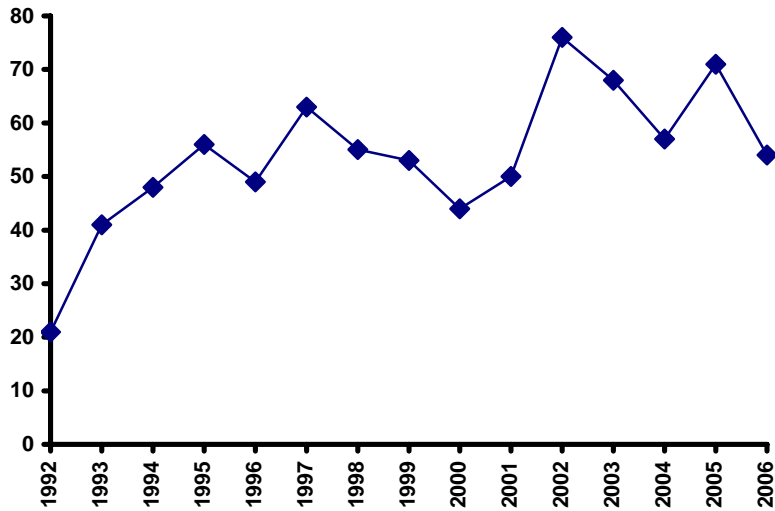


NIH-WIDE TRENDS

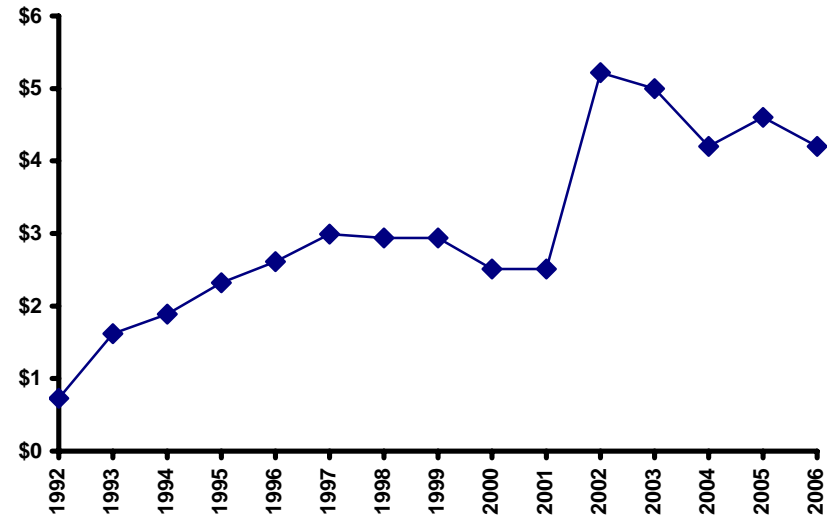
SUPPLEMENTS TO INDIVIDUALS WITH DISABILITIES

FISCAL YEARS 1992-2006

Number of Awards



Expenditure (millions)



AWARDS FROM INSTITUTES AND CENTERS

SUPPLEMENTS TO INDIVIDUALS WITH DISABILITIES

FISCAL YEAR 2006

	New Awards		Continuing Awards		All Awards	
	Number	Amount	Number	Amount	Number	Amount
FIC	0	\$0	0	\$0	0	0
NCCAM	0	\$0	0	\$0	0	0
NCI	0	\$0	6	\$533,860	6	533,860
NCMHD	0	\$0	0	\$0	0	0
NCRR	0	\$0	1	\$162,371	1	162,371
NEI	1	\$104,636	4	\$688,796	5	793,432
NHGRI	0	\$0	0	\$0	0	0
NHLBI	0	\$0	2	\$103,186	2	103,186
NIA	1	\$30,150	3	\$204,491	4	234,641
NIAAA	1	\$131,204	1	\$143,925	2	275,129
NIAID	0	\$0	4	\$197,969	4	197,969
NIAMS	0	\$0	1	\$62,386	1	62,386
NIBIB	0	\$0	0	\$0	0	0
NICHD	1	\$32,179	2	\$94,434	3	126,613
NIDA	0	\$0	0	\$0	0	0
NIDCD	3	\$141,344	3	\$278,977	6	420,341
NIDCR	1	\$40,765	0	\$0	1	40,765
NIDDK	1	\$39,209	1	\$85,914	2	125,123
NIEHS	0	\$0	0	\$0	0	0
NIGMS	5	\$201,084	2	\$52,153	7	253,237
NIMH	2	\$96,713	2	\$143,872	4	240,585
NINDS	2	\$242,153	4	\$396,230	6	638,383
NINR	0	\$0	0	\$0	0	0
NLM	0	\$0	0	\$0	0	0
ALL ICs	18	\$1,059,437	36	\$3,148,564	54	\$4,208,021

AWARD RATE FOR NEW APPLICATIONS
SUPPLEMENTS TO INDIVIDUALS WITH DISABILITIES
FISCAL YEAR 2006*

	Applications	New Awards	Percent Awarded
FIC	0	0	—
NCCAM	0	0	—
NCI	0	0	—
NCMHD	0	0	—
NCRR	0	0	—
NEI	0	1	**
NHGRI	0	0	—
NHLBI	0	0	—
NIA	1	1	100%
NIAAA	2	1	50%
NIAID	1	0	0%
NIAMS	0	0	—
NIBIB	0	0	—
NICHD	3	1	33%
NIDA	0	0	—
NIDCD	3	3	100%
NIDCR	1	1	100%
NIDDK	2	1	50%
NIEHS	0	0	—
NIGMS	6	5	83%
NIMH	3	2	67%
NINDS	2	2	100%
NINR	0	0	—
NLM	0	0	—
ALL ICs	24	18	75%

*Unawarded applications may have been pending at the end of the fiscal year.

**Application from FY 2005

TYPE OF DISABILITY AT SPECIFIC CAREER LEVELS

SUPPLEMENTS TO INDIVIDUALS WITH DISABILITIES

FISCAL YEAR 2006

	High School	College	Postbac	Post MS	Predoc	Postdoc	Investigator	All awards
Speech Impairment	0	0	0	0	0	0	0	0
Hearing Impairment	0	0	0	1	2	7	0	10
Vision Impairment	0	0	1	0	1	3	0	5
Missing Extremities	0	0	0	0	1	0	0	1
Ortho Impairments	0	1	0	0	1	1	2	5
Partial Paralysis	0	1	0	0	2	3	4	10
Complete Paralysis	0	0	0	0	0	0	0	0
Other Impairments	0	1	1	0	14	4	3	23
All Conditions	0	3	2	1	21	18	9	54

CAREER LEVELS OF INDIVIDUALS APPOINTED

SUPPLEMENTS TO INDIVIDUALS WITH DISABILITIES

FY 2006

