

NIH Scientific Program Director

Ronald Margolis, Ph.D.

Senior Advisor, Molecular Endocrinology
Division of Diabetes, Endocrinology, and
Metabolic Diseases

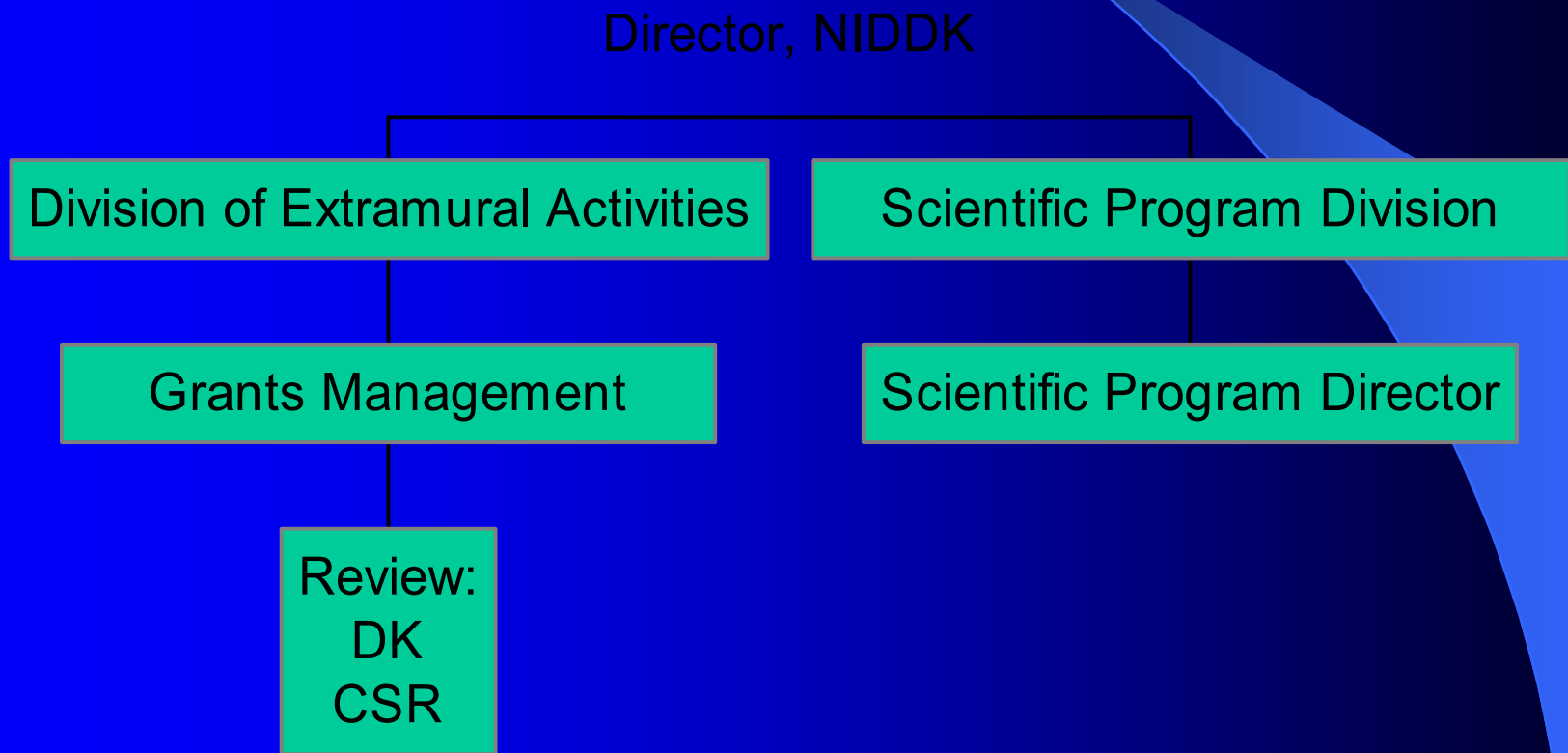
National Institute of Diabetes, Digestive, and
Kidney Diseases (NIDDK)

Program Official-*Definition*

“The NIH official responsible for the programmatic, scientific and/or technical aspects of a grant.”

-from the NIH Program Administrators' Handbook

Hierarchy of NIH Institute Extramural Organization



Overview of Role(s)

- Maintains current knowledge of:
 - Science relevant to portfolio
 - Regulations for grants and contracts
 - Operating procedures at the HHS, NIH, and NIDDK level
 - Key contacts for obtaining policy and procedural information

Specific Roles of the PD

- Main contact with PI's
- Advice on submission: deadlines, ICs, SRGs
- Observer at peer review of grants in portfolio
- Read and send summary statements
- Review and approval of yearly progress reports prior to award
- Review and approval of resolution of scientific overlap, and human and animal use concerns, esp. for new and competing grants
- Presentation of portfolio at National Advisory Council
- Preparation of paymemos

Specific Roles of PD (con't)

- Advances
- Program management
- Trans-DK and/or Trans-NIH committees and working groups
- Training
- Member of Cooperative Agreement steering committee, as needed
- Initiatives Development

Initiative Development

- Maintain broad knowledge of science and technology relevant to program and institute mission
- Develop contacts with extramural scientific community
- Attend relevant scientific/technical meetings and conferences
- Prepare and implement initiatives as RFAs, RFPs, PAs, as needed working with Review and Grants Management
- Hold workshops, as appropriate, to foster further initiative development

Initiatives

- RFA: DK02-031 (<http://grants.nih.gov/grants/guide/rfa-files/RFA-DK-02-031.html>)
- PA: PA02-008 (<http://grants.nih.gov/grants/guide/pa-files/PA-02-008.html>)
- RFP: Published in Commerce Daily (<http://cbdnet.access.gpo.gov/>)
- Workshop: Beta Cell Biology (<http://www.betacellbiology.niddk.nih.gov/>)

Policies

- Program Administrator's Handbook

- http://grants.nih.gov/grants/policy/nihgps_2001

The definitive (online) source of information for the PD.

- Searchable
- Table of Contents

Program Administrators' Handbook: Contents

- **Part I: NIH Grants—General Information**
- **Part II: Terms and Conditions of NIH Grant Awards**
- **Part III: Points of Contact**

Program Director – Summary

- Point of contact for research community
- Maintains scientific knowledge base
- Understands policy and procedures
- Responsive to new tasks
- Understands IC, NIH, and PHS directives
- Interface with Council
- Able to leap tall buildings in a single bound

Endocrinology/Diabetes Research at NIDDK

- Nuclear hormone receptor superfamily
- Cell surface receptors and G-proteins
- Cell signaling
- Neuroendocrinology/HPA/HPT axis
- Bone and mineral research (osteoporosis)
- Stress/Adrenal function
- Growth factors
- Types 1 and 2 Diabetes and Complications
- Obesity/Neuropeptides
- Thyroid Disease