

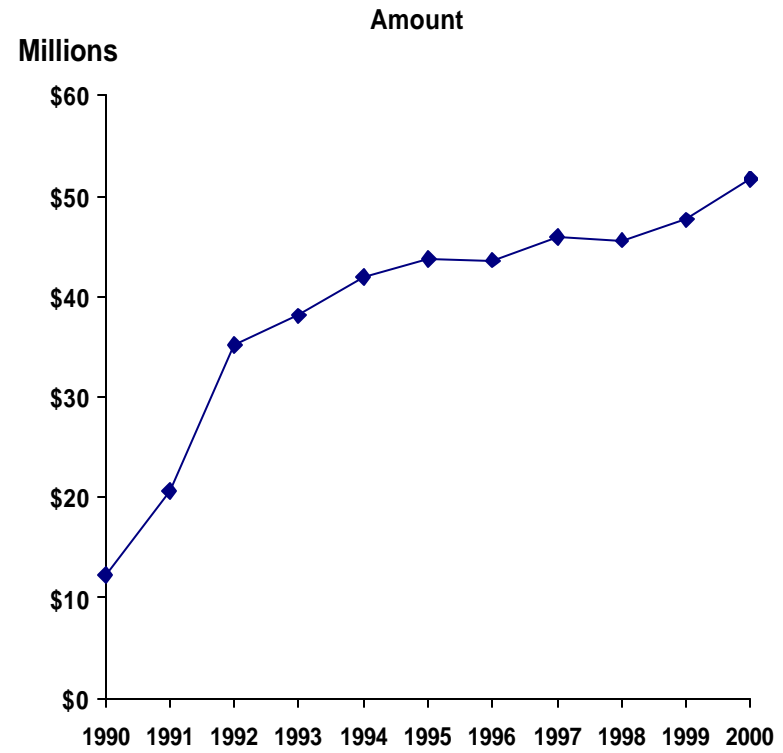
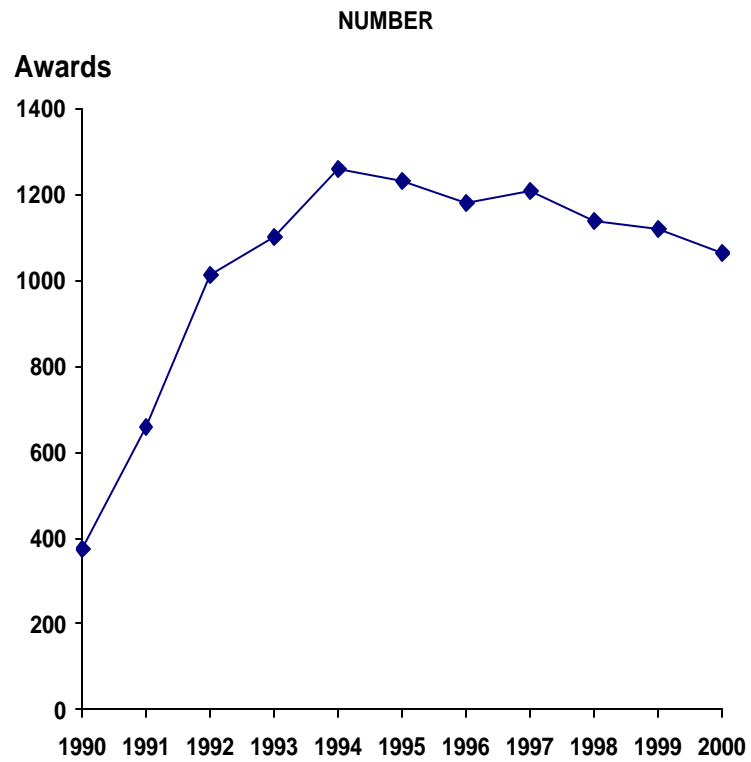
**NIH**  
**Research Supplements**  
**for**  
**Underrepresented Minorities\***  
**and**  
**Individuals with Disabilities**

**Fiscal Year 2000**

**\*Grants Eligible for Minority Supplements include: R01, R03, R10, R15, R18, R21, R22, R24, R29,  
R35, R37, P01, P20, P30, P40, P41, P50, P51, P60, U01, U10, U19, U41, U42.**

# TRENDS IN MINORITY SUPPLEMENTS

Fiscal years 1990-2000



**NEW AND CONTINUING MINORITY SUPPLEMENTS AWARDED  
BY INSTITUTE OR CENTER**

Fiscal year 2000

	New Awards		Continuing Awards		Total Awards	
	Number	Amount	Number	Amount	Number	Amount
NHLBI	61	\$3,957,436	72	\$3,883,983	133	\$7,841,419
NCI	39	\$1,946,417	103	\$5,521,621	142	\$7,468,038
NIMH	29	\$1,478,724	67	\$3,680,134	96	\$5,158,858
NIGMS	70	\$2,644,630	55	\$2,390,264	125	\$5,034,894
NIAID	42	\$1,517,386	57	\$2,426,977	99	\$3,944,363
NIDDK	42	\$2,068,110	36	\$1,670,791	78	\$3,738,901
NIDA	30	\$1,702,694	41	\$1,644,070	71	\$3,346,764
NINDS	41	\$2,045,107	24	\$1,114,959	65	\$3,160,066
NIA	24	\$1,551,373	25	\$1,544,231	49	\$3,095,604
NIAAA	18	\$826,966	14	\$713,157	32	\$1,540,123
NIAMS	17	\$683,361	12	\$655,682	29	\$1,339,043
NICHD	23	\$733,229	22	\$580,507	45	\$1,313,736
NIDCR	8	\$523,466	14	\$721,469	22	\$1,244,935
NEI	8	\$332,893	11	\$488,112	19	\$821,005
NINR	7	\$432,052	7	\$386,242	14	\$818,294
NIEHS	8	\$269,616	5	\$277,865	13	\$547,481
NIDCD	8	\$298,098	8	\$195,144	16	\$493,242
NCRR	4	\$136,389	6	\$288,567	10	\$424,956
NHGRI	3	\$31,274	3	\$212,372	6	\$243,646
NCCAM	1	\$53,698	0	\$0	1	\$53,698
<b>TOTAL</b>	<b>483</b>	<b>\$ 23,232,919</b>	<b>582</b>	<b>\$28,396,147</b>	<b>1065</b>	<b>\$ 51,629,066</b>

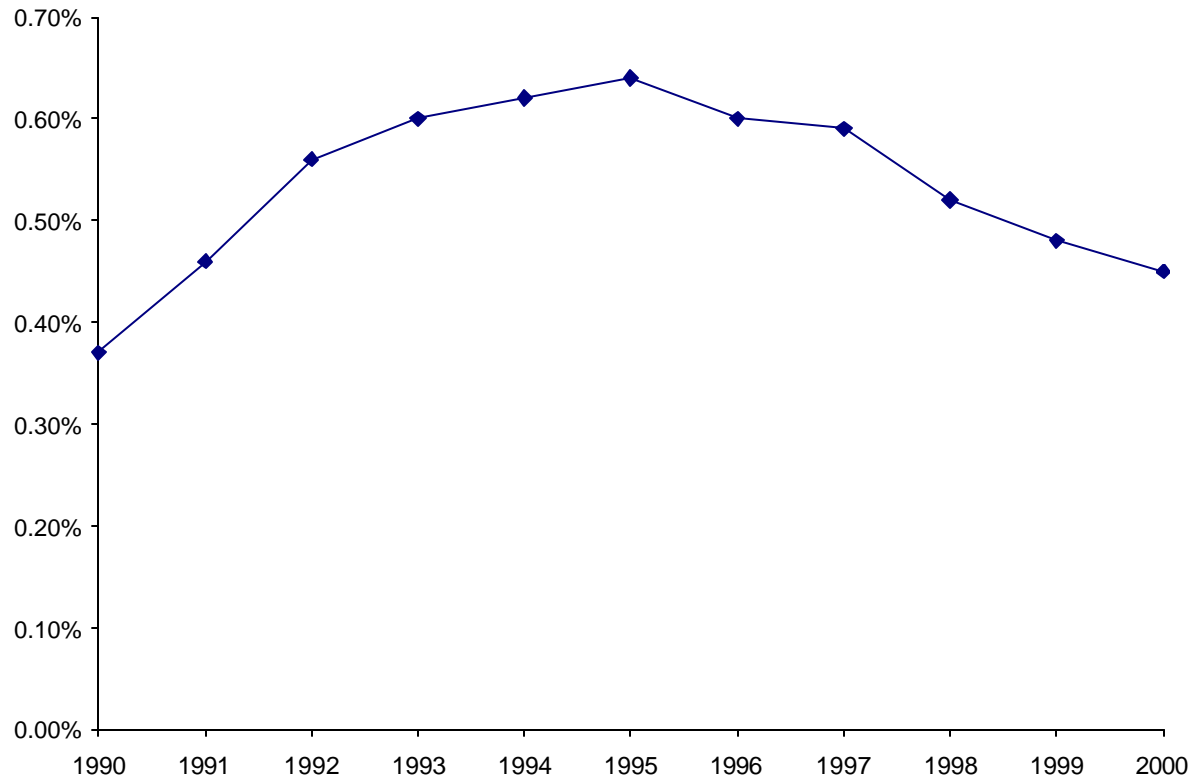
**MINORITY SUPPLEMENT EXPENDITURES  
AS A FRACTION OF EXPENDITURES FOR ELIGIBLE MECHANISMS**

FISCAL YEAR 2002

	Supplement Awards	All Eligible Awards	Percentage
NINR	\$818,294	\$71,857,982	1.14%
NIMH	\$5,158,858	\$665,331,344	0.78%
NIDCR	\$1,244,935	\$170,377,356	0.73%
NIAAA	\$1,540,123	\$216,036,008	0.71%
NIDA	\$3,346,764	\$477,461,585	0.70%
NIA	\$3,095,604	\$514,453,811	0.60%
NHLBI	\$7,841,419	\$1,464,457,678	0.54%
NIAMS	\$1,339,043	\$262,497,067	0.51%
NIGMS	\$5,034,894	\$1,042,118,689	0.48%
NIDDK	\$3,738,901	\$893,806,964	0.42%
NINDS	\$3,160,066	\$790,429,485	0.40%
NCI	\$7,468,038	\$1,982,466,733	0.38%
NIAID	\$3,944,363	\$1,227,505,473	0.32%
NIEHS	\$547,481	\$188,363,979	0.29%
NIDCD	\$493,242	\$199,184,037	0.25%
NICHD	\$1,313,736	\$569,667,533	0.23%
NEI	\$821,005	\$361,747,215	0.23%
NHGRI	\$243,646	\$108,797,235	0.22%
NCRR	\$424,956	\$309,712,292	0.14%
NCCAM	\$53,698	\$47,917,818	0.11%
<b>TOTAL</b>	<b>\$51,629,066</b>	<b>\$11,564,190,284</b>	<b>0.45%</b>

# NIH-WIDE TRENDS FOR MINORITY SUPPLEMENTS AS A PERCENTAGE OF EXPENDITURES FOR ELIGIBLE RESEARCH GRANTS

FISCAL YEARS 1990 - 2000



**AWARD RATE OF NEW APPLICATIONS FOR  
MINORITY SUPPLEMENTS RECEIVED AND AWARDED**

**FISCAL YEAR 2000\***

	<b>Applications Received</b>	<b>Applications Awarded</b>	<b>Percent Awarded</b>
<b>NCCAM</b>	<b>1</b>	<b>1</b>	<b>100%</b>
<b>NCRR</b>	<b>4</b>	<b>4</b>	<b>100%</b>
<b>NEI</b>	<b>8</b>	<b>8</b>	<b>100%</b>
<b>NHGRI</b>	<b>3</b>	<b>3</b>	<b>100%</b>
<b>NIAAA</b>	<b>18</b>	<b>18</b>	<b>100%</b>
<b>NIDCR</b>	<b>8</b>	<b>8</b>	<b>100%</b>
<b>NIEHS</b>	<b>8</b>	<b>8</b>	<b>100%</b>
<b>NINR</b>	<b>7</b>	<b>7</b>	<b>100%</b>
<b>NIMH</b>	<b>30</b>	<b>29</b>	<b>97%</b>
<b>NHLBI</b>	<b>68</b>	<b>61</b>	<b>90%</b>
<b>NIAMS</b>	<b>19</b>	<b>17</b>	<b>89%</b>
<b>NINDS</b>	<b>46</b>	<b>41</b>	<b>89%</b>
<b>NIDCD</b>	<b>9</b>	<b>8</b>	<b>89%</b>
<b>NCI</b>	<b>45</b>	<b>39</b>	<b>87%</b>
<b>NIGMS</b>	<b>82</b>	<b>70</b>	<b>85%</b>
<b>NIAID</b>	<b>51</b>	<b>42</b>	<b>82%</b>
<b>NIDDK</b>	<b>51</b>	<b>42</b>	<b>82%</b>
<b>NIDA</b>	<b>46</b>	<b>30</b>	<b>65%</b>
<b>NICHD</b>	<b>38</b>	<b>23</b>	<b>61%</b>
<b>NIA</b>	<b>47</b>	<b>24</b>	<b>51%</b>
<b>TOTAL</b>	<b>589</b>	<b>483</b>	<b>82%</b>

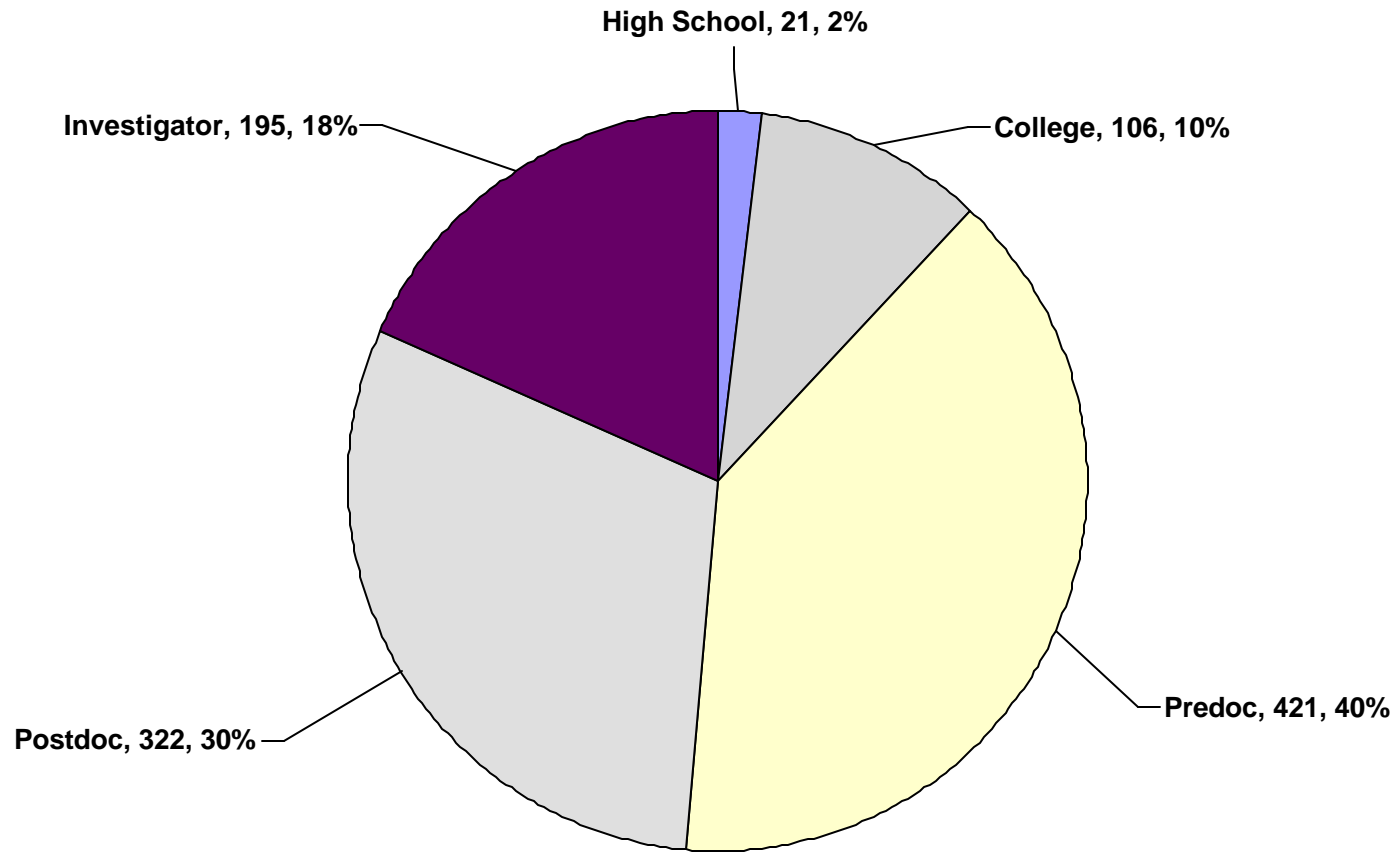
\*UNAWARDED APPLICATIONS MAY HAVE BEEN PENDING AT THE END OF FY2000

**CAREER LEVELS OF INDIVIDUALS APPOINTED TO MINORITY SUPPLEMENTS  
(ALL AWARDS, NEW AND CONTINUING)**

**FISCAL YEAR 2000**

	High School	College	Predoc	Postdoc	Investigator	TOTAL
NCI	4	8	50	55	25	142
NHLBI	0	17	45	40	31	133
NIGMS	3	8	72	36	6	125
NIAID	1	11	45	33	9	99
NIMH	0	6	33	35	22	96
NIDDK	2	9	28	25	14	78
NIDA	0	2	33	19	17	71
NINDS	2	12	25	20	6	65
NIA	0	1	19	9	20	49
NICHD	0	8	26	7	4	45
NIAAA	0	9	2	12	9	32
NIAMS	7	1	6	10	5	29
NIDCR	2	3	6	4	7	22
NEI	0	4	5	7	3	19
NIDCD	0	3	9	4	0	16
NINR	0	1	4	0	9	14
NIEHS	0	2	7	3	1	13
NCRR	0	1	4	1	4	10
NHGRI	0	0	2	1	3	6
NCCAM	0	0	0	1	0	1
<b>TOTAL</b>	<b>21</b>	<b>106</b>	<b>421</b>	<b>322</b>	<b>195</b>	<b>1065</b>

**CAREER LEVELS OF INDIVIDUALS  
APPOINTED TO MINORITY SUPPLEMENTS  
FISCAL YEAR 2000**





**RACIAL/ETHNIC CLASSIFICATION OF INDIVIDUALS  
APPOINTED TO MINORITY SUPPLEMENTS  
(ALL AWARDS, NEW AND CONTINUING)**

**FISCAL YEAR 2000**

	African American	Hispanic	Native American	Pacific Islander	Other	TOTAL
NCI	80	54	7	1		142
NHLBI	87	43	3			133
NIGMS	55	63	2	5		125
NIAID	45	49	0	5		99
NIMH	38	37	5	3	13	96
NIDDK	42	30	2	4		78
NIDA	46	21	2	2		71
NINDS	30	27		5	3	65
NIA	25	18	4	1	1	49
NICHD	28	11	1	5		45
NIAAA	15	13	2	2		32
NIAMS	20	8		1		29
NIDCR	13	7	1	1		22
NEI	11	5	2		1	19
NIDCD	8	7	1			16
NINR	10	1	2	1		14
NIEHS	4	7	2			13
NCRR	4	5	1			10
NHGRI	5	1				6
NCCAM				1		1
<b>TOTAL</b>	<b>566</b>	<b>407</b>	<b>37</b>	<b>37</b>	<b>18</b>	<b>1065</b>

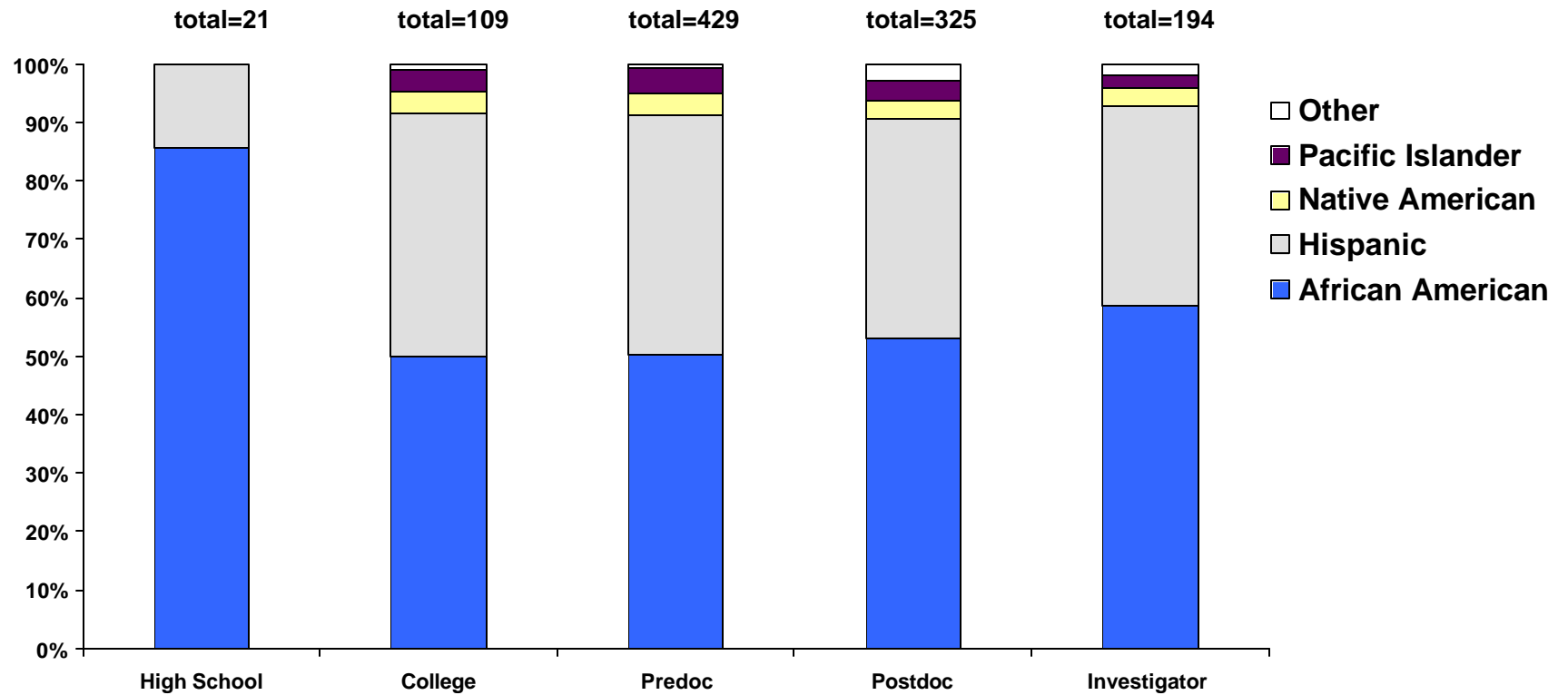
**RACE/ETHNICITY BY CAREER LEVEL OF INDIVIDUALS  
APPOINTED TO MINORITY SUPPLEMENTS  
(ALL AWARDS, NEW AND CONTINUING)**

**FISCAL YEAR 2000**

	<b>High School</b>	<b>College</b>	<b>Predoc</b>	<b>Postdoc</b>	<b>Investigator</b>	<b>TOTAL</b>
<b>African American</b>	18	53	210	172	114	567
<b>Hispanic</b>	3	44	172	122	66	407
<b>Native American</b>	0	4	16	11	6	37
<b>Pacific Islander</b>	0	4	18	11	4	37
<b>Other</b>	0	1	3	9	4	17
<b>All Groups</b>	21	106	419	325	194	1065

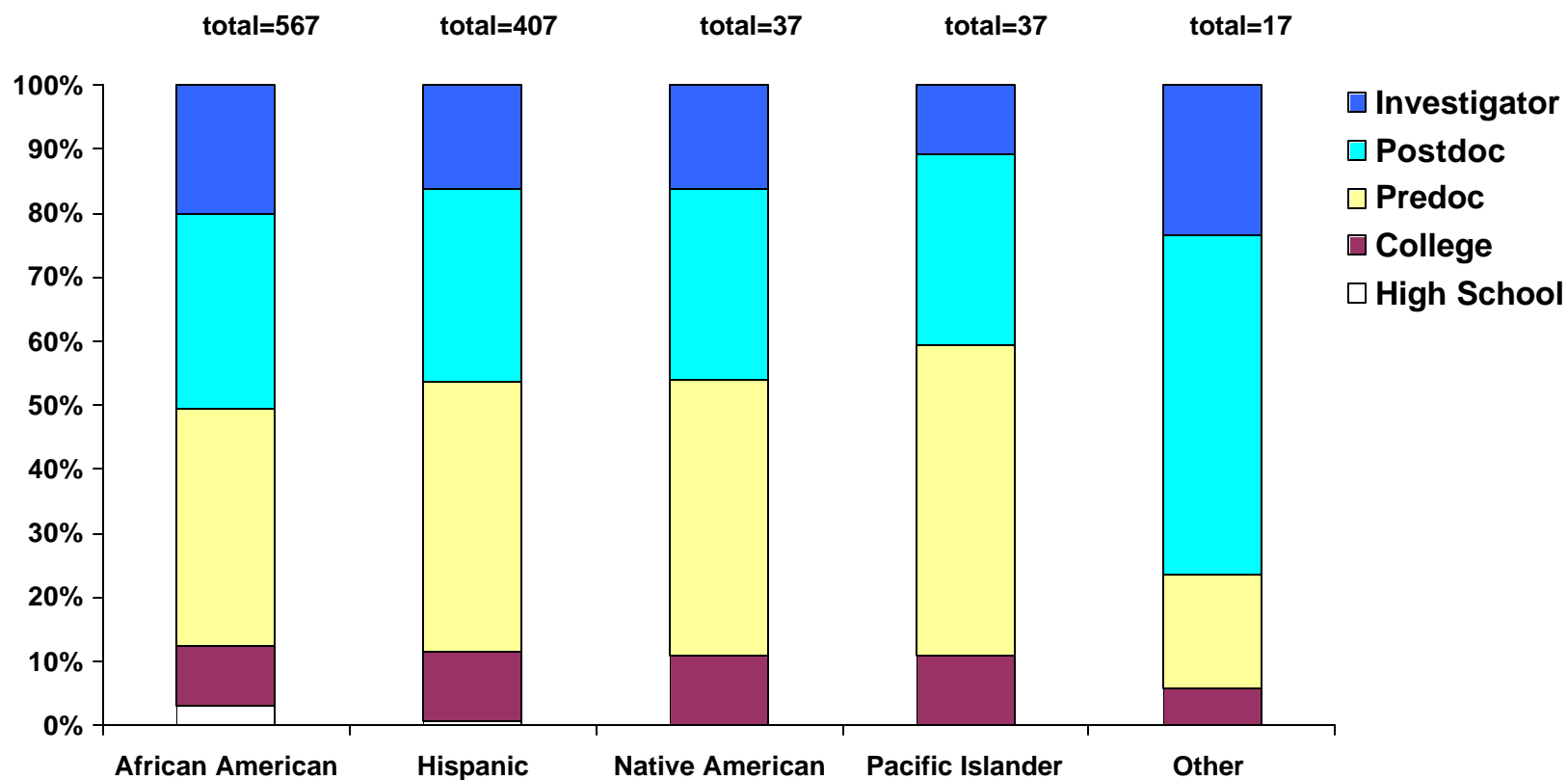
# RACE/ETHNICITY BY CAREER LEVEL OF INDIVIDUALS APPOINTED TO MINORITY SUPPLEMENTS

FISCAL YEAR 2000



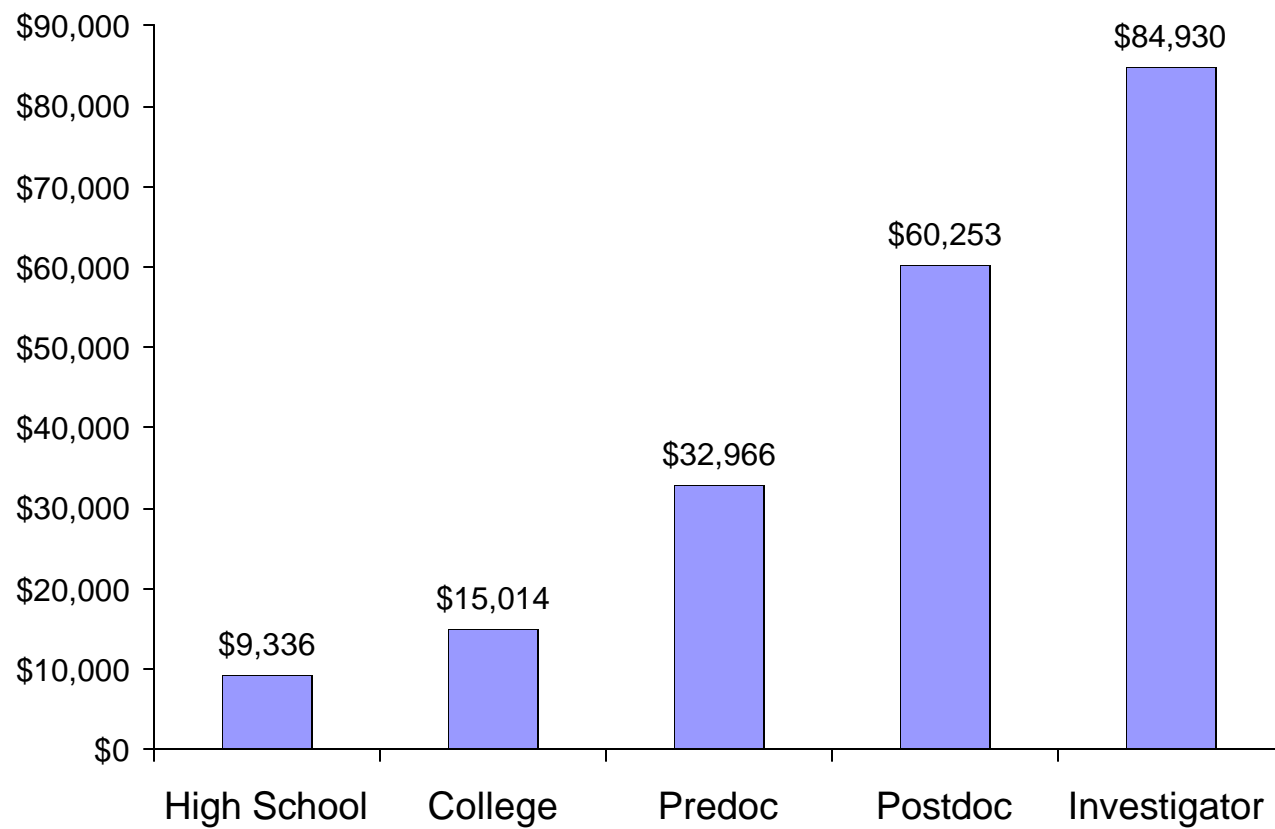
## CAREER LEVEL BY RACE/ETHNICITY OF INDIVIDUALS APPOINTED TO MINORITY SUPPLEMENTS

FISCAL YEAR 2000



**AVERAGE COST BY CAREER LEVEL  
FOR MINORITY SUPPLEMENT AWARDS**

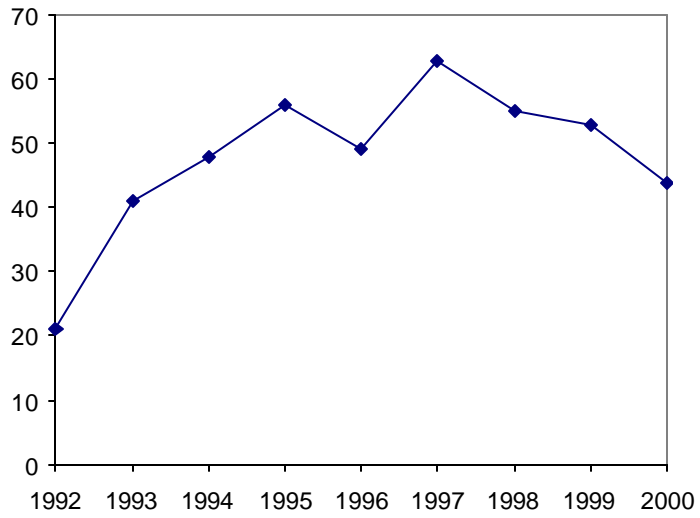
**FISCAL YEAR 2000**



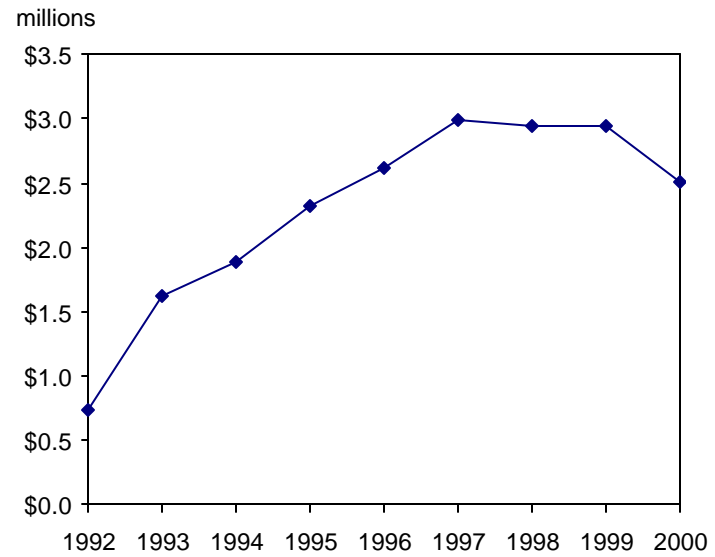
## TRENDS IN DISABILITY SUPPLEMENTS

FISCAL YEARS 1992-2000

### NUMBER



### AMOUNT



## DISABILITY SUPPLEMENTS AWARDED IN FISCAL YEAR 2000

	New Awards		Continuing Awards		Total Awards	
	Number	Amount	Number	Amount	Number	Amount
NINDS	5	\$421,507	1	\$30,462	6	\$451,969
NIDDK	2	\$84,300	3	\$237,846	5	\$322,146
NIGMS	5	\$279,402	1	\$37,830	6	\$317,232
NHLBI	4	\$211,962	1	\$69,799	5	\$281,761
NIDCD	1	\$5,820	4	\$209,605	5	\$215,425
NIMH	2	\$144,632	1	\$68,327	3	\$212,959
NIAID	2	\$64,042	4	\$145,651	6	\$209,693
NIA	1	\$82,695	1	\$119,645	2	\$202,340
NIDCR	0	\$0	3	\$174,386	3	\$174,386
NCRR	1	\$48,938	0	\$0	1	\$48,938
NIEHS	1	\$43,896	0	\$0	1	\$43,896
NEI	1	\$33,033	0	\$0	1	\$33,033
NCCAM	0	\$0	0	\$0	0	\$0
NCI	0	\$0	0	\$0	0	\$0
NHGRI	0	\$0	0	\$0	0	\$0
NIAAA	0	\$0	0	\$0	0	\$0
NIAMS	0	\$0	0	\$0	0	\$0
NICHD	0	\$0	0	\$0	0	\$0
NIDA	0	\$0	0	\$0	0	\$0
NINR	0	\$0	0	\$0	0	\$0
<b>Total</b>	<b>25</b>	<b>\$1,420,227</b>	<b>19</b>	<b>\$1,093,551</b>	<b>44</b>	<b>\$2,513,778</b>

**NEW APPLICATIONS FOR DISABILITY SUPPLEMENTS  
RECEIVED AND AWARDED**

**FISCAL YEAR 2000**

	<b>Applications Received</b>	<b>Supplements Awarded</b>	<b>Percent Awarded</b>
NIDCD	1	1	100%
NIA	1	1	100%
NCRR	1	1	100%
NIEHS	1	1	100%
NEI	1	1	100%
NIDDK	2	2	100%
NIMH	2	2	100%
NHLBI	4	4	100%
NINDS	5	5	100%
NIGMS	6	5	83%
NIAID	3	2	67%
NCCAM	0	0	—
NCI	0	0	—
NIDCR	0	0	—
NHGRI	0	0	—
NIAAA	0	0	—
NIAMS	0	0	—
NICHD	0	0	—
NIDA	0	0	—
NINR	0	0	—
<b>Total</b>	<b>27</b>	<b>25</b>	<b>93%</b>



**TYPES OF DISABILITIES BY CAREER LEVEL FOR  
INDIVIDUALS APPOINTED TO DISABILITY SUPPLEMENTS  
(ALL AWARDS, NEW AND CONTINUING)**

Fiscal year 2000

	High School	College	Predoc	Postdoc	Investigator	Total
Speech Impairment		1	1		2	4
Hearing Impairment			2	4	1	7
Vision Impairment			1	1	1	3
Missing Extremities			1			1
Orthopedic Impairment			2			2
Partial Paralysis			3	1		4
Complete Paralysis					2	2
Other Impairments		3	2	9	7	21
<b>Total</b>		<b>4</b>	<b>12</b>	<b>15</b>	<b>13</b>	<b>44</b>