

Table XXVII-1  
URINARY BLADDER CANCER (*Invasive and In Situ*)

TRENDS IN SEER INCIDENCE<sup>a</sup> AND U.S. MORTALITY<sup>b</sup> USING THE JOINPOINT REGRESSION PROGRAM, 1975-2002  
WITH UP TO THREE JOINPOINTS BY RACE AND SEX

		Joinpoint Segment 1		Joinpoint Segment 2		Joinpoint Segment 3		Joinpoint Segment 4	
		Year	APC	Year	APC	Year	APC	Year	APC
<u>SEER Cancer Incidence<sup>a</sup></u>									
All Races	Male and Female	1975-1987	0.8 <sup>c</sup>	1987-1996	-0.2	1996-2000	1.2	2000-2002	-2.5
All Races	Male	1975-1987	1.0 <sup>c</sup>	1987-1996	-0.5	1996-2000	1.5	2000-2002	-3.5
All Races	Female	1975-2002	0.2 <sup>c</sup>						
White	Male and Female	1975-1987	1.0 <sup>c</sup>	1987-1996	-0.1	1996-2000	1.4	2000-2002	-2.3
White	Male	1975-1987	1.2 <sup>c</sup>	1987-1995	-0.6	1995-2000	1.2	2000-2002	-3.4
White	Female	1975-2002	0.4 <sup>c</sup>						
Black	Male and Female	1975-2002	0.2						
Black	Male	1975-2002	0.1						
Black	Female	1975-2002	0.6						
<u>SEER Delay-Adjusted Incidence<sup>a</sup></u>									
All Races	Male and Female	1975-1987	0.8 <sup>c</sup>	1987-1996	-0.2	1996-1999	1.7	1999-2002	-0.8
All Races	Male	1975-1987	1.0 <sup>c</sup>	1987-1996	-0.5	1996-2000	1.6	2000-2002	-2.6
All Races	Female	1975-2002	0.2 <sup>c</sup>						
White	Male and Female	1975-1987	1.0 <sup>c</sup>	1987-1996	0.0	1996-2000	1.7	2000-2002	-1.2
White	Male	1975-1987	1.2 <sup>c</sup>	1987-1995	-0.5	1995-2000	1.5	2000-2002	-2.3
White	Female	1975-2002	0.5 <sup>c</sup>						
Black	Male and Female	1975-2002	0.3						
Black	Male	1975-2002	0.2						
Black	Female	1975-2002	0.7 <sup>c</sup>						
<u>U.S. Cancer Mortality<sup>b</sup></u>									
All Races	Male and Female	1975-1977	0.0	1977-1987	-2.1 <sup>c</sup>	1987-2002	-0.2 <sup>c</sup>		
All Races	Male	1975-1983	-1.4 <sup>c</sup>	1983-1987	-2.7 <sup>c</sup>	1987-1993	0.1	1993-2002	-0.6 <sup>c</sup>
All Races	Female	1975-1986	-1.7 <sup>c</sup>	1986-2002	-0.3 <sup>c</sup>				
White	Male and Female	1975-1977	0.1	1977-1987	-2.1 <sup>c</sup>	1987-2002	0.0		
White	Male	1975-1983	-1.4 <sup>c</sup>	1983-1987	-2.7 <sup>c</sup>	1987-1993	0.1	1993-2002	-0.5 <sup>c</sup>
White	Female	1975-1987	-1.7 <sup>c</sup>	1987-2002	-0.1				
Black	Male and Female	1975-2002	-1.1 <sup>c</sup>						
Black	Male	1975-2002	-1.1 <sup>c</sup>						
Black	Female	1975-2002	-0.8 <sup>c</sup>						

Joinpoint Regression Program Version 3.0, April 2005, National Cancer Institute. (<http://srab.cancer.gov/joinpoint/>).

The APC is the Annual Percent Change based on rates age-adjusted to the 2000 US Std Population (19 age groups - Census P25-1130).

<sup>a</sup> Trends are from the SEER 9 areas.

<sup>b</sup> Trends are from the NCHS public use data file for the total US.

<sup>c</sup> The APC is significantly different from zero (p<.05).

Table XXVII-2  
URINARY BLADDER CANCER (Invasive and *In Situ*)

SEER INCIDENCE RATES, AGE-ADJUSTED AND AGE-SPECIFIC RATES<sup>a</sup>, BY RACE AND SEX

	All Races			Whites			Blacks		
	Total	Males	Females	Total	Males	Females	Total	Males	Females
<u>AGE-ADJUSTED RATES</u>									
YEAR OF DIAGNOSIS:									
1975	19.3	34.3	8.9	20.2	36.3	9.2	10.6	16.3	6.3
1976	19.7	34.4	9.5	20.7	36.7	9.7	12.5	18.2	8.6
1977	19.0	33.4	8.9	20.0	35.6	9.2	13.5	22.8	7.1
1978	20.0	35.4	9.4	21.1	37.9	9.7	11.7	19.4	6.4
1979	20.0	35.3	9.4	21.3	38.1	9.8	10.3	15.6	6.5
1980	20.4	37.2	8.9	21.5	39.9	9.1	13.3	18.2	10.0
1981	20.7	36.3	9.7	21.9	38.7	10.3	11.5	20.6	5.5
1982	20.1	35.8	9.5	21.4	38.3	10.1	12.2	21.9	5.5
1983	20.0	36.0	9.0	21.3	38.6	9.4	12.2	18.7	7.6
1984	20.8	37.7	9.2	22.3	40.9	9.6	11.4	18.6	6.2
1985	20.7	36.4	9.9	22.1	39.3	10.3	13.0	20.3	8.0
1986	21.0	37.9	9.4	22.4	40.8	9.9	12.9	22.1	6.6
1987	21.7	39.5	9.2	23.2	42.8	9.6	13.2	21.8	7.4
1988	20.9	38.1	9.0	22.7	41.8	9.7	11.3	18.0	6.4
1989	21.0	37.4	9.7	22.8	40.9	10.2	11.3	17.3	7.2
1990	21.1	37.5	9.6	22.6	40.7	10.0	12.7	18.6	8.7
1991	20.9	37.6	9.3	22.7	41.1	9.9	12.9	19.7	8.5
1992	21.2	37.5	9.8	22.9	40.7	10.5	12.4	20.7	6.9
1993	21.2	37.6	9.7	22.8	40.4	10.3	14.2	24.4	7.9
1994	20.8	36.8	9.4	22.6	40.2	10.2	12.3	20.0	6.9
1995	20.6	36.1	9.6	22.4	39.4	10.3	11.8	18.0	7.4
1996	20.7	36.5	9.5	22.6	39.8	10.3	12.2	19.7	7.3
1997	21.0	37.0	9.5	22.8	40.5	10.2	12.3	19.7	7.8
1998	21.5	38.3	9.4	23.5	41.9	10.1	11.7	19.9	6.4
1999	21.6	37.9	10.0	23.5	41.2	10.6	14.6	23.0	9.3
2000	21.6	38.4	9.4	23.6	42.0	10.2	13.0	19.8	8.7
2001	21.3	37.6	9.5	23.5	41.4	10.5	11.4	18.0	7.1
2002	20.7	35.9	9.6	22.7	39.1	10.5	12.2	17.3	8.7
<u>AGE-ADJUSTED RATES, 1998-2002</u>									
AGE AT DIAGNOSIS:									
All ages	21.3	37.6	9.6	23.4	41.1	10.4	12.6	19.6	8.0
Under 65	6.6	10.3	3.1	7.3	11.3	3.5	3.8	5.9	2.1
65 and over	123.5	226.7	54.5	134.0	247.2	57.9	73.1	113.8	49.3
All ages(IARC world std) <sup>b</sup>	12.9	21.8	5.8	14.2	24.0	6.4	7.4	11.4	4.5
<u>AGE-SPECIFIC RATES, 1998-2002</u>									
AGE AT DIAGNOSIS:									
<1	-	-	-	-	-	-	-	-	-
1-4	-	-	-	-	-	-	-	-	-
5-9	-	-	-	-	-	-	-	-	-
10-14	-	-	-	-	-	-	-	-	-
15-19	-	-	-	-	-	-	-	-	-
20-24	0.3	-	-	0.4	-	-	-	-	-
25-29	0.5	0.6	-	0.7	0.7	-	-	-	-
30-34	0.9	1.1	0.6	1.0	1.3	0.7	-	-	-
35-39	1.9	2.8	1.1	2.1	3.0	1.2	-	-	-
40-44	3.9	5.9	2.0	4.4	6.5	2.2	-	-	-
45-49	8.2	12.7	3.7	9.1	14.0	4.2	5.5	9.3	-
50-54	15.9	24.6	7.6	17.6	26.8	8.6	9.9	15.5	-
55-59	31.1	48.8	14.1	34.6	53.9	15.8	18.5	28.0	10.4
60-64	52.9	84.3	23.9	59.3	93.6	26.9	29.0	44.2	16.8
65-69	80.7	132.3	36.5	90.6	147.6	40.4	43.6	66.7	26.4
70-74	115.0	200.2	47.7	126.5	219.3	51.6	58.8	92.5	35.8
75-79	145.4	266.5	60.0	157.7	291.6	63.1	83.7	125.2	57.9
80-84	164.6	312.8	74.2	175.7	336.6	78.0	100.9	165.2	66.9
85+	149.8	321.4	76.2	155.6	344.5	77.0	117.2	182.7	92.1

<sup>a</sup> SEER 9 areas. Rates are per 100,000 and are age-adjusted to the 2000 US Std Population (19 age groups - Census P25-1130), unless noted.

<sup>b</sup> SEER 9 areas. Rates are per 100,000 and are age-adjusted to the IARC world standard population.

- Statistic not shown. Rate based on less than 25 cases for the time interval.

Table XXVII-3  
URINARY BLADDER CANCER (Invasive)

U.S. DEATH RATES, AGE-ADJUSTED AND AGE-SPECIFIC RATES<sup>a</sup>, BY RACE AND SEX

	All Races			Whites			Blacks		
	Total	Males	Females	Total	Males	Females	Total	Males	Females
<u>AGE-ADJUSTED RATES</u>									
YEAR OF DEATH:									
1975	5.5	9.8	2.8	5.6	10.1	2.7	5.0	6.9	3.6
1976	5.6	9.8	2.9	5.6	10.0	2.8	5.3	7.8	3.5
1977	5.5	9.7	2.9	5.6	9.9	2.8	5.2	7.6	3.6
1978	5.4	9.5	2.9	5.5	9.8	2.8	4.9	7.2	3.4
1979	5.2	9.3	2.7	5.3	9.6	2.7	5.0	7.6	3.3
1980	5.2	9.2	2.7	5.2	9.5	2.7	4.7	6.2	3.7
1981	5.1	9.0	2.7	5.1	9.3	2.6	4.9	7.2	3.4
1982	5.0	8.9	2.6	5.0	9.2	2.5	4.9	6.8	3.6
1983	4.9	8.8	2.5	4.9	9.0	2.5	4.7	7.2	3.2
1984	4.7	8.5	2.5	4.8	8.7	2.4	4.7	6.9	3.4
1985	4.7	8.4	2.4	4.7	8.7	2.4	4.5	6.9	3.0
1986	4.5	8.1	2.4	4.6	8.4	2.3	4.2	5.8	3.3
1987	4.4	7.9	2.3	4.5	8.1	2.3	4.4	6.5	3.1
1988	4.4	7.8	2.4	4.5	8.0	2.3	4.3	5.9	3.3
1989	4.5	8.0	2.4	4.5	8.2	2.3	4.6	7.0	3.2
1990	4.5	8.0	2.4	4.6	8.2	2.4	4.4	6.4	3.2
1991	4.4	7.9	2.3	4.5	8.1	2.3	4.4	6.6	3.1
1992	4.5	7.9	2.4	4.5	8.1	2.4	4.3	6.7	3.1
1993	4.5	8.1	2.3	4.5	8.3	2.3	4.2	6.4	2.9
1994	4.5	7.9	2.4	4.5	8.1	2.4	4.3	6.4	3.2
1995	4.4	7.8	2.3	4.4	8.1	2.2	4.0	5.8	3.1
1996	4.4	7.8	2.4	4.5	8.1	2.3	4.2	5.9	3.1
1997	4.4	7.6	2.4	4.5	7.9	2.4	4.0	5.9	3.0
1998	4.4	7.7	2.3	4.5	8.0	2.3	3.9	5.6	3.0
1999	4.4	7.7	2.3	4.5	7.9	2.2	4.0	5.8	3.0
2000	4.3	7.6	2.3	4.5	7.9	2.3	3.7	5.7	2.7
2001	4.3	7.5	2.3	4.5	7.9	2.2	3.7	5.1	2.9
2002	4.4	7.5	2.4	4.5	7.8	2.3	3.9	5.5	3.0
<u>AGE-ADJUSTED RATES, 1998-2002</u>									
AGE AT DEATH:									
All ages	4.4	7.6	2.3	4.5	7.9	2.3	3.9	5.5	2.9
Under 65	0.7	1.1	0.4	0.8	1.2	0.4	0.7	1.0	0.5
65 and over	29.3	52.2	15.5	30.1	54.5	15.4	25.4	36.9	19.4
All ages(IARC world std) <sup>b</sup>	2.2	3.7	1.1	2.3	3.9	1.1	2.0	2.8	1.5
<u>AGE-SPECIFIC RATES, 1998-2002</u>									
AGE AT DEATH:									
<1	-	-	-	-	-	-	-	-	-
1-4	-	-	-	-	-	-	-	-	-
5-9	-	-	-	-	-	-	-	-	-
10-14	-	-	-	-	-	-	-	-	-
15-19	-	-	-	-	-	-	-	-	-
20-24	-	-	-	-	-	-	-	-	-
25-29	-	-	-	-	-	-	-	-	-
30-34	0.0	0.0	-	0.0	-	-	-	-	-
35-39	0.1	0.2	0.1	0.2	0.2	0.1	-	-	-
40-44	0.4	0.5	0.3	0.4	0.5	0.3	0.4	0.6	-
45-49	0.8	1.2	0.4	0.8	1.2	0.4	0.9	1.2	0.6
50-54	1.7	2.6	0.9	1.8	2.7	0.9	1.8	2.6	1.1
55-59	3.6	5.6	1.8	3.7	5.9	1.7	3.8	4.9	2.8
60-64	6.8	10.7	3.3	7.1	11.3	3.2	6.3	8.3	4.7
65-69	11.8	19.0	5.6	12.3	20.1	5.5	10.1	12.9	8.1
70-74	19.8	32.4	9.9	20.5	33.9	9.8	17.5	23.1	13.8
75-79	30.1	51.9	14.9	30.9	53.9	14.7	26.8	39.5	19.2
80-84	44.5	79.8	23.6	45.6	82.4	23.6	38.9	60.9	27.7
85+	68.4	135.1	40.8	70.1	141.2	40.7	57.4	86.0	46.6

<sup>a</sup> NCHS public use data file for the total US. Rates are per 100,000 and are age-adjusted to the 2000 US Std Population (19 age groups - Census P25-1130), unless noted.

<sup>b</sup> NCHS public use data file for the total US. Rates are per 100,000 and are age-adjusted to the IARC world standard population.

- Statistic not shown. Rate based on less than 25 cases for the time interval.

Table XXVII-4  
URINARY BLADDER CANCER (Invasive and *In Situ*)

## SURVIVAL RATES, BY RACE, SEX, DIAGNOSIS YEAR, STAGE AND AGE

	All Races			Whites			Blacks		
	Total	Males	Females	Total	Males	Females	Total	Males	Females
<b>5-YR RELATIVE SURVIVAL RATES</b>									
YEAR OF DIAGNOSIS:									
1960-1963 <sup>a</sup>	-	-	-	53	53	53	24	24	24
1970-1973 <sup>a</sup>	-	-	-	61	61	60	36	38	27
1974-1976 <sup>b</sup>	72.6	73.8	69.5	73.8	74.6	71.6	47.9	54.3	37.2 <sup>e</sup>
1977-1979 <sup>b</sup>	75.1	76.8	70.6	76.0	77.2	72.8	54.6	63.0	38.3 <sup>e</sup>
1980-1982 <sup>b</sup>	77.9	79.1	74.7	78.8	79.8	76.0	58.5	63.2	48.0 <sup>e</sup>
1983-1985 <sup>b</sup>	77.6	79.2	73.2	78.2	79.4	74.6	59.7	64.8	49.9 <sup>e</sup>
1986-1988 <sup>b</sup>	79.9	81.6	75.1	80.8	82.3	76.3	62.8	67.6	51.5 <sup>e</sup>
1989-1991 <sup>b</sup>	81.1	83.6	74.0	82.2	84.5	75.6	61.5	65.0	56.2
1992-1994 <sup>b</sup>	81.7	84.0	75.1	82.4	84.6	76.3	64.0	68.8	54.7
1995-2001 <sup>b</sup>	81.8 <sup>d</sup>	83.5 <sup>d</sup>	77.3 <sup>d</sup>	82.8 <sup>d</sup>	84.3 <sup>d</sup>	78.6 <sup>d</sup>	64.3 <sup>d</sup>	69.7 <sup>d</sup>	53.9 <sup>d</sup>
1995-2001 <sup>b</sup>									
All Stages	81.8	83.5	77.3	82.8	84.3	78.6	64.3	69.7	53.9
Localized	94.2	94.9	92.1	94.6	95.3	92.6	84.5	87.9	75.6 <sup>e</sup>
Regional	48.4	50.3	43.6	49.0	50.7	44.2	41.0	46.1 <sup>e</sup>	33.9 <sup>e</sup>
Distant	6.2	6.8	4.4	5.7	5.9	5.0	5.1	5.1	0.0
Unstaged	61.1	64.2	52.9	62.1	64.9	53.2	41.7 <sup>e</sup>	44.3 <sup>e</sup>	33.2 <sup>f</sup>
<b>5-YR PERIOD SURVIVAL RATES<sup>bc</sup></b>									
YEAR OF DIAGNOSIS:									
1995-2001	81.9	83.5	77.6	83.1	84.4	79.2	63.1	68.2	53.5
<b>STAGE DISTRIBUTION (%) 1995-2001<sup>b</sup></b>									
All Stages									
Number of cases	28,056	20,837	7,219	25,723	19,241	6,482	1,211	761	450
Percent	100%	100%	100%	100%	100%	100%	100%	100%	100%
Localized	75	76	71	76	77	73	58	61	53
Regional	19	18	21	18	18	20	29	26	35
Distant	3	3	5	3	3	4	6	6	6
Unstaged	3	3	4	3	3	4	7	7	6
<b>5-YR RELATIVE SURVIVAL RATES, 1995-2001<sup>b</sup></b>									
AGE AT DIAGNOSIS:									
<45	90.6	91.6	87.8	91.9	92.4	90.2	78.8 <sup>e</sup>	84.9 <sup>e</sup>	-
45-54	87.0	87.9	84.4	88.0	88.7	85.9	74.2	76.2 <sup>e</sup>	66.8 <sup>e</sup>
55-64	85.2	86.3	81.2	86.2	87.2	82.8	67.5	73.6	52.3 <sup>e</sup>
65-74	82.0	83.1	78.6	82.8	83.7	79.9	61.2	68.8 <sup>e</sup>	46.9 <sup>e</sup>
75+	75.1	77.5	70.2	76.3	78.6	71.2	54.1	52.8 <sup>e</sup>	54.9 <sup>e</sup>
Under 65	86.4	87.5	83.1	87.5	88.3	84.8	71.8	76.5	58.0 <sup>e</sup>
65 and over	79.1	81.0	74.4	80.1	81.8	75.5	58.3	62.5	51.8

<sup>a</sup> Rates are based on End Results data from a series of hospital registries and one population-based registry.

<sup>b</sup> Rates are from the SEER 9 areas (San Francisco, Connecticut, Detroit, Hawaii, Iowa, New Mexico, Seattle, Utah, Atlanta). Rates are based on follow-up of patients into 2002.

<sup>c</sup> Period survival provides a more up-to-date estimate of survival by piecing together the most recent conditional survival estimates from several cohorts. It is computed here using three calendar year blocks (1999-2001: 0-1 year survival), (1998-2000: 1-2 year survival), (1997-1999: 2-3 year survival), (1996-1998: 3-4 year survival), (1995-1997: 4-5 years survival).

<sup>d</sup> The difference in rates between 1974-1976 and 1995-2001 is statistically significant ( $p < .05$ ).

<sup>e</sup> The standard error of the survival rate is between 5 and 10 percentage points.

<sup>f</sup> The standard error of the survival rate is greater than 10 percentage points.

- Statistic could not be calculated.

Table XXVII-5  
URINARY BLADDER CANCER

SURVIVAL RATES (Invasive and *In Situ*)<sup>a</sup>

By Year of Diagnosis

All Races, Males and Females

Year of Diagnosis

	1975- 1979	1980- 1984	1985	1986	1987	1988	1989	1990	1991	1992	1993	1994	1995	1996	1997	1998	1999	2000	2001
Relative Survival Rates (SEER <sup>b</sup> )																			
1-year	87.4	89.4	89.1	90.3	90.3	91.0	91.4	90.1	90.1	90.4	91.0	91.2	91.2	90.4	91.9	91.6	90.8	91.8	91.7
2-year	81.2	84.4	84.3	85.7	85.8	85.9	86.8	86.2	85.6	85.5	86.5	86.7	87.5	86.5	87.1	87.3	86.1	87.6	
3-year	78.3	81.6	81.1	82.7	83.2	84.0	84.1	83.4	83.5	83.0	84.3	85.2	85.3	84.9	84.3	84.7	83.9		
4-year	75.9	79.4	78.4	80.7	81.5	82.2	82.5	82.0	82.3	82.5	83.1	83.3	83.4	83.1	82.4	83.3			
5-year	74.3	77.9	77.2	79.1	80.4	80.4	81.0	81.2	80.9	80.8	81.9	82.3	83.1	82.1	80.7				
6-year	72.9	76.4	76.3	78.4	78.6	78.8	80.0	80.1	80.1	79.7	80.7	81.1	81.8	81.4					
7-year	71.3	75.2	75.2	77.6	77.6	77.6	78.6	79.3	78.1	78.2	79.5	79.8	80.4						
8-year	70.3	74.3	74.4	76.6	76.2	77.0	77.0	77.9	77.0	77.4	79.2	79.6							
9-year	69.1	73.0	74.0	75.9	74.7	76.5	76.7	76.2	76.4	77.1	78.3								
10-year	67.6	72.2	72.9	75.1	73.8	76.2	75.7	74.7	75.7	76.5									
11-year	66.2	71.4	72.9	73.7	73.8	75.2	74.9	73.7	75.4										
12-year	65.4	70.7	71.0	72.7	73.1	75.0	73.9	72.7											
13-year	64.9	70.2	70.5	71.9	73.0	73.2	73.9												
14-year	64.0	69.3	69.1	70.5	72.2	71.9													
15-year	63.5	68.5	68.3	70.3	71.6														
16-year	62.9	67.6	67.5	69.0															
17-year	62.5	67.2	66.8																
18-year	62.4	66.9																	
19-year	62.4																		
20-year	62.4																		

<sup>a</sup> Survival rates are relative rates expressed as percents.  
<sup>b</sup> Rates are from the SEER 9 areas.

Table XXVII-6  
URINARY BLADDER CANCER

SURVIVAL RATES (Invasive and *In Situ*)<sup>a</sup>

By Year of Diagnosis

All Races, Males

Year of Diagnosis

	1975- 1979	1980- 1984	1985	1986	1987	1988	1989	1990	1991	1992	1993	1994	1995	1996	1997	1998	1999	2000	2001
Relative Survival Rates (SEER <sup>b</sup> )																			
1-year	89.4	90.7	91.1	91.7	92.1	92.2	93.3	92.1	91.6	92.0	92.6	93.0	92.7	92.0	93.5	93.4	92.6	93.1	92.4
2-year	83.2	86.0	86.0	87.0	87.9	87.0	89.3	88.4	87.7	87.7	88.9	88.5	89.2	88.2	89.2	89.2	88.0	89.3	
3-year	80.1	83.2	83.0	83.7	84.9	85.4	86.9	85.8	85.9	85.8	86.8	87.1	87.2	86.5	86.5	86.4	86.0		
4-year	77.6	80.9	79.9	81.6	83.4	83.9	85.2	84.4	84.8	85.3	85.3	85.2	85.2	84.6	84.5	84.9			
5-year	75.6	79.3	78.6	79.9	82.5	82.1	83.8	83.6	83.0	83.6	84.0	84.3	84.9	83.6	82.7				
6-year	74.2	77.8	77.7	79.2	80.9	80.7	82.2	82.5	82.1	83.0	83.4	83.0	84.1	82.9					
7-year	72.4	76.7	76.5	78.0	79.7	79.6	80.4	81.4	79.6	81.4	82.1	81.6	82.8						
8-year	71.1	75.8	75.5	77.2	78.0	78.9	78.6	80.0	78.4	80.3	82.0	81.4							
9-year	69.8	74.5	75.1	76.1	76.4	78.6	78.4	78.0	77.6	79.7	82.0								
10-year	68.2	73.6	74.1	75.6	75.8	78.6	77.3	77.1	76.7	79.1									
11-year	66.5	72.9	74.0	74.6	75.8	77.5	76.9	76.0	76.5										
12-year	65.7	72.1	71.7	73.9	74.7	77.5	75.5	75.0											
13-year	65.0	71.7	71.6	73.0	74.6	76.2	74.9												
14-year	64.2	70.7	70.2	72.0	74.6	75.1													
15-year	63.8	69.9	69.6	72.0	74.6														
16-year	62.8	68.7	68.6	70.1															
17-year	62.5	68.5	67.9																
18-year	62.3	68.3																	
19-year	62.3																		
20-year	62.3																		

<sup>a</sup> Survival rates are relative rates expressed as percents.  
<sup>b</sup> Rates are from the SEER 9 areas.

Table XXVII-7  
URINARY BLADDER CANCER

SURVIVAL RATES (Invasive and *In Situ*)<sup>a</sup>

By Year of Diagnosis

All Races, Females

Year of Diagnosis

	1975- 1979	1980- 1984	1985	1986	1987	1988	1989	1990	1991	1992	1993	1994	1995	1996	1997	1998	1999	2000	2001
Relative Survival Rates (SEER <sup>b</sup> )																			
1-year	81.7	85.8	84.0	86.4	84.8	87.1	85.9	84.2	85.7	85.8	86.2	85.9	86.9	85.9	87.1	86.3	86.0	87.7	89.5
2-year	75.7	79.8	79.6	81.6	79.3	82.5	79.9	79.7	79.4	79.2	79.7	81.6	82.8	81.8	81.2	81.7	80.9	82.6	
3-year	73.3	77.0	76.0	79.6	77.7	79.4	76.3	76.2	76.4	75.4	77.4	79.9	80.0	80.2	78.0	80.0	78.1		
4-year	71.3	75.1	74.1	78.2	75.4	77.1	74.9	75.1	75.0	74.5	77.0	77.9	78.6	79.0	76.4	78.6			
5-year	70.6	74.1	72.9	76.2	73.8	75.3	73.3	73.9	74.8	72.7	75.8	76.6	77.2	78.1	75.5				
6-year	69.5	72.6	72.4	75.5	71.7	73.0	73.3	73.3	74.6	70.7	73.4	75.9	75.8	76.9					
7-year	68.2	71.1	71.6	75.5	71.0	71.6	73.1	73.3	73.7	69.6	72.7	74.9	74.1						
8-year	68.0	70.4	71.2	74.9	70.5	70.8	72.4	72.1	73.0	69.3	71.0	74.4							
9-year	67.3	69.1	70.4	74.9	69.4	70.0	72.0	71.3	72.9	69.3	68.4								
10-year	66.1	68.1	69.7	73.6	67.7	69.1	71.2	68.0	72.8	69.3									
11-year	65.4	67.3	69.5	71.2	67.3	68.8	69.5	66.9	71.9										
12-year	64.8	66.9	69.0	69.6	67.3	66.3	69.0	65.0											
13-year	64.7	66.1	67.8	69.2	66.5	65.1	69.0												
14-year	63.5	65.8	66.3	66.6	64.9	63.2													
15-year	62.7	65.1	64.7	66.2	63.0														
16-year	62.7	64.7	64.0	66.2															
17-year	62.5	63.9	63.3																
18-year	62.5	63.2																	
19-year	62.5																		
20-year	62.3																		

<sup>a</sup> Survival rates are relative rates expressed as percents.  
<sup>b</sup> Rates are from the SEER 9 areas.

Table XXVII-8

## URINARY BLADDER CANCER (Invasive and In Situ)

Percent Diagnosed With Cancer In 10, 20 and 30 Years and In Remaining Lifetime,  
Given Cancer Free At Current Age By Race and Sex

Lifetime Risk (Percent) of Being Diagnosed (13 SEER Areas) With Cancer and  
Lifetime Risk (Percent) of Dying (Total U.S.) From Cancer

2000-2002

## All Races

Current Age	Males				Females			
	+10 yrs	+20 yrs	+30 yrs	Eventually	+10 yrs	+20 yrs	+30 yrs	Eventually
0	0.00	0.00	0.00	3.58	0.00	0.00	0.00	1.14
10	0.00	0.00	0.02	3.63	0.00	0.00	0.01	1.15
20	0.00	0.02	0.11	3.65	0.00	0.01	0.04	1.15
30	0.02	0.10	0.41	3.69	0.01	0.04	0.13	1.16
40	0.09	0.40	1.23	3.73	0.03	0.12	0.36	1.16
50	0.33	1.19	2.55	3.78	0.10	0.33	0.70	1.15
60	0.93	2.40	3.48	3.72	0.25	0.64	1.01	1.10

Lifetime Risk of Being Diagnosed = 3.58%  
Lifetime Risk of Dying = 0.75%

Lifetime Risk of Being Diagnosed = 1.14%  
Lifetime Risk of Dying = 0.32%

## Whites

Current Age	Males				Females			
	+10 yrs	+20 yrs	+30 yrs	Eventually	+10 yrs	+20 yrs	+30 yrs	Eventually
0	0.00	0.00	0.01	3.99	0.00	0.00	0.00	1.24
10	0.00	0.01	0.02	4.03	0.00	0.00	0.01	1.25
20	0.00	0.02	0.12	4.06	0.00	0.01	0.04	1.25
30	0.02	0.11	0.46	4.09	0.01	0.04	0.15	1.26
40	0.09	0.45	1.39	4.14	0.03	0.14	0.40	1.26
50	0.36	1.34	2.86	4.18	0.11	0.38	0.78	1.24
60	1.05	2.68	3.84	4.10	0.28	0.70	1.09	1.18

Lifetime Risk of Being Diagnosed = 3.99%  
Lifetime Risk of Dying = 0.80%

Lifetime Risk of Being Diagnosed = 1.24%  
Lifetime Risk of Dying = 0.32%

## Blacks

Current Age	Males				Females			
	+10 yrs	+20 yrs	+30 yrs	Eventually	+10 yrs	+20 yrs	+30 yrs	Eventually
0	0.00	0.00	0.00	1.39	0.00	0.00	0.00	0.80
10	0.00	0.00	0.02	1.43	0.00	0.00	0.01	0.82
20	0.00	0.02	0.07	1.44	0.00	0.00	0.02	0.82
30	0.02	0.07	0.27	1.48	0.00	0.02	0.09	0.83
40	0.06	0.26	0.62	1.51	0.02	0.09	0.26	0.84
50	0.22	0.60	1.14	1.56	0.07	0.25	0.53	0.85
60	0.45	1.07	1.45	1.56	0.19	0.50	0.77	0.85

Lifetime Risk of Being Diagnosed = 1.39%  
Lifetime Risk of Dying = 0.39%

Lifetime Risk of Being Diagnosed = 0.80%  
Lifetime Risk of Dying = 0.33%

Devcan Version 6.0, April 2005, National Cancer Institute (<http://srab.cancer.gov/devcan/>).

Source: Incidence data are from the SEER 13 areas (San Francisco, Connecticut, Detroit, Hawaii, Iowa, New Mexico, Seattle, Utah, Atlanta, San Jose-Monterey, Los Angeles, Alaska Native Registry, Rural Georgia). Mortality data are from the NCHS public use data file for the total US.



Table XXVII-9  
URINARY BLADDER CANCER

SEER INCIDENCE (Invasive and *In Situ*) AND U.S. MORTALITY  
AGE-ADJUSTED RATES AND TRENDS<sup>a</sup>  
By Race/Ethnicity and Sex

Incidence<sup>b</sup>

RACE/ETHNICITY	Rate 1998-2002			Trend 1992-2002		
	Rate per 100,000 persons			APC (%)		
	Total	Males	Females	Total	Males	Females
All Races	20.3	36.0	9.1	-0.2	-0.2	-0.4 <sup>e</sup>
White	22.5	39.7	9.9	0.0	-0.1	-0.2
White Hispanic <sup>c</sup>	11.1	19.5	5.3	-0.3	-0.4	0.3
White Non-Hispanic <sup>c</sup>	23.3	41.1	10.3	0.2	-0.1	0.1
Black	12.6	20.1	7.7	0.2	-0.2	0.9
Asian/Pacific Islander	9.8	17.2	4.1	0.1	1.1	-1.3
Amer Ind/Alaska Nat	5.1	8.8	-	-	-	-
Hispanic <sup>c</sup>	10.7	18.9	5.2	-0.1	-0.2	0.3

Mortality<sup>d</sup>

RACE/ETHNICITY	Rate 1998-2002			Trend 1992-2002		
	Rate per 100,000 persons			APC (%)		
	Total	Males	Females	Total	Males	Females
All Races	4.4	7.6	2.3	-0.3 <sup>e</sup>	-0.6 <sup>e</sup>	-0.4
White	4.5	7.9	2.3	-0.1	-0.5 <sup>e</sup>	-0.3
White Hispanic <sup>c</sup>	2.5	4.2	1.3	0.1	-0.6	1.6
White Non-Hispanic <sup>c</sup>	4.5	8.0	2.3	0.0	-0.4 <sup>e</sup>	0.0
Black	3.9	5.5	2.9	-1.3 <sup>e</sup>	-2.0 <sup>e</sup>	-0.6
Asian/Pacific Islander	1.8	3.0	1.0	-0.6	0.6	-2.2
Amer Ind/Alaska Nat	1.7	2.6	1.0	1.7	-	-
Hispanic <sup>c</sup>	2.4	4.1	1.3	0.1	-0.7	1.6

- The APC is the Annual Percent Change over the time interval.
- Statistic not shown. Rate based on less than 25 cases for the time interval. Trend based on less than 10 cases for at least one year within the time interval.
- <sup>a</sup> Rates are age-adjusted to the 2000 US Std Population (19 age groups - Census P25-1130). Trends are based on rates age-adjusted to the 2000 US Std Population (19 age groups - Census P25-1130).
- <sup>b</sup> Incidence data are from the 13 SEER areas (San Francisco, Connecticut, Detroit, Hawaii, Iowa, New Mexico, Seattle, Utah, Atlanta, San Jose-Monterey, Los Angeles, Alaska Native Registry and Rural Georgia).
- <sup>c</sup> Hispanic and Non-Hispanic are not mutually exclusive from Whites, Blacks, Asian Pacific Islanders, and American Indians/Alaska Natives. Incidence data for Hispanics and Non-Hispanics do not include cases from Detroit, Hawaii, Alaska Native Registry and Rural Georgia. For mortality, information is included for all states except Connecticut, Maine, Maryland, Minnesota, New Hampshire, New York, North Dakota, Oklahoma and Vermont.
- <sup>d</sup> Mortality data are analyzed from a public use file provided by the National Center for Health Statistics (NCHS).
- <sup>e</sup> The APC is significantly different from zero (p<.05).

Table XXVII-10  
URINARY BLADDER CANCERAGE-ADJUSTED SEER INCIDENCE (Invasive and In Situ) RATES AND SEER DEATH RATES<sup>a</sup>  
By Registry, Race and Sex

	All Races			Whites			Blacks		
	Total	Males	Females	Total	Males	Females	Total	Males	Females
<u>SEER INCIDENCE RATES<sup>b</sup>, 1998-2002</u>									
REGISTRY									
13 SEER Areas	20.3	36.0	9.1	22.5	39.7	9.9	12.6	20.1	7.7
11 SEER Areas	20.4	36.1	9.1	22.5	39.8	9.9	12.7	20.2	7.8
9 SEER Areas	21.3	37.6	9.6	23.4	41.1	10.4	12.6	19.6	8.0
San Francisco-Oakland	18.3	31.4	8.8	21.4	36.3	10.2	11.4	17.7	7.2
Connecticut	26.1	45.8	12.3	27.0	47.2	12.8	11.3	18.6	6.8
Metropolitan Detroit	24.8	44.5	11.2	27.9	50.5	12.0	13.6	21.2	8.7
Hawaii	13.2	22.9	5.3	21.3	36.3	7.7	-	-	-
Iowa	21.7	38.8	9.4	21.6	38.5	9.3	-	-	-
New Mexico	16.8	28.8	7.4	17.8	30.4	7.9	-	-	-
Seattle-Puget Sound	24.6	43.7	10.4	25.8	45.6	10.9	14.2	21.1	-
Utah	17.8	31.5	7.3	18.1	32.0	7.4	-	-	-
Metropolitan Atlanta	17.4	31.2	8.5	19.5	35.3	8.8	12.1	18.7	8.4
San Jose-Monterey	18.0	31.6	8.2	20.2	35.3	9.4	16.5	35.9	-
Los Angeles	17.9	32.2	7.7	20.0	36.1	8.4	12.7	21.2	7.4
<u>SEER DEATH RATES<sup>c</sup>, 1998-2002</u>									
REGISTRY									
13 SEER Areas	4.0	6.8	2.1	4.2	7.4	2.1	4.0	5.8	2.9
11 SEER Areas	4.0	6.8	2.1	4.2	7.4	2.1	4.0	5.9	3.0
9 SEER Areas	4.1	7.0	2.1	4.3	7.4	2.2	4.1	6.0	3.1
San Francisco-Oakland	3.9	6.3	2.3	4.3	7.0	2.5	4.6	5.9	3.7
Connecticut	4.6	8.2	2.3	4.7	8.4	2.4	3.4	-	-
Metropolitan Detroit	4.3	7.7	2.1	4.4	8.3	2.0	4.0	5.5	3.0
Hawaii	2.8	4.2	1.7	4.6	7.1	-	-	-	-
Iowa	3.8	6.8	2.0	3.9	6.9	2.0	-	-	-
New Mexico	3.8	6.2	2.1	4.0	6.4	2.2	-	-	-
Seattle-Puget Sound	4.3	7.6	2.0	4.4	7.8	2.1	-	-	-
Utah	3.4	6.0	1.6	3.5	6.1	1.7	-	-	-
Metropolitan Atlanta	4.3	7.4	2.7	4.3	7.4	2.4	4.7	7.9	3.5
San Jose-Monterey	3.4	6.1	1.6	3.8	6.6	1.9	-	-	-
Los Angeles	3.8	6.5	2.0	4.1	7.2	2.1	3.8	5.6	2.7

<sup>a</sup> Incidence and death rates are per 100,000 and are age-adjusted to the 2000 US Std Population (19 age groups - Census P25-1130).

<sup>b</sup> The SEER 9 areas are San Francisco, Connecticut, Detroit, Hawaii, Iowa, New Mexico, Seattle, Utah, and Atlanta. The SEER 11 areas comprise the SEER 9 areas plus San Jose-Monterey and Los Angeles. The SEER 13 areas comprise the SEER 11 areas plus the Alaska Native Registry and Rural Georgia.

<sup>c</sup> NCHS public use data file for the total US with analyses limited to the SEER geographic areas.

- Statistic could not be calculated or populations are inadequate.

Table XXVII-11  
 URINARY BLADDER CANCER (Invasive)

AVERAGE ANNUAL AGE-ADJUSTED CANCER DEATH<sup>a</sup> RATES BY STATE, ALL RACES, 1998-2002

Males and Females

State	Rate	SE	Rank	PD
TOTAL U.S.	4.4	0.02		
High Five States				
Maine	5.7 <sup>bc</sup>	0.28	(01)	29.5
New Hampshire	5.7 <sup>bc</sup>	0.31	(02)	29.5
Delaware	5.5 <sup>b</sup>	0.38	(03)	25.0
Vermont	5.4 <sup>b</sup>	0.42	(04)	22.7
Rhode Island	5.3 <sup>b</sup>	0.30	(05)	20.5
Low Five States				
Mississippi	3.8 <sup>c</sup>	0.17	(47)	-13.6
Texas	3.8 <sup>c</sup>	0.07	(48)	-13.6
Alabama	3.4 <sup>bc</sup>	0.12	(49)	-22.7
Utah	3.4 <sup>bc</sup>	0.21	(50)	-22.7
Hawaii	2.8 <sup>bc</sup>	0.21	(51)	-36.4

Males

State	Rate	SE	Rank	PD
TOTAL U.S.	7.6	0.04		
High Five States				
Maine	10.0 <sup>bc</sup>	0.60	(01)	31.6
New Hampshire	9.9 <sup>b</sup>	0.66	(02)	30.3
Rhode Island	9.4 <sup>b</sup>	0.65	(03)	23.7
Vermont	9.3 <sup>b</sup>	0.90	(04)	22.4
Delaware	9.1 <sup>b</sup>	0.79	(05)	19.7
Low Five States				
Colorado	6.3 <sup>bc</sup>	0.32	(47)	-17.1
Alabama	6.3 <sup>bc</sup>	0.28	(48)	-17.1
New Mexico	6.2 <sup>b</sup>	0.43	(49)	-18.4
Utah	6.0 <sup>bc</sup>	0.44	(50)	-21.1
Hawaii	4.2 <sup>bc</sup>	0.39	(51)	-44.7

Females

State	Rate	SE	Rank	PD
TOTAL U.S.	2.3	0.02		
High Five States				
District of Columbia	3.6 <sup>b</sup>	0.45	(01)	56.5
West Virginia	3.3 <sup>bc</sup>	0.23	(02)	43.5
Delaware	3.1 <sup>b</sup>	0.37	(03)	34.8
Vermont	3.1 <sup>b</sup>	0.40	(04)	34.8
Rhode Island	3.0 <sup>b</sup>	0.29	(05)	30.4
Low Five States				
North Dakota	1.8 <sup>b</sup>	0.29	(47)	-21.7
Alabama	1.8 <sup>bc</sup>	0.11	(48)	-21.7
Hawaii	1.7 <sup>b</sup>	0.22	(49)	-26.1
South Dakota	1.7 <sup>b</sup>	0.26	(50)	-26.1
Utah	1.6 <sup>b</sup>	0.19	(51)	-30.4

For additional detailed cancer statistics by state, please visit the State Cancer Profiles website. <http://statecancerprofiles.cancer.gov/>

<sup>a</sup> NCHS public use data file. Rates are per 100,000 and are age-adjusted to the 2000 US Std Population (19 age groups - Census P25-1130).  
<sup>b</sup> Absolute percent difference between state rate and total U.S. rate is 15% or more.  
<sup>c</sup> Difference between state rate and total U.S. rate is statistically significant (p<=.0002).  
 SE Standard error of the rate.  
 PD Percent difference between state rate and total U.S. rate.

Table XXVII-12  
URINARY BLADDER CANCER (Invasive)

Estimated United States Cancer Prevalence Counts<sup>a</sup> on January 1, 2002  
By Race/Ethnicity, Sex and Years Since Diagnosis

Years Since Diagnosis	0 to <5	5 to <10	10 to <15	15 to <20	20 to <25	0 to <12 <sup>e</sup>	0 to <27 <sup>e</sup>	>=27 <sup>g</sup>	Complete <sup>h</sup>
<b>Race/Sex</b>									
All Races <sup>b</sup>	184,483	122,644	79,318	48,761	29,222	342,732	471,823	27,376	499,199
Males	138,422	91,050	59,229	35,167	20,705	255,871	349,628	17,922	367,550
Females	46,061	31,594	20,089	13,594	8,517	86,861	122,195	9,454	131,649
White <sup>b</sup>	172,521	115,474	75,754	46,434	27,816	321,782	444,983	21,738	466,721
Males	130,313	85,835	56,672	33,456	19,791	241,279	330,853	13,986	344,839
Females	42,208	29,639	19,082	12,978	8,025	80,503	114,130	7,752	121,882
Black <sup>b</sup>	7,282	4,453	2,406	1,453	851	12,963	16,661	450	17,111
Males	4,533	3,155	1,668	1,075	560	8,502	11,147	357	11,504
Females	2,749	1,298	738	378	291	4,461	5,514	93	5,607
Asian/Pacific Islander <sup>c</sup>	2,241	1,364	+	+	+	3,946	+	+	+
Males	1,620	1,050	+	+	+	2,919	+	+	+
Females	621	314	+	+	+	1,027	+	+	+
Hispanic <sup>d</sup>	4,836	3,097	+	+	+	8,760	+	+	+
Males	3,653	2,339	+	+	+	6,600	+	+	+
Females	1,183	758	+	+	+	2,160	+	+	+

Estimated prevalence percent<sup>a</sup> on January 1, 2002, of the SEER 11 population diagnosed in the previous 10 years  
By Age at Prevalence, Race/Ethnicity and Sex

Age at Prevalence	Age Specific (Crude)										Age-Adjusted <sup>f</sup>
	All Ages	0-9	10-19	20-29	30-39	40-49	50-59	60-69	70-79	80+	All Ages
<b>Race/Sex</b>											
All Races <sup>c</sup>	0.0897%	0.0002%	0.0002%	0.0016%	0.0062%	0.0266%	0.0991%	0.3107%	0.6121%	0.7181%	0.0991%
Males	0.1366%	0.0002%	0.0003%	0.0021%	0.0083%	0.0410%	0.1577%	0.5145%	1.0893%	1.4417%	0.1758%
Females	0.0439%	-	-	0.0011%	0.0040%	0.0124%	0.0436%	0.1295%	0.2530%	0.3282%	0.0428%
White <sup>c</sup>	0.1068%	0.0002%	0.0002%	0.0020%	0.0071%	0.0303%	0.1135%	0.3581%	0.6879%	0.7743%	0.1112%
Males	0.1620%	0.0002%	0.0003%	0.0027%	0.0092%	0.0460%	0.1783%	0.5865%	1.2217%	1.5817%	0.1968%
Females	0.0520%	-	-	0.0013%	0.0048%	0.0143%	0.0503%	0.1498%	0.2803%	0.3459%	0.0476%
Black <sup>c</sup>	0.0301%	-	-	-	0.0036%	0.0144%	0.0525%	0.1427%	0.2537%	0.3490%	0.0460%
Males	0.0425%	-	-	-	0.0060%	0.0230%	0.0859%	0.2354%	0.4261%	0.5770%	0.0765%
Females	0.0189%	-	-	-	0.0015%	0.0068%	0.0246%	0.0696%	0.1403%	0.2424%	0.0257%
Asian/Pacific Islander <sup>c</sup>	0.0366%	-	-	-	0.0025%	0.0105%	0.0361%	0.1116%	0.2801%	0.4141%	0.0446%
Males	0.0559%	-	-	-	0.0036%	0.0173%	0.0593%	0.1903%	0.4778%	0.7221%	0.0762%
Females	0.0186%	-	-	-	0.0015%	0.0043%	0.0158%	0.0466%	0.1336%	0.2028%	0.0208%
Hispanic <sup>d</sup>	0.0202%	-	-	0.0007%	0.0035%	0.0109%	0.0417%	0.1412%	0.2810%	0.3988%	0.0476%
Males	0.0295%	-	-	0.0007%	0.0039%	0.0153%	0.0656%	0.2502%	0.5216%	0.7709%	0.0862%
Females	0.0104%	-	-	-	0.0032%	0.0064%	0.0197%	0.0514%	0.1098%	0.1940%	0.0206%

<sup>a</sup> US 2002 cancer prevalence counts are based on 2002 cancer prevalence proportions from the SEER registries and 1/1/2002 US population estimates based on the average of 2001 and 2002 population estimates from the US Bureau of the Census. Prevalence was calculated using the First Malignant Primary Only for a person.

<sup>b c d</sup> Statistics based on b) SEER 9 Areas c) SEER 11 Areas and Rural Georgia d) SEER 11 Areas excluding Hawaii and Detroit.

<sup>e</sup> Maximum limited-duration prevalence: 27 years for 1975-2002 SEER 9 data; 12 years for 1990-2002 SEER 11 data (used to calculate prevalence for Hispanics and Asian Pacific Islanders).

<sup>f</sup> Percentages are age-adjusted to the 2000 US standard population by 5-year age groups.

<sup>g h</sup> (g) Cases diagnosed more than 27 years ago were estimated using the completeness index method (Capocaccia et. al. 1997, Merrill et. al. 2000). (h) Complete prevalence is obtained by summing 0 to <27 and >=27.

- Statistic not shown. Statistic based on fewer than 5 cases estimated alive in SEER for the time interval.

+ Not available.

# SEER Incidence, Delay Adjusted Incidence and US Death Rates+ Urinary Bladder Cancer, by Race and Sex

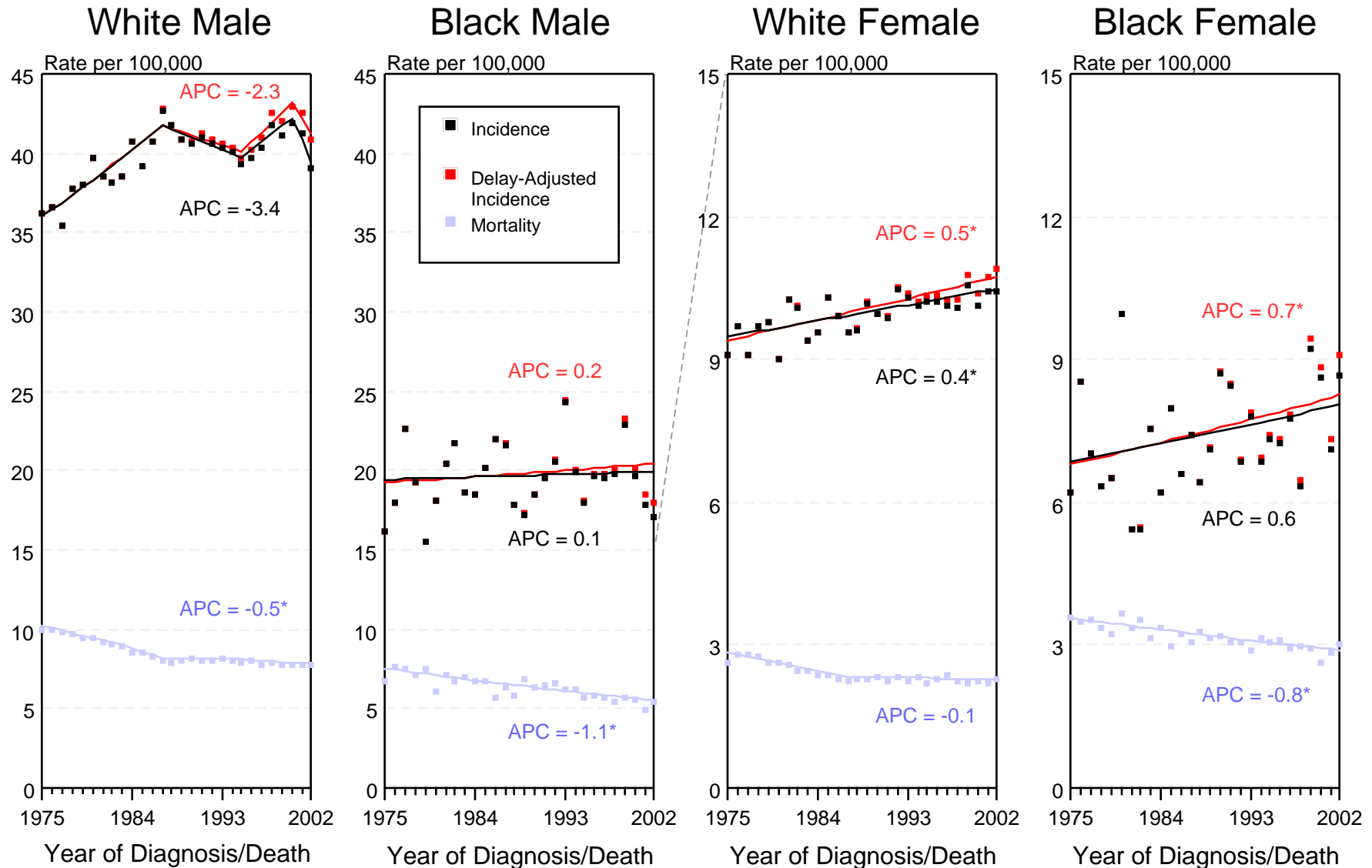


Figure XXVII-1

+ Source: SEER 9 areas and NCHS public use data file for the total US. Rates are age-adjusted to the 2000 US Std Population (19 age groups - Census P25-1103). Regression lines and APCs are calculated using the Joinpoint Regression Program Version 3.0, April 2005, National Cancer Institute.

The APC is the Annual Percent Change for the regression line segments. The APC shown on the graph is for the most recent trend.

\* The APC is significantly different from zero ( $p < 0.05$ ).

# SEER Incidence and US Death Rates + Urinary Bladder Cancer, Both Sexes

Joinpoint Analyses for 1975-2002 for Whites and Blacks

Rates for 1992-2002 for Asian/Pacific Islander, American Indian/Alaska Native and Hispanic

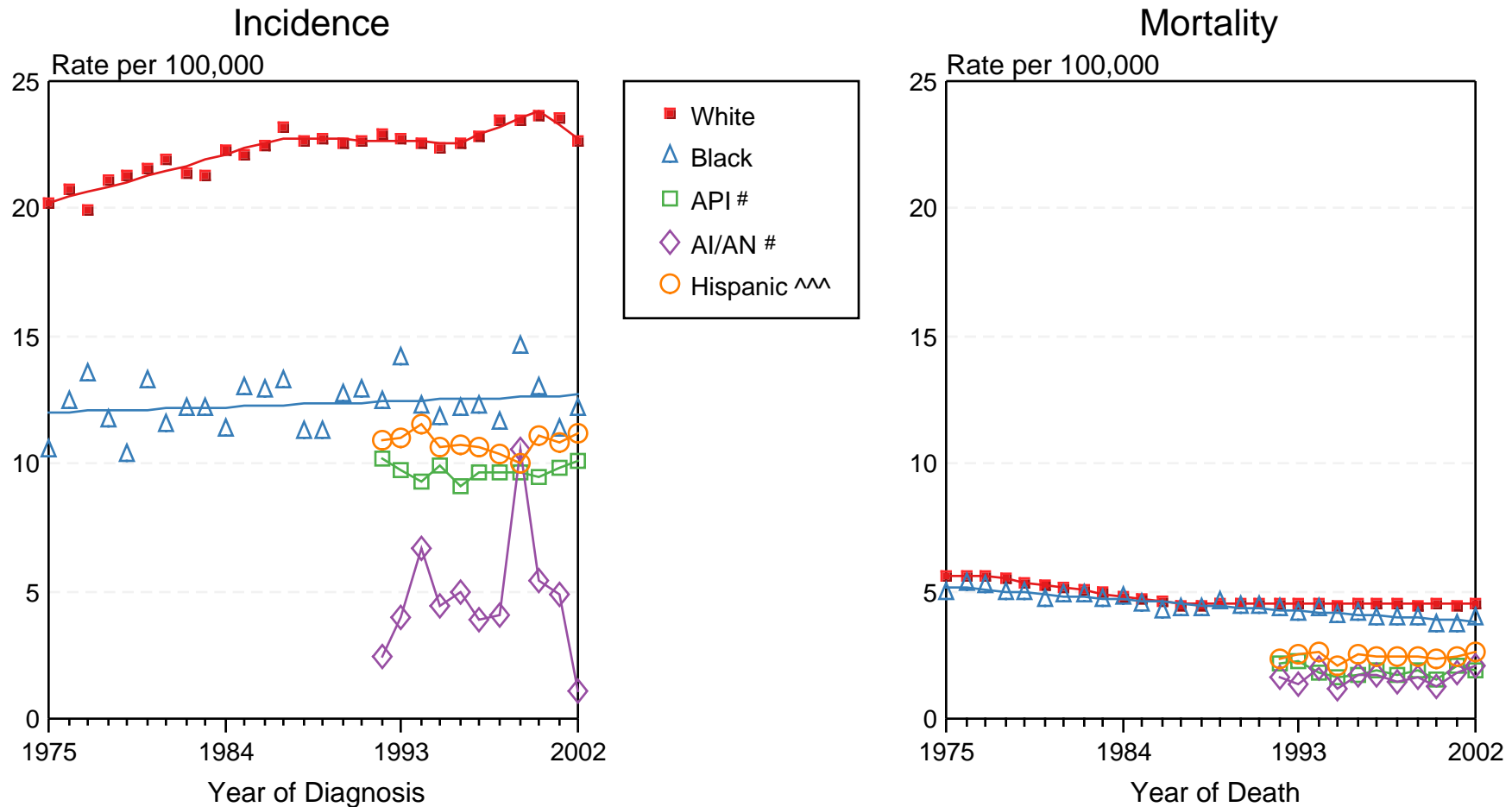


Figure XXVII-2

+ Source: Incidence data for whites and blacks is from the SEER 9 areas (San Francisco, Connecticut, Detroit, Hawaii, Iowa, New Mexico, Seattle, Utah, Atlanta). Incidence data for Asian/Pacific Islanders, American Indian/Alaska Natives and Hispanics is from the SEER 13 Areas (SEER 9 Areas, San Jose-Monterey, Los Angeles, Alaska Native Registry and Rural Georgia). Mortality data is from NCHS public use data file for the total US. Rates are age-adjusted to the 2000 US Std Population (19 age groups - Census P25-1103). Regression lines for whites and blacks are calculated using the Joinpoint Regression Program Version 3.0, April 2005, National Cancer Institute.

# API = Asian/Pacific Islander. AI/AN = American Indian/Alaska Native.

^^ Hispanic is not mutually exclusive from Whites, Blacks, Asian/Pacific Islanders, and American Indians/Alaska Natives. Incidence data for Hispanics excludes cases from Detroit, Hawaii, Alaska Native Registry and Rural Georgia. Mortality data for Hispanics excludes cases from Connecticut, Maine, Maryland, Minnesota, Oklahoma, New Hampshire, New York, North Dakota, and Vermont.