

Table XIX-1
NON-HODGKIN LYMPHOMA (Invasive)

TRENDS IN SEER INCIDENCE^a AND U.S. MORTALITY^b USING THE JOINPOINT REGRESSION PROGRAM, 1975-2002
WITH UP TO THREE JOINPOINTS BY RACE AND SEX

		<u>Joinpoint Segment 1</u>		<u>Joinpoint Segment 2</u>		<u>Joinpoint Segment 3</u>		<u>Joinpoint Segment 4</u>	
		Year	APC	Year	APC	Year	APC	Year	APC
<u>SEER Cancer Incidence^a</u>									
All Races	Male and Female	1975-1990	3.6 ^c	1990-1995	1.5 ^c	1995-2002	-0.3		
All Races	Male	1975-1991	4.3 ^c	1991-2002	-0.1				
All Races	Female	1975-1990	2.9 ^c	1990-2002	0.9 ^c				
White	Male and Female	1975-1990	3.7 ^c	1990-1995	1.2	1995-2002	-0.2		
White	Male	1975-1991	4.3 ^c	1991-2002	-0.1				
White	Female	1975-1990	2.9 ^c	1990-2002	0.9 ^c				
Black	Male and Female	1975-1995	4.5 ^c	1995-2002	-1.8				
Black	Male	1975-1995	5.5 ^c	1995-2002	-4.0 ^c				
Black	Female	1975-2002	2.7 ^c						
<u>SEER Delay-Adjusted Incidence^a</u>									
All Races	Male and Female	1975-1991	3.7 ^c	1991-2002	0.5 ^c				
All Races	Male	1975-1991	4.3 ^c	1991-2002	0.2				
All Races	Female	1975-1990	2.9 ^c	1990-2002	1.2 ^c				
White	Male and Female	1975-1991	3.7 ^c	1991-2002	0.6 ^c				
White	Male	1975-1991	4.3 ^c	1991-2002	0.2				
White	Female	1975-1990	2.9 ^c	1990-2002	1.3 ^c				
Black	Male and Female	1975-1995	4.6 ^c	1995-2002	-1.1				
Black	Male	1975-1995	5.6 ^c	1995-2002	-3.3 ^c				
Black	Female	1975-2002	2.9 ^c						
<u>U.S. Cancer Mortality^b</u>									
All Races	Male and Female	1975-1991	2.5 ^c	1991-1997	1.6 ^c	1997-2002	-3.1 ^c		
All Races	Male	1975-1981	1.8 ^c	1981-1990	3.0 ^c	1990-1997	1.6 ^c	1997-2002	-2.8 ^c
All Races	Female	1975-1994	2.2 ^c	1994-1997	1.0	1997-2002	-3.2 ^c		
White	Male and Female	1975-1991	2.5 ^c	1991-1997	1.6 ^c	1997-2002	-3.1 ^c		
White	Male	1975-1996	2.5 ^c	1996-2002	-2.4 ^c				
White	Female	1975-1997	2.1 ^c	1997-2002	-3.7 ^c				
Black	Male and Female	1975-1996	2.7 ^c	1996-2002	-2.5 ^c				
Black	Male	1975-1997	2.7 ^c	1997-2002	-4.0 ^c				
Black	Female	1975-1996	2.7 ^c	1996-2002	-1.9 ^c				

Joinpoint Regression Program Version 3.0, April 2005, National Cancer Institute. (<http://srab.cancer.gov/joinpoint/>).

The APC is the Annual Percent Change based on rates age-adjusted to the 2000 US Std Population (19 age groups - Census P25-1130).

^a Trends are from the SEER 9 areas.

^b Trends are from the NCHS public use data file for the total US.

^c The APC is significantly different from zero (p<.05).

Table XIX-2
NON-HODGKIN LYMPHOMA

SEER INCIDENCE RATES, AGE-ADJUSTED AND AGE-SPECIFIC RATES^a, BY RACE AND SEX

	All Races			Whites			Blacks		
	Total	Males	Females	Total	Males	Females	Total	Males	Females
<u>AGE-ADJUSTED RATES</u>									
YEAR OF DIAGNOSIS:									
1975	11.1	12.9	9.6	11.6	13.5	10.1	6.4	7.3	5.3
1976	11.2	12.8	10.0	11.6	13.2	10.5	6.0	7.4	4.9
1977	11.2	12.9	9.8	11.6	13.5	10.2	6.6	7.2	6.1
1978	11.9	14.3	10.1	12.5	14.8	10.7	7.2	9.5	5.2
1979	12.5	14.2	11.2	13.0	14.6	11.8	8.5	12.0	5.9
1980	12.6	15.0	10.8	12.9	15.2	11.2	8.7	10.9	7.0
1981	13.6	15.9	11.8	14.0	16.3	12.3	7.4	10.5	5.0
1982	13.4	15.5	11.6	14.0	16.4	12.0	10.3	10.2	10.0
1983	14.0	16.6	11.9	14.6	17.5	12.4	10.3	10.9	9.6
1984	15.2	18.3	12.8	15.9	19.0	13.5	9.4	12.5	6.7
1985	15.5	18.3	13.2	16.2	19.2	13.8	9.9	12.0	8.3
1986	15.9	19.4	13.0	16.8	20.5	13.7	10.6	13.1	8.5
1987	16.7	20.8	13.4	17.7	22.1	14.0	10.3	10.4	10.0
1988	17.2	21.3	14.0	18.2	22.4	14.9	11.6	15.8	8.5
1989	17.3	21.6	13.8	18.3	23.0	14.4	11.7	14.3	9.8
1990	18.5	23.0	14.8	19.4	24.0	15.5	13.8	17.6	10.8
1991	18.8	23.7	14.6	19.6	24.8	15.3	14.0	18.8	10.3
1992	18.7	23.1	15.0	19.6	24.0	15.8	13.6	18.7	9.6
1993	18.9	23.5	15.0	19.7	24.3	15.7	13.9	19.1	9.6
1994	19.9	24.9	15.8	20.6	25.5	16.5	14.3	21.3	8.7
1995	19.9	25.3	15.3	20.6	26.1	15.9	16.4	23.3	11.1
1996	19.3	24.2	15.4	20.1	25.1	16.1	15.0	18.9	11.7
1997	19.9	24.4	16.4	20.8	25.1	17.4	16.2	23.8	10.9
1998	19.4	22.8	16.6	20.4	23.9	17.5	13.8	16.5	11.7
1999	19.6	24.2	16.0	20.6	25.1	16.9	13.8	17.9	10.7
2000	19.4	23.8	15.8	20.5	25.1	16.8	13.6	17.8	10.4
2001	19.4	23.7	15.9	20.1	24.7	16.4	15.2	17.6	13.0
2002	19.3	23.2	16.3	20.3	24.3	17.1	14.0	16.7	11.9
<u>AGE-ADJUSTED RATES, 1998-2002</u>									
AGE AT DIAGNOSIS:									
All ages	19.4	23.6	16.1	20.4	24.6	16.9	14.1	17.3	11.6
Under 65	9.6	11.6	7.7	10.0	11.9	8.0	9.2	11.6	7.2
65 and over	87.2	106.1	74.3	92.4	112.2	78.9	47.6	56.8	41.9
All ages(IARC world std) ^b	13.1	15.8	10.7	13.7	16.4	11.3	10.2	12.6	8.3
<u>AGE-SPECIFIC RATES, 1998-2002</u>									
AGE AT DIAGNOSIS:									
<1	-	-	-	-	-	-	-	-	-
1-4	0.6	-	-	0.6	-	-	-	-	-
5-9	1.0	1.4	0.6	1.0	1.4	-	-	-	-
10-14	1.3	1.8	0.9	1.3	1.8	0.8	-	-	-
15-19	1.6	2.1	1.1	1.7	2.3	1.2	-	-	-
20-24	2.4	3.0	1.9	2.4	3.1	1.7	2.5	-	-
25-29	3.5	4.2	2.8	3.3	4.1	2.5	4.9	6.1	3.9
30-34	5.2	6.8	3.5	5.2	6.9	3.5	6.1	8.3	4.0
35-39	7.6	9.6	5.6	7.4	9.1	5.6	9.9	14.6	5.8
40-44	11.2	14.4	8.0	11.2	14.4	8.1	13.6	18.4	9.4
45-49	15.6	18.9	12.4	16.0	19.0	12.9	16.5	21.6	12.1
50-54	22.4	26.8	18.2	23.2	28.1	18.4	21.2	24.9	18.1
55-59	32.3	36.9	27.9	34.3	39.1	29.6	25.6	29.9	22.0
60-64	44.2	51.5	37.5	47.4	54.1	41.0	31.6	38.5	26.0
65-69	64.4	75.9	54.5	69.1	80.8	58.8	42.2	49.3	36.8
70-74	81.2	97.3	68.5	86.9	102.9	74.0	44.8	59.7	34.6
75-79	100.8	122.7	85.4	107.3	131.4	90.2	48.9	48.3	49.3
80-84	108.0	132.7	92.9	112.8	137.9	97.5	53.6	75.5	42.1
85+	102.1	131.3	89.6	105.5	137.4	92.2	56.5	-	54.8

^a SEER 9 areas. Rates are per 100,000 and are age-adjusted to the 2000 US Std Population (19 age groups - Census P25-1130), unless noted.

^b SEER 9 areas. Rates are per 100,000 and are age-adjusted to the IARC world standard population.

- Statistic not shown. Rate based on less than 25 cases for the time interval.

Table XIX-3
NON-HODGKIN LYMPHOMA

U.S. DEATH RATES, AGE-ADJUSTED AND AGE-SPECIFIC RATES^a, BY RACE AND SEX

	All Races			Whites			Blacks		
	Total	Males	Females	Total	Males	Females	Total	Males	Females
<u>AGE-ADJUSTED RATES</u>									
YEAR OF DEATH:									
1975	5.6	6.9	4.6	5.8	7.2	4.8	3.7	4.8	2.9
1976	5.7	6.9	4.8	5.9	7.1	5.0	3.5	4.5	2.8
1977	5.8	6.9	4.9	6.0	7.1	5.1	3.9	4.9	3.1
1978	5.9	7.3	4.9	6.2	7.5	5.1	3.9	5.4	2.8
1979	5.9	7.4	4.9	6.2	7.7	5.1	3.6	4.5	3.0
1980	6.2	7.5	5.3	6.5	7.7	5.5	4.0	5.1	3.1
1981	6.2	7.4	5.3	6.4	7.7	5.5	4.0	5.0	3.3
1982	6.6	8.0	5.5	6.8	8.3	5.7	4.1	5.2	3.3
1983	6.7	8.1	5.6	6.9	8.4	5.8	4.3	5.8	3.2
1984	6.8	8.2	5.8	7.1	8.5	6.0	4.2	5.3	3.4
1985	7.1	8.8	5.8	7.3	9.2	6.0	4.6	5.6	3.9
1986	7.3	9.0	6.0	7.6	9.3	6.3	4.9	6.6	3.7
1987	7.3	8.8	6.1	7.6	9.1	6.4	4.7	6.3	3.6
1988	7.5	9.3	6.2	7.8	9.6	6.5	5.0	6.8	3.7
1989	7.8	9.7	6.4	8.1	10.0	6.7	5.3	7.1	4.1
1990	7.9	10.0	6.3	8.2	10.3	6.6	5.4	7.1	4.2
1991	8.2	10.1	6.7	8.5	10.5	7.0	5.7	7.2	4.6
1992	8.2	10.3	6.7	8.5	10.7	7.0	5.6	7.2	4.5
1993	8.2	10.1	6.9	8.6	10.5	7.2	5.7	7.5	4.4
1994	8.6	10.8	7.1	9.0	11.2	7.4	5.5	6.8	4.6
1995	8.7	10.8	7.2	9.1	11.2	7.5	5.8	7.6	4.5
1996	8.8	10.9	7.1	9.1	11.3	7.5	6.2	8.2	4.7
1997	8.9	11.0	7.3	9.2	11.4	7.6	6.3	8.4	4.9
1998	8.7	10.9	7.1	9.0	11.3	7.4	6.0	7.5	4.9
1999	8.3	10.4	6.9	8.7	10.7	7.2	5.7	7.4	4.4
2000	8.2	10.2	6.7	8.5	10.6	7.0	5.2	6.6	4.2
2001	7.9	9.9	6.4	8.2	10.3	6.7	5.6	7.3	4.5
2002	7.6	9.6	6.2	7.9	10.0	6.4	5.4	6.9	4.4
<u>AGE-ADJUSTED RATES, 1998-2002</u>									
AGE AT DEATH:									
All ages	8.1	10.2	6.6	8.5	10.6	6.9	5.6	7.1	4.5
Under 65	2.5	3.2	1.9	2.6	3.2	1.9	2.6	3.4	1.9
65 and over	46.9	58.5	39.5	49.3	61.3	41.5	25.9	32.6	22.0
All ages(IARC world std) ^b	4.7	5.9	3.8	4.9	6.1	3.9	3.6	4.7	2.9
<u>AGE-SPECIFIC RATES, 1998-2002</u>									
AGE AT DEATH:									
<1	-	-	-	-	-	-	-	-	-
1-4	0.1	0.1	-	0.1	0.1	-	-	-	-
5-9	0.1	0.1	-	0.1	0.1	-	-	-	-
10-14	0.1	0.2	0.1	0.1	0.2	0.1	-	-	-
15-19	0.3	0.4	0.2	0.3	0.4	0.1	0.3	0.4	0.3
20-24	0.5	0.6	0.4	0.5	0.6	0.4	0.6	0.7	0.5
25-29	0.6	0.8	0.5	0.6	0.7	0.4	1.1	1.2	0.9
30-34	0.9	1.2	0.7	0.9	1.1	0.6	1.2	1.7	0.8
35-39	1.4	1.8	1.0	1.3	1.7	0.9	2.0	2.7	1.4
40-44	2.1	2.8	1.4	2.1	2.7	1.4	2.7	3.7	1.9
45-49	3.5	4.6	2.5	3.5	4.6	2.4	4.3	5.6	3.2
50-54	5.8	7.5	4.2	5.9	7.6	4.3	6.1	8.5	4.2
55-59	10.1	12.6	7.7	10.4	12.9	8.0	9.8	12.7	7.5
60-64	16.1	19.6	12.8	16.8	20.4	13.6	12.6	16.4	9.6
65-69	24.6	30.5	19.6	25.9	32.0	20.6	17.6	22.5	14.0
70-74	37.1	45.4	30.5	38.9	47.4	32.0	23.8	30.7	19.3
75-79	53.0	64.7	44.8	55.6	67.7	47.2	27.5	34.6	23.3
80-84	70.6	86.7	61.1	74.2	91.0	64.2	34.2	39.1	31.7
85+	78.4	103.9	67.9	82.5	109.2	71.4	36.3	48.2	31.8

^a NCHS public use data file for the total US. Rates are per 100,000 and are age-adjusted to the 2000 US Std Population (19 age groups - Census P25-1130), unless noted.

^b NCHS public use data file for the total US. Rates are per 100,000 and are age-adjusted to the IARC world standard population.

- Statistic not shown. Rate based on less than 25 cases for the time interval.

Table XIX-4
NON-HODGKIN LYMPHOMA

SURVIVAL RATES, BY RACE, SEX, DIAGNOSIS YEAR AND AGE

	<u>All Races</u>			<u>Whites</u>			<u>Blacks</u>		
	<u>Total</u>	<u>Males</u>	<u>Females</u>	<u>Total</u>	<u>Males</u>	<u>Females</u>	<u>Total</u>	<u>Males</u>	<u>Females</u>
<u>5-YR RELATIVE SURVIVAL RATES</u>									
YEAR OF DIAGNOSIS:									
1960-1963 ^a	-	-	-	31	31	31	-	-	-
1970-1973 ^a	-	-	-	41	39	43	-	-	-
1974-1976 ^b	47.3	47.2	47.4	47.8	48.1	47.5	48.0	43.2 ^e	54.0 ^e
1977-1979 ^b	48.5	45.9	51.2	48.7	46.5	51.0	51.6	45.0	60.2 ^e
1980-1982 ^b	51.4	50.2	52.6	51.8	50.8	52.9	50.5	47.9	53.5
1983-1985 ^b	53.9	52.8	55.1	54.4	53.4	55.5	44.8	43.2	46.4
1986-1988 ^b	52.3	49.5	55.8	52.8	50.0	56.1	50.7	47.5	54.6
1989-1991 ^b	51.4	47.3	56.7	52.1	48.0	57.4	43.7	38.2	51.1
1992-1994 ^b	53.5	48.7	59.5	54.5	50.0	60.1	42.5	37.1	52.5
1995-2001 ^b	60.2 ^d	58.2 ^d	62.6 ^d	61.2 ^d	59.5 ^d	63.3 ^d	52.3	47.6	59.1
<u>5-YR PERIOD SURVIVAL RATES^{bc}</u>									
YEAR OF DIAGNOSIS:									
1995-2001	62.8	61.3	64.6	63.9	62.7	65.3	55.6	50.2	62.5
<u>5-YR RELATIVE SURVIVAL RATES, 1995-2001^b</u>									
AGE AT DIAGNOSIS:									
<45	65.2	60.6	74.5	67.4	62.8	76.9	51.3	45.9	62.0
45-54	69.6	64.7	77.2	71.4	66.5	79.0	58.0	53.3	65.0
55-64	65.7	62.8	69.3	66.6	64.1	69.7	55.8	48.4 ^e	63.7
65-74	58.6	55.8	61.4	59.6	56.6	62.5	48.2	42.9 ^e	52.8 ^e
75+	44.1	44.0	44.1	45.0	45.1	44.9	36.7 ^e	38.2 ^e	33.6 ^e
Under 65	66.7	62.5	73.3	68.3	64.4	74.6	54.4	48.7	63.5
65 and over	52.0	51.0	52.8	52.9	51.9	53.7	44.3	41.6	46.7

^a Rates are based on End Results data from a series of hospital registries and one population-based registry.

^b Rates are from the SEER 9 areas (San Francisco, Connecticut, Detroit, Hawaii, Iowa, New Mexico, Seattle, Utah, Atlanta). Rates are based on follow-up of patients into 2002.

^c Period survival provides a more up-to-date estimate of survival by piecing together the most recent conditional survival estimates from several cohorts. It is computed here using three calendar year blocks (1999-2001: 0-1 year survival), (1998-2000: 1-2 year survival), (1997-1999: 2-3 year survival), (1996-1998: 3-4 year survival), (1995-1997: 4-5 years survival).

^d The difference in rates between 1974-1976 and 1995-2001 is statistically significant ($p < .05$).

^e The standard error of the survival rate is between 5 and 10 percentage points.

^f The standard error of the survival rate is greater than 10 percentage points.

- Statistic could not be calculated.

Table XIX-5
NON-HODGKIN LYMPHOMA

SURVIVAL RATES^a

By Year of Diagnosis

All Races, Males and Females

Year of Diagnosis

	1975- 1979	1980- 1984	1985	1986	1987	1988	1989	1990	1991	1992	1993	1994	1995	1996	1997	1998	1999	2000	2001
Relative Survival Rates (SEER ^b)																			
1-year	71.2	74.1	72.8	71.0	73.1	72.0	71.4	70.7	70.4	71.4	71.7	71.3	70.7	73.7	76.4	77.1	77.9	77.3	78.9
2-year	61.0	64.7	64.2	62.6	64.1	63.0	63.2	61.6	61.4	62.8	63.8	63.6	62.5	66.3	68.9	70.5	71.4	71.7	
3-year	55.6	59.7	59.7	58.6	59.4	59.2	58.0	57.1	57.2	58.6	59.3	59.4	58.1	62.8	65.6	67.2	67.5		
4-year	51.8	55.9	56.1	54.9	56.2	55.1	54.5	53.1	54.7	55.5	56.5	56.2	55.6	59.7	63.1	64.8			
5-year	48.4	52.5	53.6	51.6	53.0	52.3	51.3	50.9	52.0	52.5	53.9	53.9	53.2	57.3	61.0				
6-year	45.3	49.5	51.4	49.0	50.2	50.3	48.8	48.6	49.3	50.2	51.9	52.2	51.2	55.7					
7-year	42.9	47.3	48.5	47.3	48.0	48.3	46.7	46.1	46.6	47.9	50.4	50.6	49.6						
8-year	40.9	45.4	46.6	45.1	45.7	46.3	44.0	44.3	44.4	46.6	48.6	48.9							
9-year	39.3	43.7	45.1	43.1	43.7	44.7	42.5	43.1	43.0	45.7	47.3								
10-year	38.1	42.1	43.5	41.6	42.7	43.6	40.8	42.4	41.9	44.2									
11-year	36.9	40.9	42.4	41.0	41.6	42.5	39.4	40.8	40.7										
12-year	36.0	39.8	41.3	39.7	40.4	41.1	37.9	39.5											
13-year	35.3	38.9	39.8	38.5	39.8	40.3	37.3												
14-year	34.4	38.1	38.8	38.0	38.9	39.9													
15-year	33.3	37.1	38.3	37.1	38.0														
16-year	32.5	36.4	37.4	36.3															
17-year	32.3	35.9	36.6																
18-year	32.1	35.5																	
19-year	31.6																		
20-year	31.1																		

^a Survival rates are relative rates expressed as percents.
^b Rates are from the SEER 9 areas.

Table XIX-6
NON-HODGKIN LYMPHOMA

SURVIVAL RATES^a

By Year of Diagnosis

All Races, Males

Year of Diagnosis

	1975- 1979	1980- 1984	1985	1986	1987	1988	1989	1990	1991	1992	1993	1994	1995	1996	1997	1998	1999	2000	2001
Relative Survival Rates (SEER ^b)																			
1-year	70.4	73.7	71.7	70.1	69.7	68.8	68.5	66.5	66.7	68.5	68.4	67.9	67.2	71.8	75.7	75.6	76.6	76.5	78.1
2-year	60.2	64.8	63.0	61.6	60.9	60.1	59.2	57.6	57.1	58.3	59.4	60.1	59.0	64.1	67.7	69.1	69.9	70.8	
3-year	54.3	59.3	58.2	57.6	56.3	55.6	54.0	52.6	52.7	54.5	54.7	55.5	54.9	60.7	64.6	65.8	65.1		
4-year	50.5	55.3	53.7	53.1	52.8	51.5	50.3	48.8	50.1	50.9	51.7	52.2	52.3	57.3	62.0	63.8			
5-year	46.8	51.8	50.6	49.7	49.9	48.8	47.0	46.7	48.0	47.1	49.0	49.8	49.6	54.9	59.8				
6-year	44.1	48.7	48.0	46.7	47.1	46.9	44.4	45.0	45.4	45.5	47.1	48.4	47.7	52.7					
7-year	41.8	46.3	45.1	44.9	45.6	45.4	41.7	42.5	42.7	43.3	46.5	47.0	46.3						
8-year	40.0	44.5	43.2	42.5	43.1	44.2	39.5	41.1	40.5	42.2	44.8	45.0							
9-year	38.1	42.8	41.4	40.7	40.8	42.9	38.2	39.9	38.9	41.3	43.7								
10-year	36.9	41.0	40.3	39.2	39.8	41.8	36.9	39.3	38.1	39.7									
11-year	35.9	39.7	39.2	38.2	38.8	40.8	35.5	38.1	37.2										
12-year	35.2	38.9	37.9	37.4	37.8	39.8	34.0	36.8											
13-year	34.2	38.3	36.5	36.3	37.7	39.1	33.7												
14-year	33.1	37.6	35.9	35.3	36.8	39.1													
15-year	31.8	36.9	35.7	34.0	36.1														
16-year	31.1	35.9	35.4	33.9															
17-year	30.7	35.5	34.5																
18-year	30.7	35.3																	
19-year	30.6																		
20-year	30.4																		

^a Survival rates are relative rates expressed as percents.
^b Rates are from the SEER 9 areas.

Table XIX-7
NON-HODGKIN LYMPHOMA

SURVIVAL RATES^a

By Year of Diagnosis

All Races, Females

Year of Diagnosis

	1975- 1979	1980- 1984	1985	1986	1987	1988	1989	1990	1991	1992	1993	1994	1995	1996	1997	1998	1999	2000	2001
Relative Survival Rates (SEER ^b)																			
1-year	72.0	74.5	74.1	72.1	77.3	75.7	75.0	75.9	75.2	75.1	75.8	75.5	75.3	76.1	77.3	78.8	79.4	78.2	79.9
2-year	61.8	64.7	65.4	63.8	68.0	66.4	68.0	66.7	67.1	68.4	69.3	68.1	67.0	69.1	70.4	72.1	73.2	72.7	
3-year	56.8	60.0	61.4	59.9	63.1	63.5	62.9	62.7	63.2	63.8	65.0	64.3	62.3	65.6	66.8	68.7	70.3		
4-year	53.2	56.6	58.8	57.0	60.4	59.5	59.8	58.5	60.8	61.3	62.5	61.2	60.0	62.7	64.4	65.9			
5-year	49.9	53.3	56.8	53.7	56.9	56.6	56.6	56.1	57.3	59.2	60.1	59.2	58.0	60.3	62.4				
6-year	46.5	50.5	55.1	51.6	53.9	54.1	54.2	53.1	54.7	56.1	58.0	57.2	55.8	59.6					
7-year	44.1	48.3	52.4	50.1	50.9	51.9	52.8	50.6	51.7	53.7	55.3	55.1	54.1						
8-year	41.9	46.4	50.4	48.3	48.9	48.9	49.8	48.2	49.8	52.2	53.5	54.0							
9-year	40.5	44.6	49.2	46.1	47.2	46.9	47.9	47.1	48.4	51.4	51.9								
10-year	39.4	43.2	47.1	44.5	46.3	45.7	45.7	46.2	47.0	50.0									
11-year	37.9	42.2	45.9	44.4	45.1	44.4	44.3	44.0	45.5										
12-year	36.8	40.8	45.1	42.5	43.5	42.7	42.8	42.9											
13-year	36.4	39.6	43.6	41.2	42.2	41.4	41.9												
14-year	35.6	38.7	42.0	40.8	41.3	40.7													
15-year	34.7	37.4	40.8	40.8	40.3														
16-year	34.0	36.9	39.4	39.2															
17-year	33.8	36.3	38.8																
18-year	33.4	35.7																	
19-year	32.6																		
20-year	31.8																		

^a Survival rates are relative rates expressed as percents.
^b Rates are from the SEER 9 areas.

Table XIX-8

NON-HODGKIN LYMPHOMANUMBER OF CASES

By SEER Location and Year of Diagnosis, 1975-2002

All Races, Males, All Ages

SEER Location	Year of Diagnosis													
	1975- 1976	1977- 1978	1979- 1980	1981- 1982	1983- 1984	1985- 1986	1987- 1988	1989- 1990	1991- 1992	1993- 1994	1995- 1996	1997- 1998	1999- 2000	2001- 2002
SEER 9	1977	2115	2334	2594	2961	3331	3851	4256	4673	5031	5299	5153	5389	5465
SEER 9 except SF-Oakland	1607	1733	1943	2168	2453	2658	2997	3260	3602	3942	4140	4271	4413	4493
San Francisco- Oakland SMSA ^b	370	382	391	426	508	673	854	996	1071	1089	1159	882	976	972
San Francisco City/County	110	92	93	105	167	246	360	463	445	403	453	237	256	232

AGE-ADJUSTED CANCER INCIDENCE RATES^a

By SEER Location and Year of Diagnosis, 1975-2002

All Races, Males, All Ages

SEER Location	Year of Diagnosis													
	1975- 1976	1977- 1978	1979- 1980	1981- 1982	1983- 1984	1985- 1986	1987- 1988	1989- 1990	1991- 1992	1993- 1994	1995- 1996	1997- 1998	1999- 2000	2001- 2002
SEER 9	12.9	13.6	14.6	15.7	17.4	18.9	21.0	22.3	23.4	24.2	24.7	23.6	24.0	23.5
SEER 9 except SF-Oakland	12.5	13.3	14.5	15.7	17.3	18.2	19.7	20.6	21.8	22.7	23.2	23.3	23.5	23.0
San Francisco- Oakland SMSA ^b	14.4	15.3	14.9	15.9	18.0	22.4	27.7	30.5	31.6	31.8	32.8	24.9	26.9	26.0
San Francisco City/County	15.3	14.1	14.0	15.1	24.6	33.3	48.2	61.9	56.4	51.3	57.3	30.2	32.3	29.1

^a Rates are per 100,000 males and are age-adjusted to the 2000 US Std Population (19 age groups - Census P25-1130).

^b The San Francisco-Oakland SMSA represents 15% of all persons in the SEER areas. For this age group, all SEER areas may not be generalizable to the United States for Non-Hodgkin Lymphoma.

- Statistic not shown. Rate based on less than 4 cases for the time interval.

Table XIX-9

NON-HODGKIN LYMPHOMANUMBER OF CASES

By SEER Location and Year of Diagnosis, 1975-2002

All Races, Males, Ages 0-19

Year of Diagnosis

SEER Location	1975- 1976	1977- 1978	1979- 1980	1981- 1982	1983- 1984	1985- 1986	1987- 1988	1989- 1990	1991- 1992	1993- 1994	1995- 1996	1997- 1998	1999- 2000	2001- 2002
SEER 9	91	92	75	101	106	86	91	88	99	103	101	122	120	102
SEER 9 except SF-Oakland	82	75	66	87	96	74	83	74	88	88	82	103	103	90
San Francisco- Oakland SMSA ^b	9	17	9	14	10	12	8	14	11	15	19	19	17	12
San Francisco City/County	<4	6	<4	<4	<4	<4	0	<4	<4	<4	4	<4	0	<4

AGE-ADJUSTED CANCER INCIDENCE RATES^a

By SEER Location and Year of Diagnosis, 1975-2002

All Races, Males, Ages 0-19

Year of Diagnosis

SEER Location	1975- 1976	1977- 1978	1979- 1980	1981- 1982	1983- 1984	1985- 1986	1987- 1988	1989- 1990	1991- 1992	1993- 1994	1995- 1996	1997- 1998	1999- 2000	2001- 2002
SEER 9	1.3	1.3	1.1	1.5	1.6	1.3	1.4	1.3	1.4	1.4	1.4	1.6	1.6	1.3
SEER 9 except SF-Oakland	1.3	1.2	1.1	1.5	1.6	1.3	1.4	1.3	1.5	1.4	1.3	1.6	1.5	1.3
San Francisco- Oakland SMSA ^b	1.0	1.8	1.0	1.6	1.2	1.3	0.9	1.6	1.2	1.5	1.9	1.9	1.7	1.2
San Francisco City/County	-	3.8	-	-	-	-	0.0	-	-	-	2.9	-	0.0	-

^a Rates are per 100,000 males aged 0-19 and are age-adjusted to the 2000 US Std Population (19 age groups - Census P25-1130).

^b The San Francisco-Oakland SMSA represents 15% of all persons in the SEER areas. For this age group, all SEER areas may not be generalizable to the United States for Non-Hodgkin Lymphoma.

- Statistic not shown. Rate based on less than 4 cases for the time interval.

Table XIX-10

NON-HODGKIN LYMPHOMANUMBER OF CASES

By SEER Location and Year of Diagnosis, 1975-2002

All Races, Males, Ages 20-54

Year of Diagnosis

SEER Location	1975- 1976	1977- 1978	1979- 1980	1981- 1982	1983- 1984	1985- 1986	1987- 1988	1989- 1990	1991- 1992	1993- 1994	1995- 1996	1997- 1998	1999- 2000	2001- 2002
SEER 9	572	575	650	714	817	1066	1298	1593	1817	1963	1973	1628	1618	1640
SEER 9 except SF-Oakland	462	485	536	584	638	773	870	1040	1255	1394	1401	1267	1264	1305
San Francisco- Oakland SMSA ^b	110	90	114	130	179	293	428	553	562	569	572	361	354	335
San Francisco City/County	33	13	27	28	70	145	250	334	325	292	310	132	124	104

AGE-ADJUSTED CANCER INCIDENCE RATES^a

By SEER Location and Year of Diagnosis, 1975-2002

All Races, Males, Ages 20-54

Year of Diagnosis

SEER Location	1975- 1976	1977- 1978	1979- 1980	1981- 1982	1983- 1984	1985- 1986	1987- 1988	1989- 1990	1991- 1992	1993- 1994	1995- 1996	1997- 1998	1999- 2000	2001- 2002
SEER 9	6.8	6.7	7.6	8.2	9.1	11.3	12.8	14.8	16.0	16.3	15.6	12.5	12.0	11.8
SEER 9 except SF-Oakland	6.7	6.9	7.5	8.1	8.6	10.0	10.5	11.8	13.5	13.9	13.3	11.6	11.2	11.2
San Francisco- Oakland SMSA ^b	7.5	6.1	7.7	8.7	11.4	17.4	23.9	29.5	28.1	28.1	27.8	16.9	15.9	14.7
San Francisco City/County	9.5	4.0	7.8	7.9	20.1	36.9	63.4	84.3	77.1	68.6	72.1	29.1	27.1	22.2

^a Rates are per 100,000 males aged 20-54 and are age-adjusted to the 2000 US Std Population (19 age groups - Census P25-1130).

^b The San Francisco-Oakland SMSA represents 15% of all persons in the SEER areas. For this age group, all SEER areas may not be generalizable to the United States for Non-Hodgkin Lymphoma.

- Statistic not shown. Rate based on less than 4 cases for the time interval.

Table XIX-11

NON-HODGKIN LYMPHOMANUMBER OF CASES

By SEER Location and Year of Diagnosis, 1975-2002

All Races, Males, Ages 55+

SEER Location	Year of Diagnosis													
	1975- 1976	1977- 1978	1979- 1980	1981- 1982	1983- 1984	1985- 1986	1987- 1988	1989- 1990	1991- 1992	1993- 1994	1995- 1996	1997- 1998	1999- 2000	2001- 2002
SEER 9	1314	1448	1609	1779	2038	2179	2462	2575	2757	2965	3225	3403	3651	3723
SEER 9 except SF-Oakland	1063	1173	1341	1497	1719	1811	2044	2146	2259	2460	2657	2901	3046	3098
San Francisco- Oakland SMSA ^b	251	275	268	282	319	368	418	429	498	505	568	502	605	625
San Francisco City/County	76	73	63	76	95	99	110	128	119	109	139	102	132	127

AGE-ADJUSTED CANCER INCIDENCE RATES^a

By SEER Location and Year of Diagnosis, 1975-2002

All Races, Males, Ages 55+

SEER Location	Year of Diagnosis													
	1975- 1976	1977- 1978	1979- 1980	1981- 1982	1983- 1984	1985- 1986	1987- 1988	1989- 1990	1991- 1992	1993- 1994	1995- 1996	1997- 1998	1999- 2000	2001- 2002
SEER 9	42.6	46.3	49.2	52.5	58.2	60.2	66.7	68.1	70.3	73.4	77.3	79.0	82.4	80.5
SEER 9 except SF-Oakland	41.4	44.6	49.0	52.6	58.6	59.8	65.6	67.4	68.4	72.0	75.7	79.9	81.6	79.5
San Francisco- Oakland SMSA ^b	48.7	54.9	50.1	51.9	56.0	62.0	72.5	71.7	80.9	80.9	85.9	74.6	86.6	85.6
San Francisco City/County	48.6	51.6	44.2	51.1	66.3	67.5	77.1	91.6	83.0	77.9	95.8	70.5	87.8	82.9

^a Rates are per 100,000 males aged 55+ and are age-adjusted to the 2000 US Std Population (19 age groups - Census P25-1130).

^b The San Francisco-Oakland SMSA represents 15% of all persons in the SEER areas. For this age group, all SEER areas may not be generalizable to the United States for Non-Hodgkin Lymphoma.

- Statistic not shown. Rate based on less than 4 cases for the time interval.

Table XIX-12
NON-HODGKIN LYMPHOMA

Percent Diagnosed With Cancer In 10, 20 and 30 Years and In Remaining Lifetime,
Given Cancer Free At Current Age By Race and Sex

Lifetime Risk (Percent) of Being Diagnosed (13 SEER Areas) With Cancer and
Lifetime Risk (Percent) of Dying (Total U.S.) From Cancer

2000-2002

All Races

Current Age	Males				Females			
	+10 yrs	+20 yrs	+30 yrs	Eventually	+10 yrs	+20 yrs	+30 yrs	Eventually
0	0.01	0.03	0.06	2.18	0.01	0.02	0.04	1.82
10	0.02	0.05	0.13	2.21	0.01	0.04	0.08	1.84
20	0.03	0.11	0.27	2.20	0.03	0.07	0.17	1.83
30	0.08	0.24	0.54	2.19	0.05	0.14	0.36	1.81
40	0.16	0.47	0.97	2.15	0.10	0.31	0.71	1.78
50	0.31	0.84	1.52	2.06	0.22	0.62	1.18	1.72
60	0.56	1.30	1.79	1.88	0.42	1.01	1.47	1.57

Lifetime Risk of Being Diagnosed = 2.18%
Lifetime Risk of Dying = 0.94%

Lifetime Risk of Being Diagnosed = 1.82%
Lifetime Risk of Dying = 0.81%

Whites

Current Age	Males				Females			
	+10 yrs	+20 yrs	+30 yrs	Eventually	+10 yrs	+20 yrs	+30 yrs	Eventually
0	0.01	0.03	0.06	2.32	0.01	0.02	0.04	1.94
10	0.02	0.06	0.13	2.34	0.01	0.03	0.08	1.95
20	0.04	0.11	0.28	2.33	0.02	0.07	0.17	1.94
30	0.08	0.24	0.56	2.32	0.05	0.14	0.37	1.93
40	0.17	0.49	1.03	2.28	0.10	0.32	0.76	1.90
50	0.33	0.89	1.63	2.19	0.23	0.68	1.27	1.83
60	0.60	1.39	1.90	1.99	0.47	1.09	1.57	1.67

Lifetime Risk of Being Diagnosed = 2.32%
Lifetime Risk of Dying = 1.00%

Lifetime Risk of Being Diagnosed = 1.94%
Lifetime Risk of Dying = 0.86%

Blacks

Current Age	Males				Females			
	+10 yrs	+20 yrs	+30 yrs	Eventually	+10 yrs	+20 yrs	+30 yrs	Eventually
0	0.00	0.02	0.05	1.25	0.00	0.02	0.05	1.06
10	0.01	0.04	0.15	1.28	0.01	0.05	0.10	1.08
20	0.03	0.14	0.30	1.28	0.04	0.09	0.19	1.07
30	0.11	0.28	0.52	1.28	0.05	0.15	0.33	1.04
40	0.18	0.43	0.75	1.21	0.10	0.28	0.50	1.00
50	0.27	0.62	0.93	1.11	0.19	0.42	0.71	0.94
60	0.40	0.77	0.94	0.97	0.26	0.57	0.77	0.83

Lifetime Risk of Being Diagnosed = 1.25%
Lifetime Risk of Dying = 0.50%

Lifetime Risk of Being Diagnosed = 1.06%
Lifetime Risk of Dying = 0.43%

Devcan Version 6.0, April 2005, National Cancer Institute (<http://srab.cancer.gov/devcan/>).

Source: Incidence data are from the SEER 13 areas (San Francisco, Connecticut, Detroit, Hawaii, Iowa, New Mexico, Seattle, Utah, Atlanta, San Jose-Monterey, Los Angeles, Alaska Native Registry, Rural Georgia). Mortality data are from the NCHS public use data file for the total US.

Table XIX-13
NON-HODGKIN LYMPHOMA (Invasive)

SEER INCIDENCE AND U.S. MORTALITY
AGE-ADJUSTED RATES AND TRENDS^a
By Race/Ethnicity and Sex

Incidence^b

RACE/ETHNICITY	Rate 1998-2002			Trend 1992-2002		
	Rate per 100,000 persons			APC (%)		
	Total	Males	Females	Total	Males	Females
All Races	19.1	23.2	15.8	0.1	-0.5	0.8 ^e
White	20.2	24.4	16.7	0.1	-0.4	0.8 ^e
White Hispanic ^c	16.4	19.5	13.8	-0.5	-1.0	0.4
White Non-Hispanic ^c	20.7	25.1	17.0	0.1	-0.5	0.9 ^e
Black	14.2	17.6	11.6	0.3	-1.2	2.5 ^e
Asian/Pacific Islander	13.9	16.8	11.5	0.6	0.2	1.2
Amer Ind/Alaska Nat	8.8	10.2	7.5	1.8	2.2	-
Hispanic ^c	15.9	18.8	13.4	-0.4	-0.9	0.4

Mortality^d

RACE/ETHNICITY	Rate 1998-2002			Trend 1992-2002		
	Rate per 100,000 persons			APC (%)		
	Total	Males	Females	Total	Males	Females
All Races	8.1	10.2	6.6	-0.8	-0.7	-0.9
White	8.5	10.6	6.9	-0.8	-0.7	-0.9
White Hispanic ^c	6.5	7.9	5.4	-0.6	-1.2	0.0
White Non-Hispanic ^c	8.6	10.7	7.0	-0.6	-0.4	-0.8
Black	5.6	7.1	4.5	-0.5	-0.6	-0.3
Asian/Pacific Islander	5.0	6.2	4.1	-1.7 ^e	-2.2 ^e	-0.9
Amer Ind/Alaska Nat	4.5	5.1	4.0	2.1	1.1	2.4
Hispanic ^c	6.3	7.7	5.2	-0.6	-1.1	0.1

- The APC is the Annual Percent Change over the time interval.
- Statistic not shown. Rate based on less than 25 cases for the time interval. Trend based on less than 10 cases for at least one year within the time interval.
- ^a Rates are age-adjusted to the 2000 US Std Population (19 age groups - Census P25-1130). Trends are based on rates age-adjusted to the 2000 US Std Population (19 age groups - Census P25-1130).
- ^b Incidence data are from the 13 SEER areas (San Francisco, Connecticut, Detroit, Hawaii, Iowa, New Mexico, Seattle, Utah, Atlanta, San Jose-Monterey, Los Angeles, Alaska Native Registry and Rural Georgia).
- ^c Hispanic and Non-Hispanic are not mutually exclusive from Whites, Blacks, Asian Pacific Islanders, and American Indians/Alaska Natives. Incidence data for Hispanics and Non-Hispanics do not include cases from Detroit, Hawaii, Alaska Native Registry and Rural Georgia. For mortality, information is included for all states except Connecticut, Maine, Maryland, Minnesota, New Hampshire, New York, North Dakota, Oklahoma and Vermont.
- ^d Mortality data are analyzed from a public use file provided by the National Center for Health Statistics (NCHS).
- ^e The APC is significantly different from zero (p<.05).

Table XIX-14
NON-HODGKIN LYMPHOMA

AGE-ADJUSTED SEER INCIDENCE RATES AND SEER DEATH RATES^a
By Registry, Race and Sex

	All Races			Whites			Blacks		
	Total	Males	Females	Total	Males	Females	Total	Males	Females
<u>SEER INCIDENCE RATES^b, 1998-2002</u>									
REGISTRY									
13 SEER Areas	19.1	23.2	15.8	20.2	24.4	16.7	14.2	17.6	11.6
11 SEER Areas	19.2	23.3	15.9	20.2	24.4	16.7	14.3	17.6	11.7
9 SEER Areas	19.4	23.6	16.1	20.4	24.6	16.9	14.1	17.3	11.6
San Francisco-Oakland	20.5	25.9	16.1	22.5	28.2	17.6	15.7	20.0	12.2
Connecticut	20.3	24.5	17.0	20.7	25.1	17.2	13.8	16.1	12.2
Metropolitan Detroit	19.8	23.8	16.8	21.2	25.2	18.1	14.3	17.8	11.7
Hawaii	15.7	18.6	13.1	17.9	19.9	16.0	-	-	-
Iowa	19.3	22.5	16.8	19.3	22.5	16.8	-	-	-
New Mexico	15.5	17.8	13.5	15.8	18.1	13.8	-	-	-
Seattle-Puget Sound	21.5	26.2	17.6	22.1	27.1	18.1	13.8	15.6	12.2
Utah	18.7	23.3	14.9	19.0	23.6	15.1	-	-	-
Metropolitan Atlanta	17.2	20.8	14.4	18.7	22.6	15.5	13.0	15.9	10.8
San Jose-Monterey	19.4	22.4	17.0	20.3	23.5	17.7	16.6	20.2	-
Los Angeles	18.3	22.6	14.8	19.4	23.9	15.8	14.8	18.3	12.1
<u>SEER DEATH RATES^c, 1998-2002</u>									
REGISTRY									
13 SEER Areas	7.8	9.9	6.3	8.3	10.5	6.6	5.6	7.0	4.6
11 SEER Areas	7.8	9.9	6.3	8.3	10.5	6.7	5.6	7.1	4.6
9 SEER Areas	8.0	10.2	6.5	8.5	10.7	6.8	5.6	7.2	4.5
San Francisco-Oakland	7.7	10.0	6.1	8.7	11.3	6.7	5.5	6.8	4.7
Connecticut	8.1	10.0	6.8	8.3	10.2	6.9	6.1	8.3	5.1
Metropolitan Detroit	8.4	10.8	6.7	9.1	11.5	7.2	5.8	8.0	4.4
Hawaii	6.6	8.3	5.1	7.1	8.8	5.4	-	-	-
Iowa	8.7	10.5	7.5	8.7	10.5	7.5	-	-	-
New Mexico	6.6	7.9	5.5	6.8	8.2	5.6	-	-	-
Seattle-Puget Sound	8.7	11.4	6.7	9.0	11.7	6.9	6.3	-	-
Utah	8.0	10.6	6.0	8.1	10.8	6.0	-	-	-
Metropolitan Atlanta	7.5	9.7	6.0	8.2	10.6	6.5	5.1	6.4	4.2
San Jose-Monterey	7.1	8.6	6.0	7.5	9.0	6.3	-	-	-
Los Angeles	7.2	9.2	5.7	7.8	9.9	6.2	5.7	6.9	4.9

^a Incidence and death rates are per 100,000 and are age-adjusted to the 2000 US Std Population (19 age groups - Census P25-1130).

^b The SEER 9 areas are San Francisco, Connecticut, Detroit, Hawaii, Iowa, New Mexico, Seattle, Utah, and Atlanta. The SEER 11 areas comprise the SEER 9 areas plus San Jose-Monterey and Los Angeles. The SEER 13 areas comprise the SEER 11 areas plus the Alaska Native Registry and Rural Georgia.

^c NCHS public use data file for the total US with analyses limited to the SEER geographic areas.

- Statistic could not be calculated or populations are inadequate.

Table XIX-15
NON-HODGKIN LYMPHOMA

AVERAGE ANNUAL AGE-ADJUSTED CANCER DEATH^a RATES BY STATE, ALL RACES, 1998-2002

Males and Females

State	Rate	SE	Rank	PD
TOTAL U.S.	8.1	0.02		
High Five States				
South Dakota	9.3	0.47	(01)	14.8
Vermont	9.3	0.55	(02)	14.8
Minnesota	9.1 ^c	0.19	(03)	12.3
Indiana	9.1 ^c	0.17	(04)	12.3
Ohio	9.0 ^c	0.12	(05)	11.1
Low Five States				
Nevada	7.2	0.29	(47)	-11.1
New Mexico	6.6 ^{bc}	0.28	(48)	-18.5
Hawaii	6.6 ^{bc}	0.32	(49)	-18.5
Wyoming	6.4 ^b	0.52	(50)	-21.0
District of Columbia	6.3 ^{bc}	0.47	(51)	-22.2

Males

State	Rate	SE	Rank	PD
TOTAL U.S.	10.2	0.04		
High Five States				
South Dakota	11.9 ^b	0.82	(01)	16.7
Minnesota	11.6 ^c	0.34	(02)	13.7
Indiana	11.6 ^c	0.31	(03)	13.7
Ohio	11.4 ^c	0.22	(04)	11.8
Vermont	11.3	0.95	(05)	10.8
Low Five States				
Georgia	8.8 ^c	0.27	(47)	-13.7
District of Columbia	8.7	0.91	(48)	-14.7
Hawaii	8.3 ^b	0.54	(49)	-18.6
New Mexico	7.9 ^{bc}	0.47	(50)	-22.5
Wyoming	6.4 ^{bc}	0.80	(51)	-37.3

Females

State	Rate	SE	Rank	PD
TOTAL U.S.	6.6	0.03		
High Five States				
Vermont	8.0 ^b	0.67	(01)	21.2
Iowa	7.5	0.28	(02)	13.6
Oregon	7.4	0.27	(03)	12.1
Ohio	7.4 ^c	0.15	(04)	12.1
Missouri	7.3	0.21	(05)	10.6
Low Five States				
Mississippi	5.7	0.27	(47)	-13.6
Nevada	5.7	0.35	(48)	-13.6
New Mexico	5.5 ^b	0.34	(49)	-16.7
Hawaii	5.1 ^{bc}	0.39	(50)	-22.7
District of Columbia	4.8 ^b	0.53	(51)	-27.3

For additional detailed cancer statistics by state, please visit the State Cancer Profiles website. <http://statecancerprofiles.cancer.gov/>

- ^a NCHS public use data file. Rates are per 100,000 and are age-adjusted to the 2000 US Std Population (19 age groups - Census P25-1130).
- ^b Absolute percent difference between state rate and total U.S. rate is 15% or more.
- ^c Difference between state rate and total U.S. rate is statistically significant (p<=.0002).
- SE Standard error of the rate.
- PD Percent difference between state rate and total U.S. rate.

Table XIX-16
NON-HODGKIN LYMPHOMA (Invasive)

Estimated United States Cancer Prevalence Counts^a on January 1, 2002
By Race/Ethnicity, Sex and Years Since Diagnosis

Years Since Diagnosis	0 to <5	5 to <10	10 to <15	15 to <20	20 to <25	0 to <12 ^e	0 to <27 ^e	>=27 ^g	Complete ^h
Race/Sex									
All Races ^b	154,821	85,244	47,766	26,952	14,294	262,289	332,657	14,382	347,039
Males	81,328	44,005	24,757	13,815	7,109	136,827	172,701	7,636	180,337
Females	73,493	41,239	23,009	13,137	7,185	125,462	159,956	6,746	166,702
White ^b	138,315	76,197	43,410	24,625	13,166	234,688	299,055	14,461	313,516
Males	72,757	39,068	22,584	12,599	6,587	122,246	155,210	8,088	163,298
Females	65,558	37,129	20,826	12,026	6,579	112,442	143,845	6,373	150,218
Black ^b	10,554	5,631	2,955	1,554	808	17,628	21,686	1,032	22,718
Males	5,479	3,112	1,453	821	334	9,311	11,262	470	11,732
Females	5,075	2,519	1,502	733	474	8,317	10,424	562	10,986
Asian/Pacific Islander ^c	3,478	1,791	+	+	+	5,722	+	+	+
Males	1,832	897	+	+	+	2,977	+	+	+
Females	1,646	894	+	+	+	2,745	+	+	+
Hispanic ^d	8,241	4,261	+	+	+	13,531	+	+	+
Males	4,400	2,247	+	+	+	7,149	+	+	+
Females	3,841	2,014	+	+	+	6,382	+	+	+

Estimated prevalence percent^a on January 1, 2002, of the SEER 11 population diagnosed in the previous 10 years
By Age at Prevalence, Race/Ethnicity and Sex

Age at Prevalence	Age Specific (Crude)										Age-Adjusted ^f
	All Ages	0-9	10-19	20-29	30-39	40-49	50-59	60-69	70-79	80+	All Ages
Race/Sex											
All Races ^c	0.0749%	0.0022%	0.0084%	0.0140%	0.0293%	0.0626%	0.1243%	0.2312%	0.3411%	0.3502%	0.0800%
Males	0.0795%	0.0030%	0.0112%	0.0169%	0.0342%	0.0750%	0.1439%	0.2624%	0.3842%	0.3897%	0.0918%
Females	0.0705%	0.0013%	0.0055%	0.0109%	0.0244%	0.0503%	0.1057%	0.2035%	0.3086%	0.3289%	0.0696%
White ^c	0.0831%	0.0023%	0.0086%	0.0144%	0.0307%	0.0659%	0.1323%	0.2521%	0.3649%	0.3682%	0.0852%
Males	0.0874%	0.0031%	0.0116%	0.0172%	0.0357%	0.0789%	0.1522%	0.2833%	0.4110%	0.4093%	0.0974%
Females	0.0788%	0.0015%	0.0054%	0.0113%	0.0254%	0.0527%	0.1129%	0.2237%	0.3296%	0.3464%	0.0743%
Black ^c	0.0425%	0.0014%	0.0063%	0.0136%	0.0285%	0.0571%	0.1038%	0.1395%	0.1735%	0.1623%	0.0536%
Males	0.0478%	0.0021%	0.0088%	0.0166%	0.0333%	0.0702%	0.1318%	0.1653%	0.1880%	0.1961%	0.0640%
Females	0.0376%	-	0.0037%	0.0109%	0.0242%	0.0456%	0.0804%	0.1192%	0.1640%	0.1465%	0.0452%
Asian/Pacific Islander ^c	0.0484%	0.0023%	0.0100%	0.0115%	0.0195%	0.0392%	0.0733%	0.1412%	0.2451%	0.2634%	0.0541%
Males	0.0511%	0.0036%	0.0111%	0.0150%	0.0226%	0.0450%	0.0809%	0.1603%	0.2682%	0.2961%	0.0609%
Females	0.0459%	-	0.0088%	0.0080%	0.0165%	0.0340%	0.0667%	0.1254%	0.2280%	0.2410%	0.0483%
Hispanic ^d	0.0327%	0.0020%	0.0067%	0.0088%	0.0212%	0.0457%	0.0848%	0.1699%	0.2637%	0.2537%	0.0589%
Males	0.0336%	0.0030%	0.0090%	0.0102%	0.0252%	0.0516%	0.0960%	0.1825%	0.2939%	0.2198%	0.0637%
Females	0.0317%	0.0009%	0.0043%	0.0071%	0.0167%	0.0396%	0.0746%	0.1595%	0.2423%	0.2724%	0.0540%

^a US 2002 cancer prevalence counts are based on 2002 cancer prevalence proportions from the SEER registries and 1/1/2002 US population estimates based on the average of 2001 and 2002 population estimates from the US Bureau of the Census. Prevalence was calculated using the First Malignant Primary Only for a person.

^{b c d} Statistics based on b) SEER 9 Areas c) SEER 11 Areas and Rural Georgia d) SEER 11 Areas excluding Hawaii and Detroit.

^e Maximum limited-duration prevalence: 27 years for 1975-2002 SEER 9 data; 12 years for 1990-2002 SEER 11 data (used to calculate prevalence for Hispanics and Asian Pacific Islanders).

^f Percentages are age-adjusted to the 2000 US standard population by 5-year age groups.

^{g h} (g) Cases diagnosed more than 27 years ago were estimated using the completeness index method (Capocaccia et. al. 1997, Merrill et. al. 2000). (h) Complete prevalence is obtained by summing 0 to <27 and >=27.

- Statistic not shown. Statistic based on fewer than 5 cases estimated alive in SEER for the time interval.

+ Not available.

SEER Incidence, Delay Adjusted Incidence and US Death Rates+ Non-Hodgkin Lymphoma, by Race and Sex

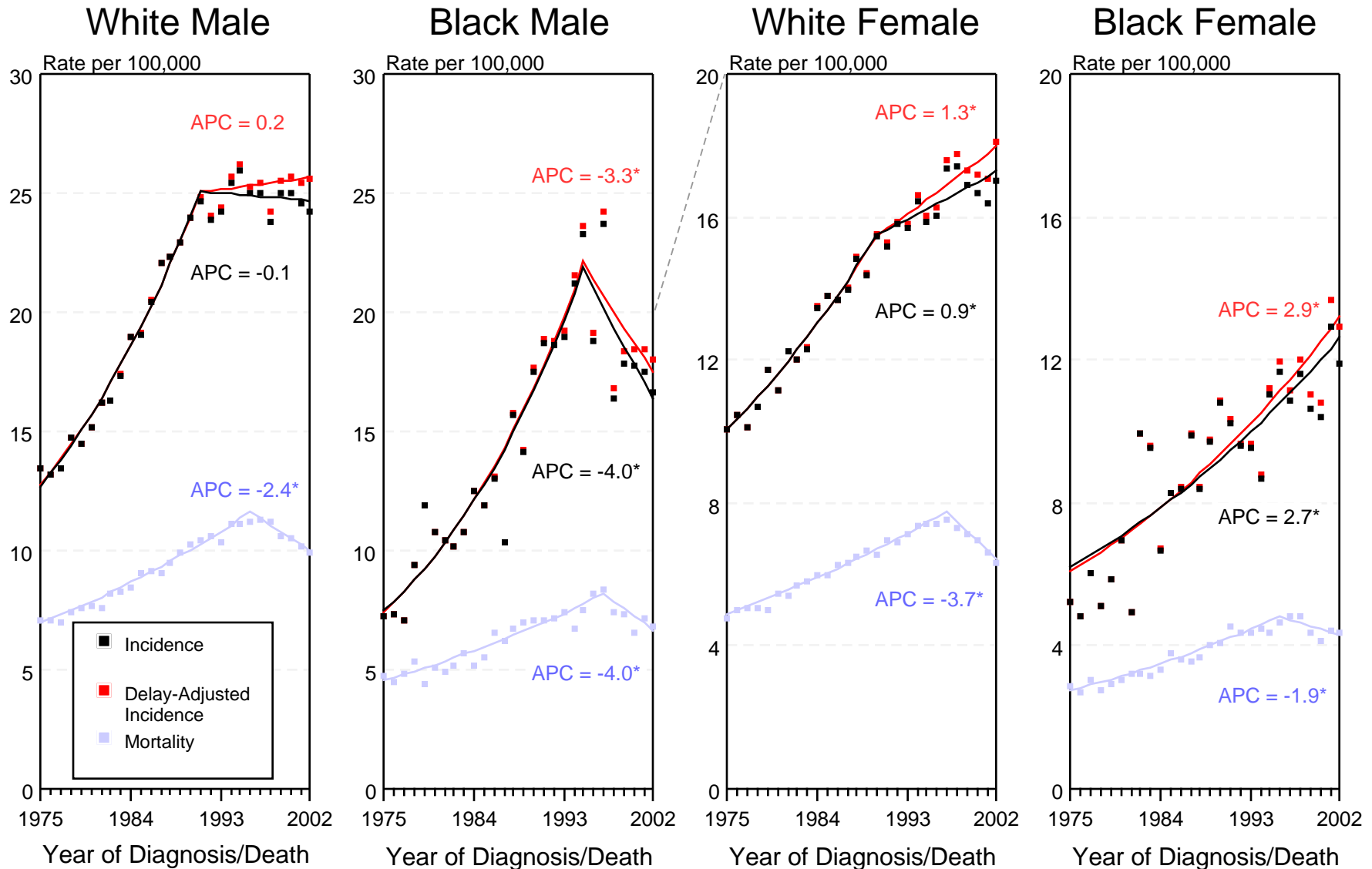


Figure XIX-1

+ Source: SEER 9 areas and NCHS public use data file for the total US. Rates are age-adjusted to the 2000 US Std Population (19 age groups - Census P25-1103). Regression lines and APCs are calculated using the Joinpoint Regression Program Version 3.0, April 2005, National Cancer Institute.

The APC is the Annual Percent Change for the regression line segments. The APC shown on the graph is for the most recent trend.

* The APC is significantly different from zero ($p < 0.05$).

SEER Incidence and US Death Rates + Non-Hodgkin Lymphoma, Both Sexes

Joinpoint Analyses for 1975-2002 for Whites and Blacks

Rates for 1992-2002 for Asian/Pacific Islander, American Indian/Alaska Native and Hispanic

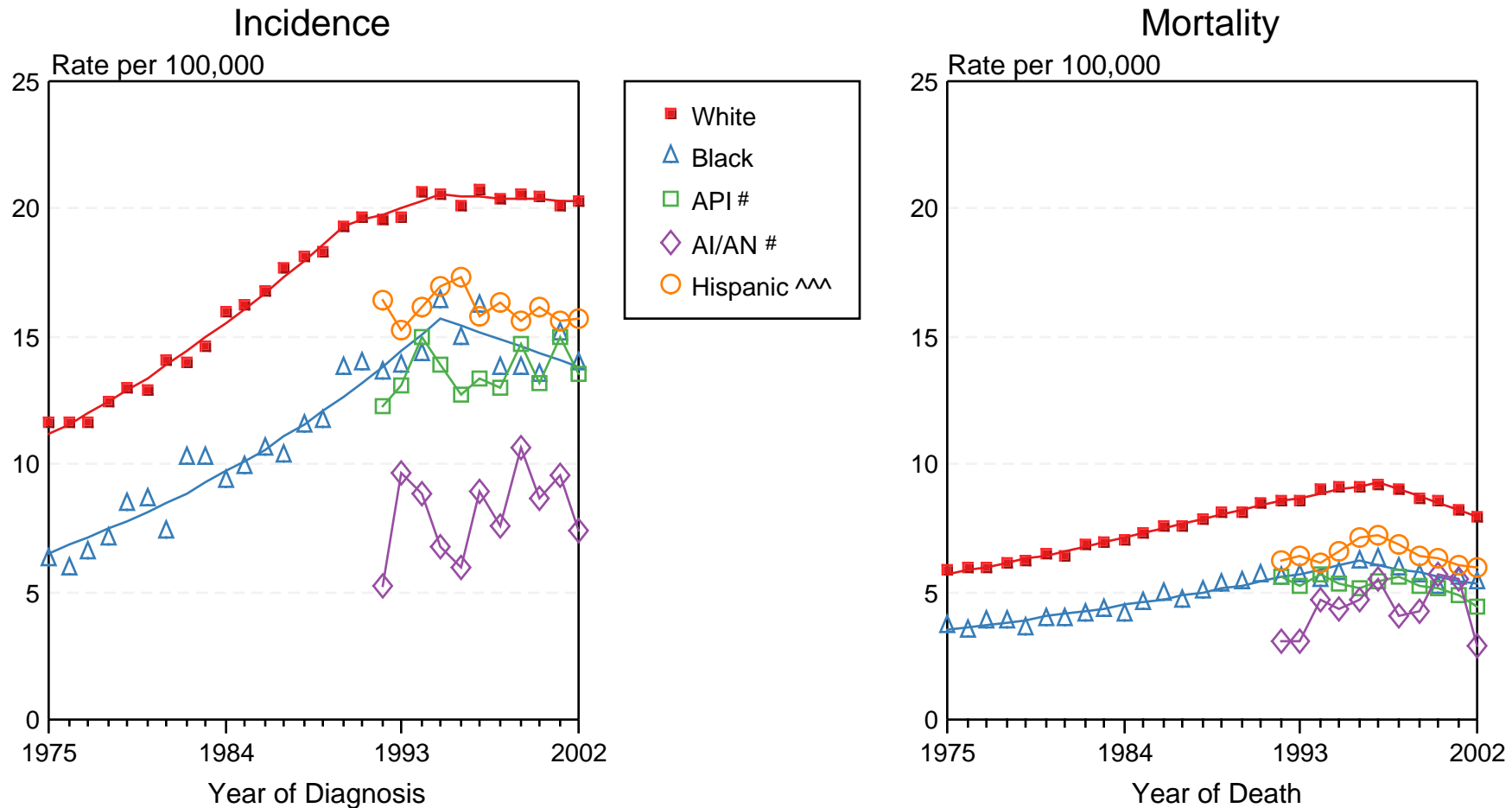


Figure XIX-2

+ Source: Incidence data for whites and blacks is from the SEER 9 areas (San Francisco, Connecticut, Detroit, Hawaii, Iowa, New Mexico, Seattle, Utah, Atlanta). Incidence data for Asian/Pacific Islanders, American Indian/Alaska Natives and Hispanics is from the SEER 13 Areas (SEER 9 Areas, San Jose-Monterey, Los Angeles, Alaska Native Registry and Rural Georgia). Mortality data is from NCHS public use data file for the total US. Rates are age-adjusted to the 2000 US Std Population (19 age groups - Census P25-1103). Regression lines for whites and blacks are calculated using the Joinpoint Regression Program Version 3.0, April 2005, National Cancer Institute.

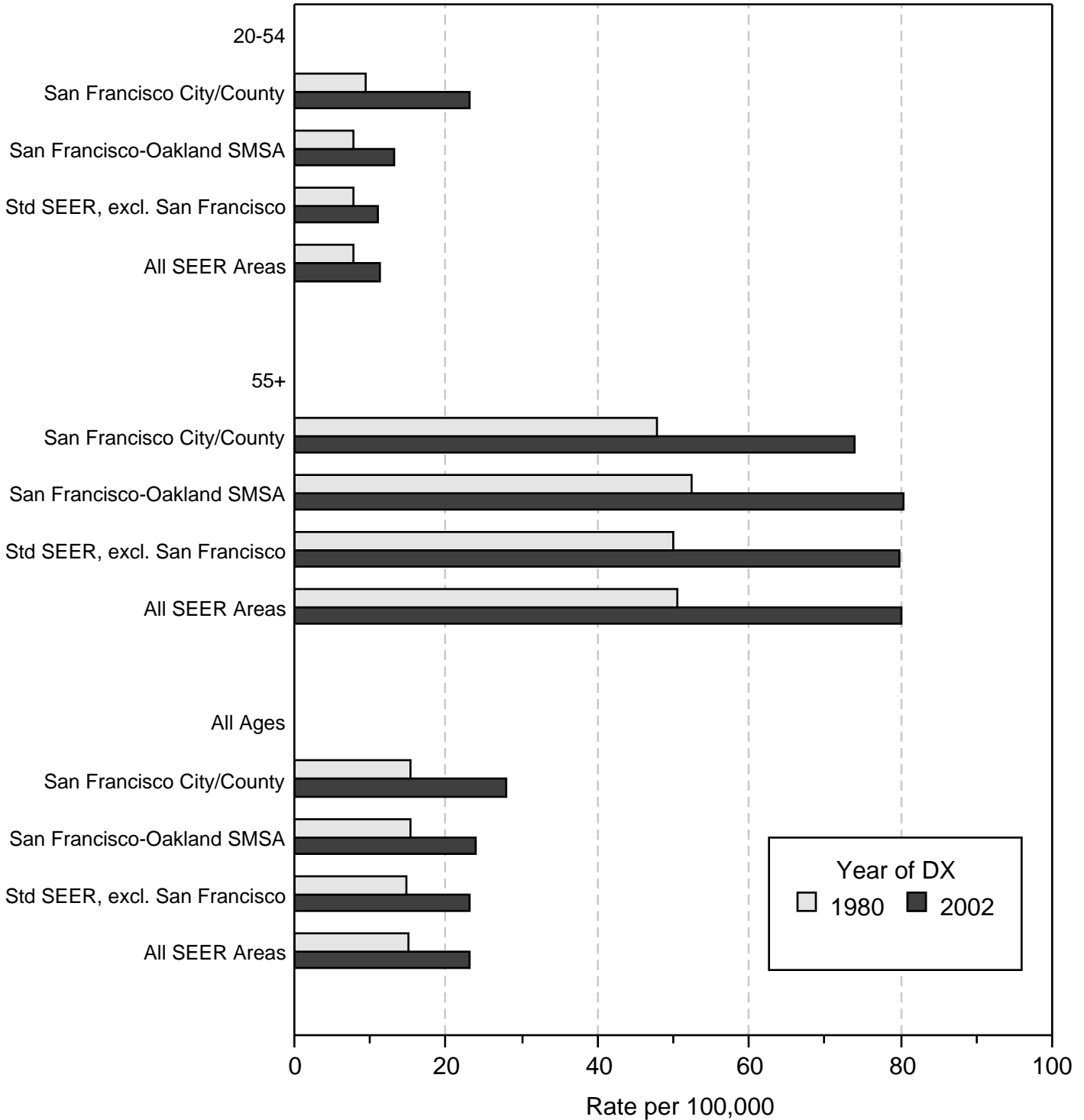
API = Asian/Pacific Islander. AI/AN = American Indian/Alaska Native.

^^ Hispanic is not mutually exclusive from Whites, Blacks, Asian/Pacific Islanders, and American Indians/Alaska Natives. Incidence data for Hispanics excludes cases from Detroit, Hawaii, Alaska Native Registry and Rural Georgia. Mortality data for Hispanics excludes cases from Connecticut, Maine, Maryland, Minnesota, Oklahoma, New Hampshire, New York, North Dakota, and Vermont.

Figure XIX-3

Non-Hodgkin Lymphoma Incidence Rates, 1980 vs 2002 Males

Age/Area



Source: SEER 9 areas. Rates are age-adjusted to the 2000 US Std Population (19 age groups - Census P25-1103).

Non-Hodgkin Lymphoma SEER Incidence by Age 1975-1977 vs 2000-2002 All Races, Males

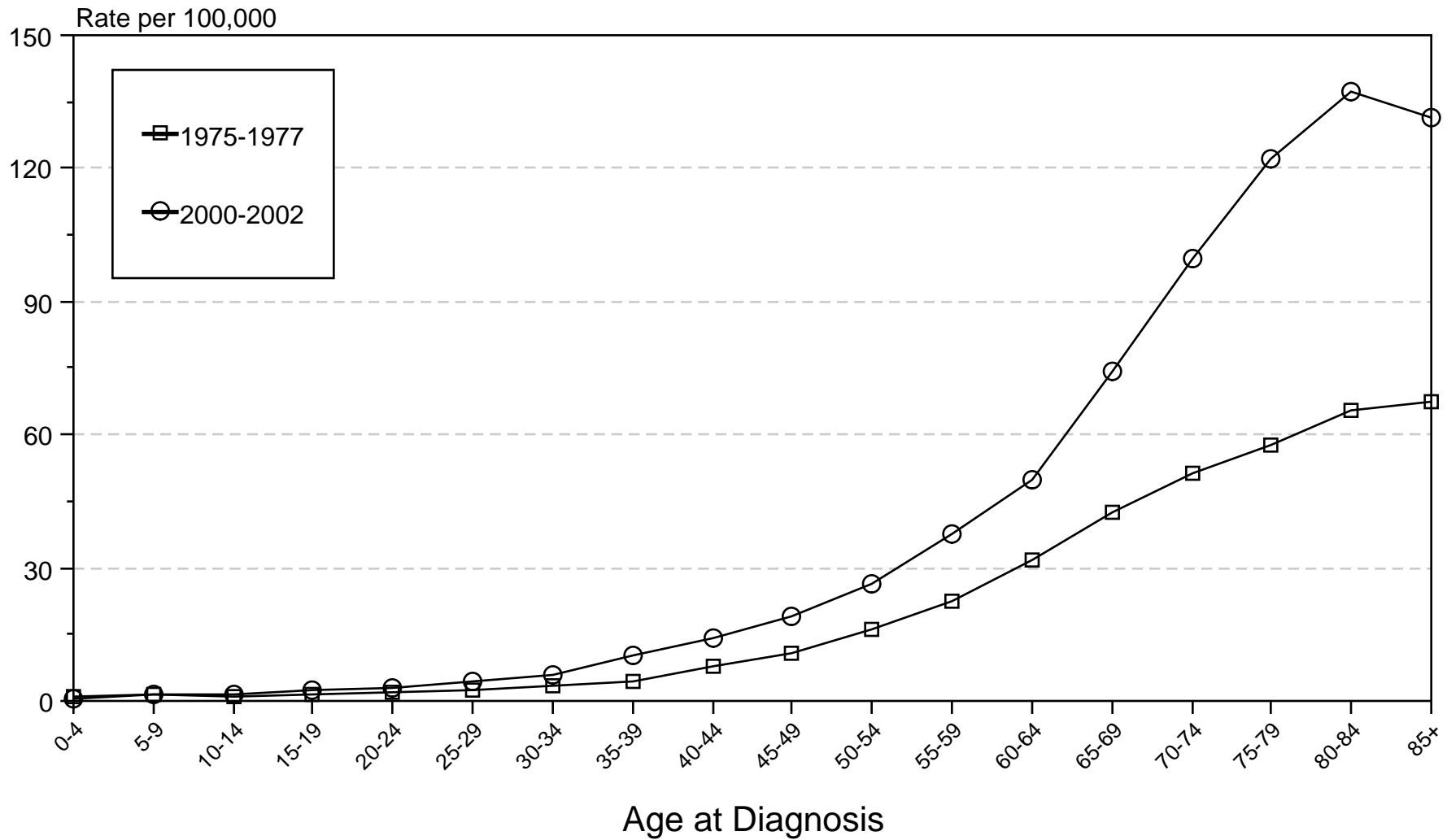


Figure XIX-4

Source: SEER 9 areas. Rates are age-adjusted to the 2000 US Std Population (19 age groups - Census P25-1103).