

Table XV-1
LUNG AND BRONCHUS CANCER (Invasive)

TRENDS IN SEER INCIDENCE^a AND U.S. MORTALITY^b USING THE JOINPOINT REGRESSION PROGRAM, 1975-2002
WITH UP TO THREE JOINPOINTS BY RACE AND SEX

		Joinpoint Segment 1		Joinpoint Segment 2		Joinpoint Segment 3		Joinpoint Segment 4	
		Year	APC	Year	APC	Year	APC	Year	APC
<u>SEER Cancer Incidence^a</u>									
All Races	Male and Female	1975-1982	2.5 ^c	1982-1991	0.9 ^c	1991-1998	-0.6 ^c	1998-2002	-1.7 ^c
All Races	Male	1975-1981	1.7 ^c	1981-1991	-0.3	1991-2002	-2.0 ^c		
All Races	Female	1975-1982	5.5 ^c	1982-1990	3.5 ^c	1990-1998	1.0 ^c	1998-2002	-1.1
White	Male and Female	1975-1981	2.5 ^c	1981-1988	1.5 ^c	1988-1998	-0.1	1998-2002	-1.8 ^c
White	Male	1975-1981	1.5 ^c	1981-1990	-0.2	1990-2002	-1.9 ^c		
White	Female	1975-1982	5.6 ^c	1982-1988	4.2 ^c	1988-1998	1.5 ^c	1998-2002	-1.5 ^c
Black	Male and Female	1975-1984	3.5 ^c	1984-2002	-0.7 ^c				
Black	Male	1975-1984	3.2 ^c	1984-2002	-1.7 ^c				
Black	Female	1975-1989	4.4 ^c	1989-2002	0.8 ^c				
<u>SEER Delay-Adjusted Incidence^a</u>									
All Races	Male and Female	1975-1982	2.5 ^c	1982-1991	1.0 ^c	1991-2002	-0.7 ^c		
All Races	Male	1975-1982	1.5 ^c	1982-1991	-0.4	1991-2002	-1.8 ^c		
All Races	Female	1975-1982	5.5 ^c	1982-1990	3.5 ^c	1990-1998	1.0 ^c	1998-2002	-0.5
White	Male and Female	1975-1982	2.5 ^c	1982-1991	1.1 ^c	1991-2002	-0.6 ^c		
White	Male	1975-1981	1.5 ^c	1981-1990	-0.2	1990-2002	-1.7 ^c		
White	Female	1975-1982	5.6 ^c	1982-1988	4.1 ^c	1988-1997	1.7 ^c	1997-2002	-0.4
Black	Male and Female	1975-1984	3.5 ^c	1984-2002	-0.6 ^c				
Black	Male	1975-1984	3.1 ^c	1984-2002	-1.6 ^c				
Black	Female	1975-1989	4.4 ^c	1989-2002	0.9 ^c				
<u>U.S. Cancer Mortality^b</u>									
All Races	Male and Female	1975-1980	3.0 ^c	1980-1990	1.8 ^c	1990-1994	-0.1	1994-2002	-0.9 ^c
All Races	Male	1975-1978	2.4 ^c	1978-1984	1.2 ^c	1984-1991	0.3 ^c	1991-2002	-1.9 ^c
All Races	Female	1975-1982	6.0 ^c	1982-1990	4.2 ^c	1990-1995	1.7 ^c	1995-2002	0.3 ^c
White	Male and Female	1975-1982	2.6 ^c	1982-1991	1.7 ^c	1991-2002	-0.6 ^c		
White	Male	1975-1980	1.9 ^c	1980-1987	0.7 ^c	1987-1991	0.1	1991-2002	-1.7 ^c
White	Female	1975-1983	5.8 ^c	1983-1990	4.1 ^c	1990-1994	2.1 ^c	1994-2002	0.5 ^c
Black	Male and Female	1975-1981	3.5 ^c	1981-1990	1.9 ^c	1990-1995	-0.7 ^c	1995-2002	-1.7 ^c
Black	Male	1975-1981	3.1 ^c	1981-1989	1.6 ^c	1989-1993	-0.6	1993-2002	-2.6 ^c
Black	Female	1975-1981	6.7 ^c	1981-1991	3.9 ^c	1991-1998	1.0 ^c	1998-2002	-0.5

Joinpoint Regression Program Version 3.0, April 2005, National Cancer Institute. (<http://srab.cancer.gov/joinpoint/>).

The APC is the Annual Percent Change based on rates age-adjusted to the 2000 US Std Population (19 age groups - Census P25-1130).

^a Trends are from the SEER 9 areas.

^b Trends are from the NCHS public use data file for the total US.

^c The APC is significantly different from zero (p<.05).

Table XV-2
 SMALL CELL LUNG AND BRONCHUS CANCER (Invasive) AND NON-SMALL CELL LUNG AND BRONCHUS CANCER (Invasive)

TRENDS IN SEER INCIDENCE^a USING THE JOINTPOINT REGRESSION PROGRAM, 1975-2002
 WITH UP TO THREE JOINTPOINTS BY RACE AND SEX

		Jointpoint Segment 1		Jointpoint Segment 2		Jointpoint Segment 3		Jointpoint Segment 4	
		Year	APC	Year	APC	Year	APC	Year	APC
<u>SEER Cancer Incidence for Small Cell Lung and Bronchus^a</u>									
All Races	Male and Female	1975-1982	6.1 ^b	1982-1989	1.3	1989-2002	-2.4 ^b		
All Races	Male	1975-1980	6.4 ^b	1980-1988	0.5	1988-2002	-3.4 ^b		
All Races	Female	1975-1982	9.6 ^b	1982-1991	3.0 ^b	1991-2002	-1.8 ^b		
White	Male and Female	1975-1982	6.3 ^b	1982-1989	1.4 ^b	1989-2002	-2.2 ^b		
White	Male	1975-1980	6.3 ^b	1980-1988	0.6	1988-2002	-3.3 ^b		
White	Female	1975-1982	10.0 ^b	1982-1990	3.5 ^b	1990-2002	-1.3 ^b		
Black	Male and Female	1975-1986	4.7 ^b	1986-2002	-2.3 ^b				
Black	Male	1975-1985	4.8 ^b	1985-2002	-3.2 ^b				
Black	Female	1975-1991	4.6 ^b	1991-2002	-2.3				
<u>SEER Cancer Incidence for Non-Small Cell Lung and Bronchus^a</u>									
All Races	Male and Female	1975-1988	1.5 ^b	1988-1998	0.0	1998-2002	-1.7 ^b		
All Races	Male	1975-1981	1.1 ^b	1981-1992	-0.3	1992-2002	-1.8 ^b		
All Races	Female	1975-1988	4.3 ^b	1988-1998	1.7 ^b	1998-2002	-0.9		
White	Male and Female	1975-1988	1.6 ^b	1988-1998	0.1	1998-2002	-1.6 ^b		
White	Male	1975-1989	0.2	1989-2002	-1.6 ^b				
White	Female	1975-1988	4.4 ^b	1988-1998	1.9 ^b	1998-2002	-1.1 ^b		
Black	Male and Female	1975-1984	3.2 ^b	1984-2002	-0.6 ^b				
Black	Male	1975-1984	2.9 ^b	1984-2002	-1.6 ^b				
Black	Female	1975-1988	4.5 ^b	1988-2002	1.2 ^b				

Jointpoint Regression Program Version 3.0, April 2005, National Cancer Institute. (<http://srab.cancer.gov/jointpoint/>).

The APC is the Annual Percent Change based on rates age-adjusted to the 2000 US Std Population (19 age groups - Census P25-1130).

^a Trends are from the SEER 9 areas.

^b The APC is significantly different from zero (p<.05).

Table XV-3
LUNG AND BRONCHUS CANCER (Invasive)

SEER INCIDENCE RATES, AGE-ADJUSTED AND AGE-SPECIFIC RATES^a, BY RACE AND SEX

	All Races			Whites			Blacks		
	Total	Males	Females	Total	Males	Females	Total	Males	Females
<u>AGE-ADJUSTED RATES</u>									
<u>YEAR OF DIAGNOSIS:</u>									
1975	52.2	89.5	24.5	52.0	89.1	24.9	64.6	114.9	24.7
1976	55.4	93.8	27.3	54.6	92.7	27.3	72.3	131.0	28.6
1977	56.7	95.5	28.3	55.9	94.7	28.1	73.5	124.7	33.9
1978	57.9	96.7	29.7	57.3	95.9	29.9	74.5	130.7	31.6
1979	58.6	95.8	31.5	58.0	95.2	31.6	74.4	127.4	34.0
1980	60.6	100.0	32.2	59.4	97.7	32.3	86.6	151.5	38.3
1981	62.0	99.4	35.1	61.6	98.5	35.5	82.2	143.0	37.2
1982	63.3	100.7	36.7	63.0	99.6	37.7	80.4	141.1	35.7
1983	63.4	99.5	37.8	63.0	97.6	39.0	86.6	151.3	39.5
1984	65.5	102.0	39.5	64.3	99.9	39.6	93.1	159.2	44.8
1985	64.6	98.6	40.2	64.0	96.9	40.8	89.6	149.6	46.1
1986	65.8	99.1	42.3	65.2	97.4	42.9	92.9	156.1	48.7
1987	67.9	101.6	44.2	68.1	100.7	45.5	84.8	143.7	43.2
1988	68.0	98.7	46.3	68.2	97.9	47.7	88.2	145.1	48.0
1989	67.6	97.9	46.1	67.6	97.0	47.3	89.0	142.6	51.4
1990	68.1	97.0	47.8	68.2	96.2	48.9	86.7	137.1	52.1
1991	69.2	97.3	49.6	69.0	96.0	50.7	93.1	145.0	56.9
1992	69.5	97.2	49.9	68.9	94.8	51.1	94.0	149.3	55.7
1993	67.7	93.9	49.2	67.8	92.5	50.7	86.1	135.3	52.2
1994	67.2	91.0	50.6	67.3	90.2	51.7	87.0	131.3	56.2
1995	66.8	89.8	50.4	67.1	87.9	52.4	85.8	138.7	50.2
1996	66.4	87.9	51.2	66.8	86.6	53.0	83.7	127.3	54.8
1997	66.6	86.3	52.5	67.2	84.9	54.9	82.1	129.3	50.4
1998	67.4	87.9	52.8	68.0	86.6	54.9	86.8	130.2	57.5
1999	65.6	84.4	52.3	66.1	83.1	54.2	83.8	121.4	58.3
2000	63.7	81.4	51.0	64.3	80.2	53.0	79.3	113.3	56.4
2001	62.7	79.5	50.4	63.7	79.3	52.4	78.5	112.2	55.8
2002	62.1	77.8	50.8	62.7	77.1	52.4	80.1	110.4	59.9
<u>AGE-ADJUSTED RATES, 1998-2002</u>									
<u>AGE AT DIAGNOSIS:</u>									
All ages	64.2	82.1	51.4	64.9	81.1	53.4	81.6	117.2	57.6
Under 65	22.8	26.0	19.7	22.4	24.7	20.2	34.8	46.5	25.1
65 and over	351.0	469.5	270.9	358.6	471.2	282.6	404.5	605.6	281.8
All ages(IARC world std) ^b	41.7	51.5	34.0	42.0	50.6	35.3	55.0	77.0	39.0
<u>AGE-SPECIFIC RATES, 1998-2002</u>									
<u>AGE AT DIAGNOSIS:</u>									
<1	-	-	-	-	-	-	-	-	-
1-4	-	-	-	-	-	-	-	-	-
5-9	-	-	-	-	-	-	-	-	-
10-14	-	-	-	-	-	-	-	-	-
15-19	-	-	-	-	-	-	-	-	-
20-24	0.3	-	-	-	-	-	-	-	-
25-29	0.5	-	0.6	0.5	-	-	-	-	-
30-34	1.3	1.1	1.4	1.2	1.0	1.3	-	-	-
35-39	4.1	3.7	4.4	3.9	3.5	4.4	6.0	6.1	6.0
40-44	11.8	12.0	11.6	11.0	10.9	11.2	21.1	23.7	18.8
45-49	25.7	28.6	22.8	24.1	26.0	22.3	45.2	58.0	34.2
50-54	54.3	61.0	47.8	52.4	56.1	48.7	92.4	125.5	64.4
55-59	113.6	127.8	100.0	111.0	120.1	102.0	184.2	241.5	135.8
60-64	198.0	238.6	160.7	201.0	234.0	170.0	260.4	368.9	173.0
65-69	293.3	356.4	239.3	300.8	357.2	251.0	368.4	502.1	268.6
70-74	383.1	490.3	298.6	396.2	494.9	316.6	442.7	640.9	308.2
75-79	409.9	547.7	312.6	418.3	546.8	327.4	477.6	731.9	319.4
80-84	383.7	544.9	285.3	388.7	548.1	291.9	410.1	640.3	288.2
85+	272.3	453.9	194.5	270.8	454.5	194.3	272.4	502.6	184.3

^a SEER 9 areas. Rates are per 100,000 and are age-adjusted to the 2000 US Std Population (19 age groups - Census P25-1130), unless noted.

^b SEER 9 areas. Rates are per 100,000 and are age-adjusted to the IARC world standard population.

- Statistic not shown. Rate based on less than 25 cases for the time interval.

Table XV-4
SMALL CELL LUNG AND BRONCHUS CANCER (Invasive)

SEER INCIDENCE RATES, AGE-ADJUSTED AND AGE-SPECIFIC RATES^a, BY RACE AND SEX

	All Races			Whites			Blacks		
	Total	Males	Females	Total	Males	Females	Total	Males	Females
<u>AGE-ADJUSTED RATES</u>									
YEAR OF DIAGNOSIS:									
1975	6.6	10.3	3.8	6.9	10.7	4.0	5.9	8.9	3.5
1976	7.1	11.4	3.8	7.1	11.5	3.9	8.2	12.8	4.8
1977	7.7	12.4	4.2	7.8	12.8	4.2	8.1	11.0	5.8
1978	8.6	13.4	5.0	8.9	13.7	5.3	7.8	13.9	-
1979	8.7	13.1	5.3	9.0	13.6	5.6	7.6	11.8	4.5
1980	9.1	14.2	5.2	9.3	14.4	5.5	10.0	17.5	4.4
1981	9.7	14.5	6.1	10.0	14.8	6.5	9.2	15.9	4.2
1982	10.4	14.9	7.1	10.7	15.3	7.6	9.6	15.9	4.9
1983	10.4	14.9	7.1	10.7	15.0	7.6	9.1	15.1	4.9
1984	10.7	15.2	7.4	11.0	15.6	7.8	10.4	15.0	6.9
1985	10.4	15.0	7.1	10.8	15.3	7.5	11.1	17.8	6.3
1986	11.2	15.5	8.0	11.5	16.0	8.3	12.3	17.7	8.4
1987	10.6	14.1	8.2	11.2	14.6	8.8	9.5	14.5	6.0
1988	11.4	15.3	8.5	11.9	15.6	9.2	10.5	17.9	5.3
1989	11.2	14.8	8.7	11.7	15.2	9.2	12.1	17.7	8.4
1990	10.7	13.8	8.4	11.3	14.5	9.1	9.4	13.7	6.2
1991	11.3	14.0	9.4	11.7	14.3	9.9	12.4	16.0	10.0
1992	10.5	13.4	8.4	11.0	13.8	9.0	10.2	13.4	8.0
1993	10.0	12.3	8.4	10.5	12.7	9.0	9.4	13.2	6.8
1994	9.8	11.7	8.4	10.2	11.9	9.1	9.9	13.6	7.4
1995	9.8	12.2	8.1	10.4	12.6	8.8	9.4	13.7	6.6
1996	9.7	12.0	7.9	10.3	12.4	8.6	8.6	11.7	6.7
1997	9.5	10.9	8.6	10.1	11.1	9.5	7.8	10.7	6.1
1998	9.3	10.9	8.2	9.9	11.3	8.9	9.4	12.1	7.4
1999	8.8	10.0	7.9	9.3	10.2	8.7	8.1	10.9	6.0
2000	8.7	10.3	7.5	9.2	10.7	8.1	9.4	11.5	7.9
2001	8.3	9.7	7.3	8.8	10.1	7.9	8.4	10.8	6.7
2002	8.1	9.2	7.3	8.8	9.6	8.2	7.2	10.0	5.6
<u>AGE-ADJUSTED RATES, 1998-2002</u>									
AGE AT DIAGNOSIS:									
All ages	8.6	10.0	7.6	9.2	10.4	8.3	8.5	11.1	6.7
Under 65	3.4	3.6	3.2	3.6	3.7	3.5	3.6	4.6	2.8
65 and over	44.6	54.0	38.3	47.5	56.4	41.6	42.1	55.6	33.7
All ages(IARC world std) ^b	5.9	6.6	5.4	6.3	6.9	5.9	5.9	7.6	4.6
<u>AGE-SPECIFIC RATES, 1998-2002</u>									
AGE AT DIAGNOSIS:									
<1	-	-	-	-	-	-	-	-	-
1-4	-	-	-	-	-	-	-	-	-
5-9	-	-	-	-	-	-	-	-	-
10-14	-	-	-	-	-	-	-	-	-
15-19	-	-	-	-	-	-	-	-	-
20-24	-	-	-	-	-	-	-	-	-
25-29	-	-	-	-	-	-	-	-	-
30-34	-	-	-	-	-	-	-	-	-
35-39	0.4	-	0.5	0.5	-	-	-	-	-
40-44	1.4	1.3	1.6	1.6	1.4	1.8	-	-	-
45-49	3.3	3.5	3.2	3.6	3.7	3.5	3.2	-	-
50-54	8.0	8.6	7.5	8.5	8.6	8.4	9.8	14.2	6.0
55-59	18.0	19.0	17.0	19.1	19.6	18.6	19.8	24.3	16.1
60-64	30.8	33.5	28.2	33.0	34.7	31.3	31.6	40.6	24.3
65-69	45.4	49.4	42.0	49.3	52.5	46.5	42.2	52.0	34.8
70-74	53.1	61.8	46.3	57.0	64.4	51.0	49.7	65.7	38.7
75-79	53.0	65.2	44.4	56.2	68.3	47.7	50.2	65.5	40.7
80-84	38.5	52.6	30.0	40.0	53.9	31.5	33.9	-	-
85+	17.7	30.3	12.3	17.7	30.6	12.3	21.9	-	-

^a SEER 9 areas. Rates are per 100,000 and are age-adjusted to the 2000 US Std Population (19 age groups - Census P25-1130), unless noted.

^b SEER 9 areas. Rates are per 100,000 and are age-adjusted to the IARC world standard population.

- Statistic not shown. Rate based on less than 25 cases for the time interval.

Table XV-5
NON-SMALL CELL LUNG AND BRONCHUS CANCER (Invasive)

SEER INCIDENCE RATES, AGE-ADJUSTED AND AGE-SPECIFIC RATES^a, BY RACE AND SEX

	All Races			Whites			Blacks		
	Total	Males	Females	Total	Males	Females	Total	Males	Females
<u>AGE-ADJUSTED RATES</u>									
<u>YEAR OF DIAGNOSIS:</u>									
1975	45.6	79.2	20.8	45.1	78.4	20.9	58.7	106.0	21.2
1976	48.4	82.4	23.5	47.5	81.2	23.4	64.1	118.2	23.9
1977	49.0	83.1	24.1	48.0	81.9	23.9	65.4	113.6	28.1
1978	49.2	83.3	24.6	48.4	82.2	24.6	66.7	116.8	28.5
1979	49.9	82.7	26.2	49.0	81.5	26.0	66.8	115.6	29.5
1980	51.5	85.8	27.0	50.1	83.3	26.8	76.7	133.9	33.9
1981	52.3	84.9	29.0	51.5	83.6	29.0	73.0	127.1	33.0
1982	52.9	85.8	29.6	52.3	84.4	30.2	70.7	125.1	30.8
1983	53.1	84.6	30.8	52.3	82.6	31.4	77.5	136.3	34.6
1984	54.8	86.9	32.1	53.3	84.3	31.9	82.6	144.2	38.0
1985	54.2	83.8	33.1	53.2	81.7	33.4	78.6	132.1	39.9
1986	54.6	83.6	34.3	53.7	81.5	34.7	80.7	138.4	40.4
1987	57.3	87.5	36.0	57.0	86.2	36.7	75.4	129.5	37.2
1988	56.8	83.6	37.8	56.5	82.4	38.6	77.9	127.6	42.7
1989	56.5	83.3	37.5	56.0	82.0	38.1	77.1	125.3	43.1
1990	57.6	83.4	39.4	57.1	82.0	39.9	77.5	123.9	45.9
1991	58.1	83.6	40.3	57.5	81.9	40.8	80.9	129.3	46.9
1992	59.1	84.1	41.4	58.1	81.3	42.1	84.0	136.3	47.7
1993	57.8	81.8	40.8	57.4	80.0	41.8	76.9	122.5	45.3
1994	57.5	79.5	42.1	57.2	78.4	42.6	77.2	118.2	48.7
1995	57.1	77.8	42.3	56.8	75.5	43.7	76.9	126.1	43.6
1996	56.8	76.0	43.2	56.6	74.3	44.4	75.2	115.8	48.2
1997	57.1	75.6	43.9	57.2	73.9	45.4	74.4	118.9	44.3
1998	58.2	77.2	44.7	58.1	75.4	46.1	77.6	118.4	50.1
1999	56.9	74.6	44.4	56.9	73.0	45.5	76.0	111.0	52.3
2000	55.1	71.2	43.5	55.1	69.5	44.9	69.9	101.9	48.6
2001	54.5	69.9	43.2	55.0	69.3	44.5	70.1	101.4	49.2
2002	54.1	68.8	43.5	54.0	67.6	44.2	73.0	100.6	54.3
<u>AGE-ADJUSTED RATES, 1998-2002</u>									
<u>AGE AT DIAGNOSIS:</u>									
All ages	55.7	72.2	43.8	55.8	70.9	45.0	73.2	106.4	50.9
Under 65	19.4	22.5	16.5	18.8	21.0	16.7	31.4	42.2	22.4
65 and over	306.7	416.2	232.6	311.4	415.6	241.2	362.5	550.3	248.2
All ages(IARC world std) ^b	35.8	44.9	28.7	35.7	43.8	29.5	49.2	69.7	34.4
<u>AGE-SPECIFIC RATES, 1998-2002</u>									
<u>AGE AT DIAGNOSIS:</u>									
<1	-	-	-	-	-	-	-	-	-
1-4	-	-	-	-	-	-	-	-	-
5-9	-	-	-	-	-	-	-	-	-
10-14	-	-	-	-	-	-	-	-	-
15-19	-	-	-	-	-	-	-	-	-
20-24	0.3	-	-	-	-	-	-	-	-
25-29	0.5	-	0.6	0.5	-	-	-	-	-
30-34	1.2	1.0	1.4	1.1	0.9	1.3	-	-	-
35-39	3.7	3.5	4.0	3.5	3.1	3.9	5.9	6.3	5.6
40-44	10.4	10.7	10.0	9.4	9.5	9.4	20.2	23.2	17.6
45-49	22.4	25.2	19.7	20.6	22.3	18.9	42.3	55.0	31.4
50-54	46.3	52.5	40.3	43.9	47.5	40.3	83.0	112.0	58.4
55-59	95.6	108.8	83.0	91.9	100.6	83.4	164.3	217.3	119.7
60-64	167.3	205.3	132.5	168.2	199.6	138.7	228.8	328.3	148.7
65-69	248.1	307.3	197.2	251.7	305.1	204.6	326.2	450.1	233.8
70-74	330.2	429.1	252.2	339.5	431.2	265.6	393.1	575.2	269.5
75-79	357.2	483.4	268.2	362.4	479.3	279.8	427.8	667.5	278.7
80-84	345.5	493.2	255.5	349.2	495.2	260.6	376.2	591.4	262.3
85+	255.1	424.8	182.4	253.7	425.3	182.2	250.5	469.1	166.8

^a SEER 9 areas. Rates are per 100,000 and are age-adjusted to the 2000 US Std Population (19 age groups - Census P25-1130), unless noted.

^b SEER 9 areas. Rates are per 100,000 and are age-adjusted to the IARC world standard population.

- Statistic not shown. Rate based on less than 25 cases for the time interval.

Table XV-6
LUNG AND BRONCHUS CANCER (Invasive)

U.S. DEATH RATES, AGE-ADJUSTED AND AGE-SPECIFIC RATES^a, BY RACE AND SEX

	All Races			Whites			Blacks		
	Total	Males	Females	Total	Males	Females	Total	Males	Females
<u>AGE-ADJUSTED RATES</u>									
YEAR OF DEATH:									
1975	42.6	76.4	17.6	42.1	75.5	17.7	49.3	91.0	17.3
1976	44.2	78.5	19.0	43.7	77.6	19.1	51.1	94.0	18.5
1977	45.5	80.4	20.0	44.8	79.1	20.1	54.6	100.8	19.9
1978	46.9	82.1	21.4	46.3	80.8	21.6	55.3	101.6	20.7
1979	47.7	82.9	22.3	47.1	81.6	22.4	56.4	102.9	22.2
1980	49.4	84.7	24.1	48.8	83.3	24.2	59.2	106.7	24.6
1981	50.0	85.2	24.9	49.3	83.5	25.1	60.6	109.7	25.1
1982	51.4	86.8	26.5	50.8	85.2	26.7	62.3	112.5	26.3
1983	52.4	87.0	28.1	51.7	85.4	28.3	63.7	112.8	28.7
1984	53.4	88.2	28.9	52.6	86.2	29.3	65.1	118.0	28.0
1985	54.3	88.5	30.4	53.7	86.7	30.8	65.8	117.5	29.6
1986	55.0	89.0	31.4	54.4	87.0	31.8	67.0	119.2	31.0
1987	56.2	90.0	32.7	55.6	88.1	33.0	68.6	121.8	32.5
1988	57.0	89.9	34.1	56.4	87.9	34.6	69.2	122.2	33.5
1989	57.9	89.8	35.8	57.2	87.6	36.3	71.0	124.7	34.9
1990	58.9	90.6	36.8	58.2	88.4	37.3	72.1	125.2	36.5
1991	59.0	89.9	37.6	58.4	87.8	38.1	71.6	123.6	37.2
1992	58.9	88.0	38.7	58.3	86.0	39.2	71.4	121.1	38.6
1993	59.1	87.6	39.3	58.7	85.5	40.0	71.1	122.0	37.7
1994	58.5	85.7	39.6	58.2	83.8	40.3	70.2	118.6	38.6
1995	58.4	84.4	40.3	58.1	82.6	41.0	69.3	116.1	38.8
1996	57.9	82.8	40.4	57.7	81.2	41.2	68.3	113.2	39.1
1997	57.5	81.3	40.8	57.3	79.8	41.5	67.9	110.2	40.5
1998	57.1	79.9	41.0	56.9	78.5	41.7	66.9	107.4	40.7
1999	55.4	77.0	40.1	55.3	75.7	40.9	65.0	103.6	40.0
2000	55.8	76.4	41.1	56.0	75.4	42.1	63.8	101.0	39.7
2001	55.2	75.1	41.0	55.5	74.2	42.0	62.6	99.4	38.8
2002	54.9	73.5	41.5	55.2	72.7	42.6	62.2	95.7	40.2
<u>AGE-ADJUSTED RATES, 1998-2002</u>									
AGE AT DEATH:									
All ages	55.7	76.3	40.9	55.8	75.2	41.8	64.1	101.3	39.9
Under 65	18.1	22.5	14.1	17.8	21.6	14.3	25.1	36.2	15.9
65 and over	315.2	448.2	226.6	318.1	446.1	232.4	333.4	550.7	205.3
All ages(IARC world std) ^b	35.0	46.5	26.0	35.0	45.7	26.6	41.9	64.3	26.2
<u>AGE-SPECIFIC RATES, 1998-2002</u>									
AGE AT DEATH:									
<1	-	-	-	-	-	-	-	-	-
1-4	-	-	-	-	-	-	-	-	-
5-9	-	-	-	-	-	-	-	-	-
10-14	-	-	-	-	-	-	-	-	-
15-19	0.0	-	-	-	-	-	-	-	-
20-24	0.1	0.1	-	0.1	0.1	-	-	-	-
25-29	0.2	0.2	0.2	0.2	0.2	0.2	0.2	-	-
30-34	0.7	0.7	0.7	0.7	0.7	0.7	0.6	0.6	0.6
35-39	2.9	2.9	2.8	2.8	2.8	2.8	4.2	4.7	3.7
40-44	9.3	10.4	8.3	8.8	9.5	8.1	14.8	19.1	11.1
45-49	20.5	24.5	16.5	19.2	22.3	16.0	34.1	46.5	23.4
50-54	43.5	53.5	34.0	41.9	49.9	34.1	67.9	98.6	41.9
55-59	91.0	114.1	69.4	89.8	109.8	70.8	124.3	182.7	76.5
60-64	159.0	202.5	119.6	159.5	198.7	123.3	194.5	290.1	119.5
65-69	242.8	318.0	178.3	245.1	315.0	183.9	275.8	419.0	169.9
70-74	326.0	440.8	235.5	329.2	438.1	241.9	355.3	558.1	220.4
75-79	368.3	517.6	264.0	371.3	514.1	270.5	393.0	651.5	237.6
80-84	370.2	551.3	262.9	374.3	550.1	269.2	360.2	643.6	217.3
85+	297.2	511.8	208.6	299.7	514.1	211.3	281.4	543.8	182.5

^a NCHS public use data file for the total US. Rates are per 100,000 and are age-adjusted to the 2000 US Std Population (19 age groups - Census P25-1130), unless noted.

^b NCHS public use data file for the total US. Rates are per 100,000 and are age-adjusted to the IARC world standard population.

- Statistic not shown. Rate based on less than 25 cases for the time interval.

Table XV-7
LUNG AND BRONCHUS CANCER (Invasive)

SURVIVAL RATES, BY RACE, SEX, DIAGNOSIS YEAR, STAGE AND AGE

	All Races			Whites			Blacks		
	Total	Males	Females	Total	Males	Females	Total	Males	Females
<u>5-YR RELATIVE SURVIVAL RATES</u>									
YEAR OF DIAGNOSIS:									
1960-1963 ^a	-	-	-	8	7	11	5	5	6
1970-1973 ^a	-	-	-	10	9	14	7	6	10
1974-1976 ^b	12.4	11.1	15.8	12.5	11.1	16.0	11.4	10.9	13.0
1977-1979 ^b	13.3	11.7	17.1	13.6	12.0	17.1	11.1	9.0	17.4
1980-1982 ^b	13.4	12.0	16.1	13.5	12.1	16.2	12.1	10.9	15.6
1983-1985 ^b	13.6	11.8	16.8	13.8	12.0	17.0	11.4	10.3	14.3
1986-1988 ^b	13.3	12.0	15.4	13.5	12.0	15.9	11.8	12.0	11.6
1989-1991 ^b	14.0	12.5	16.3	14.4	12.8	16.7	10.8	9.5	12.9
1992-1994 ^b	14.7	12.9	17.1	15.1	13.3	17.4	11.9	10.5	14.3
1995-2001 ^b	15.3 ^d	13.6 ^d	17.5 ^d	15.5 ^d	13.7 ^d	17.7 ^d	13.2 ^d	11.6	15.6
1995-2001 ^b									
All Stages	15.3	13.6	17.5	15.5	13.7	17.7	13.2	11.6	15.6
Localized	49.5	45.1	53.9	49.9	45.6	54.1	43.8	40.2	48.3
Regional	16.2	15.2	17.4	16.4	15.4	17.6	14.7	13.4	16.6
Distant	2.1	1.9	2.3	2.0	1.8	2.3	1.6	1.6	1.6
Unstaged	8.5	8.3	8.8	8.2	7.9	8.5	10.5	10.2	10.9
<u>5-YR PERIOD SURVIVAL RATES^{bc}</u>									
YEAR OF DIAGNOSIS:									
1995-2001	15.7	13.6	18.2	15.8	13.6	18.4	13.7	12.1	15.7
<u>STAGE DISTRIBUTION (%) 1995-2001^b</u>									
All Stages									
Number of cases	87,586	49,297	38,289	72,852	40,131	32,721	9,189	5,649	3,540
Percent	100%	100%	100%	100%	100%	100%	100%	100%	100%
Localized	16	15	18	17	15	18	14	13	16
Regional	37	38	36	37	37	36	38	38	38
Distant	39	40	38	39	40	38	41	42	39
Unstaged	8	7	8	8	8	8	7	7	7
<u>5-YR RELATIVE SURVIVAL RATES, 1995-2001^b</u>									
AGE AT DIAGNOSIS:									
<45	22.0	19.9	24.4	24.7	23.4	26.1	14.4	11.3	18.8
45-54	18.7	15.5	23.0	19.1	15.5	23.7	16.1	14.6	18.6
55-64	17.6	15.4	20.5	17.9	15.8	20.7	14.1	11.9	17.9
65-74	15.4	13.6	17.6	15.6	13.7	17.9	12.4	11.1	14.1
75+	10.2	9.2	11.2	10.3	9.2	11.4	9.6	8.4	10.4
Under 65	18.3	15.8	21.6	18.8	16.2	22.0	14.8	12.7	18.3
65 and over	13.4	12.0	14.9	13.5	12.0	15.1	11.4	10.4	12.8

^a Rates are based on End Results data from a series of hospital registries and one population-based registry.

^b Rates are from the SEER 9 areas (San Francisco, Connecticut, Detroit, Hawaii, Iowa, New Mexico, Seattle, Utah, Atlanta). Rates are based on follow-up of patients into 2002.

^c Period survival provides a more up-to-date estimate of survival by piecing together the most recent conditional survival estimates from several cohorts. It is computed here using three calendar year blocks (1999-2001: 0-1 year survival), (1998-2000: 1-2 year survival), (1997-1999: 2-3 year survival), (1996-1998: 3-4 year survival), (1995-1997: 4-5 years survival).

^d The difference in rates between 1974-1976 and 1995-2001 is statistically significant (p<.05).

^e The standard error of the survival rate is between 5 and 10 percentage points.

^f The standard error of the survival rate is greater than 10 percentage points.

- Statistic could not be calculated.

Table XV-8
SMALL CELL LUNG AND BRONCHUS CANCER (Invasive)

SURVIVAL RATES, BY RACE, SEX, DIAGNOSIS YEAR, STAGE AND AGE

	All Races			Whites			Blacks		
	Total	Males	Females	Total	Males	Females	Total	Males	Females
<u>5-YR RELATIVE SURVIVAL RATES</u>									
YEAR OF DIAGNOSIS:									
1974-1976 ^a	3.6	2.9	5.1	3.6	2.8	5.1	3.3	3.5	3.0
1977-1979 ^a	4.4	3.2	6.7	4.5	3.3	6.7	3.8	3.3	4.7
1980-1982 ^a	4.7	3.8	6.2	4.8	4.0	6.2	3.9	2.9	6.4
1983-1985 ^a	4.7	3.5	6.6	4.8	3.6	6.6	4.6	2.4	8.5
1986-1988 ^a	5.0	3.9	6.5	5.2	4.0	6.8	3.9	3.4	4.5
1989-1991 ^a	5.5	4.6	6.5	5.5	4.3	6.9	3.6	4.1	2.8
1992-1994 ^a	6.2	4.8	7.8	6.2	4.8	7.7	5.5	3.8	7.5
1995-2001 ^a	6.4 ^c	5.6 ^c	7.2 ^c	6.4 ^c	5.6 ^c	7.3 ^c	5.7 ^c	5.1 ^c	6.1
1995-2001 ^a									
All Stages	6.4	5.6	7.2	6.4	5.6	7.3	5.7	5.1	6.1
Localized	21.3	20.7	21.6	20.6	20.2	20.8	24.4 ^d	28.2 ^e	20.2 ^e
Regional	10.9	9.9	11.7	10.9	9.9	11.8	11.1	10.5	11.1
Distant	2.0	1.8	2.2	2.1	1.8	2.5	0.3	0.0	0.5
Unstaged	6.6	5.7	6.9	6.5	5.8	6.8	10.6 ^d	-	10.8 ^d
<u>5-YR PERIOD SURVIVAL RATES^{ab}</u>									
YEAR OF DIAGNOSIS:									
1995-2001	6.4	5.2	7.7	6.6	5.1	8.1	5.3	5.5	4.6
<u>STAGE DISTRIBUTION (%) 1995-2001^a</u>									
All Stages									
Number of cases	13,034	6,856	6,178	11,401	5,901	5,500	1,020	563	457
Percent	100%	100%	100%	100%	100%	100%	100%	100%	100%
Localized	6	6	7	6	6	7	6	6	6
Regional	34	32	36	34	31	36	35	33	37
Distant	55	58	52	55	58	52	55	57	51
Unstaged	5	5	5	5	5	5	5	4	6
<u>5-YR RELATIVE SURVIVAL RATES, 1995-2001^a</u>									
AGE AT DIAGNOSIS:									
<45	6.4 ^c	5.6 ^c	7.2 ^c	6.4 ^c	5.6 ^c	7.3 ^c	5.7 ^c	5.1 ^c	6.1
45-54	9.3	7.3	11.7	9.1	7.4	11.0	8.5	4.2	13.6
55-64	8.1	7.0	9.3	8.4	7.3	9.5	4.4	3.8	5.1
65-74	5.5	4.7	6.3	5.4	4.2	6.5	6.4	7.5	5.4
75+	3.3	3.3	3.1	3.3	3.3	3.2	2.6	3.7	1.5
Under 65	8.5	7.3	10.0	8.7	7.5	10.1	5.8	3.9	8.3
65 and over	4.8	4.2	5.2	4.7	3.9	5.4	5.4	6.3	4.4

^a Rates are from the SEER 9 areas (San Francisco, Connecticut, Detroit, Hawaii, Iowa, New Mexico, Seattle, Utah, Atlanta). Rates are based on follow-up of patients into 2002.

^b Period survival provides a more up-to-date estimate of survival by piecing together the most recent conditional survival estimates from several cohorts. It is computed here using three calendar year blocks (1999-2001: 0-1 year survival), (1998-2000: 1-2 year survival), (1997-1999: 2-3 year survival), (1996-1998: 3-4 year survival), (1995-1997: 4-5 years survival).

^c The difference in rates between 1974-1976 and 1995-2001 is statistically significant (p<.05).

^d The standard error of the survival rate is between 5 and 10 percentage points.

^e The standard error of the survival rate is greater than 10 percentage points.

- Statistic could not be calculated.

Table XV-9
NON-SMALL CELL LUNG AND BRONCHUS CANCER (Invasive)

SURVIVAL RATES, BY RACE, SEX, DIAGNOSIS YEAR, STAGE AND AGE

	All Races			Whites			Blacks		
	Total	Males	Females	Total	Males	Females	Total	Males	Females
<u>5-YR RELATIVE SURVIVAL RATES</u>									
YEAR OF DIAGNOSIS:									
1974-1976 ^a	13.8	12.3	17.8	13.9	12.4	18.1	12.3	11.6	14.8
1977-1979 ^a	15.0	13.2	19.3	15.4	13.6	19.5	12.0	9.7	19.6
1980-1982 ^a	15.1	13.6	18.4	15.4	13.8	18.7	13.2	11.9	17.0
1983-1985 ^a	15.4	13.5	19.2	15.8	13.7	19.6	12.4	11.3	15.3
1986-1988 ^a	15.1	13.6	17.6	15.4	13.7	18.2	13.1	13.2	12.9
1989-1991 ^a	15.8	14.0	18.6	16.4	14.5	19.2	11.8	10.2	14.7
1992-1994 ^a	16.3	14.3	19.1	16.9	14.8	19.7	12.8	11.3	15.4
1995-2001 ^a	17.0 ^c	14.9 ^c	19.6 ^c	17.3 ^c	15.2 ^c	19.9 ^c	14.2 ^c	12.3	17.1
1995-2001 ^a									
All Stages	17.0	14.9	19.6	17.3	15.2	19.9	14.2	12.3	17.1
Localized	51.3	46.6	56.0	51.9	47.2	56.4	44.6	40.7	49.5
Regional	17.1	15.9	18.5	17.3	16.1	18.8	15.2	13.6	17.5
Distant	2.1	2.0	2.3	2.0	1.8	2.3	1.9	1.9	2.0
Unstaged	8.8	8.5	9.0	8.4	8.1	8.7	10.5	10.2	10.9
<u>5-YR PERIOD SURVIVAL RATES^{ab}</u>									
YEAR OF DIAGNOSIS:									
1995-2001	17.4	15.0	20.2	17.6	15.1	20.5	14.8	12.8	17.6
<u>STAGE DISTRIBUTION (%) 1995-2001^a</u>									
All Stages									
Number of cases	74,552	42,441	32,111	61,451	34,230	27,221	8,169	5,086	3,083
Percent	100%	100%	100%	100%	100%	100%	100%	100%	100%
Localized	18	16	20	18	17	21	15	14	18
Regional	38	39	36	37	38	36	38	38	38
Distant	37	38	35	36	37	35	39	41	37
Unstaged	8	8	9	8	8	9	7	7	8
<u>5-YR RELATIVE SURVIVAL RATES, 1995-2001^a</u>									
AGE AT DIAGNOSIS:									
<45	23.5	21.1	26.2	26.7	25.2	28.3	15.3	11.9	20.0
45-54	20.4	16.9	25.1	21.2	17.1	26.2	16.9	15.5	19.5
55-64	19.6	17.1	23.3	20.2	17.6	23.6	15.4	12.8	19.8
65-74	17.3	15.1	20.1	17.7	15.4	20.5	13.2	11.5	15.9
75+	11.2	9.9	12.4	11.3	10.0	12.6	10.3	8.9	11.5
Under 65	20.2	17.4	24.1	21.0	18.0	24.8	15.9	13.6	19.8
65 and over	14.8	13.2	16.8	15.1	13.3	17.1	12.2	10.8	14.3

^a Rates are from the SEER 9 areas (San Francisco, Connecticut, Detroit, Hawaii, Iowa, New Mexico, Seattle, Utah, Atlanta). Rates are based on follow-up of patients into 2002.

^b Period survival provides a more up-to-date estimate of survival by piecing together the most recent conditional survival estimates from several cohorts. It is computed here using three calendar year blocks (1999-2001: 0-1 year survival), (1998-2000: 1-2 year survival), (1997-1999: 2-3 year survival), (1996-1998: 3-4 year survival), (1995-1997: 4-5 years survival).

^c The difference in rates between 1974-1976 and 1995-2001 is statistically significant (p<.05).

^d The standard error of the survival rate is between 5 and 10 percentage points.

^e The standard error of the survival rate is greater than 10 percentage points.

- Statistic could not be calculated.

Table XV-10
LUNG AND BRONCHUS CANCER (Invasive)

SURVIVAL RATES^a

By Year of Diagnosis

All Races, Males and Females

Year of Diagnosis

	1975- 1979	1980- 1984	1985	1986	1987	1988	1989	1990	1991	1992	1993	1994	1995	1996	1997	1998	1999	2000	2001
Relative Survival Rates (SEER ^b)																			
1-year	36.8	38.7	39.5	40.3	39.7	40.2	40.4	40.3	41.3	41.1	40.8	41.0	41.6	41.1	41.8	41.3	42.7	42.3	41.3
2-year	21.7	22.6	23.0	23.2	22.8	23.3	23.5	23.6	24.0	24.8	24.6	24.6	25.5	25.5	25.4	25.8	26.4	26.5	
3-year	16.7	17.4	17.7	17.7	17.0	17.7	17.6	18.0	18.8	19.0	18.9	19.1	19.6	19.9	19.9	20.2	20.3		
4-year	14.4	14.9	15.1	14.8	14.8	15.1	15.3	15.3	16.0	16.2	16.2	16.4	17.1	16.9	17.1	17.4			
5-year	13.0	13.4	13.6	13.2	13.3	13.4	14.0	13.8	14.2	14.4	14.8	14.9	15.2	15.3	15.4				
6-year	12.1	12.3	12.6	12.1	12.2	12.2	13.0	12.7	13.3	13.2	13.7	13.7	13.9	14.0					
7-year	11.4	11.5	11.6	11.4	11.1	11.3	12.0	11.8	12.1	12.2	12.8	12.8	13.2						
8-year	10.8	10.7	10.9	10.6	10.5	10.6	11.2	11.1	11.3	11.3	11.9	12.1							
9-year	10.2	10.0	10.2	10.1	9.8	9.9	10.6	10.2	10.8	10.6	11.3								
11-year	9.7	9.4	9.7	9.5	9.4	9.4	10.1	9.6	10.3	10.0									
10-year	9.2	9.1	9.2	8.9	8.9	8.9	9.5	9.0	9.7										
12-year	8.9	8.6	8.8	8.5	8.5	8.3	9.2	8.5											
13-year	8.5	8.2	8.5	8.1	8.0	8.0	8.8												
14-year	8.2	7.9	8.2	7.8	7.6	7.7													
15-year	7.8	7.5	7.8	7.5	7.3														
16-year	7.6	7.2	7.4	7.2															
17-year	7.4	6.9	6.7																
18-year	7.1	6.6																	
19-year	6.8																		
20-year	6.6																		

^a Survival rates are relative rates expressed as percents.
^b Rates are from the SEER 9 areas.

Table XV-11
LUNG AND BRONCHUS CANCER (Invasive)

SURVIVAL RATES^a

By Year of Diagnosis

All Races, Males

Year of Diagnosis

	1975- 1979	1980- 1984	1985	1986	1987	1988	1989	1990	1991	1992	1993	1994	1995	1996	1997	1998	1999	2000	2001
Relative Survival Rates (SEER ^b)																			
1-year	34.8	36.8	36.9	38.3	38.2	38.1	38.0	38.1	39.0	39.0	38.2	38.7	39.4	39.4	39.5	38.6	39.7	40.0	38.3
2-year	20.1	20.8	21.0	21.0	21.7	21.8	22.0	21.3	22.0	23.3	22.2	22.2	23.7	23.8	23.8	23.4	23.5	24.3	
3-year	15.1	15.7	15.7	16.0	15.9	16.4	16.2	16.0	17.1	17.6	16.5	16.9	17.7	18.4	18.4	17.9	17.2		
4-year	12.9	13.4	13.0	13.1	13.7	13.7	14.0	13.5	14.1	14.8	14.0	14.2	15.4	15.3	15.6	15.2			
5-year	11.6	12.0	11.7	11.6	12.3	12.1	12.8	12.0	12.6	13.2	12.7	12.9	13.7	13.8	14.1				
6-year	10.6	10.9	10.8	10.6	11.3	10.8	12.0	11.0	11.8	11.9	11.7	11.8	12.5	12.6					
7-year	10.0	10.1	9.9	9.9	10.4	9.9	11.3	10.3	10.6	11.0	10.9	10.9	12.0						
8-year	9.5	9.3	9.2	9.1	9.9	9.1	10.7	9.5	9.8	10.0	10.1	10.2							
9-year	9.0	8.7	8.7	8.6	9.3	8.6	10.2	8.6	9.3	9.3	9.6								
11-year	8.4	8.1	8.2	8.1	8.8	8.2	9.8	8.0	9.0	8.7									
10-year	8.0	7.8	7.9	7.5	8.3	7.7	9.2	7.4	8.4										
12-year	7.6	7.5	7.5	7.0	7.9	7.1	8.8	7.0											
13-year	7.3	7.1	7.2	6.7	7.3	6.8	8.4												
14-year	7.1	6.8	7.0	6.5	7.0	6.6													
15-year	6.6	6.5	6.6	6.2	6.8														
16-year	6.4	6.1	6.4	5.9															
17-year	6.3	5.8	5.7																
18-year	6.0	5.6																	
19-year	5.8																		
20-year	5.6																		

^a Survival rates are relative rates expressed as percents.
^b Rates are from the SEER 9 areas.

Table XV-12
LUNG AND BRONCHUS CANCER (Invasive)

SURVIVAL RATES^a

By Year of Diagnosis

All Races, Females

Year of Diagnosis

	1975- 1979	1980- 1984	1985	1986	1987	1988	1989	1990	1991	1992	1993	1994	1995	1996	1997	1998	1999	2000	2001
Relative Survival Rates (SEER ^b)																			
1-year	41.9	42.7	44.7	43.9	42.2	43.6	44.2	43.8	44.7	44.1	44.6	44.0	44.6	43.5	44.6	44.7	46.4	45.2	45.1
2-year	25.9	26.2	26.8	27.1	24.6	25.8	25.8	27.1	26.9	27.0	28.0	27.8	27.9	27.7	27.5	28.8	30.0	29.1	
3-year	20.7	20.9	21.5	20.6	18.9	19.7	19.8	21.0	21.2	21.1	22.3	22.1	22.1	21.8	21.7	23.0	23.9		
4-year	18.2	18.1	18.9	17.8	16.6	17.5	17.3	18.1	18.7	18.3	19.4	19.3	19.3	18.9	19.0	20.0			
5-year	16.6	16.3	17.0	15.9	14.8	15.6	15.7	16.5	16.6	16.1	17.8	17.4	17.0	17.1	17.0				
6-year	15.4	15.0	15.9	14.7	13.6	14.4	14.5	15.2	15.3	15.0	16.4	16.2	15.7	15.7					
7-year	14.5	14.1	14.6	13.8	12.2	13.5	13.2	14.0	14.2	13.9	15.2	15.1	14.6						
8-year	13.7	13.3	13.7	12.9	11.5	12.7	12.0	13.3	13.4	13.1	14.2	14.3							
9-year	13.0	12.4	12.8	12.5	10.5	11.9	11.3	12.5	12.7	12.4	13.4								
11-year	12.3	11.7	12.2	11.5	10.3	11.2	10.6	11.7	12.0	11.7									
10-year	11.8	11.2	11.4	11.1	9.8	10.5	10.1	11.2	11.3										
12-year	11.4	10.6	11.0	10.7	9.4	9.8	9.6	10.4											
13-year	11.1	10.1	10.5	10.1	9.0	9.6	9.3												
14-year	10.5	9.7	9.9	9.7	8.4	9.1													
15-year	10.1	9.3	9.5	9.2	8.1														
16-year	9.8	8.8	8.8	9.0															
17-year	9.4	8.6	8.0																
18-year	9.0	8.1																	
19-year	8.7																		
20-year	8.4																		

^a Survival rates are relative rates expressed as percents.
^b Rates are from the SEER 9 areas.

Table XV-13
LUNG AND BRONCHUS CANCER (Invasive)

Percent Diagnosed With Cancer In 10, 20 and 30 Years and In Remaining Lifetime,
 Given Cancer Free At Current Age By Race and Sex

Lifetime Risk (Percent) of Being Diagnosed (13 SEER Areas) With Cancer and
 Lifetime Risk (Percent) of Dying (Total U.S.) From Cancer

2000-2002

All Races

Current Age	Males				Females			
	+10 yrs	+20 yrs	+30 yrs	Eventually	+10 yrs	+20 yrs	+30 yrs	Eventually
0	0.00	0.00	0.01	7.58	0.00	0.00	0.01	5.72
10	0.00	0.01	0.03	7.69	0.00	0.01	0.03	5.78
20	0.00	0.03	0.21	7.73	0.00	0.03	0.19	5.80
30	0.03	0.21	1.01	7.82	0.03	0.19	0.82	5.82
40	0.19	1.00	3.19	7.92	0.16	0.80	2.37	5.84
50	0.84	3.11	6.14	8.01	0.65	2.25	4.36	5.79
60	2.45	5.72	7.47	7.74	1.68	3.89	5.18	5.39

Lifetime Risk of Being Diagnosed = 7.58%
 Lifetime Risk of Dying = 7.25%

Lifetime Risk of Being Diagnosed = 5.72%
 Lifetime Risk of Dying = 4.92%

Whites

Current Age	Males				Females			
	+10 yrs	+20 yrs	+30 yrs	Eventually	+10 yrs	+20 yrs	+30 yrs	Eventually
0	0.00	0.00	0.01	7.59	0.00	0.00	0.01	6.01
10	0.00	0.01	0.03	7.68	0.00	0.01	0.03	6.07
20	0.00	0.03	0.19	7.72	0.00	0.03	0.19	6.08
30	0.02	0.19	0.94	7.79	0.03	0.19	0.84	6.10
40	0.17	0.93	3.12	7.89	0.16	0.82	2.49	6.12
50	0.79	3.05	6.13	7.98	0.67	2.37	4.62	6.07
60	2.42	5.74	7.46	7.71	1.78	4.13	5.44	5.65

Lifetime Risk of Being Diagnosed = 7.59%
 Lifetime Risk of Dying = 7.33%

Lifetime Risk of Being Diagnosed = 6.01%
 Lifetime Risk of Dying = 5.12%

Blacks

Current Age	Males				Females			
	+10 yrs	+20 yrs	+30 yrs	Eventually	+10 yrs	+20 yrs	+30 yrs	Eventually
0	0.00	0.00	0.00	8.08	0.00	0.00	0.00	5.24
10	0.00	0.00	0.04	8.30	0.00	0.00	0.04	5.35
20	0.00	0.04	0.40	8.38	0.00	0.03	0.28	5.37
30	0.04	0.40	1.79	8.60	0.03	0.28	1.11	5.41
40	0.38	1.81	4.68	8.85	0.25	1.09	2.70	5.46
50	1.54	4.62	7.62	9.10	0.87	2.55	4.41	5.44
60	3.58	7.06	8.62	8.79	1.83	3.86	4.80	4.99

Lifetime Risk of Being Diagnosed = 8.08%
 Lifetime Risk of Dying = 7.29%

Lifetime Risk of Being Diagnosed = 5.24%
 Lifetime Risk of Dying = 3.97%

Devcan Version 6.0, April 2005, National Cancer Institute (<http://srab.cancer.gov/devcan/>).

Source: Incidence data are from the SEER 13 areas (San Francisco, Connecticut, Detroit, Hawaii, Iowa, New Mexico, Seattle, Utah, Atlanta, San Jose-Monterey, Los Angeles, Alaska Native Registry, Rural Georgia). Mortality data are from the NCHS public use data file for the total US.

Table XV-14
LUNG AND BRONCHUS (Invasive)

SEER INCIDENCE AND U.S. MORTALITY
AGE-ADJUSTED RATES AND TRENDS^a
By Race/Ethnicity and Sex

Incidence^b

RACE/ETHNICITY	Rate 1998-2002			Trend 1992-2002		
	Rate per 100,000 persons			APC (%)		
	Total	Males	Females	Total	Males	Females
All Races	61.0	77.8	48.9	-1.3 ^e	-2.2 ^e	-0.2
White	61.7	76.7	51.1	-1.1 ^e	-2.1 ^e	-0.1
White Hispanic ^c	32.8	45.8	23.9	-1.8 ^e	-2.1 ^e	-1.5 ^e
White Non-Hispanic ^c	63.5	77.7	53.2	-1.0 ^e	-2.0 ^e	0.0
Black	78.8	113.9	55.2	-1.4 ^e	-2.5 ^e	0.5
Asian/Pacific Islander	41.8	59.4	28.3	-1.1 ^e	-1.4 ^e	0.0
Amer Ind/Alaska Nat	31.8	42.6	23.6	-4.2 ^e	-5.4 ^e	-2.8 ^e
Hispanic ^c	31.9	44.6	23.3	-1.8 ^e	-2.0 ^e	-1.5 ^e

Mortality^d

RACE/ETHNICITY	Rate 1998-2002			Trend 1992-2002		
	Rate per 100,000 persons			APC (%)		
	Total	Males	Females	Total	Males	Females
All Races	55.7	76.3	40.9	-0.8 ^e	-1.9 ^e	0.6 ^e
White	55.8	75.2	41.8	-0.7 ^e	-1.7 ^e	0.7 ^e
White Hispanic ^c	25.3	39.4	15.1	-0.9 ^e	-1.6 ^e	0.1
White Non-Hispanic ^c	58.4	78.6	43.8	-0.5 ^e	-1.6 ^e	0.8 ^e
Black	64.1	101.3	39.9	-1.5 ^e	-2.5 ^e	0.4 ^e
Asian/Pacific Islander	27.7	39.4	18.8	-1.5 ^e	-1.9 ^e	-0.4
Amer Ind/Alaska Nat	35.4	47.0	27.1	-0.9	-2.3	1.0
Hispanic ^c	24.8	38.7	14.8	-0.9 ^e	-1.5 ^e	0.1

- The APC is the Annual Percent Change over the time interval.
 - Statistic not shown. Rate based on less than 25 cases for the time interval. Trend based on less than 10 cases for at least one year within the time interval.
 a Rates are age-adjusted to the 2000 US Std Population (19 age groups - Census P25-1130). Trends are based on rates age-adjusted to the 2000 US Std Population (19 age groups - Census P25-1130).
 b Incidence data are from the 13 SEER areas (San Francisco, Connecticut, Detroit, Hawaii, Iowa, New Mexico, Seattle, Utah, Atlanta, San Jose-Monterey, Los Angeles, Alaska Native Registry and Rural Georgia).
 c Hispanic and Non-Hispanic are not mutually exclusive from Whites, Blacks, Asian Pacific Islanders, and American Indians/Alaska Natives. Incidence data for Hispanics and Non-Hispanics do not include cases from Detroit, Hawaii, Alaska Native Registry and Rural Georgia. For mortality, information is included for all states except Connecticut, Maine, Maryland, Minnesota, New Hampshire, New York, North Dakota, Oklahoma and Vermont.
 d Mortality data are analyzed from a public use file provided by the National Center for Health Statistics (NCHS).
 e The APC is significantly different from zero (p<.05).

Table XV-15
LUNG AND BRONCHUS CANCER (Invasive)

AGE-ADJUSTED SEER INCIDENCE RATES AND SEER DEATH RATES^a
By Registry, Race and Sex

	All Races			Whites			Blacks		
	Total	Males	Females	Total	Males	Females	Total	Males	Females
<u>SEER INCIDENCE RATES^b, 1998-2002</u>									
REGISTRY									
13 SEER Areas	61.0	77.8	48.9	61.7	76.7	51.1	78.8	113.9	55.2
11 SEER Areas	60.9	77.6	48.9	61.7	76.6	51.1	78.9	113.6	55.6
9 SEER Areas	64.2	82.1	51.4	64.9	81.1	53.4	81.6	117.2	57.6
San Francisco-Oakland	58.0	70.7	48.9	59.2	68.1	53.0	81.5	108.0	62.8
Connecticut	68.6	86.0	56.8	69.0	85.6	57.7	70.2	100.8	50.5
Metropolitan Detroit	80.9	104.9	64.6	79.0	100.0	65.0	91.4	129.1	65.9
Hawaii	51.6	68.5	37.5	63.7	74.3	53.3	57.6	-	-
Iowa	66.4	90.1	49.4	66.1	89.7	49.4	99.6	139.0	68.8
New Mexico	46.9	61.2	35.9	49.1	63.3	38.2	56.1	96.4	-
Seattle-Puget Sound	72.4	87.2	61.7	74.0	87.6	64.4	91.2	130.9	58.0
Utah	30.8	42.3	21.5	30.9	42.6	21.6	-	-	-
Metropolitan Atlanta	67.6	92.4	51.3	67.7	88.1	54.1	70.5	112.2	46.1
San Jose-Monterey	50.4	60.7	43.1	53.2	62.8	46.7	61.1	82.1	42.8
Los Angeles	52.9	67.1	42.6	52.7	64.0	44.5	73.1	106.2	51.0
<u>SEER DEATH RATES^c, 1998-2002</u>									
REGISTRY									
13 SEER Areas	47.2	62.1	36.5	47.8	61.6	38.1	62.5	92.3	42.8
11 SEER Areas	47.0	61.9	36.4	47.7	61.5	38.0	62.5	91.9	43.0
9 SEER Areas	49.2	65.1	38.0	49.9	64.7	39.5	63.3	93.8	43.1
San Francisco-Oakland	46.5	58.6	38.0	48.1	57.6	41.6	68.6	97.6	48.8
Connecticut	49.7	64.4	39.8	49.9	64.0	40.5	52.8	82.2	35.0
Metropolitan Detroit	59.5	79.1	46.3	57.9	75.7	46.2	67.8	96.8	48.4
Hawaii	36.9	51.4	24.9	45.3	56.5	34.7	-	-	-
Iowa	51.4	73.6	35.9	51.2	73.3	35.8	92.1	125.2	66.7
New Mexico	38.6	51.5	29.0	40.3	53.0	30.7	48.3	82.1	-
Seattle-Puget Sound	56.0	69.4	46.2	57.5	70.1	48.4	70.6	102.8	44.3
Utah	25.4	35.7	17.4	25.4	35.7	17.4	-	-	-
Metropolitan Atlanta	54.0	77.6	39.0	54.3	74.8	41.3	55.6	91.3	34.8
San Jose-Monterey	39.3	48.5	32.7	41.5	50.3	35.4	57.5	76.3	40.3
Los Angeles	41.9	54.8	32.5	41.8	52.8	33.9	60.8	88.2	42.8

^a Incidence and death rates are per 100,000 and are age-adjusted to the 2000 US Std Population (19 age groups - Census P25-1130).

^b The SEER 9 areas are San Francisco, Connecticut, Detroit, Hawaii, Iowa, New Mexico, Seattle, Utah, and Atlanta. The SEER 11 areas comprise the SEER 9 areas plus San Jose-Monterey and Los Angeles. The SEER 13 areas comprise the SEER 11 areas plus the Alaska Native Registry and Rural Georgia.

^c NCHS public use data file for the total US with analyses limited to the SEER geographic areas.

- Statistic could not be calculated or populations are inadequate.

Table XV-16
LUNG AND BRONCHUS CANCER (Invasive)

AVERAGE ANNUAL AGE-ADJUSTED CANCER DEATH^a RATES BY STATE, ALL RACES, 1998-2002

Males and Females

State	Rate	SE	Rank	PD
TOTAL U.S.	55.7	0.06		
High Five States				
Kentucky	78.6 ^{bc}	0.62	(01)	41.1
West Virginia	72.3 ^{bc}	0.82	(02)	29.8
Mississippi	69.6 ^{bc}	0.71	(03)	25.0
Arkansas	69.1 ^{bc}	0.69	(04)	24.1
Tennessee	68.7 ^{bc}	0.49	(05)	23.3
Low Five States				
North Dakota	44.6 ^{bc}	1.13	(47)	-19.9
Colorado	41.8 ^{bc}	0.49	(48)	-25.0
New Mexico	38.6 ^{bc}	0.68	(49)	-30.7
Hawaii	36.9 ^{bc}	0.76	(50)	-33.8
Utah	25.4 ^{bc}	0.57	(51)	-54.4

Males

State	Rate	SE	Rank	PD
TOTAL U.S.	76.3	0.11		
High Five States				
Kentucky	114.0 ^{bc}	1.18	(01)	49.4
Mississippi	109.2 ^{bc}	1.41	(02)	43.1
Tennessee	104.0 ^{bc}	0.95	(03)	36.3
Arkansas	102.6 ^{bc}	1.30	(04)	34.5
West Virginia	100.7 ^{bc}	1.51	(05)	32.0
Low Five States				
Idaho	59.3 ^{bc}	1.51	(47)	-22.3
Colorado	53.7 ^{bc}	0.87	(48)	-29.6
New Mexico	51.5 ^{bc}	1.20	(49)	-32.5
Hawaii	51.4 ^{bc}	1.34	(50)	-32.6
Utah	35.7 ^{bc}	1.03	(51)	-53.2

Females

State	Rate	SE	Rank	PD
TOTAL U.S.	40.9	0.07		
High Five States				
Nevada	53.9 ^{bc}	1.06	(01)	31.8
Kentucky	53.7 ^{bc}	0.68	(02)	31.3
West Virginia	52.0 ^{bc}	0.93	(03)	27.1
Oregon	47.4 ^{bc}	0.70	(04)	15.9
Maine	47.3 ^{bc}	1.09	(05)	15.6
Low Five States				
South Dakota	33.3 ^{bc}	1.23	(47)	-18.6
North Dakota	30.5 ^{bc}	1.28	(48)	-25.4
New Mexico	29.0 ^{bc}	0.79	(49)	-29.1
Hawaii	24.9 ^{bc}	0.85	(50)	-39.1
Utah	17.4 ^{bc}	0.64	(51)	-57.5

For additional detailed cancer statistics by state, please visit the State Cancer Profiles website. <http://statecancerprofiles.cancer.gov/>

- ^a NCHS public use data file. Rates are per 100,000 and are age-adjusted to the 2000 US Std Population (19 age groups - Census P25-1130).
^b Absolute percent difference between state rate and total U.S. rate is 5% or more.
^c Difference between state rate and total U.S. rate is statistically significant (p<=.0002).
SE Standard error of the rate.
PD Percent difference between state rate and total U.S. rate.

Table XV-17
LUNG AND BRONCHUS CANCER (Invasive)

Estimated United States Cancer Prevalence Counts^a on January 1, 2002
By Race/Ethnicity, Sex and Years Since Diagnosis

Years Since Diagnosis	0 to <5	5 to <10	10 to <15	15 to <20	20 to <25	0 to <12 ^e	0 to <27 ^e	>=27 ^g	Complete ^h
Race/Sex									
All Races ^b	202,674	66,449	34,847	19,044	9,992	285,709	335,447	15,232	350,679
Males	100,886	31,832	17,196	9,088	5,225	140,466	165,547	8,837	174,384
Females	101,788	34,617	17,651	9,956	4,767	145,243	169,900	6,395	176,295
White ^b	175,678	58,481	31,066	16,790	8,911	248,962	293,060	7,873	300,933
Males	85,877	27,627	15,105	7,794	4,621	120,327	142,175	3,983	146,158
Females	89,801	30,854	15,961	8,996	4,290	128,635	150,885	3,890	154,775
Black ^b	21,046	6,293	2,977	1,846	823	28,719	33,207	795	34,002
Males	11,548	3,238	1,612	1,039	465	15,490	18,045	458	18,503
Females	9,498	3,055	1,365	807	358	13,229	15,162	337	15,499
Asian/Pacific Islander ^c	4,370	1,128	+	+	+	5,785	+	+	+
Males	2,541	661	+	+	+	3,384	+	+	+
Females	1,829	467	+	+	+	2,401	+	+	+
Hispanic ^d	5,121	1,563	+	+	+	7,119	+	+	+
Males	2,639	797	+	+	+	3,629	+	+	+
Females	2,482	766	+	+	+	3,490	+	+	+

Estimated prevalence percent^a on January 1, 2002, of the SEER 11 population diagnosed in the previous 10 years
By Age at Prevalence, Race/Ethnicity and Sex

Age at Prevalence	Age Specific (Crude)										Age-Adjusted ^f
	All Ages	0-9	10-19	20-29	30-39	40-49	50-59	60-69	70-79	80+	All Ages
Race/Sex											
All Races ^c	0.0788%	-	0.0002%	0.0011%	0.0039%	0.0254%	0.1142%	0.3380%	0.5493%	0.3730%	0.0870%
Males	0.0796%	-	0.0003%	0.0010%	0.0035%	0.0250%	0.1195%	0.3709%	0.6454%	0.4743%	0.0987%
Females	0.0781%	-	-	0.0012%	0.0044%	0.0258%	0.1091%	0.3086%	0.4770%	0.3184%	0.0784%
White ^c	0.0849%	-	0.0002%	0.0012%	0.0040%	0.0249%	0.1132%	0.3509%	0.5701%	0.3766%	0.0892%
Males	0.0827%	-	0.0004%	0.0010%	0.0034%	0.0237%	0.1126%	0.3718%	0.6482%	0.4690%	0.0978%
Females	0.0871%	-	-	0.0014%	0.0047%	0.0260%	0.1138%	0.3318%	0.5104%	0.3276%	0.0830%
Black ^c	0.0681%	-	-	0.0009%	0.0044%	0.0393%	0.1649%	0.4007%	0.5499%	0.3391%	0.0987%
Males	0.0772%	-	-	-	0.0040%	0.0425%	0.2121%	0.5055%	0.7107%	0.5122%	0.1271%
Females	0.0598%	-	-	-	0.0046%	0.0365%	0.1255%	0.3181%	0.4441%	0.2582%	0.0789%
Asian/Pacific Islander ^c	0.0539%	-	-	-	0.0032%	0.0176%	0.0792%	0.2116%	0.4017%	0.3550%	0.0632%
Males	0.0651%	-	-	-	0.0039%	0.0202%	0.0939%	0.2675%	0.5873%	0.4924%	0.0850%
Females	0.0433%	-	-	-	0.0025%	0.0153%	0.0663%	0.1654%	0.2643%	0.2607%	0.0466%
Hispanic ^d	0.0171%	-	-	0.0008%	0.0021%	0.0115%	0.0364%	0.1341%	0.2587%	0.2180%	0.0388%
Males	0.0168%	-	-	0.0007%	0.0021%	0.0115%	0.0406%	0.1435%	0.3305%	0.2732%	0.0463%
Females	0.0174%	-	-	0.0009%	0.0020%	0.0115%	0.0326%	0.1264%	0.2077%	0.1877%	0.0337%

^a US 2002 cancer prevalence counts are based on 2002 cancer prevalence proportions from the SEER registries and 1/1/2002 US population estimates based on the average of 2001 and 2002 population estimates from the US Bureau of the Census. Prevalence was calculated using the First Malignant Primary Only for a person.

^{b c d} Statistics based on b) SEER 9 Areas c) SEER 11 Areas and Rural Georgia d) SEER 11 Areas excluding Hawaii and Detroit.

^e Maximum limited-duration prevalence: 27 years for 1975-2002 SEER 9 data; 12 years for 1990-2002 SEER 11 data (used to calculate prevalence for Hispanics and Asian Pacific Islanders).

^f Percentages are age-adjusted to the 2000 US standard population by 5-year age groups.

^{g h} (g) Cases diagnosed more than 27 years ago were estimated using the completeness index method (Capocaccia et. al. 1997, Merrill et. al. 2000). (h) Complete prevalence is obtained by summing 0 to <27 and >=27.

- Statistic not shown. Statistic based on fewer than 5 cases estimated alive in SEER for the time interval.

+ Not available.

SEER Incidence, Delay Adjusted Incidence and US Death Rates+ Lung and Bronchus Cancer, by Race and Sex

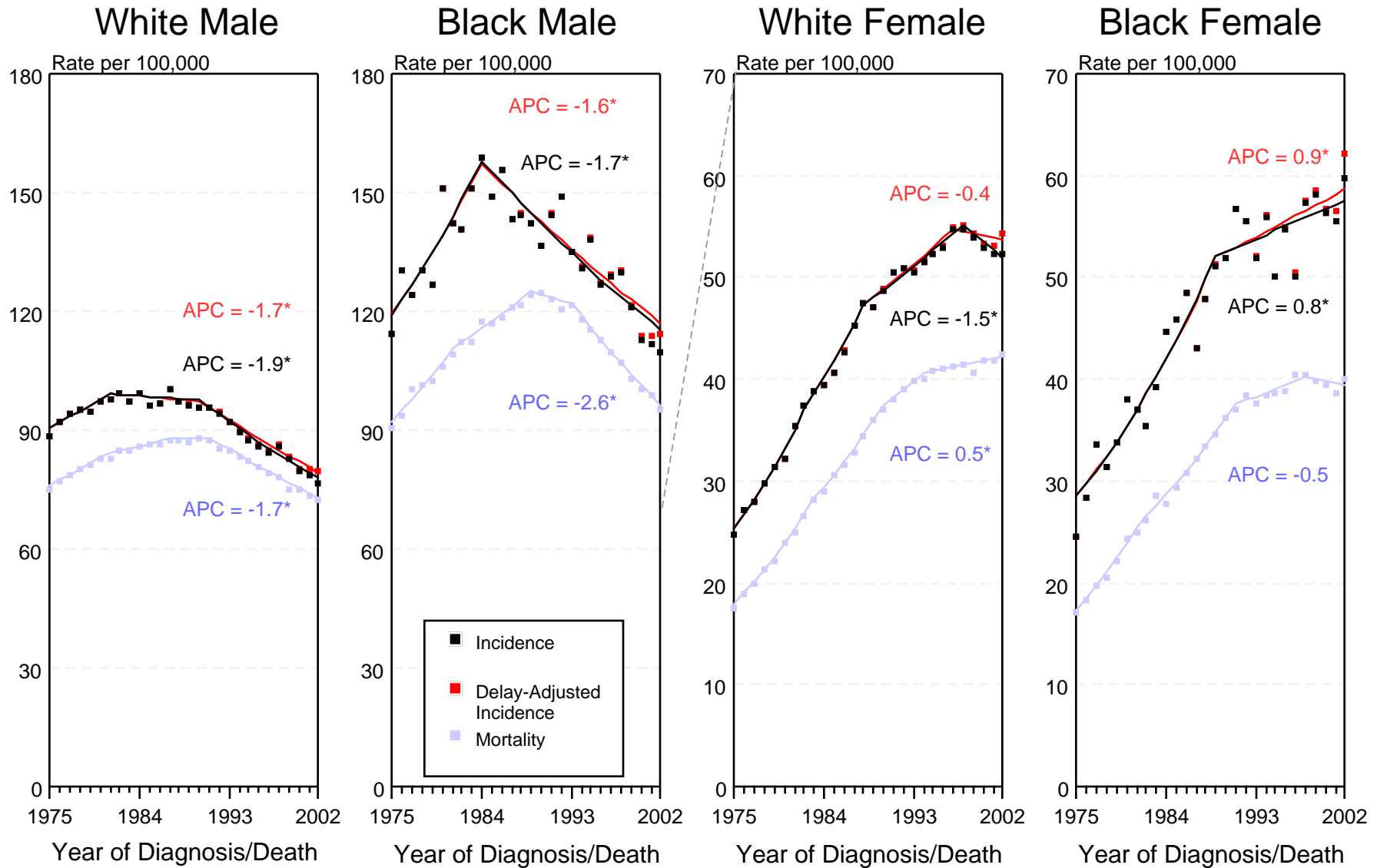


Figure XV-1

+ Source: SEER 9 areas and NCHS public use data file for the total US. Rates are age-adjusted to the 2000 US Std Population (19 age groups - Census P25-1103). Regression lines and APCs are calculated using the Joinpoint Regression Program Version 3.0, April 2005, National Cancer Institute.

The APC is the Annual Percent Change for the regression line segments. The APC shown on the graph is for the most recent trend.

* The APC is significantly different from zero ($p < 0.05$).

SEER Incidence and US Death Rates+ Lung and Bronchus Cancer, Under 65 Years of Age, by Race and Sex

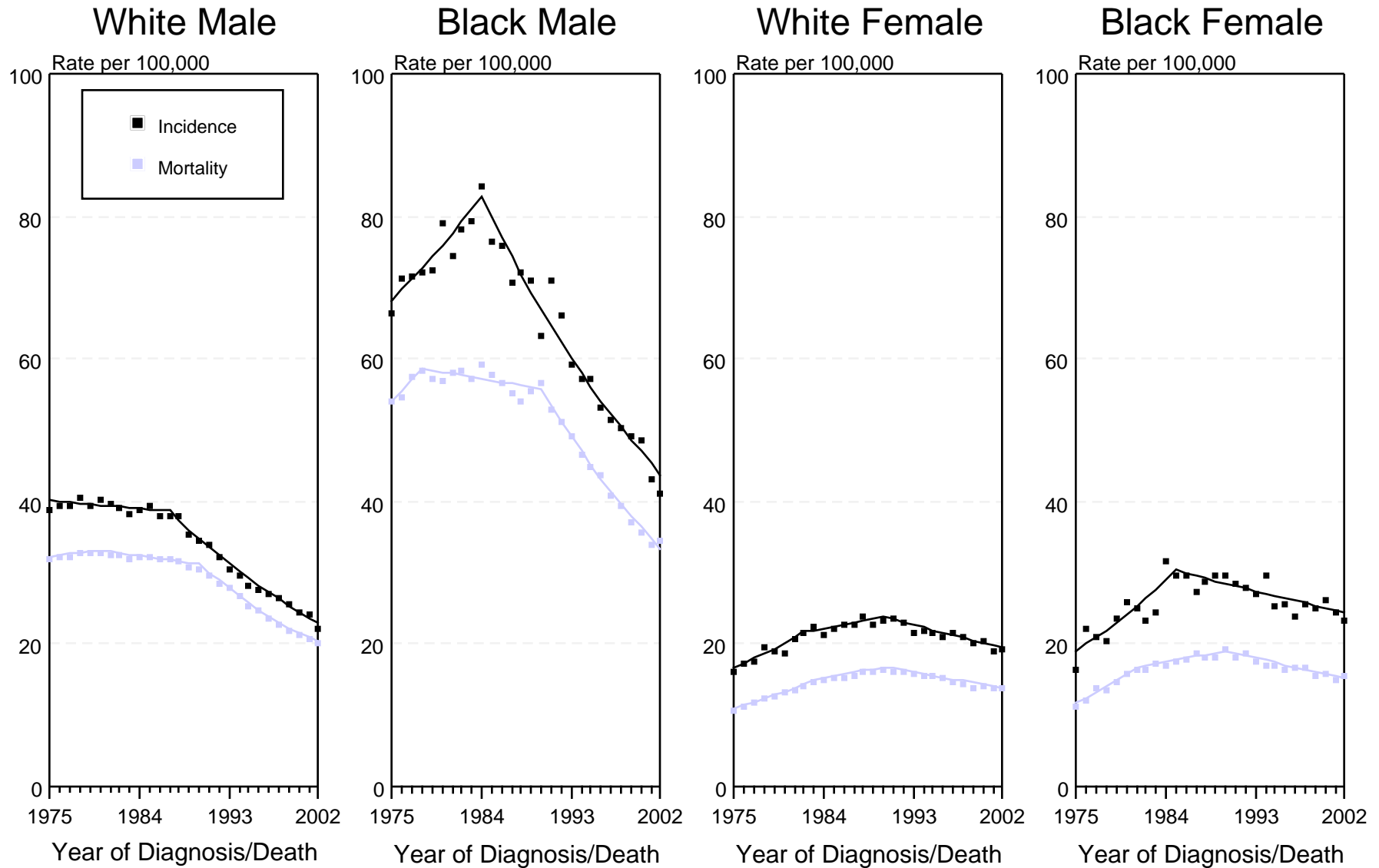


Figure XV-2

+ Source: SEER 9 areas and NCHS public use data file for the total US. Rates are age-adjusted to the 2000 US Std Population (19 age groups - Census P25-1103). Regression lines are calculated using the Joinpoint Regression Program Version 3.0, April 2005, National Cancer Institute.

SEER Incidence and US Death Rates+ Lung and Bronchus Cancer, Ages 65 and Over, by Race and Sex

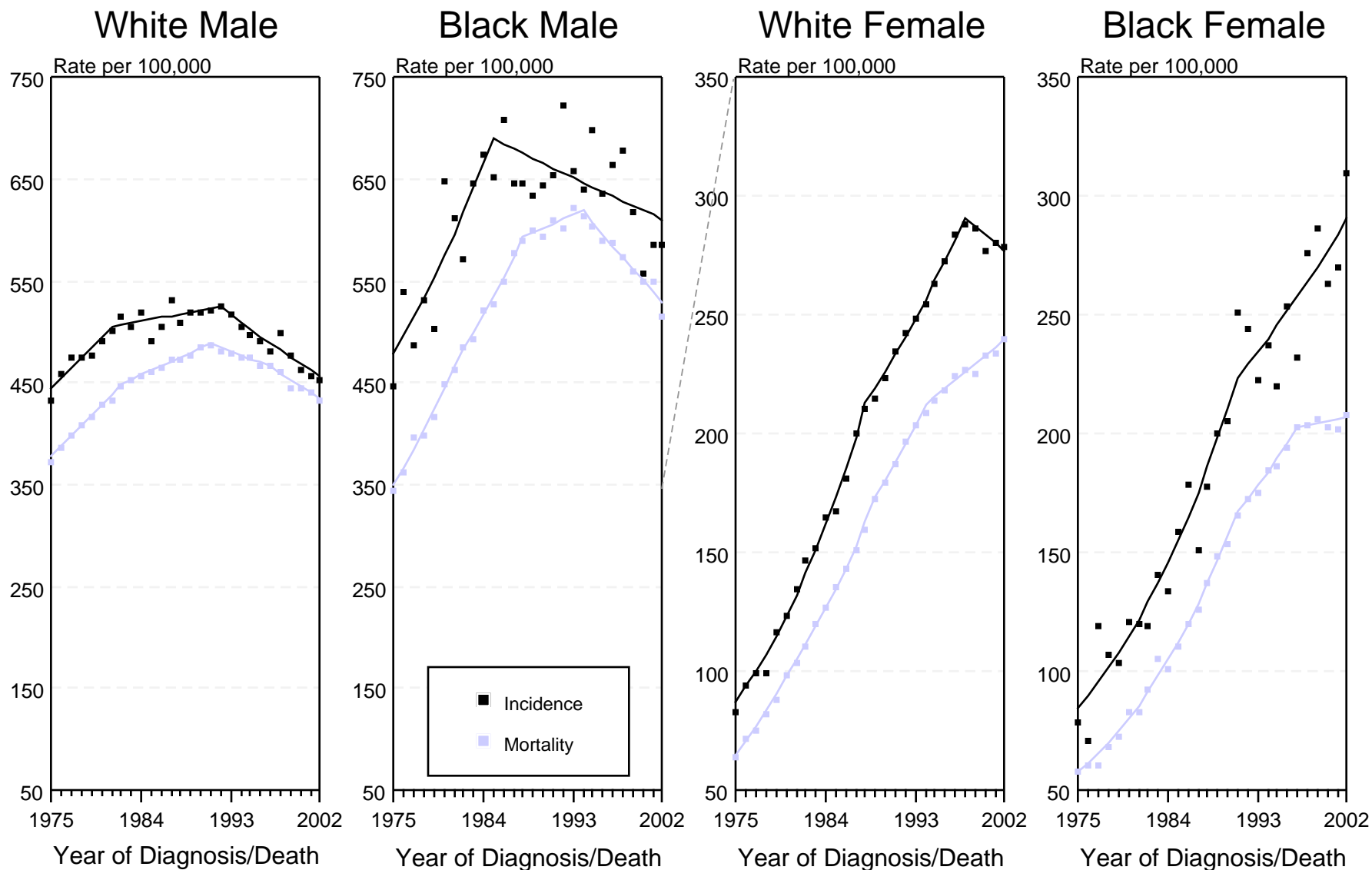


Figure XV-3

+ Source: SEER 9 areas and NCHS public use data file for the total US. Rates are age-adjusted to the 2000 US Std Population (19 age groups - Census P25-1103). Regression lines are calculated using the Joinpoint Regression Program Version 3.0, April 2005, National Cancer Institute.

SEER Incidence and US Death Rates + Lung and Bronchus Cancer, Both Sexes

Joinpoint Analyses for 1975-2002 for Whites and Blacks

Rates for 1992-2002 for Asian/Pacific Islander, American Indian/Alaska Native and Hispanic

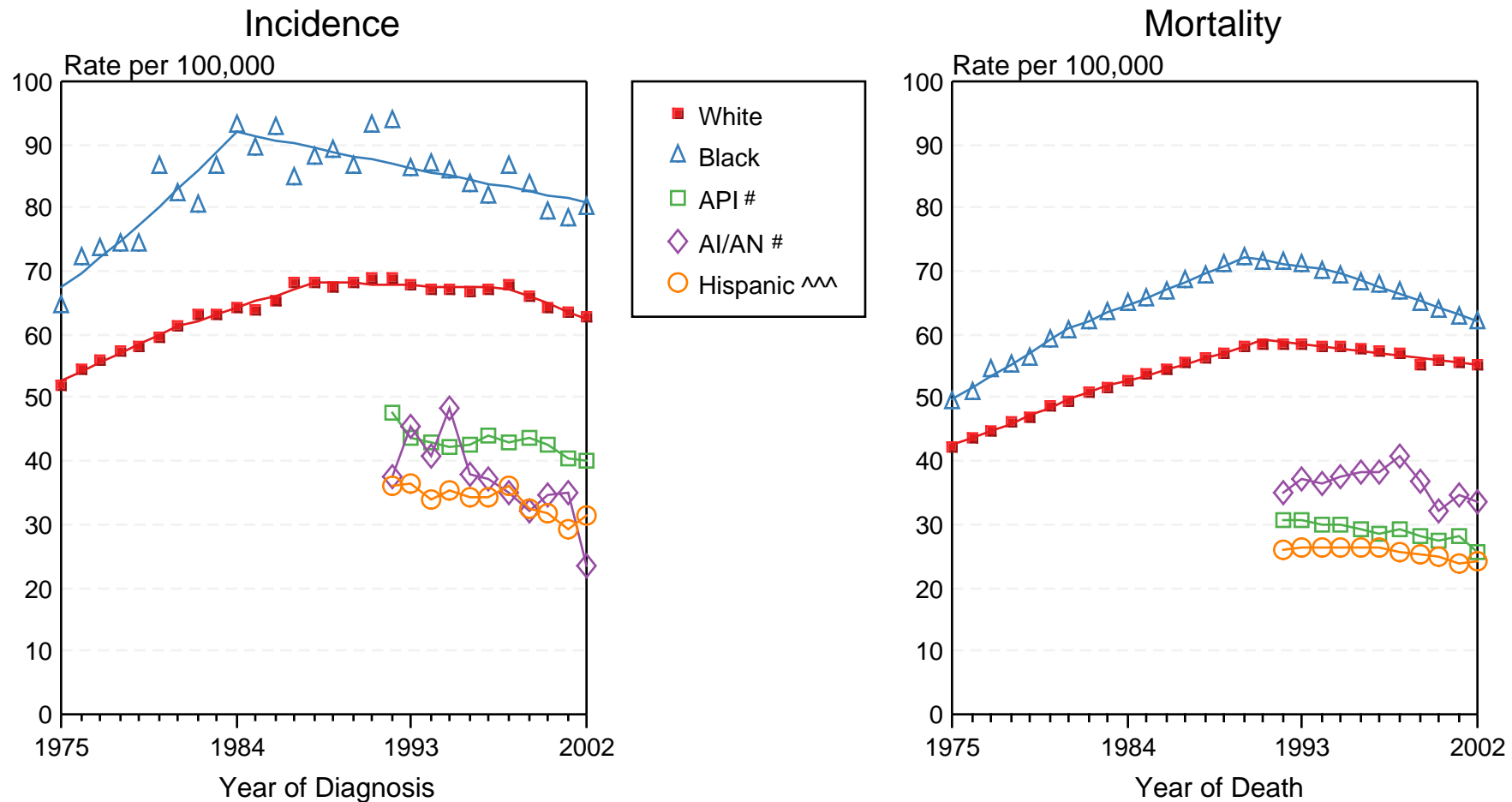


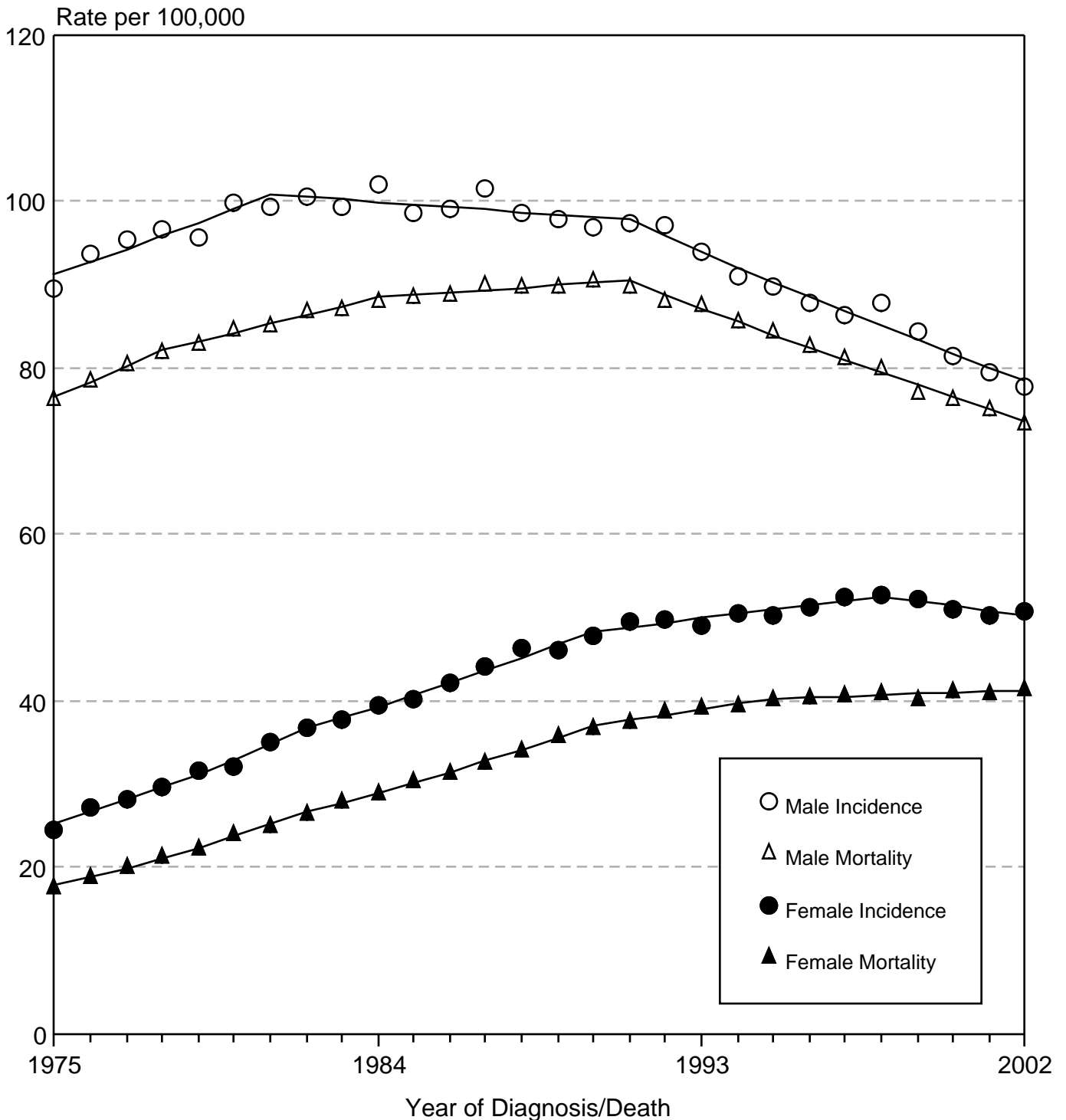
Figure XV-4

+ Source: Incidence data for whites and blacks is from the SEER 9 areas (San Francisco, Connecticut, Detroit, Hawaii, Iowa, New Mexico, Seattle, Utah, Atlanta). Incidence data for Asian/Pacific Islanders, American Indian/Alaska Natives and Hispanics is from the SEER 13 Areas (SEER 9 Areas, San Jose-Monterey, Los Angeles, Alaska Native Registry and Rural Georgia). Mortality data is from NCHS public use data file for the total US. Rates are age-adjusted to the 2000 US Std Population (19 age groups - Census P25-1103). Regression lines for whites and blacks are calculated using the Joinpoint Regression Program Version 3.0, April 2005, National Cancer Institute.

API = Asian/Pacific Islander. AI/AN = American Indian/Alaska Native.

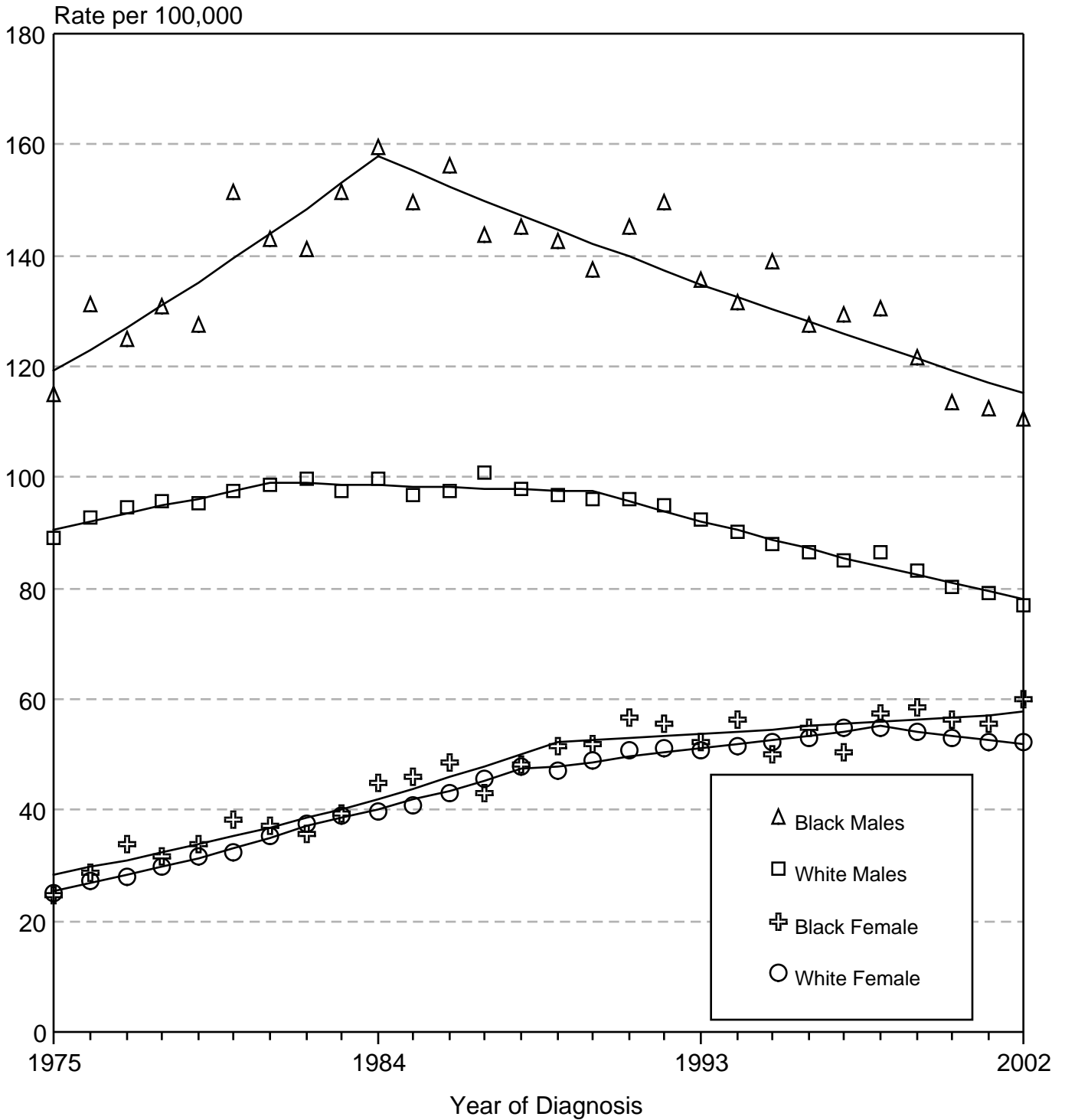
^^ Hispanic is not mutually exclusive from Whites, Blacks, Asian/Pacific Islanders, and American Indians/Alaska Natives. Incidence data for Hispanics excludes cases from Detroit, Hawaii, Alaska Native Registry and Rural Georgia. Mortality data for Hispanics excludes cases from Connecticut, Maine, Maryland, Minnesota, Oklahoma, New Hampshire, New York, North Dakota, and Vermont.

Cancer of the Lung & Bronchus SEER Incidence & US Death Rates, 1975-2002 By Sex, All Races



Source: SEER 9 areas and NCHS public use data file for the total US.
 Rates are age-adjusted to the 2000 US Std Population (19 age groups - Census P25-1103).
 Regression lines are calculated using the Joinpoint Regression Program Version 3.0, April 2005, National Cancer Institute.

Cancer of the Lung & Bronchus SEER Incidence, 1975-2002 By Sex and Race



Source: SEER 9 areas. Rates are age-adjusted to the 2000 US Std Population (19 age groups - Census P25-1103). Regression lines are calculated using the Joinpoint Regression Program Version 3.0, April 2005, National Cancer Institute.