

Summer Internship Program in Biomedical Research

*for Veterinary
Medical Students*



National Institutes of Health

U.S. Department of Health and Human Services

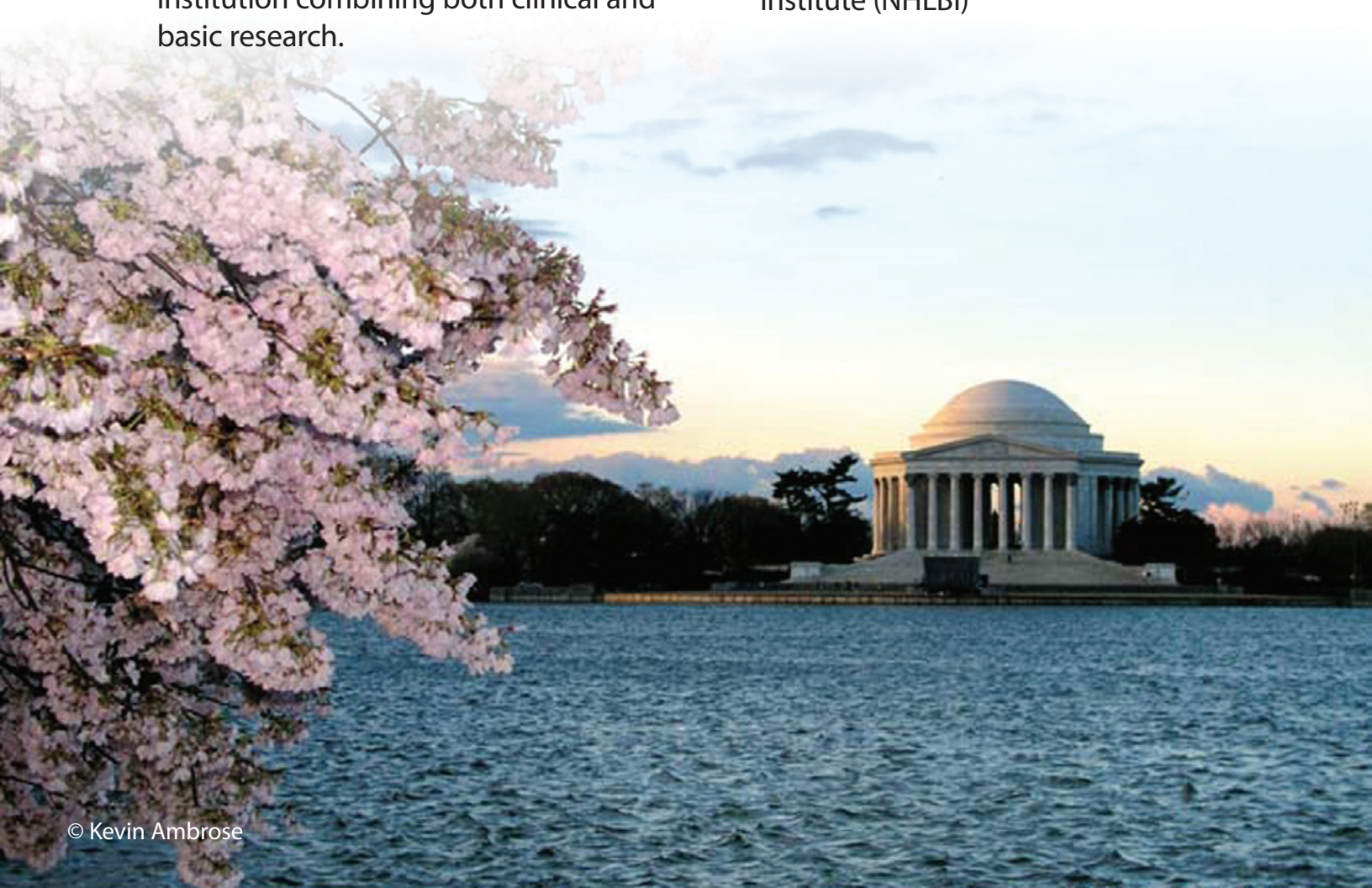
Summer and Externship Research Opportunities for Veterinary Medical Students at NIH

The National Institutes of Health, U.S. Department of Health and Human Services, is interested in providing veterinary medical students with the opportunity to participate in the NIH Summer Internship Program in Biomedical Research.

This unique opportunity made available through the National Cancer Institute Center for Cancer Research provides veterinary medical students with research experience while working at the government's key institution combining both clinical and basic research.

Students will participate in biomedical research in a laboratory of the:

- National Cancer Institute (NCI)
- National Institute of Allergy and Infectious Diseases (NIAID)
- National Institute of Diabetes and Digestive and Kidney Diseases (NIDDK)
- National Heart, Lung, and Blood Institute (NHLBI)



Research Internship for Veterinary Medical Students

Veterinary medical students will be able to:

- Receive hands-on experience in scientific research working with leading scientists at NCI, NIAID, NIDDK, and NHLBI
- Interact with veterinarians in the NCI Comparative Molecular Pathology Research Training Program
- Learn about comparative pathology and comparative oncology initiatives in human biomedical research
- Attend formal lectures and seminars targeted to students
- Discover the many professional roles performed by veterinarians working in a research environment
- Share experiences with veterinary students from other colleges across the nation

To Apply:

The on-line summer program application process opens in mid-November.

For full consideration, applications should be received by February 1.

- 1) Fill out the online application form at:

[www.training.nih.gov/
student/internship/
internship.asp](http://www.training.nih.gov/student/internship/internship.asp)

Note: Select graduate school for university level.

- 2) Send an e-mail with your intent to apply to:

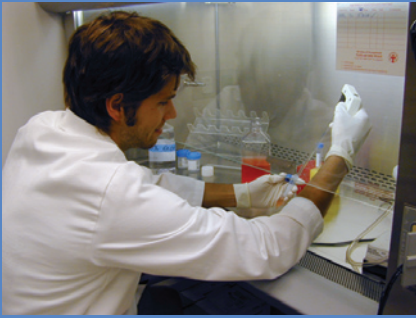
ncimolpathol@mail.nih.gov

Eligibility:

Veterinary students participating in the program must be in good academic standing in an accredited veterinary medical college professional doctoral degree program.

In addition to this program coordinated through the NCI, veterinary students are eligible for the campus-wide NIH Summer Internship Program, which is open to all students.





– Jim Perry, CSU 2008
NIAID Lab of Parasitic Diseases

Summer interns receive a Summer Program Stipend.

Summer internships generally begin in late May and end in August/September.



Externship Possibilities

Veterinary externship rotations in comparative pathology and/or research may be arranged at any time of the year, preferably for a minimum of six weeks.

Applications from individuals interested in elective externship rotations should apply directly by e-mail to:

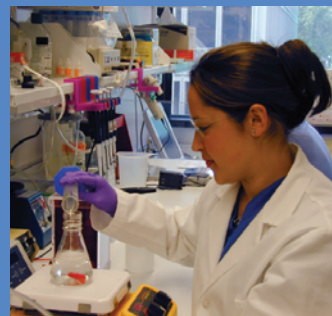
ncimolpathol@mail.nih.gov

"I wanted a hands-on research experience and that was exactly what I got. I worked independently, but got as much



support as I needed from the rest of the lab. What better way to expand my mind than to be in such a stimulating environment."

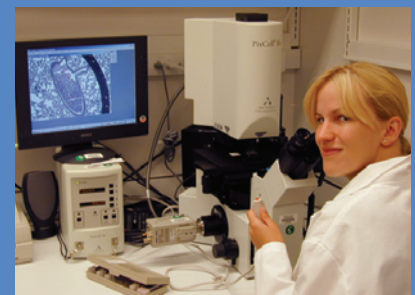
– Virginia Gillespie, U Wisc 2006,
NCI Molecular Pathology



"This experience has been extremely rewarding to me ...something I could not learn from a book or a classroom. After this experience I see how research affects you every day."

– Cassandra Pugh, UGA 2008,
NHLBI Lab of Cardiac Energetics

"It was an amazing experience for anyone interested in epidemiology, pathology, microbiology, ...even surgery."



– Anna-Michelle Young, U Penn 2007
NIDDK Lab of Cellular and
Developmental Biology

Contact Information

R. Mark Simpson, D.V.M., Ph.D.

Diplomate, ACVP

Head, Molecular Pathology Unit

Director, Comparative Pathology Training Partnerships

Center for Cancer Research
37 Convent Drive, Room 2000
Bethesda, MD 20892

ncimolpathol@mail.nih.gov

Jonathan S. Wiest, Ph.D.

Investigator, Laboratory of Cellular Carcinogenesis and Tumor Promotion

Associate Director for Training and Education

Office of the Director
Center for Cancer Research
31 Center Drive, Room 4A 48
Bethesda, MD 20892

wiestj@mail.nih.gov



Learn more about us on the web at :

ccr.nci.nih.gov/resources/training/summer_students/

