

# caTissue Core

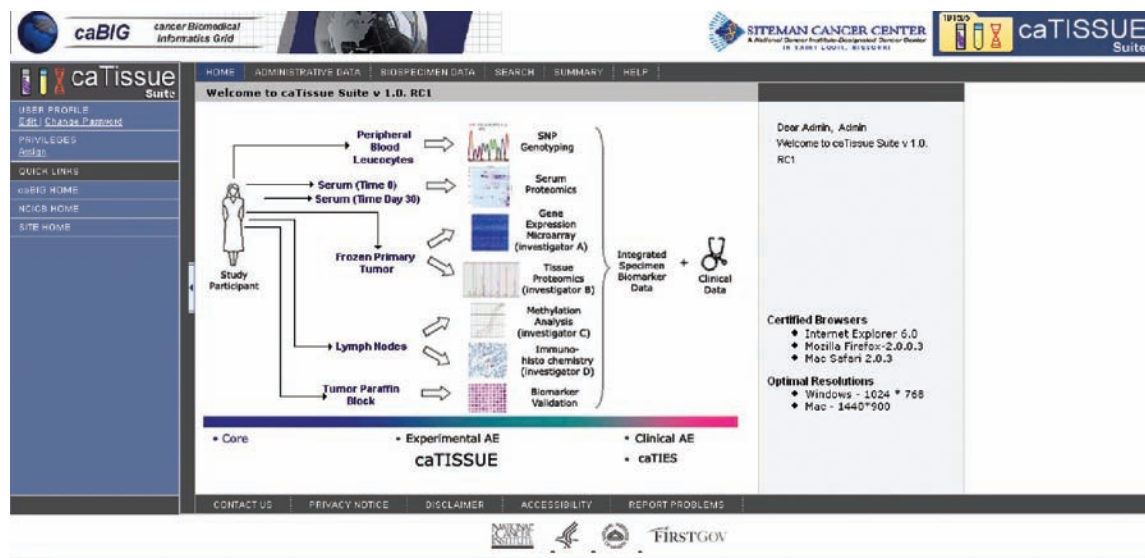
## Biobanking management system

caTissue Core is a tissue bank repository tool for biospecimen inventory, tracking, and basic annotation. caTissue permits users to track the collection, storage, quality assurance, and distribution of specimens as well as the derivation and aliquotting of new specimens from existing ones (e.g., DNA analysis).

caTissue Core also allows users to find and request specimens that may then be used in molecular, correlative studies. It provides browser-based and programmatic access to biospecimen data and manages tissue, fluid, cell, and molecular biospecimen information.

### Features:

- Web-based application for entering or searching for biospecimens
- Tracking of multiple specimens from the same participant
- Tracking of refined materials (RNA, DNA, Protein) that are used for molecular analysis
- Role-based permission scheme for repository personnel and researchers
- Tracking of quality assurance, distribution, derivation, and aliquotting of biospecimens
- Flexible storage container structure



caTissue Core interface

### Categories of Use:

- |  |  |                                      |   |
|--|--|--------------------------------------|---|
| <input checked="" type="checkbox"/> Biospecimens           | <input type="checkbox"/> Data Sharing      | <input type="checkbox"/> Imaging     | <input type="checkbox"/> Proteomics             |
| <input type="checkbox"/> Clinical Trials Management        | <input type="checkbox"/> Genome Annotation | <input type="checkbox"/> Microarrays | <input type="checkbox"/> Translational Research |
| <input type="checkbox"/> Data Analysis & Statistical Tools | <input type="checkbox"/> Infrastructure    | <input type="checkbox"/> Pathways    | <input type="checkbox"/> Vocabularies           |



## Architecture Overview

- **Application type:** Web application–remote application with data uploads/downloads through Web interface
- **System requirements:** Full installation requires installation of JBoss, version 4.0.4; MySQL 4.1; Oracle version 9i or 10g; ANT (Apache); JDK, version 1.5 or higher; mail server access

## Installation and Administration:

- **Skill sets needed:** Linux/Windows server administrator, MySQL/Oracle database administrator, Software engineer with experience in Java desirable
- **Infrastructure needed:** Windows/RedHat Enterprise Linux-based server (32- or 64-bit)
- **Long-term administration needs:** Ongoing system and database administration needs such as disk space and database tablespace (if Oracle) management as well as database backup

## Key Contributors:

- Alvin J. Siteman Cancer Center at Washington University School of Medicine in St. Louis
- Indiana University
- Thomas Jefferson University
- University of Pennsylvania
- University of Pittsburgh Medical Center

## Other Life Sciences Distribution Components:

- caArray
- Cancer Genome-Wide Association Studies (caGWAS)
- Clinical Trials Object Data System (CTODS)
- geWorkbench
- National Cancer Imaging Archive (NCIA)

## Resources

<b>Tool Overview Page</b>	<a href="https://cabig.nci.nih.gov/tools/catissuecore">https://cabig.nci.nih.gov/tools/catissuecore</a>
<b>Primary Workspace</b>	Tissue Banks and Pathology Tools (TBPT)
<b>TBPT Workspace Lead</b>	Juergen Klenk: <a href="mailto:klenk_juergen@bah.com">klenk_juergen@bah.com</a>
<b>TBPT LISTSERV</b>	<a href="https://list.nih.gov/archives/cabig_tbpt-l.html">https://list.nih.gov/archives/cabig_tbpt-l.html</a>
<b>caBIG™ Tool Inventory</b>	<a href="https://cabig.nci.nih.gov/inventory">https://cabig.nci.nih.gov/inventory</a>
<b>NCI Center for Bioinformatics Applications Support</b>	<a href="mailto:ncicb@pop.nci.nih.gov">ncicb@pop.nci.nih.gov</a>

