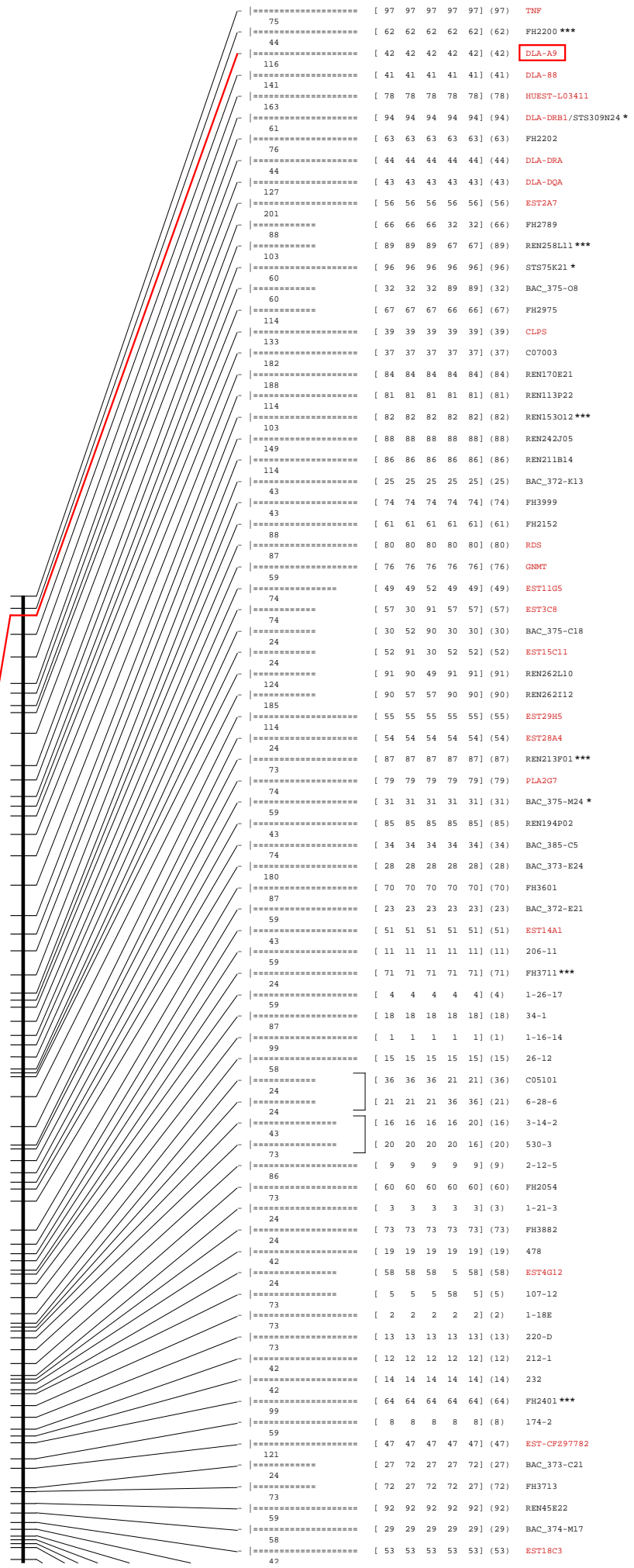
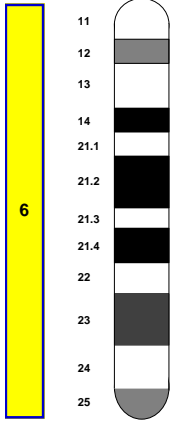


0 20 40 60 80 100 %



6p21.33	[31,6]
6p21.33	
6p21.33	
6p21.33	[32,0]
6p21.32	
6p21.32	
6p21.32	
6p21.31	[33,7]
6p21.31	
6p21.31	
6p21.31	[35,8]
6p21.1	[42,7]
6p21.1	[42,9]
6p21.1	[43,6]
6p21.1	[44,2]
6p21.1	[44,4]
6p21.1	[45,4]
6p21.1	[45,5]
6p12.3	[46,7]
6p12.2	[52,9]
6p12.1	[56,4]
6q13	[71,5]

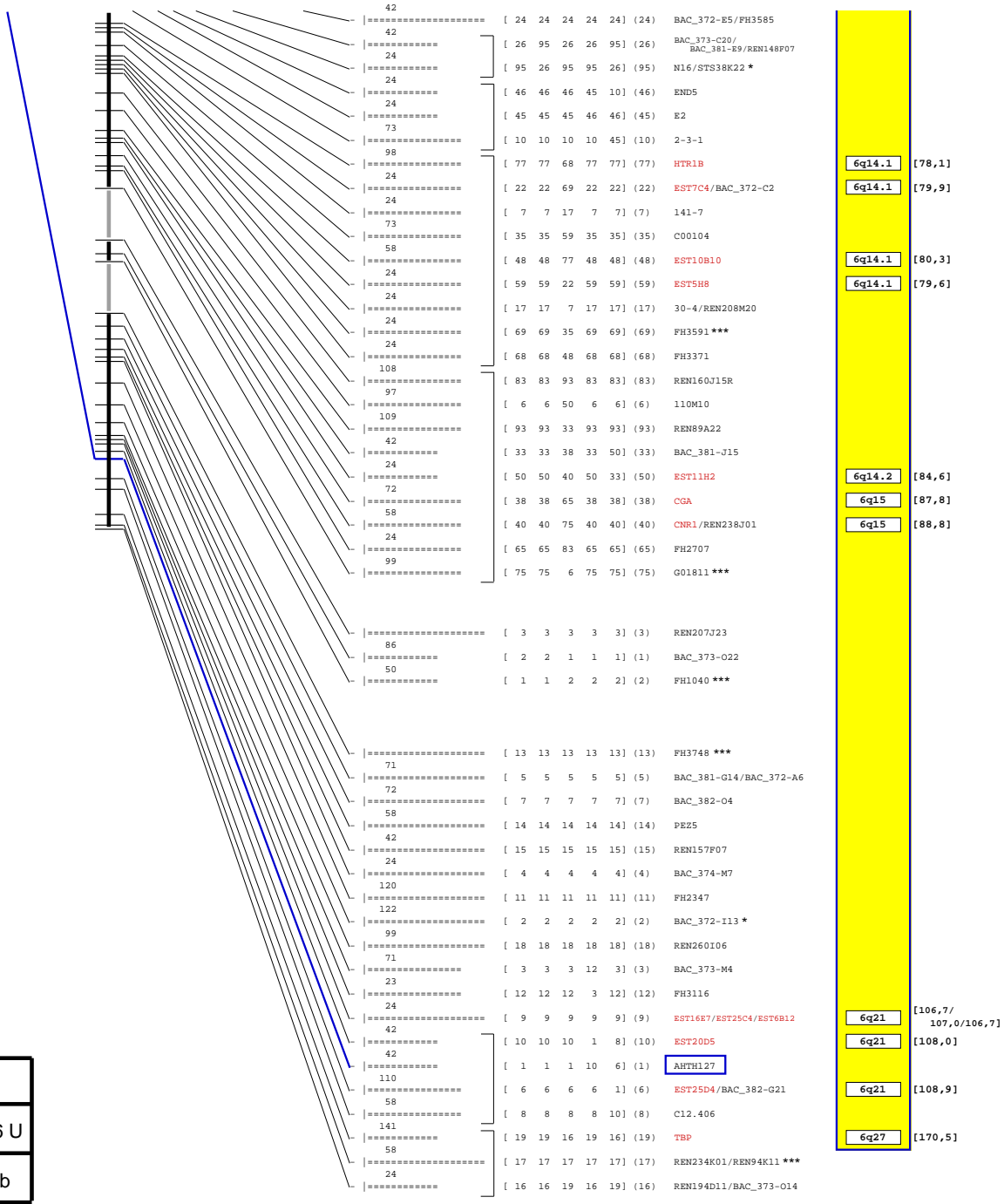
CFA 12



DLA-A9

H127

Size	Scale
85 Mb	1 Mb = 106 U
9002 U	1 U = 9 Kb



```

42 |===== [ 24 24 24 24 24] (24) BAC_372-E5/FH3585
42 |===== [ 26 95 26 26 95] (26) BAC_373-C20/
24 |===== [ 95 26 95 95 26] (95) BAC_381-E9/REN148F07
24 |===== [ 95 26 95 95 26] (95) N16/STS38K22 *
24 |===== [ 46 46 46 45 10] (46) ENDS5
24 |===== [ 45 45 45 46 46] (45) E2
73 |===== [ 10 10 10 10 45] (10) 2-3-1
98 |===== [ 77 77 68 77 77] (77) HTR1B
24 |===== [ 22 22 69 22 22] (22) EST7C4/BAC_372-C2
24 |===== [ 7 7 17 7 7] (7) 141-7
73 |===== [ 35 35 59 35 35] (35) C00104
58 |===== [ 48 48 77 48 48] (48) EST10B10
24 |===== [ 59 59 22 59 59] (59) EST5H8
24 |===== [ 17 17 7 17 17] (17) 30-4/REN208M20
99 |===== [ 69 69 35 69 69] (69) FH3591 ***
24 |===== [ 68 68 48 68 68] (68) FH3371
108 |===== [ 83 83 93 83 83] (83) REN160J15R
97 |===== [ 6 6 50 6 6] (6) 110M10
109 |===== [ 93 93 33 93 93] (93) REN89A22
42 |===== [ 33 33 38 33 50] (33) BAC_381-J15
24 |===== [ 50 50 40 50 33] (50) EST11H2
72 |===== [ 38 38 65 38 38] (38) CGA
58 |===== [ 40 40 75 40 40] (40) CNR1/REN238J01
24 |===== [ 65 65 83 65 65] (65) FH2707
99 |===== [ 75 75 6 75 75] (75) G01811 ***

===== [ 3 3 3 3 3] (3) REN207J23
86 |===== [ 2 2 1 1 1] (1) BAC_373-O22
50 |===== [ 1 1 2 2 2] (2) FH1040 ***

===== [ 13 13 13 13 13] (13) FH3748 ***
71 |===== [ 5 5 5 5 5] (5) BAC_381-G14/BAC_372-A6
72 |===== [ 7 7 7 7 7] (7) BAC_382-O4
58 |===== [ 14 14 14 14 14] (14) PEZ5
42 |===== [ 15 15 15 15 15] (15) REN157F07
24 |===== [ 4 4 4 4 4] (4) BAC_374-M7
120 |===== [ 11 11 11 11 11] (11) FH2347
122 |===== [ 2 2 2 2 2] (2) BAC_372-I13 *
99 |===== [ 18 18 18 18 18] (18) REN260I06
71 |===== [ 3 3 3 12 3] (3) BAC_373-M4
23 |===== [ 12 12 12 3 12] (12) FH3116
24 |===== [ 9 9 9 9 9] (9) EST1687/EST25C4/EST6B12
42 |===== [ 10 10 10 1 8] (10) EST20D5
42 |===== [ 1 1 1 10 6] (1) AHTH127
110 |===== [ 6 6 6 6 1] (6) EST25D4/BAC_382-G21
58 |===== [ 8 8 8 8 10] (8) C12.406
141 |===== [ 19 19 16 19 16] (19) TBP
58 |===== [ 17 17 17 17 17] (17) REN234K01/REN94K11 ***
24 |===== [ 16 16 19 16 19] (16) REN194D11/BAC_373-014

```

6q14.1	[78,1]
6q14.1	[79,9]
6q14.1	[80,3]
6q14.1	[79,6]
6q14.2	[84,6]
6q15	[87,8]
6q15	[88,8]
6q21	[106,7/ 107,0/106,7]
6q21	[108,0]
6q21	[108,9]
6q27	[170,5]