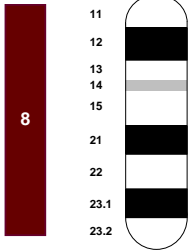


0 20 40 60 80 100 %



175	[47 47 47 47] (47)	REN252J07	
25	[9 9 9 9] (9)	BAC_385-D19	
44	[28 28 28 28] (28)	FH2952 ***	
138	[26 26 26 26] (26)	FH2609	
115	[19 19 19 19] (19)	EST19G4	
89	[45 45 45 45] (45)	REN239K24	
154	[55 55 55 55] (55)	STS38E18 *	
133	[24 24 24 24] (24)	FH2364	
203	[17 17 17 17] (17)	DINRA2	
171	[32 32 32 32] (32)	FH3443	
87	[34 34 34 34] (34)	FH3878	
58	[43 43 43 43] (43)	REN170M10	
98	[5 5 5 5] (5)	BAC_376-A15	
107	[37 37 37 37] (37)	ASPH	
138	[12 12 12 12] (12)	C05302	
58	[46 46 50 46] (46)	REN251L21	
58	[50 50 46 50] (50)	REN52D08 ***	
99	[48 48 48 48] (48)	REN263H24	
164	[2 2 2 2] (2)	AHTK40	
148	[23 23 41 23] (23)	FH2328	
111	[41 41 14 41] (41)	REN165M10	
131	[14 14 23 14] (14)	C29_188	
118	[54 54 8 54] (54)	STS246A16 *	
41	[8 8 11 8] (8)	BAC_382-G19	
108	[11 11 54 11] (11)	BAC_416-N2	
98	[35 35 16 35] (35)	FH4066	
121	[49 49 49 49] (49)	REN45F03 ***	
85	[16 16 35 16] (16)	CPH9	
71	[40 40 6 40] (40)	REN164F23	
71	[33 33 33 33] (33)	FH3582	
84	[6 6 40 6] (6)	BAC_376-C7	
41	[53 53 53 53] (53)	STS189F10 *	
23	[36 36 36 36] (36)	IMPAL *	
57	[3 3 3 3] (3)	BAC_372-E20	
83	[29 29 29 29] (29)	FH3003	
106	[57 52 57 29] (57)	TRAM	
41	[4 25 4 52] (52)	REN86C11	
84	[13 39 13 25] (25)	FH2385 ***	
85	[7 42 7 27] (39)	REN128M05	
24	[42 27 27 39] (27)	FH2772	
42	[39 7 42 42] (42)	REN169O18	
24	[27 13 39 7] (7)	BAC_382-E23	
57	[25 4 25 13] (13)	C29_002	
118	[52 57 52 4] (4)	BAC_373-C7	
72	[31 31 31 31] (31)	FH3366	
72	[20 20 20 20] (20)	EST5B10	
72	[10 10 10 10] (10)	BAC_385-E23	
57	[22 22 22 22] (22)	FH2177	
84	[30 30 30 30] (30)	FH3082	
126	[18 18 18 18] (18)	DTRCN21	
137	[21 21 21 21] (21)	FH1007 ***	
58	[1 1 1 1] (1)	AHTH235REN	
57	[51 51 51 51] (51)	REN74A15	
85	[44 44 44 44] (44)	REN187J21	
109	[15 15 15 15] (15)	CFOR16H04	
58	[56 56 56 56] (56)	STS45F09 *	
	[38 38 38 38] (38)	REN01C15	

CFA 29



Size	Scale
51 Mb	1 Mb = 99 U
5073 U	1 U = 10 Kb

8q11.23 [53,6]

8q12.3 [62,5]

8q21.13 [82,6]

8q13.3 [71,4]

8q21.3 [90,7]

8q21.3 [92,4]