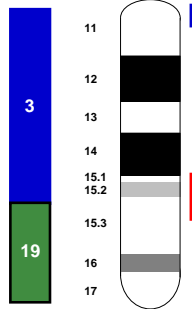


# CFA 20



0 20 40 60 80 100 %



63	[ 80 80 96 80 80 ] (80)	REN150K12	
84	[ 70 70 72 70 70 ] (70)	PE219 ***	
72	[ 95 95 95 95 95 ] (95)	SEC61A1	3q21.3 [127,9]
73	[ 72 72 70 72 72 ] (72)	RAB7	3q21.3 [129,9]
54	[ 1 1 80 1 1 ] (1)	AHRT216REN	
84	[ 96 96 1 96 96 ] (96)	SLC6A6	3p25.1 [14,4]
80	[ 69 69 69 69 69 ] (69)	RHO	3q21.3 [129,9]
91	[ 58 58 58 58 58 ] (58)	FH2887	
132	[ 88 88 88 88 88 ] (88)	REN55P21 ***	
30	[ 12 12 12 12 62 ] (12)	BAC_375-G24	
10	[ 62 62 62 62 12 ] (62)	FH3009	
41	[ 42 42 42 42 42 ] (42)	EST13G6	3p25.3 [9,4]
83	[ 75 75 75 75 75 ] (75)	REN119P03	
31	[ 22 22 22 22 22 ] (22)	BAC_382-M7	
50	[ 24 24 24 24 24 ] (24)	BAC_385-M9	
50	[ 59 59 59 59 59 ] (59)	FH2892	
71	[ 18 18 18 18 18 ] (18)	BAC_381-C4	
40	[ 26 26 26 26 26 ] (26)	C20.610	
20	[ 15 15 15 20 20 ] (15)	BAC_376-M21	
30	[ 20 20 20 15 15 ] (20)	BAC_381-F13	
73	[ 57 57 57 57 57 ] (57)	FH2863	
41	[ 19 19 19 19 19 ] (19)	BAC_381-D23	
50	[ 61 61 61 61 61 ] (61)	FH2951 ***	
41	[ 55 55 55 55 55 ] (55)	FH2625	
50	[ 10 10 10 10 10 ] (10)	BAC_375-E1	
10	[ 16 16 16 16 16 ] (16)	BAC_376-M9 *	
30	[ 25 25 25 25 25 ] (25)	C01801	
40	[ 89 89 89 89 89 ] (89)	REN60C14	
30	[ 23 23 23 23 77 ] (23)	BAC_385-L13/REN175I23	
70	[ 77 77 77 77 23 ] (77)	REN124F16	
50	[ 21 21 21 21 21 ] (21)	BAC_381-J1	
30	[ 49 49 49 94 49 ] (49)	EST4H11	3p13 [70,6]
30	[ 45 45 45 78 45 ] (45)	EST20E2	3p13 [71,2]
30	[ 94 94 94 45 94 ] (94)	REN96J16	
81	[ 78 78 78 49 78 ] (78)	REN130E03/REN76P23	
110	[ 82 82 82 82 82 ] (82)	REN159M20	
80	[ 73 73 73 73 73 ] (73)	REN100J13 ***	
30	[ 81 81 81 81 81 ] (81)	REN153G22	
50	[ 54 54 54 54 54 ] (54)	FH2365	
60	[ 6 6 6 6 6 ] (6)	BAC_372-A13/REN178E07	
70	[ 14 14 14 14 14 ] (14)	BAC_376-K5/FH3104	
10	[ 56 56 56 56 56 ] (56)	FH2719	
20	[ 63 63 63 63 63 ] (63)	FH3109	
10	[ 36 36 17 17 17 ] (17)	BAC_380-H2	
20	[ 17 17 36 36 36 ] (36)	CPH16	
30	[ 7 7 7 7 7 ] (7)	BAC_372-G21	
31	[ 52 52 52 52 52 ] (52)	FH2148	
31	[ 64 64 64 64 64 ] (64)	FH3358	
20	[ 85 85 85 85 85 ] (85)	REN250B12	
40	[ 43 43 43 43 43 ] (43)	EST17C8-B	3p14.3 [57,2]
10	[ 44 44 44 44 60 ] (44)	EST19A7	3p21.1 [56,0]
10	[ 60 60 60 60 44 ] (60)	FH2946	
20	[ 9 9 9 9 9 ] (9)	BAC_374-G17	
30	[ 79 79 79 79 79 ] (79)	REN149D23	
20	[ 87 87 87 87 87 ] (87)	REN316E23	
20	[ 92 92 92 92 92 ] (92)	REN89L24	
31	[ 93 93 90 93 93 ] (93)	REN93E07 ***	
30	[ 90 90 93 90 90 ] (90)	REN75I12	
41	[ 27 27 27 27 27 ] (27)	C20.622	
10	[ 11 11 8 11 11 ] (11)	BAC_375-E3	
20	[ 83 83 66 83 83 ] (83)	REN193A22	
10	[ 8 8 83 66 66 ] (8)	BAC_372-K3	
50	[ 66 66 11 8 8 ] (66)	GRM2	3p21.31 [51,0]
91	[ 71 71 71 71 71 ] (71)	PRKCD	3p21.31 [52,5]
70	[ 65 65 65 65 65 ] (65)	GNAT1	3p21.31 [49,9]
71	[ 5 5 5 5 5 ] (5)	APEH	3p21.31 [48,7]
40	[ 35 35 35 35 35 ] (35)	COL7A1	3p21.31 [47,9]
20	[ 47 47 47 37 37 ] (47)	EST2C7	3p21.31 [48,1]
10	[ 46 46 46 46 46 ] (46)	EST25A11/TCTA	3p21.31 [49,0]
50	[ 37 37 37 47 47 ] (37)	BAC_340-M15 (DAG1)	3p21.31 [48,8]
20	[ 13 13 13 13 13 ] (13)	BAC_376-I15	

Size	Scale
66 Mb	1 Mb = 64 U
4219 U	1 U = 16 Kb

