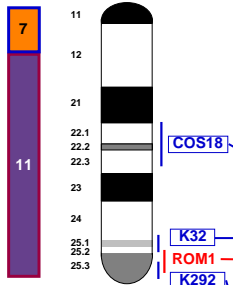
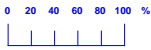
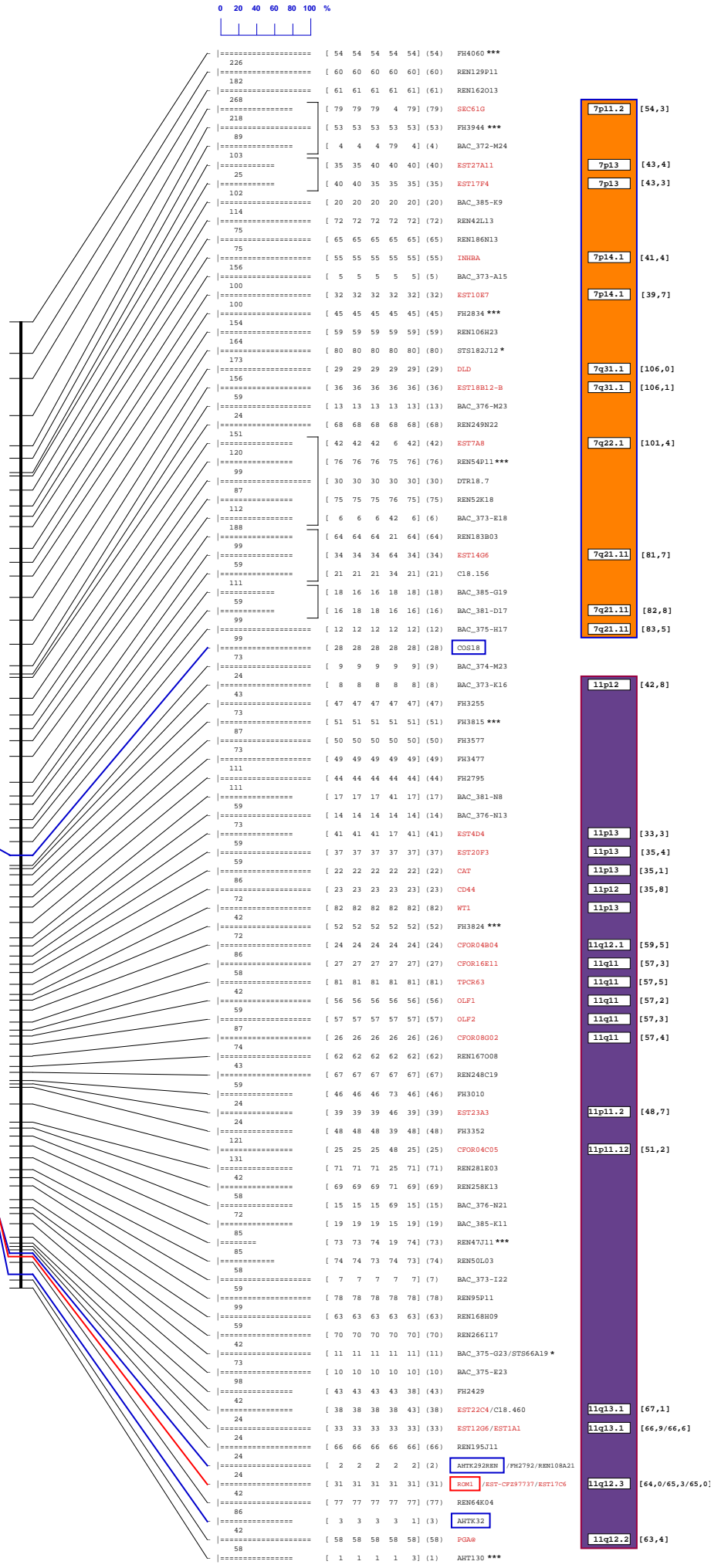


# CFA 18



Size	Scale
66 Mb	1 Mb = 106 U
6967 U	1 U = 9 Kb



- 7p11.2 [54,3]
- 7p13 [43,4]
- 7p13 [43,3]
- 7p14.1 [41,4]
- 7p14.1 [39,7]
- 7q31.1 [106,0]
- 7q31.1 [106,1]
- 7q22.1 [101,4]
- 7q21.11 [81,7]
- 7q21.1 [82,8]
- 7q21.11 [83,5]

- 11p12 [42,8]
- 11p13 [33,3]
- 11p13 [35,4]
- 11p13 [35,1]
- 11p12 [35,8]
- 11p13 [35,8]
- 11q12.1 [59,5]
- 11q11 [57,3]
- 11q11 [57,5]
- 11q11 [57,2]
- 11q11 [57,3]
- 11q11 [57,4]
- 11p11.2 [48,7]
- 11p11.2 [51,2]
- 11q13.1 [67,1]
- 11q13.1 [66,9/66,6]
- 11q12.3 [64,0/65,3/65,0]
- 11q12.2 [63,4]

PH4060 ***	[ 54 54 54 54 ] (54)
REN129P11	[ 60 60 60 60 ] (60)
REN162013	[ 61 61 61 61 ] (61)
SEC61G	[ 79 79 79 4 79 ] (79)
PH3944 ***	[ 53 53 53 53 ] (53)
BAC_372-M24	[ 4 4 4 79 4 ] (4)
EST27A11	[ 35 35 40 40 ] (40)
EST17F4	[ 40 40 35 35 ] (35)
BAC_385-K9	[ 20 20 20 20 ] (20)
REN42L13	[ 72 72 72 72 ] (72)
REN186N13	[ 65 65 65 65 ] (65)
INHBA	[ 55 55 55 55 ] (55)
BAC_373-A15	[ 5 5 5 5 ] (5)
EST10E7	[ 32 32 32 32 ] (32)
PH2834 ***	[ 45 45 45 45 ] (45)
REN106H23	[ 59 59 59 59 ] (59)
STS182J12 *	[ 80 80 80 80 ] (80)
D1D	[ 29 29 29 29 ] (29)
EST18B12-B	[ 36 36 36 36 ] (36)
BAC_376-M23	[ 13 13 13 13 ] (13)
REN249N22	[ 68 68 68 68 ] (68)
EST7A8	[ 42 42 42 6 42 ] (42)
REN54P11 ***	[ 76 76 76 76 ] (76)
DTR18.7	[ 30 30 30 30 ] (30)
REN52K18	[ 75 75 75 76 ] (75)
BAC_373-E18	[ 6 6 6 42 6 ] (6)
REN183B03	[ 64 64 64 21 64 ] (64)
EST1406	[ 34 34 34 64 34 ] (34)
C18.156	[ 21 21 21 34 21 ] (21)
BAC_385-G19	[ 18 18 18 18 ] (18)
BAC_381-D17	[ 16 18 18 16 ] (16)
BAC_375-H17	[ 12 12 12 12 ] (12)
COS18	[ 28 28 28 28 ] (28)
BAC_374-M23	[ 9 9 9 9 ] (9)
BAC_373-K16	[ 8 8 8 8 ] (8)
PH3255	[ 47 47 47 47 ] (47)
PH3815 ***	[ 51 51 51 51 ] (51)
PH3577	[ 50 50 50 50 ] (50)
PH3477	[ 49 49 49 49 ] (49)
PH2795	[ 44 44 44 44 ] (44)
BAC_381-N8	[ 17 17 17 17 ] (17)
BAC_376-N13	[ 14 14 14 14 ] (14)
EST4D4	[ 41 41 41 17 41 ] (41)
EST20F3	[ 37 37 37 37 ] (37)
CAT	[ 22 22 22 22 ] (22)
CD44	[ 23 23 23 23 ] (23)
WT1	[ 82 82 82 82 ] (82)
PH3824 ***	[ 52 52 52 52 ] (52)
CFOR04B04	[ 24 24 24 24 ] (24)
CFOR16E11	[ 27 27 27 27 ] (27)
TPCR63	[ 81 81 81 81 ] (81)
OLP1	[ 56 56 56 56 ] (56)
OLP2	[ 57 57 57 57 ] (57)
CFOR08G02	[ 26 26 26 26 ] (26)
REN167008	[ 62 62 62 62 ] (62)
REN248C19	[ 67 67 67 67 ] (67)
PH3010	[ 46 46 46 73 46 ] (46)
EST23A3	[ 39 39 39 46 39 ] (39)
PH3352	[ 48 48 48 39 48 ] (48)
CFOR04C05	[ 25 25 25 48 25 ] (25)
REN281R03	[ 71 71 71 25 71 ] (71)
REN258K13	[ 69 69 69 71 69 ] (69)
BAC_376-N21	[ 15 15 15 69 15 ] (15)
BAC_385-K11	[ 19 19 19 15 19 ] (19)
REN47J11 ***	[ 73 73 74 19 73 ] (73)
REN50L03	[ 74 74 73 74 73 ] (74)
BAC_373-I22	[ 7 7 7 7 ] (7)
REN95P11	[ 78 78 78 78 ] (78)
REN168H09	[ 63 63 63 63 ] (63)
REN266I17	[ 70 70 70 70 ] (70)
BAC_375-G23/STS66A19 *	[ 11 11 11 11 ] (11)
BAC_375-E23	[ 10 10 10 10 ] (10)
PH2429	[ 43 43 43 38 ] (43)
EST22C4/C18.460	[ 38 38 38 38 ] (38)
EST1206/EST1A1	[ 33 33 33 33 ] (33)
REN195J11	[ 66 66 66 66 ] (66)
AHTK292REN /PH2792/REN108A21	[ 2 2 2 2 ] (2)
ROM1 /EST-CF297737/EST17C6	[ 31 31 31 31 ] (31)
REN64K04	[ 77 77 77 77 ] (77)
AHTK32	[ 3 3 3 3 ] (3)
PGA*	[ 58 58 58 58 ] (58)
AHT130 ***	[ 1 1 1 1 ] (1)